



# Agricultural Prices

ISSN: 1937-4216

Released February 29, 2012, by the National Agricultural Statistics Service (NASS), Agricultural Statistics Board, United States Department of Agriculture (USDA).

## February Farm Prices Received Index Declined 8 Points

The preliminary All Farm Products Index of Prices Received by Farmers in February, at 180 percent, based on 1990-1992=100, decreased 8 points (4.3 percent) from January. The Crop Index is down 8 points (3.8 percent) but the Livestock Index increased 1 point (0.6 percent). Producers received lower prices for milk, strawberries, celery, and lettuce and higher prices for soybeans, corn, broilers, and hogs. In addition to prices, the overall index is also affected by the seasonal change based on a 3-year average mix of commodities producers sell. Increased monthly movement of cattle, milk, broilers, and hogs offset the decreased marketing of corn, soybeans, wheat, and cotton.

The preliminary All Farm Products Index is up 9 points (5.3 percent) from February 2011. The Food Commodities Index, at 167, decreased 5 points (2.9 percent) from last month but increased 4 points (2.5 percent) from February 2011.

## Prices Paid Index Up 1 Point

The February Index of Prices Paid for Commodities and Services, Interest, Taxes, and Farm Wage Rates (PPITW) is 209 percent of the 1990-1992 average. The index is up 1 point (0.5 percent) from January and 12 points (6.1 percent) above February 2011. Higher prices in February for feeder cattle, diesel, concentrates, and gasoline offset lower prices for supplements, LP gas, potash & phosphate, and other machinery.

## Prices Received, Prices Paid, and Ratio of Prices Received to Prices Paid Indexes 1990-1992 Base – United States: February 2012 with Comparisons

Index	February 2011	January 2012	February 2012
Prices received by farmers .....	171	188	180
Prices paid by farmers .....	197	208	209
Ratio of prices received to prices paid .....	87	90	86

## Contents

Prices Received by Farmers .....	4
Prices Received Indexes – United States: February 2012 with Comparisons .....	5
Prices Received and Prices Paid Indexes by Month for Selected Groups – United States: 2011 and 2012, 1990-1992 Base .....	5
Received Indexes by Month, Livestock Products, All Products, and All Crops – United States: 1990-1992=100 Chart.....	6
Received Indexes by Month, Food Grains, Feed Grains & Hay, and Oilseeds – United States: 1990-1992=100 Chart.....	6
Received Indexes by Month, Fruit & Nut and Commercial Vegetables – United States: 1990-1992=100 Chart.....	7
Received Indexes by Month, Meat Animal, Dairy Products, and Poultry & Eggs – United States: 1990-1992=100 Chart.....	7
Prices Received for Field Crops and Fruits – United States: February 2012 with Comparisons .....	8
Prices Received for Vegetables and Livestock – United States: February 2012 with Comparisons .....	9
Prices Received for Corn by Month – United States Chart.....	10
Prices Received for Wheat by Month – United States Chart .....	10
Prices Received for Upland Cotton by Month – United States Chart .....	11
Prices Received for Soybeans by Month – United States Chart .....	11
Prices Received for Cattle by Month – United States Chart .....	12
Prices Received for Milk by Month – United States Chart .....	12
Prices Received for Hogs by Month – United States Chart .....	13
Prices Received for Poultry by Month – United States Chart .....	13
Prices Received for All Wheat, Corn, and Soybeans by Month – United States: 2012 with Comparisons .....	14
Prices Received for Beef Cattle and All Hogs by Month – United States: 2012 with Comparisons .....	14
Prices Received for All Wheat – States and United States: February 2012 with Comparisons .....	15
Prices Received for Winter Wheat – States and United States: February 2012 with Comparisons .....	15
Prices Received for Durum Wheat – States and United States: February 2012 with Comparisons.....	16
Prices Received for Spring Wheat – States and United States: February 2012 with Comparisons .....	16
Prices Received for All Barley – States and United States: February 2012 with Comparisons.....	17
Prices Received for Malting Barley – States: February 2012 with Comparisons .....	17
Prices Received for Feed Barley – States: February 2012 with Comparisons .....	17
Prices Received for Corn – States and United States: February 2012 with Comparisons .....	18
Prices Received for Soybeans – States and United States: February 2012 with Comparisons .....	18
Prices Received for Oats – States and United States: February 2012 with Comparisons .....	19
Prices Received for Sorghum Grain – States and United States: February 2012 with Comparisons.....	19
Prices Received for Dry Beans – States and United States: February 2012 with Comparisons .....	20
Prices Received for Peanuts (In-Shell) – States and United States: February 2012 with Comparisons .....	20
Prices Received for Sunflower – States and United States: February 2012 with Comparisons.....	21
Prices Received for Canola – States and United States: February 2012 with Comparisons .....	21
Prices Received for Flaxseed – States and United States: February 2012 with Comparisons .....	21
Prices Received for Upland Cotton and Cottonseed – States and United States: February 2012 with Comparisons .....	22
Prices Received and Farm Marketings for Upland Cotton and Rice – United States: February 2012 with Comparisons .....	22
Prices Received for Hay by Type – States and United States: February 2012 with Comparisons.....	23
Prices Received for Apples – States and United States: February 2012 with Comparisons .....	23
Prices Received for Citrus Fruits by Utilization – States and United States: February 2011 .....	24
Prices Received for Citrus Fruits by Utilization – States and United States: January 2012 .....	25
Prices Received for Citrus Fruits by Utilization – States and United States: February 2012 .....	26
Prices Received for Potatoes – States and United States: February 2012 with Comparisons.....	27
Prices Received for All Milk – States and United States: February 2012 with Comparisons.....	28
Prices Received for Milk Cows – States and United States: January 2012 with Comparisons.....	29
Commodity Parity Prices and Price as Percent of Parity Price – United States: February 2012 with Comparisons .....	30

Commodity Parity Prices – United States: February 2012 with Comparisons .....	31
Marketing Year for Specified Commodities .....	33
Cattle Market Year Average Prices Received – United States: Marketing Years 2010 and 2011.....	33
Hog Market Year Average Prices Received – United States: Marketing Years 2010 and 2011 .....	33
Lamb and Sheep Market Year Average Prices Received – United States: Marketing Years 2010 and 2011 .....	33
Milk Cow Market Year Average Prices Received – States and United States: Marketing Years 2010 and 2011 .....	34
Prices Received for Cows, Steers and Heifers, Calves, Beef Cattle, and Milk Cows by Month – United States: Marketing Years 2010 and 2011.....	35
Prices Received for Borrows and Gilts, Sows, and All Hogs by Month – United States: Marketing Years 2010 and 2011 .....	35
Prices Received for Sheep, and Lambs by Month – United States: Marketing Years 2010 and 2011 .....	35
Prices Received for Milk Cows by Month – States: 2011 and United States: 2010 and 2011 .....	36
Prices Received Value per Head for All Cattle and Calves – States and United States: January 1, 2011 and 2012 .....	37
Prices Received Value per Head and Total Value for Hogs – States and United States: December 1, 2010 and 2011 .....	38
Prices Received Value per Head and Total Value for Sheep and Lambs – States and United States: January 1, 2011 and 2012.....	39
Prices Received Value per Head and Total Value for Angora Goats – States and United States: January 1, 2011 and 2012.....	40
Other Hay Baled Market Year Average Prices Received – Selected Regions: 2007-2009, 2008-2010, and 2009-2011 Averages.....	40
Reliability of Prices Received Estimates .....	41
Prices Paid by Farmers.....	42
Prices Paid Indexes and Related Parity Ratios – United States: February 2012 with Comparisons.....	43
Prices Paid Indexes and Annual Weights for Input Components and Sub-Components – United States: February 2012 with Comparisons.....	44
Paid Indexes by Month, All Items and Production Items – United States: 1990-1992=100 Chart .....	45
Paid Indexes, Annual Averages, Production Items, Interest, Taxes, and Wages – United States: 1990-1992=100 Chart .....	45
Paid Indexes by Farm Type, All Items – United States: 1990-1991=100 Chart.....	46
Paid Indexes by Origin, All Production Items – United States: 1990-1992=100 Chart .....	46
Paid Indexes by Non-Farm Sector, Supplies & Repairs, Fertilizer, Machinery, and Fuel – United States: 1990-1992=100 Chart .....	47
Paid Indexes by Month, Feed and Replacement Livestock – United States: 1990-1992=100 Chart.....	47
Feed Price Ratios – United States: February 2012 with Comparisons .....	48
Prices Received Used to Calculate Feed Price Ratios – United States: February 2012 with Comparisons.....	48
Prices Paid for Feeder Livestock – United States: February 2012 with Comparisons.....	48
Reliability of Prices Paid Estimates .....	49
Information Contacts .....	50

## Prices Received by Farmers

The February All Farm Products Index is 180 percent of its 1990-1992 base, down 4.3 percent from the January index but 5.3 percent above the February 2011 index.

**All crops:** The February index, at 204, decreased 3.8 percent from January but is 2.0 percent above February 2011. Index decreases for commercial vegetables, food grains, and potatoes & dry beans more than offset the index increases for oilseeds, feed grains & hay, upland cotton, and fruits & nuts.

**Food grains:** The February index, at 226, is 1.3 percent below the previous month and 2.6 percent below a year ago. The February all wheat price, at \$7.09 per bushel, is up 5 cents from January but 33 cents below February 2011.

**Feed grains & hay:** The February index, at 263, is up 0.8 percent from last month and 13 percent above a year ago. The corn price, at \$6.16 per bushel, is up 9 cents from last month and 51 cents above February 2011. The all hay price, at \$176 per ton, increased \$4.00 from January and is \$60.00 higher than last February. Sorghum grain, at \$10.90 per cwt, is 10 cents above January but unchanged from February last year.

**Cotton, Upland:** The February index, at 152, is up 2.0 percent from January but down 0.7 percent from last year. The February price, at 92.3 cents per pound, is up 2.0 cents from the previous month but 0.6 cent below last February.

**Oilseeds:** The February index, at 222, is up 3.7 percent from January but 2.6 percent lower than February 2011. The soybean price, at \$12.30 per bushel, increased 40 cents from January but is down 40 cents from February 2011.

**Fruits & nuts:** The February index, at 154, is up 1.3 percent from January and 8.5 percent higher than a year ago. Price increases for oranges and grapefruit more than offset price decreases for strawberries and lemons.

**Commercial vegetables:** The February index, at 111, is down 6.7 percent from last month and 59 percent below February 2011. Price declines for celery, lettuce, and broccoli more than offset the price increase during February for snap beans.

**Potatoes & dry beans:** The February index, at 172, is down 0.6 percent from last month but 8.9 percent above February 2011. The all potato price, at \$9.22 per cwt, is 1 cent less than January and down 4 cents from last February. The all dry bean price, at \$46.20 per cwt, is up \$4.00 from the previous month and \$17.60 above February 2011.

**Livestock and products:** The February index, at 157, is 0.6 percent above last month and up 9.0 percent from February 2011. Compared with a year ago, prices are higher for cattle, broilers, calves, hogs, and turkeys. Prices for milk and eggs are down from last year.

**Meat animals:** The February index, at 165, is up 1.2 percent from last month and 15 percent higher than last year. The February hog price, at \$65.50 per cwt, is up \$2.00 from January and \$4.10 higher than a year ago. The February beef cattle price of \$126 per cwt increased \$1.00 from last month and is \$18.00 higher than February 2011.

**Dairy products:** The February index, at 137, is down 5.5 percent from a month ago and 6.2 percent lower than February last year. The February all milk price of \$17.90 per cwt declined \$1.10 from last month and \$1.20 from February 2011.

**Poultry & eggs:** The February index, at 159, is up 3.9 percent from January and 12 percent above a year ago. The February market egg price, at 66.9 cents per dozen, increased 0.2 cent from January but is down 10.7 cents from February 2011. The February broiler price, at 52.0 cents per pound, is up 3.0 cents from January and 8.0 cents above a year ago. The February turkey price, at 63.9 cents per pound, is down 1.8 cents from the previous month but up 6.1 cents from a year earlier.

## Prices Received Indexes – United States: February 2012 with Comparisons

[Revised historical price indexes for months not shown are available at [www.nass.usda.gov](http://www.nass.usda.gov)]

Index	1910-1914 Base				1990-1992 Base		
	1990-1992 Average	February 2011	January 2012	February 2012	February 2011	January 2012	February 2012
	(percent)	(percent)	(percent)	(percent)	(percent)	(percent)	(percent)
All products .....	639	1083	1195	1141	171	188	180
All crops .....	500	992	1049	1011	200	212	204
Food grains .....	325	735	726	716	232	229	226
Feed grains & hay .....	363	828	932	939	232	261	263
Cotton, Upland .....	517	786	764	781	153	149	152
Tobacco .....	1263	1491	1566	1566	99	104	104
Oilseeds .....	554	1248	1173	1215	228	214	222
Fruits & nuts .....	716	988	1064	1073	142	152	154
Commercial vegetables .....	698	1946	849	795	272	119	111
Potatoes & dry beans .....	540	799	875	872	158	173	172
Other crops .....	493	643	645	645	131	131	131
Livestock and products .....	768	1103	1199	1202	144	156	157
Meat animals .....	1021	1461	1655	1682	143	163	165
Dairy products .....	799	1175	1169	1101	146	145	137
Poultry & eggs .....	282	400	430	446	142	153	159
Food commodities .....	(NA)	(NA)	(NA)	(NA)	163	172	167

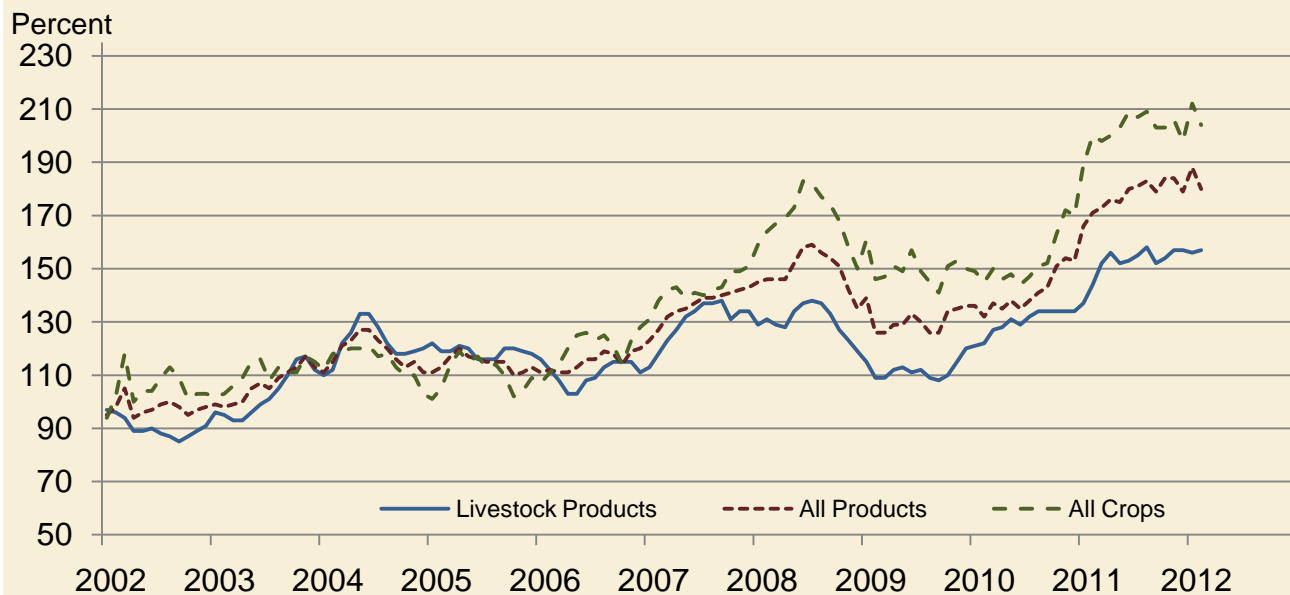
(NA) Not available.

## Prices Received and Prices Paid Indexes by Month for Selected Groups – United States: 2011 and 2012, 1990-1992 Base

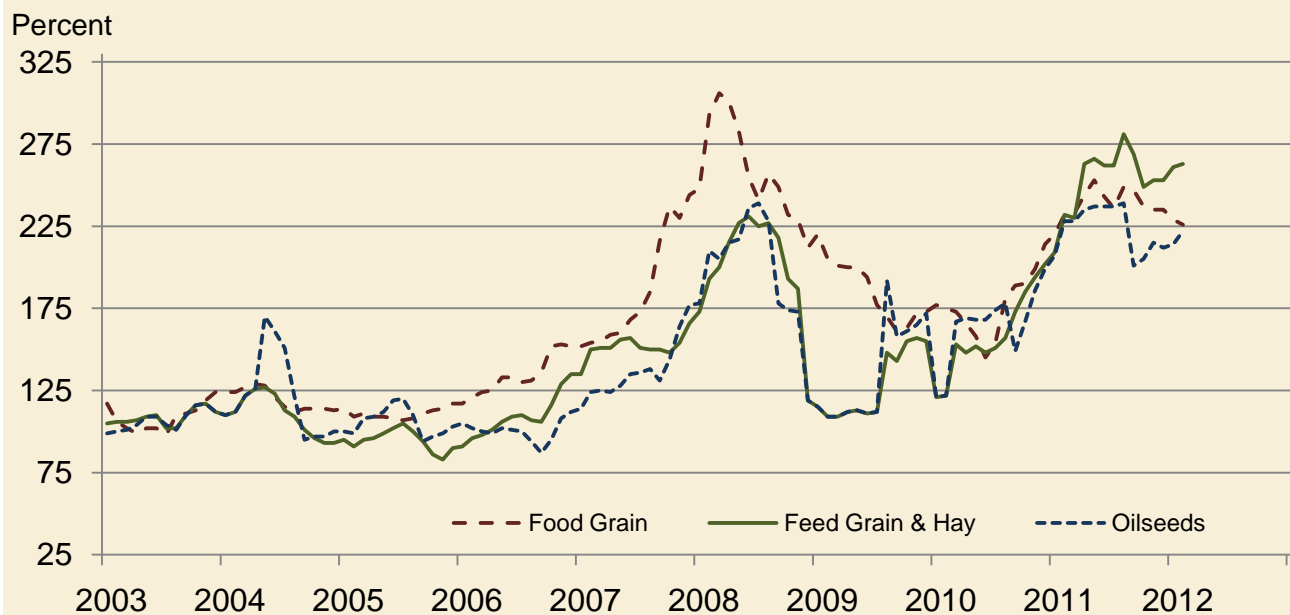
[Revised historical price indexes for months not shown are available at [www.nass.usda.gov](http://www.nass.usda.gov). Blank data cells indicate estimation period has not yet begun]

Month	Index of prices received						Index of prices paid			
	All farm products		All crops		Livestock and products		All items		Production items	
	2011	2012	2011	2012	2011	2012	2011	2012	2011	2012
	(percent)	(percent)	(percent)	(percent)	(percent)	(percent)	(percent)	(percent)	(percent)	(percent)
January .....	166	188	189	212	137	156	195	208	204	221
February .....	171	180	200	204	144	157	197	209	207	222
March .....	173		198		152		201		211	
April .....	176		200		156		203		215	
May .....	175		203		152		203		215	
June .....	180		209		153		203		215	
July .....	181		207		155		204		216	
August .....	183		209		158		204		216	
September .....	179		203		152		204		217	
October .....	184		203		154		204		216	
November .....	184		206		157		205		218	
December .....	179		198		157		205		217	

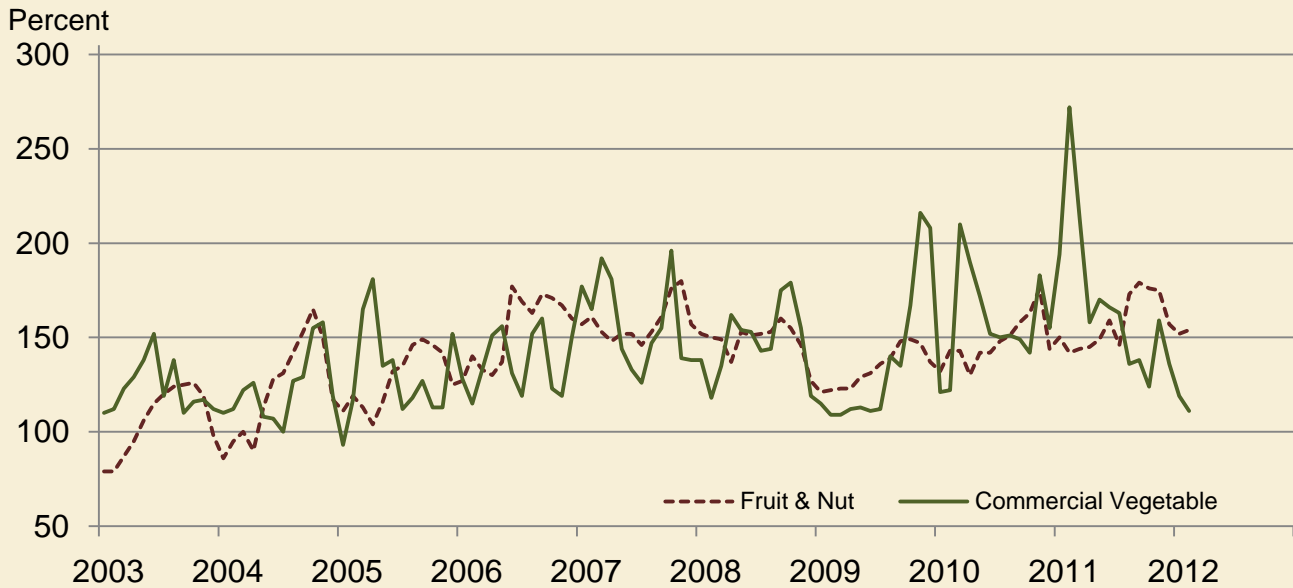
### Received Indexes by Month, Livestock Products, All Products, and All Crops – United States: 1990-1992=100



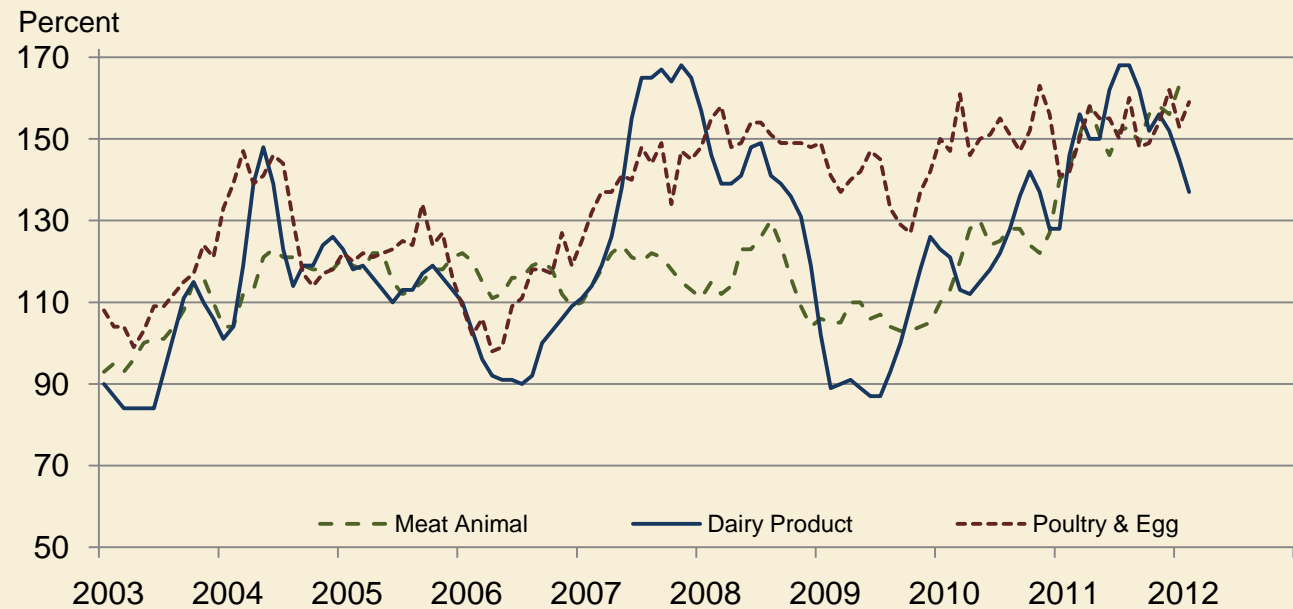
### Received Indexes by Month, Food Grains, Feed Grains & Hay, and Oilseeds – United States: 1990-1992=100



### Received Indexes by Month, Fruit & Nut and Commercial Vegetables – United States: 1990-1992=100



### Received Indexes by Month, Meat Animal, Dairy Product, and Poultry & Egg – United States: 1990-1992=100



**Prices Received for Field Crops and Fruits – United States: February 2012 with Comparisons**

Commodity	Average 1990-1992=100	February 2011	January 2012	Preliminary February 2012
<b>Field crops</b>				
Austrian winter peas ..... dollars/cwt	(NA)	20.00	20.00	(S)
Barley, all ..... dollars/bushel	2.12	3.95	5.40	5.05
Feed ..... dollars/bushel	1.90	3.56	4.84	4.28
Malting ..... dollars/bushel	2.43	4.06	5.49	5.18
Beans, dry edible ..... dollars/cwt	19.10	28.60	42.20	46.20
Canola ..... dollars/cwt	(NA)	20.40	23.30	24.50
Chickpeas, all ..... dollars/cwt	(NA)	30.30	34.30	(D)
Large ..... dollars/cwt	(NA)	31.40	35.30	(D)
Small ..... dollars/cwt	(NA)	19.60	28.20	(S)
Corn ..... dollars/bushel	2.30	5.65	6.07	6.16
Cotton, Upland ..... dollars/pound	0.606	0.929	0.903	0.923
Cottonseed <sup>1</sup> ..... dollars/ton	96.00	172.00	281.00	275.00
Flaxseed ..... dollars/bushel	4.27	15.30	13.60	13.20
Hay, all, baled ..... dollars/ton	76.30	116.00	172.00	176.00
Alfalfa ..... dollars/ton	77.20	129.00	192.00	198.00
Other ..... dollars/ton	60.00	95.80	127.00	130.00
Lentils ..... dollars/cwt	(NA)	29.20	27.30	26.60
Oats ..... dollars/bushel	1.22	3.27	3.56	3.66
Peanuts, in-shell ..... dollars/pound	0.304	0.235	0.336	0.321
Peas, dry edible ..... dollars/cwt	(NA)	12.10	15.70	15.30
Potatoes ..... dollars/cwt	5.82	9.26	9.23	9.22
Rice, all ..... dollars/cwt	7.07	13.40	14.20	13.90
Long ..... dollars/cwt	(NA)	12.00	13.60	13.40
Medium and short ..... dollars/cwt	(NA)	18.80	15.20	15.30
Sorghum grain ..... dollars/cwt	3.75	10.90	10.80	10.90
Soybeans ..... dollars/bushel	5.61	12.70	11.90	12.30
Sunflowers, all ..... dollars/cwt	9.50	27.40	28.70	27.80
Wheat, all ..... dollars/bushel	2.96	7.42	7.04	7.09
Winter ..... dollars/bushel	2.93	7.03	6.57	6.49
Durum ..... dollars/bushel	2.86	8.45	8.80	8.88
Other spring ..... dollars/bushel	3.11	7.68	8.12	7.97
Hard red winter <sup>2</sup> ..... dollars/bushel	(NA)	7.07	6.72	(NA)
Soft red winter <sup>2</sup> ..... dollars/bushel	(NA)	7.11	6.87	(NA)
Hard red spring <sup>2</sup> ..... dollars/bushel	(NA)	7.70	8.36	(NA)
White <sup>2</sup> ..... dollars/bushel	3.24	6.78	6.15	(NA)
<b>Fruits</b>				
Citrus, equivalent on-tree				
Grapefruit ..... dollars/box	5.77	6.31	5.78	5.96
Lemons ..... dollars/box	10.10	3.91	14.37	11.54
Oranges ..... dollars/box	5.79	6.50	7.09	7.64
Tangelos ..... dollars/box	5.82	5.75	14.65	14.33
Tangerines and mandarins ..... dollars/box	15.11	14.68	15.73	18.50
Noncitrus, fresh				
Apples <sup>3</sup> ..... dollars/pound	0.212	0.280	0.354	0.354
Grapes <sup>3</sup> ..... dollars/ton	506.00	(S)	680.00	(S)
Peaches <sup>3</sup> ..... dollars/ton	432.00	(S)	(S)	(S)
Pears <sup>3</sup> ..... dollars/ton	370.00	636.00	510.00	472.00
Strawberries ..... dollars/cwt	56.00	126.00	138.00	109.00

(D) Withheld to avoid disclosing data for individual operations.

(NA) Not available.

(S) Insufficient number of reports to establish an estimate.

<sup>1</sup> Marketing year August - February.

<sup>2</sup> Preliminary estimates not set for this item.

<sup>3</sup> Equivalent packinghouse-door returns for California, Michigan, New York (apples only), and Washington (apples, peaches, and pears). Prices as sold for other states.



# Prices Received for Vegetables and Livestock – United States: February 2012 with Comparisons

[Price data source for livestock and poultry commodities is United States Department of Agriculture's Agricultural Marketing Service]

Commodity	Average 1990-1992=100	February 2011	January 2012	Preliminary February 2012
<b>Vegetables, fresh <sup>1</sup></b>				
Asparagus .....dollars/cwt	79.80	(S)	(S)	(S)
Beans, snap <sup>2</sup> .....dollars/cwt	(NA)	48.50	77.70	82.20
Broccoli .....dollars/cwt	22.50	45.40	27.30	22.60
Cantaloupes <sup>2</sup> .....dollars/cwt	(NA)	(S)	(S)	(S)
Carrots .....dollars/cwt	13.20	40.70	26.30	26.30
Cauliflower .....dollars/cwt	26.80	55.90	31.50	30.10
Celery .....dollars/cwt	11.60	46.50	20.10	13.80
Corn, sweet .....dollars/cwt	15.70	51.80	37.30	27.20
Cucumbers <sup>2</sup> .....dollars/cwt	(NA)	(S)	(S)	(S)
Lettuce .....dollars/cwt	11.90	54.40	13.40	12.40
Onions <sup>3</sup> .....dollars/cwt	12.80	9.97	7.52	5.91
Tomatoes .....dollars/cwt	32.30	108.00	28.90	27.20
<b>Livestock</b>				
Calves .....dollars/cwt	94.30	139.00	169.00	180.00
Cattle, all beef .....dollars/cwt	72.90	108.00	125.00	126.00
Cows <sup>4</sup> .....dollars/cwt	49.60	72.50	74.60	80.10
Steers and heifers .....dollars/cwt	77.10	111.00	130.00	130.00
Milk cows <sup>5</sup> .....dollars/head	1130.00	(NA)	1460.00	(NA)
Hogs, all .....dollars/cwt	47.70	61.40	63.50	65.50
Barrows and gilts .....dollars/cwt	48.40	61.70	63.70	65.80
Sows .....dollars/cwt	39.50	53.30	56.60	58.10
<b>Dairy and poultry</b>				
Milk, all <sup>6</sup> .....dollars/cwt	13.06	19.10	19.00	17.90
Fat test ..... percent	3.66	3.79	3.81	3.76
Broilers, live <sup>7</sup> .....dollars/pound	0.317	0.440	0.490	0.520
Eggs, all <sup>8</sup> .....dollars/dozen	0.643	0.954	0.879	0.885
Market <sup>8 9</sup> .....dollars/dozen	0.546	0.776	0.667	0.669
Turkeys, live <sup>8 10 11</sup> .....dollars/pound	0.380	0.578	0.657	0.639
<b>Adjusted for seasonal variation</b>				
Eggs, all .....dollars/dozen	0.545	0.900	0.794	0.835
Seasonal factor ..... percent	100	106	111	106
Milk, all <sup>6</sup> .....dollars/cwt	9.71	19.30	18.70	18.00
Seasonal factor ..... percent	100	99	102	99

(NA) Not available.

(S) Insufficient number of reports to establish an estimate.

<sup>1</sup> Beginning January 2006, point of first sale. FOB shipping point for prior years.

<sup>2</sup> Monthly estimates began January 1995.

<sup>3</sup> Includes some processing.

<sup>4</sup> Beef cows and cull dairy cows sold for slaughter.

<sup>5</sup> Animals sold for dairy herd replacement only. Prices available for January, April, July, and October.

<sup>6</sup> Before deductions for hauling. Includes quality, quantity, and other premiums. Excludes hauling subsidies.

<sup>7</sup> Live weight equivalent price.

<sup>8</sup> Mid-month price.

<sup>9</sup> Also referred to as table eggs.

<sup>10</sup> Live weight equivalent price is used when actual live weight price is not available.

<sup>11</sup> Beginning January 2011, price reflects FOB shipping point basis. Prior year price reflects delivered basis.

## Prices Received for Corn by Month – United States

Dollars per bushel



## Prices Received for Wheat by Month – United States

Dollars per bushel



## Prices Received for Upland Cotton by Month – United States

Dollars per pound



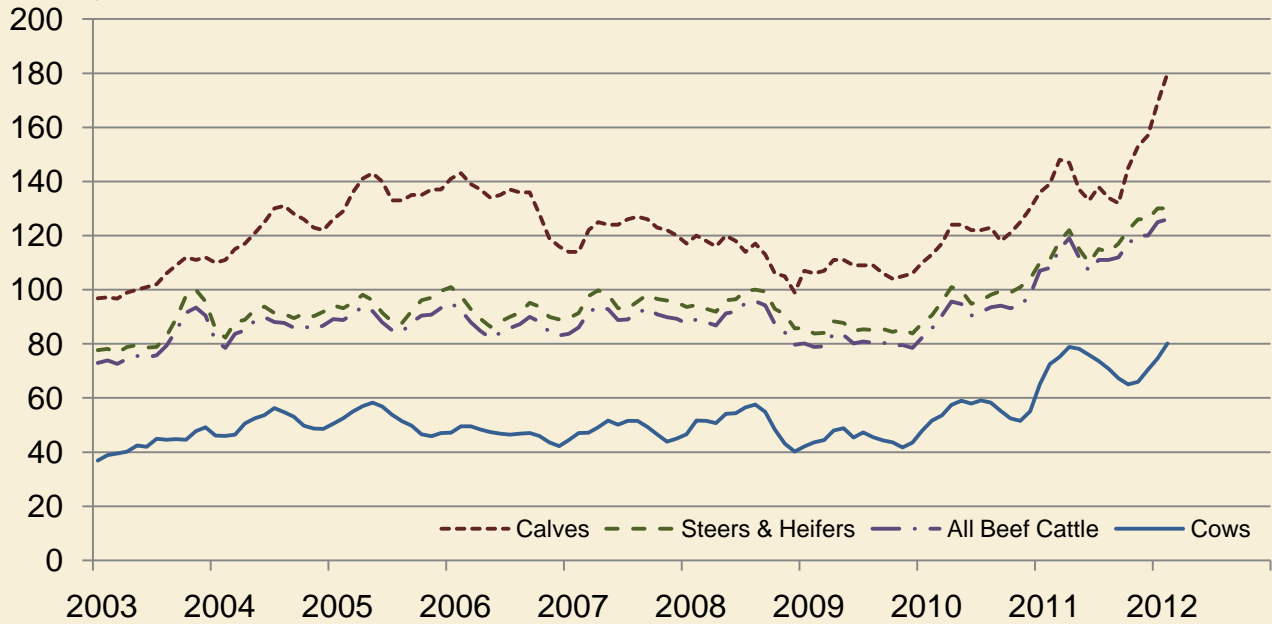
## Prices Received for Soybeans by Month – United States

Dollars per bushel



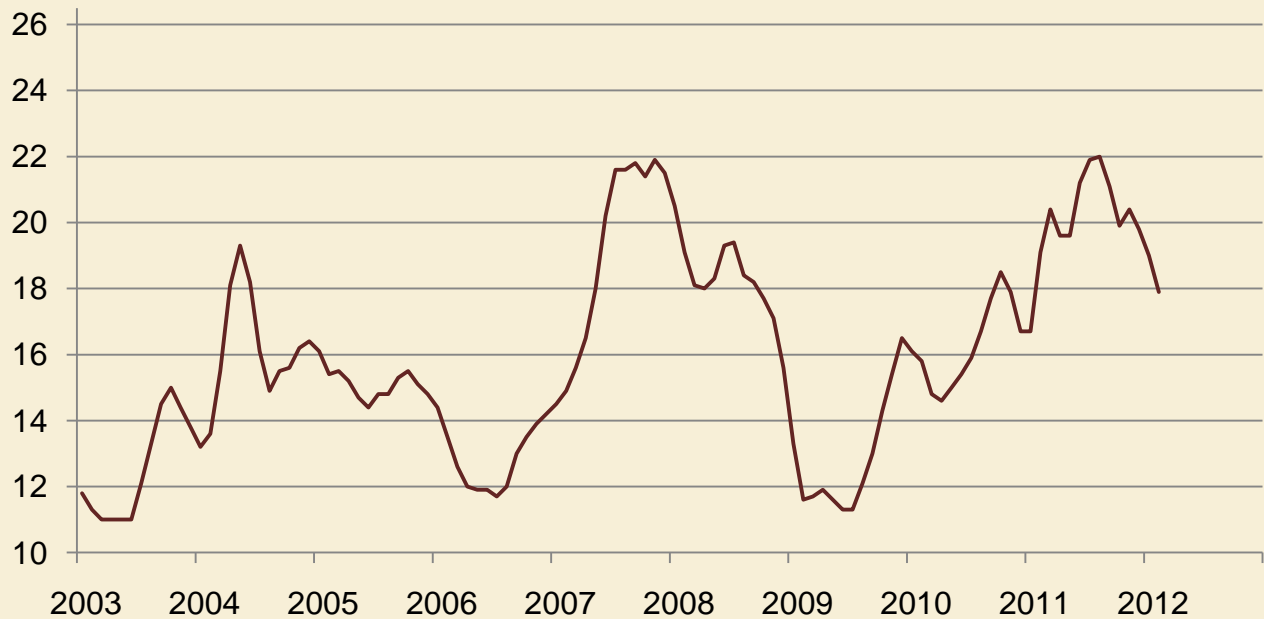
## Prices Received for Cattle by Month – United States

Dollars per cwt



## Prices Received for Milk by Month – United States

Dollars per cwt



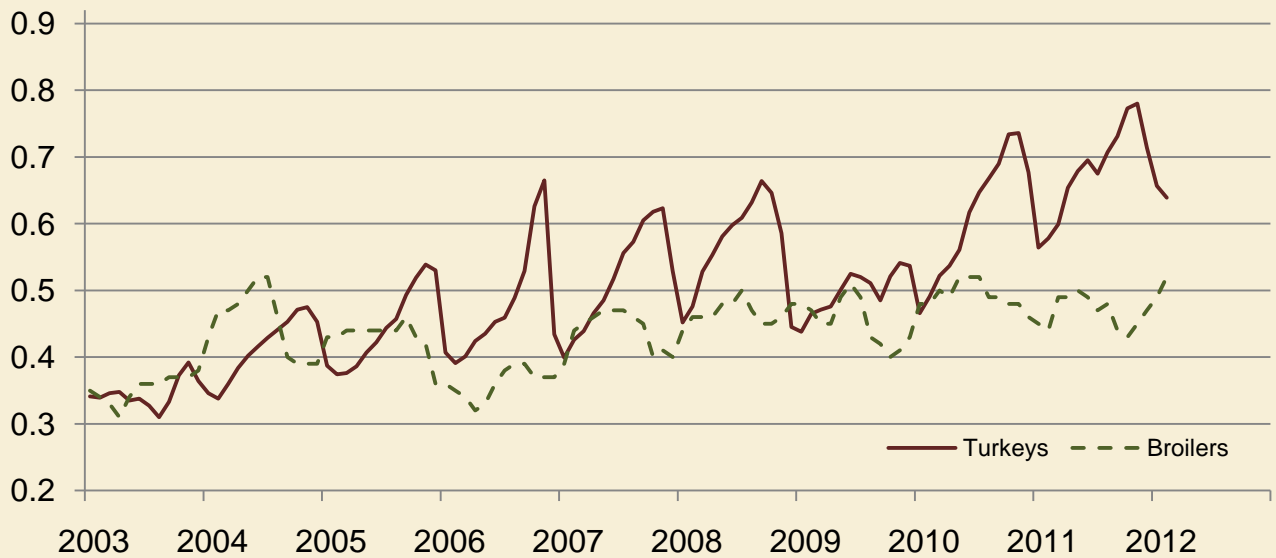
## Prices Received for Hogs by Month – United States

Dollars per cwt



## Prices Received for Poultry by Month – United States

Dollars per pound



## Prices Received for All Wheat, Corn, and Soybeans by Month – United States: 2012 with Comparisons

[Current month prices are mid-month; prices for previous months and years are for the entire month. Blank data cells indicate estimation period has not yet begun]

Month	All wheat			Corn			Soybeans		
	2010	2011	Preliminary 2012	2010	2011	Preliminary 2012	2010	2011	Preliminary 2012
	(dollars per bushel)	(dollars per bushel)	(dollars per bushel)	(dollars per bushel)	(dollars per bushel)	(dollars per bushel)	(dollars per bushel)	(dollars per bushel)	(dollars per bushel)
January .....	4.90	6.69	7.04	3.66	4.94	6.07	9.79	11.60	11.90
February .....	4.73	7.42	7.09	3.55	5.65	6.16	9.41	12.70	12.30
March .....	4.70	7.55		3.55	5.53		9.39	12.70	
April .....	4.41	8.01		3.41	6.36		9.47	13.10	
May .....	4.34	8.16		3.48	6.32		9.41	13.20	
June .....	4.16	7.41		3.41	6.38		9.45	13.20	
July .....	4.49	7.10		3.49	6.33		9.79	13.20	
August .....	5.44	7.61		3.65	6.88		10.10	13.40	
September ...	5.79	7.55		4.08	6.37		9.98	12.20	
October .....	5.88	7.29		4.32	5.71		10.20	11.70	
November ....	6.10	7.26		4.55	5.84		11.10	11.70	
December ....	6.44	7.19		4.82	5.86		11.60	11.50	

## Prices Received for Beef Cattle and All Hogs by Month – United States: 2012 with Comparisons

[Current month prices are mid-month; prices for previous months and years are for the entire month. Blank data cells indicate estimation period has not yet begun]

Month	Beef cattle <sup>1</sup>			All hogs <sup>2</sup>		
	2010	2011	Preliminary 2012	2010	2011	Preliminary 2012
	(dollars per cwt)	(dollars per cwt)	(dollars per cwt)	(dollars per cwt)	(dollars per cwt)	(dollars per cwt)
January .....	82.30	107.00	125.00	48.40	56.00	63.50
February .....	85.70	108.00	126.00	48.90	61.40	65.50
March .....	90.40	115.00		52.10	62.90	
April .....	95.60	119.00		56.50	67.80	
May .....	94.70	112.00		62.20	68.60	
June .....	90.40	107.00		58.20	69.70	
July .....	91.70	111.00		58.50	71.70	
August .....	93.50	111.00		61.30	75.80	
September .....	94.10	112.00		61.00	67.10	
October .....	93.10	117.00		53.30	68.70	
November .....	94.00	120.00		47.80	64.40	
December .....	98.10	120.00		52.40	63.50	

<sup>1</sup> Cows and steers & heifers.

<sup>2</sup> Barrows & gilts and sows.

## Prices Received for All Wheat – States and United States: February 2012 with Comparisons

State	February 2011	January 2012	Preliminary February 2012
	(dollars per bushel)	(dollars per bushel)	(dollars per bushel)
Arizona .....	(D)	(S)	(S)
Arkansas .....	(D)	(D)	6.60
California .....	6.47	(D)	(D)
Colorado .....	6.88	6.48	6.34
Idaho .....	6.73	6.94	7.34
Illinois .....	7.64	6.60	6.50
Indiana .....	7.78	7.42	6.50
Kansas .....	7.99	6.79	6.45
Michigan .....	6.84	6.62	6.40
Minnesota .....	6.78	8.04	8.09
Missouri .....	7.47	6.59	6.45
Montana .....	6.51	7.50	7.21
Nebraska .....	7.24	6.55	6.50
North Carolina .....	(D)	7.14	7.14
North Dakota .....	8.28	8.13	8.03
Ohio .....	6.87	6.49	6.45
Oklahoma .....	7.65	6.95	6.60
Oregon .....	6.79	6.50	6.70
South Dakota .....	8.12	6.99	6.79
Texas .....	8.37	7.05	6.67
Washington .....	7.46	6.43	6.71
United States .....	7.42	7.04	7.09

(D) Withheld to avoid disclosing data for individual operations.

(S) Insufficient number of reports to establish an estimate.

## Prices Received for Winter Wheat – States and United States: February 2012 with Comparisons

State	February 2011	January 2012	Preliminary February 2012
	(dollars per bushel)	(dollars per bushel)	(dollars per bushel)
Arkansas .....	(D)	(D)	6.60
California .....	6.47	(D)	(D)
Colorado .....	6.92	6.48	6.34
Idaho .....	6.24	6.47	6.75
Illinois .....	7.64	6.60	6.50
Indiana .....	7.78	7.42	6.50
Kansas .....	7.99	6.79	6.45
Michigan .....	6.84	6.62	6.40
Minnesota .....	5.44	(D)	7.35
Missouri .....	7.47	6.59	6.45
Montana .....	5.97	6.70	6.40
Nebraska .....	7.24	6.55	6.50
North Carolina .....	(D)	7.14	7.14
North Dakota .....	6.50	6.23	6.10
Ohio .....	6.87	6.49	6.45
Oklahoma .....	7.65	6.95	6.60
Oregon .....	6.76	6.42	6.60
South Dakota .....	7.21	6.59	6.49
Texas .....	8.37	7.05	6.67
Washington .....	7.09	6.10	6.47
United States .....	7.03	6.57	6.49

(D) Withheld to avoid disclosing data for individual operations.

**Prices Received for Durum Wheat – States and United States: February 2012 with Comparisons**

State	February 2011	January 2012	Preliminary February 2012
	(dollars per bushel)	(dollars per bushel)	(dollars per bushel)
Arizona .....	(D)	(S)	(S)
California .....	(S)	(S)	(S)
Idaho .....	(D)	(D)	(D)
Montana .....	7.00	10.30	10.00
North Dakota .....	8.60	8.51	8.55
United States .....	8.45	8.80	8.88

(D) Withheld to avoid disclosing data for individual operations.

(S) Insufficient number of reports to establish an estimate.

**Prices Received for Spring Wheat – States and United States: February 2012 with Comparisons**

State	February 2011	January 2012	Preliminary February 2012
	(dollars per bushel)	(dollars per bushel)	(dollars per bushel)
Colorado .....	(D)	(D)	(S)
Idaho .....	7.48	7.58	7.65
Minnesota .....	6.80	8.04	8.10
Montana .....	7.11	8.41	8.11
North Dakota .....	8.26	8.23	8.05
Oregon .....	7.06	7.09	7.20
South Dakota .....	8.51	8.30	7.80
Washington .....	8.69	7.84	7.60
United States .....	7.68	8.12	7.97

(D) Withheld to avoid disclosing data for individual operations.

(S) Insufficient number of reports to establish an estimate.



### Prices Received for All Barley – States and United States: February 2012 with Comparisons

State	February 2011	January 2012	Preliminary February 2012
	(dollars per bushel)	(dollars per bushel)	(dollars per bushel)
California .....	(S)	(D)	(S)
Colorado .....	4.08	5.22	(S)
Idaho .....	4.26	5.66	5.25
Minnesota .....	(D)	(D)	(D)
Montana .....	3.99	4.96	4.68
North Dakota .....	3.81	5.56	5.74
Oregon .....	4.21	4.06	4.00
Utah .....	4.49	(D)	(D)
Washington .....	4.43	4.56	4.19
Wyoming .....	(D)	(D)	(D)
United States .....	3.95	5.40	5.05

(D) Withheld to avoid disclosing data for individual operations.

(S) Insufficient number of reports to establish an estimate.

### Prices Received for Malting Barley – States: February 2012 with Comparisons

State	February 2011	January 2012	Preliminary February 2012
	(dollars per bushel)	(dollars per bushel)	(dollars per bushel)
Idaho .....	4.23	5.69	(D)
Minnesota .....	(D)	(D)	(D)
Montana .....	4.03	4.97	(D)
North Dakota .....	4.01	5.61	5.90
Wyoming .....	(D)	(D)	(D)

(D) Withheld to avoid disclosing data for individual operations.

### Prices Received for Feed Barley – States: February 2012 with Comparisons

State	February 2011	January 2012	Preliminary February 2012
	(dollars per bushel)	(dollars per bushel)	(dollars per bushel)
Idaho .....	4.63	5.27	(D)
Minnesota .....	3.51	5.45	(D)
Montana .....	3.79	4.90	(D)
North Dakota .....	3.31	5.04	4.80
Wyoming .....	(S)	(D)	(D)

(D) Withheld to avoid disclosing data for individual operations.

(S) Insufficient number of reports to establish an estimate.

## Prices Received for Corn – States and United States: February 2012 with Comparisons

State	February 2011	January 2012	Preliminary February 2012
	(dollars per bushel)	(dollars per bushel)	(dollars per bushel)
Colorado .....	5.36	6.05	6.10
Illinois .....	5.86	6.11	6.20
Indiana .....	5.78	6.21	6.30
Iowa .....	5.59	6.00	6.10
Kansas .....	6.11	6.24	6.30
Kentucky .....	5.60	6.13	6.35
Michigan .....	5.85	5.97	6.00
Minnesota .....	5.36	5.85	6.10
Missouri .....	5.63	6.28	6.45
Nebraska .....	5.49	6.02	6.10
North Carolina .....	6.44	6.84	6.91
North Dakota .....	5.35	5.75	5.90
Ohio .....	5.90	6.19	6.32
Pennsylvania .....	6.82	6.73	6.88
South Dakota .....	5.32	5.93	5.98
Tennessee .....	5.74	6.56	6.75
Texas .....	5.82	6.73	6.78
Wisconsin .....	5.59	5.78	5.97
United States .....	5.65	6.07	6.16

## Prices Received for Soybeans – States and United States: February 2012 with Comparisons

State	February 2011	January 2012	Preliminary February 2012
	(dollars per bushel)	(dollars per bushel)	(dollars per bushel)
Arkansas .....	12.80	12.20	12.40
Illinois .....	12.90	12.10	12.70
Indiana .....	13.00	12.20	12.50
Iowa .....	12.60	11.70	12.20
Kansas .....	13.20	11.50	12.00
Kentucky .....	12.60	12.30	12.50
Louisiana .....	12.50	12.20	12.80
Michigan .....	12.30	11.70	12.10
Minnesota .....	12.10	11.70	12.30
Mississippi .....	12.30	11.90	12.40
Missouri .....	12.40	12.00	12.60
Nebraska .....	12.40	11.40	11.80
North Carolina .....	13.30	11.80	12.20
North Dakota .....	12.50	11.30	11.80
Ohio .....	12.60	12.20	12.70
South Dakota .....	12.60	11.60	11.80
Tennessee .....	12.80	12.10	12.50
Wisconsin .....	12.90	11.90	12.50
United States .....	12.70	11.90	12.30

### Prices Received for Oats – States and United States: February 2012 with Comparisons

State	February 2011	January 2012	Preliminary February 2012
	(dollars per bushel)	(dollars per bushel)	(dollars per bushel)
Illinois .....	(D)	(D)	(S)
Iowa .....	2.95	3.51	3.65
Michigan .....	3.79	4.12	4.30
Minnesota .....	3.12	3.26	3.40
Montana .....	3.13	(D)	(D)
Nebraska .....	3.16	3.58	3.70
New York .....	(D)	4.30	(D)
North Dakota .....	3.34	3.03	(S)
Oregon .....	(D)	(S)	(S)
Pennsylvania .....	3.99	4.28	4.30
South Dakota .....	3.63	3.63	3.71
Texas .....	(S)	(S)	(S)
Wisconsin .....	3.12	3.28	3.59
United States .....	3.27	3.56	3.66

(D) Withheld to avoid disclosing data for individual operations.

(S) Insufficient number of reports to establish an estimate.

### Prices Received for Sorghum Grain – States and United States: February 2012 with Comparisons

State	February 2011	January 2012	Preliminary February 2012
	(dollars per cwt)	(dollars per cwt)	(dollars per cwt)
Arkansas .....	(S)	11.00	(S)
Illinois .....	12.40	11.70	(S)
Kansas .....	10.80	10.80	10.80
Louisiana .....	(D)	(D)	(S)
Missouri .....	11.40	10.90	11.10
Nebraska .....	10.60	10.20	10.50
Oklahoma .....	10.80	10.80	11.00
Texas .....	11.00	11.40	11.60
United States .....	10.90	10.80	10.90

(D) Withheld to avoid disclosing data for individual operations.

(S) Insufficient number of reports to establish an estimate.

**Prices Received for Dry Beans – States and United States: February 2012 with Comparisons**

State	February 2011	January 2012	Preliminary February 2012
	(dollars per cwt)	(dollars per cwt)	(dollars per cwt)
California .....	47.90	(D)	(D)
Colorado .....	27.50	48.20	51.00
Idaho .....	28.80	35.20	46.00
Michigan .....	34.10	49.70	(D)
Minnesota .....	29.10	43.40	(D)
Nebraska .....	29.30	45.00	44.90
North Dakota .....	25.60	39.70	44.40
United States .....	28.60	42.20	46.20

(D) Withheld to avoid disclosing data for individual operations.

**Prices Received for Peanuts (In-Shell) – States and United States: February 2012 with Comparisons**

State	February 2011	January 2012	Preliminary February 2012
	(dollars per pound)	(dollars per pound)	(dollars per pound)
Alabama .....	0.217	0.317	0.317
Florida .....	0.222	0.330	0.305
Georgia .....	0.233	0.324	0.319
Mississippi .....	0.220	0.297	0.372
New Mexico .....	0.242	(D)	(S)
North Carolina .....	0.254	0.303	0.319
Oklahoma .....	(D)	(D)	(D)
South Carolina .....	0.247	0.319	0.303
Texas .....	0.254	0.453	0.371
Virginia .....	0.232	0.299	0.351
United States .....	0.235	0.336	0.321

(D) Withheld to avoid disclosing data for individual operations.

(S) Insufficient number of reports to establish an estimate.

### Prices Received for Sunflower – States and United States: February 2012 with Comparisons

State	February 2011	January 2012	Preliminary February 2012
	(dollars per cwt)	(dollars per cwt)	(dollars per cwt)
Colorado .....	(D)	(D)	(D)
Kansas .....	(D)	(D)	29.20
Minnesota .....	27.30	32.30	(S)
North Dakota .....	27.30	27.50	27.80
South Dakota .....	28.30	30.20	(D)
United States .....	27.40	28.70	27.80

(D) Withheld to avoid disclosing data for individual operations.

(S) Insufficient number of reports to establish an estimate.

### Prices Received for Canola – States and United States: February 2012 with Comparisons

State	February 2011	January 2012	Preliminary February 2012
	(dollars per cwt)	(dollars per cwt)	(dollars per cwt)
Minnesota .....	(D)	(D)	(S)
North Dakota .....	20.40	23.30	24.50
United States .....	20.40	23.30	24.50

(D) Withheld to avoid disclosing data for individual operations.

(S) Insufficient number of reports to establish an estimate.

### Prices Received for Flaxseed – States and United States: February 2012 with Comparisons

State	February 2011	January 2012	Preliminary February 2012
	(dollars per bushel)	(dollars per bushel)	(dollars per bushel)
North Dakota .....	15.30	13.60	13.20
United States .....	15.30	13.60	13.20

## Prices Received for Upland Cotton and Cottonseed – States and United States: February 2012 with Comparisons

[Cottonseed marketing year August - February]

State	Cotton, Upland			Cottonseed		
	February 2011	January 2012	Preliminary February 2012	February 2011	January 2012	Preliminary February 2012
	(dollars per pound)	(dollars per pound)	(dollars per pound)	(dollars per ton)	(dollars per ton)	(dollars per ton)
Alabama .....	0.835	0.906	0.977	149.00	201.00	208.00
Arizona .....	0.967	0.928	(D)	(S)	307.00	299.00
Arkansas .....	0.847	0.966	0.981	(S)	(S)	(S)
California .....	1.220	1.000	(D)	(D)	340.00	(D)
Georgia .....	1.040	0.930	0.951	141.00	205.00	208.00
Louisiana .....	0.802	0.925	(D)	(S)	(S)	(S)
Mississippi .....	0.803	0.952	(D)	(S)	(S)	(S)
North Carolina .....	0.990	0.897	0.939	(S)	189.00	(S)
Tennessee .....	0.908	0.901	0.972	(S)	(S)	(S)
Texas .....	0.902	0.864	0.844	150.00	315.00	311.00
United States .....	0.929	0.903	0.923	172.00	281.00	275.00

(D) Withheld to avoid disclosing data for individual operations.

(S) Insufficient number of reports to establish an estimate.

## Prices Received and Farm Marketings for Upland Cotton and Rice – United States: February 2012 with Comparisons

Item	February 2011	January 2012	Preliminary February 2012
Cotton, Upland			
Average price ..... dollars/pound	0.929	0.903	0.923
Marketings <sup>1</sup> ..... 1,000 bales	1,097	1,544	(NA)
Rice, all			
Average price ..... dollars/cwt	13.40	14.20	13.90
Marketings <sup>2</sup> ..... 1,000 cwt	14,847	14,422	(NA)
Rice, long			
Average price ..... dollars/cwt	12.00	13.60	13.40
Marketings <sup>2</sup> ..... 1,000 cwt	11,726	9,482	(NA)
Rice, medium and short			
Average price ..... dollars/cwt	18.80	15.20	15.30
Marketings <sup>2</sup> ..... 1,000 cwt	3,121	4,940	(NA)

(NA) Not available.

<sup>1</sup> Marketings based on a survey of cotton buyers in the major producing States - Alabama, Arizona, Arkansas, California, Georgia, Louisiana, Mississippi, North Carolina, Tennessee, and Texas.

<sup>2</sup> Purchases by private firms and rice (rough equivalent) shipped by cooperatives.

## Prices Received for Hay by Type – States and United States: February 2012 with Comparisons

State	All hay			Alfalfa hay			Other hay		
	February 2011	January 2012	Preliminary February 2012	February 2011	January 2012	Preliminary February 2012	February 2011	January 2012	Preliminary February 2012
	(dollars per ton)	(dollars per ton)	(dollars per ton)	(dollars per ton)	(dollars per ton)	(dollars per ton)	(dollars per ton)	(dollars per ton)	(dollars per ton)
Arizona .....	153.00	247.00	252.00	155.00	250.00	255.00	125.00	180.00	185.00
California .....	166.00	236.00	244.00	183.00	243.00	250.00	109.00	203.00	215.00
Colorado .....	132.00	231.00	235.00	135.00	240.00	245.00	105.00	165.00	165.00
Idaho .....	146.00	218.00	206.00	149.00	220.00	210.00	115.00	140.00	145.00
Illinois .....	134.00	159.00	140.00	145.00	170.00	150.00	90.00	140.00	110.00
Iowa .....	111.00	144.00	139.00	118.00	152.00	152.00	80.00	98.00	95.00
Kansas .....	104.00	191.00	195.00	115.00	220.00	225.00	70.00	105.00	105.00
Kentucky .....	87.00	113.00	113.00	140.00	190.00	190.00	75.00	90.00	90.00
Michigan .....	101.00	103.00	106.00	110.00	110.00	115.00	80.00	85.00	85.00
Minnesota .....	99.00	135.00	117.00	105.00	140.00	135.00	75.00	90.00	90.00
Missouri .....	75.00	100.00	93.00	140.00	250.00	250.00	60.00	75.00	75.00
Montana .....	77.00	105.00	105.00	77.00	107.00	107.00	74.00	92.00	93.00
Nebraska .....	76.00	128.00	128.00	80.00	137.00	139.00	65.00	93.00	95.00
Nevada .....	142.00	231.00	230.00	143.00	235.00	233.00	120.00	150.00	165.00
New Mexico .....	169.00	298.00	294.00	175.00	305.00	301.00	143.00	227.00	224.00
New York .....	107.00	107.00	102.00	144.00	129.00	134.00	105.00	105.00	100.00
North Dakota .....	62.00	69.00	73.00	64.00	75.00	79.00	45.00	55.00	57.00
Ohio .....	115.00	142.00	148.00	172.00	187.00	209.00	79.00	102.00	94.00
Oklahoma .....	84.00	189.00	190.00	138.00	236.00	241.00	78.00	129.00	135.00
Oregon .....	160.00	218.00	220.00	160.00	239.00	237.00	160.00	195.00	196.00
Pennsylvania .....	123.00	157.00	191.00	163.00	183.00	224.00	113.00	139.00	170.00
South Dakota .....	79.00	122.00	123.00	83.00	133.00	132.00	70.00	87.00	89.00
Texas .....	122.00	164.00	175.00	190.00	265.00	277.00	112.00	153.00	155.00
Utah .....	110.00	187.00	191.00	110.00	191.00	193.00	100.00	153.00	155.00
Washington .....	143.00	229.00	238.00	130.00	245.00	250.00	170.00	200.00	210.00
Wisconsin .....	97.00	113.00	113.00	100.00	125.00	125.00	70.00	90.00	90.00
Wyoming .....	91.00	149.00	144.00	92.00	155.00	150.00	88.00	130.00	125.00
United States .....	116.00	172.00	176.00	129.00	192.00	198.00	95.80	127.00	130.00

## Prices Received for Apples – States and United States: February 2012 with Comparisons

[Equivalent packinghouse-door returns for California, Michigan, New York, and Washington. Prices at point of first sale for other States]

State	Apples, fresh use		
	February 2011	January 2012	Preliminary February 2012
	(dollars per pound)	(dollars per pound)	(dollars per pound)
California .....	(NA)	(NA)	(NA)
Michigan .....	0.305	0.320	0.325
New York .....	0.251	0.317	0.301
Ohio .....	0.370	0.430	0.430
Pennsylvania .....	0.214	(NA)	(NA)
Virginia .....	0.250	0.360	0.390
Washington .....	0.298	0.375	0.356
United States .....	0.280	0.354	0.354

(NA) Not available.

## Prices Received for Citrus Fruits by Utilization – States and United States: February 2011

[Net pounds per box: grapefruit in California-80, Florida-85, Texas-80; lemons-80; oranges in California-80, Florida-90, Texas-85; tangelos-90; tangerines and mandarins in Arizona and California-80, Florida-95]

Commodity, State, and type	FOB packed fresh	Equivalent returns					
		Packinghouse-door			On-tree		
		All	Fresh	Process	All	Fresh	Process
	(dollars per box)	(dollars per box)	(dollars per box)	(dollars per box)	(dollars per box)	(dollars per box)	(dollars per box)
Grapefruit							
California <sup>1</sup> .....	12.80	6.40	6.40	(S)	4.30	4.30	(S)
Florida .....	21.60	8.89	11.75	6.67	6.37	9.56	3.91
White .....	24.20	9.19	14.30	6.25	6.78	12.15	3.70
Colored .....	20.80	8.77	11.00	6.85	6.22	8.80	4.00
Texas .....	22.60	7.14	12.30	1.60	5.66	10.75	0.20
United States .....	21.00	8.81	11.39	6.67	6.31	9.20	3.91
Lemons							
Arizona .....	(D)	(D)	(D)	(D)	(D)	(D)	(D)
California .....	29.40	10.41	18.50	(D)	4.54	12.63	(D)
United States .....	29.20	9.78	18.33	(D)	3.91	12.46	(D)
Oranges							
California							
Navel and miscellaneous ..	20.70	9.54	12.06	(D)	7.09	9.65	(D)
Florida							
Early and mids .....	20.60	8.75	10.60	8.70	6.24	7.85	6.20
United States .....	20.70	8.99	11.96	7.95	6.50	9.52	5.44
Tangelos							
Florida .....	21.40	8.94	11.00	8.22	5.75	7.85	5.02
Tangerines and mandarins							
Arizona .....	(D)	(D)	(D)	(D)	(D)	(D)	(D)
California .....	(D)	(D)	(D)	(D)	(D)	(D)	(D)
Florida .....	29.00	13.26	16.75	8.40	9.76	13.25	4.90
United States .....	30.10	17.66	21.20	3.89	14.68	18.42	0.15

(D) Withheld to avoid disclosing data for individual operations.

(S) Insufficient number of reports to establish an estimate.

<sup>1</sup> Some processed sales included in fresh sales.



## Prices Received for Citrus Fruits by Utilization – States and United States: January 2012

[Net pounds per box: grapefruit in California-80, Florida-85, Texas-80; lemons-80; oranges in California-80, Florida-90, Texas-85; tangelos-90; tangerines and mandarins in Arizona and California-80, Florida-95]

Commodity, State, and type	FOB packed fresh	Equivalent returns					
		Packinghouse-door			On-tree		
		All	Fresh	Process	All	Fresh	Process
	(dollars per box)	(dollars per box)	(dollars per box)	(dollars per box)	(dollars per box)	(dollars per box)	(dollars per box)
Grapefruit							
California <sup>1</sup> .....	16.30	9.77	9.77	(S)	7.63	7.63	(S)
Florida .....	18.70	8.14	9.13	7.36	5.62	6.89	4.63
White .....	19.80	7.87	10.10	7.10	5.38	7.90	4.50
Colored .....	18.55	8.23	8.95	7.50	5.71	6.70	4.70
Texas .....	22.80	7.48	12.50	1.60	6.00	10.95	0.20
United States .....	19.50	8.07	9.96	6.30	5.78	7.88	3.82
Lemons							
Arizona .....	(D)	(D)	(D)	(D)	(D)	(D)	(D)
California .....	38.40	20.26	27.28	(D)	14.27	21.29	(D)
United States .....	38.50	20.36	27.34	(D)	14.37	21.35	(D)
Oranges							
California							
Navel and miscellaneous ..	22.20	11.61	13.39	(D)	9.13	10.93	(D)
Florida							
Early and mids .....	23.10	9.24	12.85	9.15	6.64	10.05	6.55
United States .....	22.30	9.67	13.33	8.89	7.09	10.83	6.29
Tangelos							
Florida .....	42.20	17.77	31.10	10.30	14.65	27.95	7.20
Tangerines and mandarins							
Arizona .....	(D)	(D)	(D)	(D)	(D)	(D)	(D)
California .....	(D)	(D)	(D)	(D)	(D)	(D)	(D)
Florida .....	35.00	17.96	22.70	9.80	14.12	19.00	5.70
United States .....	33.20	19.05	23.47	6.21	15.73	20.42	2.10

(D) Withheld to avoid disclosing data for individual operations.

(S) Insufficient number of reports to establish an estimate.

<sup>1</sup> Some processed sales included in fresh sales.

## Prices Received for Citrus Fruits by Utilization – States and United States: February 2012

[Net pounds per box: grapefruit in California-80, Florida-85, Texas-80; lemons-80; oranges in California-80, Florida-90, Texas-85; tangelos-90; tangerines and mandarins in Arizona and California-80, Florida-95]

Commodity, State, and type	FOB packed fresh	Equivalent returns					
		Packinghouse-door			On-tree		
		All	Fresh	Process	All	Fresh	Process
	(dollars per box)	(dollars per box)	(dollars per box)	(dollars per box)	(dollars per box)	(dollars per box)	(dollars per box)
Grapefruit							
California <sup>1</sup> .....	17.20	10.67	10.67	(D)	8.53	8.53	(D)
Florida .....	18.60	8.40	8.94	8.10	5.86	6.70	5.39
White .....	18.40	7.71	8.70	7.45	5.20	6.50	4.85
Colored .....	18.60	8.74	9.00	8.55	6.18	6.75	5.75
Texas .....	23.80	7.66	13.50	1.60	6.19	11.95	0.20
United States .....	19.60	8.33	9.96	7.27	5.96	7.87	4.72
Lemons							
Arizona .....	(D)	(D)	(D)	(D)	(D)	(D)	(D)
California .....	35.60	17.60	24.48	(D)	11.61	18.49	(D)
United States .....	35.50	17.53	24.40	(D)	11.54	18.41	(D)
Oranges							
California							
Navel and miscellaneous ..	21.60	10.27	12.79	(D)	7.77	10.33	(D)
Florida							
Early and mids .....	24.10	10.19	13.85	10.10	7.58	11.05	7.50
United States .....	21.80	10.21	12.85	9.25	7.64	10.37	6.65
Tangelos							
Florida .....	35.30	17.45	24.20	10.70	14.33	21.05	7.60
Tangerines and mandarins							
Arizona .....	(D)	(D)	(D)	(D)	(D)	(D)	(D)
California .....	(D)	(D)	(D)	(D)	(D)	(D)	(D)
Florida .....	28.30	13.62	16.00	10.40	9.75	12.30	6.30
United States .....	33.50	21.59	24.40	8.00	18.50	21.52	3.89

(D) Withheld to avoid disclosing data for individual operations.

<sup>1</sup> Some processed sales included in fresh sales.

## Prices Received for Potatoes – States and United States: February 2012 with Comparisons

State	February 2011	January 2012	Preliminary February 2012
	(dollars per cwt)	(dollars per cwt)	(dollars per cwt)
California			
Spring .....	(S)	(S)	(S)
Fall .....	9.70	8.50	8.50
All <sup>1</sup> .....	9.70	8.50	8.50
Colorado			
Fresh <sup>1</sup> .....	13.90	12.70	(D)
All <sup>1</sup> .....	13.40	11.20	10.80
Florida .....	(S)	(S)	(S)
Idaho			
Fresh <sup>2</sup> .....	9.10	7.50	(D)
Processing .....	6.50	8.30	(D)
All <sup>1</sup> .....	7.60	8.05	8.10
Maine .....	10.30	10.30	10.70
Michigan .....	11.90	12.30	12.70
Minnesota .....	6.65	6.95	(D)
New York .....	14.00	14.60	14.70
North Carolina .....	(S)	(S)	(S)
North Dakota			
Fresh <sup>2</sup> .....	12.10	15.10	(D)
Processing .....	7.90	7.25	(D)
All <sup>1</sup> .....	9.30	10.00	(D)
Oregon .....	9.05	9.55	9.35
Texas .....	(S)	(S)	(S)
Virginia .....	(S)	(S)	(S)
Washington			
Processing .....	7.00	7.85	(D)
All <sup>1</sup> .....	8.70	8.80	8.95
Wisconsin			
Fresh <sup>2</sup> .....	12.70	10.60	(D)
Processing .....	10.10	9.35	(D)
All <sup>1</sup> .....	11.00	10.00	10.00
United States			
Fresh <sup>2</sup> .....	12.07	10.66	(D)
Processing .....	7.63	8.30	(D)
All <sup>1</sup> .....	9.26	9.23	9.22

(D) Withheld to avoid disclosing data for individual operations.

(S) Insufficient number of reports to establish an estimate.

<sup>1</sup> Average price of potatoes sold for all uses, including table stock, processing, seed, and livestock feed.

<sup>2</sup> Fresh market prices only. Includes table stock prices.

## Prices Received for All Milk – States and United States: February 2012 with Comparisons

[Before deduction for hauling. Includes quality, quantity, and other premiums. Excludes hauling subsidies]

State	February 2011		January 2012		Preliminary February 2012	
	Price	Fat test	Price	Fat test	Price	Fat test
	(dollars per cwt)	(percent)	(dollars per cwt)	(percent)	(dollars per cwt)	(percent)
Arizona .....	18.30	3.62	18.30	3.60	17.40	3.55
California .....	18.01	3.77	16.61	3.87	15.80	3.78
Colorado .....	18.90	3.66	19.30	3.62	18.00	3.59
Florida .....	21.90	3.71	23.50	3.67	22.00	3.64
Idaho .....	17.90	3.75	17.70	3.72	17.20	3.68
Illinois .....	19.50	3.82	19.50	3.85	18.20	3.81
Indiana .....	19.70	3.78	19.80	3.75	18.40	3.70
Iowa .....	19.30	3.76	19.60	3.81	18.20	3.78
Kansas .....	20.20	3.87	19.60	3.86	18.50	3.83
Michigan .....	19.20	3.74	19.80	3.74	18.80	3.72
Minnesota .....	19.50	3.80	19.70	3.88	18.90	3.84
Missouri .....	18.40	3.79	20.00	3.80	18.80	3.77
New Mexico .....	18.50	3.76	18.40	3.67	17.40	3.65
New York .....	19.60	3.82	20.50	3.81	18.80	3.79
Ohio .....	20.40	3.88	20.50	3.83	19.10	3.76
Oregon .....	20.10	3.85	20.00	3.90	19.00	3.85
Pennsylvania .....	20.70	3.80	21.10	3.79	19.30	3.75
Texas .....	19.90	3.95	19.60	3.87	18.60	3.84
Utah .....	18.40	3.78	18.20	3.79	17.60	3.71
Vermont .....	20.10	3.86	20.60	3.86	19.20	3.85
Virginia .....	21.30	3.82	22.20	3.84	20.60	3.78
Washington .....	19.40	3.85	19.40	3.90	18.30	3.85
Wisconsin .....	19.20	3.77	19.50	3.80	18.40	3.79
United States .....	19.10	3.79	19.00	3.81	17.90	3.76

## Prices Received for Milk Cows – States and United States: January 2012 with Comparisons

[Animals sold for dairy herd replacement only. Prices estimated in January, April, July, and October]

State	January 2011 (dollars per head)	October 2011 (dollars per head)	January 2012 (dollars per head)
Arizona .....	1,380	1,550	1,500
California .....	1,200	1,400	1,400
Colorado .....	1,330	1,550	1,500
Florida .....	1,360	1,620	1,490
Idaho .....	1,200	1,450	1,450
Illinois .....	1,330	1,460	1,500
Indiana .....	1,350	1,550	1,450
Iowa .....	1,250	1,450	1,400
Kansas .....	1,200	1,400	1,400
Michigan .....	1,450	1,600	1,600
Minnesota .....	1,310	1,440	1,430
Missouri .....	1,130	1,270	1,200
New Mexico .....	1,320	1,480	1,380
New York .....	1,300	1,450	1,450
Ohio .....	1,360	1,510	1,500
Oregon .....	1,290	1,430	1,440
Pennsylvania .....	1,400	1,550	1,500
Texas .....	1,200	1,400	1,400
Utah .....	1,140	1,380	1,340
Vermont .....	1,450	1,650	1,550
Virginia .....	1,360	1,490	1,520
Washington .....	1,300	1,450	1,400
Wisconsin .....	1,430	1,560	1,550
United States .....	1,300	1,480	1,460

## Commodity Parity Prices and Price as Percent of Parity Price – United States: February 2012 with Comparisons

[Parity prices are computed under the provisions of Title III, Subtitle a, Section 301 (a) of the Agricultural Adjustment Act of 1938 as amended by the Agricultural Acts of 1948, 1949, and 1956. See January *Agricultural Prices* for details on adjusted base price and parity price computations. Parity data not available for blank cells. Primary source of data for livestock and milk prices is United States Department of Agriculture's Agricultural Marketing Service]

Commodity and unit	Adjusted base price	Parity price			Price as percent of parity		
		February 2011	January 2012	February 2012	February 2011	January 2012	February 2012
	(dollars)	(dollars)	(dollars)	(dollars)	(percent)	(percent)	(percent)
<b>Basic commodities</b>							
All wheat .....bushel	0.634	15.90	17.50	17.70	47	40	40
Rice .....cwt	1.46	42.70	40.30	40.70	31	35	34
Corn .....bushel	0.414	10.10	11.40	11.50	56	53	54
<b>Cotton</b>							
Upland ..... pound	0.072	1.86	1.99	2.01	50	45	46
American Pima ..... pound	0.141	3.38	3.89	3.93	53	42	42
Peanuts ..... pound	0.026	0.707	0.718	0.725	33	47	44
<b>Designated nonbasic</b>							
All milk, to plants <sup>1</sup> .....cwt	1.80	47.60	49.70	50.20	41	38	36
Honey, extracted <sup>2</sup> ..... pound	0.139	3.51	3.84	3.88	46	42	41
<b>Wool and mohair</b>							
Wool ..... pound	0.104	2.41	2.87	2.90	48	58	58
Mohair ..... pound	0.333	8.48	9.19	9.29	41	45	44
<b>Other nonbasic</b>							
Apples, fresh <sup>3</sup> ..... pound	0.033	0.864	0.911	0.920	32	39	38
Barley .....bushel	0.436	11.10	12.00	12.20	36	45	41
Canola .....cwt	1.820	45.60	50.20	50.80	45	46	48
Cottonseed ..... ton	17.40	403.00	480.00	485.00	43	59	57
Dry edible beans .....cwt	3.01	76.40	83.10	83.90	37	51	55
Flaxseed .....bushel	1.100	26.70	30.40	30.70	57	45	43
Oats .....bushel	0.263	6.55	7.26	7.34	50	49	50
Potatoes .....cwt	0.855	21.80	23.60	23.80	42	39	39
Sorghum grain .....cwt	0.729	17.70	20.10	20.30	62	54	54
Soybeans .....bushel	1.000	24.80	27.60	27.90	51	43	44
Sunflower, all .....cwt	2.06	50.00	56.90	57.50	55	50	48
<b>Citrus (equivalent on-tree)</b>							
Grapefruit .....box	0.690	17.40	19.00	19.20	36	30	31
Lemons .....box	1.37	35.60	37.80	38.20	11	38	30
Oranges .....box	0.698	18.00	19.30	19.50	36	37	39
Tangerines .....box	1.49	37.40	41.10	41.60	39	38	44
<b>Livestock and poultry</b>							
Beef cattle .....cwt	10.10	264.00	279.00	282.00	41	45	45
Calves .....cwt	13.90	369.00	384.00	388.00	38	44	46
Hogs .....cwt	5.53	144.00	153.00	154.00	43	42	43
Eggs <sup>1</sup> .....dozen	0.091	2.38	2.51	2.54	38	32	33
Turkeys, live ..... pound	0.057	1.470	1.570	1.590	39	42	40

<sup>1</sup> Seasonally adjusted price as percentage of parity price.

<sup>2</sup> Wholesale extracted. Adjusted base price derived from state annual averages prices weighted by production. For 1982 through 1985 the national averages are the support prices.

<sup>3</sup> Equivalent packinghouse-door returns for California, New York (apples only), Oregon (except peaches), and Washington. Price at point of first sale for other states.

## Commodity Parity Prices – United States: February 2012 with Comparisons

[Parity prices are computed under the provisions of Title III, Subtitle a, Section 301 (a) of the Agricultural Adjustment Act of 1938 as amended by the Agricultural Acts of 1948, 1949, and 1956. See January *Agricultural Prices* for details on adjusted base price and parity price computations]

Commodity and unit	Adjusted base price	Parity price			
		February 2011	January 2012	February 2012	
	(dollars)	(dollars)	(dollars)	(dollars)	
<b>Field crops and miscellaneous</b>					
Hops .....	pound	0.306	8.04	8.45	8.53
Mustard seed .....	cwt	2.82	69.60	77.80	78.60
Rapeseed .....	cwt	2.23	56.00	61.50	62.20
Rye .....	bushel	0.525	12.90	14.50	14.60
Safflower .....	cwt	2.02	50.80	55.80	56.30
Spearmint oil .....	pound	1.50	37.70	41.40	41.80
Sweet potatoes .....	cwt	2.20	59.40	60.70	61.40
<b>Tobacco</b>					
Flue-cured, 11-14 .....	pound	0.196	5.45	5.41	5.47
Fire-cured, 21-23 .....	pound	0.283	7.67	7.81	7.89
Burley, 31 .....	pound	0.202	5.60	5.58	5.63
Maryland, 32 .....	pound	0.174	4.79	4.80	4.85
Dark air-cured, 35-37 .....	pound	0.256	6.83	7.07	7.14
Pennsylvania seedleaf, 41 .....	pound	0.182	5.00	5.02	5.08
Cigar binder, 51 .....	pound	0.640	17.70	17.70	17.80
<b>Noncitrus fruit</b>					
Apples, processing <sup>1 9</sup> .....	ton	16.10	421.00	444.00	449.00
Apricots					
Fresh <sup>2 9</sup> .....	ton	114.00	2,980.00	3,150.00	3,180.00
Dried (California) <sup>9</sup> .....	ton	262.00	6,860.00	7,230.00	7,310.00
Avocados <sup>2 9</sup> .....	ton	198.00	5,180.00	5,460.00	5,520.00
Cherries					
Sweet <sup>9</sup> .....	ton	210.00	5,500.00	5,800.00	5,860.00
Tart <sup>9</sup> .....	pound	0.034	0.890	0.938	0.948
Cranberry <sup>3 9</sup> .....	barrel	4.89	128.00	135.00	136.00
Dates (California) <sup>2 9</sup> .....	ton	183.00	4,790.00	5,050.00	5,100.00
<b>Grapes</b>					
Raisin variety <sup>9</sup> .....	ton	117.00	3,060.00	3,230.00	3,260.00
Other dried <sup>9</sup> .....	ton	65.40	1,710.00	1,810.00	1,820.00
Kiwifruit <sup>9</sup> .....	ton	94.40	2,470.00	2,610.00	2,630.00
Nectarines, fresh (California) <sup>2 9</sup> .....	ton	55.30	1,450.00	1,530.00	1,540.00
Olives, canning (California) <sup>3 9</sup> .....	ton	87.40	2,290.00	2,410.00	2,440.00

See footnote(s) at end of table.

--continued

## Commodity Parity Prices – United States: February 2012 with Comparisons (continued)

[Parity prices are computed under the provisions of Title III, Subtitle a, Section 301 (a) of the Agricultural Adjustment Act of 1938 as amended by the Agricultural Acts of 1948, 1949, and 1956. See January *Agricultural Prices* for details on adjusted base price and parity price computations]

Commodity and unit	Adjusted base price	Parity price			
		February 2011	January 2012	February 2012	
	(dollars)	(dollars)	(dollars)	(dollars)	
Noncitrus fruit - continued					
Papayas (Hawaii) <sup>9</sup> .....	pound	0.046	1.20	1.27	1.28
Peaches					
Fresh <sup>4 9</sup> .....	ton	83.00	2,170.00	2,290.00	2,310.00
Dried (California) <sup>9</sup> .....	ton	57.30	1,500.00	1,580.00	1,600.00
Processing, excludes dried					
Clingstone (California) <sup>3 9</sup> .....	ton	33.70	882.00	930.00	940.00
Pears					
Fresh <sup>4 9</sup> .....	ton	55.60	1,460.00	1,530.00	1,550.00
Dried (California) <sup>1 9</sup> .....	ton	178.00	4,660.00	4,910.00	4,960.00
Plums (California)					
Fresh, equivalent on-tree <sup>9</sup> .....	ton	60.20	1,580.00	1,660.00	1,680.00
Prunes, dried (California) <sup>1 9</sup> .....	ton	147.00	3,850.00	4,060.00	4,100.00
Prunes and plums					
Fresh, excludes California <sup>5 9</sup> .....	ton	63.80	1,670.00	1,760.00	1,780.00
Processing, excludes dried <sup>1 9</sup> .....	ton	25.70	673.00	709.00	717.00
Tree nuts <sup>6 9</sup>					
Almonds .....	pound	0.209	5.47	5.77	5.83
Hazelnuts .....	ton	183.00	4,790.00	5,050.00	5,100.00
Pistachios .....	pound	0.194	5.08	5.35	5.41
Walnuts .....	ton	177.00	4,630.00	4,890.00	4,940.00
Vegetables, fresh <sup>7</sup>					
Carrots <sup>8</sup> .....	cwt	2.69	68.30	74.20	75.00
Cauliflower <sup>8</sup> .....	cwt	4.31	112.00	119.00	120.00
Celery <sup>8</sup> .....	cwt	2.01	53.70	55.50	56.10
Honeydew melons .....	cwt	2.09	56.80	57.70	58.30
Lettuce .....	cwt	2.29	61.50	63.20	63.90
Onions <sup>8</sup> .....	cwt	1.49	41.10	41.10	41.60
Tomatoes .....	cwt	4.68	124.00	129.00	131.00

<sup>1</sup> Equivalent returns at processing plant door.

<sup>2</sup> Equivalent returns at packinghouse door.

<sup>3</sup> Equivalent returns for bulk fruit at first delivery point.

<sup>4</sup> Equivalent packinghouse-door returns for California, New York (apples only), Oregon (except peaches), and Washington. Price at point of first sale for other states.

<sup>5</sup> Based on "as sold" prices for fresh fruit in all states.

<sup>6</sup> Prices In-Shell basis except almonds which are shelled basis.

<sup>7</sup> FOB shipping point prices.

<sup>8</sup> Includes some processing.

<sup>9</sup> Non-citrus fruit and tree nut estimates discontinued October 2011. The program was later reinstated with a publication date of March 15, 2012. Parity prices will be published in the July 2012 "Agricultural Prices" report to include these prices.



## Market Year for Specified Commodities

**Cattle:** January 1 - December 31 for United States and all States.

**Hogs:** December 1 - November 30 for United States and all States.

**Sheep and Lambs:** January 1 - December 31 for United States and all States.

### Cattle Market Year Average Prices Received – United States: Marketing Years 2010 and 2011

[All beef includes steer and heifers combined and cows. Cows includes beef cows and cull dairy cows sold for slaughter. Milk cow prices are calendar year average]

Year	Cows	Steers and heifers	Beef cattle	Calves	Milk cows
	(dollars per cwt)	(dollars per cwt)	(dollars per cwt)	(dollars per cwt)	(dollars per head)
2010 .....	54.80	97.70	117.00	92.20	1,330.00
2011 .....	71.20	117.00	142.00	113.00	1,420.00

### Hog Market Year Average Prices Received – United States: Marketing Years 2010 and 2011

Year	Barrows and gilts	Sows	All
	(dollars per cwt)	(dollars per cwt)	(dollars per cwt)
2010 .....	54.40	48.70	54.10
2011 .....	65.70	57.50	65.30

### Lamb and Sheep Market Year Average Prices Received – United States: Marketing Years 2010 and 2011

Year	Sheep	Lambs
	(dollars per cwt)	(dollars per cwt)
2010 .....	49.70	125.00
2011 .....	(NA)	(NA)

(NA) Not available.

**Milk Cow Market Year Average Prices Received – States and United States: Marketing Years 2010 and 2011**

[Calendar year average]

State	2010 (dollars per head)	2011 (dollars per head)
Alabama .....	1,300.00	1,400.00
Alaska .....	1,300.00	1,300.00
Arizona .....	1,350.00	1,470.00
Arkansas .....	1,200.00	1,250.00
California .....	1,300.00	1,330.00
Colorado .....	1,310.00	1,470.00
Connecticut .....	1,360.00	1,400.00
Delaware .....	1,400.00	1,400.00
Florida .....	1,390.00	1,500.00
Georgia .....	1,350.00	1,480.00
Hawaii .....	1,530.00	1,520.00
Idaho .....	1,340.00	1,400.00
Illinois .....	1,370.00	1,420.00
Indiana .....	1,290.00	1,460.00
Iowa .....	1,250.00	1,400.00
Kansas .....	1,250.00	1,350.00
Kentucky .....	1,290.00	1,400.00
Louisiana .....	1,320.00	1,400.00
Maine .....	1,280.00	1,400.00
Maryland .....	1,340.00	1,440.00
Massachusetts .....	1,380.00	1,450.00
Michigan .....	1,400.00	1,540.00
Minnesota .....	1,270.00	1,410.00
Mississippi .....	1,230.00	1,310.00
Missouri .....	1,150.00	1,240.00
Montana .....	1,340.00	1,390.00
Nebraska .....	1,290.00	1,430.00
Nevada .....	1,240.00	1,250.00
New Hampshire .....	1,350.00	1,500.00
New Jersey .....	1,420.00	1,500.00
New Mexico .....	1,340.00	1,410.00
New York .....	1,300.00	1,400.00
North Carolina .....	1,460.00	1,480.00
North Dakota .....	1,190.00	1,280.00
Ohio .....	1,330.00	1,470.00
Oklahoma .....	1,200.00	1,310.00
Oregon .....	1,320.00	1,390.00
Pennsylvania .....	1,400.00	1,490.00
Rhode Island .....	1,330.00	1,500.00
South Carolina .....	1,430.00	1,500.00
South Dakota .....	1,250.00	1,360.00
Tennessee .....	1,290.00	1,380.00
Texas .....	1,270.00	1,360.00
Utah .....	1,160.00	1,290.00
Vermont .....	1,360.00	1,580.00
Virginia .....	1,300.00	1,430.00
Washington .....	1,300.00	1,400.00
West Virginia .....	1,300.00	1,470.00
Wisconsin .....	1,430.00	1,530.00
Wyoming .....	1,100.00	1,350.00
United States .....	1,330.00	1,420.00

## Prices Received for Cows, Steers and Heifers, Calves, Beef Cattle, and Milk Cows by Month – United States: Marketing Years 2010 and 2011

[All beef includes steer & heifers combined and cows. Cows includes beef cows and cull dairy cows sold for slaughter. Milk cow prices are calendar year average]

Month	Cows		Steers and heifers		Calves		Beef cattle		Milk cows	
	2010	2011	2010	2011	2010	2011	2010	2011	2010	2011
	(dollars per cwt)	(dollars per cwt)	(dollars per cwt)	(dollars per cwt)	(dollars per cwt)	(dollars per cwt)	(dollars per cwt)	(dollars per cwt)	(dollars per head)	(dollars per head)
January .....	47.90	65.00	87.60	110.00	110.00	136.00	82.30	107.00	1,340.00	1,300.00
February .....	51.70	72.50	90.50	111.00	113.00	139.00	85.70	108.00	(NA)	(NA)
March .....	53.50	75.20	95.70	118.00	117.00	148.00	90.40	115.00	(NA)	(NA)
April .....	57.50	78.90	101.00	122.00	124.00	147.00	95.60	119.00	1,330.00	1,420.00
May .....	59.00	78.20	99.70	115.00	124.00	137.00	94.70	112.00	(NA)	(NA)
June .....	57.90	75.90	94.80	110.00	122.00	133.00	90.40	107.00	(NA)	(NA)
July .....	59.10	73.60	96.00	115.00	122.00	138.00	91.70	111.00	1,320.00	1,480.00
August .....	58.30	70.80	98.10	114.00	123.00	134.00	93.50	111.00	(NA)	(NA)
September .....	55.20	67.30	99.50	117.00	118.00	132.00	94.10	112.00	(NA)	(NA)
October .....	52.50	65.00	98.90	122.00	121.00	145.00	93.10	117.00	1,330.00	1,480.00
November .....	51.50	66.00	101.00	126.00	125.00	153.00	94.00	120.00	(NA)	(NA)
December .....	55.10	70.50	104.00	126.00	130.00	157.00	98.10	120.00	(NA)	(NA)

(NA) Not available.

## Prices Received for Borrows and Gilts, Sows, and All Hogs by Month – United States: Marketing Years 2010 and 2011

[December preceding year]

Month	Borrows and gilts		Sows		All hogs	
	2010	2011	2010	2011	2010	2011
	(dollars per cwt)	(dollars per cwt)	(dollars per cwt)	(dollars per cwt)	(dollars per cwt)	(dollars per cwt)
December .....	45.60	52.60	32.10	48.60	45.10	52.40
January .....	48.90	56.30	38.30	47.80	48.40	56.00
February .....	48.90	61.70	49.20	53.30	48.90	61.40
March .....	52.30	63.10	48.80	58.00	52.10	62.90
April .....	56.60	68.20	53.30	57.90	56.50	67.80
May .....	62.40	69.20	56.70	56.00	62.20	68.60
June .....	58.50	70.40	53.20	53.70	58.20	69.70
July .....	58.70	72.40	54.20	55.80	58.50	71.70
August .....	61.50	76.10	57.90	68.90	61.30	75.80
September .....	61.20	67.20	57.80	65.10	61.00	67.10
October .....	53.50	69.00	49.40	61.80	53.30	68.70
November .....	48.00	64.50	43.30	60.80	47.80	64.40

## Prices Received for Sheep, and Lambs by Month – United States: Marketing Years 2010 and 2011

[Sheep & Lamb price program discontinued October 2011]

Month	Sheep		Lambs	
	2010	2011	2010	2011
	(dollars per cwt)	(dollars per cwt)	(dollars per cwt)	(dollars per cwt)
January .....	53.30	81.90	101.00	149.00
February .....	54.80	76.00	106.00	155.00
March .....	51.30	81.40	115.00	169.00
April .....	49.40	68.80	118.00	181.00
May .....	46.20	55.40	122.00	181.00
June .....	42.10	50.80	119.00	189.00
July .....	43.80	56.50	122.00	194.00
August .....	47.60	66.80	127.00	189.00
September .....	48.70	58.40	135.00	189.00
October .....	48.40	(NA)	137.00	(NA)
November .....	54.80	(NA)	143.00	(NA)
December .....	66.20	(NA)	146.00	(NA)

(NA) Not available.

## Prices Received for Milk Cows by Month – States: 2011 and United States: 2010 and 2011

[Cows sold for dairy herd replacement]

State	January 2011	April 2011	July 2011	October 2011
	(dollars per head)	(dollars per head)	(dollars per head)	(dollars per head)
Arizona .....	1,380	1,450	1,500	1,550
California .....	1,200	1,300	1,400	1,400
Colorado .....	1,330	1,450	1,550	1,550
Florida .....	1,360	1,480	1,550	1,620
Idaho .....	1,200	1,450	1,500	1,450
Illinois .....	1,330	1,430	1,440	1,460
Indiana .....	1,350	1,450	1,500	1,550
Iowa .....	1,250	1,430	1,470	1,450
Kansas .....	1,200	1,400	1,400	1,400
Michigan .....	1,450	1,550	1,550	1,600
Minnesota .....	1,310	1,410	1,480	1,440
Missouri .....	1,130	1,280	1,290	1,270
New Mexico .....	1,320	1,380	1,460	1,480
New York .....	1,300	1,400	1,450	1,450
Ohio .....	1,360	1,470	1,520	1,510
Oregon .....	1,290	1,390	1,450	1,430
Pennsylvania .....	1,400	1,450	1,550	1,550
Texas .....	1,200	1,400	1,450	1,400
Utah .....	1,140	1,300	1,340	1,380
Vermont .....	1,450	1,550	1,650	1,650
Virginia .....	1,360	1,410	1,460	1,490
Washington .....	1,300	1,400	1,450	1,450
Wisconsin .....	1,430	1,560	1,570	1,560
United States				
2011 .....	1,300	1,420	1,480	1,480
2010 .....	1,340	1,330	1,320	1,330

**Prices Received Value per Head for All Cattle and Calves –  
States and United States: January 1, 2011 and 2012**

State	Value per head		Total value	
	2011 (dollars)	2012 (dollars)	2011 (1,000 dollars)	2012 (1,000 dollars)
Alabama .....	730	870	897,900	1,052,700
Alaska .....	1,000	1,100	13,500	14,300
Arizona .....	980	1,100	852,600	1,012,000
Arkansas .....	770	920	1,324,400	1,536,400
California .....	980	1,160	5,096,000	6,206,000
Colorado .....	1,080	1,250	2,862,000	3,437,500
Connecticut .....	990	1,030	48,510	50,470
Delaware .....	930	1,020	16,740	19,380
Florida .....	780	920	1,271,400	1,573,200
Georgia .....	810	920	834,300	938,400
Hawaii .....	650	780	91,650	109,200
Idaho .....	1,010	1,230	2,242,200	2,730,600
Illinois .....	950	1,150	1,045,000	1,230,500
Indiana .....	920	1,000	782,000	860,000
Iowa .....	980	1,190	3,822,000	4,641,000
Kansas .....	940	1,120	5,922,000	6,832,000
Kentucky .....	820	950	1,795,800	2,042,500
Louisiana .....	820	910	647,800	718,900
Maine .....	930	1,050	83,700	90,300
Maryland .....	940	980	183,300	196,000
Massachusetts .....	910	960	36,400	39,360
Michigan .....	1,000	1,170	1,090,000	1,298,700
Minnesota .....	970	1,110	2,308,600	2,619,600
Mississippi .....	680	800	612,000	760,000
Missouri .....	920	1,070	3,634,000	4,173,000
Montana .....	1,150	1,360	2,875,000	3,400,000
Nebraska .....	1,040	1,240	6,448,000	7,998,000
Nevada .....	1,000	1,180	460,000	554,600
New Hampshire .....	1,020	1,060	34,680	37,100
New Jersey .....	1,000	1,080	32,000	33,480
New Mexico .....	980	1,080	1,509,200	1,501,200
New York .....	1,020	1,110	1,428,000	1,565,100
North Carolina .....	720	820	576,000	664,200
North Dakota .....	1,210	1,420	2,057,000	2,399,800
Ohio .....	950	1,040	1,168,500	1,331,200
Oklahoma .....	860	1,010	4,386,000	4,545,000
Oregon .....	1,010	1,140	1,343,300	1,482,000
Pennsylvania .....	970	1,090	1,561,700	1,754,900
Rhode Island .....	930	1,000	4,557	4,500
South Carolina .....	740	830	284,900	307,100
South Dakota .....	1,150	1,360	4,255,000	4,964,000
Tennessee .....	760	910	1,512,400	1,792,700
Texas .....	860	1,000	11,438,000	11,900,000
Utah .....	990	1,180	792,000	944,000
Vermont .....	1,080	1,170	291,600	304,200
Virginia .....	780	950	1,201,200	1,415,500
Washington .....	1,000	1,140	1,090,000	1,265,400
West Virginia .....	840	990	310,800	386,100
Wisconsin .....	1,070	1,220	3,691,500	4,148,000
Wyoming .....	1,170	1,330	1,521,000	1,808,800
United States .....	947	1,109	87,786,137	100,688,890

**Prices Received Value per Head and Total Value for Hogs – States and United States: December 1, 2010 and 2011**

State	Value per head		Total value	
	2010 (dollars)	2011 (dollars)	2010 (1,000 dollars)	2011 (1,000 dollars)
Alabama .....	110	120	14,300	18,000
Alaska .....	190	190	228	171
Arizona .....	110	120	18,150	21,600
Arkansas .....	110	130	17,600	13,910
California .....	140	160	14,700	16,800
Colorado .....	100	120	73,000	86,400
Connecticut .....	140	160	476	400
Delaware .....	110	120	605	600
Florida .....	110	120	1,650	1,920
Georgia .....	96	110	15,360	17,050
Hawaii .....	140	150	1,750	1,725
Idaho .....	(D)	(D)	(D)	(D)
Illinois .....	100	120	440,000	552,000
Indiana .....	110	120	401,500	462,000
Iowa .....	110	130	2,101,000	2,574,000
Kansas .....	90	110	163,800	207,900
Kentucky .....	79	96	25,675	30,720
Louisiana .....	110	120	1,100	840
Maine .....	110	120	517	600
Maryland .....	110	120	2,860	2,760
Massachusetts .....	110	120	1,210	1,440
Michigan .....	120	130	124,800	135,200
Minnesota .....	130	140	1,001,000	1,092,000
Mississippi .....	110	120	42,350	42,600
Missouri .....	92	110	266,800	302,500
Montana .....	110	120	19,800	21,600
Nebraska .....	110	130	346,500	409,500
Nevada .....	140	160	196	368
New Hampshire .....	120	140	396	406
New Jersey .....	120	140	960	1,260
New Mexico .....	110	120	165	144
New York .....	100	110	10,800	10,010
North Carolina .....	90	100	810,000	880,000
North Dakota .....	110	120	15,730	18,120
Ohio .....	110	120	224,400	255,600
Oklahoma .....	92	110	215,280	251,900
Oregon .....	110	120	1,760	1,560
Pennsylvania .....	98	110	108,780	123,200
Rhode Island .....	110	120	198	228
South Carolina .....	92	100	21,160	21,000
South Dakota .....	120	130	154,800	180,700
Tennessee .....	94	110	15,980	18,700
Texas .....	84	100	56,280	81,000
Utah .....	110	120	81,400	90,000
Vermont .....	140	160	378	576
Virginia .....	86	100	30,530	24,500
Washington .....	(D)	(D)	(D)	(D)
West Virginia .....	110	120	550	600
Wisconsin .....	95	110	32,300	37,400
Wyoming .....	120	140	11,880	14,280
Idaho and Washington .....	113	122	6,870	7,100
United States .....	106	122	6,897,524	8,032,888

(D) Withheld to avoid disclosing data for individual operations.

**Prices Received Value per Head and Total Value for Sheep and Lambs – States and United States: January 1, 2011 and 2012**

State	Sheep and lambs			
	Value per head		Total value	
	2011	2012	2011	2012
	(dollars)	(dollars)	(1,000 dollars)	(1,000 dollars)
Arizona .....	157	175	23,550	24,500
California .....	166	231	99,600	131,670
Colorado .....	163	226	60,310	103,960
Idaho .....	188	251	44,180	60,240
Illinois .....	218	277	12,208	15,789
Indiana .....	227	246	11,350	13,530
Iowa .....	196	242	39,200	47,190
Kansas .....	174	215	12,180	15,050
Kentucky .....	193	201	6,562	8,040
Michigan .....	196	241	14,504	19,039
Minnesota .....	185	227	24,050	34,050
Missouri .....	185	195	14,985	16,185
Montana .....	173	259	39,790	58,275
Nebraska .....	171	229	12,654	17,633
Nevada .....	183	255	12,444	17,850
New England <sup>1</sup> .....	221	226	11,271	10,170
New Mexico .....	136	168	14,960	16,800
New York .....	180	193	12,600	11,966
North Carolina .....	174	190	4,698	4,940
North Dakota .....	180	238	14,040	17,374
Ohio .....	206	246	26,574	30,996
Oklahoma .....	175	238	13,125	16,660
Oregon .....	169	226	36,335	45,200
Pennsylvania .....	195	230	19,110	20,470
South Dakota .....	187	241	49,555	68,685
Tennessee .....	172	181	6,020	6,335
Texas .....	129	153	109,650	99,450
Utah .....	196	276	54,880	84,180
Virginia .....	167	183	15,030	15,372
Washington .....	177	259	9,912	13,468
West Virginia .....	164	219	5,576	7,227
Wisconsin .....	201	224	18,090	18,816
Wyoming .....	171	239	62,415	88,340
Other States <sup>2</sup> .....	140	155	19,600	22,475
United States .....	170	221	931,008	1,182,015

<sup>1</sup> New England includes Connecticut, Maine, Massachusetts, New Hampshire, Rhode Island, and Vermont.

<sup>2</sup> Individual State estimates not available for States not shown, but are included in Other States.

**Prices Received Value per Head and Total Value for Angora Goats – States and United States: January 1, 2011 and 2012**

State	Angora goats			
	Value per head		Total value	
	2011	2012	2011	2012
	(dollars)	(dollars)	(1,000 dollars)	(1,000 dollars)
Arizona .....	75.00	85.00	1,875	1,955
California .....	70.00	70.00	245	245
New Mexico .....	75.00	89.00	863	1,024
Texas .....	100.00	89.00	11,000	7,565
4-State average .....	93.20	87.70	13,983	10,789

**Other Hay Baled Market Year Average Prices Received – Selected Regions: 2007-2009, 2008-2010, and 2009-2011 Averages**

[Prices provided to the Forest Service, United States Department of Agriculture to compute Eastern National Forest grazing fees]

Region	3-year average		
	2007-2009	2008-2010	2009-2011
	(dollars per ton)	(dollars per ton)	(dollars per ton)
Appalachia <sup>1</sup> .....	96.40	92.90	91.80
Corn Belt <sup>2</sup> .....	82.00	73.30	68.60
Florida .....	130.00	138.90	147.10
Lake States <sup>3</sup> .....	88.00	84.00	79.90
Northeast <sup>4</sup> .....	136.80	125.20	118.30
Southeast/Delta <sup>5</sup> .....	83.80	82.40	82.90

<sup>1</sup> Kentucky, North Carolina, Tennessee, Virginia, and West Virginia.

<sup>2</sup> Illinois, Indiana, Missouri, and Ohio.

<sup>3</sup> Michigan, Minnesota, and Wisconsin.

<sup>4</sup> Maine, New Hampshire, New York, Pennsylvania, and Vermont.

<sup>5</sup> Alabama, Arkansas, Georgia, Louisiana, Mississippi, and South Carolina.



## Reliability of Prices Received Estimates

**Definition:** Prices received represent sales from producers to first buyers. They include all grades and qualities. The average commodity price from the survey multiplied by the total quantity marketed theoretically should give the total cash receipts for the commodity.

**Survey procedures:** Primary sales data used to determine grain prices were obtained from probability samples of about 1900 mills and elevators. These procedures ensure that virtually all grain moving into commercial channels has a chance of being included in the survey. Generally, States surveyed account for 90 percent or more of total United States production. Livestock prices are obtained from packers, stockyards, auctions, dealers, and market check data from AMS-USDA, private marketing organizations, and state commodity groups and agencies. Inter-farm sales of grain and livestock are not included since they represent very small percentages of the total marketings. Grain marketed for seed is also excluded. Fruit and vegetable prices are obtained from sample surveys and market check data from AMS-USDA, private marketing organizations, state agencies, and universities.

**Summary and estimation procedures:** Survey quantities sold are expanded by strata to state levels and used to weight average strata prices to a state average. State prices are then weighted to a United States price based on expanded marketings. Recommendations are prepared by the State Field Offices and reviewed by the Agricultural Statistics Board in Washington, D.C. State recommendations are reviewed for reasonableness with survey data, other States, and recent historic estimates.

**Revisions:** For most items, the current month's preliminary price represents a 3-5 day period around the 15th of the month. Previous month's prices represent actual dollars received for quantities sold during the entire month. Revisions are published in monthly issues of Agricultural Prices.

**Reliability:** United States price estimates based on probability surveys generally have a sampling error of less than one percent for the major commodities such as corn, wheat, soybeans, cotton, and rice. Current methods of summarization for non-probability commodities are not designed directly to calculate sampling errors. However, analytical measures approximate the United States relative sampling errors at around five percent. Any nonsampling errors are attributed to such things as the inability to obtain correct information, differences in interpreting questions or definitions, mistakes in coding or processing the data, etc. Efforts are made at each step in the survey process to minimize these nonsampling errors.

## Prices Paid by Farmers

The February Index of Prices Paid for Commodities and Services, Interest, Taxes, and Farm Wage Rates (PPITW) at 209 (1990-1992=100), is up 0.5 percent from January 2012 and 6.1 percent from February 2011.

**Production index:** The February index, at 222, increased 0.5 percent from last month and 7.2 percent from last year. Higher prices in February for feeder cattle, diesel, concentrates, and gasoline offset lower prices for supplements, LP gas, potash & phosphate, and other machinery.

**Feed:** The February index, at 223, increased 0.9 percent from January and 5.2 percent from last February. Since January, higher prices for concentrates more than offset lower prices for supplements.

**Livestock and poultry:** The February index, at 183, increased 2.8 percent from last month and 18 percent from last year. Since January, prices for feeder cattle and feeder pigs were higher. The February feeder cattle price, at \$158.40 per cwt, is up \$4.10 per cwt from the January price. February feeder pigs averaged \$203.00 per cwt, up \$13.00 per cwt from January.

**Fertilizer:** The February index, at 348, is up 0.3 percent from January and 14 percent above February a year ago. Since January, higher prices for mixed fertilizer and nitrogen offset lower prices for potash & phosphate.

**Chemicals:** The February index, at 152, unchanged from January but increased 4.8 percent from last February. Compared with last month, prices have remained the same.

**Fuels:** The February index, at 357, is up 1.4 percent from a month earlier and 6.6 percent above February 2011. Compared with last month, prices are higher for diesel and gasoline but lower for LP gas.

**Machinery:** The February index, at 245, was unchanged from January but increased 2.9 percent above last February. Compared with last month, prices are higher for self-propelled machinery but lower for other machinery.

**Consumer price index:** The January 2012 Consumer Price Index, as issued by the Bureau of Labor Statistics, for all urban consumers (CPI-U) increased 0.4 percent before seasonal adjustment to a level of 226.665 (1982-1984=100). The December index is 225.672. For the 12 month period ending in January, the overall index increased 2.9 percent.

## Prices Paid Indexes and Related Parity Ratios – United States: February 2012 with Comparisons

[Revised historical price indexes for months not shown are available at [www.nass.usda.gov](http://www.nass.usda.gov)]

Indexes and ratios	1910-1914 Base			1990-1992 Base		
	February 2011	January 2012	February 2012	February 2011	January 2012	February 2012
	(percent)	(percent)	(percent)	(percent)	(percent)	(percent)
Prices paid by farmers for commodities, services, interest, taxes, and wage rates (PPITW) .....	2626	2775	2789	197	208	209
Production .....	2005	2141	2154	207	221	222
Feed .....	1035	1080	1088	212	221	223
Livestock and poultry .....	1979	2276	2339	155	178	183
Seeds .....	3082	3327	3327	311	336	336
Fertilizer .....	1116	1273	1274	304	347	348
Chemicals .....	895	938	938	145	152	152
Fuels .....	2589	2714	2755	335	352	357
Supplies and repairs .....	1154	1200	1202	163	169	169
Autos and trucks .....	3053	3109	3129	115	117	118
Machinery .....	5982	6140	6141	238	245	245
Building materials .....	2290	2347	2350	169	173	173
Services and rent .....	2114	2178	2179	(NA)	(NA)	(NA)
Services .....	(NA)	(NA)	(NA)	163	167	167
Rent .....	(NA)	(NA)	(NA)	205	212	212
Interest <sup>1</sup> .....	3381	3635	3635	135	145	145
Taxes <sup>2</sup> .....	5935	6225	6225	222	232	232
Wage rates .....	7301	7205	7205	195	193	193
Production, interest, taxes, and wage rates (PITW) .....	2730	2898	2912	203	216	217
Family living-CPI <sup>3</sup> .....	2102	2153	2162	164	168	169
Ratio (received/paid) .....	(NA)	(NA)	(NA)	87	90	86
Parity ratio <sup>4</sup> .....	41	43	41	(NA)	(NA)	(NA)
Parity ratio adjusted <sup>5</sup> .....	42	44	42	(NA)	(NA)	(NA)
PPITW adjusted for productivity <sup>6</sup> .....	1454	1470	1473	(NA)	(NA)	(NA)
Crop sector (PPITW) .....	(NA)	(NA)	(NA)	207	218	219
Livestock sector (PPITW) .....	(NA)	(NA)	(NA)	188	198	200
Farm sector (production) .....	(NA)	(NA)	(NA)	209	226	229
Non-farm sector (production) .....	(NA)	(NA)	(NA)	206	218	218

(NA) Not available.

<sup>1</sup> Interest per acre on farm real estate debt and interest rate on farm non-real estate debt.

<sup>2</sup> Farm real estate taxes payable per acre.

<sup>3</sup> Bureau of Labor Statistics, Consumer Price Index for all urban consumers (CPI-U), for the previous month converted by the USDA.

<sup>4</sup> Ratio of index of prices received to PPITW (1910-1914=100).

<sup>5</sup> Based on estimated cash receipts, from marketings and government payments, the preliminary adjustment factor is 1.044 for 2012 and the revised factor is 1.041 for 2011.

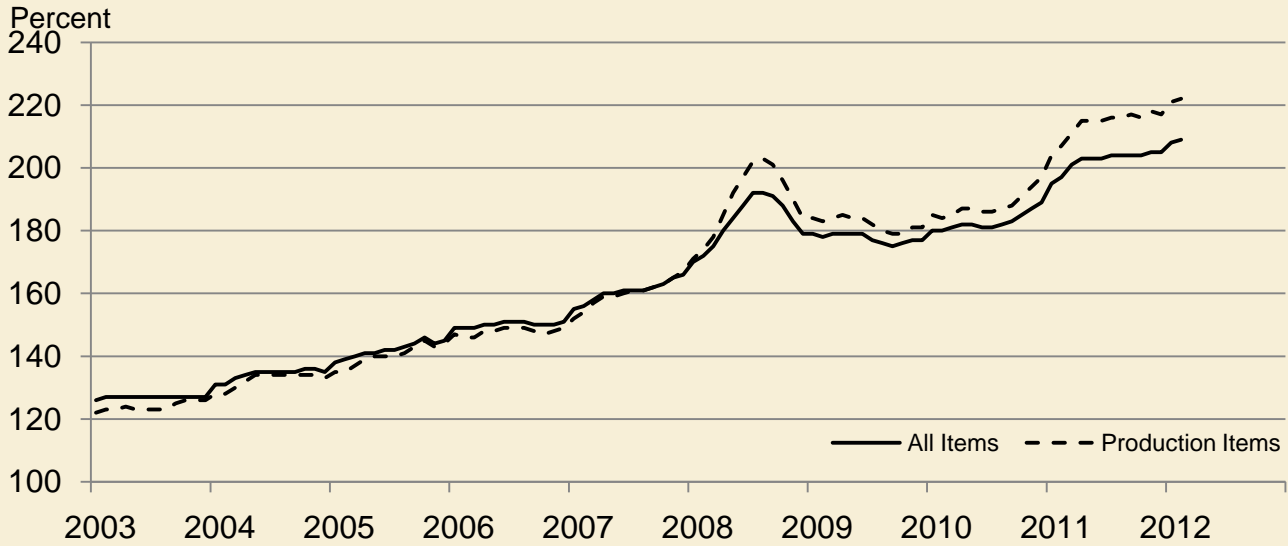
<sup>6</sup> PPITW is adjusted based on productivity trend for the prior 15 years.

## Prices Paid Indexes and Annual Weights for Input Components and Sub-Components – United States: February 2012 with Comparisons

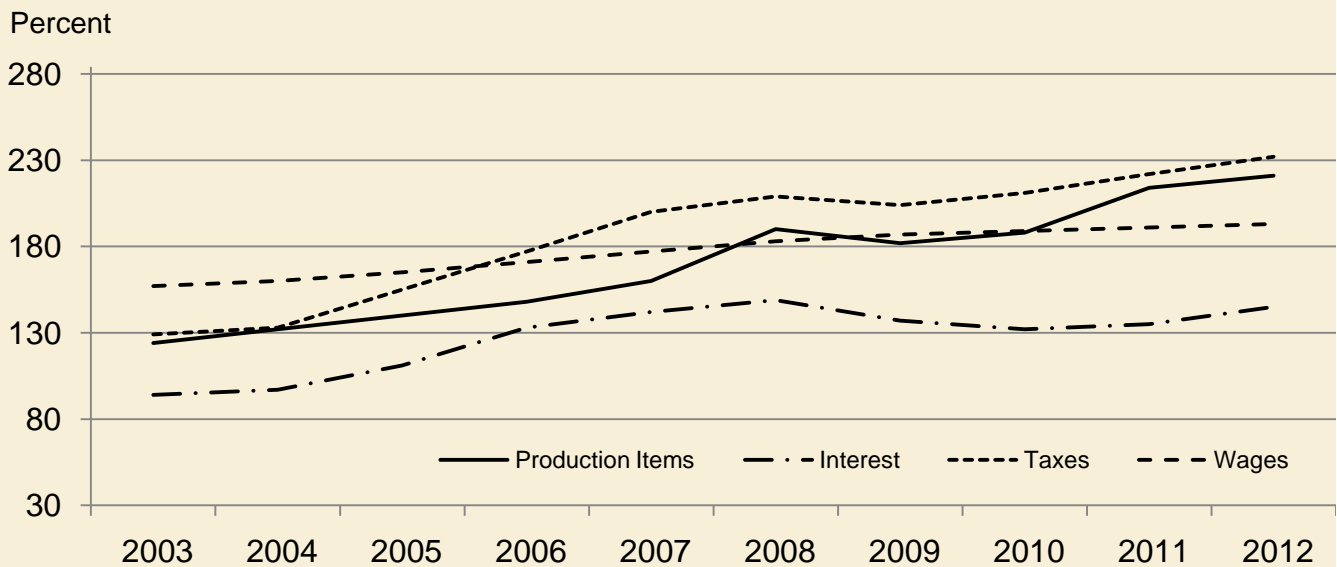
[Revised historical price indexes for months not shown are available at [www.nass.usda.gov](http://www.nass.usda.gov). Relative weights are a five year moving average]

	Relative weights		Indexes (1990-1992=100)		
	2011	2012	February 2011	January 2012	February 2012
	(percent)	(percent)	(percent)	(percent)	(percent)
Production items .....	70.6	71.1	207	221	222
Feed .....	12.2	12.7	212	221	223
Feed grains .....	1.7	1.8	245	261	265
Complete feeds .....	6.0	6.2	212	220	220
Hay and forages .....	1.5	1.6	155	220	227
Concentrates .....	1.9	2.0	214	188	197
Supplements .....	1.0	1.1	238	226	210
Livestock and poultry .....	8.5	8.3	155	178	183
Feeder cattle .....	6.6	6.5	153	182	187
Feeder pigs .....	0.7	0.7	220	207	221
Milk cow replacements .....	0.7	0.7	115	129	129
Poultry .....	0.5	0.5	151	151	151
Seeds .....	4.1	4.3	311	336	336
Field crops .....	3.7	3.9	329	356	356
Grasses and legumes .....	0.4	0.4	139	145	145
Fertilizer .....	5.5	5.7	304	347	348
Mixed fertilizer .....	2.4	2.5	305	327	328
Nitrogen .....	2.3	2.4	286	358	358
Potash and phosphate .....	0.8	0.8	357	380	378
Chemicals .....	3.3	3.2	145	152	152
Herbicides .....	2.1	2.0	130	136	136
Insecticides .....	0.7	0.7	167	175	175
Fungicides and other .....	0.5	0.5	174	183	183
Fuels .....	4.0	4.0	335	352	357
Diesel .....	2.5	2.5	369	395	404
Gasoline .....	0.8	0.8	278	293	306
LP gas .....	0.7	0.7	284	263	245
Supplies and repairs .....	4.6	4.6	163	169	169
Supplies .....	1.5	1.5	158	165	166
Repairs .....	3.0	3.0	165	171	171
Autos and trucks .....	1.4	1.2	115	117	118
Autos .....	0.2	0.2	112	115	115
Trucks .....	1.2	1.1	115	117	118
Machinery .....	4.3	4.3	238	245	245
Tractors .....	0.9	0.9	202	206	206
Self-propelled .....	1.7	1.7	249	254	255
Other machinery .....	1.6	1.6	248	257	257
Building materials .....	4.4	4.2	169	173	173
Services .....	12.1	12.0	163	167	167
Custom rates .....	1.2	1.2	148	148	148
Other services .....	10.9	10.7	164	169	169
Rent .....	6.3	6.6	205	212	212
Cash .....	3.4	3.5	262	270	270
Share .....	2.9	3.0	139	145	145
Interest .....	3.5	3.4	135	145	145
Taxes .....	3.1	3.1	222	232	232
Wage rates .....	7.4	7.2	195	193	193
Family living-CPI .....	15.4	15.3	164	168	169

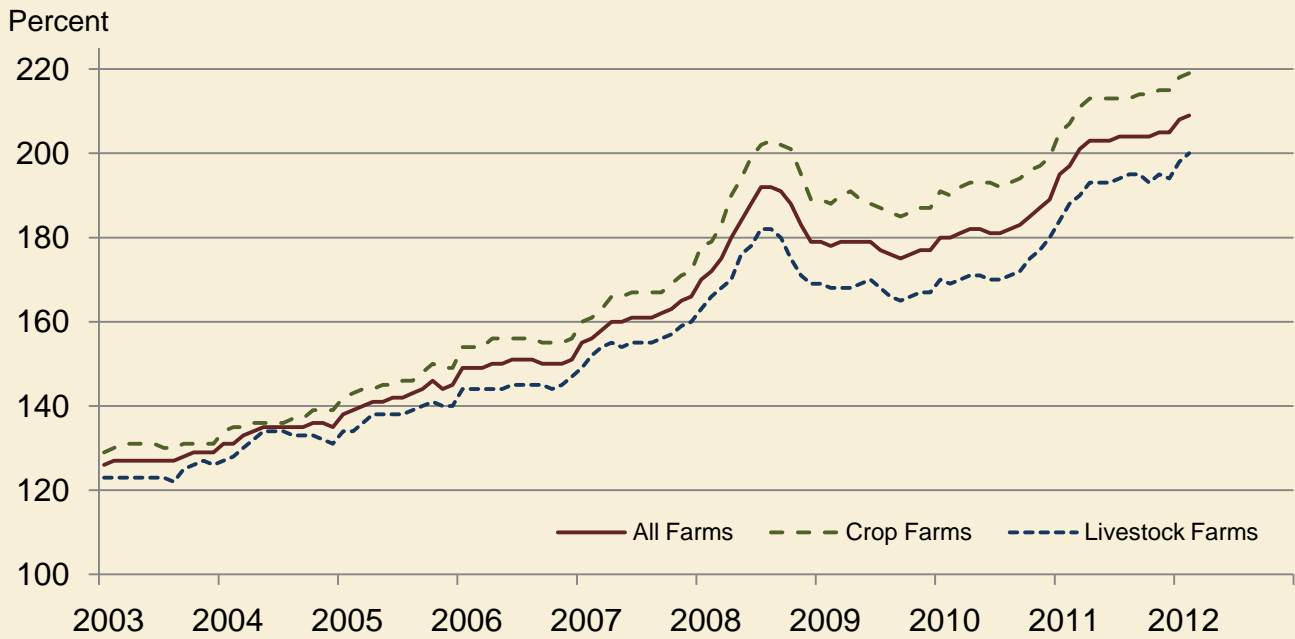
## Paid Indexes by Month, All Items and Production Items – United States: 1990-1992=100



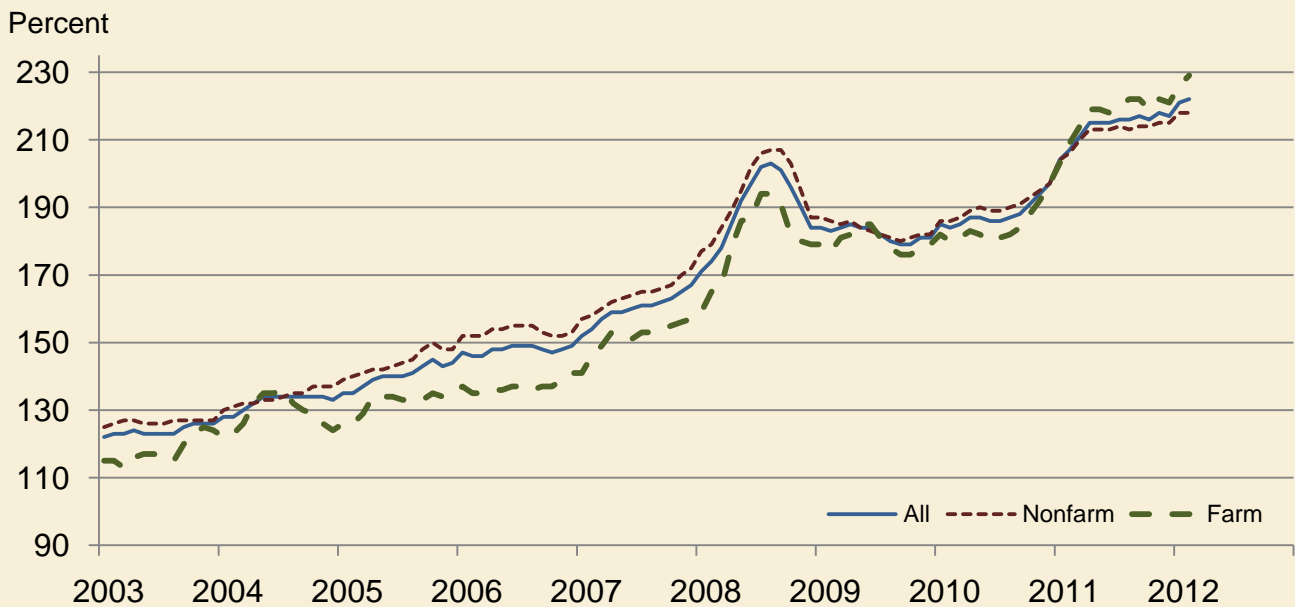
## Paid Indexes, Annual Averages, Production Items, Interest, Taxes, and Wages – United States: 1990-1992=100



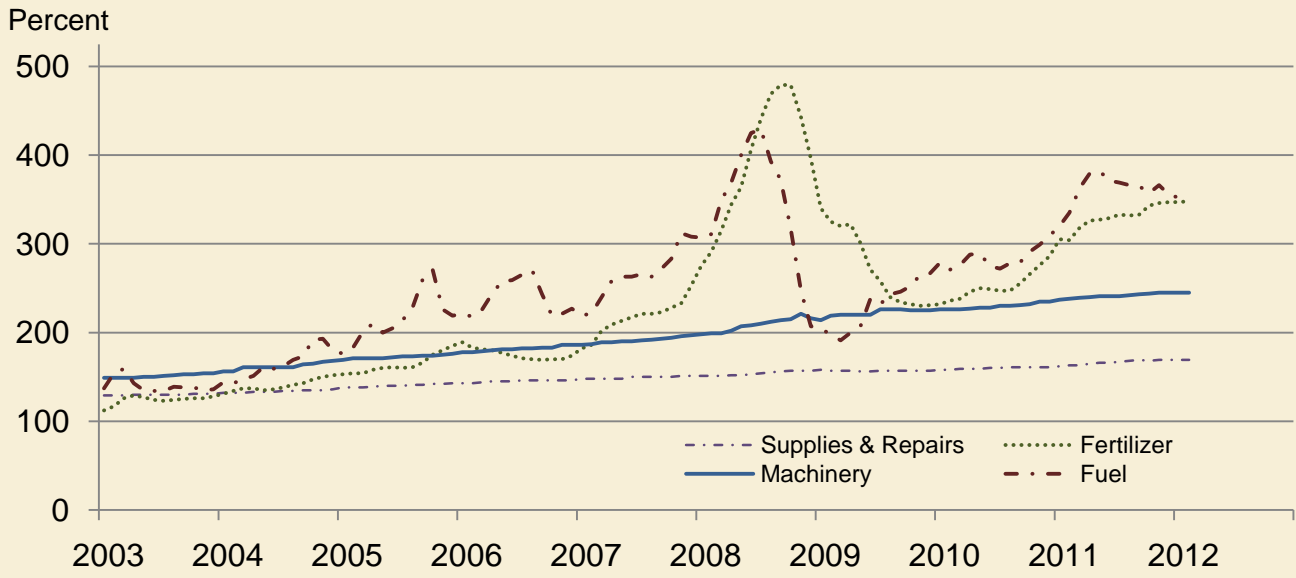
## Paid Indexes by Farm Type and Month, All Items – United States: 1990-1992=100



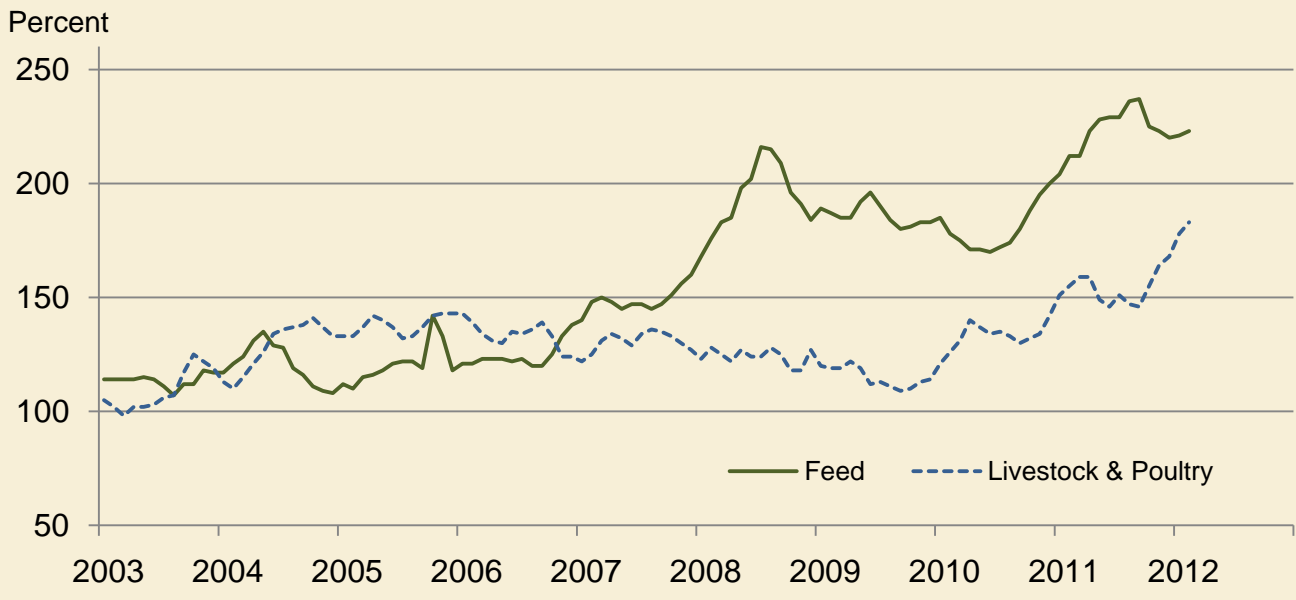
## Paid Indexes by Origin and Month, All Production Items – United States: 1990-1992=100



### Paid Indexes by Non-Farm Sector and Month, Supplies & Repairs, Fertilizer, Machinery, and Fuel – United States: 1990-1992=100



### Paid Indexes by Month, Feed and Livestock & Poultry – United States: 1990-1992=100



## Feed Price Ratios – United States: February 2012 with Comparisons

Feed price ratio <sup>1</sup>	February 2011	January 2012	Preliminary February 2012
Broiler-feed: pounds of broiler grower feed equal in value to 1 pound of broiler, live weight <sup>2</sup> .....	3.0	3.4	3.5
Market egg feed: pounds of laying feed equal in value to 1 dozen eggs <sup>3</sup> .....	6.0	5.1	5.0
Hog-corn: bushels of corn equal in value to 100 pounds of hog, live weight .....	10.9	10.5	10.6
Milk-feed: pounds of 16% mixed dairy feed equal in value to 1 pound of whole milk <sup>4</sup> .....	2.01	1.72	1.58
Steer and heifer-corn: bushels of corn equal in value to 100 pounds of steer & heifers, live weight .....	19.6	21.4	21.1
Turkey-feed: pounds of turkey grower equal in value to 1 pound of turkey, live weight <sup>5</sup> .....	4.2	4.9	4.6

<sup>1</sup> Effective January 1995, prices of commercial prepared feeds are based on current United States prices received for corn, soybeans, alfalfa hay, and all wheat.

<sup>2</sup> The price of commercial prepared broiler feed is based on current United States prices received for corn and soybeans. The modeled feed uses 58 percent corn and 42 percent soybeans.

<sup>3</sup> The price of commercial prepared layer feed is based on current United States prices received for corn and soybeans. The modeled feed uses 75 percent corn and 25 percent soybeans.

<sup>4</sup> The price of commercial prepared dairy feed is based on current United States prices received for corn, soybeans, and alfalfa hay. The modeled feed uses 51 percent corn, 41 percent alfalfa hay, and 8 percent soybeans.

<sup>5</sup> The price of commercial prepared turkey feed is based on current United States prices received for corn, soybeans, and wheat. The modeled feed uses 51 percent corn, 28 percent soybeans, and 21 percent wheat.

## Prices Received Used to Calculate Feed Price Ratios – United States: February 2012 with Comparisons

[Price data source for livestock and poultry commodities is United States Department of Agriculture's Agricultural Marketing Service]

Item	February 2011	January 2012	Preliminary February 2012
	(dollars)	(dollars)	(dollars)
Broilers, live .....pound	0.440	0.490	0.520
Eggs, market .....dozen	0.776	0.667	0.669
Hogs, all .....cwt	61.40	63.50	65.50
Milk, all .....cwt	19.10	19.00	17.90
Steers and heifers .....cwt	111.00	130.00	130.00
Turkeys, live .....pound	0.578	0.657	0.639
Corn .....bushel	5.65	6.07	6.16
Hay, alfalfa .....ton	129.00	192.00	198.00
Soybeans .....bushel	12.70	11.90	12.30
Wheat, all .....bushel	7.42	7.04	7.09

## Prices Paid for Feeder Livestock – United States: February 2012 with Comparisons

[Price data source is United States Department of Agriculture's Agricultural Marketing Service]

Item	February 2011	January 2012	Preliminary February 2012
	(dollars)	(dollars)	(dollars)
Feeder cattle and calves .....cwt	129.10	154.30	158.40
Feeder pigs .....cwt	202.00	190.00	203.00



## Reliability of Prices Paid Estimates

**Definition:** Prices paid by farmers represent the average costs of inputs purchased by farmers and ranchers to produce agricultural commodities. Conceptually, the average price when multiplied by quantity purchased should equal total producer expenditures for the item.

**Survey procedures:** The prices paid data are obtained from establishments that sell goods and services to farmers and ranchers. Annually, about 8,500 firms are randomly selected from lists by type of item sold with an average response rate in the range of 75-80 percent. Firms are asked to report the price for the specified item "most commonly bought by farmers" or that was the "volume seller". Approximately 135 items are surveyed each March to represent all production input items purchased. The survey reference period for most items is the five business days centered around the 15th of the month. Separate prices paid surveys are conducted for agricultural chemicals, fuels, feed, fertilizer, machinery, and seed.

**Summary and estimation procedures:** The annual March Prices Paid Survey is summarized as a nonprobability survey. Average prices reported are aggregated to the region and United States level using weights available from expenditure data and other administrative sources. Price recommendations are prepared by the State Field Offices and Headquarters for review by the Agricultural Statistics Board in Washington, D.C. Also, the change in price level for individual items surveyed are combined to the regional and United States levels, and are published as prices paid indexes referenced to a specific base period. Prices paid indexes for new autos and trucks, building materials, farm supplies, motor supplies, and marketing containers are updated based on price changes measured in selected Bureau of Labor Statistics (BLS) indexes.

**Revisions:** Any revisions are published in the monthly and in annual issues of Agricultural Prices. The basis for revision must be supported by additional data that directly affect the level of the estimate. More revisions are likely for March when separate prices paid surveys are conducted, in lieu of BLS indexes, by the USDA to measure price change.

**Reliability:** Current methods of summarization for the March data are not designed directly to calculate sampling errors. However, analytical measures approximate the United States relative sampling errors for major items around 10 percent. Any nonsampling errors are attributed to such things as the inability to obtain correct information, differences in interpreting questions or definitions, mistakes in coding or processing the data, etc. Efforts are made at each step in the survey process to minimize these nonsampling errors.

**Program change:** Effective January 1, 1995, the National Agricultural Statistics Service updated the weights and changed the construction of its prices paid and received by farmers indexes. A Federal Register Notice dated October 28, 1994 discussed these program modifications.

A 1990-1992 reference and base period replaced the 1977 reference and 1971-1973 base weight period. Five-year moving average weights replaced the current fixed 1971-1973 base period weights. The 1910-1914=100 price indexes, required by statute for computing parity prices, were linked forward based on the changes in the new 1990-1992=100 indexes. The new indexes were constructed by multiplying the ratios of the current prices to the base period prices by the moving average weights (adjusted for seasonal marketing patterns for the prices received indexes).

## Information Contacts

Direct general questions to Kevin Hintzman, Acting Chief, Environmental, Economics and Demographics Branch at (202) 720-6146. Below are the commodity specialists to contact for additional information.

### Crop Prices Received

Lance Honig, Chief, Crops Branch .....	(202) 720-2127
Jacqueline Moore, Head, Field Crops Section .....	(202) 720-2127
Suzanne Avilla – Peanuts, Rice.....	(202) 720-7688
Bryan Durham – Oats, Rye, Wheat.....	(202) 720-8068
Steve Maliszewski – Cotton, Cotton Ginnings, Sorghum.....	(202) 720-5944
Anthony Prillaman – Corn, Proso Millet, Flaxseed .....	(202) 720-9526
Julie Schmidt – Crop Weather, Barley, Hay .....	(202) 720-7621
Travis Thorson – Soybeans, Sunflower, Other Oilseeds.....	(202) 720-7369
Jorge Garcia-Pratts, Head, Fruits, Vegetables and Special Crops Section.....	(202) 720-2127
Debbie Flippin – Fresh and Processing Vegetables, Onions, Strawberries.....	(202) 720-2157
Fred Granja – Apples, Apricots, Cherries, Plums, Prunes, Tobacco .....	(202) 720-4288
Erika White – Floriculture, Maple Syrup, Nursery, Tree Nuts .....	(202) 720-4215
Chris Hawthorn – Citrus, Coffee, Sugar Crops, Grapes, Tropical Fruits.....	(202) 720-5412
Daphne Schauber – Berries, Cranberries, Potatoes, Sweet Potatoes .....	(202) 720-4285
Dan Norris – Austrian Winter Peas, Dry Edible Peas, Lentils, Mints, Mushrooms, Peaches, Pears, Wrinkled Seed Peas, Dry Beans .....	(202) 720-3250

### Livestock Prices Received

Dan Kerestes, Chief, Livestock Branch .....	(202) 720-3570
Scott Hollis, Head, Livestock Section.....	(202) 720-3570
Travis Averill - Cattle .....	(202) 720-3040
Mike Miller - Milk, Milk Cows .....	(202) 720-3278
Doug Bounds - Hogs.....	(202) 720-3106
Bruce Boess, Head, Poultry and Specialty Commodities Section.....	(202) 720-3570
Cody Brokmeyer – Honey, Turkeys .....	(202) 690-3237
Kim Linonis - Eggs.....	(202) 690-8632
Miste Salmon - Broilers .....	(202) 720-3244

### Indexes, Prices Paid, and Parity Prices

Kevin Hintzman, Acting Chief, Environmental, Economics and Demographics Branch.....	(202) 720-6146
Kevin Hintzman, Head, Economics Section .....	(202) 720-6146
Daryl Brinkman - Prices Received Indexes, Parity Prices.....	(202) 720-8844
Scott Shimmin - Grazing Fees .....	(202) 690-3231
Vincent Davis - Prices Paid Indexes, Prices Paid for Feed, Fertilizer, Agricultural Chemicals, Seeds, Farm Supplies and Repairs, Farm Machinery, Fuels, Feeder Livestock, Poultry Chicks, Feed Price Ratios, Autos & Trucks.....	(202) 690-3229

## Access to NASS Reports

For your convenience, you may access NASS reports and products the following ways:

- All reports are available electronically, at no cost, on the NASS web site: <http://www.nass.usda.gov>
- Both national and state specific reports are available via a free e-mail subscription. To set-up this free subscription, visit <http://www.nass.usda.gov> and in the “Follow NASS” box under “Receive reports by Email,” click on “National” or “State” to select the reports you would like to receive.
- Printed reports may be purchased from the National Technical Information Service (NTIS) by calling toll-free (800) 999-6779, or (703) 605-6220 if calling from outside the United States or Canada. Accepted methods of payment are Visa, MasterCard, check, or money order.

For more information on NASS surveys and reports, call the NASS Agricultural Statistics Hotline at (800) 727-9540, 7:30 a.m. to 4:00 p.m. ET, or e-mail: [nass@nass.usda.gov](mailto:nass@nass.usda.gov).

The United States Department of Agriculture (USDA) prohibits discrimination in all its programs and activities on the basis of race, color, national origin, age, disability, and where applicable, sex, marital status, familial status, parental status, religion, sexual orientation, political beliefs, genetic information, reprisal, or because all or a part of an individual's income is derived from any public assistance program. (Not all prohibited bases apply to all programs.) Persons with disabilities who require alternative means for communication of program information (Braille, large print, audiotape, etc.) should contact USDA's TARGET Center at (202) 720-2600 (voice and TDD).

To file a complaint of discrimination, write to USDA, Assistant Secretary for Civil Rights, Office of the Assistant Secretary for Civil Rights, 1400 Independence Avenue, S.W., Stop 9410, Washington, DC 20250-9410, or call toll-free at (866) 632-9992 (English) or (800) 877-8339 (TDD) or (866) 377-8642 (English Federal-relay) or (800) 845-6136 (Spanish Federal-relay). USDA is an equal opportunity provider and employer.