



Agricultural Prices

ISSN: 1937-4216

Released July 31, 2012, by the National Agricultural Statistics Service (NASS), Agricultural Statistics Board, United States Department of Agriculture (USDA).

Special Note

Parity Price data on pages 37 through 54 are included as more recent price data for fruits became available with the re-instatement of the program following the January 2012 *Agricultural Price Report*. Revised February through June parity price data will be posted to the on-line Quick Stats database.

July Farm Prices Received Index Advanced 11 Points

The preliminary All Farm Products Index of Prices Received by Farmers in July, at 193 percent, based on 1990-1992=100, increased 11 points (6.0 percent) from June. The Crop Index is up 20 points (9.4 percent) but the Livestock Index decreased 1 point (0.7 percent). Producers received higher prices for corn, wheat, soybeans, and hogs and lower prices for cattle, grapes, broilers, and broccoli. In addition to prices, the overall index is also affected by the seasonal change based on a 3-year average mix of commodities producers sell. Increased monthly movement of wheat, grapes, grain sorghum, and hay offset the decreased marketing of milk, potatoes, cantaloupes, and corn.

The preliminary All Farm Products Index is up 10 points (5.5 percent) from July 2011. The Food Commodities Index, at 178, increased 7 points (4.1 percent) from last month and increased 3 points (1.7 percent) from July 2011.

Prices Paid Index Up 1 Point

The July Index of Prices Paid for Commodities and Services, Interest, Taxes, and Farm Wage Rates (PPITW) is 215 percent of the 1990-1992 average. The index is up 1 point (0.5 percent) from June and 11 points (5.4 percent) above July 2011. Higher prices in July for feed grains, concentrates, nitrogen, and LP gas offset lower prices for feeder cattle, feeder pigs, diesel, and potash & phosphate.

Prices Received, Prices Paid, and Ratio of Prices Received to Prices Paid Indexes 1990-1992 Base – United States: July 2012 with Comparisons

Index	July	June	July
	2011	2012	2012
Prices received by farmers	183	182	193
Prices paid by farmers	204	214	215
Ratio of prices received to prices paid	90	85	90

+Contents

Prices Received by Farmers	4
Prices Received Indexes – United States: July 2012 with Comparisons.....	5
Prices Received and Prices Paid Indexes by Month for Selected Groups – United States: 2011 and 2012, 1990-1992 Base	5
Received and Paid Indexes, Annual Average – United States: 1990-1992=100 Chart	6
Crop Farm Received and Paid Indexes, All Items by Quarter – United States: 1990-1992=100 Chart	7
Livestock Farm Received and Paid Indexes All Items by Quarter – United States: 1990-1992=100 Chart	7
Received Indexes by Month, Livestock Products, All Products, and All Crops – United States: 1990-1992=100 Chart	8
Received Indexes by Month, Food Grains, Feed Grains & Hay, and Oilseeds – United States: 1990-1992=100 Chart	8
Received Indexes by Month, Fruit & Nut and Commercial Vegetables – United States: 1990-1992=100 Chart	9
Received Indexes by Month, Meat Animal, Dairy Product, and Poultry & Egg – United States: 1990-1992=100 Chart	9
Prices Received for Field Crops and Fruits – United States: July 2012 with Comparisons.....	10
Prices Received for Vegetables and Livestock – United States: July 2012 with Comparisons	11
Prices Received for Corn by Month – United States Chart	12
Prices Received for Wheat by Month – United States Chart	12
Prices Received for Upland Cotton by Month – United States Chart	13
Prices Received for Soybeans by Month – United States Chart	13
Prices Received for Cattle by Month – United States Chart	14
Prices Received for Milk by Month – United States Chart	14
Prices Received for Hogs by Month – United States Chart	15
Prices Received for Poultry by Month – United States Chart	15
Prices Received for All Wheat, Corn, and Soybeans by Month – United States: 2012 with Comparisons	16
Prices Received for Beef Cattle and All Hogs by Month – United States: 2012 with Comparisons	16
Prices Received for All Wheat – States and United States: July 2012 with Comparisons	17
Prices Received for Winter Wheat – States and United States: July 2012 with Comparisons	17
Prices Received for Durum Wheat – States and United States: July 2012 with Comparisons	18
Prices Received for Spring Wheat – States and United States: July 2012 with Comparisons	18
Prices Received for All Barley – States and United States: July 2012 with Comparisons	19
Prices Received for Malting Barley – States: July 2012 with Comparisons	19
Prices Received for Feed Barley – States: July 2012 with Comparisons	19
Prices Received for Corn – States and United States: July 2012 with Comparisons	20
Prices Received for Soybeans – States and United States: July 2012 with Comparisons	20
Prices Received for Oats – States and United States: July 2012 with Comparisons	21
Prices Received for Sorghum Grain – States and United States: July 2012 with Comparisons	21
Prices Received for Dry Beans – States and United States: July 2012 with Comparisons	22
Prices Received for Peanuts (In-Shell) – States and United States: July 2012 with Comparisons	22
Prices Received for Sunflower – States and United States: July 2012 with Comparisons	23
Prices Received for Canola – States and United States: July 2012 with Comparisons	23
Prices Received for Flaxseed – States and United States: July 2012 with Comparisons	23
Prices Received for Upland Cotton and Cottonseed – States and United States: July 2012 with Comparisons	24
Prices Received and Farm Marketings for Upland Cotton and Rice – United States: July 2012 with Comparisons	24
Prices Received for Hay by Type – States and United States: July 2012 with Comparisons	25
Prices Received for Apples – States and United States: July 2012 with Comparisons	25
Prices Received for Citrus Fruits by Utilization – States and United States: July 2011	26
Prices Received for Citrus Fruits by Utilization – States and United States: June 2012	27

Prices Received for Citrus Fruits by Utilization – States and United States: July 2012	28
Prices Received for Potatoes – States and United States: July 2012 with Comparisons	29
Prices Received for All Milk – States and United States: July 2012 with Comparisons	30
Prices Received for Milk Cows – States and United States: July 2012 with Comparisons	31
Commodity Parity Prices and Price as Percent of Parity Price – United States: July 2012 with Comparisons.....	32
Commodity Parity Prices – United States: July 2012 with Comparisons	33
Marketing Year for Specified Commodities	35
Prices Received for Sugar Crops, Market Year Average and Value of Production – United States: 2011	35
Seasonal Adjustment Factors for All Eggs and All Milk	36
Parity Prices	37
Prices Received For Average Base Period – United States: January 1910-December 1914	38
Parity Ratio	39
Prices Received Adjusted Base Prices and Parity Prices – United States: January 2012	40
Prices Received Calendar Year Average Prices and Index used to Calculate Agricultural Commodity Parity Prices – United States: 2002-2011.....	45
Prices Received Indexes as a Percent of 1990-1992 Base, Monthly and Annual Average – United States: 2008-2012	55
Prices Received Indexes as a Percent of 1910-1914 Base, Monthly and Annual Average – United States: 2008-2012	57
Reliability of Prices Received Estimates	59
Prices Paid by Farmers	60
Prices Paid Indexes and Related Parity Ratios – United States: July 2012 with Comparisons	61
Prices Paid Indexes and Annual Weights for Input Components and Sub-Components – United States: July 2012 with Comparisons	62
Paid Indexes by Month, All Items and Production Items – United States: 1990-1992=100 Chart	63
Paid Indexes, Annual Averages, Production Items, Interest, Taxes, and Wages – United States: 1990-1992=100 Chart	63
Paid Indexes by Farm Type and Month, All Items – United States: 1990-1991=100 Chart	64
Paid Indexes by Origin and Month, All Production Items – United States: 1990-1992=100 Chart	64
Paid Indexes by Non-Farm Sector and Month, Supplies & Repairs, Fertilizer, Machinery, and Fuel – United States: 1990-1992=100 Chart	65
Paid Indexes by Month, Feed and Replacement Livestock – United States: 1990-1992=100 Chart	65
Feed Price Ratios – United States: July 2012 with Comparisons	66
Prices Received Used to Calculate Feed Price Ratios – United States: July 2012 with Comparisons	66
Prices Paid for Feeder Livestock – United States: July 2012 with Comparisons	66
Prices Paid Indexes as a Percent of 1990-1992 Base, Monthly and Annual Average – United States: 2008-2012	67
Prices Paid Index Sub-Components as a Percent of 1990-1992 Base, Monthly and Annual Average – United States: 2008-2012	71
Prices Paid Indexes as a Percent of 1910-1914 Base, Monthly and Annual Average – United States: 2008-2012	75
Reliability of Prices Paid Estimates	78
Information Contacts	79

Prices Received by Farmers

The July All Farm Products Index is 193 percent of its 1990-1992 base, up 6.0 percent from the June index and 5.5 percent above the July 2011 index.

All crops: The July index, at 233, increased 9.4 percent from June and is 10 percent above July 2011. Index increases for feed grains & hay, food grains, and oilseeds more than offset the index decreases for fruits & nuts, commercial vegetables, and potatoes & dry beans.

Food grains: The July index, at 275, is 23 percent above the previous month and 17 percent above a year ago. The July price for all wheat, at \$8.31 per bushel, is up \$1.61 from June and \$1.21 above July 2011.

Feed grains & hay: The July index, at 302, is up 12 percent from last month and 15 percent above a year ago. The corn price, at \$7.36 per bushel, is up 99 cents from last month and is \$1.03 above July 2011. The all hay price, at \$184 per ton, is up \$1.00 from June and up \$14.00 from last July. Sorghum grain, at \$12.00 per cwt, is \$2.44 above June and up \$1.60 from July last year.

Cotton, Upland: The July index, at 126, is down 1.6 percent from June and 7.4 percent below last year. The July price, at 76.6 cents per pound, is down 0.7 cent from the previous month and 5.9 cents below last July.

Oilseeds: The July index, at 278, is up 12 percent from June and 17 percent higher than July 2011. The soybean price, at \$15.60 per bushel, increased \$1.70 from June and is \$2.40 above July 2011.

Fruits & nuts: The July index, at 156, is down 14 percent from June and 16 percent lower than a year ago. The price decreases for peaches and oranges more than offset the price increases for pears and apples.

Commercial vegetables: The July index, at 150, is down 6.2 percent from last month and 8.0 percent below July 2011. Price declines for tomatoes, broccoli, and lettuce more than offset price increases during July for snap beans, onions, and celery.

Potatoes & dry beans: The July index, at 179, is down 0.6 percent from last month and 23 percent below July 2011. The all potato price, at \$9.76 per cwt, is down 17 cents from June and \$4.43 lower than last July. The all dry bean price, at \$43.80 per cwt, is down 40 cents from the previous month but \$9.60 higher than July 2011.

Livestock and products: The July index, at 151, is 0.7 percent below last month and down 2.6 percent from July 2011. Compared with a year ago, prices are higher for cattle, broilers, eggs, hogs, turkeys, and calves. The price for milk is lower than last year.

Meat animals: The July index, at 158, is down 2.5 percent from last month but 3.9 percent higher than last year. The July hog price, at \$73.80 per cwt, is up \$3.60 from June and \$2.10 higher than a year ago. The July beef cattle price of \$116 per cwt is down \$5.00 from last month but \$5.00 higher than July 2011.

Dairy products: The July index, at 127, is up 2.4 percent from a month ago but 24 percent lower than July last year. The July all milk price of \$16.60 per cwt is up 40 cents from last month but down \$5.20 from July 2011.

Poultry & eggs: The July index, at 159, is down 1.9 percent from June but 6.0 percent above a year ago. The July market egg price, at 76.3 cents per dozen, increased 7.5 cents from June and is 7.9 cents above July 2011. The July broiler price, at 49.0 cents per pound, is down 2.0 cents from June but 2.0 cents above a year ago. The July turkey price, at 72.4 cents per pound, is down 1.5 cents from the previous month but up 4.9 cents from a year earlier.

Prices Received Indexes – United States: July 2012 with Comparisons

[Revised historical price indexes for months not shown are available at www.nass.usda.gov]

Index	1910-1914 Base				1990-1992 Base		
	1990-1992 Average	July 2011	June 2012	July 2012	July 2011	June 2012	July 2012
	(percent)	(percent)	(percent)	(percent)	(percent)	(percent)	(percent)
All products	639	1162	1157	1226	183	182	193
All crops	500	1048	1058	1156	211	213	233
Food grains	325	747	710	871	236	224	275
Feed grains & hay	363	934	958	1076	262	269	302
Cotton, Upland	517	698	654	648	136	128	126
Tobacco	1263	1491	1559	1559	99	103	103
Oilseeds	554	1299	1364	1523	237	249	278
Fruits & nuts	716	1291	1268	1086	185	182	156
Commercial vegetables	698	1162	1141	1073	163	160	150
Potatoes & dry beans	540	1178	914	908	232	180	179
Other crops	493	643	650	650	131	132	132
Livestock and products	768	1186	1166	1158	155	152	151
Meat animals	1021	1543	1648	1610	152	162	158
Dairy products	799	1341	997	1021	167	124	127
Poultry & eggs	282	421	454	445	150	162	159
Food commodities	(NA)	(NA)	(NA)	(NA)	175	171	178

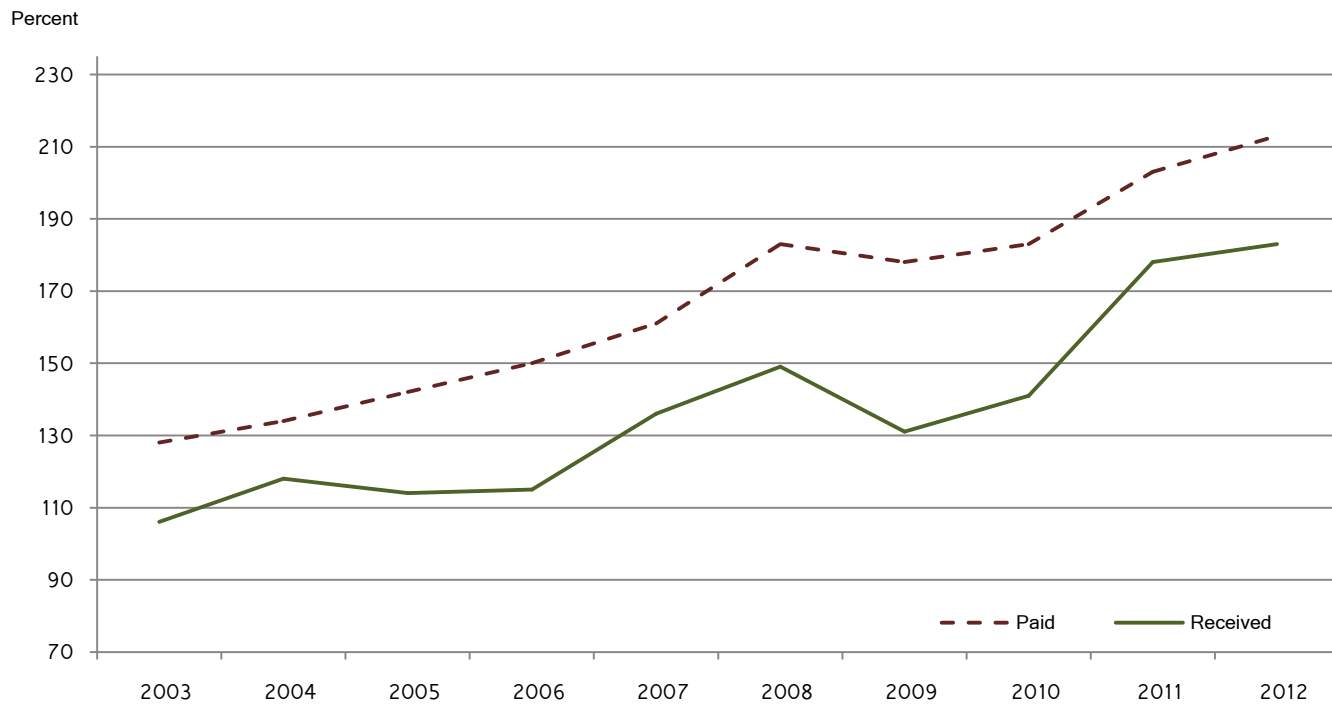
(NA) Not available.

Prices Received and Prices Paid Indexes by Month for Selected Groups – United States: 2011 and 2012, 1990-1992 Base

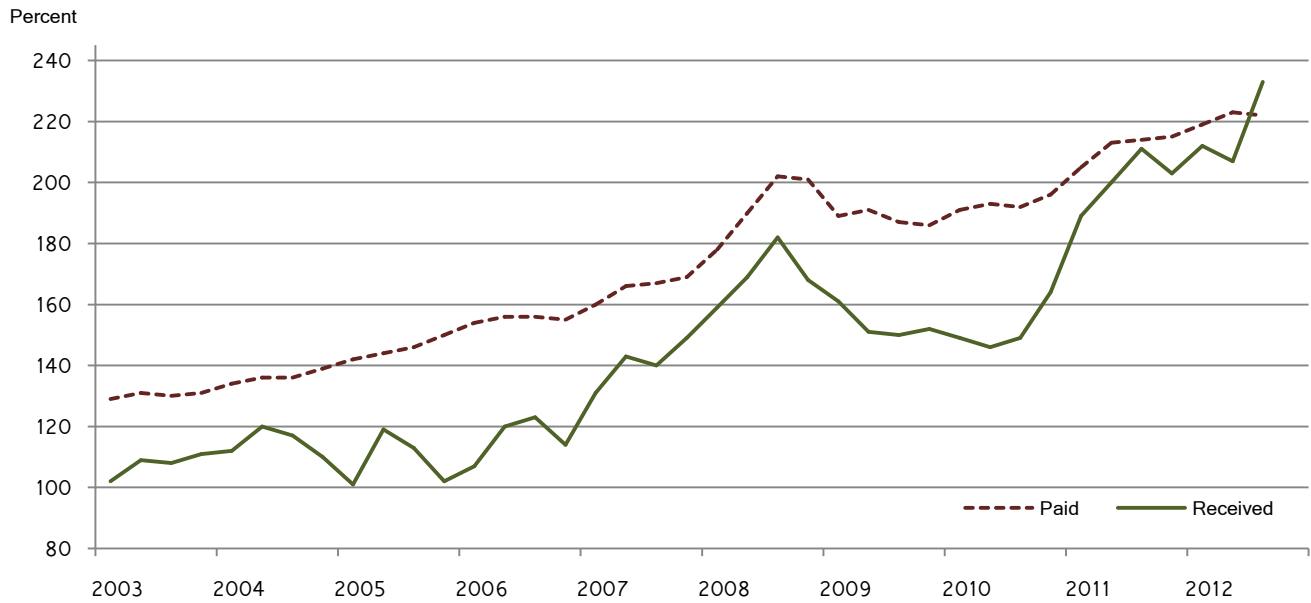
[Revised historical price indexes for months not shown are available at www.nass.usda.gov. Blank data cells indicate estimation period has not yet begun]

Month	Index of prices received						Index of prices paid			
	All farm products		All crops		Livestock and products		All items		Production items	
	2011	2012	2011	2012	2011	2012	2011	2012	2011	2012
	(percent)	(percent)	(percent)	(percent)	(percent)	(percent)	(percent)	(percent)	(percent)	(percent)
January	166	188	189	212	137	156	195	210	204	222
February	171	181	200	206	144	158	197	211	207	223
March	173	184	197	210	152	160	201	213	212	226
April	176	178	200	207	156	152	203	215	215	228
May	178	178	208	209	152	151	204	215	216	229
June	180	182	210	213	153	152	203	214	215	228
July	183	193	211	233	155	151	204	215	216	229
August	184		211		158		205		217	
September	180		203		152		205		218	
October	184		203		154		205		217	
November	184		206		157		206		219	
December	179		198		157		206		218	

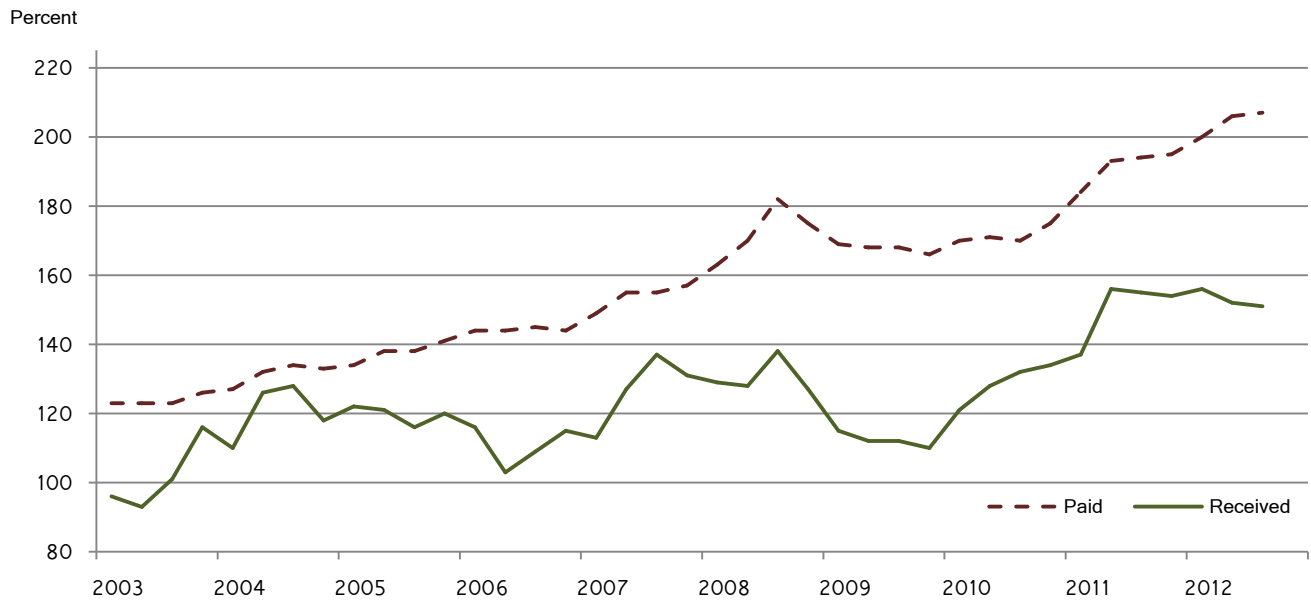
**Received and Paid Indexes, Annual Average –
United States: 1990–1992=100**



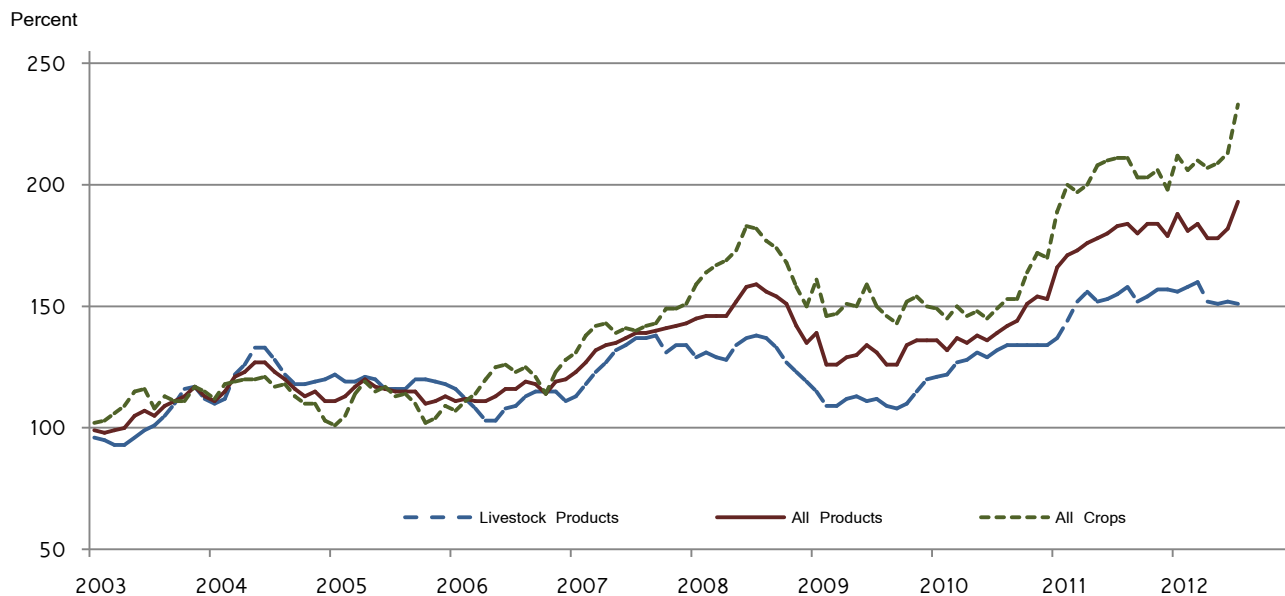
**Crop Farm Received and Paid Indexes,
All Items by Quarter –
United States: 1990–1992=100**



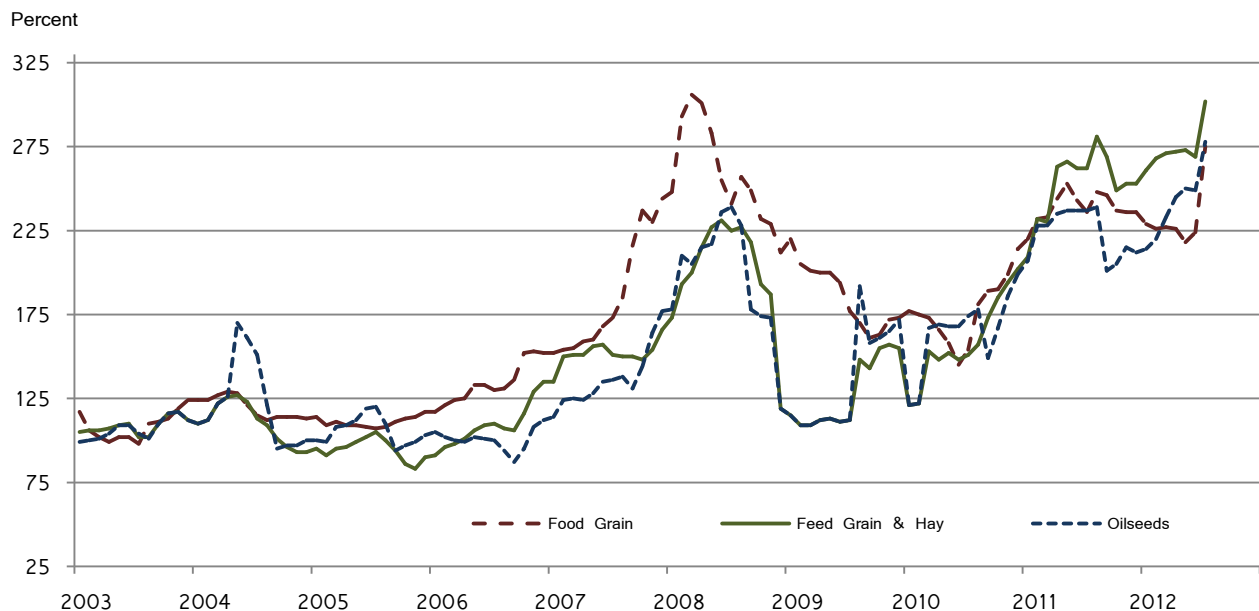
**Livestock Farm Received and Paid Indexes,
All Items by Quarter –
United States: 1990–1992=100**



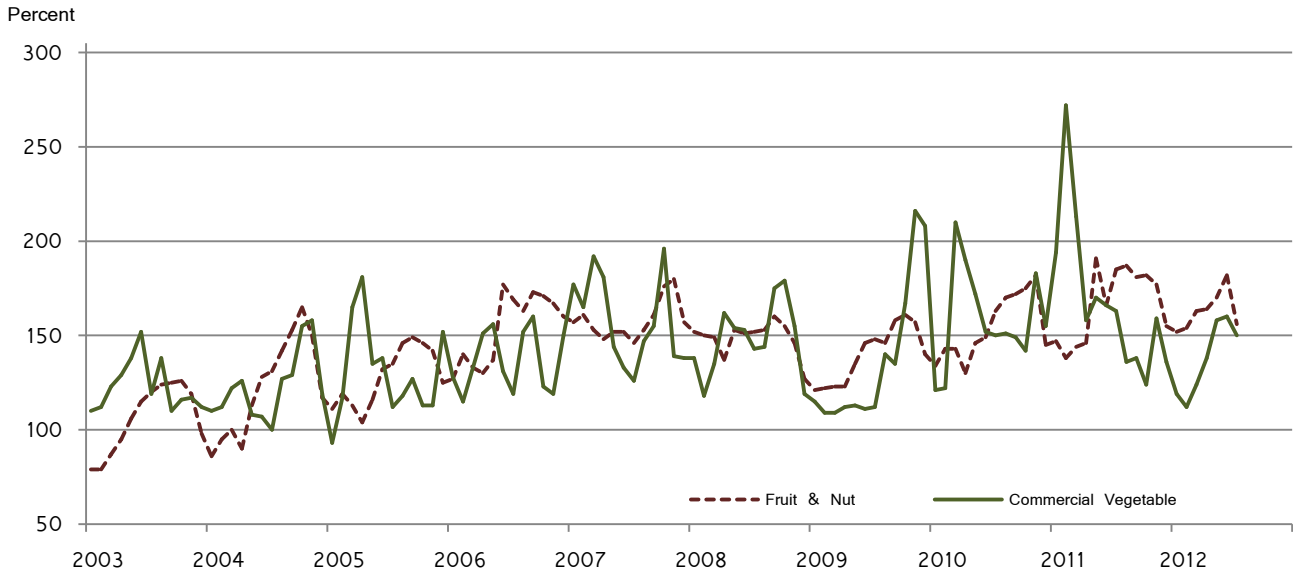
**Received Indexes by Month,
Livestock Products, All Products, and All Crops –
United States: 1990–1992=100**



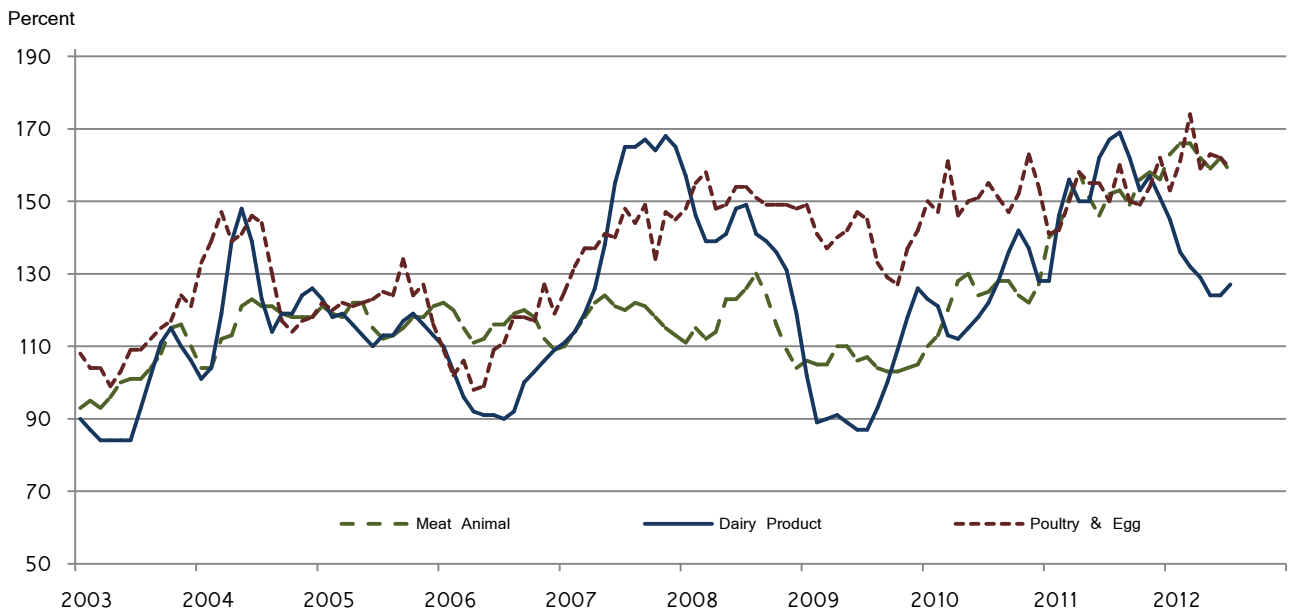
**Received Indexes by Month,
Food Grains, Feed Grains & Hay, and Oilseeds –
United States: 1990–1992=100**



**Received Indexes by Month,
Fruit & Nut and Commercial Vegetables –
United States: 1990–1992=100**



**Received Indexes by Month,
Meat Animal, Dairy Product, and Poultry & Egg –
United States: 1990–1992=100**



Prices Received for Field Crops and Fruits – United States: July 2012 with Comparisons

Commodity	Average 1990-1992	July 2011	June 2012	Preliminary July 2012
Field crops				
Austrian winter peas dollars/cwt	(NA)	(S)	(S)	(S)
Barley, all dollars/bushel	2.12	5.07	5.50	5.66
Feed dollars/bushel	1.90	5.04	5.38	5.05
Malting dollars/bushel	2.43	5.09	5.54	5.87
Beans, dry edible dollars/cwt	19.10	34.20	44.20	43.80
Canola dollars/cwt	(NA)	24.30	27.40	26.50
Chickpeas, all dollars/cwt	(NA)	38.80	41.10	(S)
Large dollars/cwt	(NA)	44.10	44.50	(D)
Small dollars/cwt	(NA)	20.00	(D)	(D)
Corn dollars/bushel	2.30	6.33	6.37	7.36
Cotton, Upland dollars/pound	0.606	0.825	0.773	0.766
Cottonseed ¹ dollars/ton	96.00	(NA)	(NA)	(NA)
Flaxseed dollars/bushel	4.27	15.40	12.90	13.20
Hay, all, baled dollars/ton	76.30	170.00	183.00	184.00
Alfalfa dollars/ton	77.20	189.00	201.00	198.00
Other dollars/ton	60.00	119.00	133.00	143.00
Lentils dollars/cwt	(NA)	27.30	21.10	18.90
Oats dollars/bushel	1.22	3.35	3.77	3.81
Peanuts, in-shell dollars/pound	0.304	0.239	0.344	0.353
Peas, dry edible dollars/cwt	(NA)	13.30	16.50	14.80
Potatoes dollars/cwt	5.82	14.19	9.93	9.76
Rice, all dollars/cwt	7.07	12.90	14.10	14.20
Long dollars/cwt	(NA)	11.40	13.40	13.70
Medium and short dollars/cwt	(NA)	19.00	15.70	17.30
Sorghum grain dollars/cwt	3.75	10.40	9.56	12.00
Soybeans dollars/bushel	5.61	13.20	13.90	15.60
Sunflowers, all dollars/cwt	9.50	30.40	27.30	25.50
Wheat, all dollars/bushel	2.96	7.10	6.70	8.31
Winter dollars/bushel	2.93	6.77	6.54	8.26
Durum dollars/bushel	2.86	10.20	8.31	8.62
Other spring dollars/bushel	3.11	8.45	7.78	8.68
Hard red winter ² dollars/bushel	(NA)	6.96	6.52	(NA)
Soft red winter ² dollars/bushel	(NA)	6.50	6.59	(NA)
Hard red spring ² dollars/bushel	(NA)	8.49	7.81	(NA)
White ² dollars/bushel	3.24	6.72	6.61	(NA)
Fruits				
Citrus, equivalent on-tree				
Grapefruit dollars/box	5.77	8.20	15.43	13.23
Lemons dollars/box	10.10	16.16	15.77	15.97
Oranges dollars/box	5.79	7.74	11.89	9.85
Tangelos dollars/box	5.82	(NA)	(NA)	(NA)
Tangerines and mandarins dollars/box	15.11	(NA)	(D)	(S)
Noncitrus, fresh				
Apples ³ dollars/pound	0.212	0.358	0.384	0.419
Grapes ³ dollars/ton	506.00	1,480.00	1,410.00	(NA)
Peaches ³ dollars/ton	432.00	666.00	886.00	749.00
Pears ³ dollars/ton	370.00	561.00	596.00	620.00
Strawberries dollars/cwt	56.00	89.20	74.40	74.40

(D) Withheld to avoid disclosing data for individual operations.

(NA) Not available.

(S) Insufficient number of reports to establish an estimate.

¹ Marketing year August - February.

² Preliminary estimates not set for this item.

³ Equivalent packinghouse-door returns for California, Michigan, New York (apples only), and Washington (apples, peaches, and pears). Prices as sold for other states.

Prices Received for Vegetables and Livestock – United States: July 2012 with Comparisons

[Price data source for livestock and poultry commodities is United States Department of Agriculture's Agricultural Marketing Service]

Commodity	Average 1990-1992	July 2011	June 2012	Preliminary July 2012
Vegetables, fresh ¹				
Asparagusdollars/cwt	79.80	(S)	97.30	(S)
Beans, snap ²dollars/cwt	(NA)	73.50	32.60	110.00
Broccolidollars/cwt	22.50	28.70	45.90	29.40
Cantaloupes ²dollars/cwt	(NA)	25.00	23.50	18.60
Carrotsdollars/cwt	13.20	28.40	27.50	28.60
Cauliflowerdollars/cwt	26.80	38.40	38.90	26.60
Celerydollars/cwt	11.60	20.00	13.50	25.00
Corn, sweetdollars/cwt	15.70	32.90	23.30	24.00
Cucumbers ²dollars/cwt	(NA)	25.50	23.40	19.70
Lettucedollars/cwt	11.90	19.40	19.00	17.30
Onions ³dollars/cwt	12.80	19.00	17.10	21.20
Tomatoesdollars/cwt	32.30	33.10	45.10	30.60
Livestock				
Calvesdollars/cwt	94.30	138.00	166.00	152.00
Cattle, all beefdollars/cwt	72.90	111.00	121.00	116.00
Cows ⁴dollars/cwt	49.60	73.60	86.00	84.60
Steers and heifersdollars/cwt	77.10	115.00	124.00	119.00
Milk cows ⁵dollars/head	1130.00	1480.00	(NA)	1420.00
Hogs, alldollars/cwt	47.70	71.70	70.20	73.80
Barrows and giltsdollars/cwt	48.40	72.40	71.00	74.70
Sowsdollars/cwt	39.50	55.80	51.80	51.20
Dairy and poultry				
Milk, all ⁶dollars/cwt	13.06	21.80	16.20	16.60
Fat test percent	3.66	3.56	3.59	3.56
Broilers, live ⁷dollars/pound	0.317	0.470	0.510	0.490
Eggs, all ⁸dollars/dozen	0.643	0.880	0.910	0.973
Market ^{8 9}dollars/dozen	0.546	0.684	0.688	0.763
Turkeys, live ^{8 10 11}dollars/pound	0.380	0.675	0.739	0.724
Adjusted for seasonal variation				
Eggs, alldollars/dozen	0.545	1.010	1.120	1.110
Seasonal factor percent	100	87	82	88
Milk, all ⁶dollars/cwt	9.71	22.00	16.70	16.70
Seasonal factor percent	100	99	97	100

(NA) Not available.

(S) Insufficient number of reports to establish an estimate.

¹ Beginning January 2006, point of first sale. FOB shipping point for prior years.

² Monthly estimates began January 1995.

³ Includes some processing.

⁴ Beef cows and cull dairy cows sold for slaughter.

⁵ Animals sold for dairy herd replacement only. Prices available for January, April, July, and October.

⁶ Before deductions for hauling. Includes quality, quantity, and other premiums. Excludes hauling subsidies.

⁷ Live weight equivalent price.

⁸ Mid-month price.

⁹ Also referred to as table eggs.

¹⁰ Live weight equivalent price is used when actual live weight price is not available.

¹¹ Beginning January 2011, price reflects FOB shipping point basis. Prior year price reflects delivered basis.

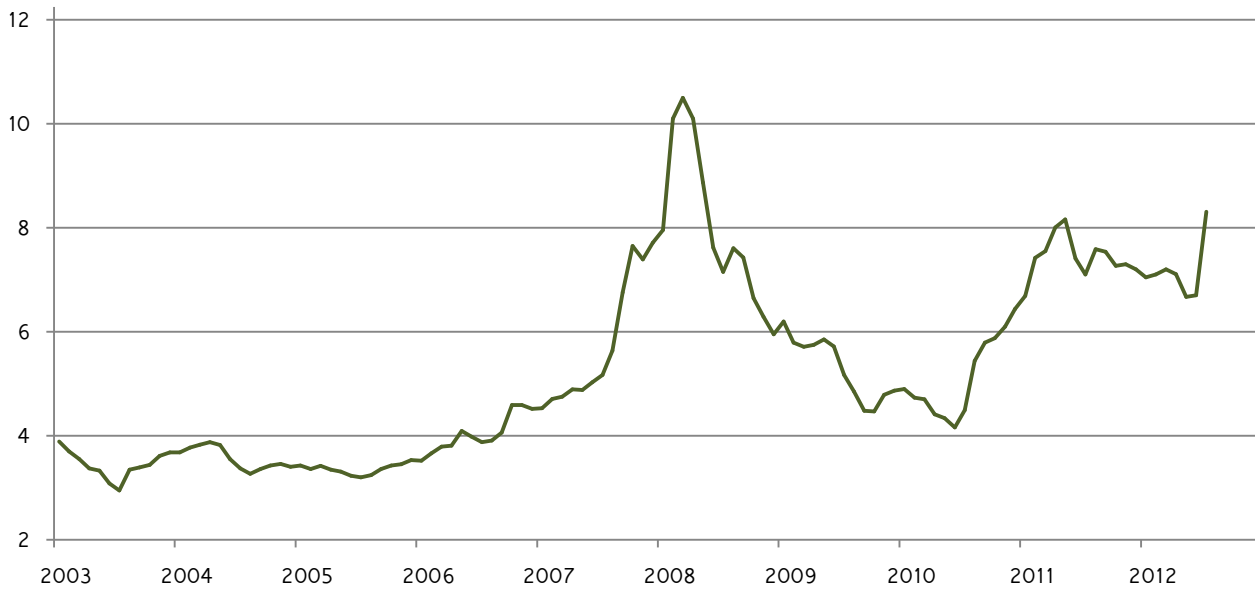
Prices Received for Corn by Month – United States

Dollars per bushel



Prices Received for Wheat by Month – United States

Dollars per bushel



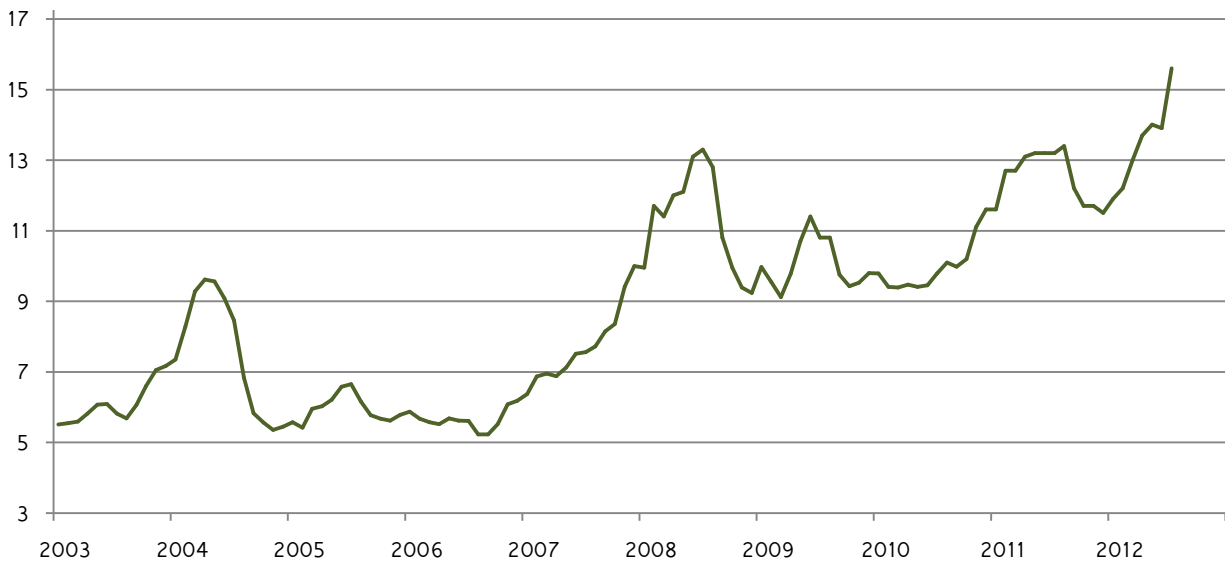
Prices Received for Upland Cotton by Month – United States

Dollars per pound



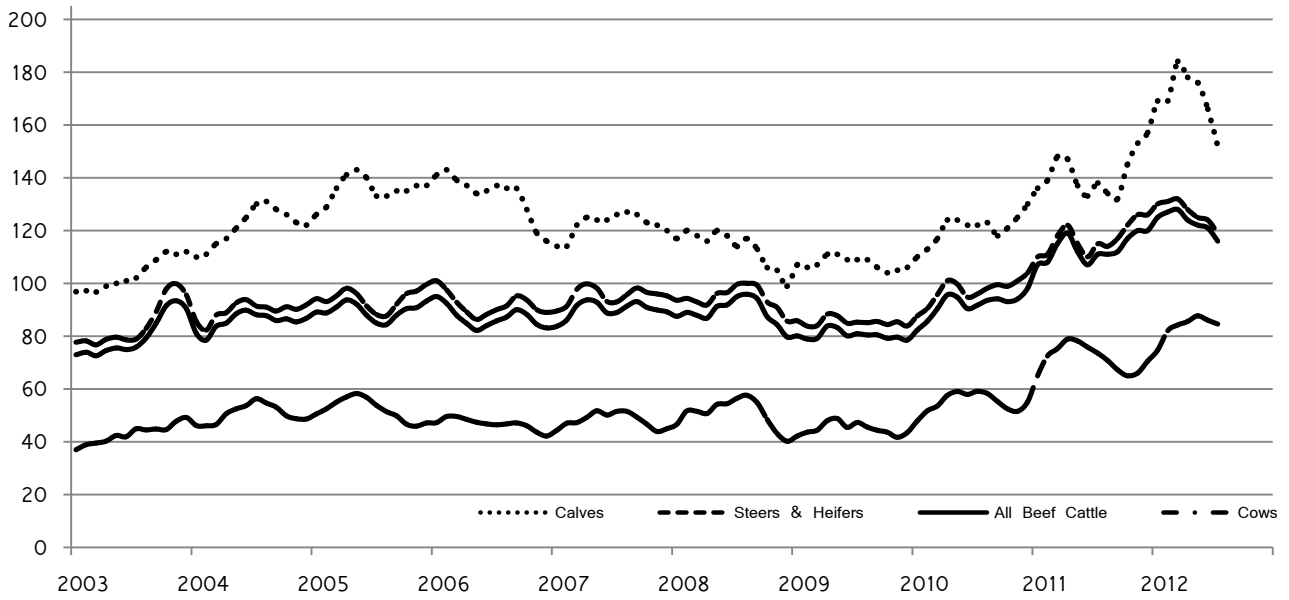
Prices Received for Soybeans by Month – United States

Dollars per bushel



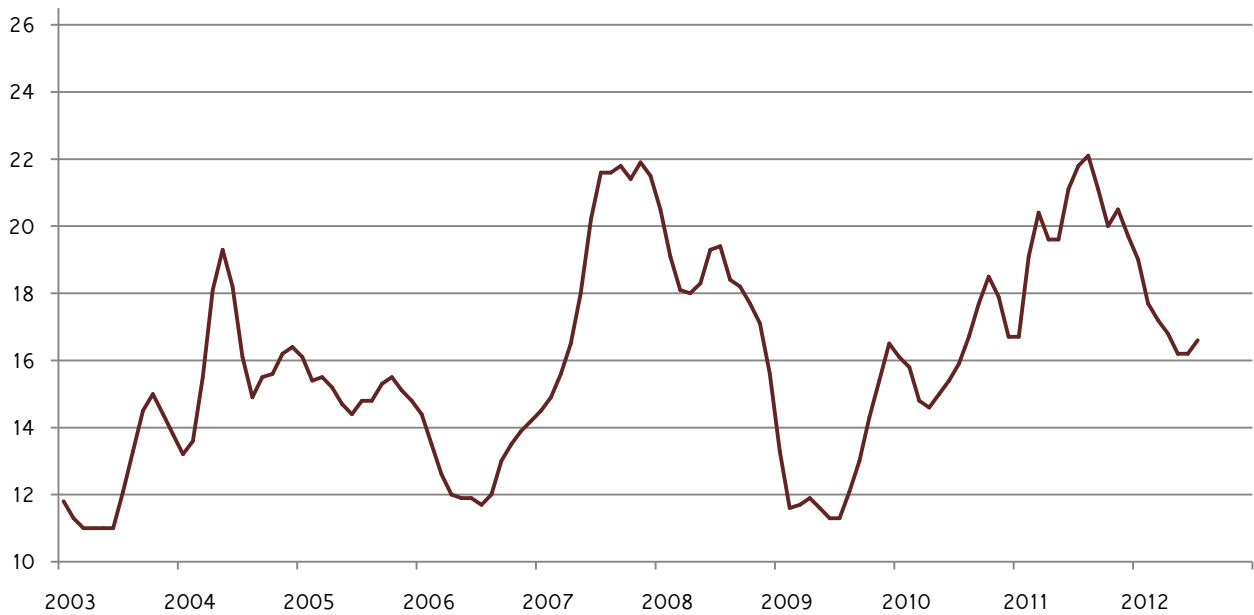
Prices Received for Cattle by Month – United States

Dollars per cwt



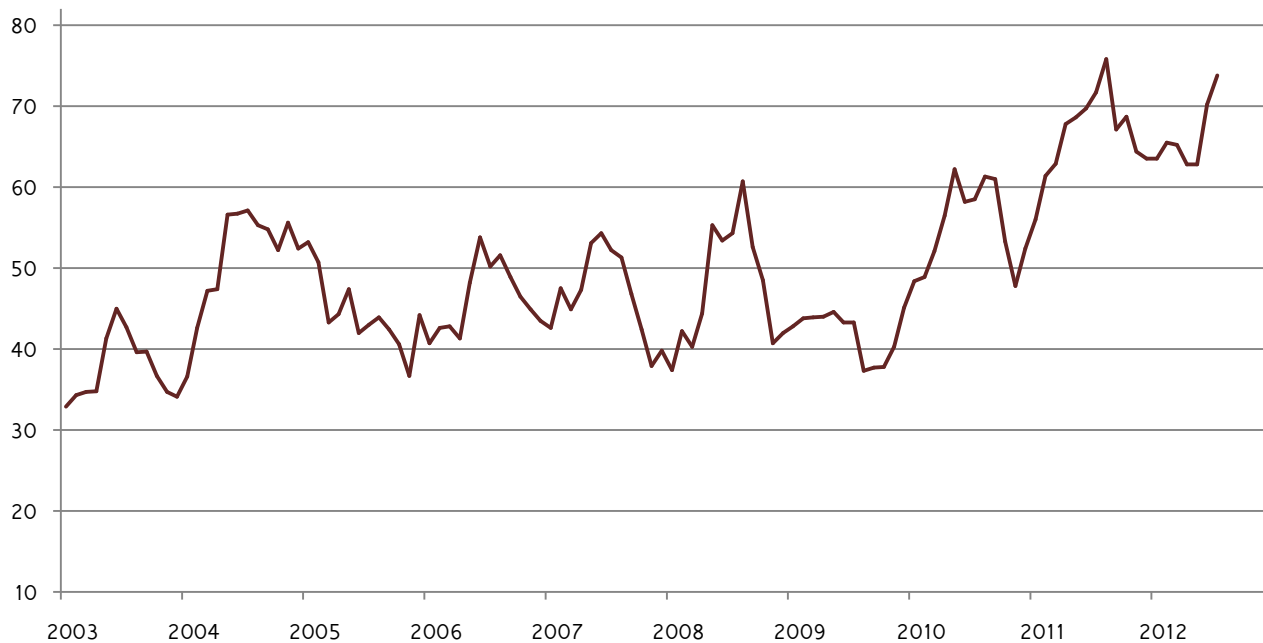
Prices Received for Milk by Month – United States

Dollars per cwt



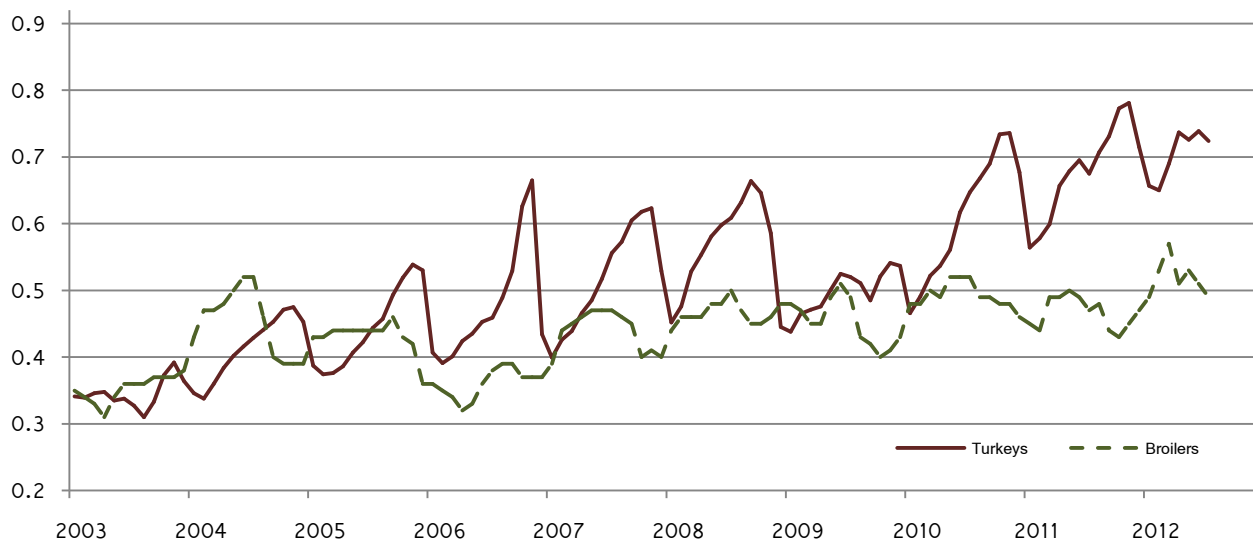
Prices Received for Hogs by Month – United States

Dollars per cwt



Prices Received for Poultry by Month – United States

Dollars per pound



Prices Received for All Wheat, Corn, and Soybeans by Month – United States: 2012 with Comparisons

[Current month prices are mid-month; prices for previous months and years are for the entire month. Blank data cells indicate estimation period has not yet begun]

Month	All wheat			Corn			Soybeans		
	2010	2011	Preliminary 2012	2010	2011	Preliminary 2012	2010	2011	Preliminary 2012
	(dollars per bushel)	(dollars per bushel)	(dollars per bushel)	(dollars per bushel)	(dollars per bushel)	(dollars per bushel)	(dollars per bushel)	(dollars per bushel)	(dollars per bushel)
January	4.90	6.69	7.05	3.66	4.94	6.07	9.79	11.60	11.90
February	4.73	7.42	7.10	3.55	5.65	6.28	9.41	12.70	12.20
March	4.70	7.55	7.20	3.55	5.53	6.35	9.39	12.70	13.00
April	4.41	8.01	7.11	3.41	6.36	6.34	9.47	13.10	13.70
May	4.34	8.16	6.67	3.48	6.32	6.33	9.41	13.20	14.00
June	4.16	7.41	6.70	3.41	6.38	6.37	9.45	13.20	13.90
July	4.49	7.10	8.31	3.49	6.33	7.36	9.79	13.20	15.60
August	5.44	7.59		3.65	6.88		10.10	13.40	
September ...	5.79	7.54		4.08	6.37		9.98	12.20	
October	5.88	7.27		4.32	5.71		10.20	11.70	
November	6.10	7.30		4.55	5.84		11.10	11.70	
December	6.44	7.20		4.82	5.86		11.60	11.50	

Prices Received for Beef Cattle and All Hogs by Month – United States: 2012 with Comparisons

[Current month prices are mid-month; prices for previous months and years are for the entire month. Blank data cells indicate estimation period has not yet begun]

Month	Beef cattle ¹			All hogs ²		
	2010	2011	Preliminary 2012	2010	2011	Preliminary 2012
	(dollars per cwt)	(dollars per cwt)	(dollars per cwt)	(dollars per cwt)	(dollars per cwt)	(dollars per cwt)
January	82.30	107.00	125.00	48.40	56.00	63.50
February	85.70	108.00	127.00	48.90	61.40	65.50
March	90.40	115.00	128.00	52.10	62.90	65.20
April	95.60	119.00	124.00	56.50	67.80	62.80
May	94.70	112.00	122.00	62.20	68.60	62.80
June	90.40	107.00	121.00	58.20	69.70	70.20
July	91.70	111.00	116.00	58.50	71.70	73.80
August	93.50	111.00		61.30	75.80	
September	94.10	112.00		61.00	67.10	
October	93.10	117.00		53.30	68.70	
November	94.00	120.00		47.80	64.40	
December	98.10	120.00		52.40	63.50	

¹ Cows and steers & heifers.

² Barrows & gilts and sows.

Prices Received for All Wheat – States and United States: July 2012 with Comparisons

State	July 2011	June 2012	Preliminary July 2012
	(dollars per bushel)	(dollars per bushel)	(dollars per bushel)
Arizona	8.62	9.33	(D)
Arkansas	6.99	6.67	8.26
California	(D)	7.73	(D)
Colorado	6.64	6.65	8.00
Idaho	6.78	7.11	8.28
Illinois	6.46	6.47	8.40
Indiana	6.51	6.62	8.45
Kansas	6.97	6.47	8.20
Michigan	6.65	6.64	8.50
Minnesota	7.53	7.74	8.59
Missouri	6.45	6.29	8.20
Montana	8.12	7.14	8.41
Nebraska	6.86	6.70	8.00
North Carolina	6.97	6.44	8.10
North Dakota	9.45	7.58	8.33
Ohio	6.48	7.02	8.90
Oklahoma	7.22	6.48	8.30
Oregon	6.69	6.66	8.28
South Dakota	7.81	7.29	8.53
Texas	7.52	6.63	8.31
Washington	6.26	6.91	8.48
United States	7.10	6.70	8.31

(D) Withheld to avoid disclosing data for individual operations.

Prices Received for Winter Wheat – States and United States: July 2012 with Comparisons

State	July 2011	June 2012	Preliminary July 2012
	(dollars per bushel)	(dollars per bushel)	(dollars per bushel)
Arkansas	6.99	6.67	8.26
California	(D)	7.11	(D)
Colorado	6.64	6.65	8.00
Idaho	6.87	6.71	8.00
Illinois	6.46	6.47	8.40
Indiana	6.51	6.62	8.45
Kansas	6.97	6.47	8.20
Michigan	6.65	6.64	8.50
Minnesota	7.06	(D)	7.90
Missouri	6.45	6.29	8.20
Montana	6.87	6.53	7.89
Nebraska	6.86	6.70	8.00
North Carolina	6.97	6.44	8.10
North Dakota	6.84	6.00	7.50
Ohio	6.48	7.02	8.90
Oklahoma	7.22	6.48	8.30
Oregon	6.62	6.63	8.20
South Dakota	7.23	6.47	8.00
Texas	7.52	6.63	8.31
Washington	6.09	6.63	8.21
United States	6.77	6.54	8.26

(D) Withheld to avoid disclosing data for individual operations.

Prices Received for Durum Wheat – States and United States: July 2012 with Comparisons

State	July 2011	June 2012	Preliminary July 2012
	(dollars per bushel)	(dollars per bushel)	(dollars per bushel)
Arizona	8.62	9.33	(D)
California	(S)	(D)	(D)
Idaho	8.21	(D)	(S)
Montana	9.95	7.60	8.14
North Dakota	11.60	7.16	7.70
United States	10.20	8.31	8.62

(D) Withheld to avoid disclosing data for individual operations.

(S) Insufficient number of reports to establish an estimate.

Prices Received for Spring Wheat – States and United States: July 2012 with Comparisons

State	July 2011	June 2012	Preliminary July 2012
	(dollars per bushel)	(dollars per bushel)	(dollars per bushel)
Colorado	(S)	(D)	(D)
Idaho	6.53	7.53	8.50
Minnesota	7.54	7.74	8.60
Montana	8.43	7.90	9.09
North Dakota	8.60	7.78	8.50
Oregon	7.21	6.88	8.70
South Dakota	9.31	7.86	8.90
Washington	7.28	7.83	9.23
United States	8.45	7.78	8.68

(D) Withheld to avoid disclosing data for individual operations.

(S) Insufficient number of reports to establish an estimate.

Prices Received for All Barley – States and United States: July 2012 with Comparisons

State	July 2011	June 2012	Preliminary July 2012
	(dollars per bushel)	(dollars per bushel)	(dollars per bushel)
California	5.88	(D)	(D)
Colorado	(D)	6.48	(S)
Idaho	5.08	5.13	5.65
Minnesota	4.90	(D)	(D)
Montana	4.72	5.77	4.88
North Dakota	5.14	5.65	5.90
Oregon	4.37	4.40	5.00
Utah	(D)	5.15	(D)
Washington	4.96	4.89	(D)
Wyoming	(D)	(S)	(S)
United States	5.07	5.50	5.66

(D) Withheld to avoid disclosing data for individual operations.

(S) Insufficient number of reports to establish an estimate.

Prices Received for Malting Barley – States: July 2012 with Comparisons

State	July 2011	June 2012	Preliminary July 2012
	(dollars per bushel)	(dollars per bushel)	(dollars per bushel)
Idaho	5.00	5.16	(D)
Minnesota	(D)	(D)	(D)
Montana	4.80	5.80	(D)
North Dakota	5.16	5.72	6.20
Wyoming	(D)	(S)	(S)

(D) Withheld to avoid disclosing data for individual operations.

(S) Insufficient number of reports to establish an estimate.

Prices Received for Feed Barley – States: July 2012 with Comparisons

State	July 2011	June 2012	Preliminary July 2012
	(dollars per bushel)	(dollars per bushel)	(dollars per bushel)
Idaho	5.70	4.70	5.70
Minnesota	4.24	(S)	(D)
Montana	4.48	5.63	(D)
North Dakota	5.09	5.54	5.00
Wyoming	(S)	(S)	(S)

(D) Withheld to avoid disclosing data for individual operations.

(S) Insufficient number of reports to establish an estimate.

Prices Received for Corn – States and United States: July 2012 with Comparisons

State	July 2011	June 2012	Preliminary July 2012
	(dollars per bushel)	(dollars per bushel)	(dollars per bushel)
Colorado	6.60	6.37	7.41
Illinois	6.56	6.41	7.65
Indiana	7.04	6.55	7.50
Iowa	6.19	6.37	7.40
Kansas	6.93	6.30	7.50
Kentucky	7.19	6.57	7.60
Michigan	6.82	6.39	7.55
Minnesota	5.83	6.19	7.10
Missouri	6.88	6.54	7.21
Nebraska	6.26	6.35	7.10
North Carolina	7.56	7.00	7.80
North Dakota	5.88	6.06	6.95
Ohio	7.06	6.48	7.80
Pennsylvania	7.54	6.89	7.90
South Dakota	6.10	6.15	7.08
Tennessee	7.05	6.47	7.15
Texas	6.47	6.68	7.55
Wisconsin	6.27	6.44	7.25
United States	6.33	6.37	7.36

Prices Received for Soybeans – States and United States: July 2012 with Comparisons

State	July 2011	June 2012	Preliminary July 2012
	(dollars per bushel)	(dollars per bushel)	(dollars per bushel)
Arkansas	13.80	14.30	16.20
Illinois	13.40	14.10	16.00
Indiana	13.70	14.10	16.00
Iowa	13.00	13.70	15.60
Kansas	13.40	13.90	15.80
Kentucky	13.70	13.80	16.00
Louisiana	12.30	(D)	(D)
Michigan	13.20	13.90	15.70
Minnesota	12.80	13.60	15.20
Mississippi	(D)	14.00	15.50
Missouri	13.50	14.10	15.50
Nebraska	13.10	13.60	15.10
North Carolina	14.00	14.50	16.40
North Dakota	12.80	13.50	14.50
Ohio	13.50	14.20	16.00
South Dakota	12.80	13.60	15.00
Tennessee	13.40	13.60	15.00
Wisconsin	12.90	14.10	15.70
United States	13.20	13.90	15.60

(D) Withheld to avoid disclosing data for individual operations.

Prices Received for Oats – States and United States: July 2012 with Comparisons

State	July 2011	June 2012	Preliminary July 2012
	(dollars per bushel)	(dollars per bushel)	(dollars per bushel)
Illinois	3.13	(D)	(S)
Iowa	3.16	3.72	3.90
Michigan	3.48	(D)	4.10
Minnesota	3.13	3.63	3.70
Montana	(D)	(D)	(S)
Nebraska	3.70	3.83	3.95
New York	(D)	4.16	4.50
North Dakota	2.76	2.95	(S)
Oregon	(S)	(S)	(S)
Pennsylvania	3.66	4.51	4.60
South Dakota	3.75	3.49	3.58
Texas	(S)	(S)	(S)
Wisconsin	3.35	3.59	3.60
United States	3.35	3.77	3.81

(D) Withheld to avoid disclosing data for individual operations.

(S) Insufficient number of reports to establish an estimate.

Prices Received for Sorghum Grain – States and United States: July 2012 with Comparisons

State	July 2011	June 2012	Preliminary July 2012
	(dollars per cwt)	(dollars per cwt)	(dollars per cwt)
Arkansas	(S)	(S)	(S)
Illinois	12.20	(D)	(D)
Kansas	11.60	10.40	13.20
Louisiana	(D)	(S)	(S)
Missouri	12.10	(D)	12.00
Nebraska	12.40	10.90	12.50
Oklahoma	11.10	11.10	14.20
Texas	10.30	9.23	11.70
United States	10.40	9.56	12.00

(D) Withheld to avoid disclosing data for individual operations.

(S) Insufficient number of reports to establish an estimate.

Prices Received for Dry Beans – States and United States: July 2012 with Comparisons

State	July 2011	June 2012	Preliminary July 2012
	(dollars per cwt)	(dollars per cwt)	(dollars per cwt)
California	48.20	(D)	(D)
Colorado	36.70	(D)	(D)
Idaho	36.20	45.60	44.20
Michigan	42.70	42.50	(D)
Minnesota	39.50	42.40	(D)
Nebraska	29.40	43.40	43.30
North Dakota	32.80	44.80	43.60
United States	34.20	44.20	43.80

(D) Withheld to avoid disclosing data for individual operations.

Prices Received for Peanuts (In-Shell) – States and United States: July 2012 with Comparisons

State	July 2011	June 2012	Preliminary July 2012
	(dollars per pound)	(dollars per pound)	(dollars per pound)
Alabama	0.241	0.340	0.329
Florida	0.227	0.314	0.322
Georgia	0.229	0.355	0.352
Mississippi	0.224	0.318	(S)
New Mexico	0.248	(S)	(S)
North Carolina	0.260	0.344	0.352
Oklahoma	0.267	0.280	(S)
South Carolina	0.249	0.342	0.314
Texas	0.272	0.355	0.565
Virginia	0.253	0.315	(D)
United States	0.239	0.344	0.353

(D) Withheld to avoid disclosing data for individual operations.

(S) Insufficient number of reports to establish an estimate.

Prices Received for Sunflower – States and United States: July 2012 with Comparisons

State	July 2011	June 2012	Preliminary July 2012
	(dollars per cwt)	(dollars per cwt)	(dollars per cwt)
Colorado	(D)	(D)	(S)
Kansas	(D)	25.70	(D)
Minnesota	30.60	33.00	(D)
North Dakota	30.50	27.30	25.90
South Dakota	30.20	25.30	(D)
United States	30.40	27.30	25.50

(D) Withheld to avoid disclosing data for individual operations.

(S) Insufficient number of reports to establish an estimate.

Prices Received for Canola – States and United States: July 2012 with Comparisons

State	July 2011	June 2012	Preliminary July 2012
	(dollars per cwt)	(dollars per cwt)	(dollars per cwt)
Minnesota	22.30	(D)	(S)
North Dakota	24.50	27.40	26.50
United States	24.30	27.40	26.50

(D) Withheld to avoid disclosing data for individual operations.

(S) Insufficient number of reports to establish an estimate.

Prices Received for Flaxseed – States and United States: July 2012 with Comparisons

State	July 2011	June 2012	Preliminary July 2012
	(dollars per bushel)	(dollars per bushel)	(dollars per bushel)
North Dakota	15.40	12.90	13.20
United States	15.40	12.90	13.20

Prices Received for Upland Cotton and Cottonseed – States and United States: July 2012 with Comparisons

[Cottonseed marketing year August - February]

State	Cotton, Upland			Cottonseed		
	July 2011	June 2012	Preliminary July 2012	July 2011	June 2012	Preliminary July 2012
	(dollars per pound)	(dollars per pound)	(dollars per pound)	(dollars per ton)	(dollars per ton)	(dollars per ton)
Alabama	0.825	1.010	1.010	(NA)	(NA)	(NA)
Arizona	(D)	(D)	(S)	(NA)	(NA)	(NA)
Arkansas	0.825	(D)	1.010	(NA)	(NA)	(NA)
California	0.914	(D)	(S)	(NA)	(NA)	(NA)
Georgia	0.825	0.972	0.986	(NA)	(NA)	(NA)
Louisiana	0.825	(D)	1.010	(NA)	(NA)	(NA)
Mississippi	0.825	1.010	1.010	(NA)	(NA)	(NA)
North Carolina	0.825	1.010	1.010	(NA)	(NA)	(NA)
Tennessee	0.825	1.010	1.010	(NA)	(NA)	(NA)
Texas	0.787	0.704	(D)	(NA)	(NA)	(NA)
United States	0.825	0.773	0.766	(NA)	(NA)	(NA)

(D) Withheld to avoid disclosing data for individual operations.

(NA) Not available.

(S) Insufficient number of reports to establish an estimate.

Prices Received and Farm Marketings for Upland Cotton and Rice – United States: July 2012 with Comparisons

Item	July 2011	June 2012	Preliminary July 2012
Cotton, Upland			
Average price dollars/pound	0.825	0.773	0.766
Marketings ¹ 1,000 bales	452	725	(NA)
Rice, all			
Average price dollars/cwt	12.90	14.10	14.20
Marketings ² 1,000 cwt	12,369	10,144	(NA)
Rice, long			
Average price dollars/cwt	11.40	13.40	13.70
Marketings ² 1,000 cwt	9,866	7,120	(NA)
Rice, medium and short			
Average price dollars/cwt	19.00	15.70	17.30
Marketings ² 1,000 cwt	2,503	3,024	(NA)

(NA) Not available.

¹ Marketings based on a survey of cotton buyers in the major producing States - Alabama, Arizona, Arkansas, California, Georgia, Louisiana, Mississippi, North Carolina, Tennessee, and Texas.

² Purchases by private firms and rice (rough equivalent) shipped by cooperatives.

Prices Received for Hay by Type – States and United States: July 2012 with Comparisons

State	All hay			Alfalfa hay			Other hay		
	July 2011	June 2012	Preliminary July 2012	July 2011	June 2012	Preliminary July 2012	July 2011	June 2012	Preliminary July 2012
	(dollars per ton)	(dollars per ton)	(dollars per ton)	(dollars per ton)	(dollars per ton)	(dollars per ton)	(dollars per ton)	(dollars per ton)	(dollars per ton)
Arizona	226.00	240.00	225.00	230.00	245.00	230.00	170.00	195.00	190.00
California	223.00	204.00	197.00	237.00	211.00	201.00	164.00	174.00	180.00
Colorado	178.00	233.00	233.00	180.00	235.00	235.00	155.00	190.00	200.00
Idaho	220.00	187.00	179.00	223.00	190.00	180.00	162.00	120.00	150.00
Illinois	127.00	137.00	137.00	150.00	150.00	160.00	92.00	100.00	100.00
Iowa	117.00	137.00	145.00	121.00	142.00	162.00	83.00	93.00	108.00
Kansas	151.00	177.00	178.00	170.00	190.00	205.00	95.00	105.00	115.00
Kentucky	108.00	103.00	107.00	175.00	185.00	185.00	80.00	80.00	80.00
Michigan	103.00	105.00	137.00	110.00	110.00	140.00	85.00	90.00	130.00
Minnesota	113.00	136.00	145.00	120.00	150.00	150.00	90.00	95.00	95.00
Missouri	74.00	91.00	91.00	165.00	190.00	200.00	60.00	75.00	75.00
Montana	97.00	109.00	121.00	97.00	113.00	122.00	94.00	99.00	110.00
Nebraska	93.00	136.00	155.00	99.00	140.00	168.00	76.00	104.00	120.00
Nevada	195.00	213.00	208.00	198.00	215.00	209.00	156.00	172.00	163.00
New Mexico	235.00	270.00	252.00	240.00	276.00	258.00	179.00	205.00	192.00
New York	121.00	124.00	129.00	121.00	175.00	175.00	120.00	110.00	117.00
North Dakota	64.00	73.00	86.00	68.00	79.00	92.00	49.00	55.00	60.00
Ohio	130.00	140.00	183.00	169.00	207.00	217.00	77.00	97.00	136.00
Oklahoma	127.00	141.00	162.00	184.00	205.00	230.00	87.00	91.00	114.00
Oregon	236.00	204.00	195.00	226.00	224.00	217.00	258.00	183.00	175.00
Pennsylvania	160.00	156.00	147.00	217.00	172.00	175.00	133.00	152.00	141.00
South Dakota	102.00	142.00	171.00	106.00	149.00	175.00	81.00	116.00	145.00
Texas	150.00	140.00	144.00	220.00	225.00	238.00	120.00	108.00	104.00
Utah	196.00	196.00	196.00	200.00	198.00	200.00	155.00	158.00	160.00
Washington	185.00	227.00	227.00	180.00	230.00	225.00	200.00	220.00	230.00
Wisconsin	104.00	121.00	121.00	110.00	135.00	135.00	75.00	95.00	95.00
Wyoming	121.00	162.00	173.00	123.00	165.00	175.00	115.00	145.00	165.00
United States	170.00	183.00	184.00	189.00	201.00	198.00	119.00	133.00	143.00

Prices Received for Apples – States and United States: July 2012 with Comparisons

[Equivalent packinghouse-door returns for California, Michigan, New York, and Washington. Prices at point of first sale for other States]

State	Apples, fresh use		
	July 2011	June 2012	Preliminary July 2012
	(dollars per pound)	(dollars per pound)	(dollars per pound)
California	(NA)	(NA)	(NA)
Michigan	(NA)	(NA)	(NA)
New York	(NA)	0.323	(NA)
Ohio	0.640	0.670	0.590
Pennsylvania	(S)	(NA)	(NA)
Virginia	(NA)	(NA)	(NA)
Washington	0.330	0.390	0.419
United States	0.358	0.384	0.419

(NA) Not available.

(S) Insufficient number of reports to establish an estimate.

Prices Received for Citrus Fruits by Utilization – States and United States: July 2011

[Net pounds per box: grapefruit in California-80, Florida-85, Texas-80; lemons-80; oranges in California-80, Florida-90, Texas-85; tangelos-90; tangerines and mandarins in Arizona and California-80, Florida-95]

Commodity, State, and type	FOB packed fresh	Equivalent returns					
		Packinghouse door			On-tree		
		All	Fresh	Process	All	Fresh	Process
	(dollars per box)	(dollars per box)	(dollars per box)	(dollars per box)	(dollars per box)	(dollars per box)	(dollars per box)
Grapefruit							
California ¹	16.70	10.30	10.30	(D)	8.20	8.20	(D)
United States	16.70	10.30	10.30	(D)	8.20	8.20	(D)
Lemons							
California	39.20	22.03	28.30	(D)	16.16	22.43	(D)
United States	39.20	22.03	28.30	(D)	16.16	22.43	(D)
Oranges							
California	20.90	10.19	12.26	(D)	7.74	9.85	(D)
Valencia	20.90	10.19	12.26	(D)	7.74	9.85	(D)
United States	20.90	10.19	12.26	(D)	7.74	9.85	(D)

(D) Withheld to avoid disclosing data for individual operations.

¹ Some processed sales included in fresh sales.

Prices Received for Citrus Fruits by Utilization – States and United States: June 2012

[Net pounds per box: grapefruit in California-80, Florida-85, Texas-80; lemons-80; oranges in California-80, Florida-90, Texas-85; tangelos-90; tangerines and mandarins in Arizona and California-80, Florida-95]

Commodity, State, and type	FOB packed fresh	Equivalent returns					
		Packinghouse door			On-tree		
		All	Fresh	Process	All	Fresh	Process
	(dollars per box)	(dollars per box)	(dollars per box)	(dollars per box)	(dollars per box)	(dollars per box)	(dollars per box)
Grapefruit							
California ¹	24.10	17.57	17.57	(D)	15.43	15.43	(D)
United States	24.10	17.57	17.57	(D)	15.43	15.43	(D)
Lemons							
California	39.40	21.76	28.28	(D)	15.77	22.29	(D)
United States	39.40	21.76	28.28	(D)	15.77	22.29	(D)
Oranges							
California	25.30	14.37	16.51	(D)	11.89	14.05	(D)
Navel and miscellaneous	27.50	15.48	18.69	(D)	12.99	16.23	(D)
Valencia	23.90	13.60	15.09	(D)	11.12	12.63	(D)
Florida							
Valencia	(S)	(S)	(S)	(S)	(S)	(S)	(S)
United States	25.30	14.37	16.51	(D)	11.89	14.05	(D)
Tangerines and mandarins							
California	(D)	(D)	(D)	(D)	(D)	(D)	(D)
United States	(D)	(D)	(D)	(D)	(D)	(D)	(D)

(D) Withheld to avoid disclosing data for individual operations.

(S) Insufficient number of reports to establish an estimate.

¹ Some processed sales included in fresh sales.

Prices Received for Citrus Fruits by Utilization – States and United States: July 2012

[Net pounds per box: grapefruit in California-80, Florida-85, Texas-80; lemons-80; oranges in California-80, Florida-90, Texas-85; tangelos-90; tangerines and mandarins in Arizona and California-80, Florida-95]

Commodity, State, and type	FOB packed fresh	Equivalent returns					
		Packinghouse door			On-tree		
		All	Fresh	Process	All	Fresh	Process
	(dollars per box)	(dollars per box)	(dollars per box)	(dollars per box)	(dollars per box)	(dollars per box)	(dollars per box)
Grapefruit							
California ¹	21.90	15.37	15.37	(D)	13.23	13.23	(D)
United States	21.90	15.37	15.37	(D)	13.23	13.23	(D)
Lemons							
California	37.70	21.96	26.58	(D)	15.97	20.59	(D)
United States	37.70	21.96	26.58	(D)	15.97	20.59	(D)
Oranges							
California	22.30	12.33	13.49	(D)	9.85	11.03	(D)
Navel and miscellaneous	(S)	(S)	(S)	(S)	(S)	(S)	(S)
Valencia	22.30	12.33	13.49	(D)	9.85	11.03	(D)
Florida							
Valencia	(S)	(S)	(S)	(S)	(S)	(S)	(S)
United States	22.30	12.33	13.49	(D)	9.85	11.03	(D)
Tangerines and mandarins							
California	(S)	(S)	(S)	(S)	(S)	(S)	(S)
United States	(S)	(S)	(S)	(S)	(S)	(S)	(S)

(D) Withheld to avoid disclosing data for individual operations.

(S) Insufficient number of reports to establish an estimate.

¹ Some processed sales included in fresh sales.

Prices Received for Potatoes – States and United States: July 2012 with Comparisons

State	July 2011	June 2012	Preliminary July 2012
	(dollars per cwt)	(dollars per cwt)	(dollars per cwt)
California			
Spring	21.70	15.60	13.50
Fall	11.90	8.10	7.85
All ¹	21.40	14.90	13.20
Colorado			
Fresh ²	22.20	11.40	(D)
All ¹	19.30	9.30	9.90
Florida	(S)	(D)	(S)
Idaho			
Fresh ²	14.10	7.40	(D)
Processing	8.10	8.40	(D)
All ¹	11.10	8.05	7.55
Maine	(D)	(D)	(D)
Michigan	(D)	(S)	(S)
Minnesota	31.00	5.80	(S)
New York	(S)	(S)	(S)
North Carolina	12.30	11.60	11.80
North Dakota			
Fresh ²	(S)	(D)	(S)
Processing	(S)	(D)	(D)
All ¹	(S)	8.60	(D)
Oregon	9.80	8.95	8.60
Texas	(S)	(S)	(S)
Virginia	16.30	17.80	13.90
Washington			
Processing	7.85	8.25	8.30
All ¹	10.10	8.45	8.35
Wisconsin			
Fresh ²	(D)	(S)	(S)
Processing	(D)	(S)	(S)
All ¹	(D)	(S)	(S)
United States			
Fresh ²	19.79	12.58	(D)
Processing	8.18	8.54	(D)
All ¹	14.19	9.93	9.76

(D) Withheld to avoid disclosing data for individual operations.

(S) Insufficient number of reports to establish an estimate.

¹ Average price of potatoes sold for all uses, including table stock, processing, seed, and livestock feed.

² Fresh market prices only. Includes table stock prices.

Prices Received for All Milk – States and United States: July 2012 with Comparisons

[Before deduction for hauling. Includes quality, quantity, and other premiums. Excludes hauling subsidies]

State	July 2011		June 2012		Preliminary July 2012	
	Price (dollars per cwt)	Fat test (percent)	Price (dollars per cwt)	Fat test (percent)	Price (dollars per cwt)	Fat test (percent)
Arizona	21.60	3.46	15.20	3.50	15.90	3.49
California	20.22	3.58	14.52	3.59	14.80	3.55
Colorado	21.60	3.41	16.20	3.41	16.70	3.38
Florida	25.80	3.62	19.90	3.62	19.90	3.64
Idaho	19.90	3.51	16.00	3.59	16.50	3.55
Illinois	22.80	3.56	16.70	3.57	17.10	3.52
Indiana	22.80	3.56	16.00	3.51	16.40	3.49
Iowa	22.10	3.57	17.00	3.62	17.30	3.58
Kansas	22.40	3.57	16.60	3.57	17.00	3.54
Michigan	22.70	3.49	16.40	3.52	16.90	3.50
Minnesota	22.50	3.62	17.40	3.68	18.00	3.64
Missouri	22.50	3.54	16.50	3.58	16.80	3.55
New Mexico	21.00	3.43	15.40	3.46	16.00	3.42
New York	23.00	3.58	17.00	3.61	17.10	3.59
Ohio	23.10	3.56	16.60	3.58	17.00	3.55
Oregon	23.50	3.63	17.30	3.70	17.80	3.66
Pennsylvania	23.50	3.60	17.50	3.59	17.90	3.55
Texas	22.50	3.66	16.70	3.69	16.90	3.69
Utah	20.40	3.48	14.60	3.54	15.00	3.48
Vermont	23.10	3.66	17.10	3.66	17.10	3.63
Virginia	24.30	3.57	18.70	3.59	18.90	3.54
Washington	22.30	3.63	16.00	3.70	16.70	3.66
Wisconsin	22.20	3.57	17.10	3.61	18.00	3.57
United States	21.80	3.56	16.20	3.59	16.60	3.56

Prices Received for Milk Cows – States and United States: July 2012 with Comparisons

[Animals sold for dairy herd replacement only. Prices estimated in January, April, July, and October]

State	July 2011 (dollars per head)	April 2012 (dollars per head)	July 2012 (dollars per head)
Arizona	1,500	1,500	1,450
California	1,400	1,300	1,300
Colorado	1,550	1,520	1,430
Florida	1,550	1,450	1,440
Idaho	1,500	1,450	1,400
Illinois	1,440	1,520	1,490
Indiana	1,500	1,450	1,400
Iowa	1,470	1,450	1,470
Kansas	1,400	1,450	1,400
Michigan	1,550	1,600	1,600
Minnesota	1,480	1,490	1,410
Missouri	1,290	1,300	1,200
New Mexico	1,460	1,350	1,350
New York	1,450	1,460	1,460
Ohio	1,520	1,510	1,460
Oregon	1,450	1,430	1,420
Pennsylvania	1,550	1,500	1,460
Texas	1,450	1,400	1,400
Utah	1,340	1,340	1,290
Vermont	1,650	1,600	1,550
Virginia	1,460	1,540	1,500
Washington	1,450	1,350	1,300
Wisconsin	1,570	1,560	1,560
United States	1,480	1,440	1,420

Commodity Parity Prices and Price as Percent of Parity Price – United States: July 2012 with Comparisons

[Parity prices are computed under the provisions of Title III, Subtitle a, Section 301 (a) of the Agricultural Adjustment Act of 1938 as amended by the Agricultural Acts of 1948, 1949, and 1956. See January *Agricultural Prices* for details on adjusted base price and parity price computations. Parity data not available for blank cells. Primary source of data for livestock and milk prices is United States Department of Agriculture's Agricultural Marketing Service]

Commodity and unit	Adjusted base price	Parity price			Price as percent of parity		
		July 2011	June 2012	July 2012	July 2011	June 2012	July 2012
	(dollars)	(dollars)	(dollars)	(dollars)	(percent)	(percent)	(percent)
Basic commodities							
All wheatbushel	0.634	16.60	17.50	15.60	43	40	46
Ricecwt	1.46	44.60	40.30	42.00	32	35	34
Cornbushel	0.414	10.50	11.40	9.88	56	53	62
Cotton							
Upland pound	0.072	1.94	1.99	1.83	46	45	37
American Pima pound	0.141	3.53	3.89	3.32	51	42	41
Peanuts pound	0.026	0.739	0.718	0.695	42	47	47
Designated nonbasic							
All milk, to plants ¹cwt	1.80	49.80	49.70	46.80	37	38	32
Honey, extracted ² pound	0.139	3.67	3.84	3.45	47	45	43
Wool and mohair							
Wool pound	0.104	2.52	2.87	2.37	46	58	56
Mohair pound	0.333	8.86	9.19	8.34	39	45	43
Other nonbasic							
Apples, fresh ³ pound	0.033	0.903	0.911	0.849	33	35	44
Barleybushel	0.436	11.60	12.00	10.90	47	45	45
Canolacwt	1.820	47.60	50.20	44.80	48	46	51
Cottonseed ton	17.40	421.00	480.00	396.00	63	59	55
Dry edible beanscwt	3.01	79.90	83.10	75.20	52	51	51
Flaxseedbushel	1.100	27.90	30.40	26.30	49	45	42
Oatsbushel	0.263	6.84	7.26	6.44	52	49	51
Potatoescwt	0.855	22.80	23.60	21.50	40	39	40
Sorghum graincwt	0.729	18.50	20.10	17.40	57	54	57
Soybeansbushel	1.000	25.90	27.60	24.40	44	43	55
Sunflower, allcwt	2.06	52.30	56.90	49.20	57	50	43
Citrus (equivalent on-tree)							
Grapefruitbox	0.690	18.10	19.00	17.10	34	30	67
Lemonsbox	1.37	37.20	37.80	35.00	38	38	41
Orangesbox	0.698	18.80	19.30	17.70	37	37	49
Tangerinesbox	1.49	39.10	41.10	36.80	54	38	69
Livestock and poultry							
Beef cattlecwt	10.10	276.00	279.00	260.00	43	45	40
Calvescwt	13.90	386.00	384.00	363.00	41	44	38
Hogscwt	5.53	151.00	153.00	142.00	42	42	47
Eggs ¹dozen	0.091	2.49	2.51	2.34	39	32	43
Turkeys, live pound	0.057	1.530	1.570	1.440	47	42	44

¹ Seasonally adjusted price as percentage of parity price.

² Wholesale extracted. Adjusted base price derived from state annual averages prices weighted by production. For 1982 through 1985 the national averages are the support prices.

³ Equivalent packinghouse-door returns for California, New York (apples only), Oregon (except peaches), and Washington. Price at point of first sale for other states.

Commodity Parity Prices – United States: July 2012 with Comparisons

[Parity prices are computed under the provisions of Title III, Subtitle a, Section 301 (a) of the Agricultural Adjustment Act of 1938 as amended by the Agricultural Acts of 1948, 1949, and 1956. See January *Agricultural Prices* for details on adjusted base price and parity price computations]

Commodity and unit	Adjusted base price	Parity price			
		July 2011	June 2012	July 2012	
	(dollars)	(dollars)	(dollars)	(dollars)	
Field crops and miscellaneous					
Hops	pound	0.306	8.41	8.75	8.75
Mustard seed	cwt	2.82	72.80	80.70	80.70
Rapeseed	cwt	2.23	58.60	63.80	63.80
Rye	bushel	0.525	13.50	15.00	15.00
Safflower	cwt	2.02	53.10	57.80	57.80
Spearmint oil	pound	1.50	39.40	42.90	42.90
Sweet potatoes	cwt	2.21	62.20	62.90	63.20
Tobacco					
Flue-cured, 11-14	pound	0.196	5.70	5.61	5.61
Fire-cured, 21-23	pound	0.283	8.02	8.09	8.10
Burley, 31	pound	0.202	5.86	5.78	5.78
Maryland, 32	pound	0.174	5.01	4.98	4.98
Dark air-cured, 35-37	pound	0.256	7.15	7.32	7.32
Pennsylvania seedleaf, 41	pound	0.184	5.23	5.21	5.26
Cigar binder, 51	pound	0.642	18.50	18.30	18.40
Noncitrus fruit					
Apples, processing ^{1 9}	ton	16.50	441.00	472.00	472.00
Apricots					
Fresh ^{2 9}	ton	123.00	3,120.00	3,520.00	3,520.00
Dried (California) ⁹	ton	259.00	7,170.00	7,410.00	7,410.00
Avocados ^{2 9}	ton	204.00	5,420.00	5,830.00	5,840.00
Cherries					
Sweet ⁹	ton	215.00	5,750.00	6,150.00	6,150.00
Tart ⁹	pound	0.034	0.931	0.972	0.973
Cranberry ^{3 9}	barrel	4.84	134.00	138.00	138.00
Dates (California) ^{2 9}	ton	177.00	5,010.00	5,060.00	5,060.00
Grapes					
Raisin variety ⁹	ton	125.00	3,200.00	3,580.00	3,580.00
Other dried ⁹	ton	56.10	1,790.00	1,600.00	1,610.00
Kiwifruit ⁹	ton	94.10	2,580.00	2,690.00	2,690.00
Nectarines, fresh (California) ^{2 9}	ton	54.10	1,510.00	1,550.00	1,550.00
Olives, canning (California) ^{3 9}	ton	89.50	2,390.00	2,560.00	2,560.00

See footnote(s) at end of table.

--continued

Commodity Parity Prices – United States: July 2012 with Comparisons (continued)

[Parity prices are computed under the provisions of Title III, Subtitle a, Section 301 (a) of the Agricultural Adjustment Act of 1938 as amended by the Agricultural Acts of 1948, 1949, and 1956. See January *Agricultural Prices* for details on adjusted base price and parity price computations]

Commodity and unit	Adjusted base price	Parity price			
		July 2011	June 2012	July 2012	
	(dollars)	(dollars)	(dollars)	(dollars)	
Noncitrus fruit - continued					
Papayas (Hawaii) ⁹	pound	0.044	1.26	1.26	1.26
Peaches					
Fresh ^{4 9}	ton	81.90	2,270.00	2,340.00	2,340.00
Dried (California) ⁹	ton	53.70	1,570.00	1,540.00	1,540.00
Processing, excludes dried					
Clingstone (California) ^{3 9}	ton	33.30	923.00	952.00	953.00
Pears					
Fresh ^{4 9}	ton	55.50	1,520.00	1,590.00	1,590.00
Dried (California) ^{1 9}	ton	171.00	4,870.00	4,890.00	4,890.00
Plums (California)					
Fresh, equivalent on-tree ⁹	ton	58.70	1,650.00	1,680.00	1,680.00
Prunes, dried (California) ^{1 9}	ton	148.00	4,020.00	4,230.00	4,230.00
Prunes and plums					
Fresh, excludes California ^{5 9}	ton	62.40	1,750.00	1,780.00	1,790.00
Processing, excludes dried ^{1 9}	ton	25.20	704.00	721.00	721.00
Tree nuts^{6 9}					
Almonds	pound	0.213	5.72	6.09	6.09
Hazelnuts	ton	196.00	5,010.00	5,610.00	5,610.00
Pistachios	pound	0.196	5.31	5.61	5.61
Walnuts	ton		4,850.00	5,120.00	5,120.00
Vegetables, fresh⁷					
Carrots ⁸	cwt	2.69	71.50	76.90	77.00
Cauliflower ⁸	cwt	4.31	117.00	123.00	123.00
Celery ⁸	cwt	2.01	56.10	57.50	57.50
Honeydew melons	cwt	2.09	59.40	59.80	59.80
Lettuce	cwt	2.29	64.30	65.50	65.50
Onions ⁸	cwt	1.49	43.00	42.60	42.60
Tomatoes	cwt	4.68	130.00	134.00	134.00

¹ Equivalent returns at processing plant door.

² Equivalent returns at packinghouse door.

³ Equivalent returns for bulk fruit at first delivery point.

⁴ Equivalent packinghouse-door returns for California, New York (apples only), Oregon (except peaches), and Washington. Price at point of first sale for other states.

⁵ Based on "as sold" prices for fresh fruit in all states.

⁶ Prices In-Shell basis except almonds which are shelled basis.

⁷ FOB shipping point prices.

⁸ Includes some processing.

⁹ Non-citrus fruit and tree nut estimates discontinued October 2011. The program was later reinstated with a publication date of March 15, 2012. Parity prices will be published in the July 2012 *Agricultural Prices* report to include these prices.

Marketing Year for Specified Commodities

Sugarbeets: September 1 to August 31 for United States and all estimating States. Estimating States are California, Colorado, Idaho, Michigan, Minnesota, Montana, Nebraska, North Dakota, Oregon, and Wyoming.

Sugarcane: October 1 to September 30 for United States and all estimating States. Estimating States are Florida, Hawaii, Louisiana, and Texas.

Prices Received for Sugar Crops, Market Year Average and Value of Production – United States: 2011

[Final prices and value of production by States will be published in "Crop Values" February 2013]

	Sugarbeets ¹		Sugarcane ²		
	Price	Value of production	For sugar		Sugar and seed
			Price	Value of production	Value of production
	(dollars per ton)	(1,000 dollars)	(dollars per ton)	(1,000 dollars)	(1,000 dollars)
United States	67.80	1,954,479	47.10	1,312,404	1,384,715

¹ Includes California, Colorado, Idaho, Michigan, Minnesota, Montana, Nebraska, North Dakota, Oregon, and Wyoming.

² Includes Florida, Hawaii, Louisiana, and Texas.

Seasonal Adjustment Factors for All Eggs and All Milk

Base prices used in calculating parity prices are averages of prices received by farmers for several years; therefore, any seasonal variation is largely averaged out. To facilitate comparisons with parity prices, monthly prices for all eggs and all milk are adjusted for seasonal variation.

The seasonally adjusted price is calculated by dividing the monthly price by the adjustment factor. The factors are based on prices for the years 2000-2011. Seasonal adjustment factors are published monthly in the United States table with the seasonal adjusted prices on page 11 of this publication.

Parity Prices

Parity prices based on data for January 2012 and adjusted base price data from which parity prices are computed, are presented in the table on pages 41 through 45. Annual average prices for 2001 through 2011 for use in parity computations, and ten-year averages for 2001-2010 and 2002-2011 are shown on pages 46 through 55.

Parity Prices shown on the following pages are computed under the provisions of Title III, Subtitle A, Section 301(a) of the Agricultural Adjustment Act of 1938 as amended by the Agricultural Acts of 1948, 1949, 1954, and 1956.

The major provisions of the amended Act relating to the calculation of parity prices are as follows:

"(1) (A) The 'parity price' for any agricultural commodity, as of any date, shall be determined by multiplying the adjusted base price of such commodity as of such date by the parity index as of such date."

"(B) The 'adjusted base price' of any agricultural commodity, as of any date, shall be (i) the average of the prices received by farmers for such commodity, at such time as the Secretary may select during each year of the ten-year period ending on the 31st of December last before such date, or during each marketing season beginning in such period if the Secretary determines use of a calendar year basis to be impracticable, divided by (ii) the ratio of the general level of prices received by farmers for agricultural commodities during the period January 1910 to December 1914, inclusive."

"(C) The 'parity index', as of any date, shall be the ratio of (i) the general level of prices for articles and services that farmers buy, wages paid hired farm labor, interest on farm indebtedness secured by farm real estate, and taxes on farm real estate, for the calendar month ending last before such date to (ii) the general level of such prices, wages, rates, and taxes during the period January 1910 to December 1914, inclusive."

"(D) The prices and indexes provided for herein, and the data used in computing them, shall be determined by the Secretary, whose determination shall be final."

Section 301(a) (1) (F) outlines authority for the Secretary of Agriculture to make special adjustments in the method of computing parity prices for particular commodities if the method outlined in the Act results in parity prices seriously out of line with those of other commodities.

The parity prices shown in this report are based on the provisions of the amended Act. Briefly, the actual method of computation is as follows:

a. The average of prices received by farmers for individual commodities for the 10 preceding years is calculated (for 2012 this is the 2002-2011 average). An allowance for unredeemed loans and other supplemental payments resulting from price support programs, such as the deficiency payments for grains and cotton, is included for those commodities for which applicable.

b. This 10-year average is divided by the average of the Index of Prices Received by Farmers for the same 10 preceding calendar years, adjusted to include an allowance for unredeemed loans and other supplemental price support operations, to give an "adjusted base price".

c. Parity prices are computed by multiplying the "adjusted base prices" by the current Parity Index (the Index of Prices Paid by Farmers, including Interest, Taxes, and Wage Rates, 1910-1914=100).

Parity prices are calculated in terms of prices received by farmers in the local markets in which they ordinarily sell. This means that the parity prices apply to the average of all classes and grades of the commodity as sold by all farmers in the United States, except as otherwise specified. Fruits and vegetables for fresh use and for processing are usually considered separate commodities and separate parity prices are calculated. The Agricultural Marketing Agreement Act of 1937 provided for parity prices for certain commodities covered by a marketing agreement or order program. Under present legislation, United States parity prices, with appropriate adjustments where needed, may be used for the purpose of this Act.

The indexes used in the computation of parity prices are published currently in *Agricultural Prices*. For the purpose of illustrating the computation of parity prices, the calculation of the parity price for corn based on data for January 2012 is given below.

The 120-month, January 2002-December 2011 average of prices received by farmers for corn was \$3.56 per bushel, adjusted to allow for unredeemed loans and other supplemental payments resulting from price support operations. The 120-month average of the Index of Prices Received by Farmers, adjusted to include an allowance for unredeemed loans, etc., was 861 (1910-1914=100). The adjusted base price is obtained by dividing \$3.56 by 8.61. The adjusted base prices when multiplied by 2760 percent, the Parity Index (1910-1914=100), results in the corn parity price of \$11.40 for January 2012.

Prices Received For Average Base Period – United States: January 1910-December 1914

Commodity and unit	Average Price
All wheat dollars/bushel	0.880
Rice rough dollars/cwt	1.81
Corn dollars/bushel	0.649
Oats dollars/bushel	0.399
All barley dollars/bushel	0.617
All hay, baled dollars/ton	11.90
Cotton, Upland cents/pound	11.92
Peanuts cents/pound	4.83
Cottonseed dollars/ton	21.80
Flaxseed dollars/bushel	1.68
Potatoes dollars/cwt	1.13
Sweet potatoes dollars/cwt	1.61
Dry edible beans dollars/cwt	3.39
All beef cattle dollars/cwt	5.52
Calves dollars/cwt	6.84
All hogs dollars/cwt	7.29
Lambs dollars/cwt	5.96
Sheep dollars/cwt	4.59
All milk dollars/cwt	1.61
All eggs cents/dozen	21.60
Turkeys, live cents/pound	14.30
Wool cents/pound	17.80

Parity Ratio

The parity ratio (the Index of Prices Received by Farmers for the products they sell divided by the Parity Index (1910-1914=100) provides an indication of the per unit purchasing power of farm commodities generally in terms of the goods and services currently bought by farmers, in relation to purchasing power of farm products in the 1910-1914 base period. Thus, a Parity Ratio less than 100 indicates that the average per unit purchasing power of all farm products is lower than during the 1910-1914 period.

The parity ratio is a measure of price relationships; not a measure of farm income, farmers' total purchasing power, or farmers' welfare. The latter depends upon a number of factors other than price relationships, such as changes in production efficiency and technology, quantities of farm products sold, and supplementary income, including that from off-farm jobs and federal programs.

An adjusted parity ratio is computed and published which incorporates supplementary income for federal farm programs. A "preliminary adjusted parity ratio reflecting government payments" based on the forecast of direct government payments for the year is published each quarter in *Agricultural Prices*.

**Prices Received Adjusted Base Prices and Parity Prices – United States:
January 2012**

Commodity and unit	Adjusted base price ¹ (dollars)	Parity price ² (dollars)
Basic commodities		
All wheat ³ bushel	0.634	17.50
Rice ³ cwt	1.46	40.30
Corn ³ bushel	0.414	11.40
Cotton		
Upland ³ pound	0.072	1.99
American Pima pound	0.141	3.89
Peanuts pound	0.026	0.718
Tobacco		
Flue-cured, 11-14 pound	0.196	5.41
Fire-cured, 21-23 pound	0.283	7.81
Burley, 31 pound	0.202	5.58
Maryland, 32 pound	0.174	4.80
Dark air-cured, 35-37 pound	0.256	7.07
Pennsylvania seedleaf, 41 pound	0.184	5.02
Cigar binder, 51 pound	0.642	17.70
Cigar wrapper, 61 pound	2.88	79.50
Small chickpeas cwt	(NA)	(NA)
Large chickpeas cwt	(NA)	(NA)
Lentils cwt	(NA)	(NA)
Designated nonbasic commodities		
Soybeans ³ bushels	1.000	27.60
All milk sold to plants cwt	1.80	49.70
Honey, wholesale pound	0.139	3.84
Wool and mohair		
Wool ³ pound	0.104	2.87
Mohair pound	0.333	9.19
Other nonbasic commodities		
Field crops and miscellaneous		
All barley ³ bushel	0.436	12.00
Canola cwt	1.82	50.20
Cottonseed ton	17.40	480.00
Dry edible beans cwt	3.01	83.10
Flaxseed bushel	1.100	30.40
Hay, baled ton	13.10	362.00
Hops pound	0.306	8.45
Mustard seed cwt	2.82	77.80
Oats ³ bushel	0.263	7.26
Peppermint oil ³ pound	1.79	49.40
Potatoes cwt	0.855	23.60
Rapeseed cwt	2.23	61.50
Rye bushel	0.525	14.50
Safflower cwt	2.02	55.80
Sorghum grain ³ cwt	0.729	20.10
Spearmint oil pound	1.50	41.40
Sunflower cwt	2.06	56.90
Sweet potatoes cwt	2.21	60.70

See footnote(s) at end of table.

--continued

Prices Received Adjusted Base Prices and Parity Prices – United States: January 2012 (continued)

Commodity and unit	Adjusted base price ¹ (dollars)	Parity price ² (dollars)
Citrus (equivalent on-tree)		
Grapefruit ⁴ box	0.690	19.00
Lemons ⁴ box	1.37	37.80
Oranges ⁴ box	0.698	19.30
Tangerines ⁴ box	1.49	41.10
Deciduous and other fruit		
Apples		
Fresh ⁵ pound	0.033	0.911
Processing ^{4 18} ton	16.50	455.00
Apricots		
Fresh ¹⁸ ton	123.00	3,390.00
Processing ton		
Dried (California) ¹⁸ ton	259.00	7,150.00
Excluding dried ¹⁸ ton	37.00	1,020.00
Avocados ^{4 18} ton	204.00	5,630.00
Cherries		
Sweet ¹⁸ ton	215.00	5,930.00
Tart ^{4 18} pound	0.034	0.938
Cranberries ^{4 18} barrel	4.84	134.00
Dates (California) ^{6 18} ton	177.00	4,890.00
Grapes		
Raisin varieties dried (California) ¹⁸ ton	125.00	3,450.00
Excluding raisin varieties dried ¹⁸ ton	56.10	1,550.00
Kiwifruit ^{4 18} ton	94.10	2,600.00
Nectarines (California)		
Fresh ^{6 18} ton	54.10	1,490.00
Olives (California) ⁸		
Processing		
Crushed for oil ¹⁸ ton	56.30	1,550.00
Excluding crushed ¹⁸ ton	79.10	2,180.00
Canning ¹⁸ ton	89.50	2,470.00
Papayas (Hawaii), fresh ¹⁸ pound	0.044	1.210
Peaches		
Fresh ^{5 8 18} ton	81.90	2,260.00
Processing		
Dried (California) ^{7 18} ton	53.70	1,480.00
Excluding dried		
Clingstone (California) ^{8 18} ton	33.30	919.00
Freestone ^{7 18} ton	26.40	729.00
Pears		
Fresh ^{5 18} ton	55.50	1,530.00
Processing ^{7 18}		
Dried (California) ton	171.00	4,720.00
Excluding dried ¹⁸ ton	39.30	1,080.00

See footnote(s) at end of table.

--continued

Prices Received Adjusted Base Prices and Parity Prices – United States: January 2012 (continued)

Commodity and unit	Adjusted base price ¹ (dollars)	Parity price ² (dollars)
Deciduous and other fruit, continued		
Plums (California) equiv on-tree		
Fresh ^{9 18}	58.70	1,620.00
Processing ¹⁸	6.96	192.00
Prunes, dried (California) ^{4 18}	148.00	4,080.00
Prunes & plums (excluding California)		
Fresh ^{9 18}	62.40	1,720.00
Processing ^{7 18}	25.20	696.00
Strawberries		
Fresh ⁷	9.210	254.00
Processing	3.520	97.20
Sugar crops		
Sugarbeets ^{4 11}	5.27	145.00
Sugarcane ^{4 11}	3.45	95.20
Tree nuts ^{12 18}		
Almonds	0.213	5.88
Hazelnuts	196.00	5,410.00
Pecans, all	356.00	9,820.00
Pistachio, all	0.196	5.41
Walnuts		4,940.00
Vegetables, fresh ¹⁰		
Asparagus	11.80	326.00
Broccoli ¹³	4.02	111.00
Carrots ¹³	2.69	74.20
Cauliflower ¹³	4.31	119.00
Celery ¹³	2.01	55.50
Honeydew melons	2.09	57.70
Lettuce	2.29	63.20
Onions ¹³	1.49	41.10
Sweet corn	2.71	74.80
Tomatoes	4.68	129.00
Vegetables, processing ⁷		
Asparagus	145.00	4,000.00
Green peas	33.70	930.00
Snap beans	20.60	569.00
Sweet corn	9.90	273.00
Tomatoes	8.00	221.00
Livestock and products		
Beef cattle	10.10	279.00
Broilers	0.049	1.350
Calves	13.90	384.00
Eggs	0.091	2.51
Hogs	5.53	153.00
Turkeys	0.057	1.57

See footnote(s) at end of table.

--continued

Prices Received Adjusted Base Prices and Parity Prices – United States: January 2012 (continued)

Commodity and unit	Adjusted base price ¹ (dollars)	Parity price ² (dollars)
Discontinued nonbasic commodities ¹⁴		
Field crops and miscellaneous		
Crude pine gum barrel	13.90	384.00
Dry field peas cwt	1.89	52.20
Popcorn cwt	1.81	50.00
Tobacco		
Virginia fire-cured, 21 pound	0.254	7.01
Kentucky-Tennessee fire-cured, 22-23 pound	0.319	8.80
Dark air-cured, 35-36 pound	0.282	7.78
Sun-cured, 37 pound	0.235	6.49
Cigar filler & binder 42-44, 54-55 pound	0.222	6.13
Puerto Rican filler, 46 pound	0.155	4.28
Tobacco, 62 ¹⁵ pound	3.300	91.10
Citrus (equiv on-tree)		
Temples box	0.37	10.30
Deciduous and other fruit		
Berries, processing		
Blackberries pound	0.620	17.10
Black raspberries pound	0.106	2.93
Boysenberries/youngberries pound	0.088	2.43
Gooseberries pound	0.037	1.020
Loganberries pound	0.060	1.66
Red raspberries pound	0.084	2.32
Nectarines, processing ¹⁶ ton	4.21	116.00
Seed crops		
Alfalfa cwt	19.30	533.00
Bentgrass cwt	18.90	522.00
Chewings fescue cwt	10.00	276.00
Crimson clover cwt	8.40	232.00
Hairy vetch cwt	5.81	160.00
Ladino clover cwt	24.70	682.00
Lespedeza cwt	8.31	229.00
Merion Kentucky bluegrass cwt	22.00	607.00
Orchardgrass cwt	7.16	198.00
Red clover cwt	12.00	331.00
Red fescue cwt	10.10	279.00
Tall fescue cwt	3.67	101.00
Timothy cwt	6.40	177.00
Vegetables, fresh		
Artichokes cwt	4.55	126.00
Cabbage cwt	1.38	38.10
Cantaloupes cwt	2.13	58.80
Cucumbers cwt	2.28	62.90
Eggplant cwt	2.41	66.50
Escarole cwt	3.10	85.60
Garlic cwt	2.93	80.90
Green peppers cwt	3.60	99.40
Snap beans cwt	4.51	124.00
Spinach cwt	3.95	109.00
Watermelon cwt	0.846	23.30
Vegetables, processing		
Beets ton	7.79	215.00
Cabbage ton	6.01	166.00
Lima beans ton	67.00	1,850.00
Spinach ton	14.50	400.00
Livestock and products		
Beeswax pound	0.291	8.03
Lambs ¹⁷ cwt	11.70	323.00
Sheep ¹⁷ cwt	4.38	119.00

See footnote(s) at end of table.

--continued

Adjusted Base Price and United States Parity Prices Based on data for January 2012 (continued)

(NA) Not available.

- 1/ Adjusted base price 1910-1914 derived by dividing the average of 10 season average prices 2002-2011, including an allowance where appropriate for unredeemed loans and other supplemental payments resulting from price support operations, by 861 percent (120-month, January 2002-December 2011 average of the index of prices received by farmers adjusted to include an allowance for unredeemed loans and other supplemental payments) unless otherwise noted.
- 2/ These parity prices are the legally applicable parity prices for the following calendar month.
- 3/ Adjusted base price 1910-1914 derived from 120-month, January 2002-December 2011 average including an allowance where appropriate for unredeemed loans and other supplemental payments resulting from price support operations.
- 4/ The 2011 marketing year average prices are not yet available for these commodities. Therefore, the adjusted base prices are brought forward from 2010, except citrus items (excluding limes) and cranberries.
- 5/ Equivalent packinghouse-door returns for California, Michigan, New York (apples only), and Washington (apples, peaches, and pears). Prices "as sold" for other states.
- 6/ Equivalent returns at packinghouse-door.
- 7/ Equivalent returns at processing plant door.
- 8/ Equivalent returns for bulk fruit at first delivery point.
- 9/ Based on 'as sold' prices for fresh fruit in all states.
- 10/ Average FOB shipping point prices.
- 11/ Relates to prices including average conditional payments per ton made under the sugar acts of 1937 and 1948. Crop deficiency and abandonment payments not included.
- 12/ Prices on in-shell basis except almonds which are on shelled basis.
- 13/ Includes some processing.
- 14/ Monthly and/or season average prices are no longer estimated for these items. Therefore, the adjusted base price is brought forward from July 1986.
- 15/ Monthly and/or season average prices are no longer estimated for this item. The adjusted base price is brought forward from 1988.
- 16/ Processing prices combined with fresh beginning in 2002.
- 17/ Sheep and lamb prices discontinued January 2011.
- 18/ Non-citrus fruit and tree nut estimates discontinued October 2011. The program was later reinstated with a publication date of March 15, 2012. Parity prices will be published in the July 2012 "Agricultural Prices" report to include these prices.

Prices Received Calendar Year Average Prices and Index used to Calculate Agricultural Commodity Parity Prices – United States: 2002-2011

[Average used to compute "adjusted base prices". Averages for 2011 and 2002-2011 are preliminary. Simple average of monthly prices]

Commodity and unit	2002	2003	2004	2005	2006	2007	2008
Prices received index, 1910-1914=100percent	620	674	751	726	730	862	947
	(dollars)	(dollars)	(dollars)	(dollars)	(dollars)	(dollars)	(dollars)
Basic commodities							
Cornbushel	2.13	2.27	2.47	1.96	2.28	3.39	4.78
Cotton, Uplandpound	0.336	0.517	0.543	0.427	0.475	0.500	0.608
All wheatbushel	3.41	3.45	3.57	3.36	4.03	5.76	8.02
Ricecwt	4.07	5.78	8.43	7.04	8.73	10.50	16.20
Small chickpeas ¹cwt	(NA)	16.00	14.20	14.20	15.50	15.70	26.70
Large chickpeas ¹cwt	(NA)	22.40	25.60	26.30	27.80	28.40	35.30
Lentils ¹cwt	(NA)	17.20	14.40	11.00	10.50	17.20	32.40
Designated nonbasic commodities							
All milkcwt	12.10	12.50	16.10	15.10	12.90	19.10	18.30
Other nonbasic commodities							
Field crops and miscellaneous							
All barleybushel	2.39	2.86	2.61	2.43	2.72	3.59	5.00
All dry beanscwt	22.60	17.70	21.20	24.10	19.50	25.60	34.30
Flaxseedbushel	5.23	6.00	7.18	8.87	5.50	8.73	15.40
All hay, baled ton	93.70	88.80	89.50	96.30	105.00	124.00	148.00
Oatsbushel	1.88	1.71	1.52	1.64	1.82	2.44	3.29
Sorghumcwt	3.80	3.96	4.13	3.21	4.34	6.27	8.12
Soybeansbushel	4.93	6.08	7.56	5.95	5.65	7.74	11.30
All sunflowercwt	11.60	11.80	13.10	14.10	12.00	17.00	25.30
Fruit							
Apples, fresh ²pound	0.241	0.257	0.273	0.217	0.270	0.325	0.394
Livestock and products							
Beef cattlecwt	66.60	80.00	85.50	89.60	87.10	90.00	89.20
Broilerspound	0.298	0.353	0.452	0.433	0.361	0.439	0.466
Calvescwt	97.60	103.60	121.60	135.00	133.00	122.00	114.00
Eggsdozen	0.607	0.746	0.697	0.545	0.590	0.929	1.060
All hogscwt	33.30	37.50	51.20	49.60	46.30	46.70	47.70
Turkeyspound	0.365	0.346	0.414	0.445	0.476	0.520	0.564

See footnote(s) at end of table.

--continued

Prices Received Calendar Year Average Prices and Index used to Calculate Agricultural Commodity Parity Prices – United States: 2002-2011 (continued)

[Average used to compute "adjusted base prices". Averages for 2011 and 2002-2011 are preliminary. Simple average of monthly prices]

Commodity and unit	2009	2010	2011	2001-2010 Average	2002-2011 Average	
					As computed	For parity purposes ³
Prices received index, 1910-1914=100	832	898	1,130	771	816	861
	(dollars)	(dollars)	(dollars)	(dollars)	(dollars)	(dollars)
Basic commodities						
Corn	3.75	3.83	6.01	2.88	3.29	3.56
Cotton, Upland	0.492	0.710	0.880	0.500	0.549	0.616
All wheat	5.30	5.12	7.44	4.49	4.95	5.46
Rice	15.20	13.20	13.50	9.43	10.30	12.60
Small chickpeas ¹	19.90	22.80	23.50	(NA)	(NA)	(NA)
Large chickpeas ¹	31.10	28.50	39.20	(NA)	(NA)	(NA)
Lentils ¹	26.80	25.70	27.50	(NA)	(NA)	(NA)
Designated nonbasic commodities						
All milk	12.80	16.30	20.10	15.00	15.50	15.50
Other nonbasic commodities						
Field crops and miscellaneous						
All barley	4.83	4.00	4.79	3.26	3.52	3.75
All dry beans	31.00	27.90	34.60	24.10	25.90	25.90
Flaxseed	8.60	10.20	14.20	7.97	8.99	9.43
All hay, baled	117.00	110.00	157.00	107.00	113.00	113.00
Oats	2.30	2.37	3.42	2.04	2.24	2.26
Sorghum	5.59	6.50	10.70	4.93	5.66	6.28
Soybeans	10.10	9.97	12.50	7.37	8.18	8.61
All sunflower	18.70	16.80	29.10	14.90	17.00	17.70
Fruit						
Apples, fresh ²	0.233	0.262	0.325	0.265	0.280	0.280
Livestock and products						
Beef cattle	80.40	92.00	113.00	83.20	87.30	87.30
Broilers	0.453	0.493	0.467	0.414	0.422	0.422
Calves	108.00	121.00	142.00	116.00	120.00	120.00
Eggs	0.822	0.857	0.975	0.746	0.783	0.783
All hogs	42.00	55.10	66.50	45.40	47.60	47.60
Turkeys	0.499	0.612	0.680	0.463	0.492	0.492

(NA) Not available.

¹ Data not available for all years to calculate ten year average price.

² Equivalent packinghouse-door returns for California, New York (applies only starting in 1985), Oregon (except peaches), and Washington. Prices "as sold" for other states.

³ Includes an allowance for price support operations as authorized by the Secretary of Agriculture, January 30, 1956. This entry is omitted for commodities not affected by the adjustment.

Prices Received Market Year Average Prices used to Calculate Agricultural Commodity Parity Prices – United States: 2002-2011

[Average used to compute "adjusted base prices". Averages for 2011 and 2002-2011 are preliminary. Prices are the averages for the marketing season computed by weighting state prices by quantities sold]

Commodity and unit	2002	2003	2004	2005	2006	2007
	(dollars)	(dollars)	(dollars)	(dollars)	(dollars)	(dollars)
Basic Commodities						
Cotton, American Pima	0.860	1.210	1.268	1.244	0.943	0.988
Peanuts	0.182	0.193	0.189	0.173	0.177	0.205
Tobacco						
Flue-cured 11-14	1.820	1.851	1.845	1.474	1.496	1.527
Fire-cured 21-23	2.357	2.455	2.513	2.369	2.392	2.401
Burley 31	1.974	1.977	1.994	1.564	1.638	1.601
Maryland 32	1.348	1.463	1.308	1.350	1.500	(D)
Dark air-cured 35-37	2.098	2.154	2.187	2.137	2.200	2.197
Pennsylvania Seedleaf, 41	1.450	1.400	1.450	1.450	1.550	1.650
Cigar binder, 51	5.372	3.584	5.309	5.645	6.586	6.472
Cigar wrapper, 61	22.500	26.000	25.300	21.000	21.700	24.500
Designated nonbasic commodities						
Honey	1.327	1.387	1.088	0.922	1.005	1.077
Wool and mohair ¹						
Wool	0.530	0.740	0.800	0.710	0.710	0.870
Mohair	1.58	1.66	1.94	2.73	3.59	3.64
Other nonbasic commodities						
Field crops and miscellaneous						
Canola	10.60	10.60	10.70	9.62	11.90	18.30
Cottonseed	101.00	117.00	107.00	96.00	111.00	162.00
Hops	1.91	1.86	1.88	1.94	2.05	2.99
Mustard seed	15.40	16.00	15.20	13.50	13.70	28.00
Peppermint oil	11.90	12.00	11.90	12.20	12.70	13.60
Potatoes	6.67	5.88	5.65	7.04	7.31	7.51
Rapeseed	9.73	11.00	14.10	14.30	14.90	17.70
Rye	3.32	2.93	3.22	3.30	3.32	5.01
Safflower	12.20	13.70	12.10	12.40	13.50	18.60
Spearmint oil	9.11	9.29	9.62	10.70	11.30	12.60
Sweet potatoes	16.80	19.20	17.50	18.10	18.20	18.30

See footnote(s) at end of table.

--continued

Prices Received Market Year Average Prices used to Calculate Agricultural Commodity Parity Prices – United States: 2002-2011 (continued)

[Average used to compute "adjusted base prices". Averages for 2011 and 2002-2011 are preliminary. Prices are the averages for the marketing season computed by weighting state prices by quantities sold]

Commodity and unit	2008	2009	2010	2011	2001-10 Average	2002-11 Average
	(dollars)	(dollars)	(dollars)	(dollars)	(dollars)	(dollars)
Basic Commodities						
Cotton, American Pimapound	0.989	1.170	1.790	(D)	1.130	1.210
Peanutspound	0.230	0.217	0.225	0.280	0.203	0.207
Tobacco						
Flue-cured 11-14pound	1.757	1.754	1.690	1.682	1.710	1.690
Fire-cured 21-23pound	2.460	2.468	2.467	2.557	2.400	2.440
Burley 31pound	1.669	1.709	1.549	1.751	1.760	1.740
Maryland 32pound	(D)	1.600	1.550	1.550	1.500	1.500
Dark air-cured 35-37pound	2.246	2.242	2.242	2.278	2.150	2.200
Pennsylvania Seedleaf, 41pound	1.700	1.700	1.750	1.700	1.580	1.580
Cigar binder, 51pound	5.805	5.039	5.245	6.200	5.460	5.530
Cigar wrapper, 61pound	28.500	25.000	29.000	(D)	24.400	24.800
Designated nonbasic commodities						
Honeypound	1.421	1.473	1.619	(NA)	1.100	(NA)
Wool and mohair¹						
Woolpound	0.980	0.790	1.150	1.670	0.760	0.892
Mohairpound	3.31	2.65	3.49	4.12	2.67	2.87
Other nonbasic commodities						
Field crops and miscellaneous						
Canolacwt	18.70	16.20	19.30	23.00	13.50	14.90
Cottonseedton	223.00	158.00	161.00	260.00	133.00	150.00
Hopspound	4.03	3.57	3.28	2.77	2.54	2.63
Mustard seedcwt	43.80	30.40	25.90	33.30	21.40	23.50
Peppermint oilpound	15.90	20.10	20.30	23.00	14.20	15.40
Potatoescwt	9.09	8.25	9.20	(NA)	6.95	(NA)
Rapeseedcwt	25.30	26.30	23.40	27.00	16.80	18.40
Ryebushel	6.32	4.93	5.03	7.77	4.02	4.52
Safflowercwt	24.80	17.10	17.20	24.30	15.30	16.60
Spearmint oilpound	14.90	16.50	16.20	18.70	11.90	12.90
Sweet potatoescwt	21.20	21.80	19.80	18.80	18.60	19.00

See footnote(s) at end of table.

--continued

Prices Received Market Year Average Prices used to Calculate Agricultural Commodity Parity Prices – United States: 2002-2011 (continued)

[Average used to compute "adjusted base prices". Averages for 2011 and 2002-2011 are preliminary. Prices are the averages for the marketing season computed by weighting state prices by quantities sold]

Commodity and unit	2002	2003	2004	2005	2006	2007
	(dollars)	(dollars)	(dollars)	(dollars)	(dollars)	(dollars)
Fruit, citrus (equivalent on-tree) ²						
Grapefruit box	2.64	3.03	3.66	12.65	8.74	5.19
Lemons box	11.36	6.53	8.01	8.17	10.59	15.98
Oranges box	4.25	3.56	3.74	4.41	6.11	9.84
Tangerines box	9.59	10.06	8.36	13.01	10.64	14.81
Deciduous and Other Fruit						
Apples ³						
Processing ton	130.00	131.00	107.00	106.00	129.00	190.00
Apricots						
Fresh ⁴ ton	678.00	618.00	672.00	1,100.00	1,450.00	829.00
Processing ³						
Dried (California) ton	1,590.00	1,760.00	1,950.00	2,060.00	2,600.00	1,510.00
Excluding dried ton	268.00	262.00	279.00	266.00	314.00	325.00
Avocados ton	1,920.00	1,690.00	1,620.00	1,130.00	1,800.00	1,770.00
Cherries						
Sweet ton	1,550.00	1,410.00	1,570.00	1,990.00	1,620.00	1,820.00
Tart pound	0.448	0.354	0.328	0.238	0.215	0.273
Cranberries barrel	32.20	33.90	32.90	35.20	41.10	50.70
Dates (California) ton	1,550.00	1,380.00	1,310.00	1,430.00	2,140.00	2,290.00
Grapes						
Raisin varieties						
Dried (California) ton	393.00	563.00	1,210.00	1,000.00	1,070.00	1,040.00
Excluding raisin variety, dried ton	490.00	491.00	522.00	507.00	599.00	567.00
Kiwifruit ⁵ ton	783.00	853.00	809.00	620.00	911.00	950.00
Nectarines						
Fresh ^{5 6} ton	382.00	436.00	342.00	507.00	522.00	340.00
Olives (California)						
Processing ⁷						
Crushed for oil ton	240.00	238.00	361.00	526.00	405.00	775.00
Excluding crushed ton	594.00	420.00	589.00	568.00	855.00	643.00
Canning ⁷ ton	662.00	458.00	701.00	667.00	926.00	700.00

See footnote(s) at end of table.

--continued

Prices Received Market Year Average Prices used to Calculate Agricultural Commodity Parity Prices – United States: 2002-2011 (continued)

[Average used to compute "adjusted base prices". Averages for 2011 and 2002-2011 are preliminary. Prices are the averages for the marketing season computed by weighting state prices by quantities sold]

Commodity and unit	2008	2009	2010	2011	2001-2010 Average	2002-2011 Average
	(dollars)	(dollars)	(dollars)	(dollars)	(dollars)	(dollars)
Fruit, citrus (equivalent on-tree) ²						
Grapefruitbox	4.80	4.37	7.28	7.06	5.49	5.94
Lemonsbox	26.59	8.32	11.29	11.18	11.20	11.80
Orangesbox	6.74	6.62	7.67	7.15	5.68	6.01
Tangerinesbox	14.25	14.77	14.69	17.84	11.80	12.80
Deciduous and Other Fruit						
Apples ³						
Processington	198.00	132.00	186.00	223.00	(S)	(S)
Apricots						
Fresh ⁴ton	918.00	1,150.00	1,350.00	1,830.00	942.00	1,060.00
Processing ³						
Dried (California)ton	2,364.00	2,970.00	2,860.00	2,590.00	2,160.00	2,230.00
Excluding driedton	350.00	371.00	368.00	386.00	306.00	319.00
Avocadoston	1,850.00	1,440.00	2,750.00	(NA)	1,760.00	(NA)
Cherries						
Sweetton	2,390.00	1,330.00	2,330.00	2,530.00	1,720.00	1,850.00
Tartpound	0.377	0.192	0.222	0.300	0.283	0.295
Cranberriesbarrel	58.10	44.20	43.90	44.60	39.60	41.70
Dates (California)ton	1,260.00	1,180.00	1,270.00	1,370.00	1,520.00	1,520.00
Grapes						
Raisin varieties						
Dried (California)ton	1,130.00	1,130.00	1,510.00	1,730.00	962.00	1,080.00
Excluding raisin variety, driedton	531.00	569.00	551.00	(D)	539.00	483.00
Kiwifruit ⁵ton	888.00	847.00	768.00	771.00	(S)	(S)
Nectarines						
Fresh ⁵ton	367.00	631.00	553.00	582.00	456.00	466.00
Olives (California)						
Processing ⁷						
Crushed for oilton	670.00	540.00	532.00	563.00	459.00	485.00
Excluding crushedton	(D)	(D)	(D)	(D)	646.00	681.00
Canning ⁷ton	767.00	855.00	862.00	1,110.00	737.00	771.00

See footnote(s) at end of table.

--continued

Prices Received Market Year Average Prices used to Calculate Agricultural Commodity Parity Prices – United States: 2002-2011 (continued)

[Average used to compute "adjusted base prices". Averages for 2011 and 2002-2011 are preliminary. Prices are the averages for the marketing season computed by weighting state prices by quantities sold]

Commodity and unit	2002	2003	2004	2005	2006	2007
	(dollars)	(dollars)	(dollars)	(dollars)	(dollars)	(dollars)
Papayas, fresh (Hawaii) pound	0.277	0.319	0.361	0.364	0.413	0.417
Peaches						
Fresh ⁴ ton	613.00	581.00	548.00	718.00	779.00	706.00
Processing ³ ton	456.00	446.00	382.00	504.00	802.00	530.00
Excluding dried						
Clingstone (California) ton	247.00	215.00	263.00	254.00	292.00	304.00
Freestone ton	198.00	203.00	182.00	187.00	240.00	235.00
Pears						
Fresh ⁸ ton	361.00	358.00	430.00	461.00	528.00	534.00
Processing ³ ton	1,320.00	1,350.00	1,030.00	1,620.00	1,410.00	1,800.00
Excluding dried ton	206.00	197.00	201.00	193.00	199.00	489.00
Plums (California)						
Fresh ton	(D)	(D)	(D)	(D)	(D)	(D)
Processing ton	(D)	(D)	(D)	(D)	(D)	(D)
Prunes, dried (California) ³ ton	810.00	772.00	1,500.00	1,470.00	1,390.00	1,450.00
Prunes & plums, excluding California						
Fresh ⁴ ton	396.00	446.00	468.00	759.00	639.00	622.00
Processing ³ ton	204.00	254.00	228.00	257.00	267.00	213.00
Strawberries						
Fresh ^{9 10} pound	0.713	0.749	0.684	0.689	0.722	0.821
Processing ton	33.100	28.100	26.300	28.900	28.400	27.700
Sugar crops ¹¹						
Sugarbeets ton	39.60	41.40	36.90	43.50	44.20	42.00
Sugarcane for sugar ton	28.40	29.50	28.30	28.40	30.40	29.40

See footnote(s) at end of table.

--continued

Prices Received Market Year Average Prices used to Calculate Agricultural Commodity Parity Prices – United States: 2002-2011 (continued)

[Average used to compute "adjusted base prices". Averages for 2011 and 2002-2011 are preliminary. Prices are the averages for the marketing season computed by weighting state prices by quantities sold]

Commodity and unit	2008	2009	2010	2011	2001-10 Average	2002-11 Average
	(dollars)	(dollars)	(dollars)	(dollars)	(dollars)	(dollars)
Papayas, fresh (Hawaii) pound	0.455	0.467	0.380	0.350	0.373	0.380
Peaches						
Fresh ⁴ ton	684.00	811.00	788.00	826.00	684.00	705.00
Processing ³						
Dried (California) ton	452.00	359.00	278.00	411.00	472.00	462.00
Excluding dried						
Clingstone (California) ton	347.00	338.00	325.00	303.00	283.00	287.00
Freestone ton	239.00	263.00	257.00	261.00	221.00	227.00
Pears						
Fresh ⁸ ton	589.00	458.00	599.00	460.00	465.00	478.00
Processing ³						
Dried (California) ton	1,400.00	1,710.00	1,800.00	1,210.00	1,470.00	1,470.00
Excluding dried ton	530.00	390.00	554.00	423.00	313.00	338.00
Plums (California)						
Fresh ton	(D)	(D)	(D)	(D)	(D)	(D)
Processing ton	(D)	(D)	(D)	(D)	(D)	(D)
Prunes, dried (California) ³ ton	1,500.00	1,230.00	1,350.00	1,200.00	1,220.00	1,270.00
Prunes & plums, excluding California						
Fresh ⁴ ton	547.00	472.00	551.00	468.00	525.00	537.00
Processing ³ ton	171.00	149.00	193.00	235.00	212.00	217.00
Strawberries						
Fresh ^{9 10} pound	0.841	0.861	0.908	0.944	0.775	0.793
Processing ton	36.000	30.900	29.200	34.800	29.800	30.300
Sugar crops ¹¹						
Sugarbeets ton	48.10	51.50	66.90	(NA)	45.40	(NA)
Sugarcane for sugar ton	29.50	34.80	41.70	(NA)	29.70	(NA)

See footnote(s) at end of table.

--continued

Prices Received Market Year Average Prices used to Calculate Agricultural Commodity Parity Prices – United States: 2002-2011 (continued)

[Average used to compute "adjusted base prices". Averages for 2011 and 2002-2011 are preliminary. Prices are the averages for the marketing season computed by weighting state prices by quantities sold]

Commodity and unit	2002	2003	2004	2005	2006	2007
	(dollars)	(dollars)	(dollars)	(dollars)	(dollars)	(dollars)
Tree nuts ¹²						
Almonds pound	1.11	1.57	2.21	2.81	2.06	1.75
Hazelnuts ton	1,000.00	1,030.00	1,440.00	2,240.00	1,080.00	2,040.00
Pecans, all pound	0.955	0.984	1.760	1.450	1.560	1.120
Pistachio, all pound	1.10	1.22	1.34	2.05	1.89	1.41
Walnuts ton	1,170.00	1,160.00	1,390.00	1,570.00	1,630.00	2,290.00
Mushrooms, all pound	1.05	1.06	1.08	1.07	1.05	1.16
Vegetables, fresh ⁹						
Asparaguscwt	110.00	105.00	81.30	87.40	88.90	98.90
Broccolicwt	31.40	32.70	33.20	(D)	33.70	36.70
Carrotscwt	19.10	19.00	20.30	21.00	20.60	22.10
Cauliflowercwt	32.20	35.10	30.80	(D)	32.30	34.40
Celery ¹³cwt	13.00	13.60	15.00	14.10	18.40	20.80
Honeydew melonscwt	18.10	18.80	17.60	19.00	18.20	17.70
Lettucecwt	21.10	18.10	16.90	15.50	16.90	21.70
Onions ¹³cwt	12.10	13.70	8.93	12.40	16.10	11.10
Sweet corncwt	19.20	19.20	19.20	22.10	23.00	22.70
Tomatoescwt	31.60	37.50	37.40	41.60	43.70	34.80
Vegetables, processing ³						
Asparagus ton	1,110.00	1,170.00	1,170.00	1,050.00	1,150.00	1,260.00
Green peas ton	253.00	251.00	255.00	270.00	247.00	259.00
Snap beans ton	151.00	157.00	158.00	140.00	157.00	168.00
Sweet corn ton	68.00	70.40	72.10	68.40	66.80	81.80
Tomatoes ton	58.20	58.70	58.60	60.90	66.40	71.20

See footnote(s) at end of table.

--continued

Prices Received Market Year Average Prices used to Calculate Agricultural Commodity Parity Prices – United States: 2002-2011 (continued)

[Average used to compute "adjusted base prices". Averages for 2011 and 2002-2011 are preliminary. Prices are the averages for the marketing season computed by weighting state prices by quantities sold]

Commodity and unit	2008	2009	2010	2011	2001-10 Average	2002-11 Average
	(dollars)	(dollars)	(dollars)	(dollars)	(dollars)	(dollars)
Tree nuts ¹²						
Almonds pound	1.45	1.65	1.79	1.92	1.73	1.83
Hazelnuts ton	1,620.00	1,690.00	2,410.00	2,330.00	1,530.00	1,690.00
Pecans, all pound	1.340	1.430	2.300	2.430	1.350	1.530
Pistachio, all pound	2.05	1.67	2.22	1.98	1.60	1.69
Walnuts ton	1,280.00	1,710.00	2,040.00	(NA)	1,540.00	(NA)
Mushrooms, all pound	1.18	1.17	1.17	1.18	1.11	1.12
Vegetables, fresh ⁹						
Asparagus cwt	103.00	108.00	122.00	120.00	104.00	102.00
Broccoli cwt	36.20	39.80	37.60	34.90	33.70	34.60
Carrots cwt	24.50	25.20	26.60	33.10	21.60	23.20
Cauliflower cwt	40.70	44.30	41.80	46.70	35.30	37.10
Celery ¹³ cwt	18.70	20.40	18.90	20.30	16.80	17.30
Honeydew melons cwt	17.80	15.50	15.20	22.00	17.90	18.00
Lettuce cwt	20.10	22.40	21.10	23.10	19.20	19.70
Onions ¹³ cwt	11.90	15.00	15.60	11.20	12.80	12.80
Sweet corn cwt	25.90	29.30	25.60	26.60	22.60	23.30
Tomatoes cwt	45.50	40.40	48.40	42.50	39.10	40.30
Vegetables, processing ³						
Asparagus ton	1,360.00	1,330.00	1,360.00	1,510.00	1,200.00	1,250.00
Green peas ton	360.00	319.00	287.00	399.00	277.00	290.00
Snap beans ton	219.00	191.00	193.00	236.00	170.00	177.00
Sweet corn ton	120.00	104.00	85.30	115.00	81.00	85.20
Tomatoes ton	79.80	87.20	72.50	75.60	67.30	68.90

(D) Withheld to avoid disclosing data for individual operations.

(NA) Not available.

(S) Insufficient number of reports to establish an estimate.

¹ Average local market price; does not include incentive payment per pound, the 2001-2010 and 2002-2011 averages for parity purposes include this allowance.

² Consistent with legislation quoted in this report, citrus prices shown for 2011 relate to the citrus crop designated as 2010-2011 in the production reports.

³ Equivalent returns at processing plant door.

⁴ Based on "as sold" prices for fresh fruit in all states.

⁵ Equivalent returns at packinghouse-door. Includes some processing beginning in 2002.

⁶ Processed estimates discontinued in 2009.

⁷ Equivalent returns for bulk fruit at first delivery point.

⁸ Equivalent packinghouse-door returns for California, New York (applies only starting in 1985), Oregon (except peaches), and Washington. Prices "as sold" for other states.

⁹ Average F.O.B. shipping point prices.

¹⁰ Includes strawberries for processing in states where the processing crop is not estimated separately.

¹¹ Prices include average conditional payments per ton made under the sugar acts of 1937 and 1948. Crop deficiency and abandonment payments not included.

¹² Prices on in-shell basis except almonds which are on shelled basis.

¹³ Includes some processing.

Prices Received Indexes as a Percent of 1990-1992 Base, Monthly and Annual Average – United States: 2008-2012

[Revised historical price indexes for months not shown are available at www.nass.usda.gov. Blank data cells indicate estimation period has not begun]

Year	All products												
	January	February	March	April	May	June	July	August	September	October	November	December	Average ¹
2008 ...	145	146	146	146	152	158	159	156	154	151	142	135	149
2009 ...	139	126	126	129	130	134	131	126	126	134	136	136	131
2010 ...	136	132	137	135	138	136	139	142	144	151	154	153	141
2011 ...	166	171	173	176	178	180	183	184	180	184	184	179	178
2012 ...	188	181	184	178	178	182	193						183
Year	All crops												
	January	February	March	April	May	June	July	August	September	October	November	December	Average ¹
2008 ...	159	164	167	169	173	183	182	177	174	168	158	150	169
2009 ...	161	146	147	151	150	159	150	146	143	152	154	150	151
2010 ...	149	145	150	146	148	145	149	153	153	164	172	170	154
2011 ...	189	200	197	200	208	210	211	211	203	203	206	198	203
2012 ...	212	206	210	207	209	213	233						213
Year	Food grains												
	January	February	March	April	May	June	July	August	September	October	November	December	Average ¹
2008 ...	248	293	306	301	283	255	241	257	249	232	229	212	259
2009 ...	220	205	201	200	200	194	177	170	161	163	172	173	186
2010 ...	177	175	173	166	158	145	154	181	189	190	199	214	177
2011 ...	220	232	233	244	253	243	236	248	246	237	236	236	239
2012 ...	229	226	227	226	218	224	275						232
Year	Feed grains & hay												
	January	February	March	April	May	June	July	August	September	October	November	December	Average ¹
2008 ...	173	193	200	215	227	231	225	227	218	193	187	179	206
2009 ...	188	169	169	168	172	169	154	148	143	155	157	155	162
2010 ...	158	153	153	148	152	148	151	157	173	185	194	202	165
2011 ...	209	232	230	263	266	262	262	281	269	249	253	253	252
2012 ...	261	268	271	272	273	269	302						274
Year	Cotton												
	January	February	March	April	May	June	July	August	September	October	November	December	Average ¹
2008 ...	101	104	104	108	107	106	109	89	101	97	90	88	100
2009 ...	76	68	67	74	74	74	72	82	88	97	98	105	81
2010 ...	100	107	107	110	110	113	113	125	123	128	134	134	117
2011 ...	135	153	139	143	137	137	136	155	154	152	153	146	145
2012 ...	149	152	149	150	140	128	126						142
Year	Tobacco												
	January	February	March	April	May	June	July	August	September	October	November	December	Average ¹
2008 ...	92	92	92	92	92	92	92	92	92	92	92	104	93
2009 ...	104	104	104	104	104	104	104	104	104	104	104	103	104
2010 ...	103	103	103	103	103	103	103	103	103	103	103	99	103
2011 ...	99	99	99	99	99	99	99	99	99	99	99	103	83
2012 ...	103	103	103	103	103	103	103						103
Year	Oilseeds												
	January	February	March	April	May	June	July	August	September	October	November	December	Average ¹
2008 ...	178	210	205	215	217	236	239	228	178	174	173	172	202
2009 ...	179	172	164	175	191	203	192	192	158	161	165	172	177
2010 ...	173	168	167	169	168	168	174	178	149	167	186	199	172
2011 ...	207	228	228	235	237	237	237	239	201	205	215	212	223
2012 ...	214	220	233	245	250	249	278						241
Year	Fruits & nuts												
	January	February	March	April	May	June	July	August	September	October	November	December	Average ¹
2008 ...	152	150	149	137	153	151	152	153	160	155	146	127	149
2009 ...	121	122	123	123	135	146	148	146	158	161	157	140	140
2010 ...	134	143	143	130	146	149	163	170	172	175	182	145	154
2011 ...	147	138	144	146	191	166	185	187	181	182	177	155	167
2012 ...	152	154	163	164	170	182	156						163

See footnote(s) at end of table.

--continued

Prices Received Indexes as a Percent of 1990-1992 Base, Monthly and Annual Average – United States: 2008-2012 (continued)

[Revised historical price indexes for months not shown are available at www.nass.usda.gov. Blank data cells indicate estimation period has not begun]

Year	Commercial vegetables												
	January	February	March	April	May	June	July	August	September	October	November	December	Average ¹
2008 ...	138	118	135	162	154	153	143	144	175	179	155	151	151
2009 ...	173	139	151	176	141	155	135	140	135	167	216	208	161
2010 ...	148	147	210	190	172	152	150	151	149	142	183	155	162
2011 ...	194	272	213	158	170	166	163	136	138	124	159	136	169
2012 ...	119	112	124	138	158	160	150						137
Year	Potatoes & dry beans												
	January	February	March	April	May	June	July	August	September	October	November	December	Average ¹
2008 ...	132	138	139	149	162	178	189	186	157	140	156	163	157
2009 ...	164	156	162	163	160	162	152	149	142	128	130	135	150
2010 ...	135	137	138	146	152	141	141	137	127	123	138	163	140
2011 ...	152	158	181	188	189	196	232	180	157	143	160	168	175
2012 ...	173	174	182	194	186	180	179						181
Year	Other crops												
	January	February	March	April	May	June	July	August	September	October	November	December	Average ¹
2008 ...	122	122	122	122	122	122	123	123	123	123	123	123	123
2009 ...	123	123	123	123	123	123	123	123	124	125	125	125	124
2010 ...	125	125	125	125	125	125	125	125	127	130	130	130	126
2011 ...	131	131	131	131	131	131	131	131	131	132	132	132	131
2012 ...	132	132	132	132	132	132	132						132
Year	Food commodities												
	January	February	March	April	May	June	July	August	September	October	November	December	Average ¹
2008 ...	145	144	144	143	148	155	156	153	152	149	139	133	147
2009 ...	134	122	122	127	126	131	129	125	126	133	136	137	129
2010 ...	134	131	137	135	138	135	140	143	142	147	150	148	140
2011 ...	158	163	168	166	168	171	175	174	167	173	172	169	169
2012 ...	172	167	171	165	166	171	178						170
Year	Livestock and products												
	January	February	March	April	May	June	July	August	September	October	November	December	Average ¹
2008 ...	129	131	129	128	134	137	138	137	133	127	123	119	130
2009 ...	115	109	109	112	113	111	112	109	108	110	115	120	112
2010 ...	121	122	127	128	131	129	132	134	134	134	134	134	130
2011 ...	137	144	152	156	152	153	155	158	152	154	157	157	152
2012 ...	156	158	160	152	151	152	151						154
Year	Meat animals												
	January	February	March	April	May	June	July	August	September	October	November	December	Average ¹
2008 ...	111	115	112	114	123	123	126	130	124	116	109	104	117
2009 ...	106	105	105	110	110	106	107	104	103	103	104	105	106
2010 ...	110	113	120	128	130	124	125	128	128	124	122	127	123
2011 ...	140	143	151	158	151	146	152	153	149	156	158	156	151
2012 ...	163	166	166	162	159	162	158						162
Year	Dairy products												
	January	February	March	April	May	June	July	August	September	October	November	December	Average ¹
2008 ...	157	146	139	139	141	148	149	141	139	136	131	119	140
2009 ...	102	89	90	91	89	87	87	93	100	109	118	126	98
2010 ...	123	121	113	112	115	118	122	128	136	142	137	128	125
2011 ...	128	146	156	150	150	162	167	169	162	153	157	151	154
2012 ...	145	136	132	129	124	124	127						131
Year	Poultry & eggs												
	January	February	March	April	May	June	July	August	September	October	November	December	Average ¹
2008 ...	148	155	158	148	149	154	154	151	149	149	149	148	151
2009 ...	149	141	137	140	142	147	145	133	129	127	137	142	139
2010 ...	150	147	161	146	150	151	155	151	147	152	163	154	152
2011 ...	141	142	150	158	155	155	150	160	150	149	154	162	152
2012 ...	153	161	174	159	163	162	159						162

¹ Simple average required for parity regulations. Weighted 1990-1992 average equals 100. Average is year-to-date for current year.

Prices Received Indexes as a Percent of 1910-1914 Base, Monthly and Annual Average – United States: 2008-2012

[Revised historical price indexes for months not shown are available at www.nass.usda.gov. Blank data cells indicate estimation period has not begun]

Year	All products												
	January	February	March	April	May	June	July	August	September	October	November	December	Average ¹
2008 ...	917	926	929	926	962	1005	1011	990	980	955	899	858	947
2009 ...	882	799	800	820	823	848	829	801	802	852	862	863	832
2010 ...	862	840	869	857	877	861	884	903	912	959	979	969	898
2011 ...	1054	1082	1099	1115	1127	1142	1162	1168	1139	1168	1168	1136	1130
2012 ...	1196	1148	1166	1127	1130	1157	1226						1164
Year	All crops												
	January	February	March	April	May	June	July	August	September	October	November	December	Average ¹
2008 ...	787	814	829	839	857	909	903	878	862	831	784	742	836
2009 ...	797	725	730	747	743	789	746	724	707	752	764	744	747
2010 ...	738	719	745	723	735	717	737	761	761	813	854	844	762
2011 ...	934	991	979	992	1032	1039	1048	1046	1008	1008	1022	981	1007
2012 ...	1050	1019	1041	1027	1033	1058	1156						1055
Year	Food grains												
	January	February	March	April	May	June	July	August	September	October	November	December	Average ¹
2008 ...	787	927	971	954	895	809	765	813	789	736	725	672	820
2009 ...	698	649	638	633	633	616	559	537	509	516	547	548	590
2010 ...	559	556	547	525	502	459	487	575	598	603	630	677	560
2011 ...	696	735	739	774	801	771	747	787	780	750	749	746	756
2012 ...	727	715	720	717	691	710	871						736
Year	Feed grains & hay												
	January	February	March	April	May	June	July	August	September	October	November	December	Average ¹
2008 ...	619	689	713	768	809	824	803	808	779	686	668	640	734
2009 ...	671	604	602	599	612	604	551	527	511	553	560	552	579
2010 ...	564	544	546	527	540	529	539	559	617	660	692	721	587
2011 ...	745	828	820	938	948	933	934	1002	961	888	902	902	900
2012 ...	932	955	967	971	974	958	1076						976
Year	Cotton												
	January	February	March	April	May	June	July	August	September	October	November	December	Average ¹
2008 ...	521	533	533	554	547	542	560	455	517	498	464	451	515
2009 ...	389	349	342	378	380	381	369	419	450	495	504	537	416
2010 ...	515	550	550	565	564	580	580	640	633	654	690	687	601
2011 ...	695	786	714	734	704	705	698	796	791	781	783	749	745
2012 ...	764	782	763	769	716	654	648						728
Year	Tobacco												
	January	February	March	April	May	June	July	August	September	October	November	December	Average ¹
2008 ...	1395	1395	1395	1395	1395	1395	1395	1395	1395	1395	1395	1569	1409
2009 ...	1569	1569	1569	1569	1569	1569	1569	1569	1569	1569	1569	1563	1569
2010 ...	1563	1563	1563	1563	1563	1563	1563	1563	1563	1563	1563	1491	1557
2011 ...	1491	1491	1491	1491	1491	1491	1491	1491	1491	1491	1491	1559	1497
2012 ...	1559	1559	1559	1559	1559	1559	1559						1559
Year	Oilseeds												
	January	February	March	April	May	June	July	August	September	October	November	December	Average ¹
2008 ...	974	1150	1125	1180	1190	1292	1308	1248	975	951	949	943	1107
2009 ...	981	945	899	960	1048	1113	1055	1055	867	884	905	942	971
2010 ...	951	920	918	925	919	923	956	976	816	917	1017	1092	944
2011 ...	1132	1248	1250	1288	1296	1301	1299	1311	1104	1124	1179	1164	1225
2012 ...	1173	1208	1278	1344	1372	1364	1523						1323
Year	Fruits & nuts												
	January	February	March	April	May	June	July	August	September	October	November	December	Average ¹
2008 ...	1062	1047	1040	957	1067	1054	1063	1067	1114	1083	1022	883	1038
2009 ...	846	851	859	856	939	1017	1034	1018	1101	1121	1094	978	976
2010 ...	937	998	1000	911	1022	1043	1140	1190	1199	1221	1268	1014	1079
2011 ...	1023	966	1003	1021	1336	1162	1291	1302	1262	1273	1235	1085	1163
2012 ...	1061	1072	1134	1142	1189	1268	1086						1136

See footnote(s) at end of table.

--continued

Prices Received Indexes as a Percent of 1910-1914 Base, Monthly and Annual Average – United States: 2008-2012 (continued)

[Revised historical price indexes for months not shown are available at www.nass.usda.gov. Blank data cells indicate estimation period has not begun]

Year	Commercial vegetables												
	January	February	March	April	May	June	July	August	September	October	November	December	Average ¹
2008 ...	985	846	962	1157	1100	1091	1022	1030	1248	1278	1109	1078	1076
2009 ...	1239	992	1077	1256	1010	1106	967	1001	963	1196	1544	1489	1153
2010 ...	1060	1054	1501	1357	1226	1087	1069	1079	1061	1018	1311	1106	1161
2011 ...	1384	1946	1523	1128	1213	1183	1162	972	989	888	1134	975	1208
2012 ...	849	803	886	982	1126	1141	1073						980
Year	Potatoes & dry beans												
	January	February	March	April	May	June	July	August	September	October	November	December	Average ¹
2008 ...	667	699	705	756	820	901	957	941	795	710	792	826	797
2009 ...	831	791	819	824	812	821	769	756	718	647	661	682	761
2010 ...	683	696	697	738	768	712	713	694	643	624	699	828	708
2011 ...	770	799	915	955	959	992	1178	910	797	725	810	853	889
2012 ...	875	881	925	981	944	914	908						918
Year	Other crops												
	January	February	March	April	May	June	July	August	September	October	November	December	Average ¹
2008 ...	602	602	602	602	602	602	603	603	607	607	607	607	604
2009 ...	607	607	607	607	607	607	607	607	610	614	614	614	609
2010 ...	614	614	614	614	614	614	614	614	627	640	640	640	622
2011 ...	643	643	643	643	643	643	643	643	644	648	648	648	644
2012 ...	650	650	650	650	650	650	650						650
Year	Livestock and products												
	January	February	March	April	May	June	July	August	September	October	November	December	Average ¹
2008 ...	988	1004	990	978	1026	1048	1059	1053	1021	975	944	911	1000
2009 ...	878	836	832	861	863	854	859	833	831	843	882	917	857
2010 ...	930	937	974	978	1004	987	1008	1024	1028	1024	1030	1026	996
2011 ...	1052	1103	1166	1195	1163	1169	1186	1215	1167	1180	1204	1200	1167
2012 ...	1199	1208	1223	1169	1160	1166	1158						1183
Year	Meat animals												
	January	February	March	April	May	June	July	August	September	October	November	December	Average ¹
2008 ...	1132	1171	1144	1157	1256	1252	1285	1325	1263	1178	1114	1058	1195
2009 ...	1075	1067	1067	1120	1117	1078	1086	1060	1050	1048	1064	1067	1075
2010 ...	1119	1156	1218	1300	1325	1260	1274	1308	1308	1261	1243	1296	1256
2011 ...	1422	1461	1538	1607	1537	1490	1543	1559	1521	1593	1611	1594	1540
2012 ...	1655	1694	1695	1647	1624	1648	1610						1653
Year	Dairy products												
	January	February	March	April	May	June	July	August	September	October	November	December	Average ¹
2008 ...	1261	1175	1114	1114	1132	1188	1194	1132	1120	1095	1052	954	1128
2009 ...	818	714	720	732	714	695	695	745	800	880	948	1015	790
2010 ...	991	972	911	898	923	948	978	1028	1089	1138	1101	1028	1000
2011 ...	1028	1175	1255	1206	1206	1298	1341	1360	1298	1231	1261	1212	1239
2012 ...	1169	1089	1058	1034	997	997	1021						1052
Year	Poultry & eggs												
	January	February	March	April	May	June	July	August	September	October	November	December	Average ¹
2008 ...	417	435	445	415	418	433	431	423	417	417	418	416	424
2009 ...	419	395	384	394	399	412	407	372	362	357	384	400	390
2010 ...	422	413	452	409	420	424	434	424	412	426	457	432	427
2011 ...	395	399	421	444	435	436	421	450	420	418	434	454	427
2012 ...	430	452	490	447	457	454	445						454

¹ Simple average required for parity regulations. Weighted 1910-1914 average equals 100. Average is year-to-date for current year.

Reliability of Prices Received Estimates

Definition: Prices received represent sales from producers to first buyers. They include all grades and qualities. The average commodity price from the survey multiplied by the total quantity marketed theoretically should give the total cash receipts for the commodity.

Survey procedures: Primary sales data used to determine grain prices were obtained from probability samples of about 1900 mills and elevators. These procedures ensure that virtually all grain moving into commercial channels has a chance of being included in the survey. Generally, States surveyed account for 90 percent or more of total United States production. Livestock prices are obtained from packers, stockyards, auctions, dealers, and market check data from AMS-USDA, private marketing organizations, and state commodity groups and agencies. Inter-farm sales of grain and livestock are not included since they represent very small percentages of the total marketings. Grain marketed for seed is also excluded. Fruit and vegetable prices are obtained from sample surveys and market check data from AMS-USDA, private marketing organizations, state agencies, and universities.

Summary and estimation procedures: Survey quantities sold are expanded by strata to state levels and used to weight average strata prices to a state average. State prices are then weighted to a United States price based on expanded marketings. Recommendations are prepared by the State Field Offices and reviewed by the Agricultural Statistics Board in Washington, D.C. State recommendations are reviewed for reasonableness with survey data, other States, and recent historic estimates.

Revisions: For most items, the current month's preliminary price represents a 3-5 day period around the 15th of the month. Previous month's prices represent actual dollars received for quantities sold during the entire month. Revisions are published in monthly issues of Agricultural Prices.

Reliability: United States price estimates based on probability surveys generally have a sampling error of less than one percent for the major commodities such as corn, wheat, soybeans, cotton, and rice. Current methods of summarization for non-probability commodities are not designed directly to calculate sampling errors. However, analytical measures approximate the United States relative sampling errors at around five percent. Any nonsampling errors are attributed to such things as the inability to obtain correct information, differences in interpreting questions or definitions, mistakes in coding or processing the data, etc. Efforts are made at each step in the survey process to minimize these nonsampling errors.

Prices Paid by Farmers

The July Index of Prices Paid for Commodities and Services, Interest, Taxes, and Farm Wage Rates (PPITW) at 215 (1990-1992=100) is up 0.5 percent from June 2012 and 5.4 percent from July 2011.

Production index: The July index, at 229, increased 0.4 percent from last month and 6.0 percent from last year. Higher prices in July for feed grains, concentrates, nitrogen, and LP gas offset lower prices for feeder cattle, feeder pigs, diesel, and potash & phosphate.

Feed: The July index, at 267, increased 4.3 percent from June and 16 percent from last July. Since June, higher prices for feed grains, concentrates, hay & forages, and complete feeds more than offset lower prices for supplements.

Livestock and poultry: The July index, at 153, decreased 9.5 percent from last month but increased 0.7 percent from last year. Since June, prices for feeder cattle, feeder pigs, and milk cows are lower. The July feeder cattle price, at \$138.40 per cwt, is down \$12.50 per cwt from the June price. July feeder pigs averaged \$71.00 per cwt, down \$52.00 per cwt from June.

Fertilizer: The July index, at 354, is up 1.4 percent from June and 6.3 percent above July a year ago. Since June, higher prices for nitrogen and mixed fertilizer offset lower prices for potash & phosphate.

Chemicals: The July index, at 157, increased 1.3 percent from June and 9.0 percent from last July. Compared with last month, prices for herbicides, insecticides, and fungicides/other are higher.

Fuels: The July index, at 333, is down 0.6 percent from a month earlier and 10 percent below July 2011. Compared with last month, prices are lower for diesel and gasoline but higher for LP gas.

Machinery: The July index, at 259, increased 0.4 percent from June and is 6.6 percent above last July. Compared with last month, prices for other machinery are higher.

Consumer price index: The June 2012 Consumer Price Index, as issued by the Bureau of Labor Statistics, for all urban consumers (CPI-U) decreased 0.1 percent before seasonal adjustment to a level of 229.478 (1982-1984=100). The May index is 229.815. For the 12 month period ending in June, the overall index increased 1.7 percent.

Prices Paid Indexes and Related Parity Ratios – United States: July 2012 with Comparisons

[Revised historical price indexes for months not shown are available at www.nass.usda.gov]

Indexes and ratios	1910-1914 Base			1990-1992 Base		
	July 2011	June 2012	July 2012	July 2011	June 2012	July 2012
	(percent)	(percent)	(percent)	(percent)	(percent)	(percent)
Prices paid by farmers for commodities, services, interest, taxes, and wage rates (PPITW)	2718	2854	2861	204	214	215
Production	2100	2213	2221	216	228	229
Feed	1126	1248	1305	231	256	267
Livestock and poultry	1939	2165	1958	152	169	153
Seeds	3327	3581	3581	336	362	362
Fertilizer	1220	1280	1296	333	349	354
Chemicals	891	956	970	144	155	157
Fuels	2863	2584	2570	371	335	333
Supplies and repairs	1187	1212	1213	167	171	171
Autos and trucks	3084	3132	3132	116	118	118
Machinery	6108	6473	6496	243	258	259
Building materials	2347	2388	2387	173	176	176
Services and rent	2132	2190	2199	(NA)	(NA)	(NA)
Services	(NA)	(NA)	(NA)	165	168	169
Rent	(NA)	(NA)	(NA)	205	212	212
Interest ¹	3381	3635	3635	135	145	145
Taxes ²	5935	6225	6225	222	232	232
Wage rates	7062	7373	7373	189	197	197
Production, interest, taxes, and wage rates (PITW)	2832	2986	2996	211	222	223
Family living-CPI ³	2146	2180	2176	168	170	170
Ratio (received/paid)	(NA)	(NA)	(NA)	90	85	90
Parity ratio ⁴	43	41	43	(NA)	(NA)	(NA)
Parity ratio adjusted ⁵	44	42	44	(NA)	(NA)	(NA)
PPITW adjusted for productivity ⁶	1456	1496	1497	(NA)	(NA)	(NA)
Crop sector (PPITW)	(NA)	(NA)	(NA)	214	222	222
Livestock sector (PPITW)	(NA)	(NA)	(NA)	194	206	207
Farm sector (production)	(NA)	(NA)	(NA)	221	245	246
Non-farm sector (production)	(NA)	(NA)	(NA)	214	219	220

(NA) Not available.

¹ Interest per acre on farm real estate debt and interest rate on farm non-real estate debt.

² Farm real estate taxes payable per acre.

³ Bureau of Labor Statistics, Consumer Price Index for all urban consumers (CPI-U), for the previous month converted by the USDA.

⁴ Ratio of index of prices received to PPITW (1910-1914=100).

⁵ Based on estimated cash receipts, from marketings and government payments, the preliminary adjustment factor is 1.044 for 2012 and the revised factor is 1.041 for 2011.

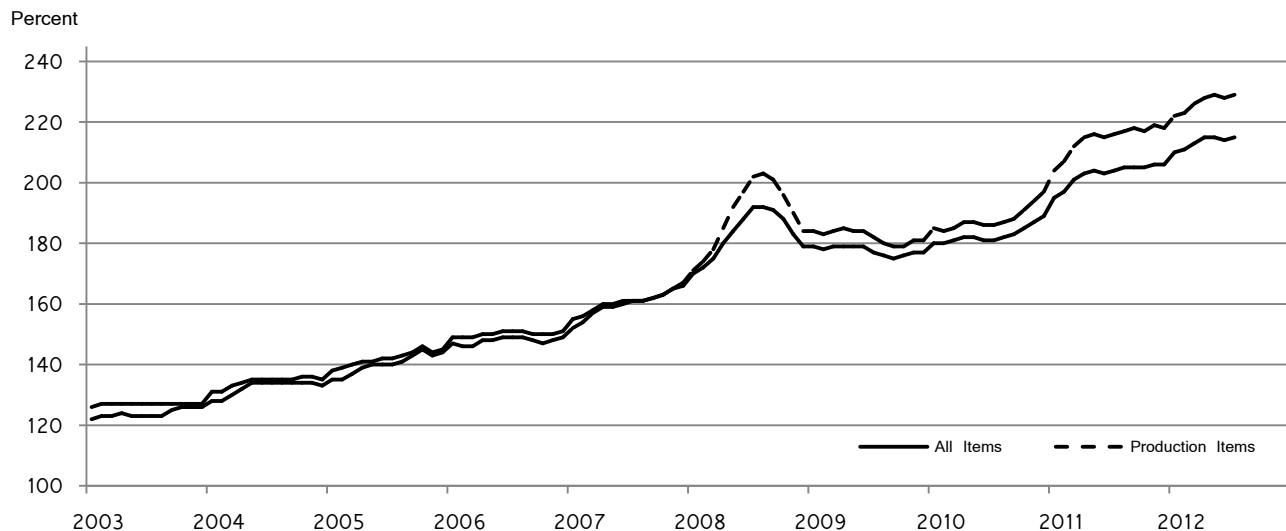
⁶ PPITW is adjusted based on productivity trend for the prior 15 years.

Prices Paid Indexes and Annual Weights for Input Components and Sub-Components – United States: July 2012 with Comparisons

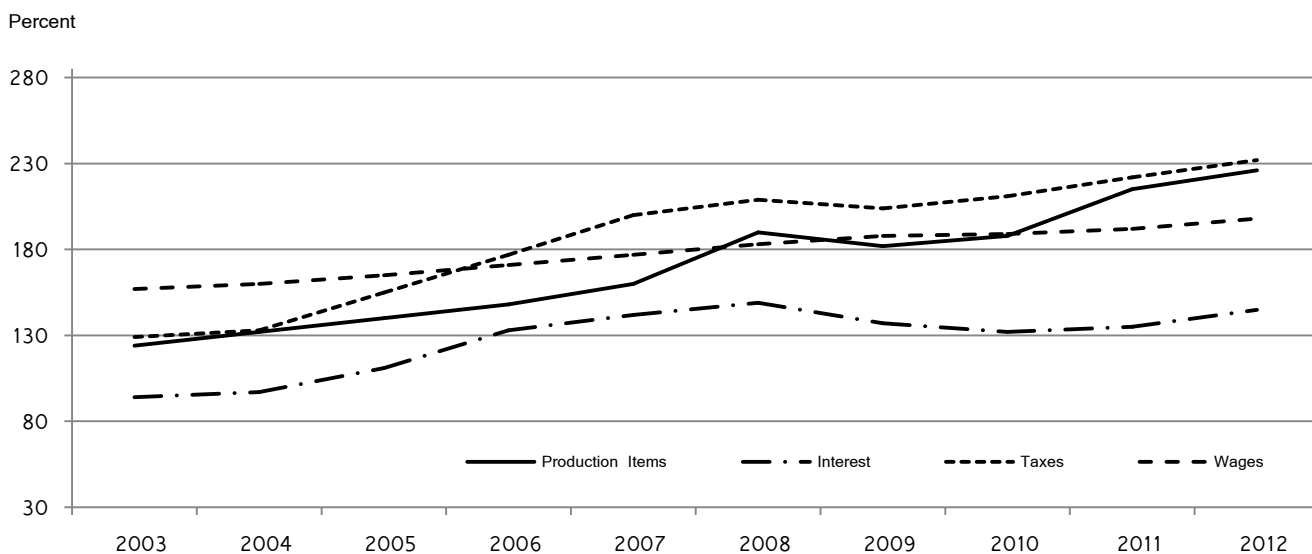
[Revised historical price indexes for months not shown are available at www.nass.usda.gov. Relative weights are a five year moving average]

	Relative weights		Indexes (1990-1992=100)		
	2011	2012	July 2011	June 2012	July 2012
	(percent)	(percent)	(percent)	(percent)	(percent)
Production items	70.6	71.1	216	228	229
Feed	12.2	12.7	231	256	267
Feed grains	1.7	1.8	268	268	311
Complete feeds	6.0	6.2	229	261	261
Hay and forages	1.5	1.6	213	231	235
Concentrates	1.9	2.0	212	257	290
Supplements	1.0	1.1	240	240	237
Livestock and poultry	8.5	8.3	152	169	153
Feeder cattle	6.6	6.5	156	178	163
Feeder pigs	0.7	0.7	124	134	77
Milk cow replacements	0.7	0.7	131	128	126
Poultry	0.5	0.5	158	158	158
Seeds	4.1	4.3	336	362	362
Field crops	3.7	3.9	356	381	381
Grasses and legumes	0.4	0.4	145	178	178
Fertilizer	5.5	5.7	333	349	354
Mixed fertilizer	2.4	2.5	310	315	318
Nitrogen	2.3	2.4	344	376	390
Potash and phosphate	0.8	0.8	370	374	358
Chemicals	3.3	3.2	144	155	157
Herbicides	2.1	2.0	129	139	141
Insecticides	0.7	0.7	167	175	178
Fungicides and other	0.5	0.5	173	192	195
Fuels	4.0	4.0	371	335	333
Diesel	2.5	2.5	402	386	380
Gasoline	0.8	0.8	316	307	297
LP gas	0.7	0.7	325	182	205
Supplies and repairs	4.6	4.6	167	171	171
Supplies	1.5	1.5	163	166	167
Repairs	3.0	3.0	169	173	173
Autos and trucks	1.4	1.2	116	118	118
Autos	0.2	0.2	115	116	115
Trucks	1.2	1.1	116	118	118
Machinery	4.3	4.3	243	258	259
Tractors	0.9	0.9	204	209	209
Self-propelled	1.7	1.7	255	275	275
Other machinery	1.6	1.6	254	269	271
Building materials	4.4	4.2	173	176	176
Services	12.1	12.0	165	168	169
Custom rates	1.2	1.2	148	148	148
Other services	10.9	10.7	167	170	172
Rent	6.3	6.6	205	212	212
Cash	3.4	3.5	262	270	270
Share	2.9	3.0	139	145	145
Interest	3.5	3.4	135	145	145
Taxes	3.1	3.1	222	232	232
Wage rates	7.4	7.2	189	197	197
Family living-CPI	15.4	15.3	168	170	170

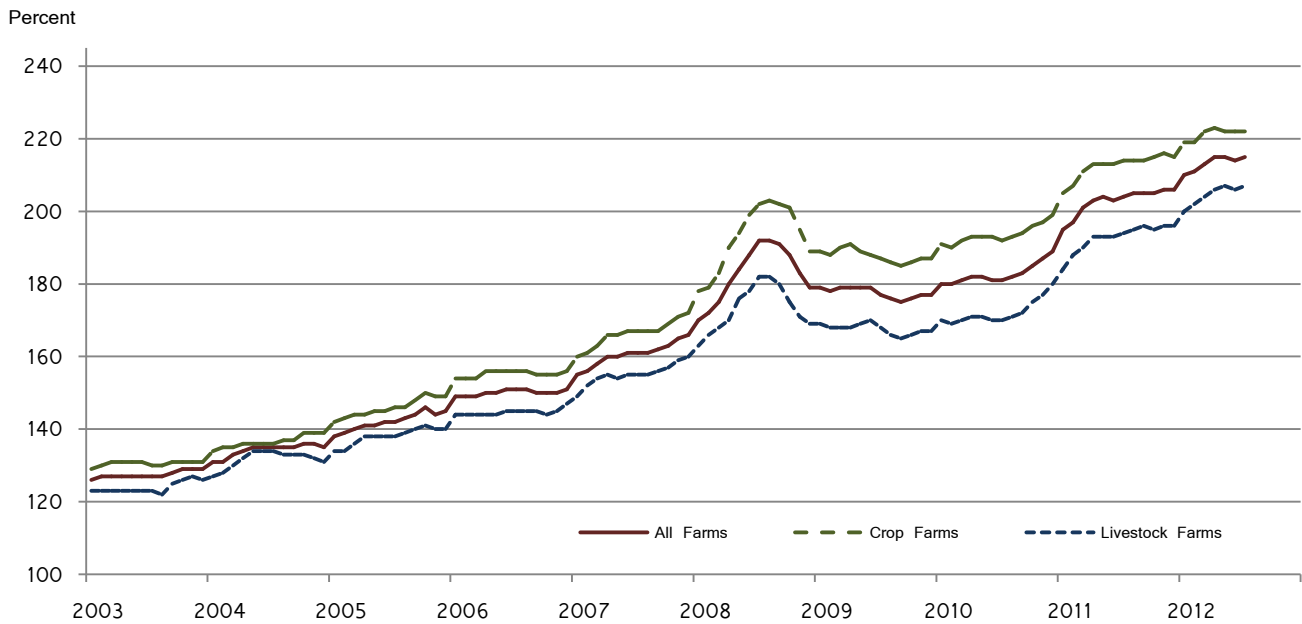
**Paid Indexes by Month,
All Items and Production Items –
United States: 1990–1992=100**



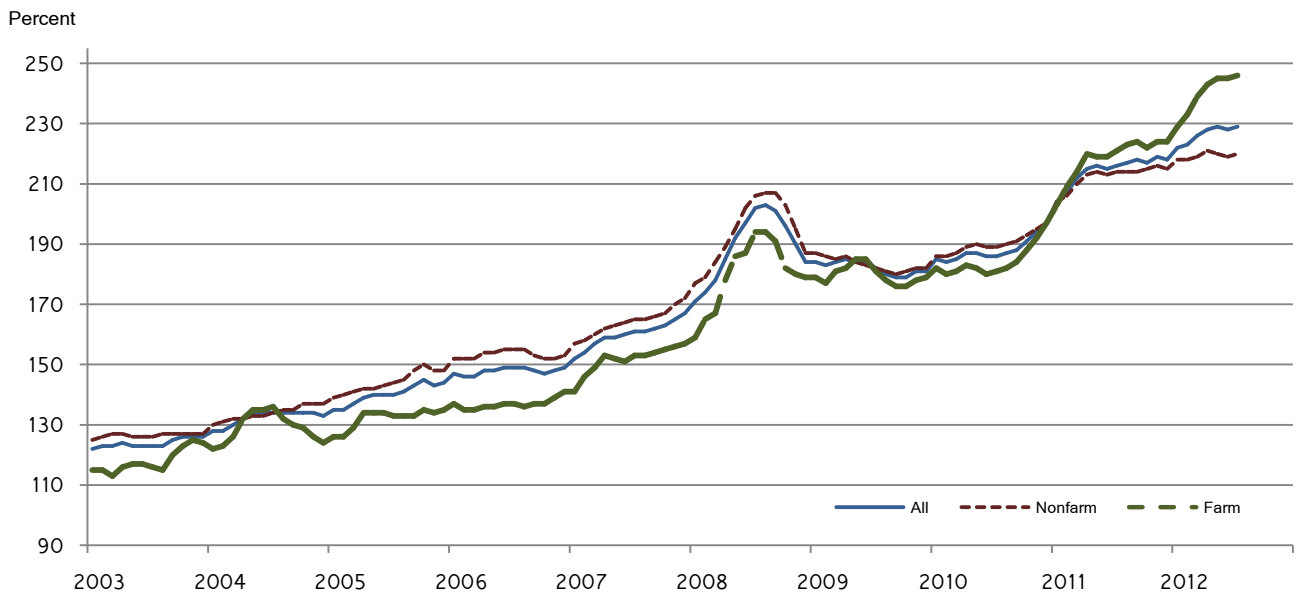
**Paid Indexes, Annual Averages,
Production Items, Interest, Taxes, and Wages –
United States: 1990–1992=100**



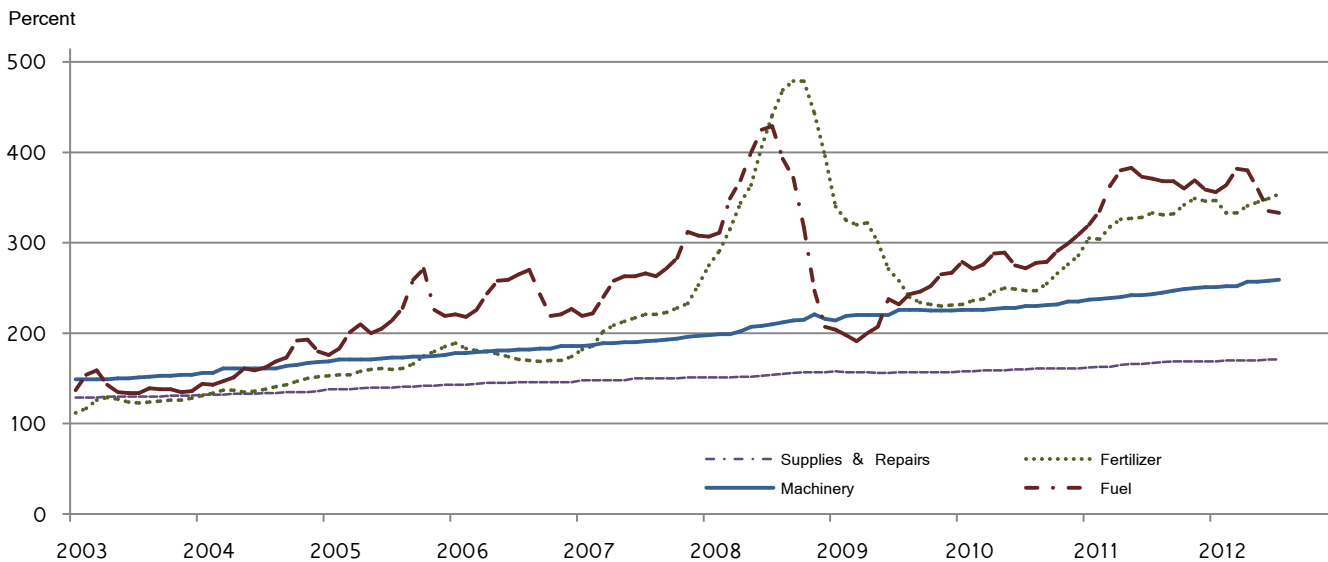
**Paid Indexes by Farm Type and Month,
All Items – United States: 1990–1992=100**



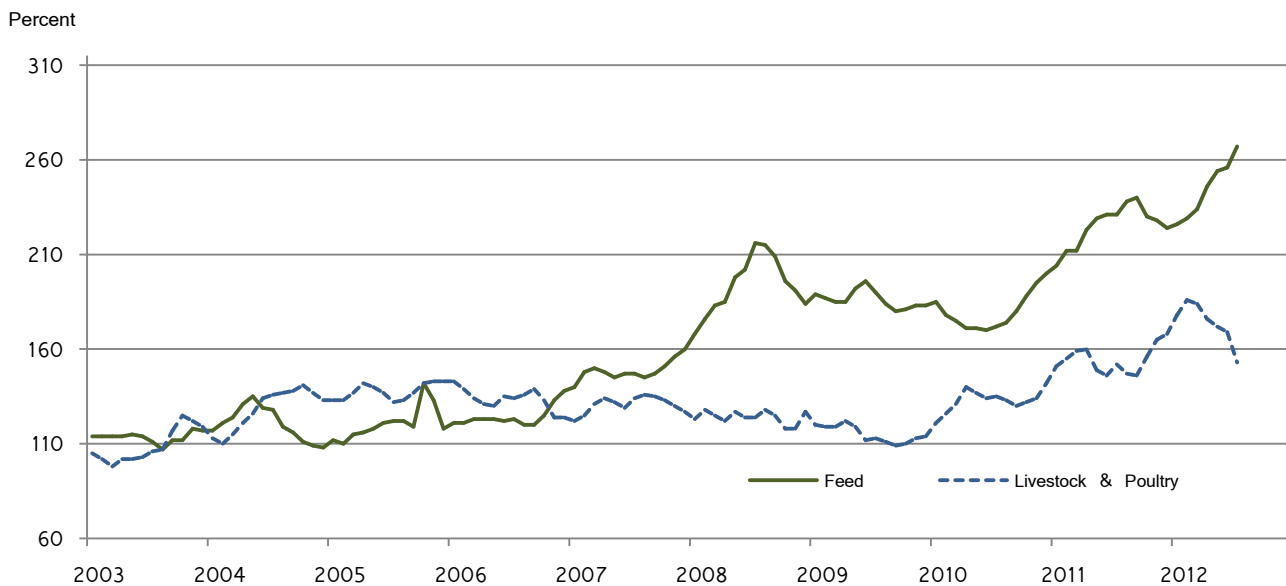
**Paid Indexes by Origin and Month,
All Production Items –
United States: 1990–1992=100**



**Paid Indexes by Non-Farm Sector and Month,
Supplies & Repairs, Fertilizer, Machinery, and
Fuel – United States: 1990–1992=100**



**Paid Indexes by Month,
Feed and Livestock & Poultry –
United States: 1990–1992=100**



Feed Price Ratios – United States: July 2012 with Comparisons

Feed price ratio ¹	July 2011	June 2012	Preliminary July 2012
Broiler-feed: pounds of broiler grower feed equal in value to 1 pound of broiler, live weight ²	3.0	3.1	2.6
Market egg feed: pounds of laying feed equal in value to 1 dozen eggs ³	4.9	4.8	4.7
Hog-corn: bushels of corn equal in value to 100 pounds of hog, live weight	11.3	11.0	10.0
Milk-feed: pounds of 16% mixed dairy feed equal in value to 1 pound of whole milk ⁴	1.91	1.38	1.29
Steer and heifer-corn: bushels of corn equal in value to 100 pounds of steer & heifers, live weight	18.2	19.5	16.2
Turkey-feed: pounds of turkey grower equal in value to 1 pound of turkey, live weight ⁵	4.7	5.1	4.3

¹ Effective January 1995, prices of commercial prepared feeds are based on current United States prices received for corn, soybeans, alfalfa hay, and all wheat.

² The price of commercial prepared broiler feed is based on current United States prices received for corn and soybeans. The modeled feed uses 58 percent corn and 42 percent soybeans.

³ The price of commercial prepared layer feed is based on current United States prices received for corn and soybeans. The modeled feed uses 75 percent corn and 25 percent soybeans.

⁴ The price of commercial prepared dairy feed is based on current United States prices received for corn, soybeans, and alfalfa hay. The modeled feed uses 51 percent corn, 41 percent alfalfa hay, and 8 percent soybeans.

⁵ The price of commercial prepared turkey feed is based on current United States prices received for corn, soybeans, and wheat. The modeled feed uses 51 percent corn, 28 percent soybeans, and 21 percent wheat.

Prices Received Used to Calculate Feed Price Ratios – United States: July 2012 with Comparisons

[Price data source for livestock and poultry commodities is United States Department of Agriculture's Agricultural Marketing Service]

Item	July 2011	June 2012	Preliminary July 2012
	(dollars)	(dollars)	(dollars)
Broilers, livepound	0.470	0.510	0.490
Eggs, marketdozen	0.684	0.688	0.763
Hogs, allcwt	71.70	70.20	73.80
Milk, allcwt	21.80	16.20	16.60
Steers and heiferscwt	115.00	124.00	119.00
Turkeys, livepound	0.675	0.739	0.724
Cornbushel	6.33	6.37	7.36
Hay, alfalfaton	189.00	201.00	198.00
Soybeansbushel	13.20	13.90	15.60
Wheat, allbushel	7.10	6.70	8.31

Prices Paid for Feeder Livestock – United States: July 2012 with Comparisons

[Price data source is United States Department of Agriculture's Agricultural Marketing Service]

Item	July 2011	June 2012	Preliminary July 2012
	(dollars)	(dollars)	(dollars)
Feeder cattle and calvescwt	132.20	150.90	138.40
Feeder pigscwt	114.00	123.00	71.00

Prices Paid Indexes as a Percent of 1990-1992 Base, Monthly and Annual Average – United States: 2008-2012

[Revised historical price indexes for months not shown are available at www.nass.usda.gov. Blank data cells indicate estimation period has not begun]

Year	Commodities, services, interest, taxes, and wage rates (PPITW)												
	January	February	March	April	May	June	July	August	September	October	November	December	Average ¹
2008 ...	170	172	175	180	184	188	192	192	191	188	183	179	183
2009 ...	179	178	179	179	179	179	177	176	175	176	177	177	178
2010 ...	180	180	181	182	182	181	181	182	183	185	187	189	183
2011 ...	195	197	201	203	204	203	204	205	205	205	206	206	203
2012 ...	210	211	213	215	215	214	215						213
Year	Items used for production, interest, taxes, and wage rates (PITW)												
	January	February	March	April	May	June	July	August	September	October	November	December	Average ¹
2008 ...	173	175	179	184	190	194	198	198	197	193	188	184	188
2009 ...	183	182	183	183	183	183	181	179	178	179	180	181	181
2010 ...	184	183	184	185	186	185	185	185	186	189	192	194	187
2011 ...	201	203	207	210	210	210	211	211	212	212	213	213	209
2012 ...	217	218	221	223	223	222	223						221
Year	Items used for production												
	January	February	March	April	May	June	July	August	September	October	November	December	Average ¹
2008 ...	171	174	178	185	192	197	202	203	201	196	190	184	190
2009 ...	184	183	184	185	184	184	182	180	179	179	181	181	182
2010 ...	185	184	185	187	187	186	186	187	188	191	194	197	188
2011 ...	204	207	212	215	216	215	216	217	218	217	219	218	215
2012 ...	222	223	226	228	229	228	229						226
Year	Feed												
	January	February	March	April	May	June	July	August	September	October	November	December	Average ¹
2008 ...	168	176	183	185	198	202	216	215	209	196	191	184	194
2009 ...	189	187	185	185	192	196	190	184	180	181	183	183	186
2010 ...	185	178	175	171	171	170	172	174	180	188	195	200	180
2011 ...	204	212	212	223	229	231	231	238	240	230	228	224	225
2012 ...	226	229	234	246	254	256	267						245
Year	Livestock & poultry												
	January	February	March	April	May	June	July	August	September	October	November	December	Average ¹
2008 ...	123	128	125	122	127	124	124	128	125	118	118	127	124
2009 ...	120	119	119	122	119	112	113	111	109	110	113	114	115
2010 ...	121	126	131	140	137	134	135	133	130	132	134	142	133
2011 ...	151	155	159	160	149	146	152	147	146	156	165	168	155
2012 ...	178	186	184	176	172	169	153						174
Year	Seeds												
	January	February	March	April	May	June	July	August	September	October	November	December	Average ¹
2008 ...	211	211	211	275	275	275	275	275	275	275	275	275	259
2009 ...	275	275	304	304	304	304	304	304	304	304	304	304	299
2010 ...	304	304	311	311	311	311	311	311	311	311	311	311	310
2011 ...	311	311	336	336	336	336	336	336	336	336	336	336	332
2012 ...	336	336	362	362	362	362	362						355
Year	Fertilizer												
	January	February	March	April	May	June	July	August	September	October	November	December	Average ¹
2008 ...	275	291	315	344	364	406	441	469	479	479	443	396	392
2009 ...	340	325	320	322	301	271	258	240	234	232	230	231	275
2010 ...	232	236	238	246	250	249	247	247	255	266	276	286	252
2011 ...	305	304	318	326	327	328	333	331	332	342	349	346	328
2012 ...	347	333	333	341	345	349	354						343
Year	Chemicals												
	January	February	March	April	May	June	July	August	September	October	November	December	Average ¹
2008 ...	133	133	134	135	136	138	140	141	143	144	146	145	139
2009 ...	142	148	150	152	153	148	149	145	146	148	153	154	149
2010 ...	143	143	143	144	144	145	145	146	146	146	144	144	144
2011 ...	144	145	145	144	144	143	144	145	146	148	147	148	145
2012 ...	149	152	152	149	152	155	157						152

See footnote(s) at end of table.

--continued

Prices Paid Indexes as a Percent of 1990-1992 Base, Monthly and Annual Average – United States: 2008-2012 (continued)

[Revised historical price indexes for months not shown are available at www.nass.usda.gov. Blank data cells indicate estimation period has not begun]

Year	Fuels												
	January	February	March	April	May	June	July	August	September	October	November	December	Average ¹
2008 ...	307	311	349	369	400	425	429	393	372	317	247	207	344
2009 ...	204	198	191	200	207	238	232	243	246	252	265	267	229
2010 ...	279	271	276	288	289	275	272	278	279	291	299	309	284
2011 ...	320	335	363	380	383	373	371	368	368	360	369	359	362
2012 ...	356	364	382	380	359	335	333						358
Year	Supplies & repairs												
	January	February	March	April	May	June	July	August	September	October	November	December	Average ¹
2008 ...	151	151	151	152	152	153	154	155	156	157	157	157	154
2009 ...	158	157	157	157	156	156	157	157	157	157	157	157	157
2010 ...	158	158	159	159	159	160	160	161	161	161	161	161	160
2011 ...	162	163	163	165	166	166	167	168	169	169	169	169	166
2012 ...	169	170	170	170	170	171	171						170
Year	Autos & trucks												
	January	February	March	April	May	June	July	August	September	October	November	December	Average ¹
2008 ...	111	111	111	110	109	109	108	107	106	106	106	106	108
2009 ...	107	108	109	109	109	110	110	109	109	111	112	113	110
2010 ...	113	113	113	113	112	112	112	112	112	112	113	113	113
2011 ...	114	115	115	116	116	116	116	116	116	116	116	116	116
2012 ...	117	118	118	118	118	118	118						118
Year	Machinery												
	January	February	March	April	May	June	July	August	September	October	November	December	Average ¹
2008 ...	198	199	199	202	207	208	210	212	214	215	221	216	209
2009 ...	214	219	220	220	220	220	226	226	226	225	225	225	222
2010 ...	226	226	226	227	228	228	230	230	231	232	235	235	230
2011 ...	237	238	239	240	242	242	243	245	247	249	250	251	244
2012 ...	251	252	252	257	257	258	259						255
Year	Building materials												
	January	February	March	April	May	June	July	August	September	October	November	December	Average ¹
2008 ...	156	157	159	161	164	166	169	171	172	171	169	167	165
2009 ...	167	165	164	163	163	163	162	162	163	162	162	163	163
2010 ...	163	164	165	166	167	166	166	166	166	166	166	167	166
2011 ...	168	169	170	171	171	172	173	173	173	172	172	172	171
2012 ...	173	174	175	176	176	176	176						175
Year	Services												
	January	February	March	April	May	June	July	August	September	October	November	December	Average ¹
2008 ...	143	143	144	144	145	147	148	148	148	148	147	147	146
2009 ...	157	157	156	156	156	158	156	156	156	156	156	156	156
2010 ...	160	159	160	160	160	162	162	162	162	161	161	161	161
2011 ...	163	163	164	163	164	165	165	165	165	164	164	164	164
2012 ...	166	166	166	166	167	168	169						167
Year	Rent												
	January	February	March	April	May	June	July	August	September	October	November	December	Average ¹
2008 ...	165	165	165	165	165	165	165	165	165	165	165	165	165
2009 ...	184	184	184	184	184	184	184	184	184	184	184	184	184
2010 ...	190	190	190	190	190	190	190	190	190	190	190	190	190
2011 ...	205	205	205	205	205	205	205	205	205	205	205	205	205
2012 ...	212	212	212	212	212	212	212						212
Year	Ratio												
	January	February	March	April	May	June	July	August	September	October	November	December	Average ¹
2008 ...	85	85	83	81	83	84	83	81	81	80	78	75	82
2009 ...	78	71	70	72	73	75	74	72	72	76	77	77	74
2010 ...	76	73	76	74	76	75	77	78	79	82	82	81	77
2011 ...	85	87	86	87	87	89	90	90	88	90	89	87	88
2012 ...	90	86	86	83	83	85	90						86

See footnote(s) at end of table.

--continued

Prices Paid Indexes as a Percent of 1990-1992 Base, Monthly and Annual Average – United States: 2008-2012 (continued)

[Revised historical price indexes for months not shown are available at www.nass.usda.gov. Blank data cells indicate estimation period has not begun]

Year	Interest												
	January	February	March	April	May	June	July	August	September	October	November	December	Average ¹
2008 ...	149	149	149	149	149	149	149	149	149	149	149	149	149
2009 ...	137	137	137	137	137	137	137	137	137	137	137	137	137
2010 ...	132	132	132	132	132	132	132	132	132	132	132	132	132
2011 ...	135	135	135	135	135	135	135	135	135	135	135	135	135
2012 ...	145	145	145	145	145	145	145	145	145	145	145	145	145
Year	Taxes												
	January	February	March	April	May	June	July	August	September	October	November	December	Average ¹
2008 ...	209	209	209	209	209	209	209	209	209	209	209	209	209
2009 ...	204	204	204	204	204	204	204	204	204	204	204	204	204
2010 ...	211	211	211	211	211	211	211	211	211	211	211	211	211
2011 ...	222	222	222	222	222	222	222	222	222	222	222	222	222
2012 ...	232	232	232	232	232	232	232	232	232	232	232	232	232
Year	Wage rates												
	January	February	March	April	May	June	July	August	September	October	November	December	Average ¹
2008 ...	187	187	187	183	183	183	179	179	179	185	185	185	183
2009 ...	189	189	189	188	188	188	184	184	184	189	189	189	188
2010 ...	191	191	191	187	187	187	186	186	186	192	192	192	189
2011 ...	195	195	195	189	189	189	189	189	189	193	193	193	192
2012 ...	199	199	199	197	197	197	197	197	197	197	197	197	198
Year	Family living												
	January	February	March	April	May	June	July	August	September	October	November	December	Average ¹
2008 ...	157	157	158	159	161	162	163	163	162	161	158	156	160
2009 ...	157	157	158	158	159	160	160	160	160	160	160	160	159
2010 ...	161	161	161	162	162	162	162	162	162	162	162	163	162
2011 ...	163	164	166	167	168	167	168	168	168	168	168	167	167
2012 ...	168	169	170	171	170	170	170	170	170	170	170	170	170

See footnote(s) at end of table.

--continued

Prices Paid Indexes as a Percent of 1990-1992 Base, Monthly and Annual Average – United States: 2008-2012 (continued)

[Revised historical price indexes for months not shown are available at www.nass.usda.gov. Blank data cells indicate estimation period has not begun]

Year	Production items with farm origin ²												
	January	February	March	April	May	June	July	August	September	October	November	December	Average ¹
2008 ...	159	165	167	178	186	187	194	194	191	182	180	179	180
2009 ...	179	177	181	182	185	185	181	178	176	176	178	179	180
2010 ...	182	180	181	183	182	180	181	182	184	188	192	197	184
2011 ...	203	209	214	220	219	219	221	223	224	222	224	224	219
2012 ...	229	233	239	243	245	245	246						240
Year	Production items with non-farm origin ³												
	January	February	March	April	May	June	July	August	September	October	November	December	Average ¹
2008 ...	177	179	184	189	195	202	206	207	207	203	195	187	194
2009 ...	187	186	185	186	184	183	182	181	180	181	182	182	183
2010 ...	186	186	187	189	190	189	189	190	191	193	195	197	190
2011 ...	204	206	210	213	214	213	214	214	214	215	216	215	212
2012 ...	218	218	219	221	220	219	220						219
Year	Crop sector (PPITW)												
	January	February	March	April	May	June	July	August	September	October	November	December	Average ¹
2008 ...	178	179	183	190	194	199	202	203	202	201	195	189	193
2009 ...	189	188	190	191	189	188	187	186	185	186	187	187	188
2010 ...	191	190	192	193	193	193	192	193	194	196	197	199	194
2011 ...	205	207	211	213	213	213	214	214	214	215	216	215	213
2012 ...	219	219	222	223	222	222	222						221
Year	Livestock Sector (PPITW)												
	January	February	March	April	May	June	July	August	September	October	November	December	Average ¹
2008 ...	163	166	168	170	176	178	182	182	180	175	171	169	173
2009 ...	169	168	168	168	169	170	168	166	165	166	167	167	168
2010 ...	170	169	170	171	171	170	170	171	172	175	177	180	172
2011 ...	184	188	190	193	193	193	194	195	196	195	196	196	193
2012 ...	200	202	204	206	207	206	207						205

¹ Simple average and is year-to-date for current year.

² Feed, livestock & poultry purchases, and seed.

³ Fertilizer, agricultural chemicals, fuels, supplies & repairs, autos & trucks, machinery, building materials, and services & rent.

Prices Paid Index Sub-Components as a Percent of 1990-1992 Base, Monthly and Annual Average – United States: 2008-2012

[Revised historical price indexes for months not shown are available at www.nass.usda.gov. Blank data cells indicate estimation period has not begun]

Year	Feed grains												
	January	February	March	April	May	June	July	August	September	October	November	December	Average ¹
2008 ...	174	198	206	223	227	237	226	225	215	189	183	173	206
2009 ...	183	163	164	164	169	171	154	145	142	154	156	155	160
2010 ...	157	152	153	146	150	146	151	157	176	186	197	208	165
2011 ...	215	245	240	273	271	270	268	289	271	249	253	253	258
2012 ...	261	269	272	271	270	268	268	311					275
Year	Complete feeds												
	January	February	March	April	May	June	July	August	September	October	November	December	Average ¹
2008 ...	161	168	177	178	188	195	215	215	213	204	196	184	191
2009 ...	188	193	193	191	200	206	206	199	196	191	191	191	195
2010 ...	195	187	183	178	178	177	178	179	182	189	198	202	186
2011 ...	208	212	217	222	227	231	229	234	239	231	229	224	225
2012 ...	226	226	230	253	260	261	261						245
Year	Hay & forages												
	January	February	March	April	May	June	July	August	September	October	November	December	Average ¹
2008 ...	169	172	178	180	212	206	209	207	204	199	192	180	192
2009 ...	177	171	170	166	164	153	146	139	141	141	141	140	154
2010 ...	142	139	142	143	147	147	148	146	148	147	147	149	145
2011 ...	150	155	166	184	209	203	213	220	224	230	222	225	200
2012 ...	220	227	234	239	249	231	235						234
Year	Concentrates												
	January	February	March	April	May	June	July	August	September	October	November	December	Average ¹
2008 ...	174	175	180	178	199	196	221	216	197	164	178	192	189
2009 ...	190	183	179	186	197	215	199	198	188	190	193	194	193
2010 ...	190	187	183	176	182	184	190	193	187	197	209	208	191
2011 ...	213	214	204	204	207	213	212	211	216	201	192	184	206
2012 ...	194	201	210	216	228	257	290						228
Year	Supplements												
	January	February	March	April	May	June	July	August	September	October	November	December	Average ¹
2008 ...	182	192	188	178	185	193	212	202	205	212	205	202	196
2009 ...	215	222	206	210	219	214	204	208	200	210	225	223	213
2010 ...	230	206	200	204	182	182	180	181	215	225	220	229	205
2011 ...	230	238	225	236	242	240	240	257	268	250	257	251	245
2012 ...	234	232	238	233	244	240	237						237
Year	Feeder Cattle												
	January	February	March	April	May	June	July	August	September	October	November	December	Average ¹
2008 ...	117	123	119	118	124	123	123	126	122	114	110	119	120
2009 ...	112	110	109	116	117	113	116	114	111	109	111	111	112
2010 ...	115	120	125	134	131	129	132	132	127	130	134	141	129
2011 ...	149	153	157	159	151	150	156	151	151	162	171	173	157
2012 ...	182	190	188	182	182	178	163						181
Year	Feeder pigs												
	January	February	March	April	May	June	July	August	September	October	November	December	Average ¹
2008 ...	114	123	122	95	99	73	57	88	90	90	123	145	102
2009 ...	159	156	162	160	109	66	62	49	65	89	107	127	109
2010 ...	160	174	189	209	201	181	169	150	152	148	140	162	170
2011 ...	199	220	221	200	152	121	124	112	108	114	145	172	157
2012 ...	207	223	215	174	138	134	77						167
Year	Milk cow replacements												
	January	February	March	April	May	June	July	August	September	October	November	December	Average ¹
2008 ...	174	174	174	172	172	172	176	176	176	170	170	170	173
2009 ...	145	145	145	123	123	123	113	113	113	110	110	110	123
2010 ...	119	119	119	118	118	118	117	117	117	118	118	118	118
2011 ...	115	115	115	126	126	126	131	131	131	131	131	131	126
2012 ...	129	129	129	128	128	128	126						128

See footnote(s) at end of table.

--continued

Prices Paid Index Sub-Components as a Percent of 1990-1992 Base, Monthly and Annual Average – United States: 2008-2012 (continued)

[Revised historical price indexes for months not shown are available at www.nass.usda.gov. Blank data cells indicate estimation period has not begun]

Year	Poultry												
	January	February	March	April	May	June	July	August	September	October	November	December	Average ¹
2008 ...	145	145	145	145	145	145	145	145	145	145	145	145	145
2009 ...	149	149	149	149	149	149	149	149	149	149	149	149	149
2010 ...	151	151	151	151	151	151	151	151	151	151	151	151	151
2011 ...	158	158	158	158	158	158	158	158	158	158	158	158	158
2012 ...	158	158	158	158	158	158	158	158	158	158	158	158	158
Year	Field crop seeds												
	January	February	March	April	May	June	July	August	September	October	November	December	Average ¹
2008 ...	218	218	218	287	287	287	287	287	287	287	287	287	270
2009 ...	287	287	319	319	319	319	319	319	319	319	319	319	314
2010 ...	319	319	329	329	329	329	329	329	329	329	329	329	327
2011 ...	329	329	356	356	356	356	356	356	356	356	356	356	352
2012 ...	356	356	381	381	381	381	381	381	381	381	381	381	374
Year	Grass & legume seeds												
	January	February	March	April	May	June	July	August	September	October	November	December	Average ¹
2008 ...	142	142	142	157	157	157	157	157	157	157	157	157	154
2009 ...	157	157	161	161	161	161	161	161	161	161	161	161	160
2010 ...	161	161	139	139	139	139	139	139	139	139	139	139	143
2011 ...	139	139	145	145	145	145	145	145	145	145	145	145	144
2012 ...	145	145	178	178	178	178	178	178	178	178	178	178	169
Year	Mixed fertilizer												
	January	February	March	April	May	June	July	August	September	October	November	December	Average ¹
2008 ...	272	288	322	354	362	403	430	440	441	441	416	364	378
2009 ...	337	331	298	293	281	272	260	251	247	241	240	237	274
2010 ...	230	229	225	233	238	241	245	250	256	263	275	284	247
2011 ...	292	305	310	313	310	310	310	308	310	318	321	319	311
2012 ...	319	322	321	312	312	315	318	318	318	318	318	318	317
Year	Nitrogen												
	January	February	March	April	May	June	July	August	September	October	November	December	Average ¹
2008 ...	283	294	310	322	349	375	411	434	447	443	411	396	373
2009 ...	333	276	295	308	291	263	250	219	211	215	215	212	257
2010 ...	220	227	229	242	244	241	231	229	237	255	260	273	241
2011 ...	284	286	311	323	330	337	344	343	337	348	356	355	330
2012 ...	355	327	327	354	364	376	390	390	390	390	390	390	356
Year	Potash & phosphate												
	January	February	March	April	May	June	July	August	September	October	November	December	Average ¹
2008 ...	257	287	311	377	410	511	566	662	693	710	622	497	492
2009 ...	369	453	463	456	394	289	274	271	261	251	247	272	333
2010 ...	275	287	301	304	310	301	298	295	306	308	326	332	304
2011 ...	410	357	361	379	368	362	370	368	387	399	416	407	382
2012 ...	408	386	386	393	391	374	358	358	358	358	358	358	385
Year	Herbicides												
	January	February	March	April	May	June	July	August	September	October	November	December	Average ¹
2008 ...	123	123	124	125	126	129	131	132	134	136	138	138	130
2009 ...	135	141	144	145	145	140	141	137	138	138	142	144	141
2010 ...	133	132	132	133	133	132	133	133	133	132	131	130	132
2011 ...	130	130	130	130	129	129	129	130	131	132	132	133	130
2012 ...	133	137	136	133	137	139	141	141	141	141	141	141	137
Year	Insecticides												
	January	February	March	April	May	June	July	August	September	October	November	December	Average ¹
2008 ...	153	153	154	156	156	157	158	158	158	158	159	157	156
2009 ...	152	157	158	161	163	158	160	157	160	162	168	171	161
2010 ...	159	160	161	163	163	164	165	166	167	166	165	165	164
2011 ...	166	167	167	167	166	166	167	167	169	171	171	172	168
2012 ...	172	177	176	168	173	175	178	178	178	178	178	178	174

See footnote(s) at end of table.

--continued

Prices Paid Index Sub-Components as a Percent of 1990-1992 Base, Monthly and Annual Average – United States: 2008-2012 (continued)

[Revised historical price indexes for months not shown are available at www.nass.usda.gov. Blank data cells indicate estimation period has not begun]

Year	Fungicides & other												
	January	February	March	April	May	June	July	August	September	October	November	December	Average ¹
2008 ...	141	142	143	145	146	149	152	153	155	157	160	159	150
2009 ...	156	163	165	167	169	164	166	162	164	166	173	175	166
2010 ...	163	164	165	166	167	168	170	170	172	172	171	171	168
2011 ...	172	174	174	174	173	172	173	174	175	177	177	178	174
2012 ...	179	183	182	185	190	192	195						187
Year	Diesel												
	January	February	March	April	May	June	July	August	September	October	November	December	Average ¹
2008 ...	332	339	391	413	443	465	464	421	390	344	274	231	376
2009 ...	215	204	192	206	208	237	240	250	251	257	271	268	233
2010 ...	279	275	290	305	307	296	293	299	298	310	320	331	300
2011 ...	347	369	403	419	417	405	402	397	395	390	407	397	396
2012 ...	393	406	423	422	408	386	380						403
Year	Gasoline												
	January	February	March	April	May	June	July	August	September	October	November	December	Average ¹
2008 ...	250	249	267	285	311	336	337	315	310	257	183	145	270
2009 ...	154	165	169	177	195	226	218	226	221	222	231	227	203
2010 ...	237	231	242	249	248	239	238	238	236	244	249	260	243
2011 ...	269	278	308	328	338	318	316	315	313	299	294	284	305
2012 ...	293	310	333	338	323	307	297						314
Year	LP Gas												
	January	February	March	April	May	June	July	August	September	October	November	December	Average ¹
2008 ...	286	278	279	297	343	386	419	397	393	286	222	199	315
2009 ...	242	226	226	216	228	261	214	234	262	284	302	337	253
2010 ...	339	312	263	265	262	231	221	238	248	268	269	275	266
2011 ...	282	284	284	299	316	319	325	328	339	323	324	313	311
2012 ...	293	279	292	277	221	182	205						250
Year	Supplies												
	January	February	March	April	May	June	July	August	September	October	November	December	Average ¹
2008 ...	143	144	144	145	145	146	149	152	154	156	156	156	149
2009 ...	156	155	154	154	153	152	152	152	152	152	153	153	153
2010 ...	153	153	153	154	154	154	155	155	156	156	156	156	155
2011 ...	158	158	158	159	162	162	163	164	164	164	164	164	162
2012 ...	164	164	165	165	165	166	167						165
Year	Repairs												
	January	February	March	April	May	June	July	August	September	October	November	December	Average ¹
2008 ...	155	155	154	155	156	156	156	156	156	158	158	158	156
2009 ...	158	158	158	159	158	158	159	159	159	159	159	159	159
2010 ...	160	161	161	161	162	162	163	163	163	163	163	163	162
2011 ...	164	165	165	168	168	168	169	170	171	171	171	171	168
2012 ...	172	172	173	173	173	173	173						173
Year	Autos												
	January	February	March	April	May	June	July	August	September	October	November	December	Average ¹
2008 ...	109	109	109	108	108	108	109	108	108	108	108	108	108
2009 ...	109	109	109	109	109	109	110	108	108	110	112	112	110
2010 ...	112	111	111	111	110	110	110	110	110	110	111	111	111
2011 ...	111	112	112	113	114	115	115	115	115	115	115	115	114
2012 ...	115	116	115	116	116	116	115						116
Year	Trucks												
	January	February	March	April	May	June	July	August	September	October	November	December	Average ¹
2008 ...	112	112	111	110	109	109	108	107	106	106	106	106	108
2009 ...	107	108	109	109	109	110	110	109	109	111	112	113	110
2010 ...	113	113	113	113	113	112	112	112	112	113	113	114	113
2011 ...	114	115	116	116	116	116	116	116	116	116	116	116	116
2012 ...	117	118	118	118	118	118	118						118

See footnote(s) at end of table.

--continued

Prices Paid Index Sub-Components as a Percent of 1990-1992 Base, Monthly and Annual Average – United States: 2008-2012 (continued)

[Revised historical price indexes for months not shown are available at www.nass.usda.gov. Blank data cells indicate estimation period has not begun]

Year	Tractors												
	January	February	March	April	May	June	July	August	September	October	November	December	Average ¹
2008 ...	175	175	174	175	175	175	178	178	180	181	181	182	177
2009 ...	184	183	185	186	186	186	186	187	188	188	189	189	186
2010 ...	188	189	189	190	191	191	194	195	197	198	199	200	193
2011 ...	201	202	203	203	203	203	204	204	208	208	209	209	205
2012 ...	209	209	210	209	209	209	209	209					209
Year	Self-propelled												
	January	February	March	April	May	June	July	August	September	October	November	December	Average ¹
2008 ...	207	208	209	210	212	213	213	214	214	216	230	217	214
2009 ...	218	229	229	229	229	229	230	230	230	230	231	231	229
2010 ...	234	234	234	235	236	236	237	238	239	240	247	247	238
2011 ...	248	249	250	252	253	254	255	257	259	263	265	266	256
2012 ...	267	269	270	275	275	275	275	275					272
Year	Other machinery												
	January	February	March	April	May	June	July	August	September	October	November	December	Average ¹
2008 ...	202	203	204	209	221	222	226	230	232	234	235	236	221
2009 ...	228	230	231	230	230	229	244	243	242	241	241	241	236
2010 ...	240	240	240	240	241	241	243	243	243	243	244	244	242
2011 ...	245	248	249	250	253	253	254	256	256	256	257	259	253
2012 ...	259	258	259	266	266	269	271						264
Year	Custom rates												
	January	February	March	April	May	June	July	August	September	October	November	December	Average ¹
2008 ...	144	144	144	144	144	144	144	144	144	144	144	144	144
2009 ...	145	145	145	145	145	145	145	145	145	145	145	145	145
2010 ...	145	145	145	145	145	145	145	145	145	145	145	145	145
2011 ...	148	148	148	148	148	148	148	148	148	148	148	148	148
2012 ...	148	148	148	148	148	148	148	148					148
Year	Other services												
	January	February	March	April	May	June	July	August	September	October	November	December	Average ¹
2008 ...	143	143	144	144	145	147	148	149	148	148	147	147	146
2009 ...	158	158	158	157	157	159	158	157	158	157	157	157	158
2010 ...	161	161	162	162	162	164	164	164	164	163	163	163	163
2011 ...	164	164	165	165	166	167	167	167	167	166	166	165	166
2012 ...	168	168	168	168	169	170	172						169
Year	Cash rent												
	January	February	March	April	May	June	July	August	September	October	November	December	Average ¹
2008 ...	205	205	205	205	205	205	205	205	205	205	205	205	205
2009 ...	236	236	236	236	236	236	236	236	236	236	236	236	236
2010 ...	243	243	243	243	243	243	243	243	243	243	243	243	243
2011 ...	262	262	262	262	262	262	262	262	262	262	262	262	262
2012 ...	270	270	270	270	270	270	270	270					270
Year	Share rent												
	January	February	March	April	May	June	July	August	September	October	November	December	Average ¹
2008 ...	118	118	118	118	118	118	118	118	118	118	118	118	118
2009 ...	124	124	124	124	124	124	124	124	124	124	124	124	124
2010 ...	129	129	129	129	129	129	129	129	129	129	129	129	129
2011 ...	139	139	139	139	139	139	139	139	139	139	139	139	139
2012 ...	145	145	145	145	145	145	145	145					145

¹ Simple average and is year-to-date for current year.

Prices Paid Indexes as a Percent of 1910-1914 Base, Monthly and Annual Average – United States: 2008-2012

[Revised historical price indexes for months not shown are available at www.nass.usda.gov. Blank data cells indicate estimation period has not begun]

Year	Commodities, services, interest, taxes, and wage rates (PPITW)												
	January	February	March	April	May	June	July	August	September	October	November	December	Average ¹
2008 ...	2262	2293	2334	2396	2456	2505	2552	2557	2543	2497	2433	2379	2434
2009 ...	2381	2369	2377	2386	2383	2381	2359	2341	2332	2342	2355	2358	2364
2010 ...	2401	2394	2406	2420	2422	2411	2413	2419	2432	2465	2492	2521	2433
2011 ...	2596	2626	2674	2705	2710	2707	2718	2725	2730	2730	2746	2738	2700
2012 ...	2794	2805	2840	2858	2860	2854	2861						2839
Year	Items used for production, interest, taxes, and wage rates (PITW)												
	January	February	March	April	May	June	July	August	September	October	November	December	Average ¹
2008 ...	2320	2357	2404	2477	2546	2602	2656	2665	2648	2597	2527	2466	2522
2009 ...	2463	2447	2455	2464	2460	2454	2428	2406	2394	2405	2421	2425	2435
2010 ...	2472	2464	2476	2492	2494	2481	2484	2490	2505	2545	2576	2611	2508
2011 ...	2697	2731	2785	2819	2822	2819	2832	2840	2845	2846	2865	2856	2813
2012 ...	2919	2931	2970	2990	2993	2986	2996						2969
Year	Items used for production												
	January	February	March	April	May	June	July	August	September	October	November	December	Average ¹
2008 ...	1658	1690	1732	1800	1860	1910	1961	1969	1954	1902	1841	1787	1839
2009 ...	1788	1774	1782	1791	1787	1782	1763	1744	1734	1738	1752	1755	1766
2010 ...	1792	1785	1796	1814	1816	1805	1808	1813	1826	1854	1882	1912	1825
2011 ...	1977	2006	2052	2088	2091	2089	2100	2106	2111	2108	2125	2117	2081
2012 ...	2154	2164	2197	2216	2219	2213	2221						2198
Year	Feed												
	January	February	March	April	May	June	July	August	September	October	November	December	Average ¹
2008 ...	820	860	891	902	968	988	1,057	1,048	1,021	956	934	901	945
2009 ...	921	911	903	901	937	959	925	900	881	883	894	891	909
2010 ...	905	868	854	835	836	831	841	849	881	917	952	974	879
2011 ...	996	1,035	1,037	1,089	1,117	1,127	1,126	1,163	1,174	1,124	1,112	1,096	1,100
2012 ...	1,102	1,116	1,144	1,203	1,239	1,248	1,305						1,194
Year	Livestock & poultry												
	January	February	March	April	May	June	July	August	September	October	November	December	Average ¹
2008 ...	1572	1638	1599	1562	1626	1588	1580	1639	1596	1514	1511	1617	1587
2009 ...	1539	1517	1518	1565	1516	1436	1445	1418	1399	1409	1444	1463	1472
2010 ...	1547	1611	1674	1786	1750	1709	1724	1704	1662	1684	1717	1811	1698
2011 ...	1930	1984	2032	2040	1909	1866	1939	1880	1866	1988	2104	2152	1974
2012 ...	2281	2372	2350	2246	2202	2165	1958						2225
Year	Seeds												
	January	February	March	April	May	June	July	August	September	October	November	December	Average ¹
2008 ...	2086	2086	2086	2722	2722	2722	2722	2722	2722	2722	2722	2722	2563
2009 ...	2722	2722	3008	3008	3008	3008	3008	3008	3008	3008	3008	3008	2960
2010 ...	3008	3008	3082	3082	3082	3082	3082	3082	3082	3082	3082	3082	3070
2011 ...	3082	3082	3327	3327	3327	3327	3327	3327	3327	3327	3327	3327	3286
2012 ...	3327	3327	3581	3581	3581	3581	3581						3508
Year	Fertilizer												
	January	February	March	April	May	June	July	August	September	October	November	December	Average ¹
2008 ...	1,007	1,065	1,155	1,260	1,333	1,489	1,616	1,718	1,755	1,757	1,622	1,452	1,436
2009 ...	1,246	1,191	1,173	1,181	1,102	992	944	881	856	849	845	848	1,009
2010 ...	851	866	871	903	918	914	904	907	935	975	1,010	1,049	925
2011 ...	1,119	1,116	1,165	1,195	1,197	1,203	1,220	1,214	1,217	1,253	1,279	1,270	1,204
2012 ...	1,270	1,220	1,219	1,251	1,264	1,280	1,296						1,257
Year	Chemicals												
	January	February	March	April	May	June	July	August	September	October	November	December	Average ¹
2008 ...	820	822	827	833	840	854	868	871	883	889	903	899	859
2009 ...	877	915	930	941	944	913	919	895	906	914	943	954	921
2010 ...	885	885	887	892	893	895	899	900	903	900	893	887	893
2011 ...	891	895	894	892	890	886	891	894	902	912	910	918	898
2012 ...	919	942	939	918	942	956	970						941

See footnote(s) at end of table.

--continued

Prices Paid Indexes as a Percent of 1910-1914 Base, Monthly and Annual Average – United States: 2008-2012 (continued)

[Revised historical price indexes for months not shown are available at www.nass.usda.gov. Blank data cells indicate estimation period has not begun]

Year	Fuels												
	January	February	March	April	May	June	July	August	September	October	November	December	Average ¹
2008 ...	2369	2400	2690	2847	3091	3282	3310	3036	2870	2443	1903	1601	2653
2009 ...	1575	1526	1476	1546	1600	1835	1788	1874	1897	1948	2048	2061	1765
2010 ...	2151	2093	2133	2224	2229	2125	2100	2147	2152	2245	2305	2387	2191
2011 ...	2468	2589	2801	2931	2959	2875	2863	2843	2841	2778	2850	2769	2797
2012 ...	2745	2813	2950	2932	2769	2584	2570						2766
Year	Supplies & repairs												
	January	February	March	April	May	June	July	August	September	October	November	December	Average ¹
2008 ...	1072	1074	1069	1076	1081	1084	1094	1100	1104	1114	1115	1115	1091
2009 ...	1119	1116	1114	1114	1109	1106	1111	1111	1111	1114	1114	1114	1113
2010 ...	1120	1124	1125	1127	1131	1133	1138	1139	1140	1141	1142	1143	1134
2011 ...	1151	1154	1155	1169	1176	1179	1187	1193	1198	1198	1198	1198	1180
2012 ...	1203	1204	1210	1210	1210	1212	1213						1209
Year	Autos & trucks												
	January	February	March	April	May	June	July	August	September	October	November	December	Average ¹
2008 ...	2965	2956	2940	2922	2907	2896	2883	2847	2818	2817	2819	2818	2882
2009 ...	2841	2874	2892	2901	2909	2924	2932	2895	2903	2958	2987	2993	2917
2010 ...	2996	3004	3003	2996	2985	2979	2976	2975	2980	2989	3003	3014	2992
2011 ...	3026	3053	3067	3076	3089	3091	3084	3074	3071	3078	3084	3090	3074
2012 ...	3109	3133	3136	3138	3132	3132	3132						3130
Year	Machinery												
	January	February	March	April	May	June	July	August	September	October	November	December	Average ¹
2008 ...	4,968	4,986	5,005	5,063	5,204	5,220	5,277	5,319	5,358	5,393	5,543	5,431	5,231
2009 ...	5,380	5,501	5,527	5,523	5,517	5,508	5,660	5,662	5,658	5,655	5,655	5,652	5,575
2010 ...	5,677	5,678	5,674	5,694	5,717	5,726	5,769	5,782	5,802	5,825	5,894	5,907	5,762
2011 ...	5,937	5,982	6,002	6,029	6,067	6,083	6,108	6,150	6,190	6,237	6,259	6,287	6,111
2012 ...	6,304	6,315	6,330	6,452	6,450	6,473	6,496						6,403
Year	Building materials												
	January	February	March	April	May	June	July	August	September	October	November	December	Average ¹
2008 ...	2,125	2,139	2,157	2,188	2,222	2,257	2,293	2,327	2,339	2,319	2,298	2,272	2,245
2009 ...	2,263	2,239	2,232	2,221	2,217	2,208	2,207	2,203	2,208	2,207	2,205	2,208	2,218
2010 ...	2,211	2,224	2,236	2,253	2,267	2,258	2,255	2,254	2,251	2,251	2,255	2,263	2,248
2011 ...	2,277	2,290	2,305	2,318	2,326	2,336	2,347	2,346	2,345	2,344	2,341	2,341	2,326
2012 ...	2,353	2,370	2,377	2,386	2,389	2,388	2,387						2,379
Year	Services & rent												
	January	February	March	April	May	June	July	August	September	October	November	December	Average ¹
2008 ...	1,796	1,797	1,799	1,805	1,808	1,826	1,833	1,836	1,832	1,833	1,825	1,825	1,818
2009 ...	1,980	1,978	1,977	1,974	1,974	1,985	1,976	1,975	1,975	1,974	1,970	1,970	1,976
2010 ...	2,027	2,025	2,031	2,030	2,033	2,043	2,043	2,044	2,043	2,040	2,037	2,038	2,036
2011 ...	2,112	2,114	2,119	2,118	2,123	2,132	2,132	2,132	2,133	2,125	2,121	2,120	2,123
2012 ...	2,175	2,176	2,175	2,176	2,181	2,190	2,199						2,182

See footnote(s) at end of table.

--continued

Prices Paid Indexes as a Percent of 1910-1914 Base, Monthly and Annual Average – United States: 2008-2012 (continued)

[Revised historical price indexes for months not shown are available at www.nass.usda.gov. Blank data cells indicate estimation period has not begun]

Year	Interest												
	January	February	March	April	May	June	July	August	September	October	November	December	Average ¹
2008 ...	3727	3727	3727	3727	3727	3727	3727	3727	3727	3727	3727	3727	3727
2009 ...	3431	3431	3431	3431	3431	3431	3431	3431	3431	3431	3431	3431	3431
2010 ...	3312	3312	3312	3312	3312	3312	3312	3312	3312	3312	3312	3312	3312
2011 ...	3381	3381	3381	3381	3381	3381	3381	3381	3381	3381	3381	3381	3381
2012 ...	3635	3635	3635	3635	3635	3635	3635	3635	3635	3635	3635	3635	3635
Year	Taxes												
	January	February	March	April	May	June	July	August	September	October	November	December	Average ¹
2008 ...	5598	5598	5598	5598	5598	5598	5598	5598	5598	5598	5598	5598	5598
2009 ...	5453	5453	5453	5453	5453	5453	5453	5453	5453	5453	5453	5453	5453
2010 ...	5646	5646	5646	5646	5646	5646	5646	5646	5646	5646	5646	5646	5646
2011 ...	5935	5935	5935	5935	5935	5935	5935	5935	5935	5935	5935	5935	5935
2012 ...	6225	6225	6225	6225	6225	6225	6225	6225	6225	6225	6225	6225	6225
Year	Wage rates												
	January	February	March	April	May	June	July	August	September	October	November	December	Average ¹
2008 ...	6985	6985	6985	6830	6830	6830	6701	6701	6701	6927	6927	6927	6860
2009 ...	7062	7062	7062	7017	7017	7017	6888	6888	6888	7062	7062	7062	7007
2010 ...	7159	7159	7159	6991	6991	6991	6972	6972	6972	7192	7192	7192	7079
2011 ...	7301	7301	7301	7075	7075	7075	7062	7062	7062	7205	7205	7205	7161
2012 ...	7444	7444	7444	7373	7373	7373	7373	7373	7373	7403	7403	7403	7403
Year	Family living												
	January	February	March	April	May	June	July	August	September	October	November	December	Average ¹
2008 ...	2,005	2,011	2,028	2,040	2,057	2,078	2,089	2,081	2,078	2,057	2,018	1,997	2,045
2009 ...	2,005	2,015	2,020	2,025	2,031	2,049	2,045	2,050	2,051	2,053	2,055	2,051	2,038
2010 ...	2,058	2,059	2,067	2,071	2,072	2,070	2,071	2,073	2,075	2,077	2,078	2,082	2,071
2011 ...	2,092	2,102	2,122	2,136	2,146	2,144	2,146	2,152	2,155	2,150	2,149	2,143	2,136
2012 ...	2,153	2,162	2,179	2,185	2,183	2,180	2,176	2,176	2,176	2,176	2,176	2,176	2,174
Year	Commodities, services, interest, taxes, and wage rates Adjusted for productivity												
	January	February	March	April	May	June	July	August	September	October	November	December	Average ¹
2008 ...	1442	1447	1456	1456	1468	1479	1478	1478	1475	1481	1466	1454	1465
2009 ...	1420	1420	1422	1421	1421	1423	1410	1408	1407	1421	1424	1423	1418
2010 ...	1409	1408	1410	1401	1402	1400	1399	1400	1402	1423	1427	1432	1409
2011 ...	1448	1454	1464	1454	1456	1455	1456	1458	1459	1469	1471	1469	1459
2012 ...	1489	1492	1499	1498	1498	1496	1497	1497	1497	1497	1497	1497	1496
Year	Parity ratio ²												
	January	February	March	April	May	June	July	August	September	October	November	December	Average ¹
2008 ...	41	40	40	39	39	40	40	39	39	38	37	36	39
2009 ...	37	34	34	34	35	36	35	34	34	36	37	37	35
2010 ...	36	35	36	35	36	36	37	37	38	39	39	38	37
2011 ...	41	41	41	41	42	42	43	43	42	43	43	41	42
2012 ...	43	41	41	39	40	41	43	43	43	43	43	41	41
Year	Adjusted parity ratio (PPITW) ³												
	January	February	March	April	May	June	July	August	September	October	November	December	Average ¹
2008 ...	42	42	41	40	41	42	41	40	40	40	38	37	40
2009 ...	39	35	35	36	36	37	37	36	36	38	38	38	37
2010 ...	37	36	38	37	38	37	38	39	39	40	41	40	38
2011 ...	42	42	42	42	43	43	44	44	43	44	44	43	43
2012 ...	44	42	42	41	41	42	44	44	44	44	44	43	42

¹ Simple average and is year-to-date for current year.

² Ratio of index of prices received to index of prices paid for commodities, services, interest, taxes, and wage rates.

³ Ratio of the index of prices received after adjustment for government payments to the index of prices paid for commodities, services, interest, taxes, and wage rates.

Reliability of Prices Paid Estimates

Definition: Prices paid by farmers represent the average costs of inputs purchased by farmers and ranchers to produce agricultural commodities. Conceptually, the average price when multiplied by quantity purchased should equal total producer expenditures for the item.

Survey procedures: The prices paid data are obtained from establishments that sell goods and services to farmers and ranchers. Annually, about 8,500 firms are randomly selected from lists by type of item sold with an average response rate in the range of 75-80 percent. Firms are asked to report the price for the specified item "most commonly bought by farmers" or that was the "volume seller". Approximately 135 items are surveyed each March to represent all production input items purchased. The survey reference period for most items is the five business days centered around the 15th of the month. Separate prices paid surveys are conducted for agricultural chemicals, fuels, feed, fertilizer, machinery, and seed.

Summary and estimation procedures: The annual March Prices Paid Survey is summarized as a nonprobability survey. Average prices reported are aggregated to the region and United States level using weights available from expenditure data and other administrative sources. Price recommendations are prepared by the State Field Offices and Headquarters for review by the Agricultural Statistics Board in Washington, D.C. Also, the change in price level for individual items surveyed are combined to the regional and United States levels, and are published as prices paid indexes referenced to a specific base period. Prices paid indexes for new autos and trucks, building materials, farm supplies, motor supplies, and marketing containers are updated based on price changes measured in selected Bureau of Labor Statistics (BLS) indexes.

Revisions: Any revisions are published in the monthly and in annual issues of Agricultural Prices. The basis for revision must be supported by additional data that directly affect the level of the estimate. More revisions are likely for March when separate prices paid surveys are conducted, in lieu of BLS indexes, by the USDA to measure price change.

Reliability: Current methods of summarization for the March data are not designed directly to calculate sampling errors. However, analytical measures approximate the United States relative sampling errors for major items around 10 percent. Any nonsampling errors are attributed to such things as the inability to obtain correct information, differences in interpreting questions or definitions, mistakes in coding or processing the data, etc. Efforts are made at each step in the survey process to minimize these nonsampling errors.

Program change: Effective January 1, 1995, the National Agricultural Statistics Service updated the weights and changed the construction of its prices paid and received by farmers indexes. A Federal Register Notice dated October 28, 1994 discussed these program modifications.

A 1990-1992 reference and base period replaced the 1977 reference and 1971-1973 base weight period. Five-year moving average weights replaced the current fixed 1971-1973 base period weights. The 1910-1914=100 price indexes, required by statute for computing parity prices, were linked forward based on the changes in the new 1990-1992=100 indexes. The new indexes were constructed by multiplying the ratios of the current prices to the base period prices by the moving average weights (adjusted for seasonal marketing patterns for the prices received indexes).

Information Contacts

Direct general questions to Troy Joshua, Chief, Environmental, Economics and Demographics Branch at (202) 720-6146. Below are the commodity specialists to contact for additional information.

Crop Prices Received

Lance Honig, Chief, Crops Branch	(202) 720-2127
Jacqueline Moore, Head, Field Crops Section.....	(202) 720-2127
Suzanne Avilla – Peanuts, Rice	(202) 720-7688
Bryan Durham – Oats, Rye, Wheat.....	(202) 720-8068
Steve Maliszewski – Cotton, Cotton Ginnings, Sorghum.....	(202) 720-5944
Anthony Prillaman – Corn, Proso Millet, Flaxseed	(202) 720-9526
Julie Schmidt – Crop Weather, Barley, Hay	(202) 720-7621
Travis Thorson – Soybeans, Sunflower, Other Oilseeds	(202) 720-7369
Jorge Garcia-Pratts, Head, Fruits, Vegetables and Special Crops Section.....	(202) 720-2127
Debbie Flippin – Fresh and Processing Vegetables, Onions, Strawberries	(202) 720-2157
Fred Granja – Apples, Apricots, Cherries, Plums, Prunes, Tobacco	(202) 720-4288
Erika White – Floriculture, Maple Syrup, Nursery, Tree Nuts	(202) 720-4215
Chris Hawthorn – Citrus, Coffee, Sugar Crops, Grapes, Tropical Fruits	(202) 720-5412
Daphne Schauber – Berries, Cranberries, Potatoes, Sweet Potatoes	(202) 720-4285
Dan Norris – Austrian Winter Peas, Dry Edible Peas, Lentils, Mints, Mushrooms, Peaches, Pears, Wrinkled Seed Peas, Dry Beans	(202) 720-3250

Livestock Prices Received

Dan Kerestes, Chief, Livestock Branch.....	(202) 720-3570
Scott Hollis, Head, Livestock Section	(202) 720-3570
Travis Averill – Cattle.....	(202) 720-3040
Mike Miller – Milk, Milk Cows	(202) 720-3278
Doug Bounds – Hogs.....	(202) 720-3106
Bruce Boess, Head, Poultry and Specialty Commodities Section	(202) 720-3570
Cody Brokmeyer – Turkeys.....	(202) 690-3237
LaKeya Jones – Honey	(202) 720-0585
Kim Linonis – Eggs	(202) 690-8632
Miste Salmon – Broilers	(202) 720-3244

Indexes, Prices Paid, and Parity Prices

Troy Joshua, Chief, Environmental, Economics and Demographics Branch	(202) 720-6146
Tony Dorn, Head, Economics Section.....	(202) 690-3223
Daryl Brinkman – Prices Received Indexes, Parity Prices	(202) 720-8844
Scott Shimmin – Grazing Fees	(202) 690-3231
Vincent Davis – Prices Paid Indexes, Prices Paid for Feed, Fertilizer, Agricultural Chemicals, Seeds, Farm Supplies and Repairs, Farm Machinery, Fuels, Feeder Livestock, Poultry Chicks, Feed Price Ratios, Autos & Trucks	(202) 690-3229

Access to NASS Reports

For your convenience, you may access NASS reports and products the following ways:

- All reports are available electronically, at no cost, on the NASS web site: <http://www.nass.usda.gov>
- Both national and state specific reports are available via a free e-mail subscription. To set-up this free subscription, visit <http://www.nass.usda.gov> and in the “Follow NASS” box under “Receive reports by Email,” click on “National” or “State” to select the reports you would like to receive.
- Printed reports may be purchased from the National Technical Information Service (NTIS) by calling toll-free (800) 999-6779, or (703) 605-6220 if calling from outside the United States or Canada. Accepted methods of payment are Visa, MasterCard, check, or money order.

For more information on NASS surveys and reports, call the NASS Agricultural Statistics Hotline at (800) 727-9540, 7:30 a.m. to 4:00 p.m. ET, or e-mail: nass@nass.usda.gov.

The United States Department of Agriculture (USDA) prohibits discrimination in all its programs and activities on the basis of race, color, national origin, age, disability, and where applicable, sex, marital status, familial status, parental status, religion, sexual orientation, political beliefs, genetic information, reprisal, or because all or a part of an individual's income is derived from any public assistance program. (Not all prohibited bases apply to all programs.) Persons with disabilities who require alternative means for communication of program information (Braille, large print, audiotape, etc.) should contact USDA's TARGET Center at (202) 720-2600 (voice and TDD).

To file a complaint of discrimination, write to USDA, Assistant Secretary for Civil Rights, Office of the Assistant Secretary for Civil Rights, 1400 Independence Avenue, S.W., Stop 9410, Washington, DC 20250-9410, or call toll-free at (866) 632-9992 (English) or (800) 877-8339 (TDD) or (866) 377-8642 (English Federal-relay) or (800) 845-6136 (Spanish Federal-relay). USDA is an equal opportunity provider and employer.