



# Agricultural Prices

ISSN: 1937-4216

Released December 31, 2012, by the National Agricultural Statistics Service (NASS), Agricultural Statistics Board, United States Department of Agriculture (USDA).

## December Farm Prices Received Index Declined 5 Points

The preliminary All Farm Products Index of Prices Received by Farmers in December, at 201 percent, based on 1990-1992=100, decreased 5 points (2.4 percent) from November. The Crop Index is down 8 points (3.4 percent) and the Livestock Index remained unchanged. Producers received lower prices for milk, lettuce, turkeys, and eggs and higher prices for soybeans, broilers, cattle, and grapes. In addition to prices, the overall index is also affected by the seasonal change based on a 3-year average mix of commodities producers sell. Increased monthly movement of wheat, milk, broilers, and hay offset the decreased marketing of corn, soybeans, cattle, and grapes.

The preliminary All Farm Products Index is up 22 points (12 percent) from December 2011. The Food Commodities Index, at 187, decreased 3 points (1.6 percent) from last month but increased 18 points (11 percent) from December 2011.

## Prices Paid Index Down 1 Point

The December Index of Prices Paid for Commodities and Services, Interest, Taxes, and Farm Wage Rates (PPITW) is 217 percent of the 1990-1992 average. The index is down 1 point (-0.5 percent) from November but 11 points (5.3 percent) above December 2011. Lower prices in December for concentrates, complete feeds, LP gas, and gasoline more than offset higher prices for feeder pigs, feeder cattle, nitrogen, and potash & phosphate.

## Prices Received, Prices Paid, and Ratio of Prices Received to Prices Paid Indexes 1990-1992 Base – United States: December 2012 with Comparisons

Index	December	November	December
	2011	2012	2012
Prices received by farmers .....	179	206	201
Prices paid by farmers .....	206	218	217
Ratio of prices received to prices paid .....	87	94	93

## Contents

Prices Received by Farmers .....	2
Prices Received Indexes – United States: December 2012 with Comparisons .....	5
Prices Received and Prices Paid Indexes by Month for Selected Groups – United States: 2011 and 2012, 1990-1992 Base .....	5
Received Indexes by Month, Livestock Products, All Products, and All Crops – United States: 1990-1992=100 Chart.....	6
Received Indexes by Month, Food Grains, Feed Grains & Hay, and Oilseeds – United States: 1990-1992=100 Chart.....	6
Received Indexes by Month, Fruit & Nut and Commercial Vegetables – United States: 1990-1992=100 Chart.....	7
Received Indexes by Month, Meat Animal, Dairy Products, and Poultry & Eggs – United States: 1990-1992=100 Chart.....	7
Prices Received for Field Crops and Fruits – United States: December 2012 with Comparisons .....	8
Prices Received for Vegetables and Livestock – United States: December 2012 with Comparisons .....	9
Prices Received for Corn by Month – United States Chart.....	10
Prices Received for Wheat by Month – United States Chart .....	10
Prices Received for Upland Cotton by Month – United States Chart .....	11
Prices Received for Soybeans by Month – United States Chart .....	11
Prices Received for Cattle by Month – United States Chart .....	12
Prices Received for Milk by Month – United States Chart .....	12
Prices Received for Hogs by Month – United States Chart .....	13
Prices Received for Poultry by Month – United States Chart .....	13
Prices Received for All Wheat, Corn, and Soybeans by Month – United States: 2012 with Comparisons .....	14
Prices Received for Beef Cattle and All Hogs by Month – United States: 2012 with Comparisons .....	14
Prices Received for All Wheat – States and United States: December 2012 with Comparisons .....	15
Prices Received for Winter Wheat – States and United States: December 2012 with Comparisons .....	15
Prices Received for Durum Wheat – States and United States: December 2012 with Comparisons .....	16
Prices Received for Spring Wheat – States and United States: December 2012 with Comparisons .....	16
Prices Received for All Barley – States and United States: December 2012 with Comparisons.....	17
Prices Received for Malting Barley – States: December 2012 with Comparisons .....	17
Prices Received for Feed Barley – States: December 2012 with Comparisons .....	17
Prices Received for Corn – States and United States: December 2012 with Comparisons .....	18
Prices Received for Soybeans – States and United States: December 2012 with Comparisons .....	18
Prices Received for Oats – States and United States: December 2012 with Comparisons .....	19
Prices Received for Sorghum Grain – States and United States: December 2012 with Comparisons.....	19
Prices Received for Dry Beans – States and United States: December 2012 with Comparisons .....	20
Prices Received for Peanuts (in shell) – States and United States: December 2012 with Comparisons.....	20
Prices Received for Sunflower – States and United States: December 2012 with Comparisons.....	21
Prices Received for Canola – States and United States: December 2012 with Comparisons .....	21
Prices Received for Flaxseed – States and United States: December 2012 with Comparisons .....	21
Prices Received for Hops – States and United States: 2010 through 2012 .....	21
Prices Received for Upland Cotton and Cottonseed – States and United States: December 2012 with Comparisons .....	22
Prices Received and Farm Marketings for Upland Cotton and Rice – United States: December 2012 with Comparisons .....	22
Prices Received for Hay by Type – States and United States: December 2012 with Comparisons.....	23
Prices Received for Apples – States and United States: December 2012 with Comparisons .....	23
Prices Received for Citrus Fruits by Utilization – States and United States: December 2011 .....	24
Prices Received for Citrus Fruits by Utilization – States and United States: November 2012.....	25
Prices Received for Citrus Fruits by Utilization – States and United States: December 2012 .....	26
Prices Received for Potatoes – States and United States: December 2012 with Comparisons.....	27
Prices Received for All Milk – States and United States: December 2012 with Comparisons.....	28

Prices Received for Milk Cows – States and United States: October 2012 with Comparisons.....	29
Commodity Parity Prices and Price as Percent of Parity Price – United States: December 2012 with Comparisons .....	30
Commodity Parity Prices – United States: December 2012 with Comparisons .....	31
Reliability of Prices Received Estimates .....	33
Prices Paid by Farmers.....	34
Prices Paid Indexes and Related Parity Ratios – United States: December 2012 with Comparisons.....	35
Prices Paid Indexes and Annual Weights for Input Components and Sub-components – United States: December 2012 with Comparisons.....	36
Paid Indexes by Month, All Items and Production Items – United States: 1990-1992=100 Chart .....	37
Paid Indexes, Annual Averages, Production Items, Interest, Taxes, and Wages – United States: 1990-1992=100 Chart .....	37
Paid Indexes by Farm Type, All Items – United States: 1990-1991=100 Chart.....	38
Paid Indexes by Origin, All Production Items – United States: 1990-1992=100 Chart .....	38
Paid Indexes by Non-Farm Sector, Supplies & Repairs, Fertilizer, Machinery, and Fuel – United States: 1990-1992=100 Chart .....	39
Paid Indexes by Month, Feed and Replacement Livestock – United States: 1990-1992=100 Chart.....	39
Feed Price Ratios – United States: December 2012 with Comparisons .....	40
Prices Received Used to Calculate Feed Price Ratios – United States: December 2012 with Comparisons.....	40
Prices Paid for Feeder Livestock – United States: December 2012 with Comparisons.....	40
Prices Paid for Feed – United States: 2007-2012.....	41
Annual Average Prices Paid for Feeder Livestock – United States: 2007-2012.....	41
Prices Paid by Farmers and Ranchers for Beef Cattle Production.....	42
Prices Received for Beef Cattle – Selected United States Regions: 2012 .....	42
Reliability of Prices Paid Estimates .....	43
Calendar of Prices Received Features in the 2011 Agricultural Price Report .....	44
Calendar of Prices Paid Features in the 2011 Agricultural Price Report .....	47
Information Contacts .....	48

## Prices Received by Farmers

The December All Farm Products Index is 201 percent of its 1990-1992 base, down 2.4 percent from the November index but 12 percent above the December 2011 index.

**All crops:** The December index, at 228, decreased 3.4 percent from November but is 15 percent above December 2011. Index decreases for fruits & nuts, feed grains & hay, and commercial vegetables more than offset the index increases for oilseeds and food grains.

**Food grains:** The December index, at 268, is 1.1 percent above the previous month and 13 percent above a year ago. The December price for all wheat, at \$8.33 per bushel, is down 13 cents from November but \$1.13 above December 2011.

**Feed grains & hay:** The December index, at 299, is down 1 percent from last month but 19 percent above a year ago. The corn price, at \$7.01 per bushel, is down 1 cent from last month but \$1.15 above December 2011. The all hay price, at \$192 per ton, is down \$1.00 from November but up \$18.00 from last December. Sorghum grain, at \$12.30 per cwt, is 10 cents below November but \$1.80 above December last year.

**Cotton, Upland:** The December index, at 114, is up 0.9 percent from November but 22 percent below last year. The December price, at 68.8 cents per pound, is up 0.4 cents from the previous month but 20.1 cents below last December.

**Oilseeds:** The December index, at 261, is up 3.6 percent from November and 23 percent higher than December 2011. The soybean price, at \$14.70 per bushel, increased 40 cents from November and is \$3.20 higher than December 2011.

**Fruits & nuts:** The December index, at 183, is down 9.0 percent from November but 16 percent higher than a year ago. Price decreases for oranges and lemons more than offset the increase in prices for grapes and apples.

**Commercial vegetables:** The December index, at 134, is down 9.5 percent from last month and 1.5 percent below December 2011. Price declines for lettuce and broccoli more than offset price increases during December for onions and tomatoes.

**Potatoes & dry beans:** The December index, at 139, is down 3.5 percent from last month and 17 percent below December 2011. The all potato price, at \$7.26 per cwt, is down 13 cents from November and \$1.80 lower than last December. The all dry bean price, at \$36.70 per cwt, is down \$2.50 from the previous month and \$5.30 below December 2011.

**Livestock and products:** The December index, at 168, is unchanged from last month but up 7.0 percent from December 2011. Compared with a year ago, prices are higher for broilers, milk, cattle, and calves. Prices for eggs, turkeys, and hogs are down from last year.

**Meat animals:** The December index, at 161, is up 0.6 percent from last month and 3.2 percent higher than last year. The December hog price, at \$62.90 per cwt, is up \$1.80 from November but 60 cents lower than a year ago. The December beef cattle price of \$125 per cwt is up \$2.00 from last month and \$5.00 higher than December 2011.

**Dairy products:** The December index, at 162, is down 3.6 percent from a month ago but 7.3 percent higher than December last year. The December all milk price of \$21.10 per cwt is 90 cents less than last month but up \$1.40 from December 2011.

**Poultry & eggs:** The December index, at 185, is up 0.5 percent from November and 14 percent above a year ago. The December market egg price, at 95.7 cents per dozen, decreased 6.3 cents from November and is 14.3 cents less than December 2011. The December broiler price, at 60.0 cents per pound, is up 3.0 cents from November and 13.0 cents higher than a year ago. The December turkey price, at 66.9 cents per pound, is down 8.2 cents from the previous month and 4.6 cents below last year.

## Prices Received Indexes – United States: December 2012 with Comparisons

[Revised historical price indexes for months not shown are available at [www.nass.usda.gov](http://www.nass.usda.gov)]

Index	1910-1914 Base				1990-1992 Base		
	1990-1992 Average	December 2011	November 2012	December 2012	December 2011	November 2012	December 2012
	(percent)	(percent)	(percent)	(percent)	(percent)	(percent)	(percent)
All products .....	639	1137	1310	1274	179	206	201
All crops .....	500	982	1169	1128	198	236	228
Food grains .....	325	750	839	849	237	265	268
Feed grains & hay .....	363	900	1077	1067	252	302	299
Cotton, Upland .....	517	752	579	582	147	113	114
Tobacco .....	1263	1559	1559	1559	103	103	103
Oilseeds .....	554	1164	1383	1429	212	252	261
Fruits & nuts .....	716	1100	1406	1278	158	201	183
Commercial vegetables .....	698	975	1061	959	136	148	134
Potatoes & dry beans .....	540	853	731	703	168	144	139
Other crops .....	493	648	651	651	132	132	132
Livestock and products .....	768	1200	1286	1284	157	168	168
Meat animals .....	1021	1594	1630	1639	156	160	161
Dairy products .....	799	1212	1354	1298	151	168	162
Poultry & eggs .....	282	454	515	519	162	184	185
Food commodities .....	(NA)	(NA)	(NA)	(NA)	169	190	187

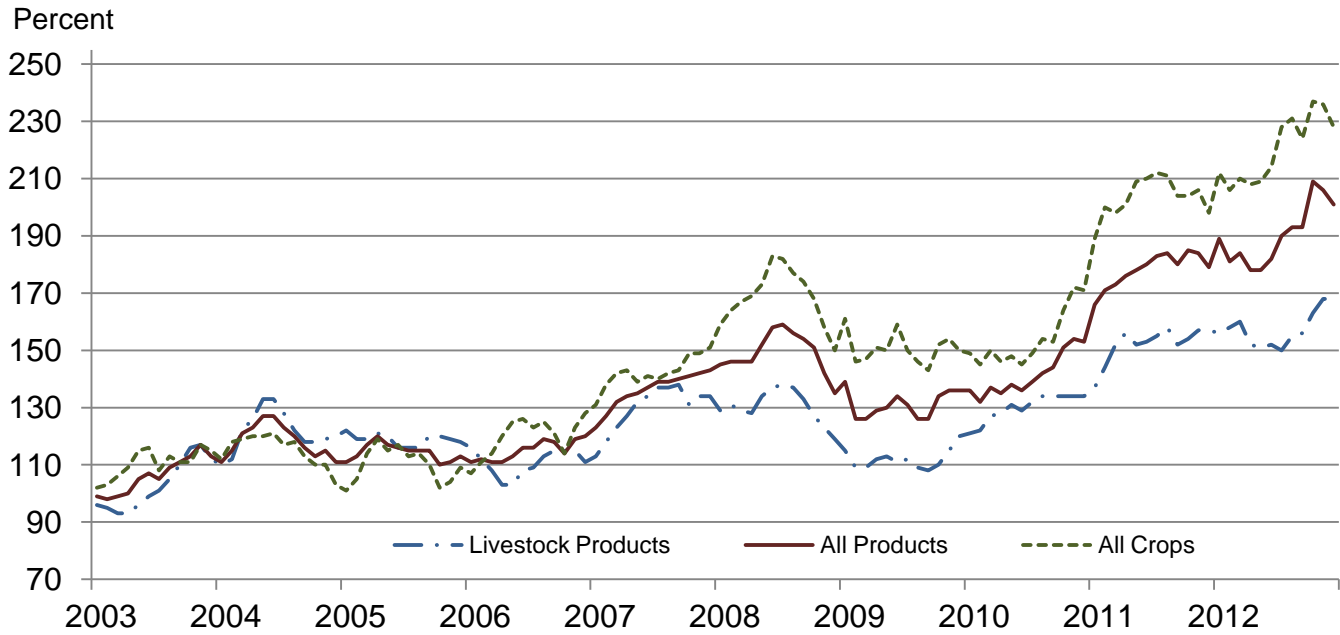
(NA) Not available.

## Prices Received and Prices Paid Indexes by Month for Selected Groups – United States: 2011 and 2012, 1990-1992 Base

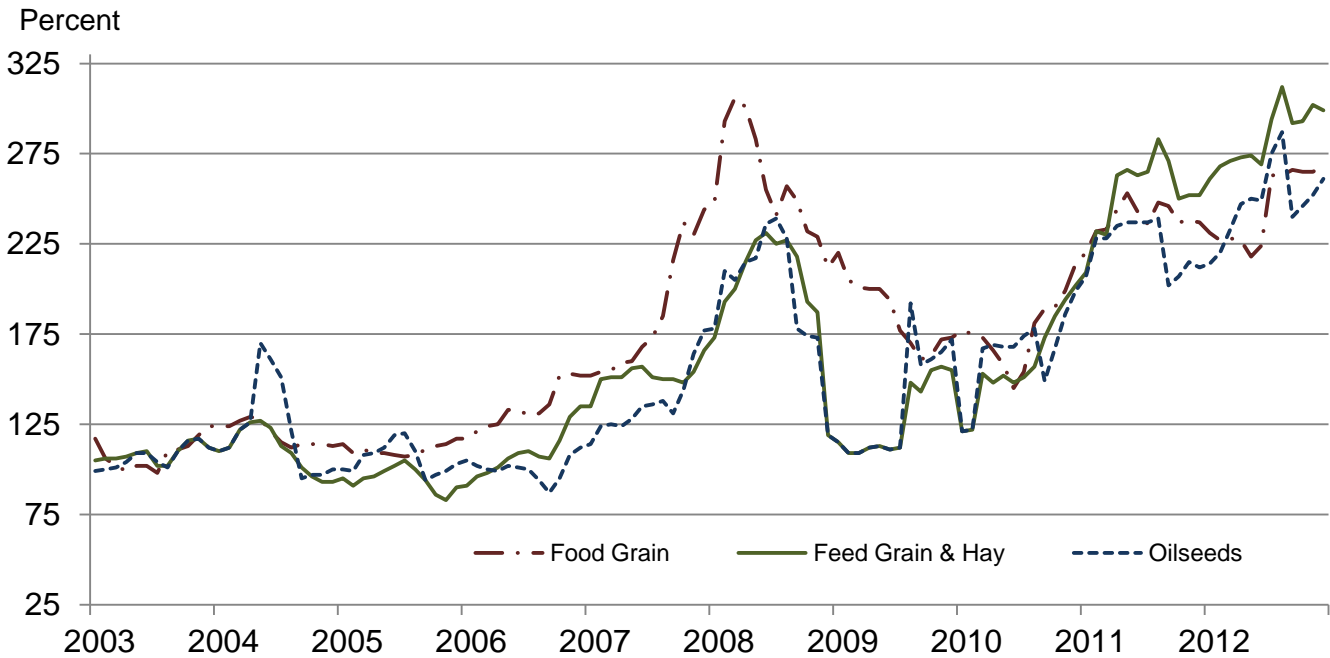
[Revised historical price indexes for months not shown are available at [www.nass.usda.gov](http://www.nass.usda.gov)]

Month	Index of prices received						Index of prices paid			
	All farm products		All crops		Livestock and products		All items		Production items	
	2011	2012	2011	2012	2011	2012	2011	2012	2011	2012
	(percent)	(percent)	(percent)	(percent)	(percent)	(percent)	(percent)	(percent)	(percent)	(percent)
January .....	166	189	189	212	137	156	195	210	204	222
February .....	171	181	200	206	144	158	197	211	207	223
March .....	173	184	198	210	152	160	201	213	212	227
April .....	176	178	201	208	156	152	203	215	215	228
May .....	178	178	209	209	152	151	204	215	216	229
June .....	180	182	210	214	153	152	203	214	215	228
July .....	183	190	212	228	155	150	204	214	217	227
August .....	184	193	211	231	158	155	205	216	217	231
September .....	180	193	204	224	152	156	205	218	218	233
October .....	185	209	204	237	154	163	205	218	217	233
November .....	184	206	206	236	157	168	206	218	219	232
December .....	179	201	198	228	157	168	206	217	218	231

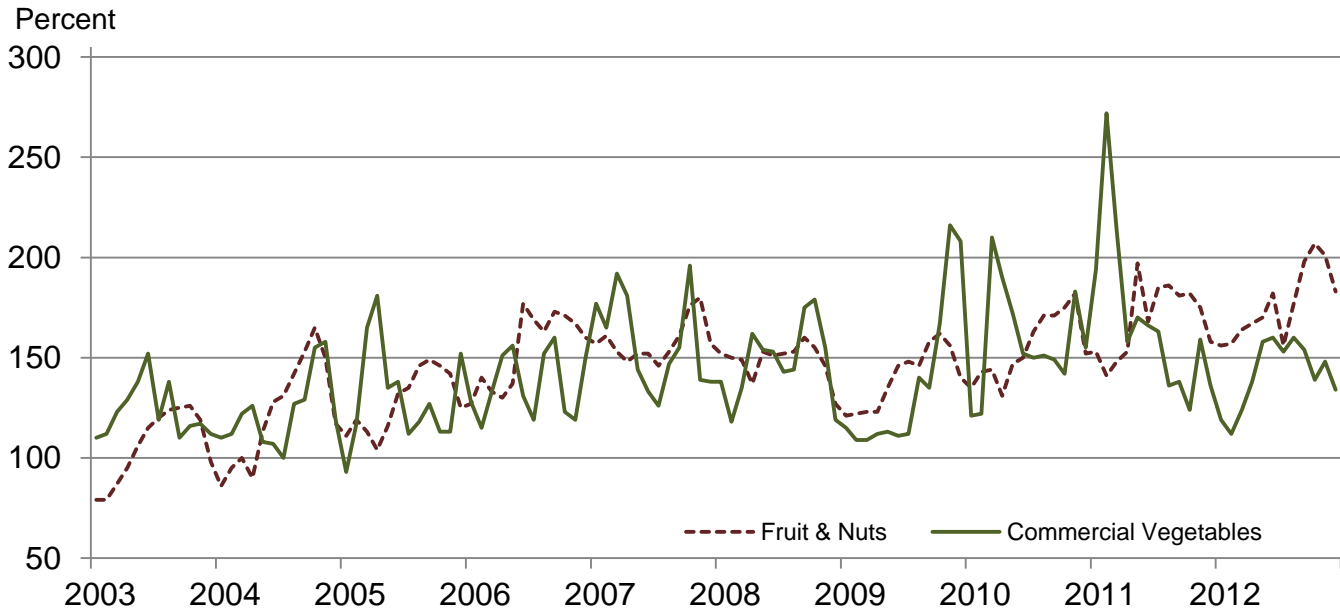
**Received Indexes by Month,  
Livestock Products, All Products, and All Crops –  
United States: 1990-1992=100**



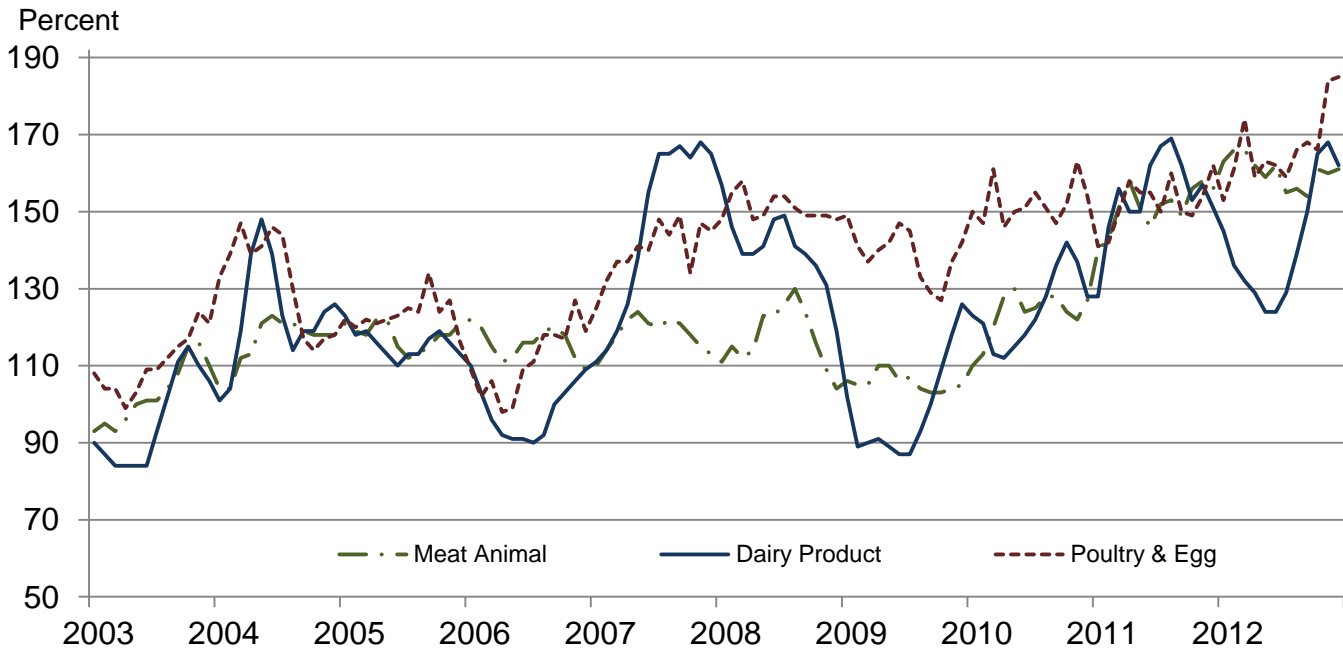
**Received Indexes by Month,  
Food Grains, Feed Grains & Hay, and Oilseeds –  
United States: 1990-1992=100**



**Received Indexes by Month,  
Fruit & Nuts and Commercial Vegetables –  
United States: 1990-1992=100**



**Received Indexes by Month,  
Meat Animal, Dairy Product, and Poultry & Egg –  
United States: 1990-1992=100**



**Prices Received for Field Crops and Fruits – United States: December 2012 with Comparisons**

Commodity	Average 1990-1992	December 2011	November 2012	Preliminary December 2012
<b>Field crops</b>				
Austrian winter peas .....	dollars/cwt (NA)	19.10	(S)	(S)
Barley, all .....	dollars/bushel 2.12	5.46	6.45	6.17
Feed .....	dollars/bushel 1.90	4.88	5.68	5.65
Malting .....	dollars/bushel 2.43	5.55	6.60	6.30
Beans, dry edible .....	dollars/cwt 19.10	42.00	39.20	36.70
Canola .....	dollars/cwt (NA)	23.00	26.70	27.30
Chickpeas, all .....	dollars/cwt (NA)	38.30	38.10	39.10
Large .....	dollars/cwt (NA)	39.00	38.60	41.50
Small .....	dollars/cwt (NA)	30.80	30.00	27.50
Corn .....	dollars/bushel 2.30	5.86	7.02	7.01
Cotton, Upland .....	dollars/pound 0.606	0.889	0.684	0.688
Cottonseed .....	dollars/ton 96.00	264.00	257.00	254.00
Flaxseed .....	dollars/bushel 4.27	13.50	14.10	14.30
Hay, all, baled .....	dollars/ton 76.30	174.00	193.00	192.00
Alfalfa .....	dollars/ton 77.20	195.00	215.00	217.00
Other .....	dollars/ton 60.00	131.00	144.00	142.00
Lentils .....	dollars/cwt (NA)	24.30	21.20	19.60
Oats .....	dollars/bushel 1.22	3.57	3.92	3.78
Peanuts, in-shell .....	dollars/pound 0.304	0.308	0.328	0.344
Peas, dry edible .....	dollars/cwt (NA)	15.80	16.80	16.40
Potatoes .....	dollars/cwt 5.82	9.06	7.39	7.26
Rice, all .....	dollars/cwt 7.07	14.70	14.40	14.80
Long .....	dollars/cwt (NA)	13.80	14.00	14.20
Medium and short .....	dollars/cwt (NA)	16.60	16.00	16.10
Sorghum grain .....	dollars/cwt 3.75	10.50	12.40	12.30
Soybeans .....	dollars/bushel 5.61	11.50	14.30	14.70
Sunflowers, all .....	dollars/cwt 9.50	29.60	26.30	25.40
Wheat, all .....	dollars/bushel 2.96	7.20	8.46	8.33
Winter .....	dollars/bushel 2.93	6.41	8.38	8.24
Durum .....	dollars/bushel 2.86	10.30	8.16	8.45
Other spring .....	dollars/bushel 3.11	8.25	8.65	8.45
Hard red winter <sup>1</sup> .....	dollars/bushel (NA)	6.54	8.48	(NA)
Soft red winter <sup>1</sup> .....	dollars/bushel (NA)	6.58	8.34	(NA)
Hard red spring <sup>1</sup> .....	dollars/bushel (NA)	8.43	8.70	(NA)
White <sup>1</sup> .....	dollars/bushel 3.24	6.13	8.14	(NA)
<b>Fruits</b>				
<b>Citrus, equivalent on-tree</b>				
Grapefruit .....	dollars/box 5.77	7.18	8.49	7.44
Lemons .....	dollars/box 10.10	14.29	14.57	11.95
Oranges .....	dollars/box 5.79	7.29	8.46	6.54
Tangelos .....	dollars/box 5.82	6.63	8.18	6.06
Tangerines and mandarins .....	dollars/box 15.11	20.11	17.60	22.63
<b>Noncitrus, fresh</b>				
Apples <sup>2</sup> .....	dollars/pound 0.212	0.302	0.479	0.474
Grapes <sup>2</sup> .....	dollars/ton 506.00	1,040.00	1,500.00	1,780.00
Peaches <sup>2</sup> .....	dollars/ton 432.00	(S)	(S)	(S)
Pears <sup>2</sup> .....	dollars/ton 370.00	474.00	686.00	713.00
Strawberries .....	dollars/cwt 56.00	153.00	139.00	170.00

(NA) Not available.

(S) Insufficient number of reports to establish an estimate.

<sup>1</sup> Preliminary estimates not set for this item.

<sup>2</sup> Equivalent packinghouse-door returns for California, Michigan, New York (apples only), and Washington (apples, peaches, and pears). Prices as sold for other states.



# Prices Received for Vegetables and Livestock – United States: December 2012 with Comparisons

[Price data source for livestock and poultry commodities is United States Department of Agriculture's Agricultural Marketing Service]

Commodity	Average 1990-1992	December 2011	November 2012	Preliminary December 2012
<b>Vegetables, fresh <sup>1</sup></b>				
Asparagus .....dollars/cwt	79.80	(S)	(S)	(S)
Beans, snap <sup>2</sup> .....dollars/cwt	(NA)	69.10	55.80	63.50
Broccoli .....dollars/cwt	22.50	51.60	35.40	25.00
Cantaloupes <sup>2</sup> .....dollars/cwt	(NA)	(S)	21.10	(S)
Carrots .....dollars/cwt	13.20	25.50	26.70	27.40
Cauliflower .....dollars/cwt	26.80	66.20	47.60	39.70
Celery .....dollars/cwt	11.60	14.90	20.30	21.50
Corn, sweet .....dollars/cwt	15.70	14.90	26.70	31.90
Cucumbers <sup>2</sup> .....dollars/cwt	(NA)	(S)	28.30	29.70
Lettuce .....dollars/cwt	11.90	17.40	20.10	12.40
Onions <sup>3</sup> .....dollars/cwt	12.80	9.48	12.40	16.00
Tomatoes .....dollars/cwt	32.30	26.50	45.10	52.70
<b>Livestock</b>				
Calves .....dollars/cwt	94.30	157.00	161.00	162.00
Cattle, all beef .....dollars/cwt	72.90	120.00	123.00	125.00
Cows <sup>4</sup> .....dollars/cwt	49.60	70.50	76.80	76.80
Steers and heifers .....dollars/cwt	77.10	126.00	128.00	130.00
Milk cows <sup>5</sup> .....dollars/head	1130.00	(NA)	(NA)	(NA)
Hogs, all .....dollars/cwt	47.70	63.50	61.10	62.90
Barrows and gilts .....dollars/cwt	48.40	63.70	61.20	63.20
Sows .....dollars/cwt	39.50	55.90	58.90	55.80
<b>Dairy and poultry</b>				
Milk, all <sup>6</sup> .....dollars/cwt	13.06	19.70	22.00	21.10
Fat test ..... percent	3.66	3.83	3.83	3.86
Broilers, live <sup>7</sup> .....dollars/pound	0.317	0.470	0.570	0.600
Eggs, all <sup>8</sup> .....dollars/dozen	0.643	1.220	1.190	1.130
Market <sup>8 9</sup> .....dollars/dozen	0.546	1.100	1.020	0.957
Turkeys, live <sup>8 10</sup> .....dollars/pound	0.380	0.715	0.751	0.669
<b>Adjusted for seasonal variation</b>				
Eggs, all .....dollars/dozen	0.545	1.000	1.050	0.930
Seasonal factor ..... percent	100	121	113	122
Milk, all <sup>6</sup> .....dollars/cwt	9.71	19.10	20.80	20.50
Seasonal factor ..... percent	100	103	106	103

(NA) Not available.

(S) Insufficient number of reports to establish an estimate.

<sup>1</sup> Beginning January 2006, point of first sale. FOB shipping point for prior years.

<sup>2</sup> Monthly estimates began January 1995.

<sup>3</sup> Includes some processing.

<sup>4</sup> Beef cows and cull dairy cows sold for slaughter.

<sup>5</sup> Animals sold for dairy herd replacement only. Prices available for January, April, July, and October.

<sup>6</sup> Before deductions for hauling. Includes quality, quantity, and other premiums. Excludes hauling subsidies.

<sup>7</sup> Live weight equivalent price.

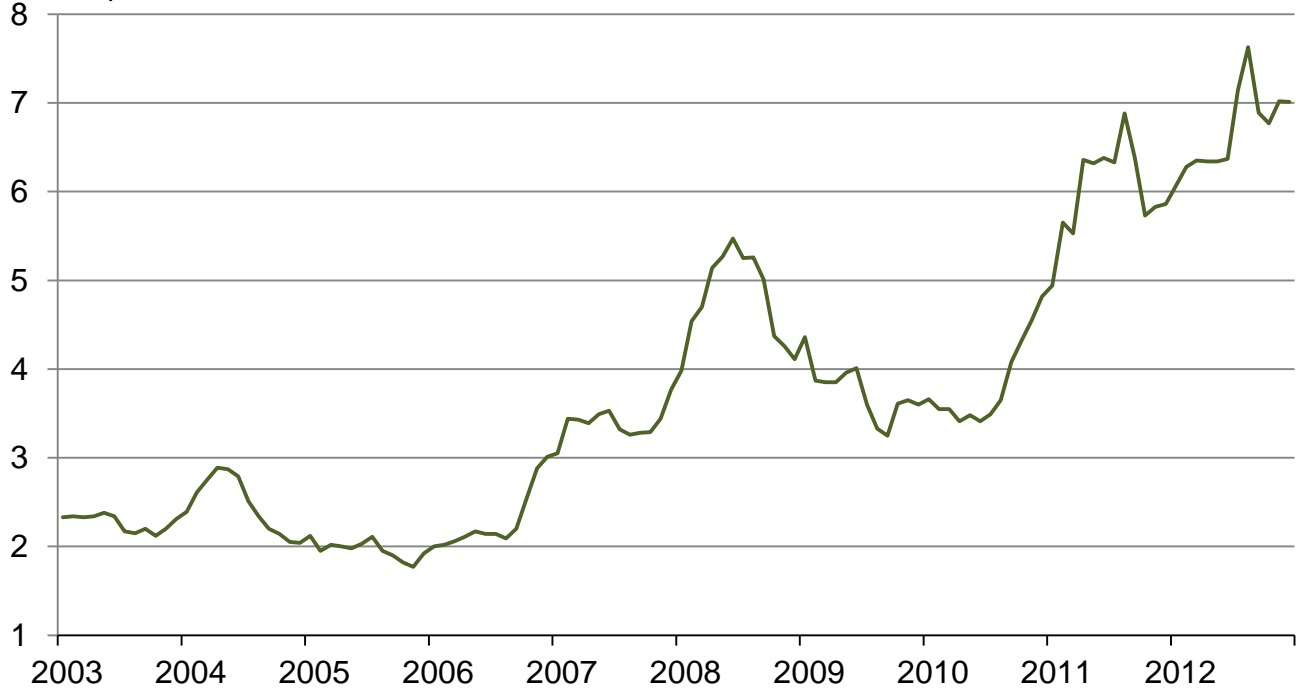
<sup>8</sup> Mid-month price.

<sup>9</sup> Also referred to as table eggs.

<sup>10</sup> Live weight equivalent price is used when actual live weight price is not available. Beginning January 2011, price reflects FOB shipping point basis. Prior year price reflects delivered basis.

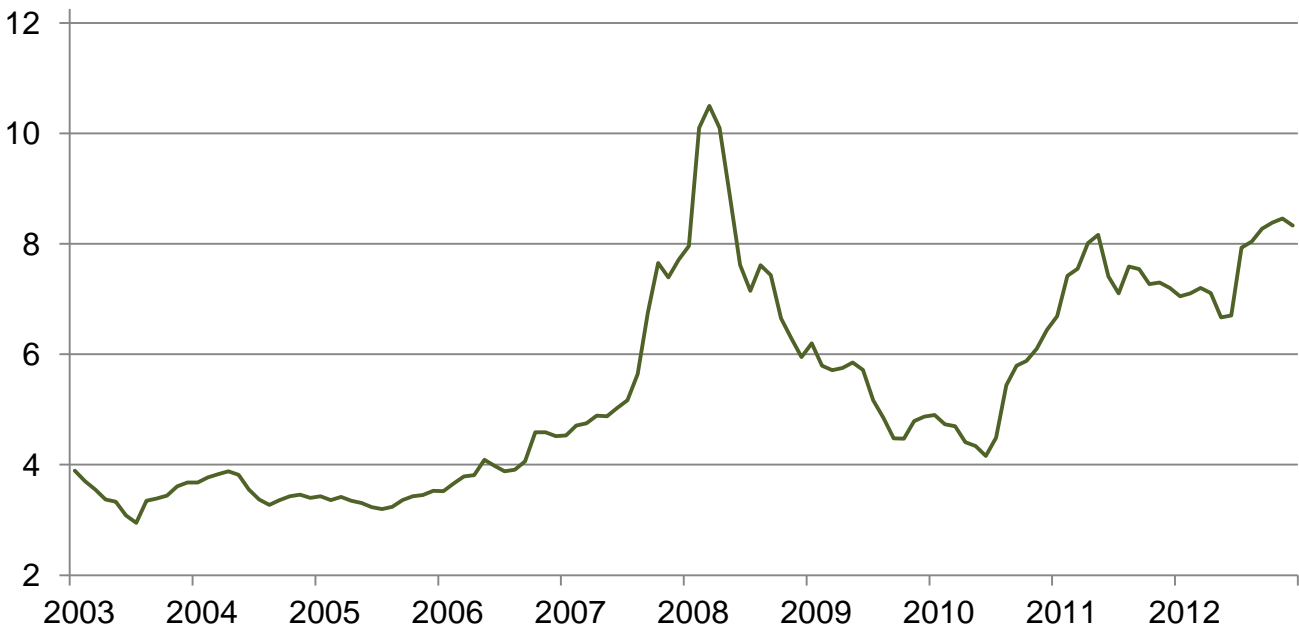
## Prices Received for Corn by Month – United States

Dollars per bushel



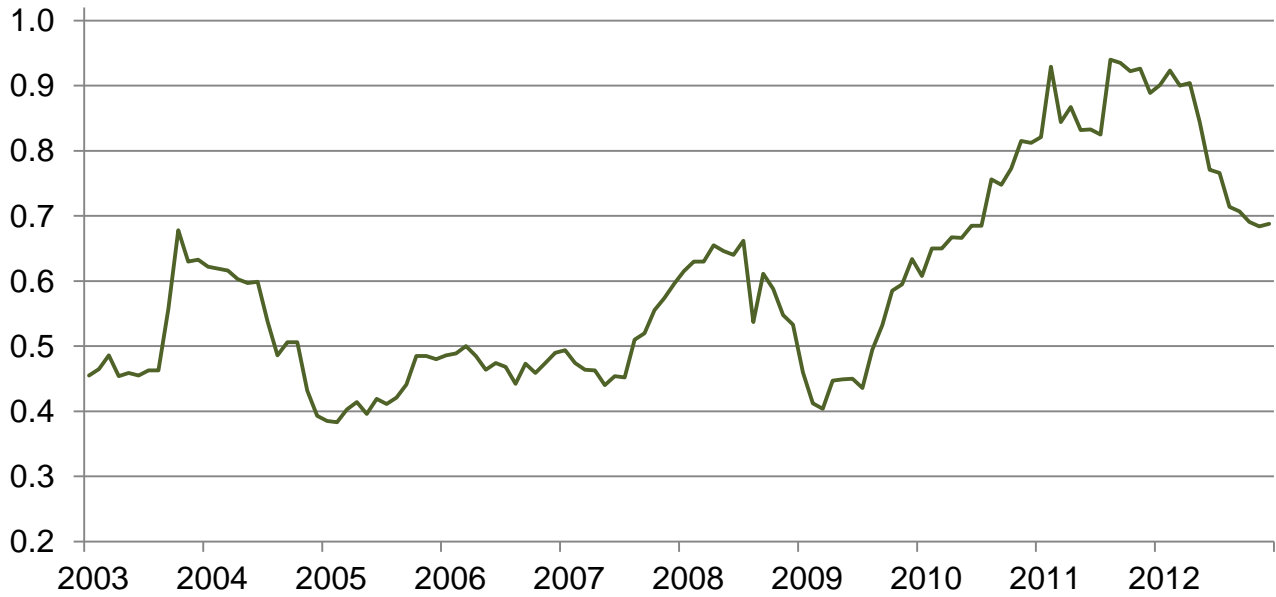
## Prices Received for Wheat by Month – United States

Dollars per bushel



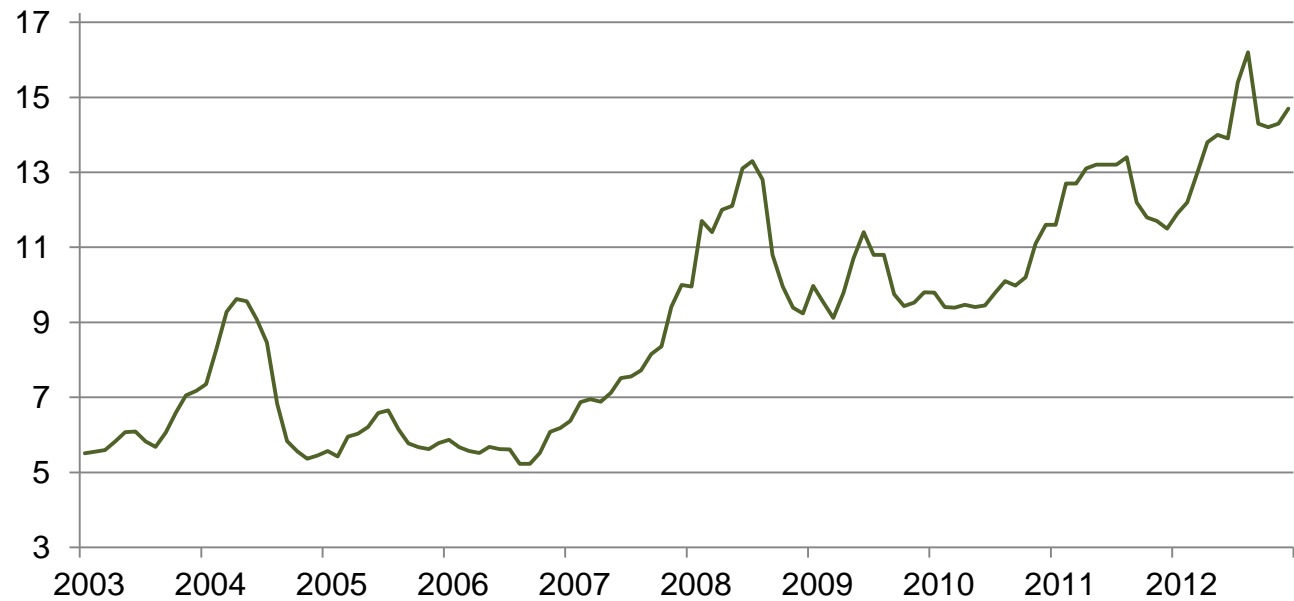
## Prices Received for Upland Cotton by Month – United States

Dollars per pound



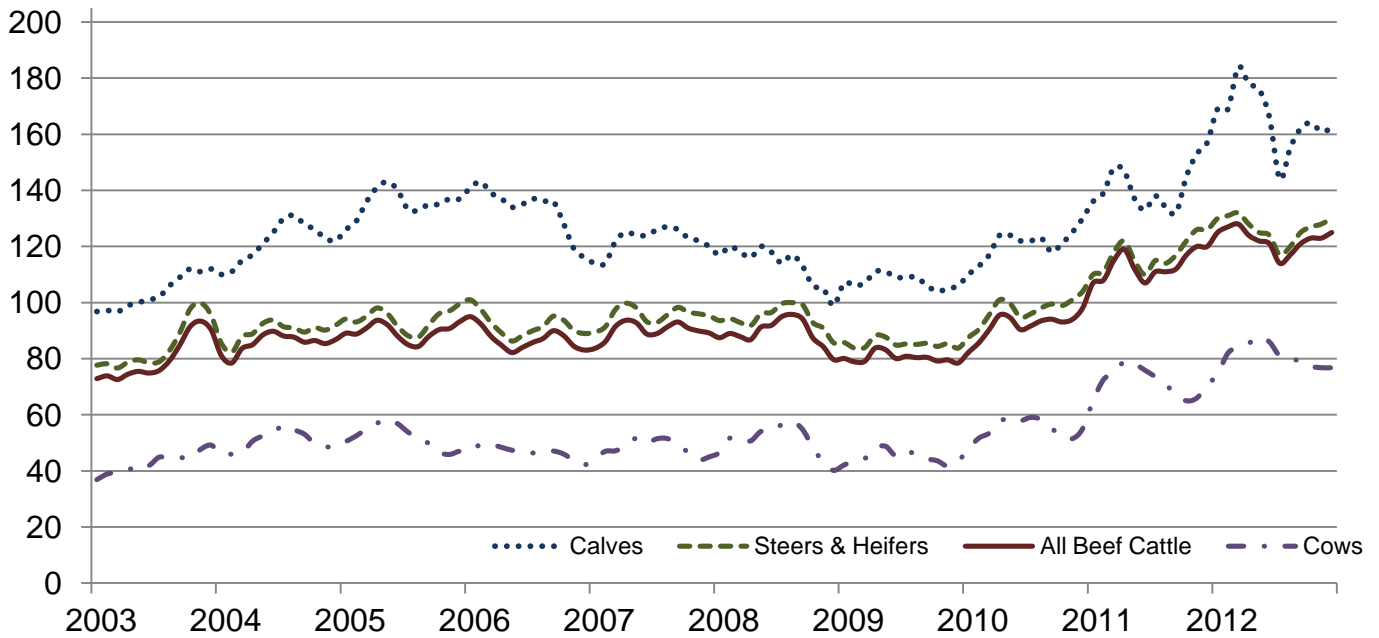
## Prices Received for Soybeans by Month – United States

Dollars per bushel



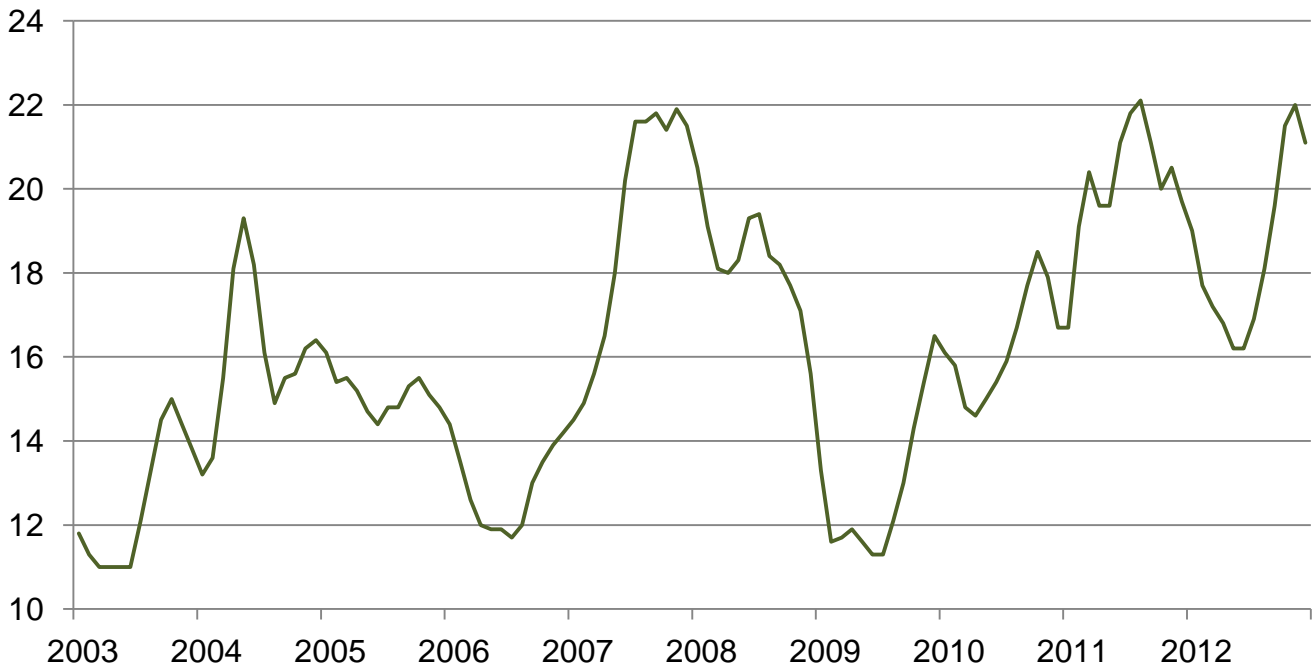
## Prices Received for Cattle by Month – United States

Dollars per cwt



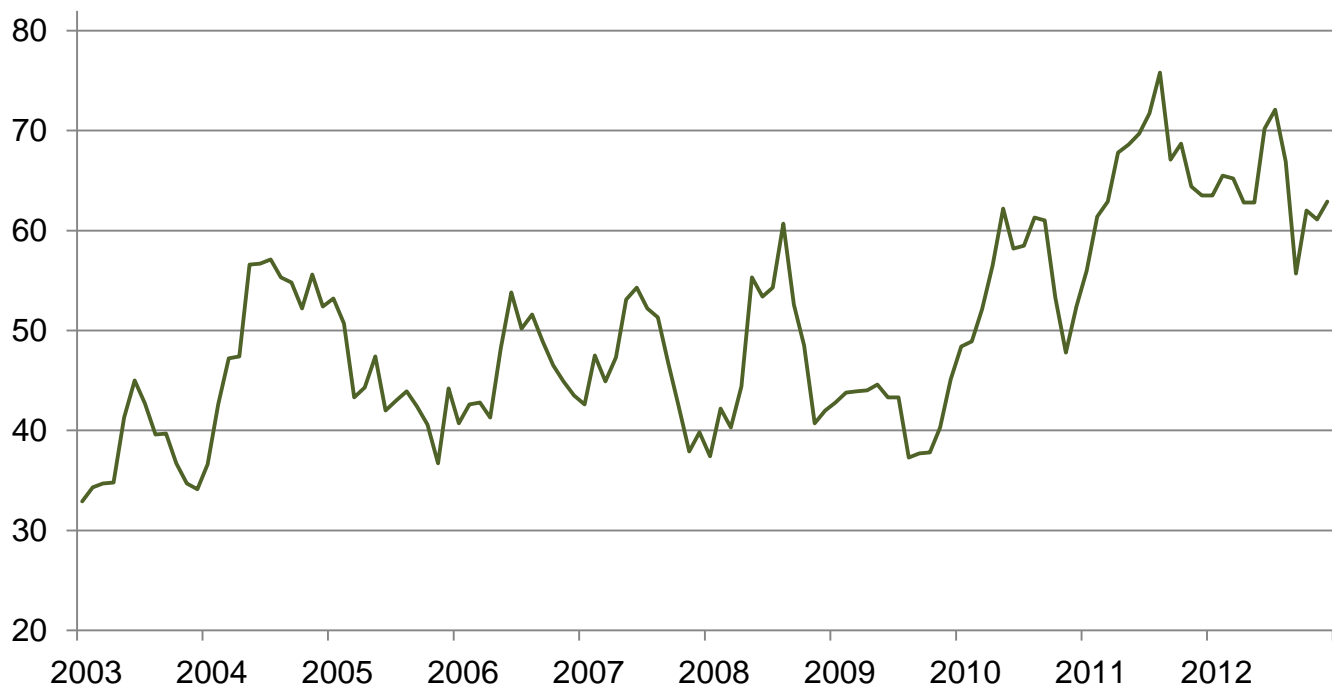
## Prices Received for Milk by Month – United States

Dollars per cwt



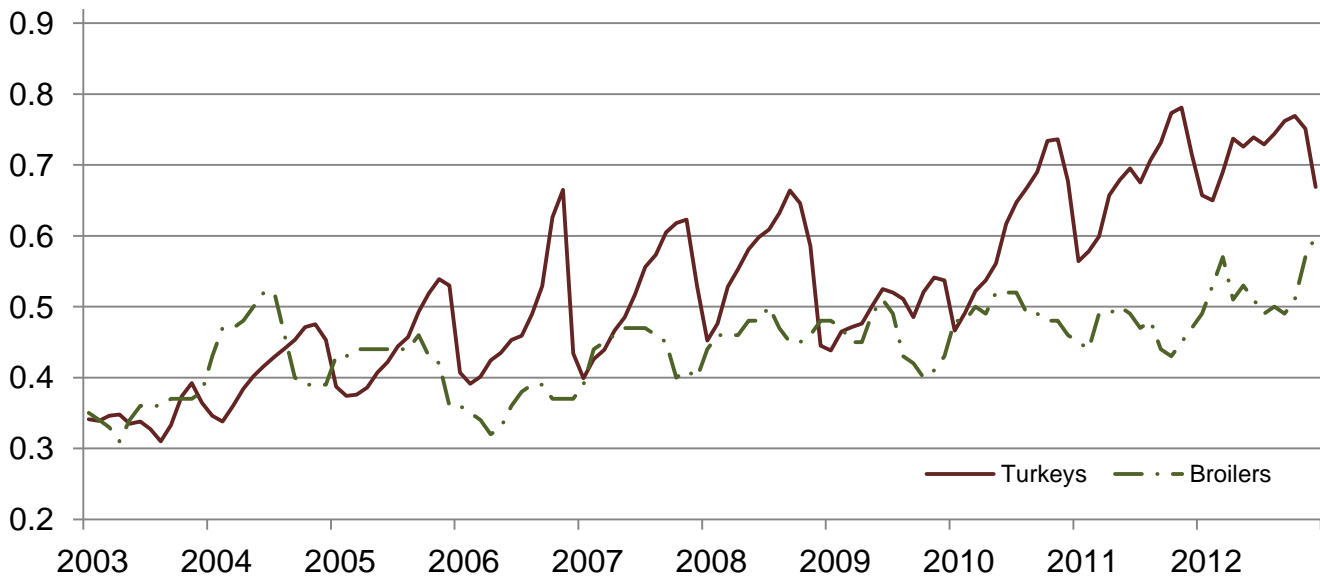
## Prices Received for Hogs by Month – United States

Dollars per cwt



## Prices Received for Poultry by Month – United States

Dollars per pound



## Prices Received for All Wheat, Corn, and Soybeans by Month – United States: 2012 with Comparisons

[Current month prices are mid-month; prices for previous months and years are for the entire month]

Month	All wheat			Corn			Soybeans		
	2010	2011	Preliminary 2012	2010	2011	Preliminary 2012	2010	2011	Preliminary 2012
	(dollars per bushel)	(dollars per bushel)	(dollars per bushel)	(dollars per bushel)	(dollars per bushel)	(dollars per bushel)	(dollars per bushel)	(dollars per bushel)	(dollars per bushel)
January .....	4.90	6.69	7.05	3.66	4.94	6.07	9.79	11.60	11.90
February .....	4.73	7.42	7.10	3.55	5.65	6.28	9.41	12.70	12.20
March .....	4.70	7.55	7.20	3.55	5.53	6.35	9.39	12.70	13.00
April .....	4.41	8.01	7.11	3.41	6.36	6.34	9.47	13.10	13.80
May .....	4.34	8.16	6.67	3.48	6.32	6.34	9.41	13.20	14.00
June .....	4.16	7.41	6.70	3.41	6.38	6.37	9.45	13.20	13.90
July .....	4.49	7.10	7.93	3.49	6.33	7.14	9.79	13.20	15.40
August .....	5.44	7.59	8.04	3.65	6.88	7.63	10.10	13.40	16.20
September ...	5.79	7.54	8.27	4.08	6.38	6.89	9.98	12.20	14.30
October .....	5.88	7.27	8.38	4.32	5.73	6.77	10.20	11.80	14.20
November ....	6.10	7.30	8.46	4.55	5.83	7.02	11.10	11.70	14.30
December ....	6.44	7.20	8.33	4.82	5.86	7.01	11.60	11.50	14.70

## Prices Received for Beef Cattle and All Hogs by Month – United States: 2012 with Comparisons

[Current month prices are mid-month; prices for previous months and years are for the entire month]

Month	Beef cattle <sup>1</sup>			All hogs <sup>2</sup>		
	2010	2011	Preliminary 2012	2010	2011	Preliminary 2012
	(dollars per cwt)	(dollars per cwt)	(dollars per cwt)	(dollars per cwt)	(dollars per cwt)	(dollars per cwt)
January .....	82.30	107.00	125.00	48.40	56.00	63.50
February .....	85.70	108.00	127.00	48.90	61.40	65.50
March .....	90.40	115.00	128.00	52.10	62.90	65.20
April .....	95.60	119.00	124.00	56.50	67.80	62.80
May .....	94.70	112.00	122.00	62.20	68.60	62.80
June .....	90.40	107.00	121.00	58.20	69.70	70.20
July .....	91.70	111.00	114.00	58.50	71.70	72.10
August .....	93.50	111.00	117.00	61.30	75.80	66.90
September .....	94.10	112.00	121.00	61.00	67.10	55.70
October .....	93.10	117.00	123.00	53.30	68.70	62.00
November .....	94.00	120.00	123.00	47.80	64.40	61.10
December .....	98.10	120.00	125.00	52.40	63.50	62.90

<sup>1</sup> Cows and steers & heifers.

<sup>2</sup> Barrows & gilts and sows.

## Prices Received for All Wheat – States and United States: December 2012 with Comparisons

State	December 2011	November 2012	Preliminary December 2012
	(dollars per bushel)	(dollars per bushel)	(dollars per bushel)
Arizona .....	(S)	(D)	(D)
Arkansas .....	(D)	8.36	(D)
California .....	(D)	8.13	(D)
Colorado .....	6.34	8.31	8.00
Idaho .....	6.63	8.34	8.50
Illinois .....	6.18	8.24	7.95
Indiana .....	6.72	8.63	7.90
Kansas .....	6.54	8.69	8.10
Michigan .....	6.12	8.28	7.65
Minnesota .....	8.31	8.52	8.50
Missouri .....	6.34	8.34	8.00
Montana .....	7.78	8.50	8.50
Nebraska .....	6.20	8.47	8.30
North Carolina .....	7.59	8.15	8.00
North Dakota .....	8.46	8.44	8.38
Ohio .....	6.35	8.41	7.84
Oklahoma .....	6.81	8.56	8.08
Oregon .....	6.66	8.70	8.56
South Dakota .....	7.85	8.56	8.34
Texas .....	6.12	8.04	8.55
Washington .....	6.36	8.33	8.35
United States .....	7.20	8.46	8.33

(D) Withheld to avoid disclosing data for individual operations.

(S) Insufficient number of reports to establish an estimate.

## Prices Received for Winter Wheat – States and United States: December 2012 with Comparisons

State	December 2011	November 2012	Preliminary December 2012
	(dollars per bushel)	(dollars per bushel)	(dollars per bushel)
Arkansas .....	(D)	8.36	(D)
California .....	(D)	8.13	(D)
Colorado .....	6.40	8.32	8.00
Idaho .....	6.29	8.27	8.65
Illinois .....	6.18	8.24	7.95
Indiana .....	6.72	8.63	7.90
Kansas .....	6.54	8.69	8.10
Michigan .....	6.12	8.28	7.65
Minnesota .....	(D)	(D)	(S)
Missouri .....	6.34	8.34	8.00
Montana .....	6.64	8.26	8.51
Nebraska .....	6.20	8.47	8.30
North Carolina .....	7.59	8.15	8.00
North Dakota .....	6.68	8.11	7.90
Ohio .....	6.35	8.41	7.84
Oklahoma .....	6.81	8.56	8.08
Oregon .....	6.48	8.37	8.50
South Dakota .....	6.83	8.38	8.25
Texas .....	6.12	8.04	8.55
Washington .....	6.08	8.22	8.25
United States .....	6.41	8.38	8.24

(D) Withheld to avoid disclosing data for individual operations.

(S) Insufficient number of reports to establish an estimate.

**Prices Received for Durum Wheat – States and United States: December 2012 with Comparisons**

State	December 2011	November 2012	Preliminary December 2012
	(dollars per bushel)	(dollars per bushel)	(dollars per bushel)
Arizona .....	(S)	(D)	(D)
California .....	(S)	(S)	(S)
Idaho .....	(D)	(D)	(D)
Montana .....	11.40	8.39	(D)
North Dakota .....	9.66	8.06	8.40
United States .....	10.30	8.16	8.45

(D) Withheld to avoid disclosing data for individual operations.

(S) Insufficient number of reports to establish an estimate.

**Prices Received for Spring Wheat – States and United States: December 2012 with Comparisons**

State	December 2011	November 2012	Preliminary December 2012
	(dollars per bushel)	(dollars per bushel)	(dollars per bushel)
Colorado .....	5.64	(D)	(S)
Idaho .....	7.26	8.49	8.25
Minnesota .....	8.31	8.52	8.50
Montana .....	8.46	8.79	(D)
North Dakota .....	8.43	8.60	8.40
Oregon .....	7.72	9.26	8.78
South Dakota .....	8.52	8.74	8.42
Washington .....	7.62	8.80	8.69
United States .....	8.25	8.65	8.45

(D) Withheld to avoid disclosing data for individual operations.

(S) Insufficient number of reports to establish an estimate.



### Prices Received for All Barley – States and United States: December 2012 with Comparisons

State	December 2011	November 2012	Preliminary December 2012
	(dollars per bushel)	(dollars per bushel)	(dollars per bushel)
California .....	(S)	(S)	(S)
Colorado .....	4.78	6.61	(S)
Idaho .....	5.81	6.56	6.57
Minnesota .....	(D)	(D)	(S)
Montana .....	5.33	6.42	6.18
North Dakota .....	5.59	6.34	5.93
Oregon .....	4.28	(D)	(D)
Utah .....	5.53	5.95	(D)
Washington .....	4.26	5.68	5.68
Wyoming .....	(D)	(D)	(D)
United States .....	5.46	6.45	6.17

(D) Withheld to avoid disclosing data for individual operations.

(S) Insufficient number of reports to establish an estimate.

### Prices Received for Malting Barley – States: December 2012 with Comparisons

State	December 2011	November 2012	Preliminary December 2012
	(dollars per bushel)	(dollars per bushel)	(dollars per bushel)
Idaho .....	5.85	6.63	(D)
Minnesota .....	(D)	(D)	(S)
Montana .....	5.36	6.52	(D)
North Dakota .....	5.63	6.53	6.00
Wyoming .....	(D)	(D)	(D)

(D) Withheld to avoid disclosing data for individual operations.

(S) Insufficient number of reports to establish an estimate.

### Prices Received for Feed Barley – States: December 2012 with Comparisons

State	December 2011	November 2012	Preliminary December 2012
	(dollars per bushel)	(dollars per bushel)	(dollars per bushel)
Idaho .....	4.39	5.79	(D)
Minnesota .....	4.08	(D)	(S)
Montana .....	4.94	5.61	(D)
North Dakota .....	5.35	5.43	5.50
Wyoming .....	(S)	(S)	(D)

(D) Withheld to avoid disclosing data for individual operations.

(S) Insufficient number of reports to establish an estimate.

**Prices Received for Corn – States and United States: December 2012 with Comparisons**

State	December 2011	November 2012	Preliminary December 2012
	(dollars per bushel)	(dollars per bushel)	(dollars per bushel)
Colorado .....	6.09	6.69	6.79
Illinois .....	5.92	7.12	7.20
Indiana .....	6.02	7.44	7.45
Iowa .....	5.78	7.02	7.00
Kansas .....	6.07	7.09	7.25
Kentucky .....	6.24	7.15	7.30
Michigan .....	5.64	6.71	6.80
Minnesota .....	5.52	6.86	6.90
Missouri .....	6.14	7.60	7.50
Nebraska .....	5.81	6.90	6.80
North Carolina .....	6.48	7.62	7.60
North Dakota .....	5.40	6.64	6.60
Ohio .....	6.04	7.18	7.13
Pennsylvania .....	6.63	7.19	7.16
South Dakota .....	5.65	6.82	6.80
Tennessee .....	6.30	7.47	7.40
Texas .....	6.52	6.83	7.33
Wisconsin .....	5.73	6.90	6.95
United States .....	5.86	7.02	7.01

**Prices Received for Soybeans – States and United States: December 2012 with Comparisons**

State	December 2011	November 2012	Preliminary December 2012
	(dollars per bushel)	(dollars per bushel)	(dollars per bushel)
Arkansas .....	11.80	14.50	14.90
Illinois .....	11.80	14.70	15.00
Indiana .....	11.90	14.60	15.00
Iowa .....	11.30	14.30	14.60
Kansas .....	11.00	14.10	14.40
Kentucky .....	11.70	14.40	15.00
Louisiana .....	11.70	14.50	14.60
Michigan .....	11.20	13.80	14.20
Minnesota .....	11.20	14.10	14.50
Mississippi .....	12.00	14.40	14.90
Missouri .....	11.80	14.30	14.80
Nebraska .....	11.20	14.00	14.10
North Carolina .....	11.30	13.80	14.50
North Dakota .....	11.10	13.90	14.10
Ohio .....	11.80	14.30	14.80
South Dakota .....	11.10	14.20	14.40
Tennessee .....	12.00	14.50	14.90
Wisconsin .....	11.40	14.20	14.50
United States .....	11.50	14.30	14.70

### Prices Received for Oats – States and United States: December 2012 with Comparisons

State	December 2011	November 2012	Preliminary December 2012
	(dollars per bushel)	(dollars per bushel)	(dollars per bushel)
Illinois .....	(S)	(D)	(D)
Iowa .....	4.23	3.92	3.90
Michigan .....	(D)	(D)	(D)
Minnesota .....	3.44	3.79	3.70
Montana .....	(D)	(D)	(D)
Nebraska .....	3.81	(D)	(D)
New York .....	(D)	(D)	(D)
North Dakota .....	2.94	3.17	(D)
Oregon .....	(S)	(S)	(S)
Pennsylvania .....	4.30	(D)	4.11
South Dakota .....	3.48	3.97	3.90
Texas .....	(S)	(S)	(S)
Wisconsin .....	3.90	4.26	4.25
United States .....	3.57	3.92	3.78

(D) Withheld to avoid disclosing data for individual operations.

(S) Insufficient number of reports to establish an estimate.

### Prices Received for Sorghum Grain – States and United States: December 2012 with Comparisons

State	December 2011	November 2012	Preliminary December 2012
	(dollars per cwt)	(dollars per cwt)	(dollars per cwt)
Arkansas .....	(D)	(D)	(D)
Illinois .....	(D)	11.40	(S)
Kansas .....	10.50	12.30	12.30
Louisiana .....	(D)	(D)	(S)
Missouri .....	10.80	12.40	12.00
Nebraska .....	9.74	12.20	12.10
Oklahoma .....	10.50	12.10	11.80
Texas .....	11.80	12.80	12.50
United States .....	10.50	12.40	12.30

(D) Withheld to avoid disclosing data for individual operations.

(S) Insufficient number of reports to establish an estimate.

**Prices Received for Dry Beans – States and United States: December 2012 with Comparisons**

State	December 2011	November 2012	Preliminary December 2012
	(dollars per cwt)	(dollars per cwt)	(dollars per cwt)
California .....	51.20	54.70	55.20
Colorado .....	44.10	38.50	37.00
Idaho .....	42.40	40.60	39.30
Michigan .....	49.50	38.10	37.50
Minnesota .....	41.80	45.80	44.00
Nebraska .....	43.00	37.50	37.00
North Dakota .....	39.40	36.90	33.70
United States .....	42.00	39.20	36.70

**Prices Received for Peanuts (in shell) – States and United States: December 2012 with Comparisons**

State	December 2011	November 2012	Preliminary December 2012
	(dollars per pound)	(dollars per pound)	(dollars per pound)
Alabama .....	0.281	0.272	0.320
Florida .....	0.265	(D)	0.263
Georgia .....	0.302	0.327	0.338
Mississippi .....	0.237	(D)	(D)
New Mexico .....	(S)	(S)	(S)
North Carolina .....	0.367	0.358	0.353
Oklahoma .....	0.326	(D)	(D)
South Carolina .....	0.314	0.336	0.323
Texas .....	0.447	0.350	0.416
Virginia .....	0.303	0.349	0.324
United States .....	0.308	0.328	0.344

(D) Withheld to avoid disclosing data for individual operations.

(S) Insufficient number of reports to establish an estimate.

### Prices Received for Sunflower – States and United States: December 2012 with Comparisons

State	December 2011	November 2012	Preliminary December 2012
	(dollars per cwt)	(dollars per cwt)	(dollars per cwt)
Colorado .....	30.90	(D)	(D)
Kansas .....	28.30	33.40	30.90
Minnesota .....	30.80	31.30	(D)
North Dakota .....	31.00	26.20	26.70
South Dakota .....	28.10	23.90	(D)
United States .....	29.60	26.30	25.40

(D) Withheld to avoid disclosing data for individual operations.

### Prices Received for Canola – States and United States: December 2012 with Comparisons

State	December 2011	November 2012	Preliminary December 2012
	(dollars per cwt)	(dollars per cwt)	(dollars per cwt)
Minnesota .....	24.30	(D)	(S)
North Dakota .....	22.90	26.70	27.30
United States .....	23.00	26.70	27.30

(D) Withheld to avoid disclosing data for individual operations.

(S) Insufficient number of reports to establish an estimate.

### Prices Received for Flaxseed – States and United States: December 2012 with Comparisons

State	December 2011	November 2012	Preliminary December 2012
	(dollars per bushel)	(dollars per bushel)	(dollars per bushel)
North Dakota .....	13.50	14.10	14.30
United States .....	13.50	14.10	14.30

### Prices Received for Hops – States and United States: 2010 through 2012

State	2010	2011	2012
	(dollars per pound)	(dollars per pound)	(dollars per pound)
Idaho .....	3.89	2.93	2.69
Oregon .....	3.96	3.79	3.99
Washington .....	3.11	3.06	3.19
United States .....	3.28	3.14	3.27

## Prices Received for Upland Cotton and Cottonseed – States and United States: December 2012 with Comparisons

[Cottonseed marketing year August - February]

State	Cotton, Upland			Cottonseed		
	December 2011	November 2012	Preliminary December 2012	December 2011	November 2012	Preliminary December 2012
	(dollars per pound)	(dollars per pound)	(dollars per pound)	(dollars per ton)	(dollars per ton)	(dollars per ton)
Alabama .....	0.855	0.672	0.634	208.00	198.00	206.00
Arizona .....	0.941	0.772	(D)	309.00	269.00	280.00
Arkansas .....	0.939	0.684	(D)	239.00	246.00	(S)
California .....	1.180	(D)	(D)	350.00	365.00	369.00
Georgia .....	0.945	0.738	0.729	206.00	213.00	210.00
Louisiana .....	0.886	0.641	0.692	(S)	(S)	(S)
Mississippi .....	0.948	0.697	(D)	263.00	267.00	(S)
North Carolina .....	0.889	0.662	0.640	188.00	233.00	222.00
Tennessee .....	0.913	0.737	0.709	270.00	258.00	260.00
Texas .....	0.830	0.672	0.680	325.00	268.00	269.00
United States .....	0.889	0.684	0.688	264.00	257.00	254.00

(D) Withheld to avoid disclosing data for individual operations.

(S) Insufficient number of reports to establish an estimate.

## Prices Received and Farm Marketings for Upland Cotton and Rice – United States: December 2012 with Comparisons

Item	December 2011	November 2012	Preliminary December 2012
Cotton, Upland			
Average price ..... dollars/pound	0.889	0.684	0.688
Marketings <sup>1</sup> ..... 1,000 bales	1,990	2,769	(NA)
Rice, all			
Average price ..... dollars/cwt	14.70	14.40	14.80
Marketings <sup>2</sup> ..... 1,000 cwt	14,954	15,772	(NA)
Rice, long			
Average price ..... dollars/cwt	13.80	14.00	14.20
Marketings <sup>2</sup> ..... 1,000 cwt	9,947	12,784	(NA)
Rice, medium and short			
Average price ..... dollars/cwt	16.60	16.00	16.10
Marketings <sup>2</sup> ..... 1,000 cwt	5,007	2,988	(NA)

(NA) Not available.

<sup>1</sup> Marketings based on a survey of cotton buyers in the major producing States - Alabama, Arizona, Arkansas, California, Georgia, Louisiana, Mississippi, North Carolina, Tennessee, and Texas.

<sup>2</sup> Purchases by private firms and rice (rough equivalent) shipped by cooperatives.

## Prices Received for Hay by Type – States and United States: December 2012 with Comparisons

State	All hay			Alfalfa hay			Other hay		
	December 2011	November 2012	Preliminary December 2012	December 2011	November 2012	Preliminary December 2012	December 2011	November 2012	Preliminary December 2012
	(dollars per ton)	(dollars per ton)	(dollars per ton)	(dollars per ton)	(dollars per ton)	(dollars per ton)	(dollars per ton)	(dollars per ton)	(dollars per ton)
Arizona .....	248.00	196.00	191.00	250.00	195.00	190.00	200.00	215.00	210.00
California .....	231.00	205.00	203.00	240.00	212.00	209.00	200.00	180.00	180.00
Colorado .....	223.00	234.00	244.00	230.00	235.00	245.00	160.00	220.00	235.00
Idaho .....	224.00	197.00	198.00	228.00	200.00	200.00	150.00	140.00	140.00
Illinois .....	170.00	159.00	165.00	180.00	180.00	190.00	150.00	130.00	140.00
Iowa .....	126.00	204.00	197.00	142.00	213.00	220.00	93.00	137.00	145.00
Kansas .....	186.00	202.00	209.00	215.00	235.00	235.00	105.00	125.00	130.00
Kentucky .....	114.00	107.00	115.00	190.00	195.00	200.00	90.00	85.00	90.00
Michigan .....	112.00	237.00	215.00	120.00	240.00	220.00	90.00	230.00	200.00
Minnesota .....	126.00	216.00	224.00	140.00	225.00	245.00	80.00	130.00	155.00
Missouri .....	99.00	129.00	128.00	250.00	220.00	220.00	75.00	110.00	110.00
Montana .....	99.00	156.00	155.00	99.00	162.00	159.00	96.00	126.00	130.00
Nebraska .....	120.00	205.00	211.00	131.00	228.00	232.00	94.00	144.00	159.00
Nevada .....	226.00	209.00	204.00	230.00	210.00	205.00	160.00	185.00	174.00
New Mexico .....	299.00	233.00	229.00	305.00	240.00	236.00	227.00	179.00	175.00
New York .....	96.00	156.00	146.00	105.00	215.00	242.00	95.00	151.00	138.00
North Dakota .....	78.00	138.00	131.00	80.00	140.00	134.00	54.00	84.00	83.00
Ohio .....	138.00	224.00	213.00	183.00	279.00	262.00	85.00	187.00	181.00
Oklahoma .....	135.00	193.00	194.00	234.00	238.00	245.00	131.00	125.00	132.00
Oregon .....	213.00	213.00	202.00	250.00	222.00	222.00	175.00	200.00	177.00
Pennsylvania .....	138.00	179.00	188.00	194.00	221.00	238.00	130.00	157.00	154.00
South Dakota .....	137.00	209.00	213.00	147.00	226.00	230.00	97.00	147.00	155.00
Texas .....	188.00	119.00	112.00	270.00	255.00	251.00	169.00	97.00	93.00
Utah .....	191.00	179.00	189.00	192.00	182.00	192.00	154.00	147.00	154.00
Washington .....	225.00	232.00	228.00	240.00	235.00	230.00	200.00	225.00	225.00
Wisconsin .....	122.00	179.00	220.00	130.00	190.00	235.00	90.00	120.00	155.00
Wyoming .....	141.00	212.00	211.00	145.00	215.00	215.00	125.00	200.00	200.00
United States .....	174.00	193.00	192.00	195.00	215.00	217.00	131.00	144.00	142.00

## Prices Received for Apples – States and United States: December 2012 with Comparisons

[Equivalent packinghouse-door returns for California, Michigan, New York, and Washington. Prices at point of first sale for other States]

State	Apples, fresh use		
	December 2011	November 2012	Preliminary December 2012
	(dollars per pound)	(dollars per pound)	(dollars per pound)
California .....	(NA)	0.368	(NA)
Michigan .....	0.350	0.545	(NA)
New York .....	0.359	0.514	0.501
Ohio .....	0.420	0.760	0.600
Pennsylvania .....	0.285	0.575	0.558
Virginia .....	0.330	0.620	0.610
Washington .....	0.380	0.463	0.456
United States .....	0.302	0.479	0.474

(NA) Not available.

## Prices Received for Citrus Fruits by Utilization – States and United States: December 2011

[Net pounds per box: grapefruit in California-80, Florida-85, Texas-80; lemons-80; oranges in California-80, Florida-90, Texas-85; tangelos-90; tangerines and mandarins in Arizona and California-80, Florida-95]

Commodity, State, and type	FOB packed fresh	Equivalent returns					
		Packinghouse door			On-tree		
		All	Fresh	Process	All	Fresh	Process
	(dollars per box)	(dollars per box)	(dollars per box)	(dollars per box)	(dollars per box)	(dollars per box)	(dollars per box)
Grapefruit							
California <sup>1</sup> .....	14.50	7.97	7.97	(D)	5.83	5.83	(D)
Florida .....	23.50	9.94	12.70	7.10	7.26	10.46	3.98
White .....	26.80	9.61	15.85	6.85	6.99	13.65	4.05
Colored .....	23.00	10.02	12.25	7.20	7.33	10.00	3.95
Texas .....	23.70	8.75	12.50	1.60	7.25	10.95	0.20
United States .....	22.70	9.53	12.17	6.02	7.18	10.14	3.24
Lemons							
Arizona .....	(D)	(D)	(D)	(D)	(D)	(D)	(D)
California .....	36.90	20.28	25.78	(D)	14.29	19.79	(D)
United States .....	36.90	20.28	25.76	(D)	14.29	19.77	(D)
Oranges							
California .....	24.80	14.25	15.99	(D)	11.77	13.53	(D)
Navel and miscellaneous .....	24.80	14.25	15.99	(D)	11.77	13.53	(D)
Florida .....	22.80	8.88	11.65	8.74	6.37	9.05	6.24
Early and mids .....	22.80	8.88	11.65	8.74	6.37	9.05	6.24
United States .....	24.50	9.78	15.00	8.55	7.29	12.56	6.05
Tangelos							
Florida .....	20.50	9.41	8.85	9.75	6.63	6.10	6.95
United States .....	20.50	9.41	8.85	9.75	6.63	6.10	6.95
Tangerines and mandarins							
Arizona .....	(D)	(D)	(D)	(NA)	(D)	(D)	(NA)
California .....	(D)	(D)	(D)	(D)	(D)	(D)	(D)
Florida .....	24.30	10.45	10.90	9.55	6.61	7.35	5.15
United States .....	39.40	23.35	29.78	4.35	20.11	26.88	0.08

(D) Withheld to avoid disclosing data for individual operations.

(NA) Not available.

<sup>1</sup> Some processed sales included in fresh sales.



## Prices Received for Citrus Fruits by Utilization – States and United States: November 2012

[Net pounds per box: grapefruit in California-80, Florida-85, Texas-80; lemons-80; oranges in California-80, Florida-90, Texas-85; tangelos-90; tangerines and mandarins in Arizona and California-80, Florida-95]

Commodity, State, and type	FOB packed fresh	Equivalent returns					
		Packinghouse door			On-tree		
		All	Fresh	Process	All	Fresh	Process
	(dollars per box)	(dollars per box)	(dollars per box)	(dollars per box)	(dollars per box)	(dollars per box)	(dollars per box)
Grapefruit							
California <sup>1</sup> .....	18.60	11.94	11.94	(D)	9.76	9.76	(D)
Florida .....	24.00	9.66	13.22	2.95	7.10	10.97	-0.19
White .....	27.80	9.44	16.85	2.95	6.92	14.65	0.15
Colored .....	23.50	9.70	12.75	2.95	7.14	10.50	-0.30
Texas .....	29.70	15.38	18.30	1.60	13.83	16.72	0.17
United States .....	25.00	10.84	14.29	2.80	8.49	12.20	-0.15
Lemons							
Arizona .....	(D)	(D)	(D)	(D)	(D)	(D)	(D)
California .....	32.20	20.11	23.12	(D)	14.39	17.22	(D)
United States .....	32.30	20.29	23.26	(D)	14.57	17.36	(D)
Oranges							
California .....	26.70	16.09	17.71	(D)	13.57	15.20	(D)
Navel and miscellaneous .....	26.70	16.09	17.71	(D)	13.57	15.20	(D)
Florida .....	24.60	7.91	13.45	6.50	5.39	10.85	4.00
Early and mids .....	24.60	7.91	13.45	6.50	5.39	10.85	4.00
United States .....	26.10	10.99	16.55	6.15	8.46	14.01	3.64
Tangelos							
Florida .....	25.00	10.94	13.35	6.45	8.18	10.60	3.65
United States .....	25.00	10.94	13.35	6.45	8.18	10.60	3.65
Tangerines and mandarins							
Arizona .....	(D)	(D)	(D)	(D)	(D)	(D)	(D)
California .....	(D)	(D)	(D)	(D)	(D)	(D)	(D)
Florida .....	30.90	14.00	17.50	4.75	10.22	13.95	0.35
United States .....	37.50	20.88	27.03	2.56	17.60	23.98	-1.44

(D) Withheld to avoid disclosing data for individual operations.

<sup>1</sup> Some processed sales included in fresh sales.

## Prices Received for Citrus Fruits by Utilization – States and United States: December 2012

[Net pounds per box: grapefruit in California-80, Florida-85, Texas-80; lemons-80; oranges in California-80, Florida-90, Texas-85; tangelos-90; tangerines and mandarins in Arizona and California-80, Florida-95]

Commodity, State, and type	FOB packed fresh	Equivalent returns					
		Packinghouse door			On-tree		
		All	Fresh	Process	All	Fresh	Process
	(dollars per box)	(dollars per box)	(dollars per box)	(dollars per box)	(dollars per box)	(dollars per box)	(dollars per box)
<b>Grapefruit</b>							
California <sup>1</sup> .....	11.20	4.54	4.54	(D)	2.36	2.36	(D)
Florida .....	23.70	9.58	12.90	3.57	7.01	10.66	0.40
White .....	26.60	10.23	15.65	3.90	7.75	13.45	1.10
Colored .....	23.30	9.48	12.55	3.50	6.89	10.30	0.25
Texas .....	28.90	13.61	17.50	1.60	12.07	15.92	0.17
United States .....	23.20	9.82	12.76	3.33	7.44	10.64	0.37
<b>Lemons</b>							
Arizona .....	(D)	(D)	(D)	(D)	(D)	(D)	(D)
California .....	31.40	17.81	22.32	(D)	12.19	16.42	(D)
United States .....	31.40	17.55	22.36	(D)	11.95	16.46	(D)
<b>Oranges</b>							
California .....	24.40	14.23	15.41	(D)	11.70	12.90	(D)
Navel and miscellaneous .....	24.40	14.23	15.41	(D)	11.70	12.90	(D)
Florida .....	26.80	8.00	15.65	7.60	5.49	13.05	5.10
Early and mids .....	26.80	8.00	15.65	7.60	5.49	13.05	5.10
United States .....	24.90	9.05	15.46	7.48	6.54	12.93	4.98
<b>Tangelos</b>							
Florida .....	23.10	8.83	11.45	6.35	6.06	8.70	3.55
United States .....	23.10	8.83	11.45	6.35	6.06	8.70	3.55
<b>Tangerines and mandarins</b>							
Arizona .....	(D)	(D)	(D)	(NA)	(D)	(D)	(NA)
California .....	(D)	(D)	(D)	(D)	(D)	(D)	(D)
Florida .....	36.60	18.26	23.20	6.30	14.46	19.65	1.90
United States .....	40.20	25.65	31.04	1.48	22.63	28.21	-2.39

(D) Withheld to avoid disclosing data for individual operations.

(NA) Not available.

<sup>1</sup> Some processed sales included in fresh sales.

**Prices Received for Potatoes – States and United States: December 2012 with Comparisons**

State	December 2011	November 2012	Preliminary December 2012
	(dollars per cwt)	(dollars per cwt)	(dollars per cwt)
California			
Spring .....	(S)	(S)	(S)
Fall .....	8.75	6.85	6.95
All <sup>1</sup> .....	8.75	6.85	6.95
Colorado			
Fresh <sup>2</sup> .....	12.00	7.00	(D)
All <sup>1</sup> .....	11.00	6.55	6.55
Florida .....	(S)	(S)	(S)
Idaho			
Fresh <sup>2</sup> .....	7.60	4.50	(D)
Processing .....	7.60	7.10	(D)
All <sup>1</sup> .....	7.60	5.95	5.80
Maine .....	10.20	10.20	10.60
Michigan .....	11.90	11.50	11.90
Minnesota .....	8.50	6.30	(D)
New York .....	13.40	13.00	12.70
North Carolina .....	(S)	(S)	(S)
North Dakota			
Fresh <sup>2</sup> .....	18.40	9.40	(D)
Processing .....	7.00	9.15	(D)
All <sup>1</sup> .....	9.40	9.30	(D)
Oregon .....	8.20	6.80	6.80
Texas .....	(S)	(S)	(S)
Virginia .....	(S)	(S)	(S)
Washington			
Processing .....	8.10	6.85	6.95
All <sup>1</sup> .....	8.85	7.00	7.05
Wisconsin			
Fresh <sup>2</sup> .....	10.90	7.05	(D)
Processing .....	9.05	9.65	(D)
All <sup>1</sup> .....	9.95	8.45	(D)
United States			
Fresh <sup>2</sup> .....	10.86	6.63	(D)
Processing .....	8.10	7.83	(D)
All <sup>1</sup> .....	9.06	7.39	7.26

(D) Withheld to avoid disclosing data for individual operations.

(S) Insufficient number of reports to establish an estimate.

<sup>1</sup> Average price of potatoes sold for all uses, including table stock, processing, seed, and livestock feed.

<sup>2</sup> Fresh market prices only. Includes table stock prices.

## Prices Received for All Milk – States and United States: December 2012 with Comparisons

[Before deduction for hauling. Includes quality, quantity, and other premiums. Excludes hauling subsidies]

State	December 2011		November 2012		Preliminary December 2012	
	Price (dollars per cwt)	Fat test (percent)	Price (dollars per cwt)	Fat test (percent)	Price (dollars per cwt)	Fat test (percent)
Arizona .....	19.10	3.68	21.00	3.63	20.70	3.67
California .....	17.40	3.84	19.82	3.78	18.80	3.84
Colorado .....	19.10	3.69	22.20	3.70	21.50	3.72
Florida .....	23.20	3.69	25.70	3.76	26.40	3.75
Idaho .....	18.40	3.78	21.20	3.83	19.50	3.85
Illinois .....	20.70	3.94	23.50	3.89	23.10	3.94
Indiana .....	20.40	3.81	22.50	3.84	22.10	3.87
Iowa .....	20.40	3.85	23.10	3.91	22.90	3.92
Kansas .....	20.40	3.94	22.70	3.84	22.50	3.91
Michigan .....	20.60	3.76	22.40	3.80	22.20	3.81
Minnesota .....	21.00	3.90	23.30	3.93	21.70	3.94
Missouri .....	20.50	3.83	22.80	3.86	22.70	3.88
New Mexico .....	18.80	3.71	20.70	3.73	20.70	3.75
New York .....	20.70	3.82	22.80	3.85	22.20	3.85
Ohio .....	21.10	3.85	23.10	3.89	22.70	3.95
Oregon .....	21.50	3.89	23.80	3.92	23.00	3.93
Pennsylvania .....	21.40	3.80	23.60	3.85	23.10	3.85
Texas .....	20.00	3.93	22.00	3.93	22.00	3.95
Utah .....	19.00	3.86	21.80	3.84	21.00	3.88
Vermont .....	21.20	3.88	23.10	3.88	22.60	3.89
Virginia .....	22.10	3.85	24.70	3.87	24.40	3.84
Washington .....	19.90	3.89	22.00	3.92	21.10	3.93
Wisconsin .....	20.90	3.84	23.20	3.88	21.40	3.88
United States .....	19.70	3.83	22.00	3.83	21.10	3.86

## Prices Received for Milk Cows – States and United States: October 2012 with Comparisons

[Animals sold for dairy herd replacement only. Prices estimated in January, April, July, and October]

State	October 2011 (dollars per head)	July 2012 (dollars per head)	October 2012 (dollars per head)
Arizona .....	1,550	1,450	1,450
California .....	1,400	1,300	1,300
Colorado .....	1,550	1,430	1,430
Florida .....	1,620	1,440	1,470
Idaho .....	1,450	1,400	1,400
Illinois .....	1,460	1,490	1,420
Indiana .....	1,550	1,400	1,350
Iowa .....	1,450	1,470	1,410
Kansas .....	1,400	1,400	1,300
Michigan .....	1,600	1,600	1,500
Minnesota .....	1,440	1,410	1,350
Missouri .....	1,270	1,200	1,100
New Mexico .....	1,480	1,350	1,400
New York .....	1,450	1,460	1,410
Ohio .....	1,510	1,460	1,380
Oregon .....	1,430	1,420	1,360
Pennsylvania .....	1,550	1,460	1,430
Texas .....	1,400	1,400	1,370
Utah .....	1,380	1,290	1,240
Vermont .....	1,650	1,550	1,550
Virginia .....	1,490	1,500	1,470
Washington .....	1,450	1,300	1,300
Wisconsin .....	1,560	1,560	1,460
United States .....	1,480	1,420	1,390

## Commodity Parity Prices and Price as Percent of Parity Price – United States: December 2012 with Comparisons

[Parity prices are computed under the provisions of Title III, Subtitle a, Section 301 (a) of the Agricultural Adjustment Act of 1938 as amended by the Agricultural Acts of 1948, 1949, and 1956. See January *Agricultural Prices* for details on adjusted base price and parity price computations. Parity data not available for blank cells. Primary source of data for livestock and milk prices is United States Department of Agriculture's Agricultural Marketing Service]

Commodity and unit	Adjusted base price	Parity price			Price as percent of parity			
		December 2011	November 2012	December 2012	December 2011	November 2012	December 2012	
	(dollars)	(dollars)	(dollars)	(dollars)	(percent)	(percent)	(percent)	
<b>Basic commodities</b>								
All wheat .....	bushel	0.634	16.60	18.30	18.30	43	46	46
Rice .....	cwt	1.46	44.60	42.20	42.20	33	34	35
Corn .....	bushel	0.414	10.50	12.00	12.00	56	59	58
<b>Cotton</b>								
Upland .....	pound	0.072	1.94	2.08	2.08	46	33	33
American Pima .....	pound	0.141	3.53	4.08	4.07	51	36	36
Peanuts .....	pound	0.026	0.739	0.752	0.751	42	44	46
<b>Designated nonbasic</b>								
All milk, to plants <sup>1</sup> .....	cwt	1.80	49.80	52.10	52.00	38	40	39
Honey, extracted <sup>2</sup> .....	pound	0.139	3.67	4.02	4.01	47	43	43
<b>Wool and mohair</b>								
Wool .....	pound	0.104	2.52	3.01	3.00	46	55	56
Mohair .....	pound	0.333	8.86	9.63	9.62	39	43	43
<b>Other nonbasic</b>								
Apples, fresh <sup>3</sup> .....	pound	0.033	0.903	0.955	0.953	33	50	50
Barley .....	bushel	0.436	11.60	12.60	12.60	47	51	49
Canola .....	cwt	1.820	47.60	52.70	52.60	48	51	52
Cottonseed .....	ton	17.40	421.00	503.00	503.00	63	51	50
Dry edible beans .....	cwt	3.01	79.90	87.10	86.90	53	45	42
Flaxseed .....	bushel	1.100	27.90	31.80	31.80	48	44	45
Oats .....	bushel	0.263	6.84	7.61	7.60	52	52	50
Potatoes .....	cwt	0.855	22.80	24.70	24.70	40	30	29
Sorghum grain .....	cwt	0.729	18.50	21.10	21.10	57	59	58
Soybeans .....	bushel	1.000	25.90	28.90	28.90	44	49	51
Sunflower, all .....	cwt	2.06	52.30	59.60	59.50	57	44	43
<b>Citrus (equivalent on-tree)</b>								
Grapefruit .....	box	0.690	18.10	20.00	19.90	40	42	37
Lemons .....	box	1.37	37.20	39.60	39.60	38	37	30
Oranges .....	box	0.698	18.80	20.20	20.20	39	42	32
Tangerines .....	box	1.49	39.10	43.10	43.00	51	41	53
<b>Livestock and poultry</b>								
Beef cattle .....	cwt	10.10	276.00	292.00	292.00	43	42	43
Calves .....	cwt	13.90	386.00	402.00	401.00	41	40	40
Hogs .....	cwt	5.53	151.00	160.00	160.00	42	38	39
Eggs <sup>1</sup> .....	dozen	0.091	2.49	2.63	2.63	40	40	35
Turkeys, live .....	pound	0.057	1.530	1.650	1.650	47	46	41

<sup>1</sup> Seasonally adjusted price as percentage of parity price.

<sup>2</sup> Wholesale extracted. Adjusted base price derived from state annual averages prices weighted by production. For 1982 through 1985 the national averages are the support prices.

<sup>3</sup> Equivalent packinghouse-door returns for California, New York, Oregon, and Washington. Price at point of first sale for other states.

## Commodity Parity Prices – United States: December 2012 with Comparisons

[Parity prices are computed under the provisions of Title III, Subtitle a, Section 301 (a) of the Agricultural Adjustment Act of 1938 as amended by the Agricultural Acts of 1948, 1949, and 1956. See January *Agricultural Prices* for details on adjusted base price and parity price computations]

Commodity and unit	Adjusted base price	Parity price			
		December 2011	November 2012	December 2012	
	(dollars)	(dollars)	(dollars)	(dollars)	
<b>Field crops and miscellaneous</b>					
Hops .....	pound	0.306	8.40	8.85	8.84
Mustard seed .....	cwt	2.82	72.80	81.60	81.40
Rapeseed .....	cwt	2.23	58.60	64.50	64.40
Rye .....	bushel	0.525	13.50	15.20	15.20
Safflower .....	cwt	2.02	53.10	58.40	58.30
Spearmint oil .....	pound	1.50	39.40	43.40	43.30
Sweet potatoes .....	cwt	2.21	62.10	63.90	63.80
<b>Tobacco</b>					
Flue-cured, 11-14 .....	pound	0.196	5.69	5.67	5.66
Fire-cured, 21-23 .....	pound	0.283	8.02	8.19	8.17
Burley, 31 .....	pound	0.202	5.86	5.84	5.83
Maryland, 32 .....	pound	0.174	5.01	5.03	5.03
Dark air-cured, 35-37 .....	pound	0.256	7.14	7.41	7.39
Pennsylvania seedleaf, 41 .....	pound	0.184	5.23	5.32	5.31
Cigar binder, 51 .....	pound	0.642	18.50	18.60	18.50
<b>Noncitrus fruit</b>					
Apples, processing <sup>1</sup> .....	ton	16.50	440.00	477.00	477.00
Apricots					
Fresh <sup>2</sup> .....	ton	123.00	3,120.00	3,560.00	3,550.00
Dried (California) .....	ton	259.00	7,170.00	7,490.00	7,480.00
Avocados <sup>2</sup> .....	ton	204.00	5,420.00	5,900.00	5,890.00
Cherries					
Sweet .....	ton	215.00	5,750.00	6,220.00	6,210.00
Tart .....	pound	0.034	0.930	0.984	0.982
Cranberry <sup>3</sup> .....	barrel	4.84	134.00	140.00	140.00
Dates (California) <sup>2</sup> .....	ton	177.00	5,010.00	5,120.00	5,110.00
<b>Grapes</b>					
Raisin variety .....	ton	125.00	3,200.00	3,620.00	3,610.00
Other dried .....	ton	56.10	1,790.00	1,620.00	1,620.00
Kiwifruit .....	ton	94.10	2,580.00	2,720.00	2,720.00
Nectarines, fresh (California) <sup>2</sup> .....	ton	54.10	1,510.00	1,570.00	1,560.00
Olives, canning (California) <sup>3</sup> .....	ton	89.50	2,390.00	2,590.00	2,580.00

See footnote(s) at end of table.

--continued

## Commodity Parity Prices – United States: December 2012 with Comparisons (continued)

[Parity prices are computed under the provisions of Title III, Subtitle a, Section 301 (a) of the Agricultural Adjustment Act of 1938 as amended by the Agricultural Acts of 1948, 1949, and 1956. See January *Agricultural Prices* for details on adjusted base price and parity price computations]

Commodity and unit	Adjusted base price	Parity price			
		December 2011	November 2012	December 2012	
	(dollars)	(dollars)	(dollars)	(dollars)	
<b>Noncitrus fruit - continued</b>					
Papayas (Hawaii) <sup>9</sup> .....	pound	0.044	1.26	1.27	1.27
<b>Peaches</b>					
Fresh <sup>4 9</sup> .....	ton	81.90	2,270.00	2,370.00	2,370.00
Dried (California) <sup>9</sup> .....	ton	53.70	1,570.00	1,550.00	1,550.00
<b>Processing, excludes dried</b>					
Clingstone (California) <sup>3 9</sup> .....	ton	33.30	922.00	963.00	962.00
<b>Pears</b>					
Fresh <sup>4 9</sup> .....	ton	55.50	1,520.00	1,610.00	1,600.00
Dried (California) <sup>1 9</sup> .....	ton	171.00	4,870.00	4,950.00	4,940.00
<b>Plums (California)</b>					
Fresh, equivalent on-tree <sup>9</sup> .....	ton	58.70	1,650.00	1,700.00	1,700.00
Prunes, dried (California) <sup>1 9</sup> .....	ton	148.00	4,020.00	4,280.00	4,270.00
<b>Prunes and plums</b>					
Fresh, excludes California <sup>5 9</sup> .....	ton	62.40	1,750.00	1,810.00	1,800.00
Processing, excludes dried <sup>1 9</sup> .....	ton	25.20	703.00	729.00	728.00
<b>Tree nuts<sup>6 9</sup></b>					
Almonds .....	pound	0.213	5.72	6.16	6.15
Hazelnuts .....	ton	196.00	5,010.00	5,670.00	5,660.00
Pistachios .....	pound	0.196	5.31	5.67	5.66
Walnuts .....	ton	179.00	4,840.00	5,180.00	5,170.00
<b>Vegetables, fresh<sup>7</sup></b>					
Carrots <sup>8</sup> .....	cwt	2.69	71.40	77.80	77.70
Cauliflower <sup>8</sup> .....	cwt	4.31	117.00	125.00	124.00
Celery <sup>8</sup> .....	cwt	2.01	56.10	58.10	58.00
Honeydew melons .....	cwt	2.09	59.40	60.50	60.40
Lettuce .....	cwt	2.29	64.30	66.20	66.10
Onions <sup>8</sup> .....	cwt	1.49	43.00	43.10	43.00
Tomatoes .....	cwt	4.68	130.00	135.00	135.00

<sup>1</sup> Equivalent returns at processing plant door.

<sup>2</sup> Equivalent returns at packinghouse door.

<sup>3</sup> Equivalent returns for bulk fruit at first delivery point.

<sup>4</sup> Equivalent packinghouse-door returns for California, New York (apples only), Oregon (except peaches), and Washington. Price at point of first sale for other states.

<sup>5</sup> Based on "as sold" prices for fresh fruit in all states.

<sup>6</sup> Prices In-Shell basis except almonds which are shelled basis.

<sup>7</sup> FOB shipping point prices.

<sup>8</sup> Includes some processing.



## Reliability of Prices Received Estimates

**Definition:** Prices received represent sales from producers to first buyers. They include all grades and qualities. The average commodity price from the survey multiplied by the total quantity marketed theoretically should give the total cash receipts for the commodity.

**Survey procedures:** Primary sales data used to determine grain prices were obtained from probability samples of about 1900 mills and elevators. These procedures ensure that virtually all grain moving into commercial channels has a chance of being included in the survey. Generally, States surveyed account for 90 percent or more of total United States production. Livestock prices are obtained from packers, stockyards, auctions, dealers, and market check data from AMS-USDA, private marketing organizations, and state commodity groups and agencies. Inter-farm sales of grain and livestock are not included since they represent very small percentages of the total marketings. Grain marketed for seed is also excluded. Fruit and vegetable prices are obtained from sample surveys and market check data from AMS-USDA, private marketing organizations, state agencies, and universities.

**Summary and estimation procedures:** Survey quantities sold are expanded by strata to state levels and used to weight average strata prices to a state average. State prices are then weighted to a United States price based on expanded marketings. Recommendations are prepared by the State Field Offices and reviewed by the Agricultural Statistics Board in Washington, D.C. State recommendations are reviewed for reasonableness with survey data, other States, and recent historic estimates.

**Revisions:** For most items, the current month's preliminary price represents a 3-5 day period around the 15th of the month. Previous month's prices represent actual dollars received for quantities sold during the entire month. Revisions are published in monthly issues of *Agricultural Prices*.

**Reliability:** United States price estimates based on probability surveys generally have a sampling error of less than one percent for the major commodities such as corn, wheat, soybeans, cotton, and rice. Current methods of summarization for non-probability commodities are not designed directly to calculate sampling errors. However, analytical measures approximate the United States relative sampling errors at around five percent. Any nonsampling errors are attributed to such things as the inability to obtain correct information, differences in interpreting questions or definitions, mistakes in coding or processing the data, etc. Efforts are made at each step in the survey process to minimize these nonsampling errors.

## Prices Paid by Farmers

The December Index of Prices Paid for Commodities and Services, Interest, Taxes, and Farm Wage Rates (PPITW) at 217 (1990-1992=100) is down 0.5 percent from November 2012 but up 5.3 percent from December 2011.

**Production index:** The December index, at 231, decreased 0.4 percent from last month but increased 6.0 percent from last year. Lower prices in December for concentrates, complete feeds, LP gas, and gasoline more than offset higher prices for feeder pigs, feeder cattle, nitrogen, and potash & phosphate.

**Feed:** The December index, at 276, decreased 1.8 percent from November but increased 23 percent from last December. Since November, lower prices for concentrates, complete feeds, supplements, and feed grains offset higher prices for hay & forages.

**Livestock and poultry:** The December index, at 170, increased 2.4 percent from last month and increased 1.2 percent from last year. Since November, prices for feeder pigs and feeder cattle are higher. The December feeder cattle price, at \$148.50 per cwt, is up \$1.00 per cwt from the November price. December feeder pigs averaged \$158.00 per cwt, up \$31.00 per cwt from November.

**Fertilizer:** The December index, at 332, is up 0.3 percent from November but 4.0 percent below December a year ago. Since November, higher prices for nitrogen and potash & phosphate more than offset lower prices for mixed fertilizer.

**Chemicals:** The December index, at 157, increased 1.3 percent from November and increased 6.1 percent from last December. Compared with last month, prices for herbicides, insecticides, and fungicides/other are higher.

**Fuels:** The December index, at 345, is down 2.3 percent from a month earlier and 3.9 percent below December 2011. Compared with last month, prices for LP gas, gasoline, and diesel are lower.

**Machinery:** The December index, at 259, was unchanged from November but is 3.2 percent above last December. Compared with last month, prices are higher for tractors and self-propelled machinery but lower for other machinery.

**Consumer price index:** The November 2012 Consumer Price Index, as issued by the Bureau of Labor Statistics, for all urban consumers (CPI-U) decreased 0.5 percent before seasonal adjustment to a level of 230.221 (1982-1984=100). The October index is 231.317. For the 12 month period ending in November, the overall index increased 1.8 percent.

## Prices Paid Indexes and Related Parity Ratios – United States: December 2012 with Comparisons

[Revised historical price indexes for months not shown are available at [www.nass.usda.gov](http://www.nass.usda.gov)]

Indexes and ratios	1910-1914 Base			1990-1992 Base		
	December 2011	November 2012	December 2012	December 2011	November 2012	December 2012
	(percent)	(percent)	(percent)	(percent)	(percent)	(percent)
Prices paid by farmers for commodities, services, interest, taxes, and wage rates (PPITW) .....	2738	2897	2888	206	218	217
Production .....	2117	2250	2242	218	232	231
Feed .....	1096	1373	1345	225	281	276
Livestock and poultry .....	2152	2125	2171	168	166	170
Seeds .....	3327	3581	3581	336	362	362
Fertilizer .....	1270	1212	1217	346	331	332
Chemicals .....	918	959	971	148	155	157
Fuels .....	2769	2723	2661	359	353	345
Supplies and repairs .....	1198	1219	1219	169	172	172
Autos and trucks .....	3090	3142	3155	116	118	119
Machinery .....	6287	6492	6506	251	259	259
Building materials .....	2341	2398	2400	172	177	177
Services and rent .....	2120	2185	2184	(NA)	(NA)	(NA)
Services .....	(NA)	(NA)	(NA)	164	168	167
Rent .....	(NA)	(NA)	(NA)	205	212	212
Interest <sup>1</sup> .....	3381	3635	3635	135	145	145
Taxes <sup>2</sup> .....	5935	6225	6225	222	232	232
Wage rates .....	7205	7599	7599	193	203	203
Production, interest, taxes, and wage rates (PITW) .....	2856	3036	3027	213	226	225
Family living-CPI <sup>3</sup> .....	2143	2187	2176	167	171	170
Ratio (received/paid) .....	(NA)	(NA)	(NA)	87	94	93
Parity ratio <sup>4</sup> .....	42	45	44	(NA)	(NA)	(NA)
Parity ratio adjusted <sup>5</sup> .....	43	47	45	(NA)	(NA)	(NA)
PPITW adjusted for productivity <sup>6</sup> .....	1469	1519	1516	(NA)	(NA)	(NA)
Crop sector (PPITW) .....	(NA)	(NA)	(NA)	215	222	222
Livestock sector (PPITW) .....	(NA)	(NA)	(NA)	196	213	212
Farm sector (production) .....	(NA)	(NA)	(NA)	224	257	255
Non-farm sector (production) .....	(NA)	(NA)	(NA)	215	218	218

(NA) Not available.

<sup>1</sup> Interest per acre on farm real estate debt and interest rate on farm non-real estate debt.

<sup>2</sup> Farm real estate taxes payable per acre.

<sup>3</sup> Bureau of Labor Statistics, Consumer Price Index for all urban consumers (CPI-U), for the previous month converted by the USDA.

<sup>4</sup> Ratio of index of prices received to PPITW (1910-1914=100).

<sup>5</sup> Based on estimated cash receipts, from marketings and government payments, the preliminary adjustment factor is 1.044 for 2012 and the revised factor is 1.041 for 2011.

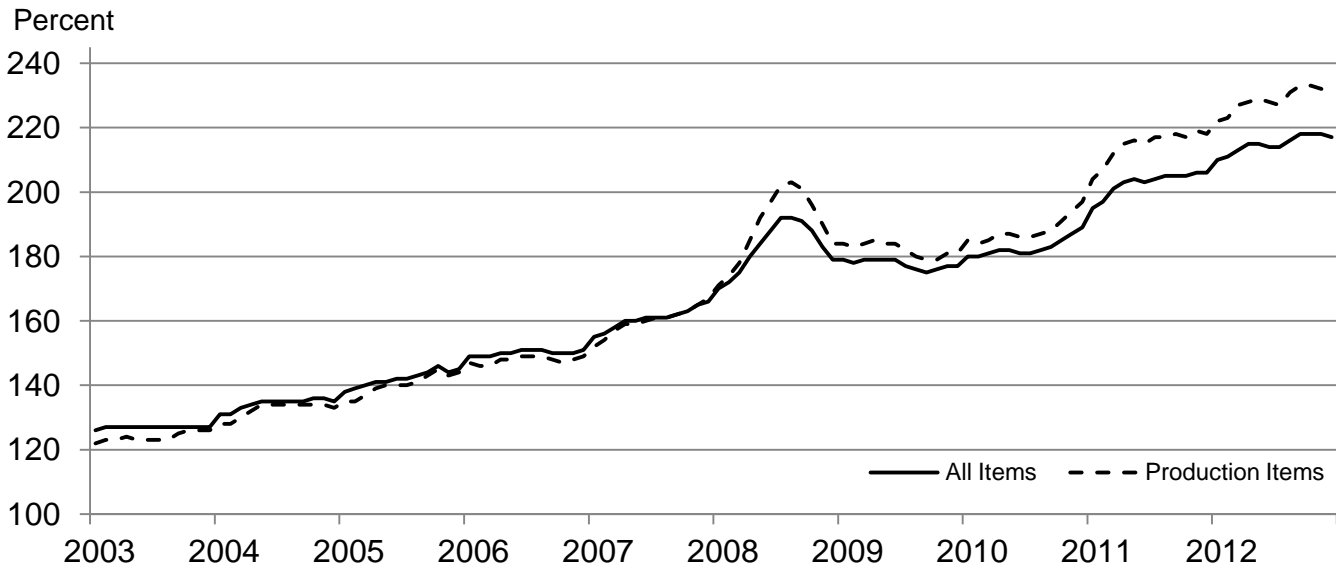
<sup>6</sup> PPITW is adjusted based on productivity trend for the prior 15 years.

## Prices Paid Indexes and Annual Weights for Input Components and Sub-components – United States: December 2012 with Comparisons

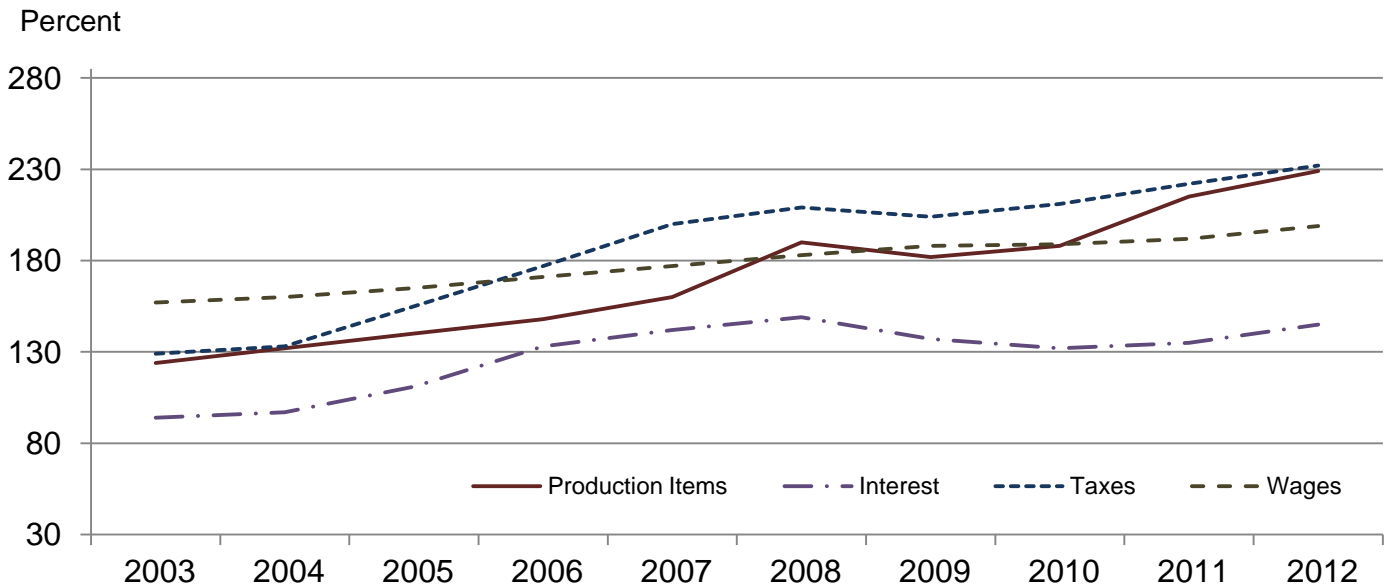
[Revised historical price indexes for months not shown are available at [www.nass.usda.gov](http://www.nass.usda.gov). Relative weights are a five year moving average]

	Relative weights		Indexes (1990-1992=100)		
	2011	2012	December 2011	November 2012	December 2012
	(percent)	(percent)	(percent)	(percent)	(percent)
Production items .....	70.6	71.1	218	232	231
Feed .....	12.2	12.7	225	281	276
Feed grains .....	1.7	1.8	253	302	301
Complete feeds .....	6.0	6.2	224	292	287
Hay and forages .....	1.5	1.6	225	248	248
Concentrates .....	1.9	2.0	184	254	237
Supplements .....	1.0	1.1	251	286	279
Livestock and poultry .....	8.5	8.3	168	166	170
Feeder cattle .....	6.6	6.5	173	174	175
Feeder pigs .....	0.7	0.7	172	138	172
Milk cow replacements .....	0.7	0.7	131	123	123
Poultry .....	0.5	0.5	158	158	158
Seeds .....	4.1	4.3	336	362	362
Field crops .....	3.7	3.9	356	381	381
Grasses and legumes .....	0.4	0.4	145	178	178
Fertilizer .....	5.5	5.7	346	331	332
Mixed fertilizer .....	2.4	2.5	319	296	295
Nitrogen .....	2.3	2.4	355	348	351
Potash and phosphate .....	0.8	0.8	407	385	392
Chemicals .....	3.3	3.2	148	155	157
Herbicides .....	2.1	2.0	133	139	141
Insecticides .....	0.7	0.7	172	175	178
Fungicides and other .....	0.5	0.5	178	193	195
Fuels .....	4.0	4.0	359	353	345
Diesel .....	2.5	2.5	397	410	409
Gasoline .....	0.8	0.8	284	300	290
LP gas .....	0.7	0.7	313	206	176
Supplies and repairs .....	4.6	4.6	169	172	172
Supplies .....	1.5	1.5	164	167	167
Repairs .....	3.0	3.0	171	174	174
Autos and trucks .....	1.4	1.2	116	118	119
Autos .....	0.2	0.2	115	116	117
Trucks .....	1.2	1.1	116	119	119
Machinery .....	4.3	4.3	251	259	259
Tractors .....	0.9	0.9	209	211	213
Self-propelled .....	1.7	1.7	266	276	276
Other machinery .....	1.6	1.6	259	268	268
Building materials .....	4.4	4.2	172	177	177
Services .....	12.1	12.0	164	168	167
Custom rates .....	1.2	1.2	148	157	157
Other services .....	10.9	10.7	165	169	169
Rent .....	6.3	6.6	205	212	212
Cash .....	3.4	3.5	262	270	270
Share .....	2.9	3.0	139	145	145
Interest .....	3.5	3.4	135	145	145
Taxes .....	3.1	3.1	222	232	232
Wage rates .....	7.4	7.2	193	203	203
Family living-CPI .....	15.4	15.3	167	171	170

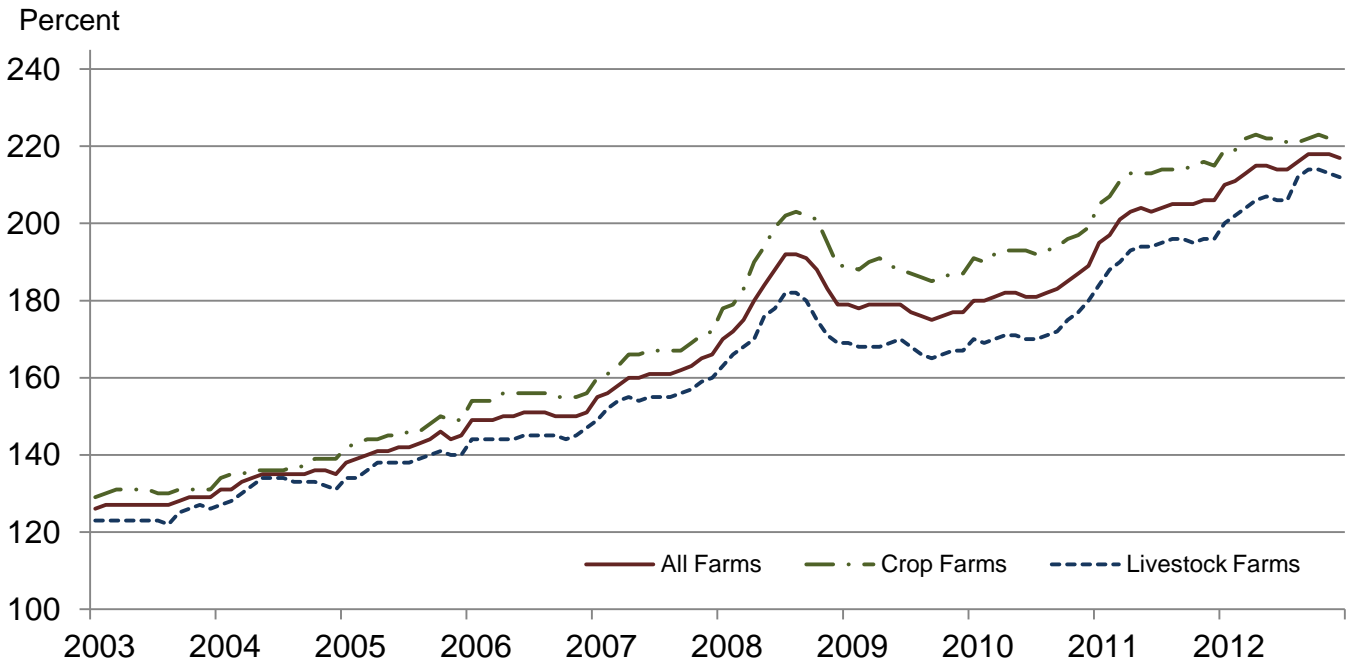
## Paid Indexes by Month, All Items and Production Items – United States: 1990-1992=100



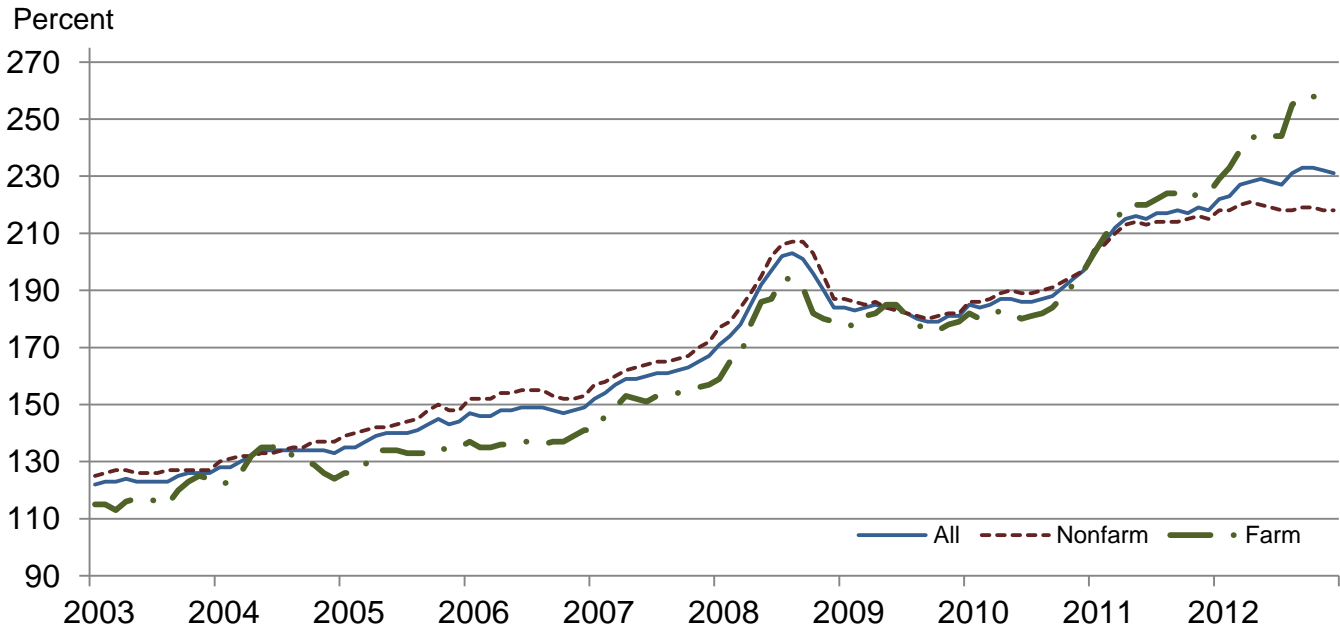
## Paid Indexes, Annual Averages, Production Items, Interest, Taxes, and Wages – United States: 1990-1992=100



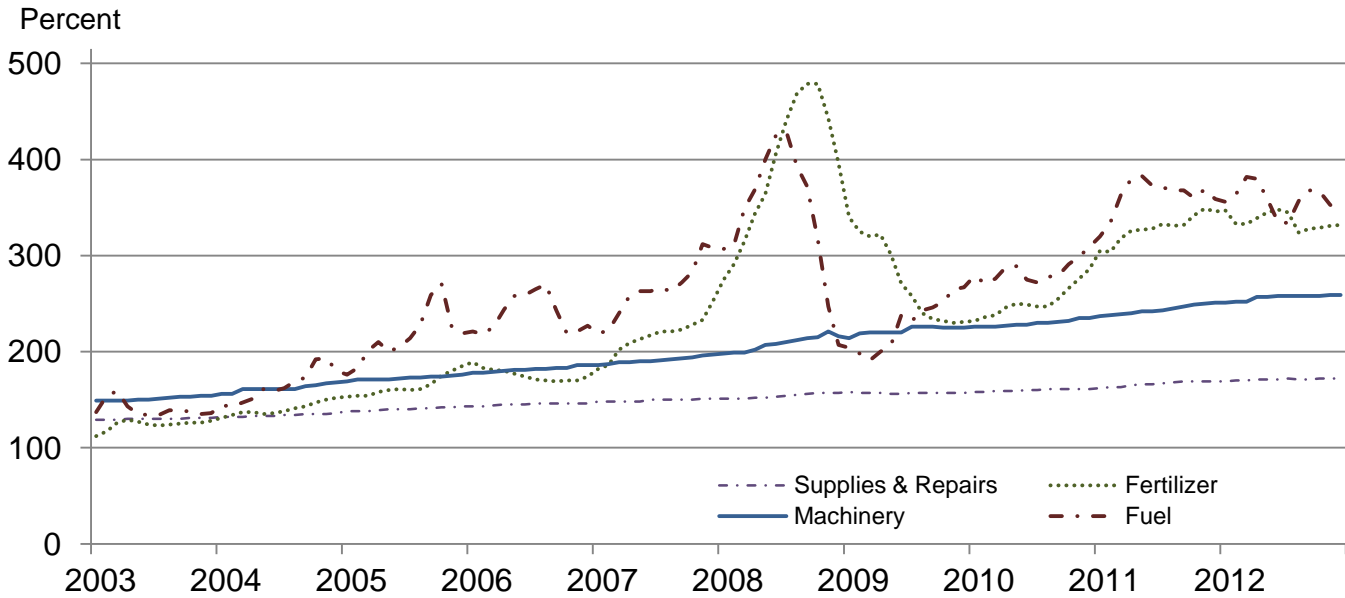
## Paid Indexes by Farm Type and Month, All Items – United States: 1990-1992=100



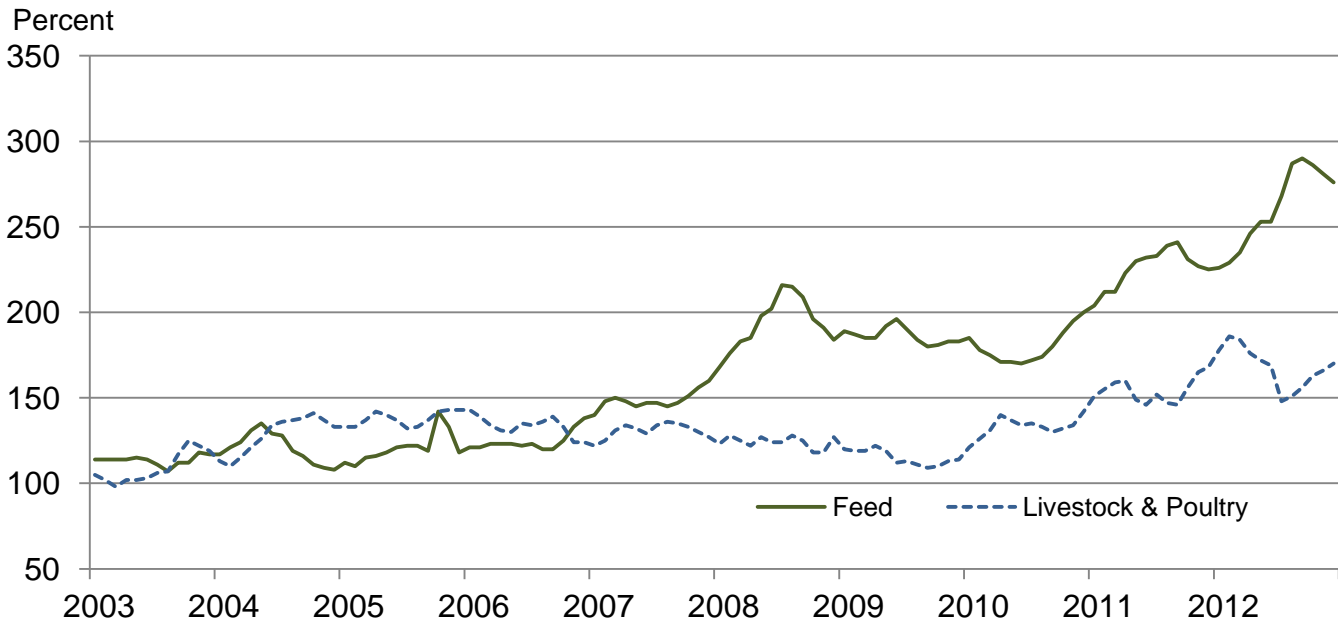
## Paid Indexes by Origin and Month, All Production Items – United States: 1990-1992=100



## Paid Indexes by Non-Farm Sector and Month, Supplies & Repairs, Fertilizer, Machinery, and Fuel – United States: 1990-1992=100



## Paid Indexes by Month, Feed and Livestock & Poultry – United States: 1990-1992=100



## Feed Price Ratios – United States: December 2012 with Comparisons

Feed price ratio <sup>1</sup>	December 2011	November 2012	Preliminary December 2012
Broiler-feed: pounds of broiler grower feed equal in value to 1 pound of broiler, live weight <sup>2</sup> .....	3.3	3.3	3.4
Market egg feed: pounds of laying feed equal in value to 1 dozen eggs <sup>3</sup> .....	8.7	6.6	6.2
Hog-corn: bushels of corn equal in value to 100 pounds of hog, live weight .....	10.8	8.7	9.0
Milk-feed: pounds of 16% mixed dairy feed equal in value to 1 pound of whole milk <sup>4</sup> .....	1.81	1.73	1.65
Steer and heifer-corn: bushels of corn equal in value to 100 pounds of steer & heifers, live weight .....	21.5	18.2	18.5
Turkey-feed: pounds of turkey grower equal in value to 1 pound of turkey, live weight <sup>5</sup> .....	5.4	4.7	4.1

<sup>1</sup> Effective January 1995, prices of commercial prepared feeds are based on current United States prices received for corn, soybeans, alfalfa hay, and all wheat.

<sup>2</sup> The price of commercial prepared broiler feed is based on current United States prices received for corn and soybeans. The modeled feed uses 58 percent corn and 42 percent soybeans.

<sup>3</sup> The price of commercial prepared layer feed is based on current United States prices received for corn and soybeans. The modeled feed uses 75 percent corn and 25 percent soybeans.

<sup>4</sup> The price of commercial prepared dairy feed is based on current United States prices received for corn, soybeans, and alfalfa hay. The modeled feed uses 51 percent corn, 41 percent alfalfa hay, and 8 percent soybeans.

<sup>5</sup> The price of commercial prepared turkey feed is based on current United States prices received for corn, soybeans, and wheat. The modeled feed uses 51 percent corn, 28 percent soybeans, and 21 percent wheat.

## Prices Received Used to Calculate Feed Price Ratios – United States: December 2012 with Comparisons

[Price data source for livestock and poultry commodities is United States Department of Agriculture's Agricultural Marketing Service]

Item	December 2011	November 2012	Preliminary December 2012
	(dollars)	(dollars)	(dollars)
Broilers, live .....pound	0.470	0.570	0.600
Eggs, market .....dozen	1.100	1.020	0.957
Hogs, all .....cwt	63.50	61.10	62.90
Milk, all .....cwt	19.70	22.00	21.10
Steers and heifers .....cwt	126.00	128.00	130.00
Turkeys, live .....pound	0.715	0.751	0.669
Corn .....bushel	5.86	7.02	7.01
Hay, alfalfa .....ton	195.00	215.00	217.00
Soybeans .....bushel	11.50	14.30	14.70
Wheat, all .....bushel	7.20	8.46	8.33

## Prices Paid for Feeder Livestock – United States: December 2012 with Comparisons

[Price data source is United States Department of Agriculture's Agricultural Marketing Service]

Item	December 2011	November 2012	Preliminary December 2012
	(dollars)	(dollars)	(dollars)
Feeder cattle and calves .....cwt	146.20	147.50	148.50
Feeder pigs .....cwt	158.00	127.00	158.00



## Prices Paid for Feed – United States: 2007-2012

[April survey for years 2005-2008. March survey began 2009]

Item	2007	2008	2009	2010	2011	2012
	(dollars)	(dollars)	(dollars)	(dollars)	(dollars)	(dollars)
Alfalfa meal .....cwt	18.20	21.10	23.90	23.80	24.00	26.60
Alfalfa pellets .....cwt	18.70	21.30	24.10	23.20	24.10	27.10
Bran .....cwt	17.40	19.10	23.20	22.70	24.70	26.40
Beef cattle concentrate, 32-36% protein ..... ton	370	433	488	413	498	525
Corn meal .....cwt	12.30	13.70	13.40	12.80	17.10	20.40
Cottonseed meal, 41% .....cwt	20.00	23.00	25.60	25.40	26.60	27.80
Dairy feed						
14% protein <sup>1</sup> ..... ton	239	301	285	264	333	437
16% protein <sup>1</sup> ..... ton	249	313	293	274	369	442
18% protein <sup>1</sup> ..... ton	267	324	297	284	365	431
20% protein <sup>1</sup> ..... ton	258	320	295	274	356	407
32-38% protein concentrate ..... ton	378	469	458	419	522	550
Hog feed						
14-18% protein <sup>1 2</sup> ..... ton	305	345	328	303	385	475
38-42% protein concentrate ..... ton	398	490	493	446	563	592
Molasses, liquid .....cwt	19.20	17.50	22.20	21.30	22.30	23.20
Poultry feed						
Broiler grower <sup>1</sup> ..... ton	306	387	464	456	502	591
Chick starter <sup>1</sup> ..... ton	327	416	501	485	541	597
Laying feed <sup>1</sup> ..... ton	278	371	391	374	450	527
Turkey grower <sup>1</sup> ..... ton	337	434	466	434	495	589
Soybean meal, 44% .....cwt	18.20	23.40	23.20	23.80	26.80	26.50
Soybean meal, over 44% .....cwt	16.90	22.40	22.00	21.20	24.80	24.10
Stock salt ..... 50 pound	5.02	5.45	5.93	5.92	6.18	6.33
Trace mineral blocks ..... 50 pound	6.15	6.60	7.09	8.02	8.16	7.59
	Index (1990-92=100)					
Feed Prices paid index <sup>3</sup> ..... percent	149	194	186	180	226	261

<sup>1</sup> Complete ration feed, fed without mixing or supplementation.

<sup>2</sup> Excluding pig starter.

<sup>3</sup> Annual average for all years.

## Annual Average Prices Paid for Feeder Livestock – United States: 2007-2012

Item	2007	2008	2009	2010	2011	2012
	(dollars)	(dollars)	(dollars)	(dollars)	(dollars)	(dollars)
Broiler chicks .....100	25.60	26.30	26.60	27.00	28.20	( <sup>1</sup> )
Egg-type chicks .....100	69.40	75.60	81.20	83.00	86.70	( <sup>1</sup> )
Feeders and stockers						
Cattle and calves ..... cwt	107.40	101.46	95.20	109.40	132.80	149.50
Feeder pigs ..... cwt	120.00	93.00	100.40	155.90	144.60	126.10
Turkey poults ..... each	1.32	1.44	1.32	1.43	1.47	( <sup>1</sup> )
	Index (1990-92=100)					
Livestock and poultry Prices paid index <sup>2</sup> ..... percent	131	124	115	133	155	168

<sup>1</sup> Annual average data are published in April 2013.

<sup>2</sup> Annual average.

The data presented in the following tables are calculated and published for use by the Forest Service, USDA and the Bureau of Land Management, U.S. Department of the Interior in computing Public Land Grazing Fees.

**2012 Prices Paid Index for Beef Cattle Production (1964-68=100): 980**

The Index of Prices Paid by Farmers and Ranchers for Beef Cattle Production input items is for the period of November 2011 through October 2012. The components of this index include the production indexes of Fuels, Supplies & Repairs, Autos & Trucks, Tractors & Self Propelled Machinery, Other Machinery, Building Materials, Interest, Wage Rates, and Farm Services & Rent. These components are weighted to the overall index value by their importance in the cost of producing beef cattle. The weights are prescribed by Federal Regulation Title 43, Subpart 4100.

**Prices Received for Beef Cattle – Selected United States Regions: 2012**

[Average for November 2011 through October 2012]

State	Beef cattle
	(dollars per cwt)
17 Western States <sup>1</sup> .....	124.45
16 Western States <sup>2</sup> .....	126.03
11 Western States <sup>3</sup> .....	122.48
9 Great Plains States <sup>4</sup> .....	125.21

<sup>1</sup> 17 Western States: Arizona, California, Colorado, Idaho, Kansas, Montana, Nebraska, Nevada, New Mexico, North Dakota, Oklahoma, Oregon, South Dakota, Texas, Utah, Washington, and Wyoming.

<sup>2</sup> 16 Western States: Arizona, California, Colorado, Idaho, Kansas, Montana, Nebraska, Nevada, New Mexico, North Dakota, Oklahoma, Oregon, South Dakota, Utah, Washington, and Wyoming.

<sup>3</sup> 11 Western States: Arizona, California, Colorado, Idaho, Montana, Nevada, New Mexico, Oregon, Utah, Washington, and Wyoming.

<sup>4</sup> 9 Great Plain States: Colorado, Kansas, Nebraska, New Mexico, North Dakota, Oklahoma, South Dakota, Texas, and Wyoming.

## Reliability of Prices Paid Estimates

**Definition:** Prices paid by farmers represent the average costs of inputs purchased by farmers and ranchers to produce agricultural commodities. Conceptually, the average price when multiplied by quantity purchased should equal total producer expenditures for the item.

**Survey procedures:** The prices paid data are obtained from establishments that sell goods and services to farmers and ranchers. Annually, about 8,500 firms are randomly selected from lists by type of item sold with an average response rate in the range of 75-80 percent. Firms are asked to report the price for the specified item "most commonly bought by farmers" or that was the "volume seller". Approximately 135 items are surveyed each March to represent all production input items purchased. The survey reference period for most items is the five business days centered around the 15th of the month. Separate prices paid surveys are conducted for agricultural chemicals, fuels, feed, fertilizer, machinery, and seed.

**Summary and estimation procedures:** The annual March Prices Paid Survey is summarized as a nonprobability survey. Average prices reported are aggregated to the region and United States level using weights available from expenditure data and other administrative sources. Price recommendations are prepared by the State Field Offices and Headquarters for review by the Agricultural Statistics Board in Washington, D.C. Also, the change in price level for individual items surveyed are combined to the regional and United States levels, and are published as prices paid indexes referenced to a specific base period. Prices paid indexes for new autos and trucks, building materials, farm supplies, motor supplies, and marketing containers are updated based on price changes measured in selected Bureau of Labor Statistics (BLS) indexes.

**Revisions:** Any revisions are published in the monthly and in annual issues of Agricultural Prices. The basis for revision must be supported by additional data that directly affect the level of the estimate. More revisions are likely for March when separate prices paid surveys are conducted, in lieu of BLS indexes, by the USDA to measure price change.

**Reliability:** Current methods of summarization for the March data are not designed directly to calculate sampling errors. However, analytical measures approximate the United States relative sampling errors for major items around 10 percent. Any nonsampling errors are attributed to such things as the inability to obtain correct information, differences in interpreting questions or definitions, mistakes in coding or processing the data, etc. Efforts are made at each step in the survey process to minimize these nonsampling errors.

**Program change:** Effective January 1, 1995, the National Agricultural Statistics Service updated the weights and changed the construction of its prices paid and received by farmers indexes. A Federal Register Notice dated October 28, 1994 discussed these program modifications.

A 1990-1992 reference and base period replaced the 1977 reference and 1971-1973 base weight period. Five-year moving average weights replaced the current fixed 1971-1973 base period weights. The 1910-1914=100 price indexes, required by statute for computing parity prices, were linked forward based on the changes in the new 1990-1992=100 indexes. The new indexes were constructed by multiplying the ratios of the current prices to the base period prices by the moving average weights (adjusted for seasonal marketing patterns for the prices received indexes).

## Calendar of Prices Received Features in the 2012 Agricultural Price Reports

Annual or Marketing Year Average Prices	Month Published
Austrian Winter Peas, United States .....	September
Barley, United States.....	June
by State and United States .....	August
Broilers, by State and United States.....	April
Canola, by State and United States .....	November
Cattle, by State and United States .....	February
Chickens, Other by State and United States.....	April
Chickpeas, by State and United States .....	November
Corn, United States .....	September
by State and United States .....	November
Cotton, by Type, State and United States.....	October
Cottonseed, by State and United States.....	October
Dry Beans, by State and United States.....	November
Dry Edible Peas, United States .....	September
Eggs, by State and United States.....	April
Flaxseed, by State and United States.....	November
Goats, by State and United States .....	February
Hay, by State and United States .....	August
Other Hay, 3-year Average by Region .....	February
Hogs, by State and United States .....	February
Hops, by State and United States .....	December
Lentils, United States .....	September
Milk, Sold to Plants, for All Milk, Price and Fat Test, by State and United States .....	April
Mohair, by State and United States .....	February
Mustard Seed, United States .....	November
Oats, United States .....	June
by State and United States .....	August
Peanuts, by State and United States .....	August
Potatoes, by State and United States, Preliminary .....	February
Proso Millet, by State and United States .....	November
Rapeseed, United States .....	November
Rice, United States (year-to-date) .....	August
by State and United States, by Length of Grain .....	January
Safflower, United States .....	November
Sheep and Lambs, by State and United States .....	February
Sorghum, by State and United States .....	September
Soybeans, by State and United States .....	September
Sweetpotatoes, by State and United States, Preliminary .....	January
Final and Revised .....	June
Sugarbeets, United States .....	July
Sugarcane, United States.....	July
Sunflower, by State and United States .....	November
Turkeys, by State and United States.....	April
Wheat, by Class, United States .....	June
by State and United States .....	August
Wool, by State and United States.....	February

**Calendar of Prices Received Features in the 2012 Agricultural Price Reports (continued)**

<b>Monthly Prices Received – Revised</b>	<b>Month Published</b>
Austrian Winter Peas, United States .....	September
Barley, by State and United States .....	August
Broilers, United States .....	April
Cattle, by State and United States .....	February
Chickens, by State and United States .....	April
Chickpeas, by State and United States .....	November
Corn, by State and United States .....	November
Cotton, by Type, State and United States .....	October
Cottonseed, by State and United States .....	October
Dry Beans, by State and United States.....	November
Dry Edible Peas, United States .....	September
Eggs, by State and United States .....	April
Flaxseed, by State and United States .....	November
Hay, by State and United States .....	August
Hogs, by State and United States .....	February
Hops, by State and United States .....	December
Lentils, United States .....	September
Milk, Sold to Plants, by Grade, Price and Fat Test by State and United States .....	April
Milk Cows, by Quarter, by State and United States .....	February
Oats, by State and United States .....	August
Peanuts, by State and United States .....	August
Potatoes, by State and United States, Preliminary .....	February
Rice, United States (year-to-date) .....	August
by State and United States, by Length of Grain .....	January
Sheep and Lambs, by State and United States .....	February
Sorghum, by State and United States .....	September
Soybeans, by State and United States .....	September
Sunflower, by State and United States .....	November
Wheat, by State and United States .....	August

**Calendar of Prices Received Features in the 2012 Agricultural Price Reports (continued)**

<b>Monthly Marketing Percents</b>	<b>Month Published</b>
Austrian Winter Peas, United States .....	September
Barley, United States.....	June
by State and United States .....	August
Chickpeas, by State and United States .....	November
Corn, United States .....	September
by State and United States .....	November
Cotton, Upland, by State and United States .....	October
Dry Beans, by State and United States.....	November
Dry Edible Peas, United States .....	September
Flaxseed, by State and United States.....	November

Hay, by State and United States .....	August
Lentils, United States .....	September
Oats, United States .....	June
by State and United States .....	August
Peanuts, by State and United States .....	August
Rice, United States (year-to-date) .....	August
Final .....	January
Sorghum, by State and United States .....	September
Soybeans, by State and United States .....	September
Sunflower, by State and United States .....	November
Wheat, United States .....	June
by State and United States .....	August

**Prices Received Index Numbers - Revised**

Index of Prices Received by Farmers, United States, by Month and Year .....	January, April, July, October
---	-------------------------------

**Milk and Egg Prices Received, Adjusted for Seasonal Variation**

Seasonally Adjusted Prices, Revised, United States .....	April
Seasonal Adjustment Factors, United States, program change .....	July

**Parity Prices**

Method of Computing .....	January
Average Prices Used for Parity Computations.....	January
Manufacturing Milk: Method of Computing Parity Price Equivalent .....	January
Average Price Received, United States.....	January

## Calendar of Prices Paid Features in the 2012 Agricultural Price Reports

### Indexes (1910-1914=100)

### Month Published

PPITW, PITW, Production Items, Component Items, Interest, Taxes and Wage Rates, Family Living, Farm and Non-Farm Origin, Crop and Livestock Sectors, Adjusted for Productivity, Ratio, Parity Ratio and Adjusted Parity Ratio

Annual Average (2007-2011) ..... January, April, July, October  
 By Month (2007-2011) ..... January, April, July, October  
 United States Current Month, Previous Month, Previous Year ..... Monthly

### Indexes (1990-1992=100)

### Month Published

PPITW, PITW, Production Items, Component and Subcomponent Items, Interest, Taxes and Wage Rates, Family Living Farm and Non-Farm Origin, Crop and Livestock Sectors, Adjusted for Productivity, Ratio, Parity Ratio and Adjusted Parity Ratio

Annual Average (2007-2011) ..... January, April, July, October  
 By Month (2007-2011) ..... January, April, July, October  
 United States Current Month, Previous Month, Previous Year ..... Monthly  
 Feed and Feeder Livestock & Poultry Annual Average, United States (2006-2011) ..... December

### Prices Paid

### Month Published

Farm Machinery, United States ..... April  
 Feed, by Region and United States ..... April  
 Feed, United States (2006-2011) ..... December  
 Feeder Livestock, United States ..... Monthly  
 Poultry, Chicks and Poults, Annual Average ..... April  
 Fertilizer Materials, Mixed Fertilizer and Agricultural Limestone, by Region and United States ..... April  
 Field Seeds, Retail United States ..... April  
 Fuels, by Region and United States ..... April  
 Agricultural Chemicals, United States ..... April

### Feed-Price Ratios

### Month Published

United States by Months and Annual Average, (January 2008- May 2011) ..... May  
 United States Current Month, Previous Month, Previous Year ..... Monthly

### Prices Paid Program Overview

### Month Published

Prices Paid Survey Months, Month Published and Geographic Levels of Estimates ..... January  
 Prices Paid Regions, and States Included ..... April

### Private Grazing Fee Rates and Components of Federal Fees

### Month Published

Private Non-Irrigated Grazing Fee Rates, by State and Region  
 (Data for 2009-2011) ..... January  
 Prices Paid Index for Beef Cattle Production (1964-68=100) ..... December  
 Beef Cattle Prices Received, Selected Regions (November-October) ..... December  
 Other Hay Prices Received, Selected Eastern Regions ..... February

## Information Contacts

Direct general questions to Troy Joshua, Chief, Environmental, Economics and Demographics Branch at (202) 720-6146. Below are the commodity specialists to contact for additional information.

### Crop Prices Received

Lance Honig, Chief, Crops Branch .....	(202) 720-2127
Jacqueline Moore, Head, Field Crops Section .....	(202) 720-2127
Jacqueline Moore – Peanuts, Rice.....	(202) 720-2127
Brent Chittenden – Oats, Rye, Wheat .....	(202) 720-8068
Steve Maliszewski – Cotton, Cotton Ginnings, Sorghum.....	(202) 720-5944
Anthony Prillaman – Corn, Proso Millet, Flaxseed .....	(202) 720-9526
Julie Schmidt – Crop Weather, Barley, Hay .....	(202) 720-7621
Travis Thorson – Soybeans, Sunflower, Other Oilseeds.....	(202) 720-7369
Jorge Garcia-Pratts, Head, Fruits, Vegetables and Special Crops Section.....	(202) 720-2127
Debbie Flippin – Fresh and Processing Vegetables, Onions, Strawberries.....	(202) 720-2157
Fred Granja – Apples, Apricots, Cherries, Plums, Prunes, Tobacco .....	(202) 720-4288
Erika White – Floriculture, Maple Syrup, Nursery, Tree Nuts .....	(202) 720-4215
Chris Hawthorn – Citrus, Coffee, Sugar Crops, Grapes, Tropical Fruits.....	(202) 720-5412
Daphne Schauber – Berries, Cranberries, Potatoes, Sweet Potatoes .....	(202) 720-4285
Dan Norris – Austrian Winter Peas, Dry Edible Peas, Lentils, Mints, Mushrooms, Peaches, Pears, Wrinkled Seed Peas, Dry Beans .....	(202) 720-3250

### Livestock Prices Received

Dan Kerestes, Chief, Livestock Branch .....	(202) 720-3570
Scott Hollis, Head, Livestock Section.....	(202) 720-3570
Travis Averill – Cattle.....	(202) 720-3040
Mike Miller – Milk, Milk Cows .....	(202) 720-3278
Doug Bounds – Hogs .....	(202) 720-3106
Bruce Boess, Head, Poultry and Specialty Commodities Section.....	(202) 720-3570
Cody Brokmeyer – Turkeys.....	(202) 690-3237
LaKeya Jones – Honey .....	(202) 720-0585
Kim Linonis – Eggs.....	(202) 690-8632
Miste Salmon – Broilers.....	(202) 720-3244

### Indexes, Prices Paid, and Parity Prices

Troy Joshua, Chief, Environmental, Economics and Demographics Branch.....	(202) 720-6146
Tony Dorn, Head, Economics Section .....	(202) 690-3223
Daryl Brinkman – Prices Received Indexes, Parity Prices .....	(202) 720-8844
Scott Shimmin – Grazing Fees.....	(202) 690-3231
Vincent Davis – Prices Paid Indexes, Prices Paid for Feed, Fertilizer, Agricultural Chemicals, Seeds, Farm Supplies and Repairs, Farm Machinery, Fuels, Feeder Livestock, Poultry Chicks, Feed Price Ratios, Autos & Trucks.....	(202) 690-3229



## Access to NASS Reports

For your convenience, you may access NASS reports and products the following ways:

- All reports are available electronically, at no cost, on the NASS web site: <http://www.nass.usda.gov>
- Both national and state specific reports are available via a free e-mail subscription. To set-up this free subscription, visit <http://www.nass.usda.gov> and in the “Follow NASS” box under “Receive reports by Email,” click on “National” or “State” to select the reports you would like to receive.

For more information on NASS surveys and reports, call the NASS Agricultural Statistics Hotline at (800) 727-9540, 7:30 a.m. to 4:00 p.m. ET, or e-mail: [nass@nass.usda.gov](mailto:nass@nass.usda.gov).

The United States Department of Agriculture (USDA) prohibits discrimination in all its programs and activities on the basis of race, color, national origin, age, disability, and where applicable, sex, marital status, familial status, parental status, religion, sexual orientation, political beliefs, genetic information, reprisal, or because all or a part of an individual's income is derived from any public assistance program. (Not all prohibited bases apply to all programs.) Persons with disabilities who require alternative means for communication of program information (Braille, large print, audiotape, etc.) should contact USDA's TARGET Center at (202) 720-2600 (voice and TDD).

To file a complaint of discrimination, write to USDA, Assistant Secretary for Civil Rights, Office of the Assistant Secretary for Civil Rights, 1400 Independence Avenue, S.W., Stop 9410, Washington, DC 20250-9410, or call toll-free at (866) 632-9992 (English) or (800) 877-8339 (TDD) or (866) 377-8642 (English Federal-relay) or (800) 845-6136 (Spanish Federal-relay). USDA is an equal opportunity provider and employer.



# Managing Risk 21<sup>st</sup> CENTURY *in the*

February 21-22, 2013  
Crystal Gateway Marriott Hotel  
Arlington, Virginia

**[www.usda.gov/oce/forum](http://www.usda.gov/oce/forum)**



USDA is an equal opportunity provider and employer.