



Cattle on Feed

ISSN: 1948-9080

Released July 25, 2014, by the National Agricultural Statistics Service (NASS), Agricultural Statistics Board, United States Department of Agriculture (USDA).

United States Cattle on Feed Down 2 Percent

Cattle and calves on feed for slaughter market in the United States for feedlots with capacity of 1,000 or more head totaled 10.1 million head on July 1, 2014. The inventory was 2 percent below July 1, 2013. The inventory included 6.46 million steers and steer calves, down 1 percent from the previous year. This group accounted for 64 percent of the total inventory. Heifers and heifer calves accounted for 3.60 million head, down 5 percent from 2013.

Placements in feedlots during June totaled 1.46 million, 6 percent below 2013. Net placements were 1.38 million head. During June, placements of cattle and calves weighing less than 600 pounds were 400,000, 600-699 pounds were 245,000, 700-799 pounds were 320,000, and 800 pounds and greater were 490,000.

Marketings of fed cattle during June totaled 1.85 million, 2 percent below 2013. This is the lowest fed cattle marketings for the month of June since the series began in 1996.

Other disappearance totaled 75,000 during June, 19 percent above 2013.

United States All Cattle on Feed down 6 Percent from 2012

Cattle on feed July 1, 2014, from all feedlots in the United States, totaled 11.6 million, down 6 percent from the 12.30 million on July 1, 2012. Cattle on feed in feedlots with 1,000 or more head accounted for 87 percent of the total cattle on feed on July 1, 2014, up slightly from July 1, 2012.

Number of Cattle on Feed, Placements, Marketings, and Other Disappearance on 1,000+ Capacity Feedlots – United States: July 1, 2013 and 2014

Item	Number		Percent of previous year
	2013	2014	
	(1,000 head)	(1,000 head)	(percent)
On feed June 1	10,767	10,594	98
Placed on feed during June	1,551	1,455	94
Fed cattle marketed during June	1,880	1,847	98
Other disappearance during June	63	75	119
On feed July 1	10,375	10,127	98

Number of Cattle on Feed, Placements, Marketings, and Other Disappearance on 1,000+ Capacity Feedlots – United States: June 1, 2013 and 2014

Item	Number		Percent of previous year
	2013	2014	
	(1,000 head)	(1,000 head)	(percent)
On feed May 1	10,760	10,648	99
Placed on feed during May	2,055	1,912	93
Fed cattle marketed during May	1,948	1,865	96
Other disappearance during May	100	101	101
On feed June 1	10,767	10,594	98

Number on Feed by Class on 1,000+ Capacity Feedlots – United States: July 1, 2013 and 2014

Item	Number		Percent of previous year
	2013	2014	
	(1,000 Head)	(1,000 Head)	(percent)
Class on Feed July 1			
Steers and Steer Calves	6,537	6,464	99
Heifers and Heifer Calves	3,776	3,603	95
Cows and Bulls	62	60	97

Total Number on Feed – United States: July 1, 2012 and 2014

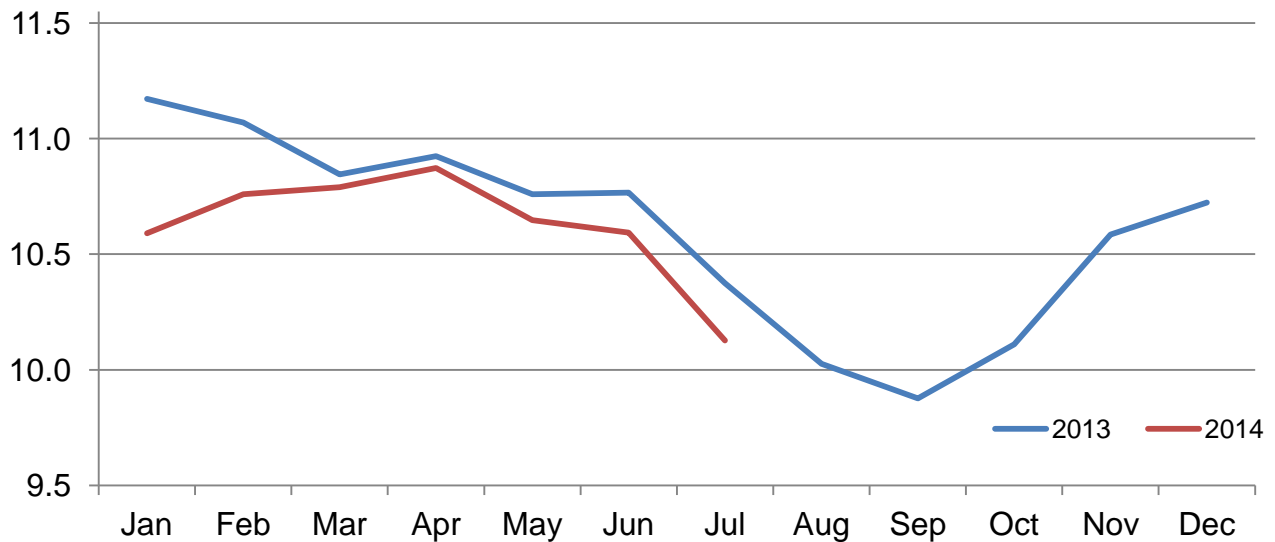
State	Number		Percent of 2012
	2012	2014	
	(1,000 Head)	(1,000 Head)	(percent)
United States	12,300	11,600	94

Number of Cattle on Feed on 1,000+ Capacity Feedlots by Month – States and United States: 2013 and 2014

State	July 1, 2013	June 1, 2014	July 1, 2014		
			Number	Percent of previous year	Percent of previous month
	(1,000 head)	(1,000 head)	(1,000 head)	(percent)	(percent)
Arizona	267	275	272	102	99
California	515	435	435	84	100
Colorado	920	930	870	95	94
Idaho	195	205	190	97	93
Iowa	580	640	620	107	97
Kansas	2,020	2,020	1,900	94	94
Minnesota	125	123	122	98	99
Nebraska	2,180	2,410	2,260	104	94
Oklahoma	305	265	255	84	96
South Dakota	200	225	210	105	93
Texas	2,560	2,550	2,490	97	98
Washington	203	201	193	95	96
Other States	305	315	310	102	98
United States	10,375	10,594	10,127	98	96

Cattle on Feed Inventory on 1,000+ Capacity Feedlots – United States

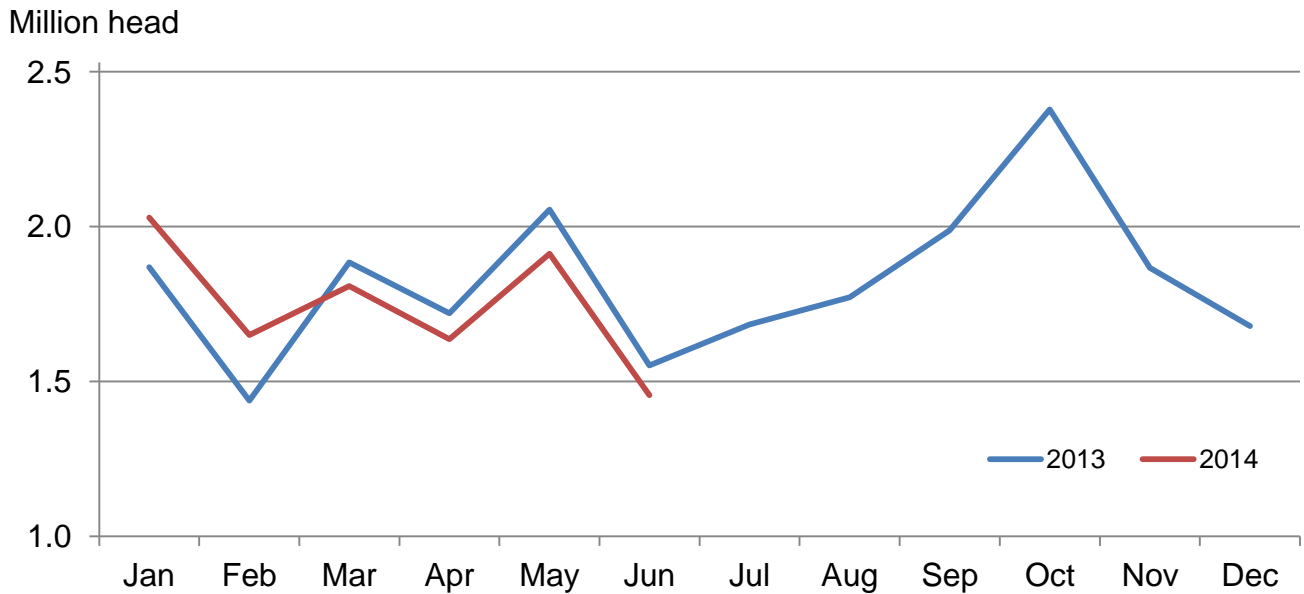
Million head



Number of Cattle Placed on Feed on 1,000+ Capacity Feedlots by Month – States and United States: 2013 and 2014

State	During June 2013	During May 2014	During June 2014		
			Number	Percent of previous year	Percent of previous month
	(1,000 head)	(1,000 head)	(1,000 head)	(percent)	(percent)
Arizona	22	24	20	91	83
California	61	50	45	74	90
Colorado	115	140	95	83	68
Idaho	36	23	26	72	113
Iowa	45	54	54	120	100
Kansas	350	435	315	90	72
Minnesota	10	8	15	150	188
Nebraska	330	425	375	114	88
Oklahoma	49	67	37	76	55
South Dakota	27	34	31	115	91
Texas	425	580	370	87	64
Washington	39	40	37	95	93
Other States	42	32	35	83	109
United States	1,551	1,912	1,455	94	76

Number of Cattle Placed on 1,000+ Capacity Feedlots – United States



Number of Cattle Placed on Feed by Weight Group on 1,000+ Capacity Feedlots by Month – States and United States: 2013 and 2014

State	During June									
	Under 600 lbs		600-699 lbs		700-799 lbs		800+ lbs		Total	
	2013	2014	2013	2014	2013	2014	2013	2014	2013	2014
	(1,000 head)	(1,000 head)	(1,000 head)	(1,000 head)	(1,000 head)	(1,000 head)	(1,000 head)	(1,000 head)	(1,000 head)	(1,000 head)
Colorado	30	30	15	15	30	20	40	30	115	95
Kansas	50	65	55	60	100	80	145	110	350	315
Nebraska	30	55	45	50	80	80	175	190	330	375
Texas	125	155	75	75	135	85	90	55	425	370
Other States	80	95	36	45	65	55	150	105	331	300
United States	315	400	226	245	410	320	600	490	1,551	1,455

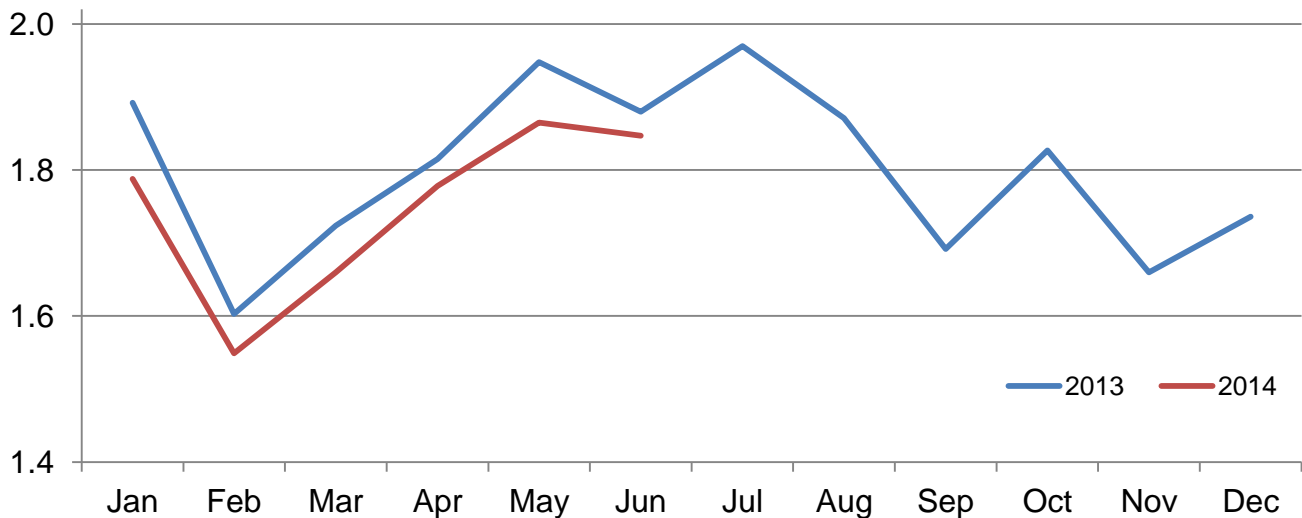
State	During May									
	Under 600 lbs		600-699 lbs		700-799 lbs		800+ lbs		Total	
	2013	2014	2013	2014	2013	2014	2013	2014	2013	2014
	(1,000 head)	(1,000 head)	(1,000 head)	(1,000 head)	(1,000 head)	(1,000 head)	(1,000 head)	(1,000 head)	(1,000 head)	(1,000 head)
Colorado	30	35	20	20	50	35	70	50	170	140
Kansas	55	80	70	75	130	120	175	160	430	435
Nebraska	55	55	60	55	130	95	225	220	470	425
Texas	160	180	105	100	155	160	150	140	570	580
Other States	95	85	55	40	90	67	175	140	415	332
United States	395	435	310	290	555	477	795	710	2,055	1,912

Number of Cattle Marketed on 1,000+ Capacity Feedlots by Month – States and United States: 2013 and 2014

State	During June 2013 (1,000 head)	During May 2014 (1,000 head)	During June 2014		
			Number	Percent of previous year	Percent of previous month
			(1,000 head)	(percent)	(percent)
Arizona	26	25	22	85	88
California	53	60	40	75	67
Colorado	145	145	150	103	103
Idaho	45	32	39	87	122
Iowa	73	70	70	96	100
Kansas	390	400	420	108	105
Minnesota	15	22	15	100	68
Nebraska	480	485	500	104	103
Oklahoma	53	55	46	87	84
South Dakota	41	41	45	110	110
Texas	480	450	420	88	93
Washington	48	45	44	92	98
Other States	31	35	36	116	103
United States	1,880	1,865	1,847	98	99

Number of Cattle Marketed on 1,000+ Capacity Feedlots – United States

Million head



Other Disappearance on 1,000+ Capacity Feedlots by Month – States and United States: 2013 and 2014

State	During June 2013 (1,000 head)	During May 2014 (1,000 head)	During June 2014		
			Number (1,000 head)	Percent of previous year (percent)	Percent of previous month (percent)
Arizona	1	1	1	100	100
California	3	5	5	167	100
Colorado	10	25	5	50	20
Idaho	1	1	2	200	200
Iowa	2	4	4	200	100
Kansas	10	25	15	150	60
Minnesota	1	1	1	100	100
Nebraska	10	20	25	250	125
Oklahoma	1	2	1	100	50
South Dakota	1	3	1	100	33
Texas	15	10	10	67	100
Washington	2	2	1	50	50
Other States	6	2	4	67	200
United States	63	101	75	119	74

**Number on Feed by Class on 1,000+ Capacity Feedlots by Quarter – States and United States:
2013 and 2014**

State	Steers and steer calves			Heifers and heifer calves			Cows and bulls		
	Jul 1, 2013	Apr 1, 2014	Jul 1, 2014	Jul 1, 2013	Apr 1, 2014	Jul 1, 2014	Jul 1, 2013	Apr 1, 2014	Jul 1, 2014
	(1,000 Head)	(1,000 Head)	(1,000 Head)	(1,000 Head)	(1,000 Head)	(1,000 Head)	(1,000 Head)	(1,000 Head)	(1,000 Head)
Arizona	262	272	268	5	5	4	0	0	0
California	445	435	390	68	40	42	2	0	3
Colorado	590	640	560	325	325	305	5	5	5
Idaho	102	124	101	92	84	88	1	2	1
Iowa	430	490	430	150	180	190	0	0	0
Kansas	1,080	1,120	970	930	960	925	10	10	5
Minnesota	111	103	95	13	32	26	1	1	1
Nebraska	1,355	1,680	1,470	810	775	765	15	45	25
Oklahoma	200	180	170	105	95	85	0	0	0
South Dakota	105	136	113	71	86	80	24	18	17
Texas	1,560	1,550	1,580	999	949	909	1	1	1
Washington	104	130	107	96	79	85	3	1	1
Other States	193	215	210	112	104	99	0	1	1
United States	6,537	7,075	6,464	3,776	3,714	3,603	62	84	60

Terms and Definitions of Cattle on Feed Estimates

Cattle on feed are animals being fed a ration of grain, silage, hay and/or protein supplement for slaughter market that are expected to produce a carcass that will grade select or better. It excludes cattle being "backgrounded only" for later sale as feeders or later placement in another feedlot.

Placements are cattle put into a feedlot, fed a ration which will produce a carcass that will grade select or better, and are intended for the slaughter market.

Marketings are cattle shipped out of feedlots to a slaughter market.

Other disappearance includes death loss, movement from feedlots to pasture, and shipments to other feedlots for further feeding.

Reliability of Cattle on Feed Estimates

Survey Procedures: During January and July all known feedlots in the United States with capacity of 1,000 or more head are surveyed to provide data for cattle on feed estimates. During the other months, all known feedlots from 16 States are surveyed. The 16 States account for approximately 98 percent of the cattle on feed in feedlots with capacity of 1,000 or more head. Individual State estimates are published monthly for 12 of the 16 States. Data collected from the remaining 4 States are used to establish the "Other States" estimates. These 4 States include Illinois, New Mexico, Oregon, and Wyoming. The "Other States" category represents all cattle on feed with a capacity of 1,000 or more head for the rest of the United States.

Estimating Procedures: These cattle on feed estimates were prepared by the Agricultural Statistics Board after reviewing recommendations and analysis submitted by each State office. Regional and State survey data were reviewed for reasonableness with each other and with estimates from the previous month when establishing the current estimates.

Revision Policy: Revisions to previous estimates are made to improve month to month relationships. Estimates for the previous month are subject to revision in all States each month when current estimates are made. In February, all monthly estimates for the previous year, and the number of feedlots and annual marketings from two years ago are reviewed and subject to revisions. The reviews are primarily based on slaughter data, state check-off or brand data, and any other data that may have been received after the original estimate was made. Estimates will also be reviewed after data from the Census of Agriculture are available. No revisions will be made after that date and estimates become final.

Reliability: Since all 1,000+ capacity cattle on feed operators in every State are not included in the monthly survey, survey estimates are subject to sampling variability. Survey results are also subject to non-sampling errors such as omissions, duplications, and mistakes in reporting, recording, and processing the data. The effects of these errors cannot be measured directly. They are minimized through rigid quality controls in the data collection process and through a careful review of all reported data for consistency and reasonableness.

To assist users in evaluating the reliability of estimates in this report, the "**Root Mean Square Error**" is shown for selected items in the table on the following page. The "Root Mean Square Error" is a statistical measure based on past performance and is computed using the differences between first and latest estimates. The "Root Mean Square Error" for cattle on feed inventory estimates over the past 24 months is 0.1 percent. This means that chances are 2 out of 3 that the final estimate will not be above or below the current estimate of 10.1 million head by more than 0.1 percent. Chances are 9 out of 10 that the difference will not exceed 0.2 percent.

The table on the following page shows a 24 month record of the range of differences between first and latest estimates for selected items. Using estimates of number on feed as an example, changes between the first estimate and the latest estimate during the past 24 months have averaged 9,000 head, ranging from 0 to 34,000 head. During this period the initial estimate has been above the latest estimate 8 times and has been below the latest estimate 7 times. This does not imply that the initial estimate is likely to understate or overstate final inventory.

Reliability of Monthly Cattle on Feed Estimates

[Based on data for the past 24 months]

Item	Root mean square error	90 percent confidence level	Difference between first and latest estimate				
			Average	Smallest	Largest	Months	
						Below latest	Above latest
	(percent)	(percent)	(1,000)	(1,000)	(1,000)	(number)	(number)
Number on feed	0.1	0.2	9	0	34	7	8
Placements	1.6	2.8	16	0	88	4	12
Marketings	1.3	2.3	14	0	67	0	12

Information Contacts

Listed below are the commodity specialists in the Livestock Branch of the National Agricultural Statistics Service to contact for additional information. E-mail inquiries may be sent to nass@nass.usda.gov

Dan Kerestes, Chief, Livestock Branch	(202) 720-3570
Scott Hollis, Head, Livestock Section	(202) 690-2424
Travis Averill – Cattle, Cattle on Feed	(202) 720-3040
Doug Bounds – Hogs and Pigs	(202) 720-3106
Donnie Fike – Dairy Products	(202) 690-3236
Tiffany Hora – Livestock Slaughter	(515) 284-4340
Mike Miller – Milk Production and Milk Cows	(202) 720-3278
Vacant – Sheep and Goats	(202) 720-3570

Access to NASS Reports

For your convenience, you may access NASS reports and products the following ways:

- All reports are available electronically, at no cost, on the NASS web site: <http://www.nass.usda.gov>
- Both national and state specific reports are available via a free e-mail subscription. To set-up this free subscription, visit <http://www.nass.usda.gov> and in the “Follow NASS” box under “Receive reports by Email,” click on “National” or “State” to select the reports you would like to receive.

For more information on NASS surveys and reports, call the NASS Agricultural Statistics Hotline at (800) 727-9540, 7:30 a.m. to 4:00 p.m. ET, or e-mail: nass@nass.usda.gov.

The U.S. Department of Agriculture (USDA) prohibits discrimination against its customers, employees, and applicants for employment on the bases of race, color, national origin, age, disability, sex, gender identity, religion, reprisal, and where applicable, political beliefs, marital status, familial or parental status, sexual orientation, or all or part of an individual's income is derived from any public assistance program, or protected genetic information in employment or in any program or activity conducted or funded by the Department. (Not all prohibited bases will apply to all programs and/or employment activities.)

If you wish to file a Civil Rights program complaint of discrimination, complete the [USDA Program Discrimination Complaint Form](#) (PDF), found online at http://www.ascr.usda.gov/complaint_filing_cust.html, or at any USDA office, or call (866) 632-9992 to request the form. You may also write a letter containing all of the information requested in the form. Send your completed complaint form or letter to us by mail at U.S. Department of Agriculture, Director, Office of Adjudication, 1400 Independence Avenue, S.W., Washington, D.C. 20250-9410, by fax (202) 690-7442 or email at program.intake@usda.gov.