



Cattle on Feed

ISSN: 1948-9080

Released December 20, 2013, by the National Agricultural Statistics Service (NASS), Agricultural Statistics Board, United States Department of Agriculture (USDA).

United States Cattle on Feed Down 5 Percent

Cattle and calves on feed for slaughter market in the United States for feedlots with capacity of 1,000 or more head totaled 10.7 million head on December 1, 2013. The inventory was 5 percent below December 1, 2012. This is the second lowest inventory for December 1 since the series began in 1996.

Placements in feedlots during November totaled 1.88 million, 3 percent below 2012. Net placements were 1.81 million head. During November, placements of cattle and calves weighing less than 600 pounds were 585,000, 600-699 pounds were 510,000, 700-799 pounds were 362,000, and 800 pounds and greater were 425,000.

Marketings of fed cattle during November totaled 1.68 million, 5 percent below 2012.

Other disappearance totaled 73,000 during November, 17 percent below 2012.

Number of Cattle on Feed, Placements, Marketings, and Other Disappearance on 1,000+ Capacity Feedlots – United States: December 1, 2012 and 2013

Item	Number		Percent of previous year
	2012	2013	
	(1,000 head)	(1,000 head)	(percent)
On feed November 1	11,254	10,597	94
Placed on feed during November	1,943	1,882	97
Fed cattle marketed during November	1,761	1,681	95
Other disappearance during November	88	73	83
On feed December 1	11,348	10,725	95

Number of Cattle on Feed, Placements, Marketings, and Other Disappearance on 1,000+ Capacity Feedlots – United States: November 1, 2012 and 2013

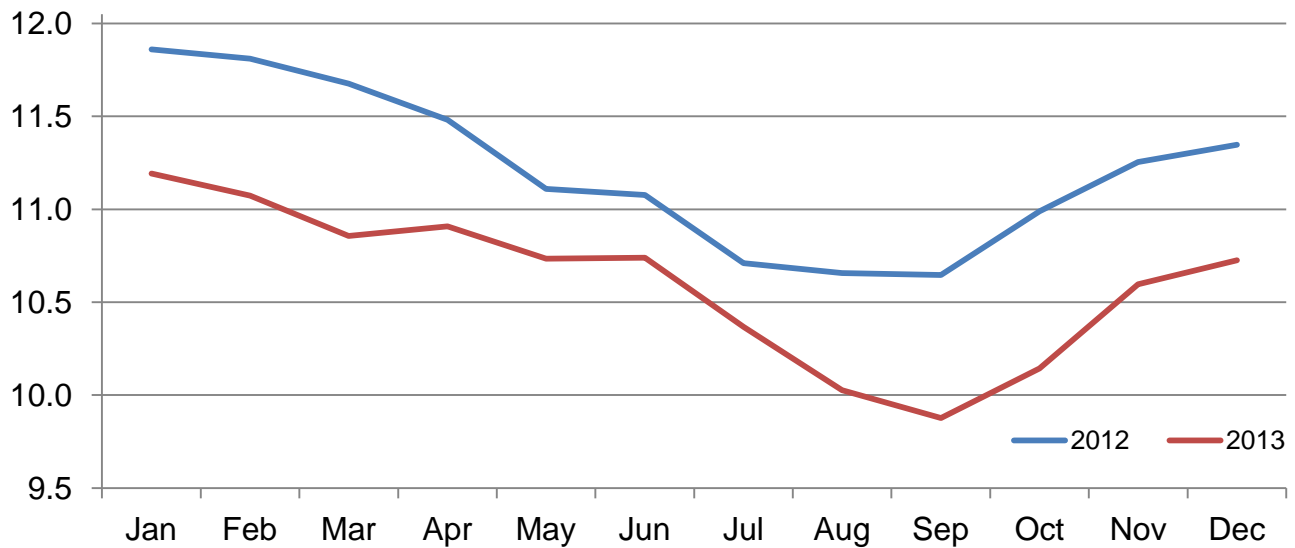
Item	Number		Percent of previous year
	2012	2013	
	(1,000 head)	(1,000 head)	(percent)
On feed October 1	10,989	10,144	92
Placed on feed during October	2,180	2,388	110
Fed cattle marketed during October	1,837	1,859	101
Other disappearance during October	78	76	97
On feed November 1	11,254	10,597	94

Number of Cattle on Feed on 1,000+ Capacity Feedlots by Month – States and United States: 2012 and 2013

State	December 1, 2012	November 1, 2013	December 1, 2013		
			Number	Percent of previous year	Percent of previous month
	(1,000 head)	(1,000 head)	(1,000 head)	(percent)	(percent)
Arizona	267	270	275	103	102
California	490	495	505	103	102
Colorado	1,020	950	970	95	102
Idaho	245	220	225	92	102
Iowa	610	590	610	100	103
Kansas	2,190	2,050	2,050	94	100
Nebraska	2,530	2,370	2,430	96	103
Oklahoma	345	270	265	77	98
South Dakota	230	200	220	96	110
Texas	2,700	2,530	2,510	93	99
Washington	261	203	207	79	102
Other States	460	449	458	100	102
United States	11,348	10,597	10,725	95	101

Cattle on Feed Inventory on 1,000+ Capacity Feedlots – United States

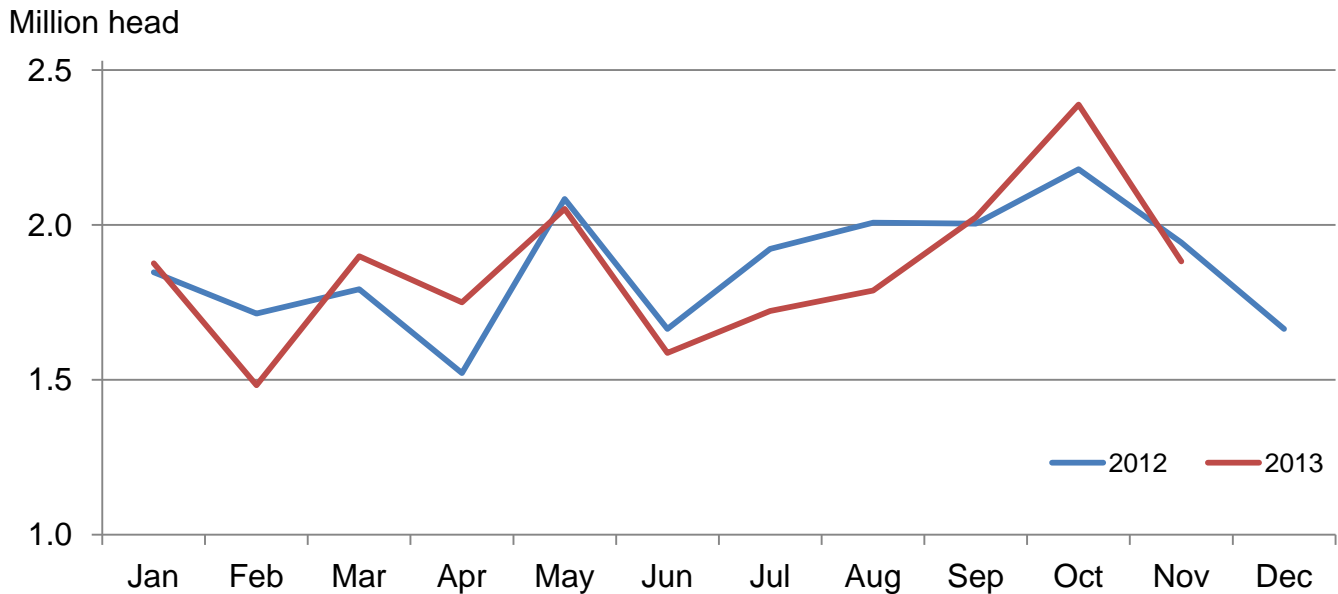
Million head



Number of Cattle Placed on Feed on 1,000+ Capacity Feedlots by Month – States and United States: 2012 and 2013

State	During November 2012 (1,000 head)	During October 2013 (1,000 head)	During November 2013		
			Number (1,000 head)	Percent of previous year (percent)	Percent of previous month (percent)
Arizona	28	28	30	107	107
California	65	55	64	98	116
Colorado	150	230	170	113	74
Idaho	40	56	42	105	75
Iowa	123	128	122	99	95
Kansas	375	470	370	99	79
Nebraska	465	630	475	102	75
Oklahoma	56	65	42	75	65
South Dakota	57	59	63	111	107
Texas	465	530	405	87	76
Washington	57	59	44	77	75
Other States	62	78	55	89	71
United States	1,943	2,388	1,882	97	79

Number of Cattle Placed on 1,000+ Capacity Feedlots – United States



Number of Cattle Placed on Feed by Weight Group on 1,000+ Capacity Feedlots by Month – States and United States: 2012 and 2013

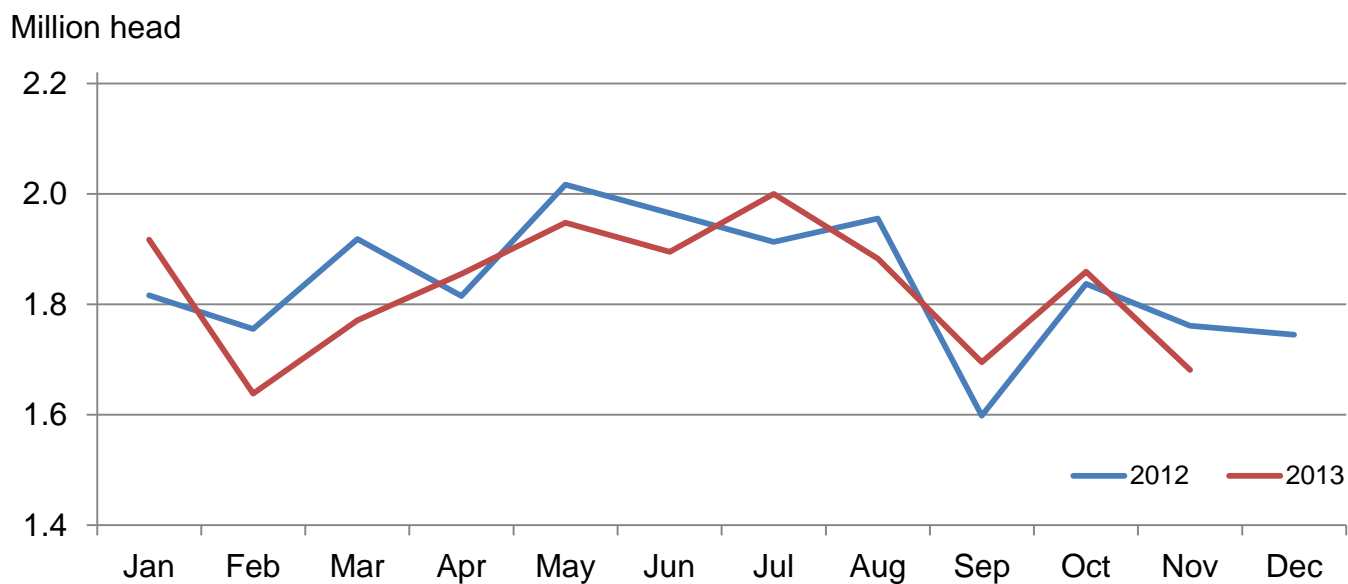
State	During November									
	Under 600 lbs		600-699 lbs		700-799 lbs		800+ lbs		Total	
	2012	2013	2012	2013	2012	2013	2012	2013	2012	2013
	(1,000 head)	(1,000 head)	(1,000 head)	(1,000 head)	(1,000 head)	(1,000 head)	(1,000 head)	(1,000 head)	(1,000 head)	(1,000 head)
Colorado	40	55	40	50	30	30	40	35	150	170
Kansas	80	80	90	90	115	110	90	90	375	370
Nebraska	120	120	120	135	80	80	145	140	465	475
Texas	230	165	105	115	80	75	50	50	465	405
Other States	185	165	95	120	80	67	128	110	488	462
United States	655	585	450	510	385	362	453	425	1,943	1,882

State	During October									
	Under 600 lbs		600-699 lbs		700-799 lbs		800+ lbs		Total	
	2012	2013	2012	2013	2012	2013	2012	2013	2012	2013
	(1,000 head)	(1,000 head)	(1,000 head)	(1,000 head)	(1,000 head)	(1,000 head)	(1,000 head)	(1,000 head)	(1,000 head)	(1,000 head)
Colorado	65	80	45	50	35	45	50	55	195	230
Kansas	80	90	95	120	120	140	85	120	380	470
Nebraska	190	170	130	170	80	90	190	200	590	630
Texas	165	190	125	125	100	150	60	65	450	530
Other States	180	190	110	118	100	85	175	135	565	528
United States	680	720	505	583	435	510	560	575	2,180	2,388

Number of Cattle Marketed on 1,000+ Capacity Feedlots by Month – States and United States: 2012 and 2013

State	During November 2012	During October 2013	During November 2013		
			Number	Percent of previous year	Percent of previous month
			(1,000 head)	(percent)	(percent)
Arizona	25	25	24	96	96
California	51	55	52	102	95
Colorado	155	145	145	94	100
Idaho	34	45	36	106	80
Iowa	100	96	100	100	104
Kansas	390	400	350	90	88
Nebraska	400	455	400	100	88
Oklahoma	54	78	45	83	58
South Dakota	45	38	41	91	108
Texas	415	440	405	98	92
Washington	43	39	39	91	100
Other States	49	43	44	90	102
United States	1,761	1,859	1,681	95	90

Number of Cattle Marketed on 1,000+ Capacity Feedlots – United States



Other Disappearance on 1,000+ Capacity Feedlots by Month – States and United States: 2012 and 2013

State	During November 2012 (1,000 head)	During October 2013 (1,000 head)	During November 2013		
			Number (1,000 head)	Percent of previous year (percent)	Percent of previous month (percent)
Arizona	1	1	1	100	100
California	4	5	2	50	40
Colorado	5	5	5	100	100
Idaho	1	1	1	100	100
Iowa	3	2	2	67	100
Kansas	15	20	20	133	100
Nebraska	15	15	15	100	100
Oklahoma	2	2	2	100	100
South Dakota	2	1	2	100	200
Texas	20	20	20	100	100
Washington	1	1	1	100	100
Other States	19	3	2	11	67
United States	88	76	73	83	96

Terms and Definitions of Cattle on Feed Estimates

Cattle on feed are animals being fed a ration of grain, silage, hay and/or protein supplement for slaughter market that are expected to produce a carcass that will grade select or better. It excludes cattle being "backgrounded only" for later sale as feeders or later placement in another feedlot.

Placements are cattle put into a feedlot, fed a ration which will produce a carcass that will grade select or better, and are intended for the slaughter market.

Marketings are cattle shipped out of feedlots to a slaughter market.

Other disappearance includes death loss, movement from feedlots to pasture, and shipments to other feedlots for further feeding.

Reliability of Cattle on Feed Estimates

Survey Procedures: During January and July all known feedlots in the United States with capacity of 1,000 or more head are surveyed to provide data for cattle on feed estimates. During the other months, all known feedlots from 16 States are surveyed. The 16 States account for approximately 98 percent of the cattle on feed in feedlots with capacity of 1,000 or more head. Individual State estimates are published monthly for 11 of the 16 States. Data collected from the remaining 5 States are used to establish the "Other States" estimates. These 5 States include Illinois, Minnesota, New Mexico, Oregon, and Wyoming. The "Other States" category represents all cattle on feed with a capacity of 1,000 or more head for the rest of the United States.

Estimating Procedures: These cattle on feed estimates were prepared by the Agricultural Statistics Board after reviewing recommendations and analysis submitted by each State office. Regional and State survey data were reviewed for reasonableness with each other and with estimates from the previous month when establishing the current estimates.

Revision Policy: Revisions to previous estimates are made to improve month to month relationships. Estimates for the previous month are subject to revision in all States each month when current estimates are made. In February, all monthly estimates for the previous year, and the number of feedlots and annual marketings from two years ago are reviewed and subject to revisions. The reviews are primarily based on slaughter data, state check-off or brand data, and any other data that may have been received after the original estimate was made. Estimates will also be reviewed after data from the Census of Agriculture are available. No revisions will be made after that date and estimates become final.

Reliability: Since all 1,000+ capacity cattle on feed operators in every State are not included in the monthly survey, survey estimates are subject to sampling variability. Survey results are also subject to non-sampling errors such as omissions, duplications, and mistakes in reporting, recording, and processing the data. The effects of these errors cannot be measured directly. They are minimized through rigid quality controls in the data collection process and through a careful review of all reported data for consistency and reasonableness.

To assist users in evaluating the reliability of estimates in this report, the "**Root Mean Square Error**" is shown for selected items in the table on the following page. The "Root Mean Square Error" is a statistical measure based on past performance and is computed using the differences between first and latest estimates. The "Root Mean Square Error" for cattle on feed inventory estimates over the past 24 months is 0.1 percent. This means that chances are 2 out of 3 that the final estimate will not be above or below the current estimate of 10.7 million head by more than 0.1 percent. Chances are 9 out of 10 that the difference will not exceed 0.1 percent.

The table on the following page shows a 24 month record of the range of differences between first and latest estimates for selected items. Using estimates of number on feed as an example, changes between the first estimate and the latest estimate during the past 24 months have averaged 3,000 head, ranging from 0 to 26,000 head. During this period the initial estimate has been above the latest estimate 3 times and has been below the latest estimate 3 times. This does not imply that the initial estimate is likely to understate or overstate final inventory.

Reliability of Monthly Cattle on Feed Estimates

[Based on data for the past 24 months]

Item	Root mean square error	90 percent confidence level	Difference between first and latest estimate				
			Average	Smallest	Largest	Months	
						Below latest	Above latest
	(percent)	(percent)	(1,000)	(1,000)	(1,000)	(number)	(number)
Number on feed	0.1	0.1	3	0	26	3	3
Placements	0.3	0.4	2	0	20	3	4
Marketings	0.2	0.4	1	0	20	3	2

Information Contacts

Listed below are the commodity specialists in the Livestock Branch of the National Agricultural Statistics Service to contact for additional information. E-mail inquiries may be sent to nass@nass.usda.gov

Dan Kerestes, Chief, Livestock Branch	(202) 720-3570
Scott Hollis, Head, Livestock Section	(202) 690-2424
Travis Averill – Cattle, Cattle on Feed	(202) 720-3040
Doug Bounds – Hogs and Pigs	(202) 720-3106
Alissa Cowell-Mytar – Sheep and Goats	(202) 720-4751
Donnie Fike – Dairy Products	(202) 690-3236
Tiffany Hora – Livestock Slaughter	(515) 284-4340
Mike Miller – Milk Production and Milk Cows	(202) 720-3278

Access to NASS Reports

For your convenience, you may access NASS reports and products the following ways:

- All reports are available electronically, at no cost, on the NASS web site: <http://www.nass.usda.gov>
- Both national and state specific reports are available via a free e-mail subscription. To set-up this free subscription, visit <http://www.nass.usda.gov> and in the “Follow NASS” box under “Receive reports by Email,” click on “National” or “State” to select the reports you would like to receive.

For more information on NASS surveys and reports, call the NASS Agricultural Statistics Hotline at (800) 727-9540, 7:30 a.m. to 4:00 p.m. ET, or e-mail: nass@nass.usda.gov.

The U.S. Department of Agriculture (USDA) prohibits discrimination against its customers, employees, and applicants for employment on the bases of race, color, national origin, age, disability, sex, gender identity, religion, reprisal, and where applicable, political beliefs, marital status, familial or parental status, sexual orientation, or all or part of an individual's income is derived from any public assistance program, or protected genetic information in employment or in any program or activity conducted or funded by the Department. (Not all prohibited bases will apply to all programs and/or employment activities.)

If you wish to file a Civil Rights program complaint of discrimination, complete the [USDA Program Discrimination Complaint Form](#) (PDF), found online at http://www.ascr.usda.gov/complaint_filing_cust.html, or at any USDA office, or call (866) 632-9992 to request the form. You may also write a letter containing all of the information requested in the form. Send your completed complaint form or letter to us by mail at U.S. Department of Agriculture, Director, Office of Adjudication, 1400 Independence Avenue, S.W., Washington, D.C. 20250-9410, by fax (202) 690-7442 or email at program.intake@usda.gov.