



## Animal Feed Statistics for Great Britain - September 2013

Statistics on GB Animal Feed include data for the period July, August and September with percentage changes for the corresponding periods last year (tables 1 to 4 and table 6).

Statistics for the quarterly average price series show data from the period January to March 2006 up to the period July to Sep 2013 (table 7).

### Key points:

- In September 2013 the total GB retail production of animal feed was up 4.1% compared with September 2012, with poultry feed being particularly strong.
- In September 2013 the total GB raw material usage in the retail production of animal feed was up 4.4% compared with September 2012, with a slightly higher cereal incorporation rate. There was proportionately more barley being used.
- In September 2013 the total GB integrated feed production was down -0.5% compared with September 2012
- For the period July to Sep 2013 quarterly average prices of animal feedingstuffs were as follows:-

|                        |                |
|------------------------|----------------|
| Cattle and calf feed - | £248 per Tonne |
| Pig feed -             | £274 per Tonne |
| Poultry feed -         | £297 per Tonne |
| Sheep feed -           | £258 per Tonne |

- For cattle/calf and poultry feed, this was the first fall in price since January 2012.

### Revisions this month:

Please note there is a level of estimation due to Defra receiving revised backdated data for the retail animal feed survey.

Please check future releases or datasets for up to date information.

These results are released monthly and will be next updated at 09:30 on 5th December 2013. Average prices of animal feedingstuffs will be updated quarterly, the next update will be at 09:30 on 6th February 2014

---

### Enquiries to:

Tom Johnson, Department for Environment, Food and Rural Affairs, Room 301, Foss House, Kings Pool, 1-2 Peasholme Green, York YO1 7PX, Tel: 01904 455301

Email: [Tom.Johnson@defra.gsi.gov.uk](mailto:Tom.Johnson@defra.gsi.gov.uk)

Email: [crops-statistics@defra.gsi.gov.uk](mailto:crops-statistics@defra.gsi.gov.uk)

**A National Statistics publication.** National Statistics are produced to high professional standards. They undergo regular quality assurance reviews to ensure that they meet customer needs. They are produced free from any political interference. For general enquiries about National Statistics, contact the National Statistics Public Enquiry Service: tel. 0845 601 3034 email [info@statistics.gov.uk](mailto:info@statistics.gov.uk). You can also find National Statistics on the internet at [www.statistics.gov.uk](http://www.statistics.gov.uk).



---

## Animal Feed Statistics for Great Britain - September 2013

| Contents:                                                    | Page  |
|--------------------------------------------------------------|-------|
| Retail Production of Animal Feedingstuffs in Great Britain   | 3-4   |
| Raw Materials Usage in Animal Feedingstuffs in Great Britain | 5-6   |
| Analysis of Retail Production by Company Type                | 7     |
| Poultry Feed Production                                      | 8     |
| Average Compound Feed Prices by Main Livestock categories    | 9     |
| Published Charts                                             | 10    |
| Methodology, Notes and Revisions Policy                      | 11-12 |

---

Results are typically available five weeks after the monthly collection period. They are published in a statistical release 12 times per year. Historic data from January 1997 data is available in a separate time series spreadsheet that is published at:

To access the historic datasets for the GB Retail Production of Animal Feedingstuffs (tables 1 to 4), the Integrated Feed Production (table 6a) and the quarterly average prices and historic monthly average prices of animal feedingstuffs please see the following link:

<https://www.gov.uk/government/publications/animal-feed-production>

The datasets are the last 3 documents in the list.

Table 1

**Retail Production of Animal Feedingstuffs  
in Great Britain**

**July to September 2013**

Thousand tonnes

|                                                                        | JULY         | AUGUST       | SEPTEMBER *  | Crop Year<br>JULY TO<br>SEPTEMBER | 12 Month<br>Moving Total |
|------------------------------------------------------------------------|--------------|--------------|--------------|-----------------------------------|--------------------------|
| <b>CATTLE AND CALF FEED</b>                                            | <b>295.2</b> | <b>313.5</b> | <b>349.7</b> | <b>958.5</b>                      | <b>4,284.3</b>           |
| All calf feed (3)                                                      | 12.1         | 13.3         | 15.9         | 41.3                              | 191.0                    |
| Compounds for dairy cows                                               | 156.4        | 166.4        | 180.9        | 503.7                             | 2,020.3                  |
| Blends for dairy cows                                                  | 51.6         | 56.7         | 63.5         | 171.7                             | 848.6                    |
| All other cattle feed                                                  | 46.0         | 47.5         | 53.4         | 146.8                             | 733.9                    |
| All other cattle blends                                                | 25.7         | 25.7         | 31.1         | 82.5                              | 423.6                    |
| Protein concentrates (1)                                               | 3.5          | 4.0          | 5.0          | 12.4                              | 66.9                     |
| <b>PIG FEED</b>                                                        | <b>132.8</b> | <b>133.6</b> | <b>151.1</b> | <b>417.5</b>                      | <b>1,697.5</b>           |
| Pig starters & creep feed                                              | 6.0          | 6.0          | 5.9          | 18.0                              | 71.2                     |
| Link/early grower feeds                                                | 6.0          | 6.0          | 5.7          | 17.7                              | 77.5                     |
| Pig growing feed                                                       | 33.1         | 34.3         | 35.8         | 103.2                             | 406.7                    |
| Pig finishing feed                                                     | 55.1         | 55.6         | 67.4         | 178.2                             | 725.1                    |
| Pig breeding feed                                                      | 31.7         | 30.9         | 34.8         | 97.3                              | 407.0                    |
| Protein Concentrates (1)                                               | 0.8          | 0.8          | 1.4          | 3.0                               | 10.1                     |
| <b>POULTRY FEED (2)</b>                                                | <b>284.0</b> | <b>274.8</b> | <b>318.3</b> | <b>877.0</b>                      | <b>3,315.6</b>           |
| Chick rearing feed                                                     | 12.3         | 11.7         | 11.6         | 35.5                              | 139.3                    |
| Layer feed                                                             | 77.7         | 76.1         | 90.4         | 244.2                             | 994.1                    |
| Broiler chicken feed                                                   | 113.8        | 114.4        | 142.8        | 371.0                             | 1,429.3                  |
| Poultry breeding & rearing feed                                        | 19.0         | 19.3         | 25.1         | 63.4                              | 266.7                    |
| Turkey feed                                                            | 11.5         | 14.8         | 24.2         | 50.5                              | 198.3                    |
| All other poultry feed                                                 | 49.7         | 38.4         | 24.1         | 112.1                             | 286.7                    |
| Protein concentrates (1)                                               | 0.1          | 0.1          | 0.1          | 0.3                               | 1.2                      |
| <b>SHEEP FEED</b>                                                      | <b>30.2</b>  | <b>30.0</b>  | <b>32.4</b>  | <b>92.6</b>                       | <b>930.3</b>             |
| Compounds for breeding sheep                                           | 5.0          | 5.1          | 5.3          | 15.5                              | 443.6                    |
| Blends for breeding sheep                                              | 1.0          | 1.4          | 1.5          | 3.8                               | 30.3                     |
| Compounds for growing and finishing sheep                              | 20.0         | 18.2         | 19.5         | 57.8                              | 388.2                    |
| Blends for growing and finishing sheep                                 | 3.8          | 4.8          | 5.3          | 13.9                              | 61.0                     |
| Protein concentrates (1)                                               | 0.4          | 0.5          | 0.8          | 1.6                               | 7.1                      |
| <b>HORSE FEED</b>                                                      | <b>11.5</b>  | <b>12.1</b>  | <b>17.0</b>  | <b>40.6</b>                       | <b>199.6</b>             |
| <b>OTHER COMPOUNDS, BLENDS<br/>AND CONCENTRATES (1)</b>                | <b>38.4</b>  | <b>43.2</b>  | <b>44.4</b>  | <b>126.0</b>                      | <b>388.0</b>             |
| <b>TOTAL COMPOUNDS, BLENDS<br/>AND CONCENTRATES (1)</b>                | <b>792.2</b> | <b>807.2</b> | <b>912.8</b> | <b>2,512.1</b>                    | <b>10,815.4</b>          |
| <b>OTHER PROCESSED FEEDINGSTUFFS<br/>FOR DELIVERY IN STRAIGHT FORM</b> | <b>25.3</b>  | <b>22.8</b>  | <b>11.7</b>  | <b>59.8</b>                       | <b>176.3</b>             |
| Flaked maize and other maize products                                  | 1.0          | 1.0          | 1.2          | 3.2                               | 15.3                     |
| Molassed feedingstuffs                                                 | 6.3          | 1.1          | 1.9          | 9.3                               | 31.3                     |
| All others                                                             | 18.0         | 20.7         | 8.5          | 47.2                              | 129.6                    |
| <b>TOTAL ALL FEEDINGSTUFFS</b>                                         | <b>817.5</b> | <b>830.0</b> | <b>924.4</b> | <b>2,571.9</b>                    | <b>10,991.7</b>          |

(1) 'Protein Concentrates' includes Balancers.

(2) All production by Integrated Poultry Units are excluded from this table. These data are contained in Table 6a.

(3) Calf feed includes calf milk substitutes.

\* March, June, September and December are 5 week periods. All other months are 4 week periods. There were 53 weeks in the Statistical year 2010. In order to incorporate the change January 2010 was increased to a 5 week period compared to 4 weeks in 2009. Figures rounded to the nearest final digit may not add to the totals as shown.

Enquiries: Table 1 - Tom Johnson on ++44(0)1904 455301 Email: tom.johnson@defra.gsi.gov.uk

Table 2

**Retail Production of Animal Feedingstuffs  
in Great Britain**

**Percentage change over Corresponding period in 2012**

|                                                                        | JULY   | AUGUST | SEPTEMBER * | Crop Year<br>JULY TO<br>SEPTEMBER | 12 Month<br>Moving Total |
|------------------------------------------------------------------------|--------|--------|-------------|-----------------------------------|--------------------------|
| <b>CATTLE AND CALF FEED</b>                                            | 1.1%   | 2.4%   | 0.3%        | 1.2%                              | 8.9%                     |
| Compounds for dairy cows                                               | 1.3%   | 4.6%   | 3.9%        | 3.3%                              | 2.8%                     |
| Blends for dairy cows                                                  | -7.9%  | -1.0%  | -9.1%       | -6.2%                             | 9.5%                     |
| All other cattle feed                                                  | 8.6%   | 1.9%   | -6.8%       | 0.4%                              | 19.0%                    |
| All other cattle blends                                                | 16.5%  | 4.0%   | 15.5%       | 11.9%                             | 26.1%                    |
| Protein concentrates (1)                                               | -17.1% | -10.1% | 0.6%        | -8.4%                             | 5.7%                     |
| <b>PIG FEED</b>                                                        | -1.9%  | -3.6%  | 0.3%        | -1.7%                             | 3.9%                     |
| Pig starters & creep feed                                              | 6.0%   | -1.8%  | -6.3%       | -0.9%                             | 17.3%                    |
| Link/early grower feeds                                                | -6.3%  | -7.3%  | -18.0%      | -10.7%                            | 6.8%                     |
| Pig growing feed                                                       | 2.8%   | 1.4%   | -1.3%       | 0.9%                              | 4.2%                     |
| Pig finishing feed                                                     | -0.7%  | -4.6%  | 3.3%        | -0.5%                             | 6.6%                     |
| Pig breeding feed                                                      | -9.6%  | -7.0%  | -0.9%       | -5.8%                             | -3.4%                    |
| Protein Concentrates (1)                                               | 57.8%  | 14.0%  | 86.8%       | 53.4%                             | 26.5%                    |
| <b>POULTRY FEED (2)</b>                                                | 2.0%   | 2.4%   | 7.7%        | 4.1%                              | 5.7%                     |
| Chick rearing feed                                                     | -9.7%  | -6.7%  | -9.9%       | -8.8%                             | -10.4%                   |
| Layer feed                                                             | -2.2%  | -5.4%  | 8.8%        | 0.5%                              | 1.6%                     |
| Broiler chicken feed                                                   | 8.9%   | 10.2%  | 10.5%       | 9.9%                              | 10.7%                    |
| Poultry breeding & rearing feed                                        | -7.9%  | -3.6%  | 2.5%        | -2.7%                             | 9.1%                     |
| Turkey feed                                                            | -5.6%  | -0.2%  | 9.5%        | 2.8%                              | 6.8%                     |
| All other poultry feed                                                 | 3.2%   | 5.0%   | 1.0%        | 3.3%                              | 2.5%                     |
| Protein concentrates (1)                                               | -18.0% | 25.8%  | 35.5%       | 14.5%                             | 6.3%                     |
| <b>SHEEP FEED</b>                                                      | 13.0%  | 4.1%   | -2.2%       | 4.4%                              | 27.1%                    |
| Compounds for breeding sheep                                           | 39.3%  | 17.0%  | -7.9%       | 12.4%                             | 29.9%                    |
| Blends for breeding sheep                                              | -12.5% | -15.8% | -12.9%      | -13.9%                            | 27.7%                    |
| Compounds for growing and finishing sheep                              | 17.0%  | 5.8%   | 0.5%        | 7.5%                              | 29.1%                    |
| Blends for growing and finishing sheep                                 | -15.3% | -4.3%  | -13.1%      | -10.9%                            | 1.8%                     |
| Protein concentrates (1)                                               | -5.1%  | -16.4% | 406.3%      | 48.3%                             | 12.0%                    |
| <b>HORSE FEED</b>                                                      | 15.0%  | 4.9%   | 15.1%       | 11.8%                             | 14.3%                    |
| <b>OTHER COMPOUNDS, BLENDS<br/>AND CONCENTRATES (1)</b>                | 4.0%   | 0.4%   | 31.8%       | 10.8%                             | 2.8%                     |
| <b>TOTAL COMPOUNDS, BLENDS<br/>AND CONCENTRATES (1)</b>                | 1.6%   | 1.4%   | 4.1%        | 2.4%                              | 8.3%                     |
| <b>OTHER PROCESSED FEEDINGSTUFFS<br/>FOR DELIVERY IN STRAIGHT FORM</b> | 135.9% | 111.2% | 5.8%        | 83.6%                             | 32.8%                    |
| Flaked maize and other maize products                                  | -18.2% | -13.9% | 3.6%        | -9.6%                             | 3.7%                     |
| Molassed feedingstuffs                                                 | 596.4% | 4.2%   | 5.1%        | 148.0%                            | 91.7%                    |
| All others                                                             | 108.3% | 141.5% | 6.2%        | 87.1%                             | 27.5%                    |
| <b>TOTAL ALL FEEDINGSTUFFS</b>                                         | 3.4%   | 2.8%   | 4.1%        | 3.5%                              | 8.6%                     |

(1) 'Protein Concentrates' includes Balancers.

(2) All production by Integrated Poultry Units are excluded from this table. These data are contained in Table 6a.

(3) Calf feed includes calf milk substitutes.

Enquiries: Table 2 - Tom Johnson on ++44(0)1904 455301 Email: Tom.Johnson@defra.gsi.gov.uk

**Raw materials usage in retail production of animal feedingstuffs  
in Great Britain**

**July to September 2013**

Thousand tonnes

|                                                    | JULY         | AUGUST       | SEPTEMBER *  | Crop Year<br>JULY<br>SEPTEMBER | 12 Month<br>Moving Total |
|----------------------------------------------------|--------------|--------------|--------------|--------------------------------|--------------------------|
| <b>Wheat</b>                                       | 248.3        | 239.6        | 282.8        | 770.6                          | 3,106.7                  |
| <b>Barley</b>                                      | 60.7         | 73.3         | 83.5         | 217.5                          | 898.4                    |
| <b>Oats</b>                                        | 4.9          | 6.5          | 6.0          | 17.4                           | 81.7                     |
| <b>Whole and flaked maize</b>                      | 24.0         | 21.6         | 19.9         | 65.5                           | 262.0                    |
| <b>Rice bran extractions</b>                       | 1.0          | 1.1          | 1.0          | 3.2                            | 14.6                     |
| <b>Maize gluten feed (1)</b>                       | 2.5          | 2.3          | 3.7          | 8.4                            | 29.8                     |
| <b>Cereals by-products</b>                         | 117.3        | 118.8        | 129.2        | 365.3                          | 1,628.6                  |
| of which:                                          |              |              |              |                                |                          |
| <b>Wheat Feed</b>                                  | 80.8         | 80.5         | 85.2         | 246.5                          | 1,041.1                  |
| <b>Other cereals by-products</b>                   | 16.7         | 16.6         | 19.4         | 52.8                           | 218.8                    |
| <b>Distillery by-products</b>                      | 19.8         | 21.6         | 24.6         | 66.0                           | 368.5                    |
| <b>Whole oilseeds</b>                              | 3.9          | 5.8          | 6.6          | 16.3                           | 56.7                     |
| <b>Oilseed rape cake and meal</b>                  | 42.3         | 52.8         | 61.3         | 156.5                          | 768.7                    |
| <b>Soya cake and meal</b>                          | 82.2         | 81.2         | 88.8         | 252.3                          | 1,089.8                  |
| <b>Sunflower cake and meal</b>                     | 22.3         | 18.2         | 20.6         | 61.1                           | 330.3                    |
| <b>Other oilseed cake and meal (2)</b>             | 34.1         | 34.9         | 36.3         | 105.4                          | 535.0                    |
| <b>Field beans</b>                                 | 3.1          | 3.4          | 4.3          | 10.8                           | 45.1                     |
| <b>Field peas</b>                                  | 1.9          | 1.9          | 2.3          | 6.1                            | 27.7                     |
| <b>Dried sugar beet pulp</b>                       | 21.4         | 22.3         | 24.9         | 68.6                           | 334.4                    |
| <b>Molasses</b>                                    | 23.5         | 23.3         | 25.3         | 72.1                           | 354.7                    |
| <b>Citrus and other fruit pulp</b>                 | 2.1          | 2.4          | 2.5          | 7.0                            | 31.6                     |
| <b>All meal (Fish, Poultry and other meal) (3)</b> | 10.3         | 10.4         | 12.1         | 32.9                           | 97.4                     |
| <b>Minerals</b>                                    | 31.4         | 31.7         | 36.8         | 99.9                           | 424.5                    |
| <b>Oil and fat</b>                                 | 21.4         | 21.6         | 23.7         | 66.7                           | 241.8                    |
| <b>Protein concentrates (4)</b>                    | 0.7          | 0.9          | 1.0          | 2.7                            | 11.7                     |
| <b>Other materials (5)</b>                         | 43.3         | 40.6         | 47.1         | 131.0                          | 398.0                    |
| <b>Confectionery by-products</b>                   | 17.8         | 18.7         | 18.3         | 54.8                           | 258.1                    |
| <b>TOTAL RAW MATERIALS USED</b>                    | <b>820.5</b> | <b>833.1</b> | <b>938.1</b> | <b>2,591.8</b>                 | <b>11,026.9</b>          |
| <b>Cereal Incorporation Rate</b>                   | <b>41.2%</b> | <b>40.9%</b> | <b>41.8%</b> | <b>41.3%</b>                   | <b>39.4%</b>             |

Please Note: All raw materials usage by Integrated Poultry Units has now been excluded from this table.  
The cereals usage is now included in Table 6.

- (1) Protein content 25% or below.  
(2) Cake and meal derived from Copra (coconut), Palm kernels, Shea and Illipe nuts, or any other oilseed or nuts not included in the cakes and meals above.  
(3) Comprises feather meal, dried blood and other animal by-products except fat. This definition may include meals used in feed intended for animals to which the EU ban on feeding processed animal protein does not apply.  
(4) Ready prepared products for incorporation in animal feed includes balancers.  
(5) Includes all raw materials, (including other grains) not listed elsewhere.  
\* March, June, September and December are 5 week periods. All other months are 4 week periods.  
\*\* 2004 is a 53 week statistical year. In order to incorporate the extra week January 2004 was increased to a five week period compared to 4 weeks in January 2005.

Enquiries: Table 3 - Tom Johnson on ++44(0)1904 455301 Email: tom.johnson@defra.gsi.gov.uk

**Raw materials usage in retail production of animal feedingstuffs  
in Great Britain**

Table 4

**Percentage change over corresponding period in 2012**

|                                                    | JULY        | AUGUST      | SEPTEMBER * | Crop Year<br>JULY<br>SEPTEMBER | 12 Month<br>Moving Total |
|----------------------------------------------------|-------------|-------------|-------------|--------------------------------|--------------------------|
| <b>Wheat</b>                                       | 1.2%        | 4.8%        | 4.6%        | 3.5%                           | -0.7%                    |
| <b>Barley</b>                                      | -2.5%       | -4.0%       | 13.3%       | 2.4%                           | 34.1%                    |
| <b>Oats</b>                                        | 19.2%       | 65.9%       | 5.0%        | 26.6%                          | 40.4%                    |
| <b>Whole and flaked maize</b>                      | 102.4%      | 29.0%       | 9.3%        | 39.9%                          | 100.0%                   |
| <b>Rice bran extractions</b>                       | -28.9%      | -37.7%      | -32.5%      | -33.2%                         | -12.9%                   |
| <b>Maize gluten feed (1)</b>                       | -24.5%      | -36.4%      | 2.2%        | -19.4%                         | -65.7%                   |
| <b>Cereals by-products</b>                         | 9.2%        | 6.3%        | 5.6%        | 7.0%                           | 18.1%                    |
| of which:                                          |             |             |             |                                |                          |
| <b>Wheat feed</b>                                  | 10.8%       | 8.8%        | 6.9%        | 8.8%                           | 20.7%                    |
| <b>Other cereals by-products</b>                   | 42.2%       | 19.3%       | 28.5%       | 29.3%                          | 40.1%                    |
| <b>Distillery by-products</b>                      | -13.1%      | -9.2%       | -10.8%      | -11.0%                         | 2.3%                     |
| <b>Whole oilseeds</b>                              | -4.1%       | 4.5%        | 18.6%       | 7.3%                           | 13.1%                    |
| <b>Oilseed rape cake and meal</b>                  | -7.6%       | 4.1%        | 1.8%        | -0.2%                          | 7.6%                     |
| <b>Soya cake and meal</b>                          | -13.0%      | -12.8%      | -11.3%      | -12.4%                         | -5.0%                    |
| <b>Sunflower cake and meal</b>                     | -19.8%      | -36.1%      | -26.0%      | -27.4%                         | -8.2%                    |
| <b>Other oilseed cake and meal (2)</b>             | -0.2%       | -0.6%       | -8.6%       | -3.4%                          | 11.5%                    |
| <b>Field beans</b>                                 | 5.5%        | -6.8%       | 1.9%        | -0.1%                          | -11.8%                   |
| <b>Field peas</b>                                  | -24.8%      | -12.7%      | 8.6%        | -10.6%                         | -1.6%                    |
| <b>Dried sugar beet pulp</b>                       | 1.8%        | 3.5%        | -0.3%       | 1.6%                           | 22.5%                    |
| <b>Molasses</b>                                    | 16.5%       | 6.0%        | 2.1%        | 7.7%                           | 18.8%                    |
| <b>Citrus and other fruit pulp</b>                 | -53.2%      | -46.8%      | -45.9%      | -48.6%                         | -44.2%                   |
| <b>All meal (Fish, Poultry and other meal) (3)</b> | 9.1%        | 8.9%        | 42.1%       | 19.3%                          | -0.9%                    |
| <b>Minerals</b>                                    | 5.9%        | 4.0%        | 8.9%        | 6.3%                           | 8.3%                     |
| <b>Oil and fat</b>                                 | 37.8%       | 31.3%       | 39.1%       | 36.1%                          | 33.4%                    |
| <b>Protein concentrates (4)</b>                    | -32.2%      | -17.5%      | -13.7%      | -20.9%                         | -11.4%                   |
| <b>Other materials (5)</b>                         | 62.0%       | 45.4%       | 78.9%       | 61.8%                          | 24.8%                    |
| <b>Confectionery by-products</b>                   | -20.0%      | -16.4%      | -16.2%      | -17.6%                         | 0.8%                     |
| <b>TOTAL RAW MATERIALS USED</b>                    | <b>2.8%</b> | <b>1.9%</b> | <b>4.4%</b> | <b>3.1%</b>                    | <b>8.2%</b>              |

Please Note: All raw materials usage by Integrated Poultry Units has now been excluded from this table. The cereals usage is now included in Table 6.

- (1) Protein content 25% or below.
- (2) Cake and meal derived from Copra (coconut), Palm kernels, Shea and Illipe nuts, or any other oilseed or nuts not included in the cakes and meals above.
- (3) Comprises feather meal, dried blood and other animal by-products except fat. This definition may include meals used in feed intended for animals to which the EU ban on feeding processed animal protein does not apply.
- (4) Ready prepared products for incorporation in animal feed including balancers.
- (5) Includes all raw materials, (including other grains) not listed elsewhere.

Enquiries: Table 4 - Tom Johnson on ++44(0)1904 455301 Email: tom.johnson@defra.gsi.gov.uk

Table 5

**Analysis of retail production by company type  
September 2013**

|                                                                        | INDEPENDENTS        |                       | CO-OPERATIVES<br>& NATIONALS |                       | G. B. TOTAL         |                       |
|------------------------------------------------------------------------|---------------------|-----------------------|------------------------------|-----------------------|---------------------|-----------------------|
|                                                                        | MONTH<br>% OF TOTAL | CROP YR<br>% OF TOTAL | MONTH<br>% OF TOTAL          | CROP YR<br>% OF TOTAL | MONTH<br>000 TONNES | CROP YR<br>000 TONNES |
| <b>CATTLE AND CALF FEED</b>                                            | 64.2%               | 62.9%                 | 35.8%                        | 37.1%                 | 250.2               | 691.9                 |
| Calf feed                                                              | 70.1%               | 68.8%                 | 29.9%                        | 31.2%                 | 15.9                | 41.3                  |
| Compounds for dairy cows                                               | 63.8%               | 62.1%                 | 36.2%                        | 37.9%                 | 180.9               | 503.7                 |
| All other cattle feed                                                  | 63.7%               | 63.9%                 | 36.3%                        | 36.1%                 | 53.4                | 146.8                 |
| <b>PIG FEED</b>                                                        | 28.6%               | 28.8%                 | 71.4%                        | 71.2%                 | 149.6               | 414.4                 |
| Pig starters & creep feed                                              | 71.4%               | 68.2%                 | 28.6%                        | 31.8%                 | 5.9                 | 18.0                  |
| Link/early grower feeds                                                | 77.8%               | 74.3%                 | 22.2%                        | 25.7%                 | 5.7                 | 17.7                  |
| Pig growing feed                                                       | 26.7%               | 27.1%                 | 73.3%                        | 72.9%                 | 35.8                | 103.2                 |
| Pig finishing feed                                                     | 23.7%               | 23.9%                 | 76.3%                        | 76.1%                 | 67.4                | 178.2                 |
| Pig breeding feed                                                      | 24.5%               | 24.2%                 | 75.5%                        | 75.8%                 | 34.8                | 97.3                  |
| <b>POULTRY FEED</b>                                                    | 21.9%               | 24.3%                 | 78.1%                        | 75.7%                 | 318.1               | 876.7                 |
| Chick rearing feed                                                     | 20.5%               | 21.7%                 | 79.5%                        | 78.3%                 | 11.6                | 35.5                  |
| Layer feed                                                             | 19.5%               | 20.7%                 | 80.5%                        | 79.3%                 | 90.4                | 244.2                 |
| Poultry breeding & rearing feed                                        | 13.4%               | 14.5%                 | 86.6%                        | 85.5%                 | 25.1                | 63.4                  |
| Broiler chicken, turkey and all other poultry feed                     | 24.3%               | 27.3%                 | 75.7%                        | 72.7%                 | 191.1               | 533.7                 |
| <b>SHEEP FEED</b>                                                      | 68.3%               | 64.5%                 | 31.7%                        | 35.5%                 | 24.9                | 73.3                  |
| Compounds for breeding sheep                                           | 53.0%               | 50.2%                 | 47.0%                        | 49.8%                 | 5.3                 | 15.5                  |
| Compounds for growing & finishing sheep                                | 72.5%               | 68.3%                 | 27.5%                        | 31.7%                 | 19.5                | 57.8                  |
| <b>HORSE FEED</b>                                                      | 32.3%               | 32.9%                 | 67.7%                        | 67.1%                 | 17.0                | 40.6                  |
| <b>OTHER COMPOUNDS, BLENDS<br/>AND CONCENTRATES (1)</b>                | 50.9%               | 50.8%                 | 49.1%                        | 49.2%                 | 153.0               | 415.2                 |
| <b>TOTAL COMPOUNDS, BLENDS<br/>AND CONCENTRATES (1)</b>                | 40.9%               | 41.4%                 | 59.1%                        | 58.6%                 | 912.8               | 2,512.1               |
| <b>OTHER PROCESSED FEEDINGSTUFFS<br/>FOR DELIVERY IN STRAIGHT FORM</b> | 97.3%               | 73.6%                 | 2.7%                         | 26.4%                 | 11.7                | 59.8                  |
| <b>TOTAL ALL FEEDINGSTUFFS</b>                                         | 41.6%               | 42.1%                 | 58.4%                        | 57.9%                 | 924.4               | 2,571.9               |

(1) 'Protein Concentrates' includes Balancers.

Figures rounded to the nearest final digit may not add to the totals as shown.

Enquiries: Table 5 - Tom Johnson on ++44(0)1904 455301

Email: tom.johnson@defra.gsi.gov.uk

© Crown Copyright, 2013

pg. 7

**Poultry feed production by integrated poultry units (IPU's)  
in Great Britain**

**July to September 2013**

**Table 6a**

|                                     | <b>JULY</b>  | <b>AUGUST</b>                    | <b>SEPTEMBER *</b> | <b>Crop Year<br/>JULY TO<br/>SEPTEMBER</b> | <b>12 Month<br/>Moving total</b> |
|-------------------------------------|--------------|----------------------------------|--------------------|--------------------------------------------|----------------------------------|
| <b>FEED PRODUCED BY IPU's</b>       |              |                                  |                    |                                            |                                  |
|                                     |              | <i>Amount in thousand tonnes</i> |                    |                                            |                                  |
| Broiler chicken feed                | 162.9        | 167.7                            | 207.6              | 538.2                                      | 2,108.5                          |
| Turkey feed                         | 25.1         | 26.2                             | 29.7               | 80.9                                       | 339.9                            |
| Layer feed                          | 12.8         | 13.6                             | 16.7               | 43.1                                       | 175.1                            |
| Poultry breeding & rearing feed (1) | 11.3         | 11.6                             | 13.2               | 36.0                                       | 142.5                            |
| <b>TOTAL (2)</b>                    | <b>212.1</b> | <b>219.0</b>                     | <b>267.2</b>       | <b>698.2</b>                               | <b>2,766.0</b>                   |
|                                     |              | <i>Percentage change on year</i> |                    |                                            |                                  |
| Broiler chicken feed                | -3.6%        | 0.7%                             | 1.6%               | -0.3%                                      | 3.4%                             |
| Turkey feed                         | -3.9%        | -12.0%                           | -13.8%             | -10.4%                                     | -1.5%                            |
| Layer feed                          | -4.8%        | -5.0%                            | 6.6%               | -0.8%                                      | -3.7%                            |
| Poultry breeding & rearing feed (1) | 1.9%         | 4.5%                             | -6.0%              | -0.4%                                      | 2.2%                             |
| <b>TOTAL (2)</b>                    | <b>-3.4%</b> | <b>-1.2%</b>                     | <b>-0.5%</b>       | <b>-1.6%</b>                               | <b>2.2%</b>                      |
| <b>CEREAL USAGE BY IPU's</b>        |              |                                  |                    |                                            |                                  |
|                                     |              | <i>Amount in thousand tonnes</i> |                    |                                            |                                  |
| Wheat                               | 119.2        | 122.7                            | 155.1              | 397.0                                      | 1,589.9                          |
| Barley                              | 5.3          | 6.1                              | 7.8                | 19.2                                       | 77.0                             |
| Others                              | 10.0         | 9.3                              | 4.9                | 24.1                                       | 77.0                             |
| <b>TOTAL</b>                        | <b>134.5</b> | <b>138.1</b>                     | <b>167.8</b>       | <b>440.4</b>                               | <b>1,743.9</b>                   |
|                                     |              | <i>Percentage change on year</i> |                    |                                            |                                  |
| Wheat                               | -10.1%       | -5.9%                            | -2.9%              | -6.1%                                      | -2.5%                            |
| Barley                              | 19.4%        | -16.0%                           | -0.7%              | -1.9%                                      | 38.3%                            |
| <b>TOTAL</b>                        | <b>-2.5%</b> | <b>-0.8%</b>                     | <b>-0.7%</b>       | <b>-1.3%</b>                               | <b>2.6%</b>                      |
| <b>CEREAL INCORPORATION RATE</b>    | <b>62.8%</b> | <b>62.5%</b>                     | <b>62.4%</b>       | <b>62.5%</b>                               | <b>62.5%</b>                     |

**Total poultry feed production**

**Table 6b**

|                                                  | <b>JULY</b>  | <b>AUGUST</b>                    | <b>SEPTEMBER *</b> | <b>Crop Year<br/>JULY TO<br/>SEPTEMBER</b> | <b>12 Month<br/>Moving total</b> |
|--------------------------------------------------|--------------|----------------------------------|--------------------|--------------------------------------------|----------------------------------|
| <b>TOTAL PRODUCTION<br/>OF POULTRY COMPOUNDS</b> |              |                                  |                    |                                            |                                  |
|                                                  |              | <i>Amount in thousand tonnes</i> |                    |                                            |                                  |
| Broiler chicken feed                             | 276.7        | 282.1                            | 350.4              | 909.2                                      | 3,537.8                          |
| Layer feed                                       | 90.5         | 89.6                             | 107.1              | 287.3                                      | 1,169.2                          |
| Poultry breeding & rearing feed (1)              | 42.6         | 42.5                             | 49.8               | 134.9                                      | 548.5                            |
| <b>TOTAL (2)</b>                                 | <b>446.4</b> | <b>455.2</b>                     | <b>561.2</b>       | <b>1,462.8</b>                             | <b>5,793.7</b>                   |
|                                                  |              | <i>Percentage change on year</i> |                    |                                            |                                  |
| Broiler chicken feed                             | 1.2%         | 4.4%                             | 5.1%               | 3.6%                                       | 6.2%                             |
| Turkey feed                                      | -4.4%        | -8.1%                            | -4.7%              | -5.7%                                      | 1.4%                             |
| Layer feed                                       | -2.6%        | -5.3%                            | 8.5%               | 0.3%                                       | 0.7%                             |
| Poultry breeding & rearing feed (1)              | -6.0%        | -2.5%                            | -2.9%              | -3.8%                                      | 1.7%                             |
| <b>TOTAL (2)</b>                                 | <b>-0.8%</b> | <b>0.5%</b>                      | <b>3.9%</b>        | <b>1.4%</b>                                | <b>4.2%</b>                      |

Note:

(1) Includes Chick Rearing Feed

(2) Total excludes Protein Concentrates and Other Poultry Compounds

\* March, June, September and December are 5 week periods. All other months are 4 week periods.

\*\* 2010 is a 53 week statistical year. In order to incorporate the extra week January 2010 was increased to a five week period compared to 4 weeks in January 2009.

Enquiries: Table 6a & 6b - Tom Johnson on ++44(0)1904 455301 Email: tom.johnson@defra.gsi.gov.uk



This table has been updated. Next update on 6th February 2014

**Average compound feed prices by main livestock categories  
Great Britain**

(£ per Tonne)

| Period         | CATTLE &<br>CALF FEED (1) | PIG FEED | POULTRY FEED (2) | SHEEP FEED (3) |
|----------------|---------------------------|----------|------------------|----------------|
| Jan to Mar 06  | 127                       | 148      | 139              | 124            |
| Jul to Sep 06  | 127                       | 152      | 151              | 132            |
| Oct to Dec 06  | 131                       | 158      | 149              | 131            |
| Jan to Mar 07  | 134                       | 162      | 158              | 132            |
| Apr to Jun 07  | 138                       | 164      | 165              | 140            |
| Jul to Sep 07  | 147                       | 173      | 176              | 154            |
| Oct to Dec 07  | 165                       | 197      | 191              | 167            |
| Jan to Mar 08  | 171                       | 209      | 215              | 172            |
| Apr to Jun 08  | 192                       | 218      | 236              | 185            |
| Jul to Sep 08  | 206                       | 219      | 240              | 205            |
| Oct to Dec 08  | 199                       | 210      | 213              | 187            |
| Jan to Mar 09  | 198                       | 210      | 215              | 183            |
| Apr to Jun 09  | 189                       | 214      | 225              | 186            |
| Jul to Sep 09  | 180                       | 209      | 222              | 184            |
| Oct to Dec 09  | 177                       | 204      | 206              | 170            |
| Jan to Mar 10  | 181                       | 210      | 209              | 169            |
| Apr to Jun 10  | 178                       | 208      | 217              | 174            |
| Jul to Sept 10 | 180                       | 214      | 224              | 182            |
| Oct to Dec 10  | 198                       | 236      | 242              | 196            |
| Jan to Mar 11  | 208                       | 253      | 264              | 205            |
| Apr to Jun 11  | 219                       | 261      | 280              | 216            |
| Jul to Sept 11 | 222                       | 258      | 278              | 218            |
| Oct to Dec 11  | 222                       | 248      | 257              | 215            |
| Jan to Mar 12  | 221                       | 248      | 253              | 213            |
| Apr to Jun 12  | 223                       | 259      | 268              | 222            |
| Jul to Sep 12  | 232                       | 270      | 279              | 235            |
| Oct to Dec 12  | 250                       | 284      | 282              | 243            |
| Jan to Mar 13  | 253                       | 291      | 310              | 247            |
| Apr to Jun 13  | 253                       | 288      | 311              | 257            |
| Jul to Sept 13 | 248                       | 274      | 297              | 258            |

Notes:

(1) Excludes prices for Calf Milk Substitutes

(2) The average poultry feed price is weighted by production of compounds from sales compounders only and excludes production from Integrated Poultry Units.

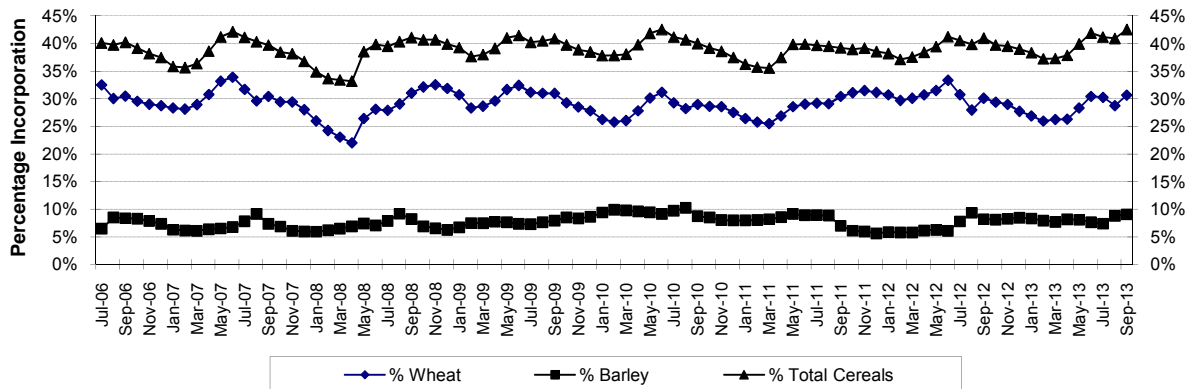
(3) The above trends in sheep feed prices may not reflect those of individual compounds.

They are weighted by the very seasonal production of compounds in each month.

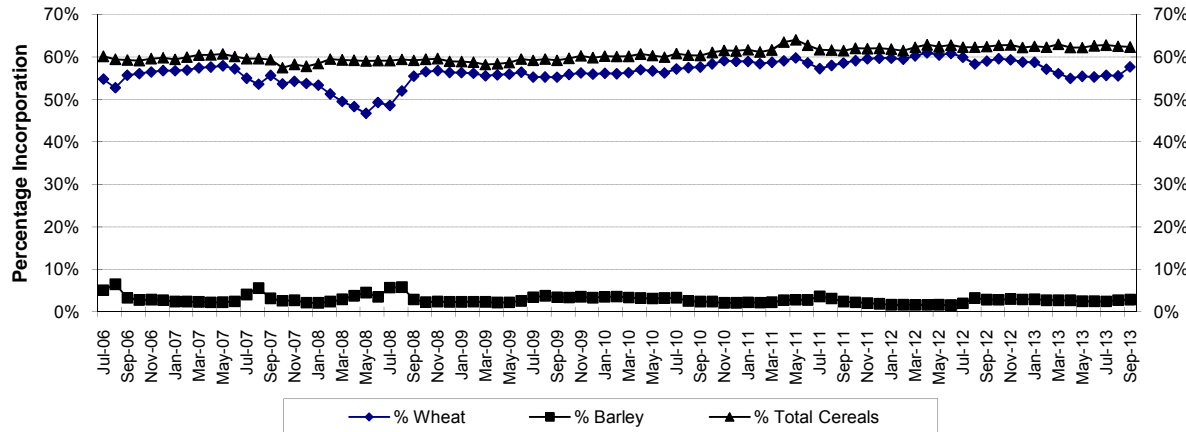
Summer prices are largely influenced by changes to the prices of finishing compounds,

whereas winter prices are largely influenced by breeding compounds.

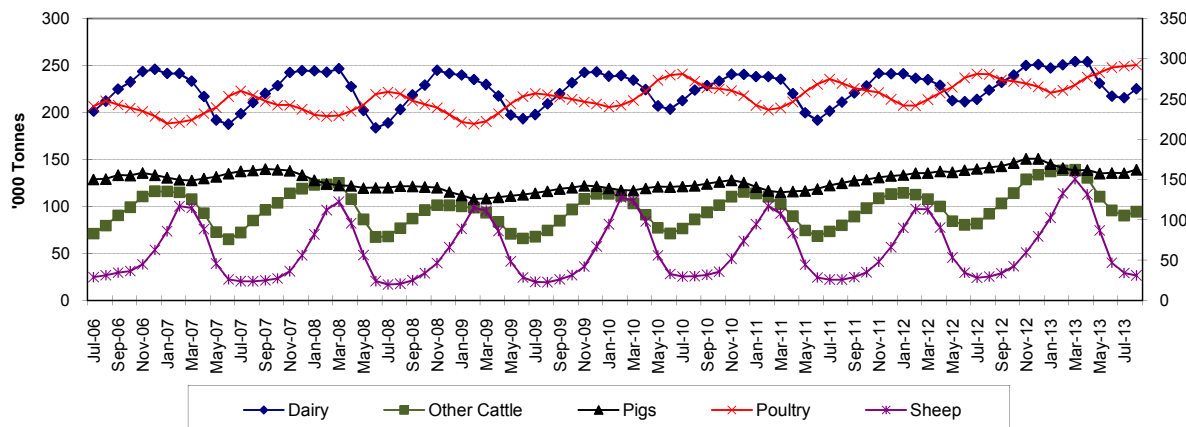
### Retail Production of Animal Feedingsuffs - Cereal Incorporation Rates



### Integrated Poultry Units - Cereal Incorporation Rates



### Retail Production of Animal Feedingsuffs by Sector 3 monthly averages



## **Animal Feed Statistics for Great Britain - September 2013**

### **Methodology, Notes and Revisions Policy**

#### ***User Statement***

The information in this notice is used by the UK government and the EU as evidence for assessing market conditions and evaluating agricultural policy. Other users include the food and farming industry, academia and the general public. Contact details are available on the front page of this notice, for you to send feedback or ask questions about the information provided.

#### ***Survey Methodology***

The Retail Production of Animal Feedingstuffs and the Animal Compound Feedingstuffs: Sales Value and Volume are compulsory surveys which collect data under the Statistics of Trade Act 1947.

#### ***Retail Production of Animal Feedingstuffs***

The data quoted in this release are from the survey returns of all of the major GB animal feed companies. Data on raw material use, stocks and production of the various categories of compound animal feed are recorded. The major producers typically cover 90% of total animal feed production surveyed each month. The remaining smaller companies are sampled annually in December for their figures in the preceeding 12 months. The survey data is published each month. Weighting is used for the monthly results to include a suitable estimate for the smaller companies that have not been sampled to provide more robust and realistic monthly estimates. This reduces the chance of a large increase in the crop-year to date totals when the actual annual returns are incorporated into the data. This usually occurs in May when estimates for the previous year are replaced with the actual data; seasonality is also factored in where this is relevant ie sheep and cattle and calf feed. Totals for the current crop year to date are shown (July onwards) as well as the most recent month.

#### ***Update: 10th May 2013***

2012 data collected from smaller mills has been used as a basis to produce estimates for this statistical notice and future statistical notices. We have seen an increase in 2012 data from smaller mills as we conducted a register exercise to obtain data from mills that were not previously surveyed. Animal feed production from smaller mills has increased by just over 250,000t with an increase in cereal usage of just over 130,000t.

#### ***Average Compound Feed Prices by Main Livestock Categories***

The data quoted in this release are from the survey returns of all of the major GB animal feed companies. Data on sales relating to the volume of animal feed sold and the value of sales are recorded. This data is collected on a quarterly basis and published in February, May, August and November.

#### ***Poultry Feed Production by Integrated Poultry Units***

The data quoted in this release are from the voluntary survey returns of all of the major GB poultry feed manufacturers of integrated poultry units. Data on raw material use, stocks and production of the various categories of poultry feed are recorded.

## **Animal Feed Statistics for Great Britain - September 2013**

### **Methodology, Notes and Revisions Policy**

#### ***Accuracy and Reliability of the Results***

The accuracy of the survey results is very high because a census is carried out of all companies and the typical response rate is 100% per year. Occasionally data is not published when it fails strict disclosure and dominance checks. This ensures that statistics cannot be traced back to a particular company.

#### ***Revisions policy***

- a. if we have not received survey data from respondents we make an estimate based on their previous returns. These estimates will be replaced with actual survey data when it is received.
- b. survey respondents occasionally supply amended figures for previous periods.
- c. we may also revise the methodology used to raise the survey data to give UK totals.

#### ***Publications***

This survey is conducted every month and results are typically available five weeks after the collection period. They are published in a statistical release 12 times per year at pre-announced dates and the separate time series spreadsheets are updated monthly too.

Defra statistical releases and details of future publication dates can be viewed on the government website at:

<https://www.gov.uk/government/organisations/department-for-environment-food-rural-affairs/about/statistics>