



Milk Production

ISSN: 1949-1557

Released November 19, 2013, by the National Agricultural Statistics Service (NASS), Agricultural Statistics Board, United States Department of Agriculture (USDA).

October Milk Production up 1.2 Percent

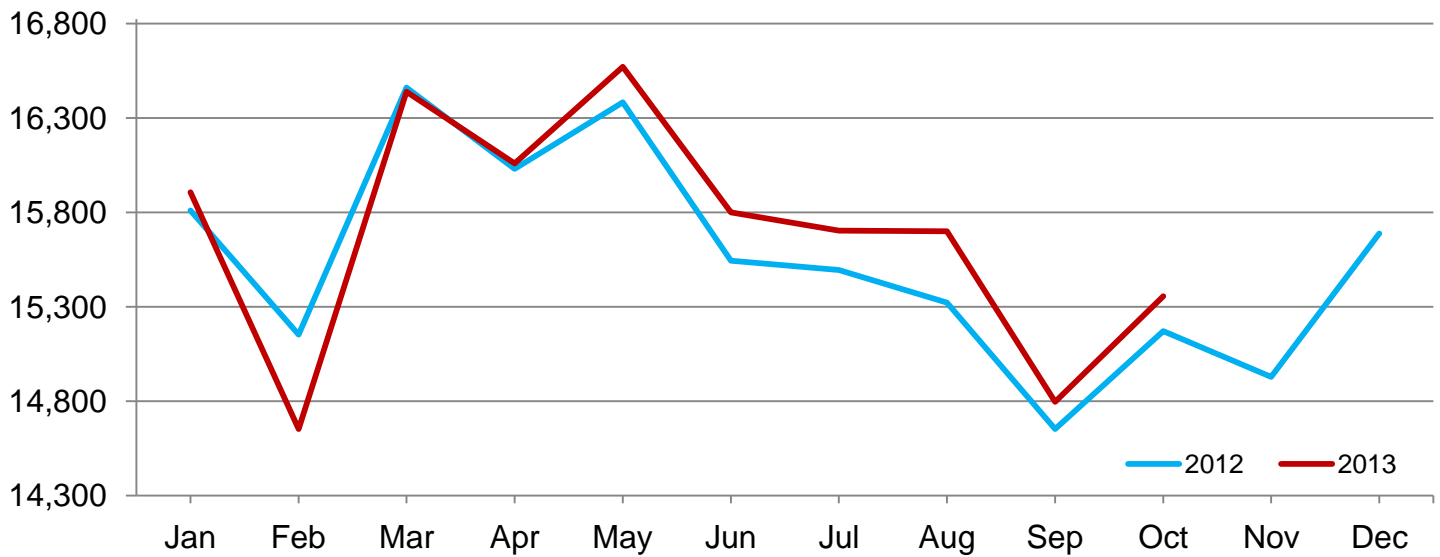
Milk production in the 23 major States during October totaled 15.4 billion pounds, up 1.2 percent from October 2012. September revised production, at 14.8 billion pounds, was up 1.0 percent from September 2012. The September revision represented a decrease of 13 million pounds or 0.1 percent from last month's preliminary production estimate.

Production per cow in the 23 major States averaged 1,806 pounds for October, 14 pounds above October 2012.

The number of milk cows on farms in the 23 major States was 8.50 million head, 36,000 head more than October 2012, but 2,000 head less than September 2013.

Monthly Milk Production – 23 Selected States

Million pounds



Milk Cows and Production by Quarter – United States: 2012 - 2013

[May not add due to rounding]

Quarter	Milk Cows ¹		Milk Per Cow ²		Milk Production ²		
	2012	2013 ³	2012	2013 ³	2012	2013	Change From 2012
	(1,000 Head)	(1,000 Head)	(Pounds)	(Pounds)	(Million Pounds)	(Million Pounds)	(Percent)
January-March	9,257		5,514		51,044	50,501	-1.1
April-June	9,259		5,563		51,509	51,962	0.9
July-September	9,211	9,226	5,284	5,355	48,675	49,406	1.5
October-December	9,203		5,335		49,096		
Annual	9,233		21,697		200,324		

¹ Includes dry cows. Excludes heifers not yet fresh.

² Excludes milk sucked by calves.

³ Survey was not conducted in April and July resulting in no milk cow and milk per cow data for March through June.

Milk Cows and Production By Month – 23 Selected States: 2012 - 2013

Month	Milk cows ¹		Milk per cow ²		Milk production ²		
	2012	2013 ³	2012	2013 ³	2012	2013	Change from 2012
	(1,000 head)	(1,000 head)	(pounds)	(pounds)	(million pounds)	(million pounds)	(percent)
January	8,502	8,498	1,860	1,872	15,810	15,907	0.6
February	8,513	8,502	1,780	1,723	15,153	14,653	-3.3
March	8,525		1,931		16,462	16,440	-0.1
April	8,529		1,880		16,031	16,059	0.2
May	8,525		1,922		16,384	16,572	1.1
June	8,509		1,827		15,544	15,801	1.7
July	8,494	8,529	1,824	1,841	15,495	15,703	1.3
August	8,492	8,525	1,804	1,842	15,322	15,700	2.5
September	8,473	8,505	1,729	1,740	14,653	14,797	1.0
October	8,467	8,503	1,792	1,806	15,172	15,356	1.2
November	8,478		1,761		14,929		
December	8,494		1,847		15,688		
Annual	8,500		21,957		186,643		

¹ Includes dry cows; excludes heifers not yet fresh.

² Excludes milk sucked by calves.

³ Survey was not conducted in April and July resulting in no milk cow and milk per cow data for March through June.

Estimated Milk Cows and Production By Month – United States: 2012 - 2013

Month	Milk cows ¹		Milk per cow ²		Milk production ²		
	2012	2013 ³	2012	2013 ³	2012	2013	Change from 2012
	(1,000 head)	(1,000 head)	(pounds)	(pounds)	(million pounds)	(million pounds)	(percent)
January	9,242	9,222	1,841	1,853	17,016	17,091	0.4
February	9,257	9,226	1,762	1,707	16,310	15,745	-3.5
March	9,271		1,911		17,718	17,665	-0.3
April	9,273		1,858		17,232	17,241	0.1
May	9,263		1,900		17,601	17,783	1.0
June	9,241		1,805		16,676	16,938	1.6
July	9,222	9,242	1,798	1,817	16,585	16,792	1.2
August	9,217	9,232	1,780	1,819	16,403	16,790	2.4
September	9,195	9,205	1,706	1,719	15,687	15,824	0.9
October	9,189	9,202	1,770	1,785	16,267	16,425	1.0
November	9,201		1,740		16,008		
December	9,218		1,825		16,821		
Annual	9,233		21,697		200,324		

¹ Includes dry cows; excludes heifers not yet fresh.

² Excludes milk sucked by calves.

³ Survey was not conducted in April and July resulting in no milk cow and milk per cow data for March through June.

Milk Cows and Production – 23 Selected States: October 2012 and 2013

[May not add due to rounding]

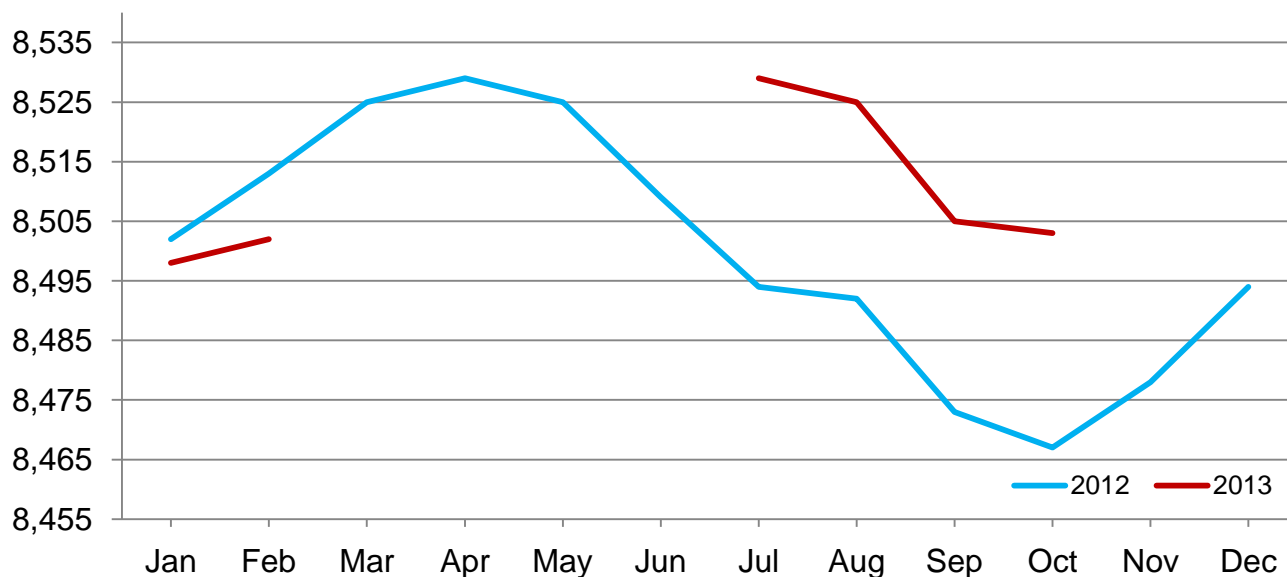
State	Milk cows ¹		Milk per cow ²		Milk production ²		Change from 2012 (percent)
	2012	2013	2012	2013	2012	2013	
	(1,000 head)	(1,000 head)	(pounds)	(pounds)	(million pounds)	(million pounds)	
Arizona	183	190	1,875	1,880	343	357	4.1
California	1,778	1,781	1,860	1,875	3,307	3,339	1.0
Colorado	135	137	2,015	2,030	272	278	2.2
Florida	122	122	1,310	1,380	160	168	5.0
Idaho	577	570	1,970	1,940	1,137	1,106	-2.7
Illinois	100	98	1,570	1,580	157	155	-1.3
Indiana	172	177	1,735	1,780	298	315	5.7
Iowa	203	206	1,795	1,835	364	378	3.8
Kansas	127	134	1,805	1,810	229	243	6.1
Michigan	374	381	1,990	2,005	744	764	2.7
Minnesota	465	465	1,605	1,600	746	744	-0.3
Missouri	93	90	1,180	1,190	110	107	-2.7
New Mexico	324	322	2,025	2,025	656	652	-0.6
New York	610	610	1,775	1,825	1,083	1,113	2.8
Ohio	270	269	1,650	1,630	446	438	-1.8
Oregon	123	123	1,685	1,690	207	208	0.5
Pennsylvania	533	532	1,620	1,625	863	865	0.2
Texas	430	440	1,795	1,820	772	801	3.8
Utah	88	92	1,810	1,820	159	167	5.0
Vermont	133	132	1,595	1,620	212	214	0.9
Virginia	95	94	1,465	1,520	139	143	2.9
Washington	261	266	1,960	1,970	512	524	2.3
Wisconsin	1,271	1,272	1,775	1,790	2,256	2,277	0.9
23-State Total	8,467	8,503	1,792	1,806	15,172	15,356	1.2

¹ Average number during year, excluding heifers not yet fresh.

² Excludes milk sucked by calves.

Monthly Milk Cows – 23 Selected States

Pounds



Milk Cows and Production – 23 Selected States: September 2012 and 2013

[May not add due to rounding]

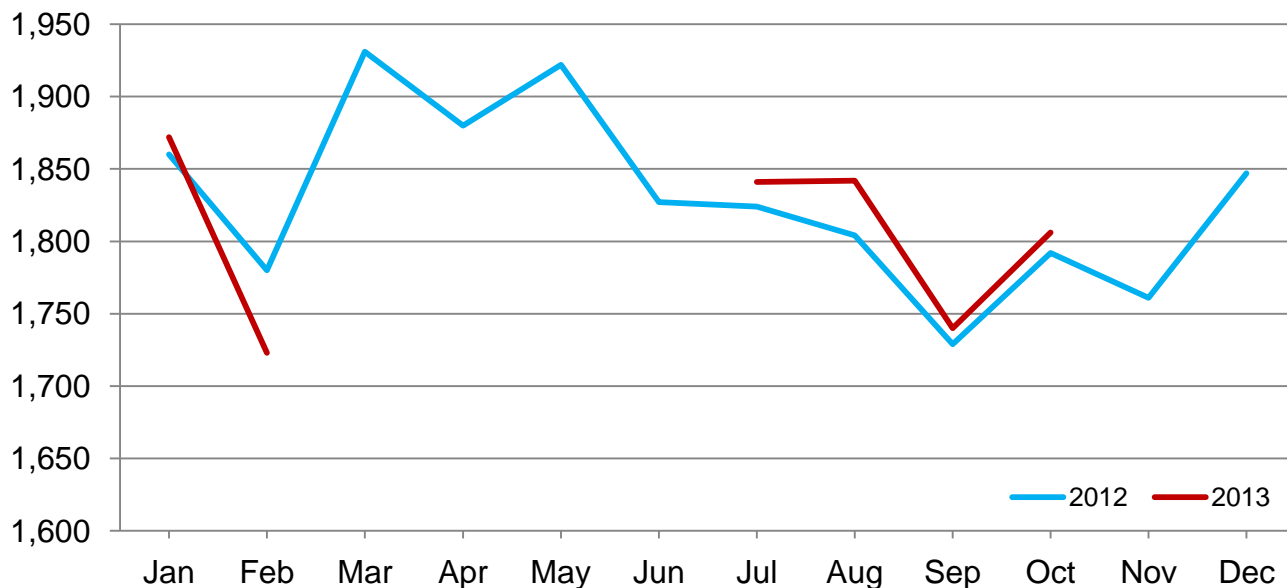
	Milk cows ¹		Milk per cow ²		Milk Production ²		Change from 2012
	2012	2013	2012	2013	2012	2013	
	(1,000 head)	(1,000 head)	(pounds)	(pounds)	(million pounds)	(million pounds)	(percent)
Arizona	181	188	1,745	1,720	316	323	2.2
California	1,779	1,781	1,790	1,795	3,184	3,197	0.4
Colorado	135	137	1,955	1,965	264	269	1.9
Florida	123	123	1,250	1,325	154	163	5.8
Idaho	579	570	1,930	1,930	1,117	1,100	-1.5
Illinois	100	98	1,470	1,490	147	146	-0.7
Indiana	174	177	1,685	1,710	293	303	3.4
Iowa	201	206	1,720	1,745	346	359	3.8
Kansas	126	134	1,740	1,720	219	230	5.0
Michigan	374	381	1,900	1,930	711	735	3.4
Minnesota	465	465	1,550	1,560	721	725	0.6
Missouri	93	91	1,110	1,110	103	101	-1.9
New Mexico	326	322	1,960	1,940	639	625	-2.2
New York	610	610	1,740	1,770	1,061	1,080	1.8
Ohio	270	270	1,540	1,545	416	417	0.2
Oregon	123	123	1,665	1,650	205	203	-1.0
Pennsylvania	533	532	1,545	1,570	823	835	1.5
Texas	433	440	1,705	1,700	738	748	1.4
Utah	88	91	1,760	1,780	155	162	4.5
Vermont	133	133	1,550	1,560	206	207	0.5
Virginia	95	95	1,380	1,430	131	136	3.8
Washington	261	266	1,935	1,930	505	513	1.6
Wisconsin	1,271	1,272	1,730	1,745	2,199	2,220	1.0
23-State Total	8,473	8,505	1,729	1,740	14,653	14,797	1.0

¹ Average number during year, excluding heifers not yet fresh.

² Excludes milk sucked by calves.

Monthly Milk per Cow – 23 Selected States

Pounds



Statistical Methodology

Survey Procedures: Primary data used to determine these estimates were obtained from a sample of producers. Individual States maintain a list of all known milk producers and information on the size of their herd. States use all known sources of producers to ensure that their lists are as complete as possible. Generally, all large producers and a sample of small producers are included in the survey. Questionnaires are mailed to producers near the end of the month to obtain data for the first day of the month. Additional reports are obtained by telephone, as needed, to supplement the mail response. Where feasible, States utilize state and federal administrative data to estimate milk production. This eliminates duplication of data gathering by different government agencies. Indications of milk cow inventory are also obtained in the January Cattle Surveys.

Estimation Procedures: State offices prepare these estimates by using a combination of survey indications, historic trends, and any available administrative data. Individual State estimates are reviewed by the Agricultural Statistics Board for reasonableness.

Revision Policy: Milk production, milk per cow, and number of milk cows are subject to revision the following month after initial publication for monthly States or the following quarter for the quarterly States. Normally, administrative data from Federal Market Orders, State Departments of Agriculture, or other sources are the main basis for revisions. However, administrative data for all States may not be available in time for these revisions. Estimates are again subject to revisions in February each year based on additional administrative data. In the event that additional changes are necessary, a third revision is possible in February the following year. Estimates are again reviewed after data from the five-year Census of Agriculture are available. No revisions are made after that date.

Reliability: Since all operations with dairy animals are not included in the sample, survey estimates are subject to sampling variability. Survey results are also subject to non-sampling errors such as omissions, duplications, and mistakes in reporting, recording, and processing the data. The effects of these errors cannot be measured directly. They are minimized through rigid quality controls in the data collection process and through a careful review of all reported data for consistency and reasonableness.

To assist users in evaluating the reliability of the estimates in this report, the "Root Mean Square Error" is shown for selected items in the table below. The "Root Mean Square Error" is a statistical measure based on past performance and is computed using the differences between first and final estimates. The "Root Mean Square Error" for the 23 State milk production estimates over the past 24 months is 0.1 percent. This means that chances are 2 out of 3 that the final estimate will not be above or below the current estimate of 15.4 billion pounds by more than 0.1 percent. Chances are 9 out of 10 that the difference will not exceed 0.2 percent.

Reliability of Monthly Milk Production Estimates

[Based on data for the past 24 months]

Item	Root mean square error	90 percent confidence level	Difference between first and latest estimate				
			Average	Smallest	Largest	Months	
						Below latest	Above latest
	(percent)	(percent)	(1,000)	(1,000)	(1,000)	(number)	(number)
Milk production	0.1	0.2	16	0	48	12	10
All Milk cows	0.0	0.1	3	0	8	15	8

Information Contacts

Listed below are the commodity specialists in the Livestock Branch of the National Agricultural Statistics Service to contact for additional information. E-mail inquiries may be sent to nass@nass.usda.gov

Dan Kerestes, Chief, Livestock Branch	(202) 720-3570
Scott Hollis, Head, Livestock Section	(202) 690-2424
Travis Averill – Cattle, Cattle on Feed	(202) 720-3040
Doug Bounds – Hogs and Pigs	(202) 720-3106
Alissa Cowell-Mytar – Sheep and Goats	(202) 720-4751
Donnie Fike – Dairy Products	(202) 690-3236
Tiffany Hora – Livestock Slaughter	(515) 284-4340
Mike Miller – Milk Production and Milk Cows	(202) 720-3278

Access to NASS Reports

For your convenience, you may access NASS reports and products the following ways:

- All reports are available electronically, at no cost, on the NASS web site: <http://www.nass.usda.gov>
- Both national and state specific reports are available via a free e-mail subscription. To set-up this free subscription, visit <http://www.nass.usda.gov> and in the “Follow NASS” box under “Receive reports by Email,” click on “National” or “State” to select the reports you would like to receive.

For more information on NASS surveys and reports, call the NASS Agricultural Statistics Hotline at (800) 727-9540, 7:30 a.m. to 4:00 p.m. ET, or e-mail: nass@nass.usda.gov.

The U.S. Department of Agriculture (USDA) prohibits discrimination against its customers, employees, and applicants for employment on the bases of race, color, national origin, age, disability, sex, gender identity, religion, reprisal, and where applicable, political beliefs, marital status, familial or parental status, sexual orientation, or all or part of an individual's income is derived from any public assistance program, or protected genetic information in employment or in any program or activity conducted or funded by the Department. (Not all prohibited bases will apply to all programs and/or employment activities.)

If you wish to file a Civil Rights program complaint of discrimination, complete the [USDA Program Discrimination Complaint Form](#) (PDF), found online at http://www.ascr.usda.gov/complaint_filing_cust.html, or at any USDA office, or call (866) 632-9992 to request the form. You may also write a letter containing all of the information requested in the form. Send your completed complaint form or letter to us by mail at U.S. Department of Agriculture, Director, Office of Adjudication, 1400 Independence Avenue, S.W., Washington, D.C. 20250-9410, by fax (202) 690-7442 or email at program.intake@usda.gov.