



Released March 31, 2014, by the National Agricultural Statistics Service (NASS), Agricultural Statistics Board, United States Department of Agriculture (USDA).

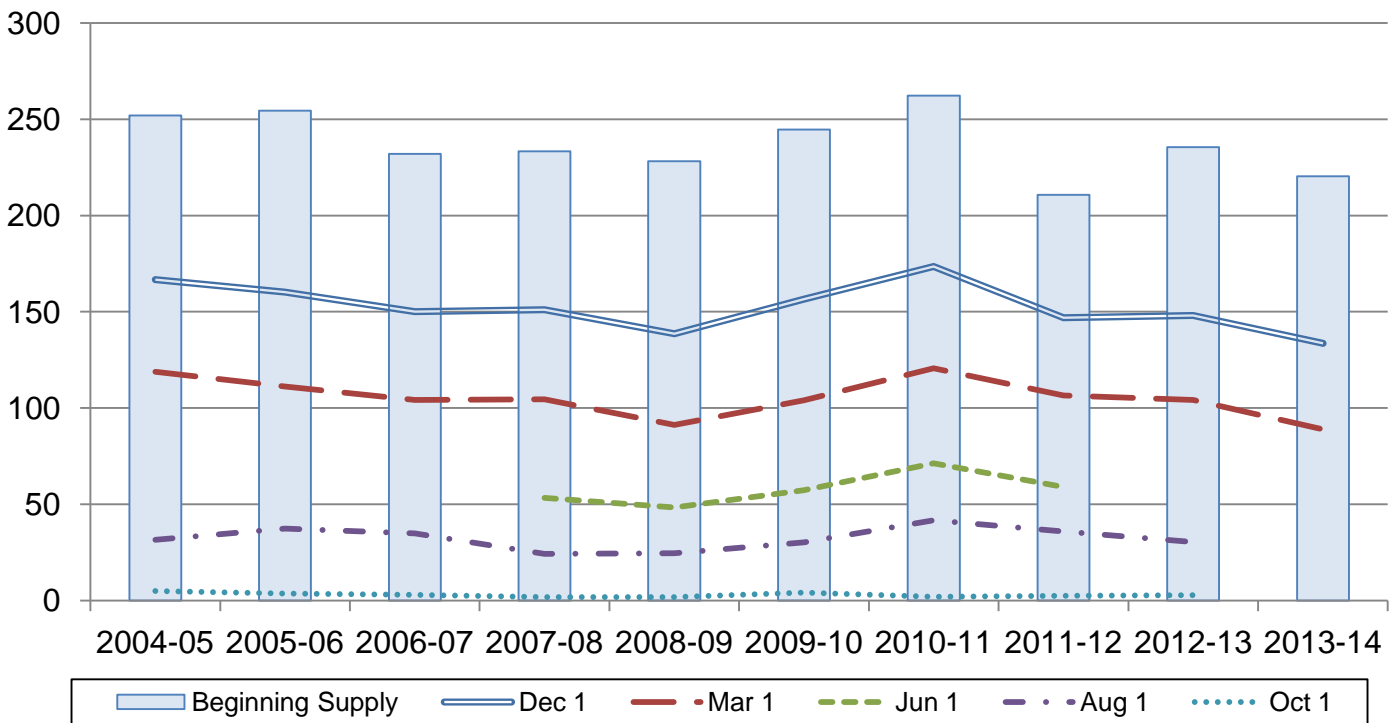
Rough Rice Stocks Down 15 Percent from March 2013

Rough rice stocks in all positions on March 1, 2014, totaled 89.0 million hundredweight (cwt), down 15 percent from the total on March 1, 2013. Stocks held on farms totaled 15.0 million cwt, and off-farm stocks totaled 74.0 million cwt. Long grain varieties accounted for 63 percent of the total rough rice, medium grain accounted for 34 percent, and short grain varieties accounted for 3 percent.

Milled rice stocks in all positions totaled 5.84 million cwt, down 12 percent from a year ago. Milled rice stocks were comprised of 4.01 million cwt of whole kernel rice and 1.83 million cwt of second heads, screenings, and brewers rice.

Rough Rice Stocks – United States

Million cwt



Rice Stocks by Position and Month in Domestic Units – United States: 2013 and 2014

[Blank data cells indicate estimation period has not yet begun]

Date	2013			2014		
	On farms	Off farms ¹	Total all positions	On farms	Off farms ¹	Total all positions
	(1,000 cwt)	(1,000 cwt)	(1,000 cwt)	(1,000 cwt)	(1,000 cwt)	(1,000 cwt)
Rough rice						
March 1	18,430	85,839	104,269	14,995	73,959	88,954
June 1	(NA)	(NA)	(NA)			
August 1	640	29,880	30,520			
October 1 ²	20	2,906	2,926			
December 1	36,935	96,636	133,571			
Milled rice						
March 1	(X)	6,665	6,665	(X)	5,844	5,844
June 1	(X)	(NA)	(NA)	(X)		
August 1	(X)	4,132	4,132	(X)		
October 1 ²	(X)	1,210	1,210	(X)		
December 1	(X)	6,605	6,605	(X)		

(NA) Not available.

(X) Not applicable.

¹ Includes stocks at mills, elevators, warehouses, ports, and in transit.

² California only.

Rice Stocks by Position and Month in Metric Units – United States: 2013 and 2014

[Data may not add to totals due to rounding. Blank data cells indicate estimation period has not yet begun]

Date	2013			2014		
	On farms	Off farms ¹	Total all positions	On farms	Off farms ¹	Total all positions
	(metric tons)	(metric tons)	(metric tons)	(metric tons)	(metric tons)	(metric tons)
Rough rice						
March 1	835,970	3,893,590	4,729,560	680,160	3,354,720	4,034,890
June 1	(NA)	(NA)	(NA)			
August 1	29,030	1,355,330	1,384,360			
October 1 ²	910	131,810	132,720			
December 1	1,675,340	4,383,340	6,058,680			
Milled rice						
March 1	(X)	302,320	302,320	(X)	265,080	265,080
June 1	(X)	(NA)	(NA)	(X)		
August 1	(X)	187,420	187,420	(X)		
October 1 ²	(X)	54,880	54,880	(X)		
December 1	(X)	299,600	299,600	(X)		

(NA) Not available.

(X) Not applicable.

¹ Includes stocks at mills, elevators, warehouses, ports, and in transit.

² California only.

Rice Stocks by Position – States and United States: March 1, 2013 and 2014

State	2013			2014		
	On farms	Off farms ¹	Total all positions	On farms	Off farms ¹	Total all positions
	(1,000 Cwt)	(1,000 Cwt)	(1,000 Cwt)	(1,000 Cwt)	(1,000 Cwt)	(1,000 Cwt)
Rough rice						
Arkansas	11,400	46,552	57,952	9,100	33,006	42,106
California	1,810	24,821	26,631	1,815	26,002	27,817
Louisiana	2,000	5,208	7,208	1,600	5,642	7,242
Mississippi	(D)	(D)	2,473	(D)	(D)	2,242
Missouri	(D)	(D)	4,779	(D)	(D)	3,338
Texas	460	4,766	5,226	820	5,389	6,209
Unallocated ²	2,760	4,492	-	1,660	3,920	-
United States	18,430	85,839	104,269	14,995	73,959	88,954
Milled rice						
Arkansas	(X)	2,196	2,196	(X)	(D)	(D)
California	(X)	2,217	2,217	(X)	2,716	2,716
Louisiana	(X)	1,148	1,148	(X)	(D)	(D)
Mississippi	(X)	(D)	(D)	(X)	(D)	(D)
Missouri	(X)	(D)	(D)	(X)	(D)	(D)
Texas	(X)	832	832	(X)	702	702
Unallocated ²	(X)	272	272	(X)	2,426	2,426
United States	(X)	6,665	6,665	(X)	5,844	5,844

- Represents zero.

(D) Withheld to avoid disclosing data for individual operations.

(X) Not applicable.

¹ Includes stocks at mills, elevators, warehouses, ports, and in transit.

² Unallocated includes State data withheld to avoid disclosure of individual operations.

**Rough Rice Stocks By Length of Grain in All Positions – States and United States:
March 1, 2013 and 2014**

State	Long		Medium		Short		Total	
	2013	2014	2013	2014	2013	2014	2013	2014
	(1,000 cwt)	(1,000 cwt)	(1,000 cwt)	(1,000 cwt)	(1,000 cwt)	(1,000 cwt)	(1,000 cwt)	(1,000 cwt)
California	(D)	(D)	23,845	25,113	(D)	(D)	26,631	27,817
Other States ¹	(D)	(D)	8,713	5,368	(D)	(D)	77,638	61,137
United States	69,313	56,125	32,558	30,481	2,398	2,348	104,269	88,954

(D) Withheld to avoid disclosing data for individual operations.

¹ Other States include Arkansas, Louisiana, Mississippi, Missouri, and Texas.

**Milled Rice Stocks by Length of Grain in All Positions – States and United States:
March 1, 2013 and 2014**

State	Whole kernels (head rice)							
	Long		Medium		Short		Total	
	2013	2014	2013	2014	2013	2014	2013	2014
	(1,000 cwt)	(1,000 cwt)	(1,000 cwt)	(1,000 cwt)	(1,000 cwt)	(1,000 cwt)	(1,000 cwt)	(1,000 cwt)
California	(D)	(D)	599	1,490	(D)	(D)	663	1,541
Other States ¹	(D)	(D)	173	94	(D)	(D)	3,317	2,470
United States	3,144	2,379	772	1,584	64	48	3,980	4,011

State	Broken kernels							
	Second heads		Screenings ²		Brewers		Total	
	2013	2014	2013	2014	2013	2014	2013	2014
	(1,000 cwt)	(1,000 cwt)	(1,000 cwt)	(1,000 cwt)	(1,000 cwt)	(1,000 cwt)	(1,000 cwt)	(1,000 cwt)
California	(D)	(D)	-	-	(D)	(D)	1,554	1,175
Other States ¹	(D)	(D)	271	118	(D)	(D)	1,131	658
United States	1,225	1,064	271	118	1,189	651	2,685	1,833

- Represents zero.

(D) Withheld to avoid disclosing data for individual operations.

¹ Other States include Arkansas, Louisiana, Mississippi, Missouri, and Texas.

² Screenings included with second heads in California.

Rice Stocks by Position – States and United States: December 1, 2012 and 2013

State	2013 2012			2014 2013		
	On farms (1,000 cwt)	Off farms ¹ (1,000 cwt)	Total all positions (1,000 cwt)	On farms (1,000 cwt)	Off farms ¹ (1,000 cwt)	Total all positions (1,000 cwt)
Rough rice						
Arkansas	21,200	53,153	74,353	18,000	38,805	56,805
California	3,015	35,592	38,607	3,120	38,294	41,414
Louisiana	6,600	8,241	14,841	8,150	7,281	15,431
Mississippi	(D)	(D)	4,018	(D)	(D)	3,486
Missouri	(D)	(D)	8,459	(D)	(D)	7,893
Texas	1,830	5,927	7,757	1,650	6,892	8,542
Unallocated ²	6,740	5,737	-	6,015	5,364	-
United States	39,385	108,650	148,035	36,935	96,636	133,571
Milled rice						
Arkansas	(X)	2,345	2,345	(X)	(D)	(D)
California	(X)	2,879	2,879	(X)	2,337	2,337
Louisiana	(X)	569	569	(X)	(D)	(D)
Mississippi	(X)	(D)	(D)	(X)	(D)	(D)
Missouri	(X)	(D)	(D)	(X)	(D)	(D)
Texas	(X)	772	772	(X)	687	687
Unallocated ²	(X)	354	354	(X)	3,581	3,581
United States	(X)	6,919	6,919	(X)	6,605	6,605

- Represents zero.

(D) Withheld to avoid disclosing data for individual operations.

(X) Not applicable.

¹ Includes stocks at mills, elevators, warehouses, ports, and in transit.

² Unallocated includes State data withheld to avoid disclosure of individual operations.

**Rough Rice Stocks By Length of Grain in All Positions – States and United States:
December 1, 2012 and 2013**

State	Long		Medium		Short		Total	
	2012	2013	2012	2013	2012	2013	2012	2013
	(1,000 cwt)	(1,000 cwt)	(1,000 cwt)	(1,000 cwt)	(1,000 cwt)	(1,000 cwt)	(1,000 cwt)	(1,000 cwt)
California	(D)	(D)	34,578	37,632	(D)	(D)	38,607	41,414
Other States ¹	(D)	(D)	10,771	7,454	(D)	(D)	109,428	92,157
United States	99,111	85,149	45,349	45,086	3,575	3,336	148,035	133,571

(D) Withheld to avoid disclosing data for individual operations.

¹ Other States include Arkansas, Louisiana, Mississippi, Missouri, and Texas.

**Milled Rice Stocks By Length of Grain in All Positions – States and United States:
December 1, 2012 and 2013**

State	Whole kernels (head rice)							
	Long		Medium		Short		Total	
	2012	2013	2012	2013	2012	2013	2012	2013
	(1,000 cwt)	(1,000 cwt)	(1,000 cwt)	(1,000 cwt)	(1,000 cwt)	(1,000 cwt)	(1,000 cwt)	(1,000 cwt)
California	(D)	(D)	(D)	1,110	(D)	(D)	1,625	1,169
Other States ¹	(D)	(D)	(D)	175	(D)	(D)	2,686	3,522
United States	2,574	3,348	1,638	1,285	99	58	4,311	4,691
State	Broken kernels							
	Second heads		Screenings ²		Brewers		Total	
	2012	2013	2012	2013	2012	2013	2012	2013
	(1,000 cwt)	(1,000 cwt)	(1,000 cwt)	(1,000 cwt)	(1,000 cwt)	(1,000 cwt)	(1,000 cwt)	(1,000 cwt)
California	(D)	(D)	-	-	(D)	(D)	1,254	1,168
Other States ¹	(D)	(D)	136	96	(D)	(D)	1,354	746
United States	1,231	1,243	136	96	1,241	575	2,608	1,914

- Represents zero.

(D) Withheld to avoid disclosing data for individual operations.

¹ Other States include Arkansas, Louisiana, Mississippi, Missouri, and Texas.

² Screenings included with second heads in California.

Statistical Methodology

Survey Procedures: The rice stocks estimates in this report are based on surveys conducted during the first two weeks of March. Separate surveys were conducted to obtain the on-farm and off-farm estimates. The on-farm stocks survey is a probability survey based on a sampling procedure that ensures all operations storing rice in the United States have a chance to be selected. These producers were asked to provide the total quantities of grain stored on their operations as of March 1, 2014 regardless of ownership. Off-farm stocks are a census of all known rice storage facilities. An effort is made to obtain reports from all off-farm facilities. Estimates are made for missing facilities to assure complete coverage.

Estimating Procedures: On-farm and off-farm survey data are reviewed at the State and national levels for reasonableness, consistency with historical estimates, and current crop size. After estimates are made for on-farm and off-farm rice stocks, the total of these two are combined and evaluated using the balance sheet approach. This method utilizes other sources of data to check the reasonableness of the stocks estimates. Estimates of production, exports, and millings are reviewed to make sure beginning stocks, production, utilization, and ending stocks are within reasonable balance and present the best possible estimate of stocks.

Revision Policy: On-farm and off-farm stocks are subject to revision in the quarter following initial publication and again in the following December 1 *Rice Stocks* report published in January each year. Revisions can be made when late reports are received, errors are detected in reporting and calculating, and when production estimates are revised. Estimates will also be reviewed after data from the 5-year Census of Agriculture are available. No revisions to these years will be made after that date.

Reliability: Reliability of the on-farm and off-farm stocks must be treated separately because the survey designs for the two surveys are drastically different. The on-farm stocks estimates are subject to sampling variability because all operations holding on-farm stocks are not included in the sample.

Survey indications are also subject to non-sampling errors such as omission, duplication, imputation for missing data, and mistakes in reporting, recording, and processing the data. Off-farm, as well as on-farm stocks, are subject to these types of errors. These errors cannot be measured directly, but they are minimized through rigid quality controls in the data collection process and a careful review of all reported data for consistency and reasonableness.

Information Contacts

Listed below are the commodity statisticians in the Crops Branch of the National Agricultural Statistics Service to contact for additional information. E-mail inquiries may be sent to nass@nass.usda.gov

Lance Honig, Chief, Crops Branch.....	(202) 720-2127
Anthony Prillaman, Head, Field Crops Section	(202) 720-2127
Cody Brokmeyer – Peanuts, Rice	(202) 720-7688
Brent Chittenden – Oats, Rye, Wheat	(202) 720-8068
Angie Considine – Cotton, Cotton Ginnings, Sorghum.....	(202) 720-5944
Tony Dahlman – Crop Weather, Barley, Hay	(202) 720-7621
Chris Hawthorn – Corn, Flaxseed, Proso Millet	(202) 720-9526
Travis Thorson – Soybeans, Sunflower, Other Oilseeds	(202) 720-7369

Access to NASS Reports

For your convenience, you may access NASS reports and products the following ways:

- All reports are available electronically, at no cost, on the NASS web site: <http://www.nass.usda.gov>
- Both national and state specific reports are available via a free e-mail subscription. To set-up this free subscription, visit <http://www.nass.usda.gov> and in the “Follow NASS” box under “Receive reports by Email,” click on “National” or “State” to select the reports you would like to receive.

For more information on NASS surveys and reports, call the NASS Agricultural Statistics Hotline at (800) 727-9540, 7:30 a.m. to 4:00 p.m. ET, or e-mail: nass@nass.usda.gov.

The U.S. Department of Agriculture (USDA) prohibits discrimination against its customers, employees, and applicants for employment on the bases of race, color, national origin, age, disability, sex, gender identity, religion, reprisal, and where applicable, political beliefs, marital status, familial or parental status, sexual orientation, or all or part of an individual's income is derived from any public assistance program, or protected genetic information in employment or in any program or activity conducted or funded by the Department. (Not all prohibited bases will apply to all programs and/or employment activities.)

If you wish to file a Civil Rights program complaint of discrimination, complete the [USDA Program Discrimination Complaint Form](#) (PDF), found online at http://www.ascr.usda.gov/complaint_filing_cust.html, or at any USDA office, or call (866) 632-9992 to request the form. You may also write a letter containing all of the information requested in the form. Send your completed complaint form or letter to us by mail at U.S. Department of Agriculture, Director, Office of Adjudication, 1400 Independence Avenue, S.W., Washington, D.C. 20250-9410, by fax (202) 690-7442 or email at program.intake@usda.gov.