



1 August 2013

United Kingdom Egg Statistics – Quarter 2, 2013

These National Statistics on UK egg packing, processing and trade were released on 1 August 2013 according to the arrangements approved by the UK Statistics Authority.

This quarterly notice will be next updated at 09:30 on 7 November 2013.

Contents

Section 1	Commentary	page 2
Section 2	UK Egg Packing and Processing Statistics	pages 3-5
Section 3	UK Egg Trade	page 6
Section 4	Methodology, notes and revisions policy	page 7

Key results

This release shows quarterly information on egg packing, usage and prices. It also includes monthly information on the trade in eggs and egg products. The key results are given below:

- 6,819 thousand cases of eggs were packed during the second quarter of 2013. Free range and organic eggs accounted for 47 per cent of these, compared to 48 per cent during quarter two of 2012.
- The volume of eggs processed during the second quarter of 2013 totalled 23 thousand tonnes. This includes a slight fall in the volume used for liquid egg production, but this is offset by a 23 per cent increase in hardboiled egg production.
- The average price paid by packers to producers for all eggs packed during quarter two 2013 was 91.0 pence per dozen, compared with 88.4 pence per dozen during quarter two 2012.

This release and associated timeseries are available online:

<https://www.gov.uk/government/publications/egg-statistics>

Enquiries to: Leigh Riley, Department for Environment, Food and Rural Affairs, Room 301, Foss House, King Pool, 1 - 2 Peasholme Green, York YO1 7PX. Tel:++ 44 (0)1904 455095 email:leigh.riley@defra.gsi.gov.uk

A National Statistics publication. National Statistics are produced to high professional standards. They undergo regular quality assurance reviews to ensure that they meet customer needs. They are produced free from any political interference. For general enquiries about National Statistics, contact the National Statistics Public Enquiry Service: tel. 0845 601 3034 email info@statistics.gov.uk. You can also find National Statistics on the internet at www.statistics.gov.uk.

Section 1: Commentary

UK egg packing, price and processing statistics

- Of the total 6.8 million cases of eggs packed by packing stations in the UK, 5.1 million (75 per cent) were packed in England and Wales. Throughput steadily increased through 2012 and now shows a 7.9 per cent increase on Quarter 2 2012.
- Broken down by type, intensive eggs accounted for 50 per cent of total throughput. Free range and organic eggs accounted for 47 per cent of the rest.
- The weighted average 'packer to producer' price of all eggs, as shown in Table 2.3, was 91p per dozen. This was an increase of 2.9 per cent compared to the same period in 2012.
- The number of eggs bought by UK egg processors totalled 1.07 million cases (equating to almost 24 thousand tonnes), a fall of 12 per cent on the same period in 2012, as shown in Table 2.4.
- Table 2.5 shows that UK egg processors produced 23 thousand tonnes of egg products. The tonnages of eggs used for egg products tend to be lower than the total tonnages purchased in the quarter due to wastage, stocks being held for future months etc.
- Liquid egg accounted for 64 per cent of the total production and shows a slight fall on the previous quarter. This has been offset by large increases in the volumes of hard boiled eggs, up by 23 per cent on the same period in 2012.

Egg trade data (sourced from HM Revenue and Customs)

- The latest trade data from HMRC shows that during the period Jan-May 2013, the UK imported 685 thousand cases of shell eggs and exported 121 thousand cases. The May figures show a 56 per cent decrease in imports to 111 thousand tonnes and the export figures show an increase of 61 per cent to 26 thousand tonnes.
- UK imports of egg products for the period Jan-May 2013 stood at 1.3 million cases (Table 3.2). Exports for the same period totalled 412 thousand cases. The significant rise is mainly due to increased exports of dried whole-egg products.

Section 2 (a): UK egg packing and price statistics

The tables in this section show quarterly information on UK egg packing and processing. Q1 refers to the period January to March, Q2 refers to the period April to June etc.

The packing station figures include throughput of both graded and ungraded eggs. The weighted average packer to producer prices, as shown in table 2.3, are weighted according to the volume of throughput of each egg type by each packing station. From 1st January 2012, egg producers were legally required to house laying hens in enriched colony systems only.

Table 2.1: UK Packing Station Egg Throughput by Country

Period		E&W	Scot	NI	UK	thousand cases % change on previous year
2011	Q1	5,102	1,062	690	6,854	5.5%
	Q2	5,249	958	673	6,880	2.9%
	Q3	5,040	898	693	6,632	-4.2%
	Q4	4,974	926	655	6,555	-5.9%
	Total	20,365	3,845	2,711	26,921	-0.5%
2012	Q1	4,875	1,003	628	6,506	-5.1%
	Q2	4,751	908	660	6,319	-8.2%
	Q3	4,836	955	709	6,501	-2.0%
	Q4	4,966	967	663	6,596	0.6%
	Total	19,428	3,834	2,660	25,922	-3.7%
2013	Q1	5,088	942	693	6,723	3.3%
	Q2	5,119	975	725	6,819	7.9%

Table 2.2: UK Packing Station Egg Throughput by Egg Production Type

Period		Intensive	Barn	Free Range	Organic	Total	thousand cases
2011	Q1	3,343	291	3,007	212	6,854	
	Q2	3,305	277	3,055	243	6,880	
	Q3	3,300	248	2,875	209	6,632	
	Q4	3,180	259	2,943	174	6,555	
	Total	13,128	1,075	11,879	838	26,921	
2012	Q1	3,106	229	3,004	167	6,506	
	Q2	3,046	222	2,885	167	6,319	
	Q3	3,206	238	2,888	169	6,501	
	Q4	3,238	259	2,939	159	6,596	
	Total	12,596	948	11,716	662	25,922	
2013	Q1	3,339	250	2,986	148	6,723	
	Q2	3,426	222	3,017	155	6,819	

Table 2.3: Average Prices Paid by UK Packers to Producers (a)

pence per dozen

Period		Intensive	Barn	Free Range	Organic	All Eggs	% change on previous year
2011	Q1	53.5	73.4	83.0	130.4	69.7	-6.9%
	Q2	52.2	72.4	82.2	129.4	69.1	-0.8%
	Q3	54.0	72.8	83.2	128.4	69.7	4.9%
	Q4	56.1	72.0	84.0	138.3	71.4	2.6%
	Total	53.9	72.6	83.1	131.6	70.0	-0.2%
2012	Q1	65.3	c	89.8	c	79.1	13.5%
	Q2	74.4	c	99.7	c	88.4	28.0%
	Q3	73.4	c	99.4	c	87.4	25.4%
	Q4	75.8	c	101.7	c	89.7	25.7%
	Total	72.2	c	97.7	c	86.2	23.2%
2013	Q1	77.5	c	105.6	c	92.2	16.6%
	Q2	75.4	c	105.5	c	91.0	2.9%

'c' confidential

(a) From 2012 the price is an average across the survey period rather than an end of period weekly spot price and weighted according to the volumes packed by each packing station. Bonus payments paid are included.

Section 2 (b): UK egg processing statistics**Table 2.4: Number of Eggs Bought by UK Egg Processors**

Period		Thousand cases	Tonnes	% change year on year
2011	Q1	1,276	28,076	7.7%
	Q2	1,341	29,497	0.2%
	Q3	1,354	29,797	10.0%
	Q4	1,280	28,170	-3.3%
	Total	5,252	115,540	3.4%
2012	Q1	1,178	25,926	-7.7%
	Q2	1,223	26,900	-8.8%
	Q3	1,228	27,017	-9.3%
	Q4	1,141	25,095	-10.9%
	Total	4,770	104,938	-9.2%
2013	Q1	1,128	24,826	-4.2%
	Q2	1,074	23,628	-12.2%

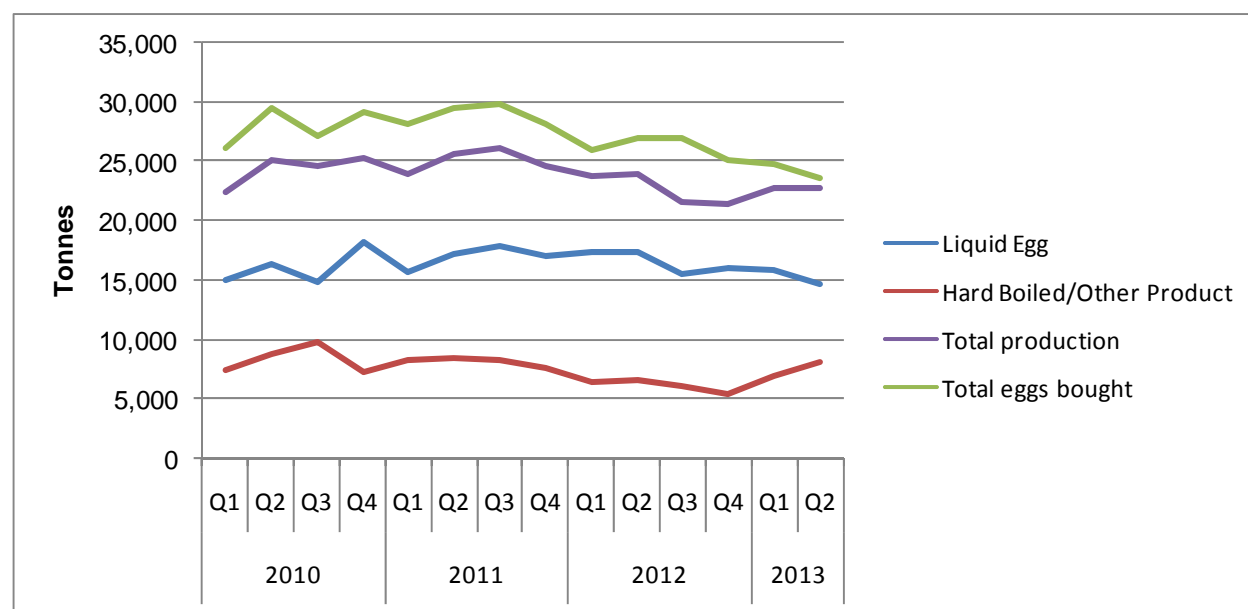
Table 2.5: Production of Egg Products by UK Egg Processors

tonnes

Period		Liquid Egg	Egg Products		Total	% change year on year
			Hard Boiled (a)	Other Products (a)		
2011	Q1	15,690	8,300		23,990	7.1%
	Q2	17,190	8,471		25,661	1.6%
	Q3	17,943	8,231		26,174	6.4%
	Q4	17,085	7,516		24,601	-3.2%
	Total	67,908	32,518		100,426	2.8%
2012	Q1	17,447	6,393		23,840	-0.6%
	Q2	17,361	6,641		24,001	-6.5%
	Q3	15,485	6,060		21,545	-17.7%
	Q4	16,045	5,409		21,454	-12.8%
	Total	66,338	24,503		90,841	-9.5%
2013	Q1	15,832	6,962		22,794	-4.4%
	Q2	14,702	8,140		22,842	-4.8%

(a) Separate data for Hard Boiled Eggs and Other Products currently unavailable.

Chart 2.7: Intake and Production of Egg Products by UK Egg Processors



Section 3: UK Egg Trade

Trade figures are supplied by HM Revenue and Customs. Trade data marked as provisional may be subject to revision.

Table 3.1: UK Trade in Shell Eggs (a)

Calendar Months	Imports			12 Month Moving Totals	Exports			12 Month Moving Totals
			% change				% change	
	2012	2013	12/13		2012	2013	12/13	
January	100	153	54%	2,347	15	29	95%	292
February	107	128	19%	2,367	15	25	65%	301
March	170	166	-2%	2,363	17	20	20%	305
April	237	126	-47%	2,253	14	22	54%	312
May	254	111	-56%	2,110	16	26	61%	322
June	218				25			
July	228				22			
August	179				32			
September	197				29			
October	212				30			
November	194				31			
December	197				31			
Total	2,293	685			277	121		

(a) From 2012 comm codes changed from 04070030 to 040721000, 040729100 and 040790100, All trade data are provisional

Table 3.2: UK Trade in Egg Products (a)

Calendar Months	Imports			12 Month Moving Totals	Exports			12 Month Moving Totals
			% change				% change	
	2012	2013	12/13		2012	2013	12/13	
January	246	252	3%	3,170	8	50	513%	436
February	222	279	26%	3,227	13	105	698%	528
March	265	250	-6%	3,213	12	86	625%	602
April	233	249	7%	3,230	8	75	882%	669
May	255	307	20%	3,281	8	96	1134%	757
June	250				10			
July	306				68			
August	309				64			
September	229				68			
October	313				50			
November	284				67			
December	252				18			
Total	3,164	1,338			394	412		

(a) Figures are based on SITCs: 025.21, 025.22 and 025.30, converted to shell egg equivalent All trade data are provisional

Section 4: Methodology, Notes and Revisions Policy

1. The information in this notice is used by the UK government and the EU as evidence for assessing market conditions and evaluating agricultural policy. Other users include the food and farming industry, academia and the general public. Contact details are available on the front page of this notice, for you to send feedback or ask questions about the information provided.
2. Egg Packing Statistics: Defra runs a quarterly survey of registered UK egg packing stations. It is a voluntary sample survey of 27 respondents that collects information on throughput by production type and prices of graded eggs and sales of ungraded eggs. The response rate is typically 100 per cent and the survey accounts for 75 per cent of eggs packed in the UK. The survey figures are raised up to give UK estimates using information on the number of commercial laying hens, average egg yields, average mortality rates, the proportion of UK eggs that go through packing stations. Throughput by egg type for packing stations not surveyed is calculated using data provided by packing stations responding to the survey. The raised figures are published in this statistics notice and the associated datasets. The figures in this notice therefore represent all Class A eggs passed over a grader in the UK, including seconds. The prices obtained on the survey are weighted according to the volume of eggs packed by each packing station to obtained average prices for the UK. From 2012, prices include any bonus payments paid to producers.
3. Egg processing statistics: Defra runs a quarterly survey of all registered egg processors. It is a voluntary survey of 11 respondents that collects information on the number of eggs bought by egg processors and the quantity of egg products produced. The response rate is typically 100 per cent.
4. In tables that show numbers of eggs the units used are 'thousand cases'. There are 360 eggs in one case.
5. Trade statistics: These figures come from HM Revenue and Customs, but are validated and adjusted if necessary prior to publication. The Standard Industrial Trade Classification codes used to produce each table are given in the footnotes below the tables.
6. The data are subject to a variety of validation checks which identify inconsistencies in the data. All data are cleaned prior to publication.
7. The percentage changes shown are calculated using unrounded figures. Thus any percentage changes calculated using the published (rounded) figures may not equate exactly with the changes shown.
8. The UK 12 month moving totals represent the sum of the 12 months up to and including the date indicated. They can be seen as a trend measure that is not affected by seasonality.

Revisions policy:

9. Figures in this notice are provisional and subject to revision. We will provide information about any revisions we make to previously published information in this statistics notice, and the associated datasets. Revisions could occur for various reasons, including:
 - a. if we have not received survey data from respondents we make an estimate based on their previous returns. These estimates will be replaced with actual survey data when it is received.
 - b. survey respondents occasionally supply amended figures for previous periods.
 - c. we may also revise the methodology used to raise the survey data to give UK totals.
10. **This quarter there are minor revisions to previously published data from Q1 2013 due to revised survey data, and minor revisions to previously published trade data from December 2012 due to revised HMRC data.**