

UK SLAUGHTER STATISTICS

The latest National Statistics produced by Defra on UK slaughterings of cattle, sheep and pigs were released on 22 March 2012 according to the arrangements approved by the UK Statistics Authority.

This monthly notice will be updated at 09:30 on 19 April 2012.

Contents

Section 1	UK slaughter numbers	page 2
Section 2	UK average dressed carcass weights	page 2
Section 3	UK home-killed meat production	page 3
Section 4	UK average weekly slaughter estimates	page 3 to 4
Section 5	UK slaughterings by country	page 5
Section 6	Methodology, notes and revisions policy	page 6

Key points

This release shows the latest monthly information on the slaughtering of cattle, sheep and pigs. It also includes dressed carcass weight and meat production information. The key results for **February 2012** are given below:

- **Cattle:** UK prime cattle slaughterings were 6 per cent lower than in February 2011 at 159 thousand head. Beef and veal production was 70 thousand tonnes, 6 per cent lower than in February 2011.
- **Sheep:** UK clean sheep slaughterings were 5 per cent lower than in February 2011 at 788 thousand head. Mutton and lamb production was 19 thousand tonnes, 4 per cent lower than in February 2011.
- **Pigs:** UK clean pig slaughterings were 1 per cent higher than in February 2011 at 767 thousand head. Pigmear production was 64 thousand tonnes, which was the same as in February 2011.

This notice and additional tables providing longer term trends of slaughterings, meat production and supplies are available to download at: <http://www.defra.gov.uk/statistics/foodfarm/food/slaughter/>

Enquiries to: Sarah Thompson, Department for Environment, Food and Rural Affairs, Room 309, Foss House, Kings Pool, 1 - 2 Peasholme Green, York YO1 7PX. Tel: ++ 44 (0)1904 455097, email:sarah.thompson@defra.gsi.gov.uk

A National Statistics publication. National Statistics are produced to high professional standards. They undergo regular quality assurance reviews to ensure that they meet customer needs. They are produced free from any political interference. For general enquiries about National Statistics, contact the National Statistics Public Enquiry Service: tel. 0845 601 3034 email info@statistics.gov.uk. You can also find National Statistics on the internet at www.statistics.gov.uk.

Section 1: UK monthly slaughter estimates

This table shows monthly estimates of the number of cattle, sheep and pigs slaughtered for meat for human consumption in the United Kingdom. The survey is run according to statistical, rather than calendar months, the number of weeks in the statistical month is specified below.

Table 1: UK monthly slaughter estimates

Thousand Head

United Kingdom	December 2011 4 weeks	January 2012 5 weeks	February 2012 4 weeks
Steers	69	89	78
Heifers	57	75	62
Young Bulls	17	22	19
Cows and Adult Bulls	46	60	45
Calves	5	6	6
Other Sheep and Lambs	1007	977	788
Ewes and Rams	158	170	138
Clean Pigs	743	939	767
Sows and Boars	*	26	19

* Data are confidential

Section 2: UK average dressed carcass weights

This table shows the monthly average dressed carcass weight of livestock slaughtered for meat for human consumption in the United Kingdom.

Table 2: UK average dressed carcass weights

Kilogramme

United Kingdom	December 2011	January 2012	February 2012
Steers	365.4	368.4	369.6
Heifers	320.7	325.0	325.2
Young Bulls	348.4	348.4	347.8
Cows and Adult Bulls	311.6	318.6	319.0
Calves	50.5	49.5	46.1
Other Sheep and Lambs	18.7	19.6	19.8
Ewes and Rams	24.7	25.5	25.8
Clean Pigs	78.0	79.1	79.3
Sows and Boars	151.3	148.7	149.6

Section 3: UK monthly home-killed production of meat

This table shows the monthly volumes of meat produced in the United Kingdom. Data is shown according to statistical, rather than calendar months, number of weeks in statistical month as specified.

Table 3: UK monthly home-killed production of meat

Thousand Tonnes

United Kingdom	December 2011	January 2012	February 2012
	4 weeks	5 weeks	4 weeks
Beef	64	84	70
Mutton and Lamb	23	23	19
Pigmeat	61	78	64

Section 4: UK average weekly slaughterings

This following table shows the average weekly slaughter figures for the last thirteen months. The monthly slaughter figures in section one are affected by the number of weeks in the statistical month. To get a clearer measure of trends weekly averages are calculated by dividing the number of livestock slaughtered each month by the number of weeks in the statistical month.

Longer term trends can be seen in the charts following this table.

Table 4: UK average weekly slaughterings

Thousand Head

United Kingdom	2011											2012	
	Feb	Mar	Apr	May	Jun	Jul	Aug	Sep	Oct	Nov	Dec	Jan	Feb
Steers	20	21	20	20	18	17	19	22	21	20	17	18	19
Heifers	17	16	15	15	14	13	14	15	15	16	14	15	16
Young Bulls	6	6	6	7	8	7	6	6	5	5	4	4	5
Cows and Adult Bulls	12	11	10	12	12	11	12	13	15	16	11	12	11
Calves	2	2	2	1	1	1	1	2	2	2	1	1	2
Other Sheep and Lambs	207	201	192	180	211	260	279	291	312	284	252	195	197
Ewes and Rams	40	35	34	34	35	39	40	40	45	43	39	34	34
Clean Pigs	191	189	177	178	185	187	190	199	199	207	186	188	192
Sows and Boars	*	*	*	*	*	*	*	*	*	*	*	5	5

* Data are confidential

Chart 4:1 United Kingdom average weekly slaughtering – Cattle

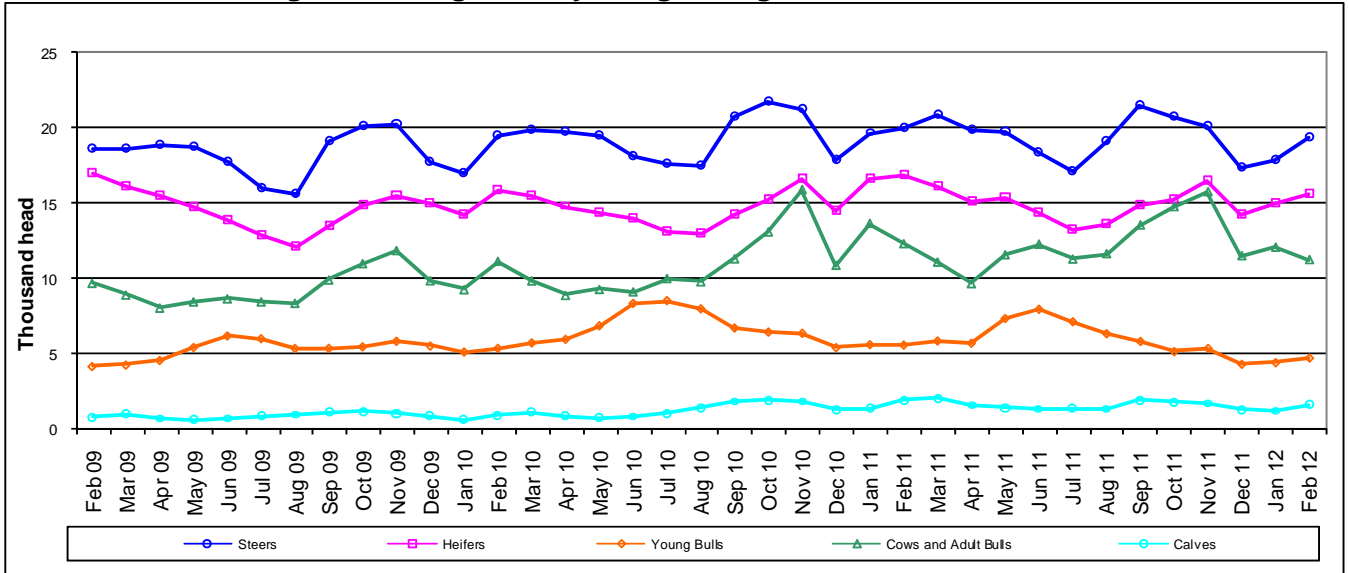


Chart 4:2 United Kingdom average weekly slaughtering – Sheep

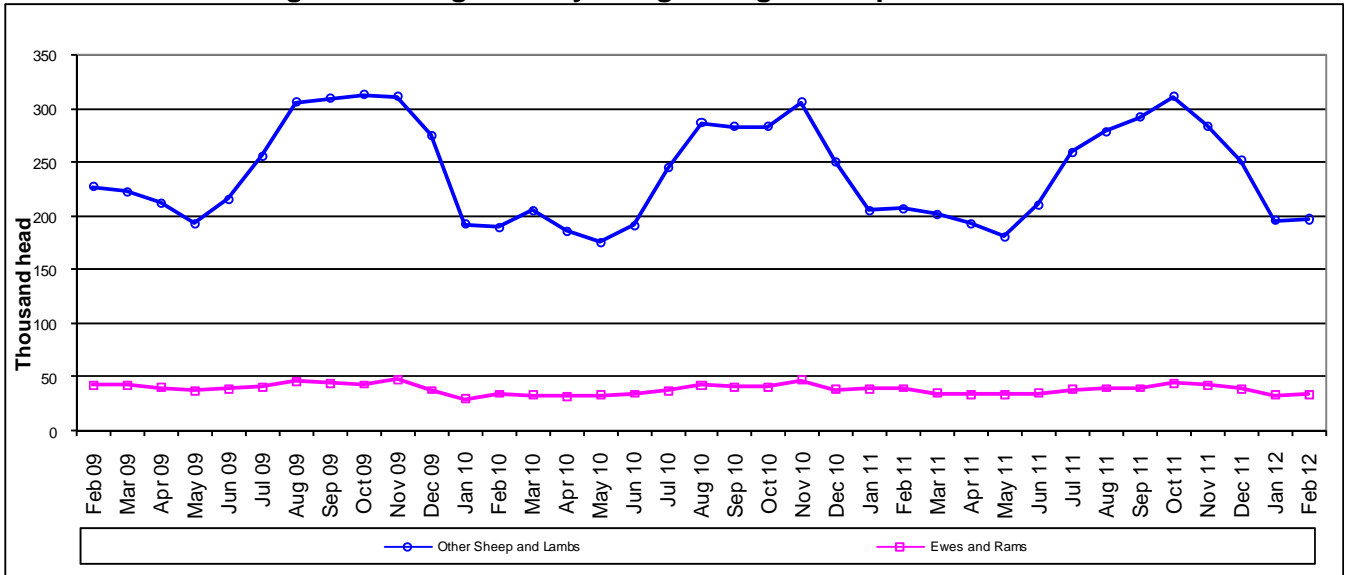
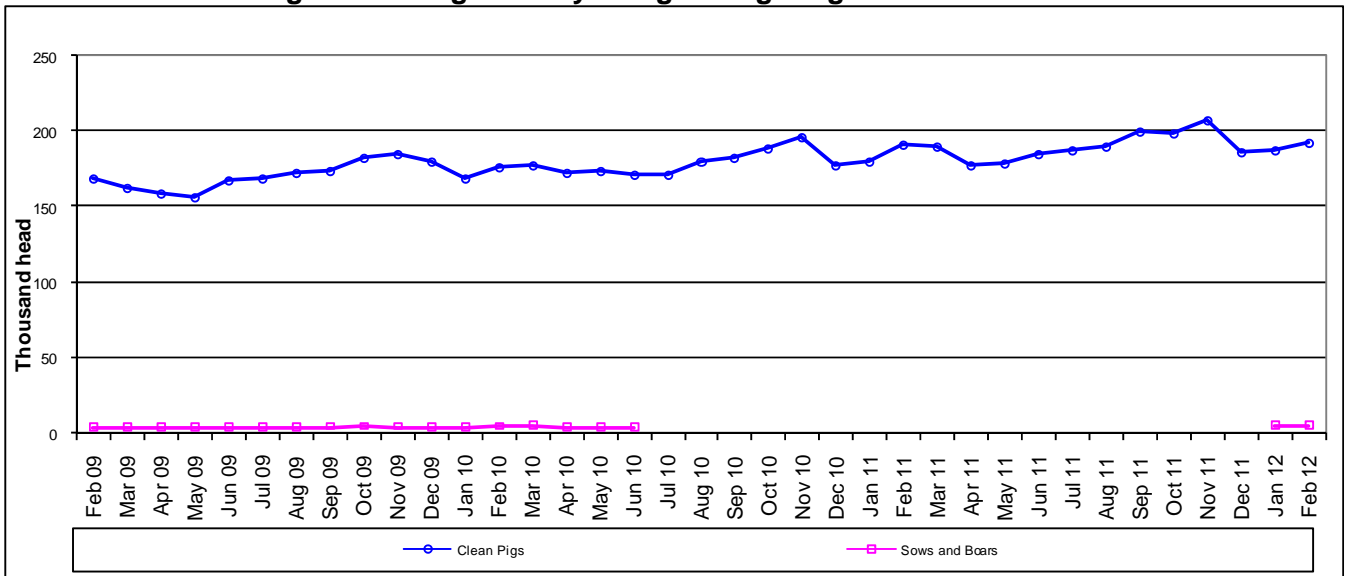


Chart 4:3 United Kingdom average weekly slaughtering - Pigs



Section 5: UK slaughterings by country

This table shows monthly estimates of the number of cattle, sheep and pigs slaughtered for meat in England and Wales, Scotland, Great Britain and Northern Ireland. Data are shown in statistical months, rather than calendar months. The totals for the countries may not add up to the Great Britain totals or the United Kingdom totals in section one, due to rounding.

Table 5: UK slaughterings by country

Thousand Head

	December 2011	January 2012	February 2012
	4 weeks	5 weeks	4 weeks
England & Wales			
Steers	42	55	48
Heifers	32	45	37
Young Bulls	12	15	12
Cows and Adult Bulls	34	46	34
Calves	5	5	6
Other Sheep and Lambs	864	825	661
Ewes and Rams	153	165	134
Clean Pigs	574	720	591
Sows and Boars	*	25	19
Scotland			
Steers	16	20	18
Heifers	16	18	15
Young Bulls	2	2	2
Cows and Adult Bulls	5	6	4
Calves	0	0	0
Other Sheep and Lambs	120	129	110
Ewes and Rams	3	2	1
Clean Pigs	56	64	52
Sows and Boars	0	0	0
Great Britain			
Steers	58	75	66
Heifers	47	63	52
Young Bulls	13	17	14
Cows and Adult Bulls	38	51	38
Calves	5	5	6
Other Sheep and Lambs	983	953	770
Ewes and Rams	155	167	135
Clean Pigs	629	784	643
Sows and Boars	*	26	19
Northern Ireland			
Steers	11	15	12
Heifers	9	12	10
Young Bulls	4	5	4
Cows and Adult Bulls	8	9	7
Calves	0	0	0
Other Sheep and Lambs	24	23	18
Ewes and Rams	2	3	3
Clean Pigs	113	155	124
Sows and Boars	0	0	0

* Data are confidential

Section 6: Methodology, Notes and Revisions Policy

1. The information in this notice is used by the UK government and the EU as evidence for assessing market conditions and evaluating agricultural policy. The slaughter statistics are also required by the EU under Regulation (EC) No 1165/2008. Other users include the food and farming industry, academia and the general public. Contact details are available on the front page of this notice, for you to send feedback or ask questions about the information provided.
2. Defra runs a monthly survey of registered England and Wales slaughterhouses. It is a statutory survey of 109 respondents that collects information on livestock slaughter numbers and weight of meat produced. All major slaughterhouses participate in the survey and the response rate is typically 100%. These data are supplemented by administrative data for smaller slaughterhouses. Similar surveys are run by RERAD in Scotland and by DARD in Northern Ireland. The England and Wales slaughter survey accounts for around 90% of the E&W slaughterhouse throughput for each livestock type.
3. Information on the weight of meat produced from a sample of animals weighed at slaughterhouses is obtained from survey respondents, around 55 slaughterhouse respondents. From the information provided average dressed carcass weights for each animal type are primarily calculated by adding up the total weight of the meat produced and dividing by the number of animals weighed. Cold dressed carcass weights are recorded.
4. The volume of meat production is estimated from the number of all livestock slaughtered and average dressed carcass weight information collected. Home killed production includes livestock imported into the United Kingdom for slaughter.
5. The data are subject to a variety of validation checks which identify inconsistencies in the data. All data are cleaned prior to publication in discussion with the survey respondents.

Revisions Policy

6. Figures in this notice are provisional and subject to revision. We will provide information about any revisions we make to previously published information in this statistics notice and the associated datasets. Revisions could occur for various reasons, including:
 - a. if we have not received survey data from respondents we make an estimate based on their previous returns. These estimates will be replaced with actual survey data when it is received.
 - b. survey respondents occasionally supply amended figures for previous periods.
 - c. if we have not received administrative data for the smaller slaughterhouses we make an estimate based on previous data received. These estimates will be replaced with actual data when it is received.
7. **This month revisions have been made to the data from January 2012 onwards.**