



# Milk Production

ISSN: 1949-1557

Released December 19, 2012, by the National Agricultural Statistics Service (NASS), Agricultural Statistics Board, United States Department of Agriculture (USDA).

## November Milk Production up 1.1 Percent

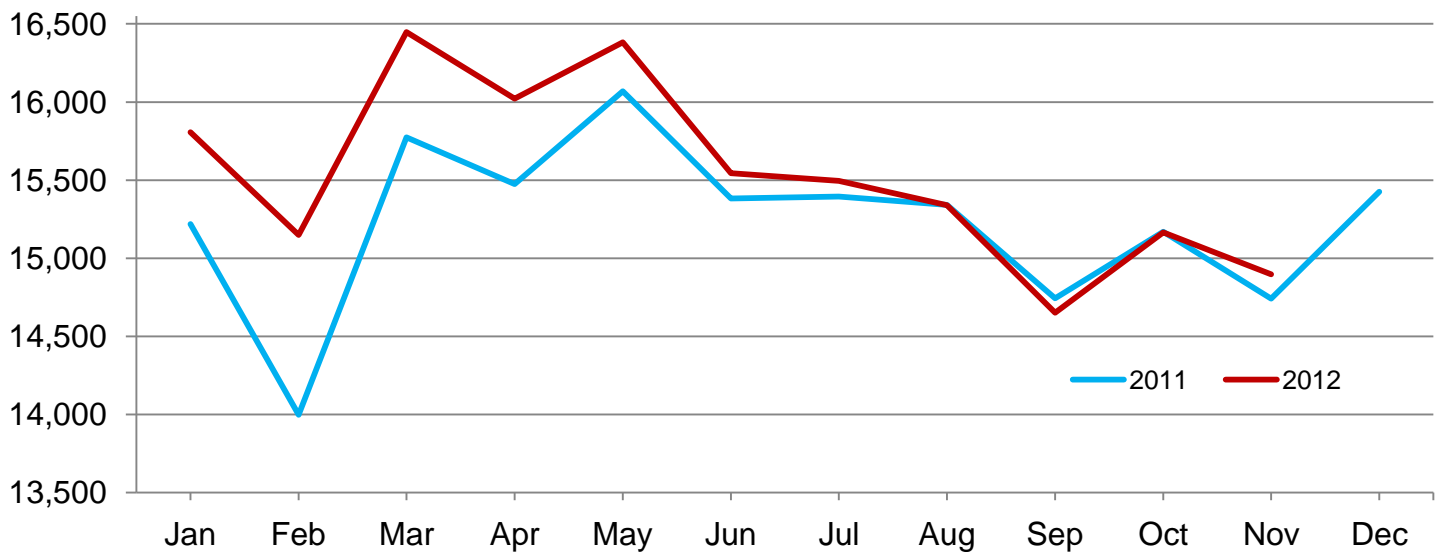
**Milk production** in the 23 major States during November totaled 14.9 billion pounds, up 1.1 percent from November 2011. October revised production at 15.2 billion pounds, was down slightly from October 2011. The October revision represented an increase of 1 million pounds or less than 0.1 percent from last month's preliminary production estimate.

**Production per cow** in the 23 major States averaged 1,758 pounds for November, 19 pounds above November 2011.

**The number of milk cows** on farms in the 23 major States was 8.47 million head, 3,000 head less than November 2011, but 8,000 head more than October 2012.

## Monthly Milk Production – 23 Selected States

Million pounds



## Milk Cows and Production by Quarter – United States: 2011-2012

[Totals may not add due to rounding]

Quarter	Milk cows <sup>1</sup>		Milk per cow <sup>2</sup>		Milk production <sup>2</sup>		
	2011	2012	2011	2012	2011	2012	Change from 2011
	(1,000 head)	(1,000 head)	(pounds)	(pounds)	(million pounds)	(million pounds)	(percent)
January-March .....	9,168	9,254	5,286	5,513	48,459	51,017	5.3
April-June .....	9,191	9,257	5,489	5,562	50,448	51,484	2.1
July-September .....	9,200	9,215	5,292	5,285	48,684	48,705	-
October-December .....	9,216		5,279		48,654		
Annual .....	9,194		21,345		196,245		

- Represents zero.

<sup>1</sup> Includes dry cows; excludes heifers not yet fresh.

<sup>2</sup> Excludes milk sucked by calves.

## Milk Cows and Production by Month – 23 Selected States: 2011-2012

Month	Milk cows <sup>1</sup>		Milk per cow <sup>2</sup>		Milk production <sup>2</sup>		
	2011	2012	2011	2012	2011	2012	Change from 2011
	(1,000 head)	(1,000 head)	(pounds)	(pounds)	(million pounds)	(million pounds)	(percent)
January .....	8,405	8,502	1,811	1,859	15,219	15,806	3.9
February .....	8,408	8,510	1,665	1,780	13,997	15,149	8.2
March .....	8,425	8,521	1,872	1,930	15,773	16,447	4.3
April .....	8,431	8,527	1,835	1,879	15,475	16,021	3.5
May .....	8,447	8,521	1,902	1,923	16,069	16,382	1.9
June .....	8,450	8,507	1,820	1,827	15,382	15,545	1.1
July .....	8,459	8,499	1,820	1,823	15,395	15,496	0.7
August .....	8,463	8,496	1,813	1,805	15,342	15,339	-
September .....	8,466	8,473	1,742	1,729	14,744	14,651	-0.6
October .....	8,475	8,464	1,790	1,792	15,170	15,166	-
November .....	8,475	8,472	1,739	1,758	14,742	14,898	1.1
December .....	8,485		1,818		15,426		
Annual .....	8,449		21,627		182,734		

- Represents zero.

<sup>1</sup> Includes dry cows; excludes heifers not yet fresh.

<sup>2</sup> Excludes milk sucked by calves.

## Estimated Milk Cows and Production by Month – United States: 2011-2012

Month	Milk cows <sup>1</sup>		Milk per cow <sup>2</sup>		Milk production <sup>2</sup>		
	2011	2012	2011	2012	2011	2012	Change from 2011
	(1,000 head)	(1,000 head)	(pounds)	(pounds)	(million pounds)	(million pounds)	(percent)
January .....	9,160	9,242	1,790	1,841	16,393	17,011	3.8
February .....	9,163	9,254	1,645	1,762	15,077	16,305	8.1
March .....	9,180	9,267	1,851	1,910	16,989	17,701	4.2
April .....	9,182	9,271	1,814	1,857	16,652	17,220	3.4
May .....	9,194	9,260	1,879	1,900	17,278	17,592	1.8
June .....	9,196	9,239	1,796	1,805	16,518	16,672	0.9
July .....	9,198	9,228	1,792	1,798	16,479	16,592	0.7
August .....	9,200	9,222	1,785	1,781	16,422	16,424	-
September .....	9,201	9,196	1,715	1,706	15,783	15,689	-0.6
October .....	9,212	9,186	1,767	1,770	16,278	16,260	-0.1
November .....	9,213	9,193	1,717	1,738	15,820	15,973	1.0
December .....	9,223		1,795		16,556		
Annual .....	9,194		21,345		196,245		

- Represents zero.

<sup>1</sup> Includes dry cows; excludes heifers not yet fresh.

<sup>2</sup> Excludes milk sucked by calves.

## Milk Cows and Production – 23 Selected States: November 2011 and 2012

State	Milk cows <sup>1</sup>		Milk per cow <sup>2</sup>		Milk production <sup>2</sup>		
	2011	2012	2011	2012	2011	2012	Change from 2011
	(1,000 head)	(1,000 head)	(pounds)	(pounds)	(million pounds)	(million pounds)	(percent)
Arizona .....	192	180	1,855	1,940	356	349	-2.0
California .....	1,778	1,780	1,880	1,835	3,343	3,266	-2.3
Colorado .....	131	135	1,870	1,935	245	261	6.5
Florida .....	120	122	1,460	1,400	175	171	-2.3
Idaho .....	579	579	1,840	1,880	1,065	1,089	2.3
Illinois .....	98	100	1,580	1,580	155	158	1.9
Indiana .....	173	173	1,670	1,730	289	299	3.5
Iowa .....	200	205	1,765	1,790	353	367	4.0
Kansas .....	123	127	1,725	1,770	212	225	6.1
Michigan .....	369	375	1,865	1,915	688	718	4.4
Minnesota .....	465	465	1,520	1,590	707	739	4.5
Missouri .....	94	93	1,190	1,180	112	110	-1.8
New Mexico .....	333	323	2,020	2,000	673	646	-4.0
New York .....	610	610	1,680	1,735	1,025	1,058	3.2
Ohio .....	269	270	1,560	1,625	420	439	4.5
Oregon .....	122	123	1,615	1,610	197	198	0.5
Pennsylvania .....	538	533	1,580	1,600	850	853	0.4
Texas .....	435	430	1,815	1,770	790	761	-3.7
Utah .....	88	89	1,740	1,750	153	156	2.0
Vermont .....	134	133	1,510	1,555	202	207	2.5
Virginia .....	96	95	1,440	1,455	138	138	-
Washington .....	263	261	1,880	1,880	494	491	-0.6
Wisconsin .....	1,265	1,271	1,660	1,730	2,100	2,199	4.7
23-State Total .....	8,475	8,472	1,739	1,758	14,742	14,898	1.1

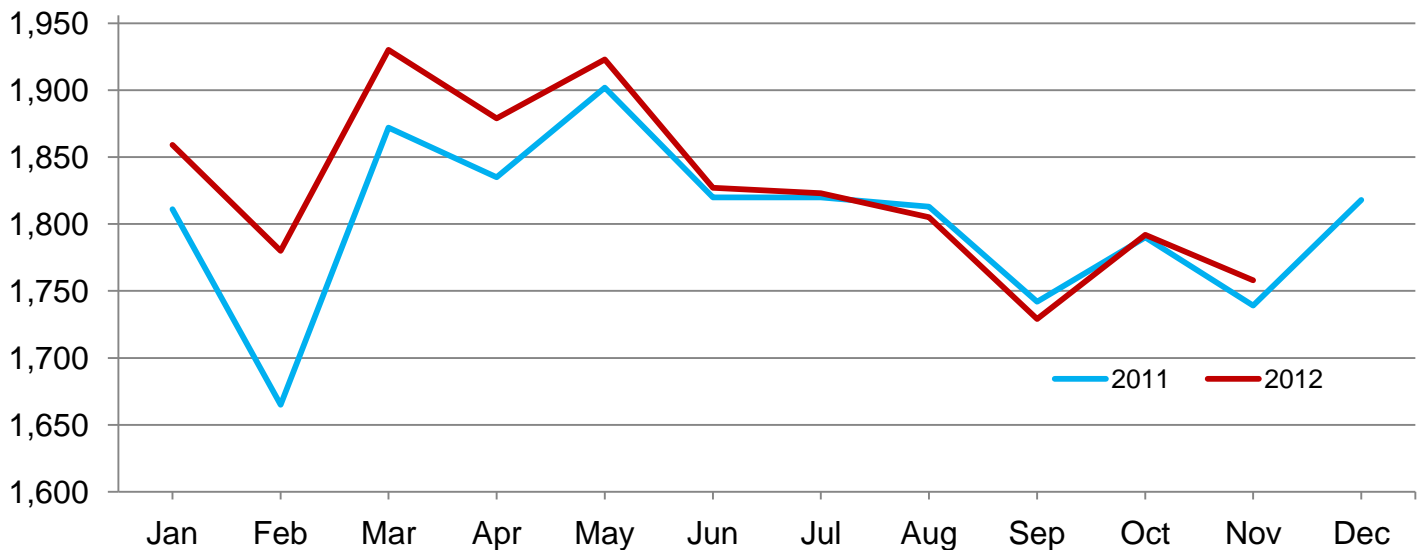
- Represents zero.

<sup>1</sup> Includes dry cows; excludes heifers not yet fresh.

<sup>2</sup> Excludes milk sucked by calves.

## Monthly Milk per Cow – 23 Selected States

Pounds



## Milk Cows and Production – 23 Selected States: October 2011 and 2012

State	Milk cows <sup>1</sup>		Milk per cow <sup>2</sup>		Milk production <sup>2</sup>		Change from 2011
	2011	2012	2011	2012	2011	2012	
	(1,000 head)	(1,000 head)	(pounds)	(pounds)	(million pounds)	(million pounds)	(percent)
Arizona .....	192	180	1,865	1,900	358	342	-4.5
California .....	1,776	1,778	1,930	1,860	3,428	3,307	-3.5
Colorado .....	131	135	1,955	2,005	256	271	5.9
Florida .....	120	122	1,350	1,310	162	160	-1.2
Idaho .....	581	577	1,930	1,970	1,121	1,137	1.4
Illinois .....	98	100	1,600	1,580	157	158	0.6
Indiana .....	173	173	1,720	1,750	298	303	1.7
Iowa .....	199	203	1,805	1,795	359	364	1.4
Kansas .....	123	126	1,765	1,810	217	228	5.1
Michigan .....	369	374	1,925	1,950	710	729	2.7
Minnesota .....	466	465	1,555	1,605	725	746	2.9
Missouri .....	95	93	1,180	1,180	112	110	-1.8
New Mexico .....	332	324	2,100	2,025	697	656	-5.9
New York .....	610	610	1,725	1,775	1,052	1,083	2.9
Ohio .....	268	270	1,600	1,650	429	446	4.0
Oregon .....	122	123	1,705	1,685	208	207	-0.5
Pennsylvania .....	538	533	1,620	1,630	872	869	-0.3
Texas .....	435	430	1,870	1,795	813	772	-5.0
Utah .....	87	88	1,800	1,810	157	159	1.3
Vermont .....	134	133	1,560	1,595	209	212	1.4
Virginia .....	96	95	1,450	1,465	139	139	-
Washington .....	266	261	1,965	1,960	523	512	-2.1
Wisconsin .....	1,264	1,271	1,715	1,775	2,168	2,256	4.1
23-State Total .....	8,475	8,464	1,790	1,792	15,170	15,166	-

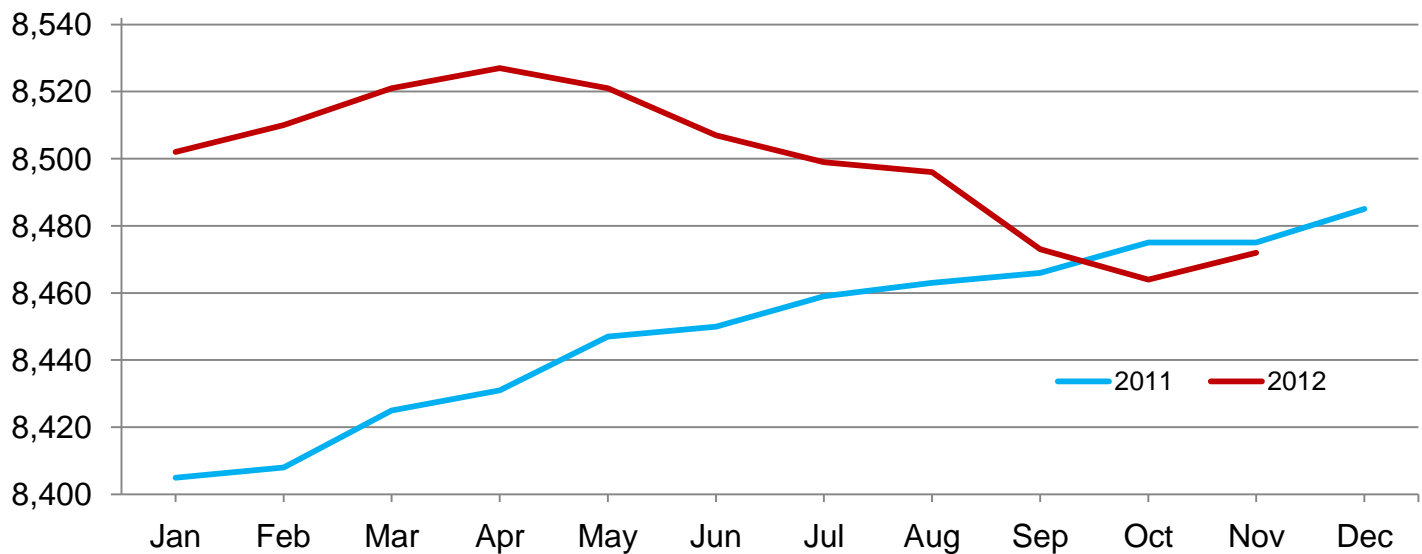
- Represents zero.

<sup>1</sup> Includes dry cows; excludes heifers not yet fresh.

<sup>2</sup> Excludes milk sucked by calves.

## Monthly Milk Cows – 23 Selected States

Thousand head



## Statistical Methodology

**Survey Procedures:** Primary data used to determine these estimates were obtained from a sample of producers. Individual States maintain a list of all known milk producers and information on the size of their herd. States use all known sources of producers to ensure that their lists are as complete as possible. Generally, all large producers and a sample of small producers are included in the survey. Questionnaires are mailed to producers near the end of the month to obtain data for the first day of the month. Additional reports are obtained by telephone, as needed, to supplement the mail response. Where feasible, States utilize state and federal administrative data to estimate milk production. This eliminates duplication of data gathering by different government agencies. Indications of milk cow inventory are also obtained in the January and July Cattle Surveys.

**Estimation Procedures:** State offices prepare these estimates by using a combination of survey indications, historic trends, and any available administrative data. Individual State estimates are reviewed by the Agricultural Statistics Board for reasonableness.

**Revision Policy:** Milk production, rate per cow, and number of cows are subject to revision the following month for monthly States or the following quarter for the quarterly States. Normally, Federal Market Order sales are the main basis for revisions. However, data for all orders are not available in time for this revision. Estimates are again subject to revisions in February each year based on additional administrative data. In the event that additional changes are necessary, a third revision is possible in February the following year. Estimates are again reviewed after data from the five-year Census of Agriculture are available. No revisions are made after that date.

**Reliability:** Since all operations with dairy animals are not included in the sample, survey estimates are subject to sampling variability. Survey results are also subject to non-sampling errors such as omissions, duplications, and mistakes in reporting, recording, and processing the data. The effects of these errors cannot be measured directly. They are minimized through rigid quality controls in the data collection process and through a careful review of all reported data for consistency and reasonableness.

To assist users in evaluating the reliability of the estimates in this report, the "Root Mean Square Error" is shown for selected items on the next page. The "Root Mean Square Error" is a statistical measure based on past performance and is computed using the differences between first and final estimates. The "Root Mean Square Error" for the 23 State milk cow inventory estimates over the past 24 months is 0.1 percent. This means that chances are 2 out of 3 that the final estimate will not be above or below the current estimate of 8.47 million head by more than 0.1 percent. Chances are 9 out of 10 that the difference will not exceed 0.1 percent.

## Reliability of Monthly Milk Production Estimates

[Based on data for the past 24 months]

Item	Root mean square error	90 percent confidence level	Difference between first and latest estimate				
			Average	Smallest	Largest	Months	
						Below latest	Above latest
	(percent)	(percent)	(1,000)	(1,000)	(1,000)	(number)	(number)
Milk production .....	0.1	0.2	15	1	50	13	11
All milk cows .....	0.1	0.1	4	0	12	10	12

## Information Contacts

Listed below are the commodity specialists in the Livestock Branch of the National Agricultural Statistics Service to contact for additional information. E-mail inquiries may be sent to [nass@nass.usda.gov](mailto:nass@nass.usda.gov)

Dan Kerestes, Chief, Livestock Branch .....	(202) 720-3570
Scott Hollis, Head, Livestock Section .....	(202) 690-2424
Travis Averill – Cattle, Cattle on Feed .....	(202) 720-3040
Sherry Bertramsen – Livestock Slaughter .....	(515) 284-4340
Doug Bounds – Hogs and Pigs .....	(202) 720-3106
Donnie Fike – Dairy Products .....	(202) 690-3236
Mike Miller – Milk Production and Milk Cows .....	(202) 720-3278
Alissa Cowell-Mytar – Sheep and Goats .....	(202) 720-4751

## Access to NASS Reports

For your convenience, you may access NASS reports and products the following ways:

- All reports are available electronically, at no cost, on the NASS web site: <http://www.nass.usda.gov>
- Both national and state specific reports are available via a free e-mail subscription. To set-up this free subscription, visit <http://www.nass.usda.gov> and in the “Follow NASS” box under “Receive reports by Email,” click on “National” or “State” to select the reports you would like to receive.

For more information on NASS surveys and reports, call the NASS Agricultural Statistics Hotline at (800) 727-9540, 7:30 a.m. to 4:00 p.m. ET, or e-mail: [nass@nass.usda.gov](mailto:nass@nass.usda.gov).

The United States Department of Agriculture (USDA) prohibits discrimination in all its programs and activities on the basis of race, color, national origin, age, disability, and where applicable, sex, marital status, familial status, parental status, religion, sexual orientation, political beliefs, genetic information, reprisal, or because all or a part of an individual's income is derived from any public assistance program. (Not all prohibited bases apply to all programs.) Persons with disabilities who require alternative means for communication of program information (Braille, large print, audiotape, etc.) should contact USDA's TARGET Center at (202) 720-2600 (voice and TDD).

To file a complaint of discrimination, write to USDA, Assistant Secretary for Civil Rights, Office of the Assistant Secretary for Civil Rights, 1400 Independence Avenue, S.W., Stop 9410, Washington, DC 20250-9410, or call toll-free at (866) 632-9992 (English) or (800) 877-8339 (TDD) or (866) 377-8642 (English Federal-relay) or (800) 845-6136 (Spanish Federal-relay). USDA is an equal opportunity provider and employer.