



Agricultural Prices

ISSN: 1937-4216

Released September 29, 2014, by the National Agricultural Statistics Service (NASS), Agricultural Statistics Board, United States Department of Agriculture (USDA).

September Farm Prices Received Index Decreased 3 Points

The preliminary All Farm Products Index of Prices Received by Farmers in September, at 106 percent, based on 2011=100, decreased 3 points (2.8 percent) from August. The Crop Index is down 3 points (3.3 percent) but the Livestock Index was unchanged. Producers received lower prices for hogs, corn, soybeans, and cattle. Higher prices were received for broilers, milk, strawberries, and apples. In addition to prices, the overall index is also affected by the seasonal change based on a 3-year average mix of commodities producers sell. Increased monthly movement of soybeans, corn, potatoes, and calves offset the decreased marketing of cattle, wheat, cotton, and barley.

The preliminary All Farm Products Index is up 3 points (2.9 percent) from September 2013. The Food Commodities Index, at 119, decreased 1 point (0.8 percent) from last month but increased 13 points (12 percent) from September 2013.

Prices Paid Index Unchanged

The September Index of Prices Paid for Commodities and Services, Interest, Taxes, and Farm Wage Rates (PPITW) is at 111 (2011=100). The index is unchanged from August but 4 points (3.7 percent) above September 2013. Higher prices in September for feeder cattle, potash & phosphate, LP gas, and herbicides offset lower prices for complete feeds, feeder pigs, hay & forages, and feed grains.

Prices Received, Prices Paid, and Ratio of Prices Received to Prices Paid Indexes 2011 Base – United States: September 2014 with Comparisons

Index	September	August	September
	2013	2014	2014
Prices received by farmers	103	109	106
Prices paid by farmers	107	111	111
Ratio of prices received to prices paid	96	98	95

Contents

Prices Received by Farmers	4
Prices Received Indexes as a Percent of 2011 Base – United States: September 2014 with Comparisons	5
Prices Received Indexes as a Percent of 1910-1914 Base – United States: September 2014 with Comparisons	5
Prices Received Indexes as a percent of 2011 Base by Month for Selected Groups – United States: 2013 and 2014.....	6
Prices Paid Indexes as a percent of 2011 Base by Month for Selected Groups – United States: 2013 and 2014.....	6
Received Indexes by Month, Livestock Products, All Products, and All Crops – United States: 2011=100 Chart.....	7
Received Indexes by Month, Food Grain, Feed Grain, and Oilseed – United States: 2011=100 Chart.....	7
Received Indexes by Month, Fruit & Nut and Commercial Vegetable – United States: 2011=100 Chart.....	8
Received Indexes by Month, Meat Animal, Dairy Product, and Poultry & Egg – United States: 2011=100 Chart.....	8
Prices Received for Field Crops and Fruits – United States: September 2014 with Comparisons	9
Prices Received for Vegetables and Livestock – United States: September 2014 with Comparisons.....	10
Prices Received for Corn by Month – United States Chart.....	11
Prices Received for Wheat by Month – United States Chart	11
Prices Received for Cotton by Month – United States Chart.....	12
Prices Received for Soybeans by Month – United States Chart	12
Prices Received for Cattle by Month – United States Chart	13
Prices Received for Milk by Month – United States Chart.....	13
Prices Received for Hogs by Month – United States Chart	14
Prices Received for Poultry by Month – United States Chart.....	14
Prices Received for All Wheat, Corn, and Soybeans by Month – United States: 2014 with Comparisons.....	15
Prices Received for Beef Cattle and All Hogs by Month – United States: 2014 with Comparisons	15
Prices Received for All Wheat – States and United States: September 2014 with Comparisons	16
Prices Received for Winter Wheat – States and United States: September 2014 with Comparisons	16
Prices Received for Durum Wheat – States and United States: September 2014 with Comparisons.....	17
Prices Received for Spring Wheat – States and United States: September 2014 with Comparisons.....	17
Prices Received for All Barley – States and United States: September 2014 with Comparisons.....	18
Prices Received for Malting Barley – States: September 2014 with Comparisons.....	18
Prices Received for Feed Barley – States: September 2014 with Comparisons	18
Prices Received for Corn – States and United States: September 2014 with Comparisons.....	19
Prices Received for Soybeans – States and United States: September 2014 with Comparisons	19
Prices Received for Oats – States and United States: September 2014 with Comparisons	20
Prices Received for Sorghum Grain – States and United States: September 2014 with Comparisons.....	20
Prices Received for Dry Beans – States and United States: September 2014 with Comparisons.....	21
Prices Received for Peanuts (in shell) – States and United States: September 2014 with Comparisons.....	21
Prices Received for Sunflower – States and United States: September 2014 with Comparisons	22
Prices Received for Canola – States and United States: September 2014 with Comparisons	22
Prices Received for Flaxseed – States and United States: September 2014 with Comparisons.....	22
Prices Received for Upland Cotton and Cottonseed – States and United States: September 2014 with Comparisons	23
Prices Received and Farm Marketings for Upland Cotton and Rice – California, Other States, and United States: September 2014 with Comparisons	23
Prices Received for Hay by Type – States and United States: September 2014 with Comparisons.....	24
Prices Received for Apples – States and United States: September 2014 with Comparisons	24
Prices Received for Citrus Fruits by Utilization – States and United States: September 2013.....	25
Prices Received for Citrus Fruits by Utilization – States and United States: August 2014	26
Prices Received for Citrus Fruits by Utilization – States and United States: September 2014.....	27
Prices Received for Potatoes – States and United States: September 2014 with Comparisons	28

Prices Received for All Milk – States and United States: September 2014 with Comparisons.....	29
Prices Received for Milk Cows – States and United States: July 2014 with Comparisons	30
Commodity Parity Prices and Price as Percent of Parity Price – United States: September 2014 with Comparisons	31
Commodity Parity Prices – United States: September 2014 with Comparisons.....	32
Marketing Year for Specified Commodities	34
Dry Edible Peas Market Year Average Prices Received – States and United States: Marketing Years 2011 through 2013.....	35
Austrian Winter Peas Market Year Average Prices Received – States and United States: Marketing Years 2011 through 2013.....	35
Lentils Market Year Average Prices Received – States and United States: Marketing Years 2011 through 2013	35
Lentils Prices Received and Farm Marketings by Month – United States: Marketing Years 2011-2012 through 2013-2014	36
Dry Edible Peas Prices Received and Farm Marketings by Month – United States: Marketing Years 2011-2012 through 2013-2014	36
Austrian Winter Peas Prices Received and Farm Marketings by Month – United States: Marketing Years 2011-2012 through 2013-2014	37
Corn Prices Received and Farm Marketings by Month – United States: Marketing Years 2011-2012 through 2013-2014	37
Sorghum Grain Market Year Average Prices Received – States and United States: Marketing Years 2011 through 2013.....	38
Sorghum Grain Farm Marketing Percent by Month – States and United States: Marketing Years 2012-2013 and 2013-2014	38
Sorghum Grain Prices Received by Month – States and United States: Marketing Years 2012-2013 and 2013-2014	39
Soybean Market Year Average Prices Received – States and United States: Marketing Years 2011 through 2013	41
Soybean Prices Received by Month – States and United States: Marketing Years 2012-2013 and 2013-2014.....	42
Soybean Farm Marketing Percent by Month – States and United States: Marketing Years 2012-2013 and 2013-2014	44
Reliability of Prices Received Estimates	45
Prices Paid by Farmers.....	46
Prices Paid Indexes and Related Parity Ratios – United States: September 2014 with Comparisons	47
Prices Paid Indexes and Annual Weights for Input Components and Sub-components – United States: September 2014 with Comparisons.....	48
Paid Indexes by Month, All Items and Production Items – United States: 2011=100 Chart.....	49
Paid Indexes, Annual Averages, Production Items, Interest, Taxes, and Wages – United States: 2011=100 Chart.....	49
Paid Indexes by Farm Type, All Items – United States: 2011=100 Chart	50
Paid Indexes by Origin, All Production Items – United States: 2011=100 Chart.....	50
Paid Indexes by Non-Farm Sector, Supplies & Repairs, Fertilizer, Machinery, and Fuel – United States: 2011=100 Chart.....	51
Paid Indexes by Month, Feed and Livestock & Poultry – United States: 2011=100 Chart.....	51
Feed Price Ratios – United States: September 2014 with Comparisons.....	52
Prices Received Used to Calculate Feed Price Ratios – United States: September 2014 with Comparisons	52
Prices Paid for Feeder Livestock – United States: September 2014 with Comparisons.....	52
Reliability of Prices Paid Estimates	53
Information Contacts	54

Prices Received by Farmers

The September All Farm Products Index is 106 percent of its 2011 base, down 2.8 percent from the August index but 2.9 percent above the September 2013 index.

All crops: The September index, at 87, decreased 3.3 percent from August and is 12 percent below September 2013. Index decreases for oilseeds & grains and vegetable & melon production more than offset the index increases for other crop production and fruit & tree nut production.

Food grains: The September index, at 83, is unchanged from the previous month but 14 percent below a year ago. The September price for all wheat, at \$5.72 per bushel, is down 26 cents from August and \$1.08 below September 2013.

Feed grains: The September index, at 58, is down 7.9 percent from last month and 36 percent below a year ago. The corn price, at \$3.38 per bushel, is down 25 cents from last month and \$2.02 below September 2013. Sorghum grain, at \$6.58 per cwt, is 55 cents below August and \$1.59 below September last year.

Oilseeds: The September index, at 89, is down 8.2 percent from August and 15 percent lower than September 2013. The soybean price, at \$11.20 per bushel, decreased \$1.20 from August and is \$2.10 below September 2013.

Fruits & tree nuts: The September index, at 129, is up 0.8 percent from August and 9.3 percent higher than a year ago. The price increases for strawberries and apples more than offset price decreases for grapes and peaches.

Vegetable & melon: The September index, at 97, is down 2.0 percent from last month but 6.6 percent above September 2013. During September, lower sweet corn prices more than offset higher lettuce prices.

Other crops: The September index, at 101, is up 2.0 percent from last month but 1.0 percent below September 2013. The all hay price, at \$176 per ton, is down \$9.00 from August but up \$2.00 from last September. The price for upland cotton, at 71.6 cents per pound, is up 1.1 cents from August but 3.0 cents below from last September.

Livestock and products: The September index, at 131, is unchanged from last month but up 21 percent from September 2013. Compared with a year ago, prices are higher for cattle, milk, broilers, calves, hogs, turkeys, and market eggs.

Meat animals: The September index, at 133, is down 2.9 percent from last month but 23 percent higher than last year. The September hog price, at \$73.40 per cwt, is down \$9.80 from August but \$2.70 higher than a year ago. The September beef cattle price of \$156 per cwt is down \$2.00 from last month but \$34.00 higher than September 2013.

Dairy products: The September index, at 124, is up 3.3 percent from a month ago and 24 percent higher than September last year. The September all milk price of \$25.00 per cwt is up 90 cents from last month and up \$4.90 from September 2013.

Poultry & eggs: The September index, at 133, is up 5.6 percent from August and 16 percent above a year ago. The September market egg price, at 82.5 cents per dozen, decreased 3.6 cents from August but is 0.2 cents above September 2013. The September broiler price, at 66.0 cents per pound, is up 5.0 cents from August and 11.0 cents above a year ago. The September turkey price, at 77.3 cents per pound, is up 1.7 cents from the previous month and up 9.4 cents from a year earlier.

Prices Received Indexes as a Percent of 2011 Base – United States: September 2014 with Comparisons

[Revised historical price indexes for months not shown are available at www.nass.usda.gov]

Index	2011 Base		
	September 2013	August 2014	September 2014
	(percent)	(percent)	(percent)
Agricultural Production	103	109	106
Crop Production	99	90	87
Grains and oilseed	96	76	72
Feed grain	90	63	58
Food grain	97	83	83
Oilseed	105	97	89
Fruit and tree nut	118	128	129
Vegetable and melon	91	99	97
Other crop	102	99	101
Livestock Production	108	131	131
Meat animal	108	137	133
Cattle	109	141	141
Hog	106	125	110
Dairy	100	120	124
Poultry and egg	115	126	133
Food Commodity	106	120	119

Prices Received Indexes as a Percent of 1910-1914 Base – United States: September 2014 with Comparisons

[Revised historical price indexes for months not shown are available at www.nass.usda.gov]

Index	1910 - 1914 Base		
	September 2013	August 2014	September 2014
	(percent)	(percent)	(percent)
Agricultural Production	1064	1125	1098
Crop Production	867	787	757
Livestock Production	1249	1520	1522

Prices Received Indexes as a percent of 2011 Base by Month for Selected Groups – United States: 2013 and 2014

[Revised historical price indexes for months not shown are available at www.nass.usda.gov. Blank data cells indicate estimation period has not yet begun]

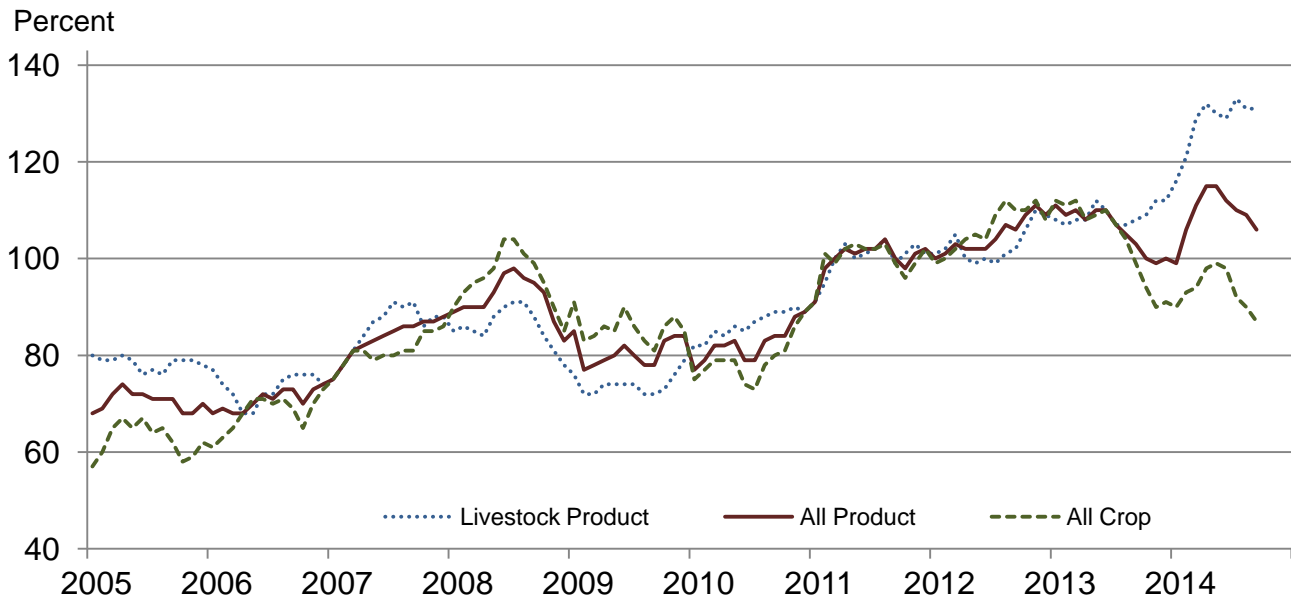
Month	2011 Base							
	Agricultural Production		Crop Production		Livestock Production		Food Commodities	
	2013	2014	2013	2014	2013	2014	2013	2014
	(percent)	(percent)	(percent)	(percent)	(percent)	(percent)	(percent)	(percent)
January	111	99	112	90	108	116	111	111
February	109	106	111	93	107	121	108	117
March	110	111	112	94	108	129	109	122
April	108	115	108	98	108	132	107	125
May	110	115	109	99	112	130	110	125
June	110	112	110	98	110	129	109	122
July	107	110	107	92	107	133	106	120
August	105	109	104	90	107	131	106	120
September	103	106	99	87	108	131	106	119
October	100		94		109		106	
November	99		90		112		109	
December	100		91		112		109	

Prices Paid Indexes as a percent of 2011 Base by Month for Selected Groups – United States: 2013 and 2014

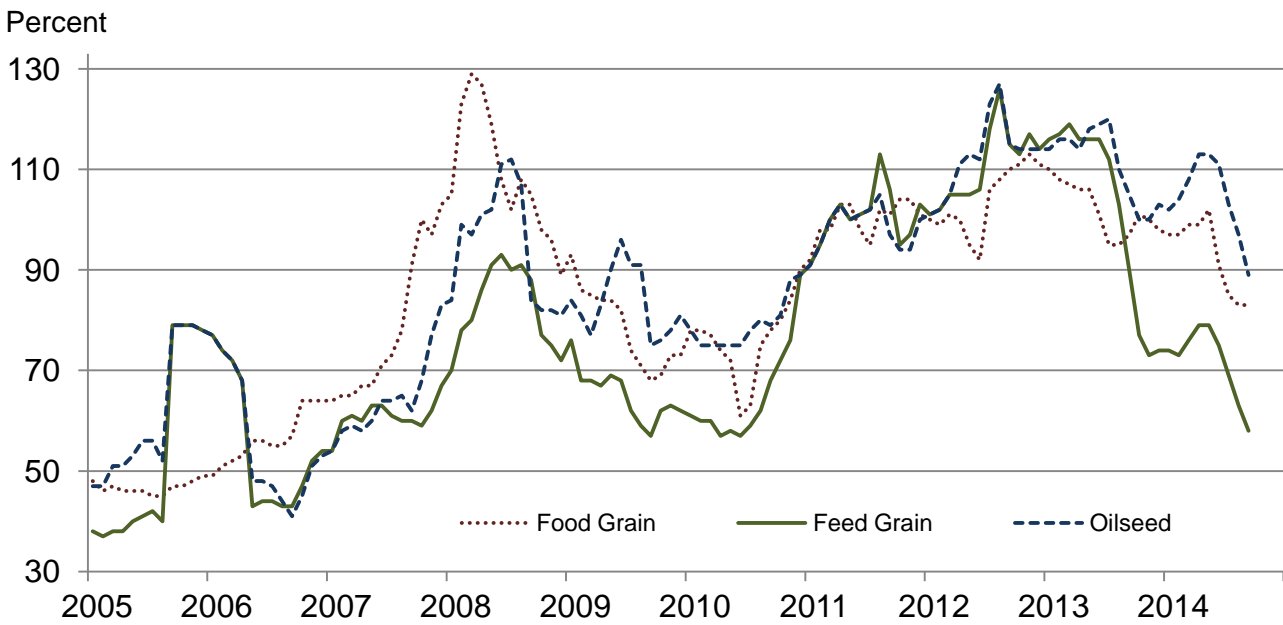
[Revised historical price indexes for months not shown are available at www.nass.usda.gov. Blank data cells indicate estimation period has not yet begun]

Month	2011 Base							
	All Items (PPITW)		Production		Crop Sector		Livestock Sector	
	2013	2014	2013	2014	2013	2014	2013	2014
	(percent)	(percent)	(percent)	(percent)	(percent)	(percent)	(percent)	(percent)
January	106	108	107	109	104	106	108	111
February	106	109	107	110	104	106	108	112
March	106	110	107	112	105	107	108	113
April	106	112	107	114	105	108	107	116
May	106	112	107	115	105	108	108	117
June	106	113	107	115	105	108	108	118
July	107	112	108	115	104	108	110	117
August	106	111	107	113	104	107	108	116
September	107	111	108	113	104	107	109	115
October	106		107		104		108	
November	106		106		104		108	
December	106		107		104		108	

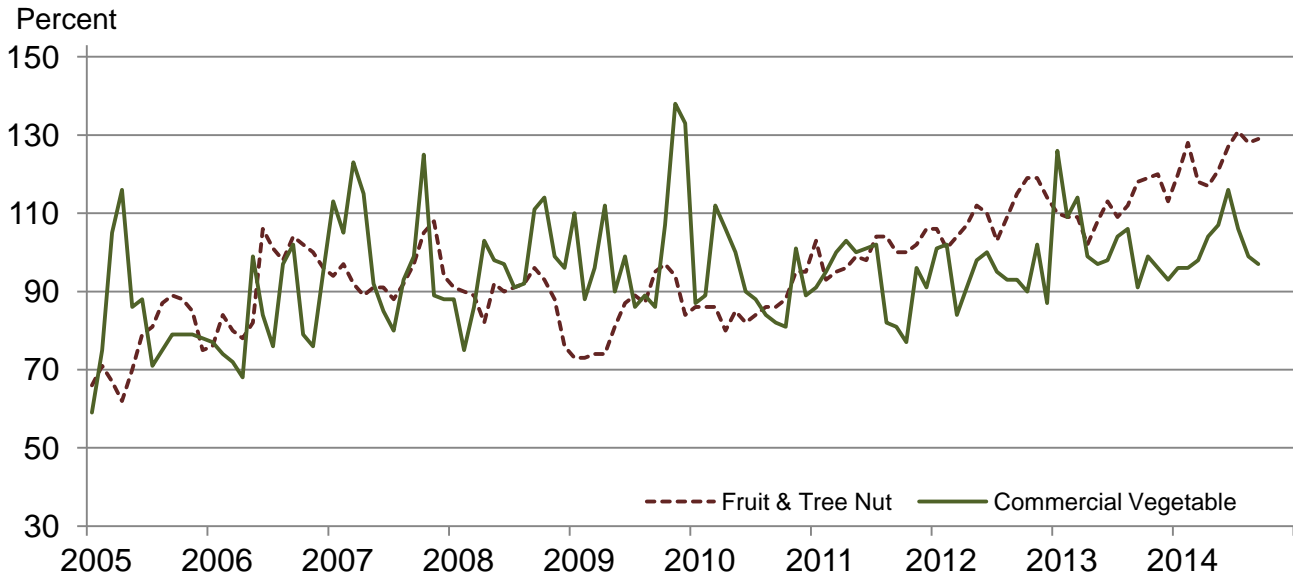
Received Indexes by Month, Livestock Product, All Product, and All Crop – United States: 2011=100



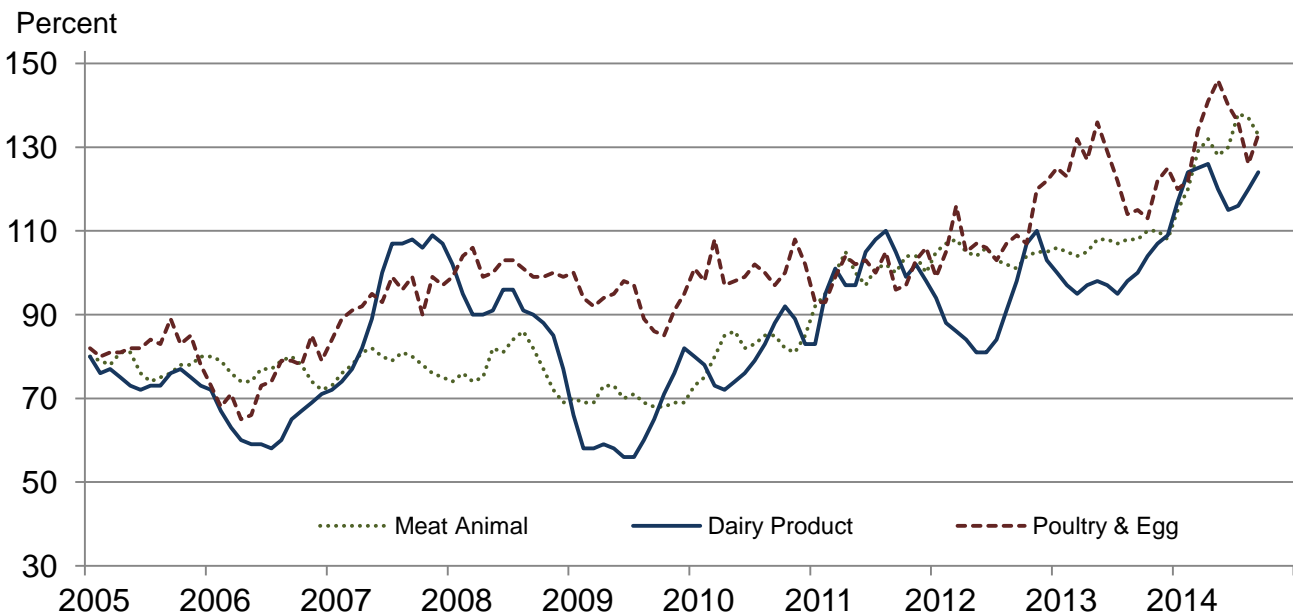
Received Indexes by Month, Food Grain, Feed Grain, and Oilseed – United States: 2011=100



Received Indexes by Month, Fruit & Tree Nut and Commercial Vegetable – United States: 2011=100



Received Indexes by Month, Meat Animal, Dairy Product, and Poultry & Egg – United States: 2011=100



Prices Received for Field Crops and Fruits – United States: September 2014 with Comparisons

Commodity	Average 2011	September 2013	August 2014	Preliminary September 2014
Field crops				
Austrian winter peasdollars/cwt	19.50	(D)	(D)	(S)
Barley, alldollars/bushel	4.79	5.88	5.60	5.15
Feeddollars/bushel	4.59	4.25	3.32	3.17
Maltingdollars/bushel	4.83	6.44	6.11	5.65
Beans, dry edibledollars/cwt	34.60	39.10	36.20	30.90
Canoladollars/cwt	23.10	20.70	17.80	16.00
Chickpeas, alldollars/cwt	35.70	33.50	32.70	(D)
Largedollars/cwt	39.20	34.00	33.30	(D)
Smalldollars/cwt	23.40	24.00	(D)	(D)
Corndollars/bushel	6.02	5.40	3.63	3.38
Cotton, Uplanddollars/pound	0.880	0.746	0.705	0.716
Cottonseed ¹dollars/ton	131.00	190.00	182.00	(NA)
Flaxseeddollars/bushel	14.20	13.10	13.30	12.50
Hay, all, baleddollars/ton	159.00	174.00	185.00	176.00
Alfalfadollars/ton	176.00	194.00	209.00	197.00
Otherdollars/ton	119.00	133.00	134.00	129.00
Lentilsdollars/cwt	27.50	23.70	20.00	23.20
Oatsdollars/bushel	3.42	3.57	3.25	3.08
Peanuts, in-shelldollars/pound	0.252	0.253	0.221	(D)
Peas, dry edibledollars/cwt	13.60	14.30	11.00	9.56
Potatoesdollars/cwt	9.78	8.48	8.22	8.07
Rice, alldollars/cwt	13.70	15.60	15.40	15.50
Longdollars/cwt	12.30	15.30	14.30	14.60
Medium and shortdollars/cwt	18.40	17.80	19.60	20.20
Sorghum graindollars/cwt	10.70	8.17	7.13	6.58
Soybeansdollars/bushel	12.50	13.30	12.40	11.20
Sunflowers, alldollars/cwt	29.00	22.60	22.40	18.30
Wheat, alldollars/bushel	7.44	6.80	5.98	5.72
Winterdollars/bushel	6.93	6.80	5.90	5.56
Durumdollars/bushel	9.22	7.84	8.03	7.62
Other springdollars/bushel	8.33	6.71	5.94	5.79
Hard red winter ¹dollars/bushel	7.07	6.92	6.03	(NA)
Soft red winter ¹dollars/bushel	6.77	6.22	5.11	(NA)
Hard red spring ¹dollars/bushel	8.38	6.72	5.90	(NA)
White ¹dollars/bushel	6.58	6.71	6.40	(NA)
Fruits				
Citrus, equivalent on-tree				
Grapefruitdollars/box	7.47	8.76	5.99	8.59
Lemonsdollars/box	12.30	27.85	39.16	36.72
Orangesdollars/box	8.16	12.24	15.62	13.74
Tangelosdollars/box	3.50	(S)	(S)	(S)
Tangerines and mandarinsdollars/box	15.30	(S)	(S)	(S)
Noncitrus, fresh				
Apples ²dollars/pound	0.325	(NA)	0.375	0.483
Grapes ²dollars/ton	628.00	(NA)	1,530.00	1,400.00
Peaches ²dollars/ton	507.00	(NA)	1,020.00	858.00
Pears ²dollars/ton	559.00	(NA)	704.00	706.00
Strawberriesdollars/cwt	104.00	(NA)	92.70	129.00

(D) Withheld to avoid disclosing data for individual operations.

(NA) Not available.

(S) Insufficient number of reports to establish an estimate.

¹ Preliminary estimates not set for this item.

² Equivalent packinghouse-door returns for California, Michigan, New York (apples only), and Washington (apples, peaches, and pears). Prices as sold for other states.

Prices Received for Vegetables and Livestock – United States: September 2014 with Comparisons

[Price data source for livestock and poultry commodities is United States Department of Agriculture's Agricultural Marketing Service]

Commodity	Average 2011	September 2013	August 2014	Preliminary September 2014
Vegetables, fresh ¹				
Asparagus dollars/cwt	37.50	(NA)	(NA)	(NA)
Beans, snap ² dollars/cwt	69.00	(NA)	(D)	(D)
Broccoli dollars/cwt	41.60	(NA)	45.40	51.70
Cantaloupes ² dollars/cwt	16.50	(NA)	21.90	23.50
Carrots dollars/cwt	30.80	(NA)	23.10	21.70
Cauliflower dollars/cwt	47.00	(NA)	38.30	66.90
Celery dollars/cwt	22.50	(NA)	17.70	16.50
Corn, sweet dollars/cwt	30.70	(NA)	28.40	25.40
Cucumbers ² dollars/cwt	18.70	(NA)	29.70	29.40
Lettuce dollars/cwt	24.30	(NA)	29.60	34.70
Onions ³ dollars/cwt	11.90	(NA)	14.00	12.30
Tomatoes dollars/cwt	51.20	(NA)	31.80	31.00
Livestock				
Calves dollars/cwt	142.00	200.00	271.00	278.00
Cattle, all beef dollars/cwt	115.00	122.00	158.00	156.00
Cows ⁴ dollars/cwt	71.60	83.90	121.00	119.00
Steers and heifers dollars/cwt	117.00	124.00	159.00	157.00
Milk cows ⁵ dollars/head	1420.00	(NA)	(NA)	(NA)
Hogs, all dollars/cwt	66.50	70.70	83.20	73.40
Barrows and gilts dollars/cwt	66.80	70.60	82.90	73.40
Sows dollars/cwt	57.90	74.40	91.60	72.20
Dairy and poultry				
Milk, all ⁶ dollars/cwt	20.10	20.10	24.10	25.00
Fat test percent	3.71	3.70	3.64	3.70
Broilers, live ⁷ dollars/pound	0.459	0.550	0.610	0.660
Eggs, all ⁸ dollars/dozen	0.969	1.030	1.080	1.050
Market ^{8 9} dollars/dozen	0.796	0.823	0.861	0.825
Turkeys, live ^{8 10} dollars/pound	0.680	0.679	0.756	0.773
Adjusted for seasonal variation				
Eggs, all dollars/dozen	0.979	1.070	1.040	1.090
Seasonal factor percent	101	96	104	97
Milk, all ⁶ dollars/cwt	20.20	19.60	24.20	24.50
Seasonal factor percent	100	102	100	102

(D) Withheld to avoid disclosing data for individual operations.

(NA) Not available.

¹ Beginning January 2006, point of first sale. FOB shipping point for prior years.

² Monthly estimates began January 1995.

³ Includes some processing.

⁴ Beef cows and cull dairy cows sold for slaughter.

⁵ Animals sold for dairy herd replacement only. Prices available for January, April, July, and October.

⁶ Before deductions for hauling. Includes quality, quantity, and other premiums. Excludes hauling subsidies.

⁷ Live weight equivalent price.

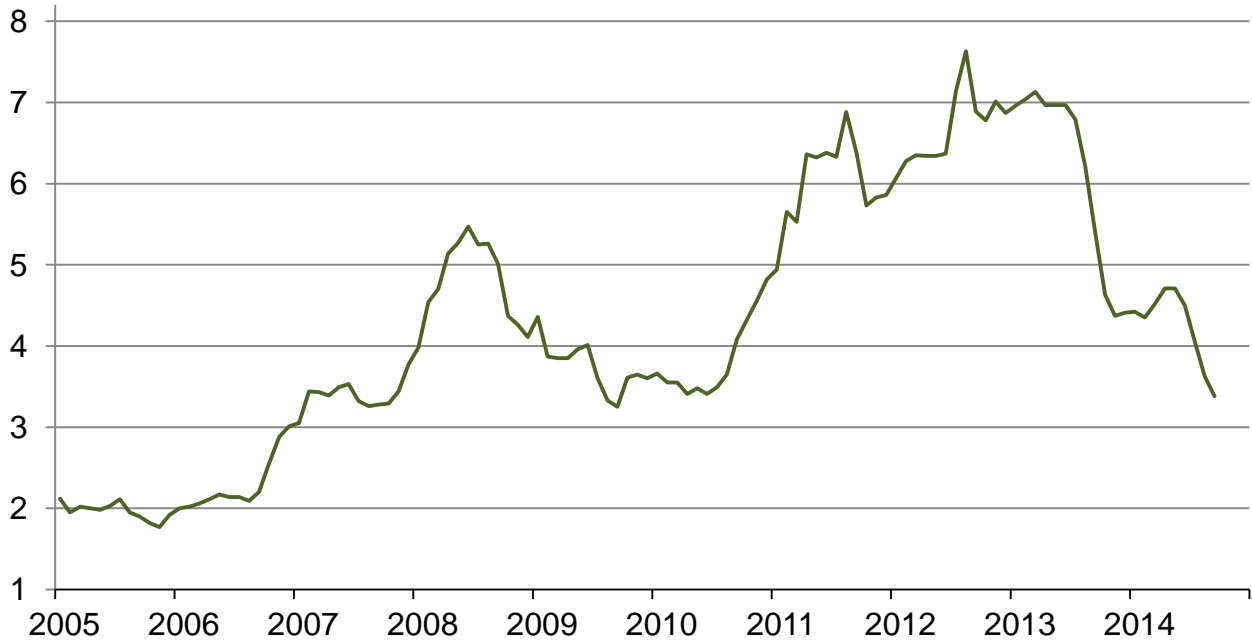
⁸ Mid-month price.

⁹ Also referred to as table eggs.

¹⁰ Live weight equivalent price is used when actual live weight price is not available. Beginning January 2011, price reflects FOB shipping point basis. Prior year price reflects delivered basis.

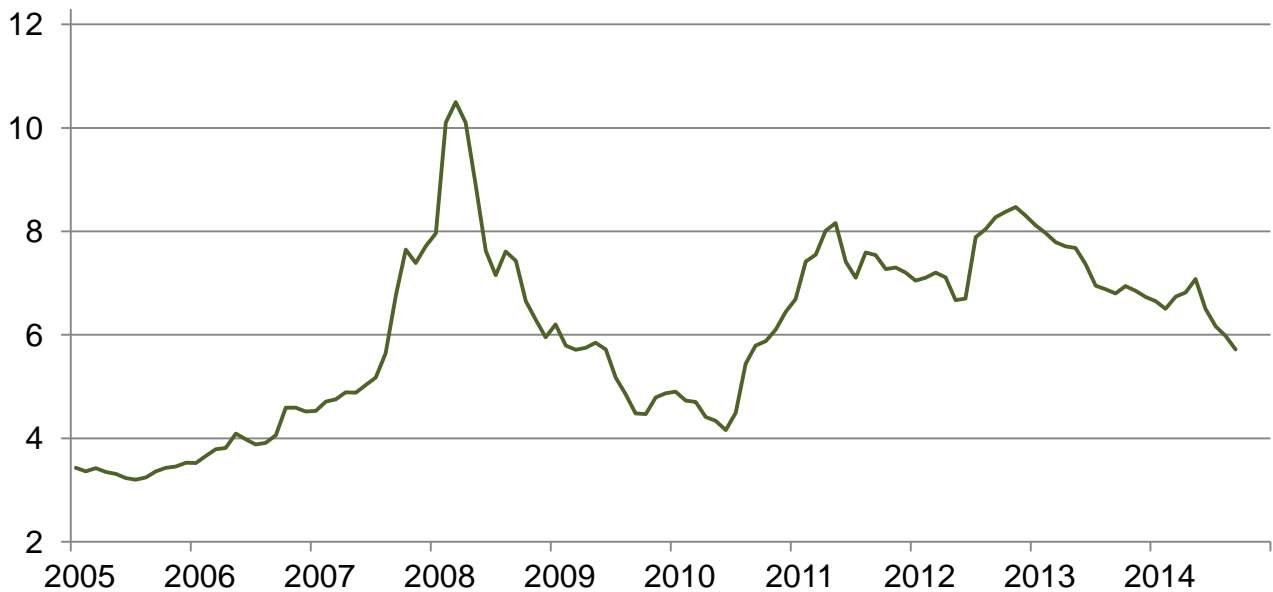
Prices Received for Corn by Month – United States

Dollars per bushel



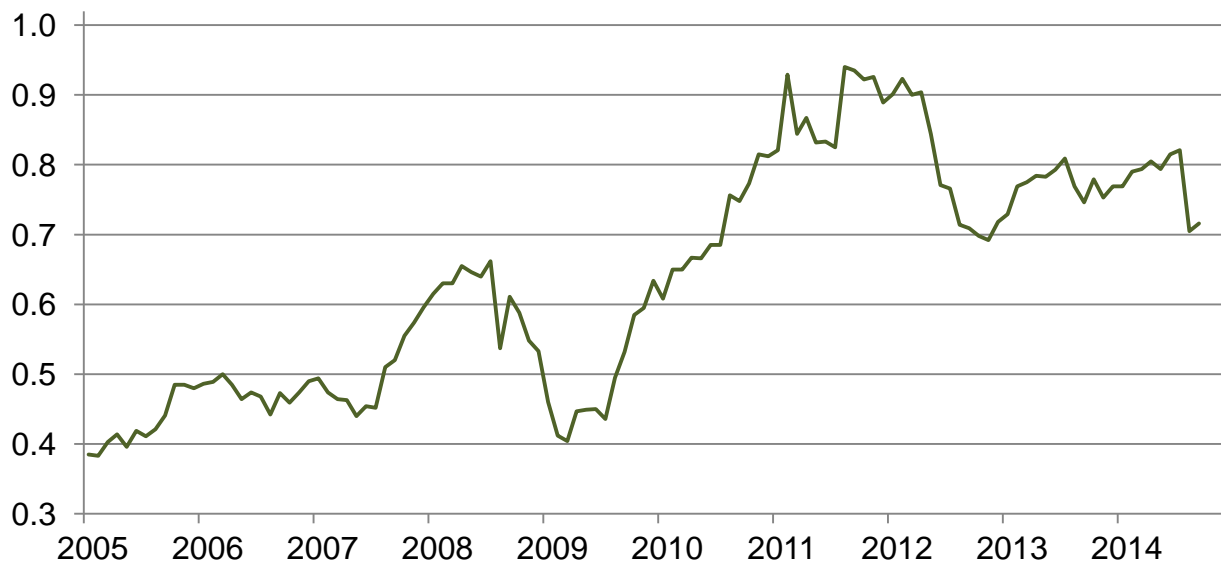
Prices Received for Wheat by Month – United States

Dollars per bushel



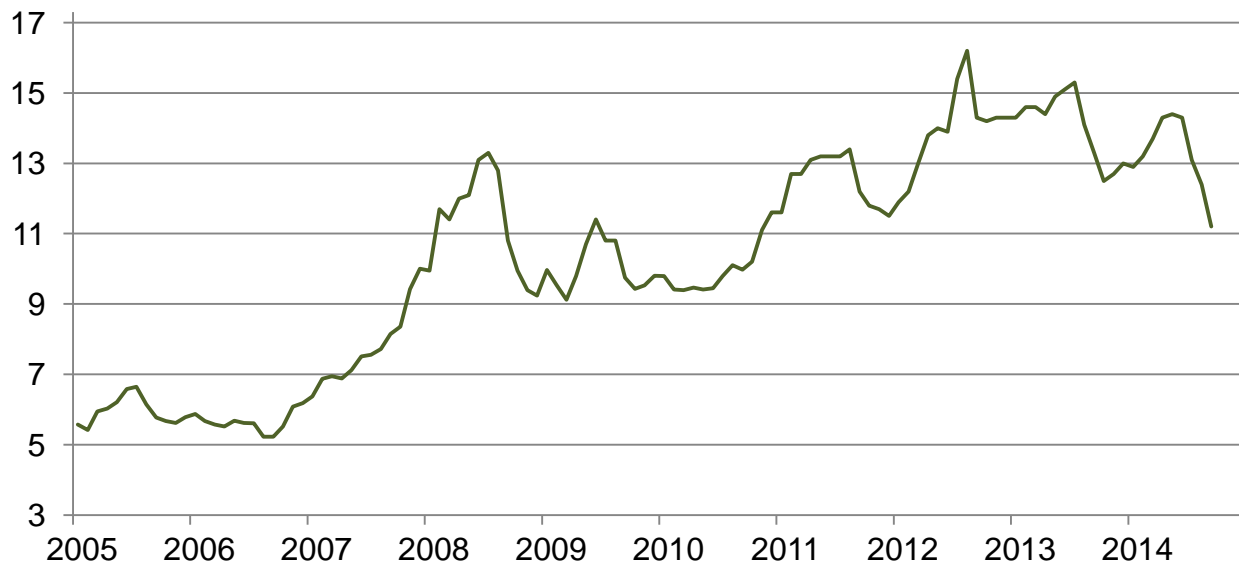
Prices Received for Upland Cotton by Month – United States

Dollars per pound



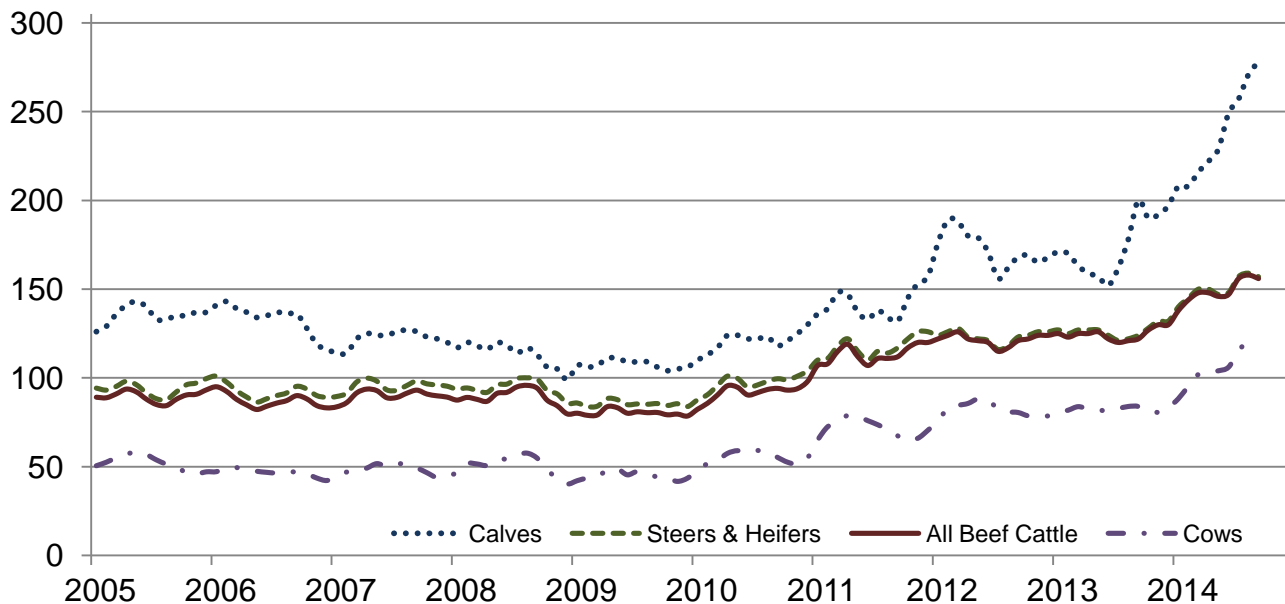
Prices Received for Soybeans by Month – United States

Dollars per bushel



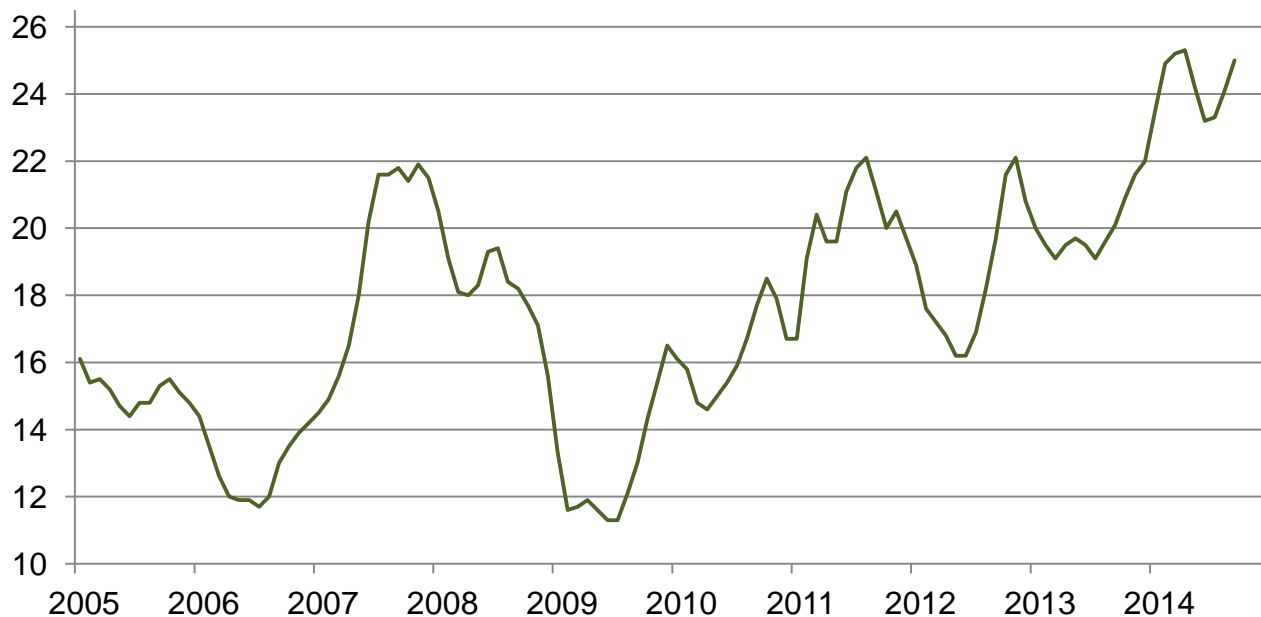
Prices Received for Cattle by Month – United States

Dollars per cwt



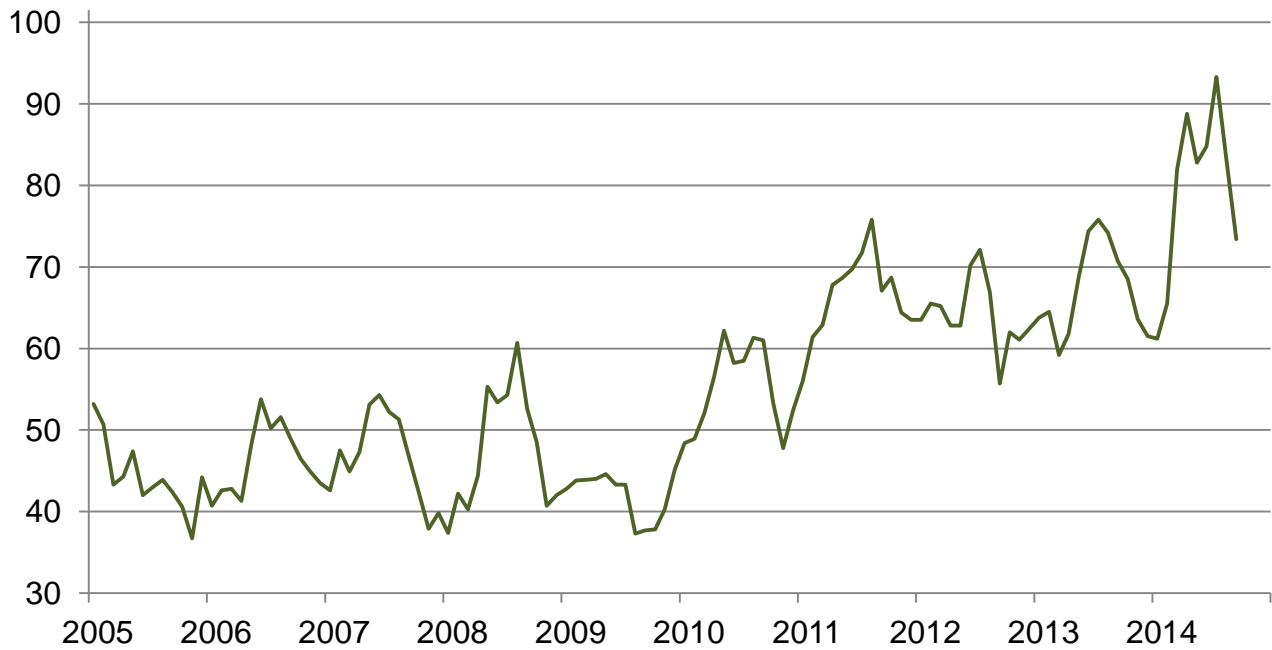
Prices Received for Milk by Month – United States

Dollars per cwt



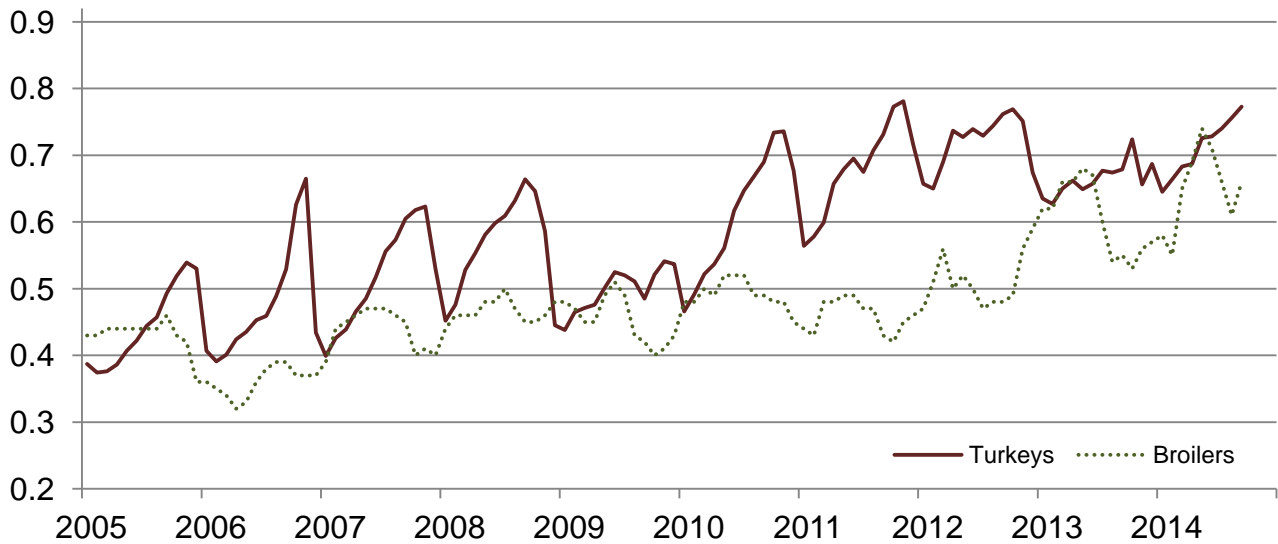
Prices Received for Hogs by Month – United States

Dollars per cwt



Prices Received for Poultry by Month – United States

Dollars per pound



Prices Received for All Wheat, Corn, and Soybeans by Month – United States: 2014 with Comparisons

[Current month prices are mid-month; prices for previous months and years are for the entire month. Blank data cells indicate estimation period has not yet begun]

Month	All wheat			Corn			Soybeans		
	2012	2013	Preliminary 2014	2012	2013	Preliminary 2014	2012	2013	Preliminary 2014
	(dollars per bushel)	(dollars per bushel)	(dollars per bushel)	(dollars per bushel)	(dollars per bushel)	(dollars per bushel)	(dollars per bushel)	(dollars per bushel)	(dollars per bushel)
January	7.05	8.12	6.65	6.07	6.96	4.42	11.90	14.30	12.90
February	7.10	7.97	6.50	6.28	7.04	4.35	12.20	14.60	13.20
March	7.20	7.79	6.74	6.35	7.13	4.52	13.00	14.60	13.70
April	7.11	7.71	6.82	6.34	6.97	4.71	13.80	14.40	14.30
May	6.67	7.68	7.08	6.34	6.97	4.71	14.00	14.90	14.40
June	6.70	7.37	6.50	6.37	6.97	4.50	13.90	15.10	14.30
July	7.89	6.95	6.16	7.14	6.79	4.06	15.40	15.30	13.10
August	8.04	6.88	5.98	7.63	6.21	3.63	16.20	14.10	12.40
September ...	8.27	6.80	5.72	6.89	5.40	3.38	14.30	13.30	11.20
October	8.38	6.94		6.78	4.63		14.20	12.50	
November	8.47	6.85		7.01	4.37		14.30	12.70	
December	8.30	6.73		6.87	4.41		14.30	13.00	

Prices Received for Beef Cattle and All Hogs by Month – United States: 2014 with Comparisons

[Current month prices are mid-month; prices for previous months and years are for the entire month. Blank data cells indicate estimation period has not yet begun]

Month	Beef cattle ¹			All hogs ²		
	2012	2013	Preliminary 2014	2012	2013	Preliminary 2014
	(dollars per cwt)	(dollars per cwt)	(dollars per cwt)	(dollars per cwt)	(dollars per cwt)	(dollars per cwt)
January	122.00	125.00	138.00	63.50	63.80	61.20
February	124.00	123.00	144.00	65.50	64.50	65.50
March	126.00	125.00	148.00	65.20	59.20	81.90
April	122.00	125.00	148.00	62.80	61.80	88.80
May	121.00	126.00	146.00	62.80	68.60	82.80
June	120.00	122.00	147.00	70.20	74.40	84.80
July	115.00	120.00	156.00	72.10	75.80	93.30
August	117.00	121.00	158.00	66.90	74.20	83.20
September	121.00	122.00	156.00	55.70	70.70	73.40
October	122.00	127.00		62.00	68.50	
November	124.00	130.00		61.10	63.60	
December	124.00	130.00		62.40	61.50	

¹ Cows and steers & heifers.

² Barrows & gilts and sows.

Prices Received for All Wheat – States and United States: September 2014 with Comparisons

State	September 2013	August 2014	Preliminary September 2014
	(dollars per bushel)	(dollars per bushel)	(dollars per bushel)
Arizona	(D)	(D)	(D)
Arkansas	6.14	4.97	(D)
California	(D)	(D)	(S)
Colorado	6.76	6.05	5.30
Idaho	7.06	6.28	5.88
Illinois	6.36	4.70	4.40
Indiana	6.29	4.80	4.50
Kansas	6.97	6.07	5.44
Michigan	6.51	5.73	5.35
Minnesota	6.66	5.84	5.30
Missouri	6.29	5.29	4.90
Montana	6.92	6.22	6.02
Nebraska	6.67	5.82	5.45
North Carolina	5.46	4.84	4.60
North Dakota	6.78	6.08	5.63
Ohio	6.24	5.54	5.20
Oklahoma	6.89	6.36	5.75
Oregon	6.79	6.93	(D)
South Dakota	6.63	5.64	5.29
Texas	7.58	6.11	5.67
Washington	6.74	6.64	6.54
United States	6.80	5.98	5.72

(D) Withheld to avoid disclosing data for individual operations.

(S) Insufficient number of reports to establish an estimate.

Prices Received for Winter Wheat – States and United States: September 2014 with Comparisons

State	September 2013	August 2014	Preliminary September 2014
	(dollars per bushel)	(dollars per bushel)	(dollars per bushel)
Arkansas	6.14	4.97	(D)
California	(D)	(D)	(S)
Colorado	6.84	6.06	5.30
Idaho	6.99	6.25	5.75
Illinois	6.36	4.70	4.40
Indiana	6.29	4.80	4.50
Kansas	6.97	6.07	5.44
Michigan	6.51	5.73	5.35
Minnesota	6.61	5.05	(S)
Missouri	6.29	5.29	4.90
Montana	7.07	6.18	5.59
Nebraska	6.67	5.82	5.45
North Carolina	5.46	4.84	4.60
North Dakota	6.53	5.06	4.46
Ohio	6.24	5.54	5.20
Oklahoma	6.89	6.36	5.75
Oregon	6.72	6.90	(D)
South Dakota	6.53	5.60	5.00
Texas	7.58	6.11	5.67
Washington	6.69	6.54	6.37
United States	6.80	5.90	5.56

(D) Withheld to avoid disclosing data for individual operations.

(S) Insufficient number of reports to establish an estimate.

Prices Received for Durum Wheat – States and United States: September 2014 with Comparisons

State	September 2013	August 2014	Preliminary September 2014
	(dollars per bushel)	(dollars per bushel)	(dollars per bushel)
Arizona	(D)	(D)	(D)
California	(S)	(S)	(S)
Idaho	(D)	(S)	(S)
Montana	(D)	7.74	7.40
North Dakota	7.91	7.92	7.60
United States	7.84	8.03	7.62

(D) Withheld to avoid disclosing data for individual operations.

(S) Insufficient number of reports to establish an estimate.

Prices Received for Spring Wheat – States and United States: September 2014 with Comparisons

State	September 2013	August 2014	Preliminary September 2014
	(dollars per bushel)	(dollars per bushel)	(dollars per bushel)
Colorado	(D)	(D)	(D)
Idaho	7.21	6.35	6.50
Minnesota	6.66	5.85	5.30
Montana	6.77	6.06	6.46
North Dakota	6.63	5.71	5.53
Oregon	7.28	7.10	(D)
South Dakota	6.67	5.67	5.50
Washington	7.03	7.12	7.25
United States	6.71	5.94	5.79

(D) Withheld to avoid disclosing data for individual operations.

Prices Received for All Barley – States and United States: September 2014 with Comparisons

State	September 2013	August 2014	Preliminary September 2014
	(dollars per bushel)	(dollars per bushel)	(dollars per bushel)
California	(D)	6.86	(S)
Colorado	6.26	4.73	(S)
Idaho	6.26	5.48	5.40
Minnesota	6.18	5.71	(S)
Montana	6.25	6.02	(D)
North Dakota	6.30	5.34	5.54
Oregon	4.22	(D)	(D)
Utah	(D)	3.55	3.18
Washington	4.41	3.55	3.41
Wyoming	(D)	(D)	(D)
United States	5.88	5.60	5.15

(D) Withheld to avoid disclosing data for individual operations.

(S) Insufficient number of reports to establish an estimate.

Prices Received for Malting Barley – States: September 2014 with Comparisons

State	September 2013	August 2014	Preliminary September 2014
	(dollars per bushel)	(dollars per bushel)	(dollars per bushel)
Idaho	6.50	6.09	(D)
Minnesota	6.19	(D)	(S)
Montana	6.50	6.17	(D)
North Dakota	6.47	5.96	5.70
Wyoming	(D)	(D)	(D)

(D) Withheld to avoid disclosing data for individual operations.

(S) Insufficient number of reports to establish an estimate.

Prices Received for Feed Barley – States: September 2014 with Comparisons

State	September 2013	August 2014	Preliminary September 2014
	(dollars per bushel)	(dollars per bushel)	(dollars per bushel)
Idaho	4.04	3.62	2.89
Minnesota	(D)	4.81	(S)
Montana	3.80	2.60	(D)
North Dakota	3.62	3.10	2.50
Wyoming	(D)	(D)	(D)

(D) Withheld to avoid disclosing data for individual operations.

(S) Insufficient number of reports to establish an estimate.

Prices Received for Corn – States and United States: September 2014 with Comparisons

State	September 2013	August 2014	Preliminary September 2014
	(dollars per bushel)	(dollars per bushel)	(dollars per bushel)
Colorado	6.07	4.33	3.88
Illinois	5.25	3.74	3.40
Indiana	5.11	3.88	3.50
Iowa	5.66	3.61	3.30
Kansas	5.13	3.63	3.16
Kentucky	5.11	4.10	3.70
Michigan	5.37	3.55	3.40
Minnesota	5.69	3.46	3.25
Missouri	5.08	3.75	3.30
Nebraska	5.64	3.68	3.30
North Carolina	4.92	4.54	4.10
North Dakota	5.67	3.35	2.88
Ohio	5.57	3.62	3.40
Pennsylvania	5.15	3.97	3.71
South Dakota	5.42	3.13	2.84
Tennessee	5.04	3.96	3.60
Texas	5.46	3.67	3.77
Wisconsin	5.68	3.80	3.40
United States	5.40	3.63	3.38

Prices Received for Soybeans – States and United States: September 2014 with Comparisons

State	September 2013	August 2014	Preliminary September 2014
	(dollars per bushel)	(dollars per bushel)	(dollars per bushel)
Arkansas	13.30	12.40	11.40
Illinois	13.50	12.50	11.40
Indiana	13.40	12.90	12.10
Iowa	13.90	12.40	11.30
Kansas	13.10	13.10	11.00
Kentucky	13.30	12.70	11.00
Louisiana	13.40	11.90	(D)
Michigan	13.00	12.40	11.20
Minnesota	13.30	12.60	11.80
Mississippi	13.20	11.90	10.40
Missouri	13.50	12.50	11.00
Nebraska	13.00	12.00	11.00
North Carolina	13.20	13.10	11.30
North Dakota	12.60	10.70	9.40
Ohio	13.00	13.10	12.20
South Dakota	12.70	11.80	10.50
Tennessee	13.00	11.90	10.50
Wisconsin	12.90	12.50	11.10
United States	13.30	12.40	11.20

(D) Withheld to avoid disclosing data for individual operations.

Prices Received for Oats – States and United States: September 2014 with Comparisons

State	September 2013	August 2014	Preliminary September 2014
	(dollars per bushel)	(dollars per bushel)	(dollars per bushel)
Illinois	(S)	(D)	(S)
Iowa	4.02	3.47	3.40
Michigan	3.28	3.60	(D)
Minnesota	3.43	3.33	3.20
Montana	(D)	(S)	(S)
Nebraska	4.04	3.00	(D)
New York	3.27	(D)	(D)
North Dakota	3.23	2.33	2.30
Oregon	(D)	(D)	(S)
Pennsylvania	(D)	3.68	3.58
South Dakota	3.45	2.97	2.95
Texas	(S)	(S)	(S)
Wisconsin	3.89	3.48	3.35
United States	3.57	3.25	3.08

(D) Withheld to avoid disclosing data for individual operations.

(S) Insufficient number of reports to establish an estimate.

Prices Received for Sorghum Grain – States and United States: September 2014 with Comparisons

State	September 2013	August 2014	Preliminary September 2014
	(dollars per cwt)	(dollars per cwt)	(dollars per cwt)
Arkansas	(D)	7.22	7.10
Illinois	(D)	(D)	(S)
Kansas	8.70	5.71	5.46
Louisiana	8.84	7.92	7.50
Missouri	8.08	7.16	6.40
Nebraska	8.45	6.11	5.65
Oklahoma	7.77	5.95	5.60
Texas	7.88	7.13	6.70
United States	8.17	7.13	6.58

(D) Withheld to avoid disclosing data for individual operations.

(S) Insufficient number of reports to establish an estimate.

Prices Received for Dry Beans – States and United States: September 2014 with Comparisons

State	September 2013	August 2014	Preliminary September 2014
	(dollars per cwt)	(dollars per cwt)	(dollars per cwt)
California	43.00	(D)	(S)
Colorado	39.60	33.10	(D)
Idaho	34.10	33.20	(S)
Michigan	(D)	(D)	(D)
Minnesota	(S)	(S)	(S)
Nebraska	42.40	30.70	28.00
North Dakota	37.60	25.80	27.50
United States	39.10	36.20	30.90

(D) Withheld to avoid disclosing data for individual operations.

(S) Insufficient number of reports to establish an estimate.

Prices Received for Peanuts (in shell) – States and United States: September 2014 with Comparisons

State	September 2013	August 2014	Preliminary September 2014
	(dollars per pound)	(dollars per pound)	(dollars per pound)
Alabama	0.224	0.224	(S)
Florida	0.252	0.235	(D)
Georgia	0.236	0.204	(S)
Mississippi	0.272	0.195	(S)
New Mexico	(S)	(S)	(S)
North Carolina	0.322	(S)	(D)
Oklahoma	0.232	(S)	(S)
South Carolina	0.291	0.226	(S)
Texas	0.247	0.290	(S)
Virginia	0.298	(S)	(S)
United States	0.253	0.221	(D)

(D) Withheld to avoid disclosing data for individual operations.

(S) Insufficient number of reports to establish an estimate.

Prices Received for Sunflower – States and United States: September 2014 with Comparisons

State	September 2013	August 2014	Preliminary September 2014
	(dollars per cwt)	(dollars per cwt)	(dollars per cwt)
Colorado	(S)	(S)	(S)
Kansas	(D)	(D)	(D)
Minnesota	(D)	(D)	(S)
North Dakota	24.30	24.40	23.00
South Dakota	19.70	16.80	16.50
United States	22.60	22.40	18.30

(D) Withheld to avoid disclosing data for individual operations.

(S) Insufficient number of reports to establish an estimate.

Prices Received for Canola – States and United States: September 2014 with Comparisons

State	September 2013	August 2014	Preliminary September 2014
	(dollars per cwt)	(dollars per cwt)	(dollars per cwt)
Minnesota	(D)	(D)	(S)
North Dakota	20.70	17.80	16.00
United States	20.70	17.80	16.00

(D) Withheld to avoid disclosing data for individual operations.

(S) Insufficient number of reports to establish an estimate.

Prices Received for Flaxseed – States and United States: September 2014 with Comparisons

State	September 2013	August 2014	Preliminary September 2014
	(dollars per bushel)	(dollars per bushel)	(dollars per bushel)
North Dakota	13.10	13.30	12.50
United States	13.10	13.30	12.50

Prices Received for Upland Cotton and Cottonseed – States and United States: September 2014 with Comparisons

[Cottonseed marketing year August - February. Beginning with the 2014 marketing year, preliminary prices will no longer be published]

State	Cotton, Upland			Cottonseed ¹		
	September 2013	August 2014	Preliminary September 2014	August 2013	July 2014	August 2014
	(dollars per pound)	(dollars per pound)	(dollars per pound)	(dollars per ton)	(dollars per ton)	(dollars per ton)
Alabama	(S)	(S)	(S)	(NA)	(NA)	(NA)
Arizona	(D)	(S)	(S)	(NA)	(NA)	(NA)
Arkansas	(D)	(S)	(S)	(NA)	(NA)	(NA)
California	(D)	(S)	(S)	(NA)	(NA)	(NA)
Georgia	(D)	(S)	(S)	(NA)	(NA)	(NA)
Louisiana	(D)	(S)	(S)	(NA)	(NA)	(NA)
Mississippi	(D)	(S)	(S)	(NA)	(NA)	(NA)
North Carolina	(D)	(S)	(S)	(NA)	(NA)	(NA)
Tennessee	(D)	(S)	(D)	(NA)	(NA)	(NA)
Texas	0.748	0.705	0.716	(NA)	(NA)	182.00
United States	0.746	0.705	0.716	(NA)	(NA)	182.00

(D) Withheld to avoid disclosing data for individual operations.

(NA) Not available.

(S) Insufficient number of reports to establish an estimate.

¹ Preliminary price discontinued beginning September 2014.

Prices Received and Farm Marketings for Upland Cotton and Rice – California, Other States, and United States: September 2014 with Comparisons

Item	September 2013	August 2014	Preliminary September 2014
Cotton, Upland			
United States			
Average Pricedollars/pound	0.746	0.705	0.716
Marketings ¹1,000 bales	208	80	(NA)
Rice, all			
United States			
Average Pricedollars/cwt	15.60	15.40	15.50
Marketings ²1,000 cwt	11,420	9,596	(NA)
Rice, long			
United States			
Average Pricedollars/cwt	15.30	14.30	14.60
Marketings ²1,000 cwt	10,032	7,618	(NA)
Rice, medium and short			
California			
Average Pricedollars/cwt	(NA)	20.30	21.60
Other States ³			
Average Pricedollars/cwt	(NA)	15.60	(D)
United States			
Average Pricedollars/cwt	17.80	19.60	20.20
Marketings ²1,000 cwt	1,388	1,978	(NA)

(D) Withheld to avoid disclosing data for individual operations.

(NA) Not available.

¹ Marketings based on a survey of cotton buyers in the major producing States - Alabama, Arizona, Arkansas, California, Georgia, Louisiana, Mississippi, North Carolina, Tennessee, and Texas.

² Purchases by private firms and rice (rough equivalent) shipped by cooperatives.

³ Other States include Arkansas, Louisiana, Mississippi, Missouri, and Texas.

Prices Received for Hay by Type – States and United States: September 2014 with Comparisons

State	All hay			Alfalfa hay			Other hay		
	September 2013	August 2014	Preliminary September 2014	September 2013	August 2014	Preliminary September 2014	September 2013	August 2014	Preliminary September 2014
	(dollars per ton)	(dollars per ton)	(dollars per ton)	(dollars per ton)	(dollars per ton)	(dollars per ton)	(dollars per ton)	(dollars per ton)	(dollars per ton)
Arizona	181.00	240.00	195.00	180.00	240.00	195.00	200.00	205.00	220.00
California	194.00	232.00	217.00	201.00	245.00	230.00	161.00	190.00	170.00
Colorado	234.00	209.00	215.00	235.00	210.00	215.00	230.00	200.00	210.00
Idaho	180.00	198.00	189.00	180.00	200.00	190.00	180.00	180.00	170.00
Illinois	162.00	135.00	149.00	175.00	175.00	175.00	125.00	100.00	100.00
Iowa	191.00	145.00	140.00	210.00	156.00	153.00	130.00	102.00	100.00
Kansas	177.00	163.00	149.00	225.00	191.00	173.00	119.00	99.00	93.00
Kentucky	120.00	122.00	115.00	195.00	190.00	190.00	95.00	90.00	90.00
Michigan	168.00	141.00	158.00	180.00	160.00	170.00	140.00	115.00	130.00
Minnesota	163.00	103.00	105.00	190.00	116.00	125.00	120.00	90.00	74.00
Missouri	127.00	82.00	84.00	235.00	170.00	170.00	105.00	70.00	70.00
Montana	139.00	128.00	129.00	140.00	130.00	130.00	130.00	120.00	120.00
Nebraska	164.00	104.00	102.00	181.00	112.00	109.00	136.00	87.00	86.00
Nevada	196.00	255.00	239.00	196.00	260.00	240.00	190.00	225.00	215.00
New Mexico	238.00	260.00	245.00	246.00	270.00	255.00	191.00	190.00	175.00
New York	143.00	181.00	194.00	205.00	205.00	221.00	137.00	174.00	176.00
North Dakota	110.00	87.00	81.00	118.00	92.00	84.00	76.00	60.00	59.00
Ohio	165.00	143.00	138.00	190.00	175.00	170.00	140.00	115.00	105.00
Oklahoma	99.00	135.00	124.00	198.00	217.00	190.00	89.00	83.00	85.00
Oregon	200.00	227.00	219.00	200.00	230.00	225.00	200.00	225.00	210.00
Pennsylvania	162.00	177.00	191.00	178.00	187.00	204.00	156.00	174.00	187.00
South Dakota	128.00	116.00	109.00	135.00	121.00	114.00	105.00	89.00	89.00
Texas	126.00	123.00	107.00	235.00	246.00	230.00	95.00	77.00	72.00
Utah	186.00	205.00	205.00	187.00	205.00	205.00	150.00	165.00	165.00
Washington	210.00	226.00	219.00	200.00	220.00	215.00	235.00	240.00	230.00
Wisconsin	179.00	122.00	138.00	200.00	130.00	150.00	120.00	100.00	103.00
Wyoming	192.00	155.00	150.00	195.00	160.00	155.00	175.00	140.00	135.00
United States ..	174.00	185.00	176.00	194.00	209.00	197.00	133.00	134.00	129.00

Prices Received for Apples – States and United States: September 2014 with Comparisons

[Equivalent packinghouse-door returns for California, Michigan, New York, and Washington. Prices at point of first sale for other States]

State	Apples, fresh use		
	September 2013	August 2014	Preliminary September 2014
	(dollars per pound)	(dollars per pound)	(dollars per pound)
California	(NA)	0.653	0.389
Michigan	(NA)	(NA)	0.430
New York	(NA)	(NA)	(NA)
Ohio	(NA)	(NA)	(NA)
Pennsylvania	(NA)	(NA)	(NA)
Virginia	(NA)	0.290	0.300
Washington	(NA)	0.320	0.513
United States	(NA)	0.375	0.483

(NA) Not available.

Prices Received for Citrus Fruits by Utilization – States and United States: September 2013

[Net pounds per box: grapefruit in California-80, Florida-85, Texas-80; lemons-80; oranges in California-80, Florida-90, Texas-85; tangelos-90; tangerines and mandarins in Arizona and California-80, Florida-95]

Commodity, State, and type	FOB packed fresh	Equivalent returns					
		Packinghouse door			On-tree		
		All	Fresh	Process	All	Fresh	Process
	(dollars per box)	(dollars per box)	(dollars per box)	(dollars per box)	(dollars per box)	(dollars per box)	(dollars per box)
Grapefruit							
California ¹	17.60	10.94	10.94	(D)	8.76	8.76	(D)
United States	17.60	10.94	10.94	(D)	8.76	8.76	(D)
Lemons							
Arizona	(D)	(D)	(D)	(D)	(D)	(D)	(D)
California	48.30	33.05	39.04	(D)	27.24	33.02	(D)
United States	48.70	33.68	39.40	(D)	27.85	33.38	(D)
Oranges							
California	26.30	14.78	17.31	(D)	12.24	14.80	(D)
Valencia	26.30	14.78	17.31	(D)	12.24	14.80	(D)
United States	26.30	14.78	17.31	(D)	12.24	14.80	(D)

(D) ¹ Withheld to avoid disclosing data for individual operations.

¹ Some processed sales included in fresh sales.

Prices Received for Citrus Fruits by Utilization – States and United States: August 2014

[Net pounds per box: grapefruit in California-80, Florida-85, Texas-80; lemons-80; oranges in California-80, Florida-90, Texas-85; tangelos-90; tangerines and mandarins in Arizona and California-80, Florida-95]

Commodity, State, and type	FOB packed fresh	Equivalent returns					
		Packinghouse door			On-tree		
		All	Fresh	Process	All	Fresh	Process
	(dollars per box)	(dollars per box)	(dollars per box)	(dollars per box)	(dollars per box)	(dollars per box)	(dollars per box)
Grapefruit							
California ¹	15.00	8.21	8.21	(D)	5.99	5.99	(D)
United States	15.00	8.21	8.21	(D)	5.99	5.99	(D)
Lemons							
California	60.60	45.14	51.15	(D)	39.16	45.01	(D)
United States	60.60	45.14	51.15	(D)	39.16	45.01	(D)
Oranges							
California	29.40	18.20	20.23	(D)	15.62	17.67	(D)
Valencia	29.40	18.20	20.23	(D)	15.62	17.67	(D)
United States	29.40	18.20	20.23	(D)	15.62	17.67	(D)

(D) Withheld to avoid disclosing data for individual operations.

¹ Some processed sales included in fresh sales.

Prices Received for Citrus Fruits by Utilization – States and United States: September 2014

[Net pounds per box: grapefruit in California-80, Florida-85, Texas-80; lemons-80; oranges in California-80, Florida-90, Texas-85; tangelos-90; tangerines and mandarins in Arizona and California-80, Florida-95]

Commodity, State, and type	FOB packed fresh	Equivalent returns					
		Packinghouse door			On-tree		
		All	Fresh	Process	All	Fresh	Process
	(dollars per box)	(dollars per box)	(dollars per box)	(dollars per box)	(dollars per box)	(dollars per box)	(dollars per box)
Grapefruit							
California ¹	17.60	10.81	10.81	(D)	8.59	8.59	(D)
United States	17.60	10.81	10.81	(D)	8.59	8.59	(D)
Lemons							
Arizona	(D)	(D)	(D)	(D)	(D)	(D)	(D)
California	58.20	42.23	48.75	(D)	36.27	42.61	(D)
United States	58.60	42.69	49.15	(D)	36.72	43.01	(D)
Oranges							
California	30.00	16.34	20.83	(D)	13.74	18.27	(D)
Valencia	30.00	16.34	20.83	(D)	13.74	18.27	(D)
United States	30.00	16.34	20.83	(D)	13.74	18.27	(D)

(D) Withheld to avoid disclosing data for individual operations.
¹ Some processed sales included in fresh sales.

Prices Received for Potatoes – States and United States: September 2014 with Comparisons

State	September 2013	August 2014	Preliminary September 2014
	(dollars per cwt)	(dollars per cwt)	(dollars per cwt)
California			
Spring	(S)	(S)	(S)
Fall	(S)	(S)	(S)
All ¹	(S)	(S)	(S)
Colorado			
Fresh ²	13.60	10.50	(D)
All ¹	12.00	8.50	8.60
Florida	(S)	(S)	(S)
Idaho			
Fresh ²	8.80	4.55	(D)
Processing	7.50	7.55	(D)
All ¹	7.70	6.70	7.00
Maine	(D)	(D)	(D)
Michigan	10.90	(D)	(D)
Minnesota	9.65	(D)	(D)
New York	13.20	(D)	(D)
North Carolina	(S)	(S)	(S)
North Dakota			
Fresh ²	10.00	(S)	(D)
Processing	9.55	(S)	(D)
All ¹	9.65	(S)	(D)
Oregon	8.95	7.60	7.50
Texas	(S)	(D)	(D)
Virginia	(S)	(D)	(S)
Washington			
Processing	6.30	7.15	(D)
All ¹	7.35	7.45	7.35
Wisconsin			
Fresh ²	12.40	(D)	(D)
Processing	8.05	(D)	(D)
All ¹	10.30	(D)	(D)
United States			
Fresh ²	12.40	9.65	(D)
Processing	7.49	7.92	(D)
All ¹	8.48	8.22	8.07

(D) Withheld to avoid disclosing data for individual operations.

(S) Insufficient number of reports to establish an estimate.

¹ Average price of potatoes sold for all uses, including table stock, processing, seed, and livestock feed.

² Fresh market prices only. Includes table stock prices.

Prices Received for All Milk – States and United States: September 2014 with Comparisons

[Before deduction for hauling. Includes quality, quantity, and other premiums. Excludes hauling subsidies]

State	September 2013		August 2014		Preliminary September 2014	
	Price (dollars per cwt)	Fat test (percent)	Price (dollars per cwt)	Fat test (percent)	Price (dollars per cwt)	Fat test (percent)
Arizona	19.90	3.51	24.00	3.43	24.30	3.46
California	18.71	3.72	22.20	3.62	23.00	3.66
Colorado	20.30	3.49	24.10	3.44	24.70	3.50
Florida	24.20	3.62	29.20	3.58	29.70	3.60
Idaho	19.10	3.73	23.20	3.64	24.00	3.72
Illinois	20.70	3.71	24.60	3.64	25.60	3.67
Indiana	20.90	3.66	24.70	3.58	25.40	3.67
Iowa	20.40	3.70	24.60	3.60	25.80	3.68
Kansas	20.00	3.52	23.60	3.47	24.50	3.57
Michigan	20.60	3.64	24.40	3.56	25.10	3.64
Minnesota	20.20	3.79	24.20	3.73	26.20	3.82
New Mexico	18.90	3.49	21.90	3.44	22.50	3.50
New York	21.40	3.73	25.90	3.67	26.40	3.76
Ohio	21.30	3.78	24.90	3.60	25.60	3.69
Oregon	21.30	3.82	25.70	3.81	26.20	3.87
Pennsylvania	21.90	3.67	26.30	3.64	26.80	3.70
South Dakota ¹	21.00	3.90	25.00	3.87	26.60	3.94
Texas	20.50	3.76	24.30	3.72	25.00	3.78
Utah	19.50	3.71	23.80	3.59	24.20	3.65
Vermont	21.60	3.73	26.20	3.71	26.90	3.78
Virginia	23.40	3.63	27.90	3.57	28.30	3.65
Washington	20.60	3.82	25.30	3.81	26.00	3.87
Wisconsin	20.20	3.71	24.40	3.68	26.30	3.76
United States	20.10	3.70	24.10	3.64	25.00	3.70

¹ Beginning in March 2014, South Dakota was added and Missouri was removed from the monthly price program.

Prices Received for Milk Cows – States and United States: July 2014 with Comparisons

[Animals sold for dairy herd replacement only. Milk cow price program suspended in 2013 during the April and July quarters. Quarterly United States milk cow prices are based on revised milk cow inventory]

State	July 2013	April 2014	July 2014
	(dollars per head)	(dollars per head)	(dollars per head)
Arizona	(NA)	2,000	2,100
California	(NA)	1,800	2,000
Colorado	(NA)	2,000	2,200
Florida	(NA)	1,800	1,900
Idaho	(NA)	1,950	2,000
Illinois	(NA)	1,750	1,860
Indiana	(NA)	1,750	1,850
Iowa	(NA)	1,850	1,990
Kansas	(NA)	1,750	2,050
Michigan	(NA)	1,850	1,950
Minnesota	(NA)	1,830	1,950
New Mexico	(NA)	1,750	1,950
New York	(NA)	1,660	1,800
Ohio	(NA)	1,700	1,800
Oregon	(NA)	1,700	1,900
Pennsylvania	(NA)	1,800	1,880
South Dakota ¹	(NA)	1,750	1,950
Texas	(NA)	1,800	2,000
Utah	(NA)	1,750	1,850
Vermont	(NA)	1,760	1,880
Virginia	(NA)	1,770	1,890
Washington	(NA)	1,700	1,950
Wisconsin	(NA)	1,900	2,100
United States	(NA)	1,810	1,970

(NA) Not available.

¹ Beginning in March 2014, South Dakota was added and Missouri was removed from the monthly price program.

Commodity Parity Prices and Price as Percent of Parity Price – United States: September 2014 with Comparisons

[Parity prices are computed under the provisions of Title III, Subtitle a, Section 301 (a) of the Agricultural Adjustment Act of 1938 as amended by the Agricultural Acts of 1948, 1949, and 1956. See January *Agricultural Prices* for details on adjusted base price and parity price computations. Parity data not available for blank cells. Primary source of data for livestock and milk prices is United States Department of Agriculture's Agricultural Marketing Service]

Commodity and unit	Adjusted base price	Parity price			Price as percent of parity		
		September 2013	August 2014	September 2014	September 2013	August 2014	September 2014
	(dollars)	(dollars)	(dollars)	(dollars)	(percent)	(percent)	(percent)
Basic commodities							
All wheat bushel	0.616	18.00	18.50	18.50	38	32	31
Rice cwt	1.32	46.70	39.70	39.60	33	39	39
Corn bushel	0.442	12.30	13.30	13.30	44	27	25
Cotton							
Upland pound	0.066	2.04	1.98	1.98	37	36	36
American Pima pound	0.137	3.77	4.12	4.11	33	41	41
Peanuts pound	0.024	0.764	0.721	0.720	33	31	37
Designated nonbasic							
All milk, to plants ¹ cwt	1.81	49.50	54.40	54.30	40	44	45
Honey, extracted ² pound	0.147	3.99	4.42	4.41	50	48	48
Wool and mohair							
Wool pound	0.114	3.03	3.43	3.42	50	42	42
Mohair pound	0.361	9.51	10.80	10.80	41	39	39
Other nonbasic							
Apples, fresh ³ pound	0.034	0.906	1.020	1.020	55	37	47
Barley bushel	0.452	12.60	13.60	13.60	47	41	38
Canola cwt	1.870	53.20	56.20	56.10	39	32	29
Cottonseed ton	19.10	504.00	574.00	573.00	38	40	32
Dry edible beans cwt	3.20	85.20	96.20	96.10	46	38	32
Flaxseed bushel	1.150	31.40	34.60	34.50	42	38	36
Oats bushel	0.284	7.50	8.53	8.53	48	38	36
Potatoes cwt	0.835	23.30	25.10	25.10	36	33	32
Sorghum grain cwt	0.748	21.50	22.50	22.50	38	32	29
Soybeans bushel	1.060	29.20	31.90	31.80	46	39	35
Sunflower, all cwt	2.12	59.50	63.70	63.60	38	35	29
Citrus (equivalent on-tree)							
Grapefruit box	0.724	19.70	21.80	21.70	44	27	40
Lemons box	1.36	37.40	40.90	40.80	74	96	90
Oranges box	0.769	20.10	23.10	23.10	61	68	59
Tangerines box	1.61	42.20	48.40	48.30	139	146	146
Livestock and poultry							
Beef cattle cwt	10.40	283.00	313.00	312.00	43	50	50
Calves cwt	14.30	388.00	430.00	429.00	52	63	65
Hogs cwt	5.75	155.00	173.00	173.00	46	48	42
Eggs ¹ dozen	0.092	2.52	2.76	2.76	42	38	39
Turkeys, live pound	0.060	1.610	1.800	1.800	42	42	43

¹ Seasonally adjusted price as percentage of parity price.

² Wholesale extracted. Adjusted base price derived from state annual averages prices weighted by production. For 1982 through 1985 the national averages are the support prices.

³ Equivalent packinghouse-door returns for California, New York, Oregon, and Washington. Price at point of first sale for other states.

Commodity Parity Prices – United States: September 2014 with Comparisons

[Parity prices are computed under the provisions of Title III, Subtitle a, Section 301 (a) of the Agricultural Adjustment Act of 1938 as amended by the Agricultural Acts of 1948, 1949, and 1956. See January *Agricultural Prices* for details on adjusted base price and parity price computations]

Commodity and unit	Adjusted base price	Parity price			
		September 2013	August 2014	September 2014	
	(dollars)	(dollars)	(dollars)	(dollars)	
Field crops and miscellaneous					
Hops	pound	0.318	8.58	9.56	9.55
Mustard seed	cwt	2.99	80.70	89.80	89.80
Rapeseed	cwt	2.29	63.70	68.80	68.70
Rye	bushel	0.582	15.10	17.50	17.50
Safflower	cwt	2.09	57.80	62.80	62.70
Spearmint oil	pound	1.60	42.50	48.10	48.00
Sweet potatoes	cwt	2.09	58.90	62.80	62.70
Tobacco					
Flue-cured, 11-14	pound	0.185	5.24	5.56	5.55
Fire-cured, 21-23	pound	0.266	7.56	7.99	7.99
Burley, 31	pound	0.187	5.32	5.62	5.61
Maryland, 32	pound	0.169	4.73	5.08	5.07
Dark air-cured, 35-37	pound	0.240	6.79	7.21	7.20
Pennsylvania seedleaf, 41	pound	0.182	4.98	5.47	5.46
Cigar binder, 51	pound	0.637	17.30	19.10	19.10
Noncitrus fruit					
Apples, processing ¹	ton	18.10	470.00	544.00	543.00
Apricots					
Fresh ²	ton	116.00	3,140.00	3,490.00	3,480.00
Dried (California)	ton	262.00	7,130.00	7,870.00	7,870.00
Avocados ²	ton	185.00	5,350.00	5,560.00	5,550.00
Cherries					
Sweet	ton	216.00	5,800.00	6,490.00	6,480.00
Tart	pound	0.033	0.934	0.992	0.991
Cranberry ³	barrel	4.61	132.00	139.00	138.00
Dates (California) ²	ton	162.00	4,560.00	4,870.00	4,860.00
Grapes					
Raisin variety	ton	142.00	3,770.00	4,270.00	4,260.00
Other dried	ton	65.50	1,750.00	1,970.00	1,970.00
Kiwifruit	ton	89.50	2,510.00	2,690.00	2,690.00
Nectarines, fresh (California) ²	ton	57.50	1,550.00	1,730.00	1,730.00
Olives, canning (California) ³	ton	93.80	2,480.00	2,820.00	2,820.00

See footnote(s) at end of table.

--continued

Commodity Parity Prices – United States: September 2014 with Comparisons (continued)

[Parity prices are computed under the provisions of Title III, Subtitle a, Section 301 (a) of the Agricultural Adjustment Act of 1938 as amended by the Agricultural Acts of 1948, 1949, and 1956. See January *Agricultural Prices* for details on adjusted base price and parity price computations]

Commodity and unit	Adjusted base price	Parity price		
		September 2013	August 2014	September 2014
	(dollars)	(dollars)	(dollars)	(dollars)
Noncitrus fruit - continued				
Papayas (Hawaii)pound	0.042	1.08	1.26	1.26
Peaches				
Fresh ⁴ ton	83.40	2,270.00	2,510.00	2,500.00
Dried (California) ton	47.80	1,370.00	1,440.00	1,430.00
Processing, excludes dried				
Clingstone (California) ³ ton	33.00	895.00	992.00	991.00
Pears				
Fresh ⁴ ton	56.90	1,550.00	1,710.00	1,710.00
Dried (California) ¹ ton	141.00	4,250.00	4,240.00	4,230.00
Plums (California)				
Fresh, equivalent on-tree ton	60.10	1,640.00	1,810.00	1,800.00
Prunes, dried (California) ¹ ton	152.00	4,050.00	4,570.00	4,560.00
Prunes and plums				
Fresh, excludes California ⁵ ton	62.80	1,750.00	1,890.00	1,890.00
Processing, excludes dried ¹ ton	24.50	674.00	736.00	735.00
Tree nuts ⁶				
Almondspound	0.227	5.97	6.82	6.81
Hazelnuts ton	208.00	5,410.00	6,250.00	6,240.00
Pistachiospound	0.208	5.49	6.25	6.24
Walnuts ton	203.00	5,240.00	6,100.00	6,090.00
Vegetables, fresh ⁷				
Carrots ⁸ cwt	2.66	72.80	79.90	79.90
Cauliflower ⁸ cwt	4.11	114.00	124.00	123.00
Celery ⁸ cwt	2.05	54.90	61.60	61.50
Honeydew melons cwt	1.97	55.80	59.20	59.10
Lettuce cwt	2.16	59.20	64.90	64.80
Onions ⁸ cwt	1.34	39.90	40.30	40.20
Tomatoes cwt	4.33	122.00	130.00	130.00

¹ Equivalent returns at processing plant door.

² Equivalent returns at packinghouse door.

³ Equivalent returns for bulk fruit at first delivery point.

⁴ Equivalent packinghouse-door returns for California, New York (apples only), Oregon (except peaches), and Washington. Price at point of first sale for other states.

⁵ Based on "as sold" prices for fresh fruit in all states.

⁶ Prices In-Shell basis except almonds which are shelled basis.

⁷ FOB shipping point prices.

⁸ Includes some processing.

Marketing Year for Specified Commodities

Corn for grain: September 1 to August 31 for United States, Arizona, California, Delaware, Illinois, Indiana, Iowa, Kansas, Kentucky, Maryland, Missouri, Nebraska, New Mexico, Ohio, Pennsylvania, South Dakota, Virginia, and West Virginia; July 1 to June 30 for Texas; August 1 to July 31 for Alabama, Arkansas, Florida, Georgia, Louisiana, Mississippi, North Carolina, Oklahoma, South Carolina, and Tennessee; October 1 to September 30 for Colorado, Connecticut, Idaho, Maine, Massachusetts, Michigan, Minnesota, Montana, Nevada, New Hampshire, New Jersey, New York, North Dakota, Oregon, Rhode Island, Utah, Vermont, Washington, Wisconsin, and Wyoming.

Sorghum for grain: September 1 to August 31 for United States, Arizona, Colorado, Illinois, Kansas, Missouri, Nebraska, New Mexico, and South Dakota; June 1 to May 31 for Texas; August 1 to July 31 for Arkansas, Georgia, Louisiana, Mississippi, and Oklahoma.

Soybeans: September 1 to August 31 for United States and all States except Louisiana, Mississippi, and Texas; July 1 to June 30 for Texas; August 1 to July 31 for Louisiana and Mississippi.

Austrian Winter Peas: July 1 to June 30 for United States, Idaho, Montana, and Oregon.

Dry Edible Peas: July 1 to June 30 for United States, Idaho, Montana, North Dakota, Oregon, and Washington.

Lentils: July 1 to June 30 for United States, Idaho, Montana, North Dakota, and Washington.

Dry Edible Peas Market Year Average Prices Received – States and United States: Marketing Years 2011 through 2013

[Excludes both wrinkled seed peas and Austrian winter peas]

State	2011	2012	2013
	(dollars)	(dollars)	(dollars)
Idaho	15.40	17.50	17.40
Montana	14.80	14.60	13.50
North Dakota	15.30	15.90	14.80
Oregon	16.00	17.00	16.90
Washington	15.70	17.30	16.60
United States	15.30	15.70	14.60

Austrian Winter Peas Market Year Average Prices Received – States and United States: Marketing Years 2011 through 2013

State	2011	2012	2013
	(dollars)	(dollars)	(dollars)
Idaho	20.00	19.90	24.60
Montana	20.00	21.90	19.50
Oregon	16.20	20.40	27.70
United States	19.50	20.70	23.50

Lentils Market Year Average Prices Received – States and United States: Marketing Years 2011 through 2013

State	2011	2012	2013
	(dollars)	(dollars)	(dollars)
Idaho	31.50	27.80	24.40
Montana	23.70	19.50	18.30
North Dakota	20.40	18.70	17.90
Washington	31.40	27.20	25.30
United States	25.00	20.70	19.80

Lentils Prices Received and Farm Marketings by Month – United States: Marketing Years 2011-2012 through 2013-2014

[Marketing year average (MYA) prices are weighted average prices for the United States marketing year of July - June. Monthly farm marketings, based on a sample survey, as percent of total used for calculating MYA prices]

Month	Prices received			Farm marketing percentages		
	2011-2012	2012-2013	2013-2014	2011-2012	2012-2013	2013-2014
	(dollars per cwt)	(dollars per cwt)	(dollars per cwt)	(percent)	(percent)	(percent)
July	27.30	18.50	20.30	3.0	5.1	7.9
August	24.90	18.20	19.00	6.4	9.6	9.7
September	29.10	21.20	23.70	11.3	10.3	7.4
October	28.70	22.30	23.00	12.5	10.2	9.3
November	24.60	21.30	19.50	8.7	6.5	5.8
December	24.30	18.90	19.90	6.9	8.5	7.2
January ¹	26.80	21.00	18.50	9.5	6.4	8.5
February	23.60	22.60	19.40	5.2	12.7	7.3
March	22.80	20.20	18.90	8.8	12.7	11.1
April	24.90	21.00	18.50	6.8	7.1	7.7
May	22.70	20.40	18.50	8.2	5.5	6.6
June	20.10	22.00	19.10	12.7	5.4	11.5
MYA	25.00	20.70	19.80	100.0	100.0	100.0

¹ Second year.

Dry Edible Peas Prices Received and Farm Marketings by Month – United States: Marketing Years 2011-2012 through 2013-2014

[Marketing year average (MYA) prices are weighted average prices for the United States marketing year of July - June. Monthly farm marketings, based on a sample survey, as percent of total used for calculating MYA prices]

Month	Prices received			Farm marketing percentages		
	2011-2012	2012-2013	2013-2014	2011-2012	2012-2013	2013-2014
	(dollars per cwt)	(dollars per cwt)	(dollars per cwt)	(percent)	(percent)	(percent)
July	12.90	14.80	16.50	13.0	5.4	2.7
August	14.60	14.30	14.50	21.3	20.3	18.3
September	15.30	14.50	14.30	11.7	17.0	18.7
October	16.40	15.30	15.50	10.4	10.5	11.3
November	15.90	16.50	15.90	5.7	7.5	6.2
December	15.80	16.60	14.60	3.6	7.4	9.2
January ¹	15.70	16.30	15.40	7.3	10.0	9.4
February	15.30	16.60	15.10	4.0	8.5	4.0
March	15.70	17.80	13.40	6.3	6.8	5.5
April	16.30	18.70	13.40	8.4	2.9	4.5
May	16.50	18.60	13.10	4.3	1.9	3.8
June	16.10	19.40	13.30	4.0	1.8	6.4
MYA	15.30	15.70	14.60	100.0	100.0	100.0

¹ Second year.

Austrian Winter Peas Prices Received and Farm Marketings by Month – United States: Marketing Years 2011-2012 through 2013-2014

[Marketing year average (MYA) prices are weighted average prices for the United States marketing year of July - June. Monthly farm marketings, based on a sample survey, as percent of total used for calculating MYA prices]

Month	Prices received			Farm marketing percentages		
	2011-2012	2012-2013	2013-2014	2011-2012	2012-2013	2013-2014
	(dollars per cwt)	(dollars per cwt)	(dollars per cwt)	(percent)	(percent)	(percent)
July	(S)	(S)	(S)	(S)	(S)	(S)
August	19.30	20.50	(S)	20.4	8.8	(S)
September	(S)	20.90	(S)	(S)	31.8	(S)
October	19.70	20.90	22.60	26.8	12.2	17.1
November	(S)	(S)	22.80	(S)	(S)	18.7
December	19.10	20.60	(S)	5.7	7.9	(S)
January ¹	19.90	21.00	(S)	18.9	13.5	(S)
February	19.70	21.30	(S)	9.2	15.0	(S)
March	(S)	(S)	(S)	(S)	(S)	(S)
April	(S)	(S)	(S)	(S)	(S)	(S)
May	(S)	(S)	(S)	(S)	(S)	(S)
June	(S)	17.80	(S)	(S)	7.0	(S)
MYA	19.50	20.70	23.50	100.0	100.0	100.0

(S) Insufficient number of reports to establish an estimate.

¹ Second year.

Corn Prices Received and Farm Marketings by Month – United States: Marketing Years 2011-2012 through 2013-2014

[Marketing year average (MYA) prices are weighted average prices for the United States marketing year of September - August. Monthly farm marketings, based on a sample survey, as percent of total used for calculating MYA prices]

Month	Prices received			Farm marketing percentages		
	2011-2012	2012-2013	2013-2014	2011-2012	2012-2013	2013-2014
	(dollars per bushel)	(dollars per bushel)	(dollars per bushel)	(percent)	(percent)	(percent)
September	6.38	6.89	5.40	5.0	11.1	5.1
October	5.73	6.78	4.63	13.9	15.8	11.6
November	5.83	7.01	4.37	12.6	9.4	12.3
December	5.86	6.87	4.41	9.1	7.5	8.8
January ¹	6.07	6.96	4.42	15.2	14.0	14.2
February	6.28	7.04	4.35	8.1	6.2	9.4
March	6.35	7.13	4.52	8.8	8.7	9.1
April	6.34	6.97	4.71	5.3	4.9	7.3
May	6.34	6.97	4.71	5.1	5.2	4.8
June	6.37	6.97	4.50	5.9	5.8	5.7
July	7.14	6.79	4.06	5.7	6.0	5.9
August	7.63	6.21	3.63	5.3	5.4	5.8
MYA	6.22	6.89	4.46	100.0	100.0	100.0

¹ Second year.

Sorghum Grain Market Year Average Prices Received – States and United States: Marketing Years 2011 through 2013

State	2011	2012	2013
	(dollars per cwt)	(dollars per cwt)	(dollars per cwt)
Arizona	12.50	12.80	10.10
Arkansas	10.20	11.10	8.85
Colorado	10.70	12.50	7.66
Georgia	11.70	12.70	9.52
Illinois	10.50	12.00	7.42
Kansas	10.70	12.00	7.46
Louisiana	10.20	11.50	8.70
Mississippi	10.20	10.90	8.62
Missouri	11.00	12.30	8.05
Nebraska	10.50	12.10	7.38
New Mexico	10.60	13.30	5.76
Oklahoma	10.80	12.00	7.49
South Dakota	10.20	11.90	6.57
Texas	10.40	11.20	8.33
United States	10.70	11.30	7.64

Sorghum Grain Farm Marketing Percent by Month – States and United States: Marketing Years 2012-2013 and 2013-2014

[Monthly farm marketings, based on a sample survey, as a percent of total used for calculating marketing year average prices. Blank cells indicate month is outside State's designated marketing year]

State and Marketing Year	Jun	Jul	Aug	Sep	Oct	Nov	Dec	Jan	Feb	Mar	Apr	May	Jun	Jul	Aug
	(%)	(%)	(%)	(%)	(%)	(%)	(%)	(%)	(%)	(%)	(%)	(%)	(%)	(%)	(%)
Arkansas															
2012-2013			49	30	4	2	4	5	1	1	3	-	1	-	
2013-2014			2	39	30	9	8	6	3	1	1	1	-	-	
Illinois															
2012-2013				4	2	28	9	15	6	10	20	2	3	1	-
2013-2014				1	29	49	5	5	-	5	4	2	-	-	-
Kansas															
2012-2013				2	12	25	9	17	6	12	4	4	4	3	2
2013-2014				1	8	19	19	22	10	8	6	3	2	1	1
Louisiana															
2012-2013			65	20	6	1	1	4	2	-	-	-	-	1	
2013-2014			62	8	15	2	3	-	7	2	1	-	-	-	
Missouri															
2012-2013				7	9	31	11	12	7	6	3	4	4	4	2
2013-2014				2	11	18	16	20	13	10	4	4	-	1	1
Nebraska															
2012-2013				6	15	13	9	17	8	10	6	6	5	2	3
2013-2014				1	16	18	13	14	14	10	5	2	4	2	1
Oklahoma															
2012-2013			19	7	10	19	9	12	5	8	2	3	4	2	
2013-2014			1	11	19	14	19	18	6	4	4	2	1	1	
Texas															
2012-2013	7	39	18	4	10	9	4	5	1	2	-	1			
2013-2014	4	12	13	11	5	12	16	14	5	3	3	2			
United States															
2012-2013				6.4	12.2	17.7	6.5	11.1	3.5	6.5	2.5	2.0	5.2	10.6	15.8
2013-2014				6.1	8.5	15.4	16.8	17.3	7.7	5.8	4.7	2.4	4.0	5.9	5.4

- Represents zero.

Sorghum Grain Prices Received by Month – States and United States: Marketing Years 2012-2013 and 2013-2014

State	2012-2013							
	June	July	August	September	October	November	December	January ¹
	(dollars per cwt)	(dollars per cwt)	(dollars per cwt)	(dollars per cwt)	(dollars per cwt)	(dollars per cwt)	(dollars per cwt)	(dollars per cwt)
Arkansas	(S)	(D)	11.10	11.00	10.10	(D)	(D)	11.00
Illinois	(D)	(S)	(D)	12.80	(D)	11.40	11.40	11.80
Kansas	10.40	12.50	13.30	12.40	12.20	12.30	12.10	12.20
Louisiana	(S)	11.10	11.60	11.30	10.90	(D)	(D)	(D)
Missouri	(D)	(S)	12.90	11.80	11.90	12.40	12.30	11.90
Nebraska	10.90	12.00	12.20	11.70	12.40	12.20	11.70	12.20
Oklahoma	11.10	12.20	12.80	11.80	12.00	12.10	11.70	11.80
Texas	9.23	10.50	10.90	11.50	12.70	12.80	12.50	11.70
United States	9.56	10.60	11.30	11.50	12.40	12.40	12.20	12.00
State	2013-2014							
	June	July	August	September	October	November	December	January ¹
	(dollars per cwt)	(dollars per cwt)	(dollars per cwt)	(dollars per cwt)	(dollars per cwt)	(dollars per cwt)	(dollars per cwt)	(dollars per cwt)
Arkansas	(D)	(S)	(D)	(D)	8.82	9.05	(D)	(D)
Illinois	11.90	(D)	(D)	(D)	6.92	7.43	7.49	7.15
Kansas	11.80	10.60	9.88	8.70	7.40	7.23	7.31	7.34
Louisiana	(D)	(D)	8.85	8.84	8.77	(D)	(D)	(S)
Missouri	(D)	12.50	11.90	8.08	8.12	7.40	8.14	8.12
Nebraska	12.40	11.50	10.20	8.45	7.38	7.16	7.18	7.06
Oklahoma	11.40	10.80	8.81	7.77	7.50	7.33	7.27	7.25
Texas	(D)	9.48	8.68	7.88	7.87	7.63	7.75	7.90
United States	11.10	9.63	8.82	8.17	7.73	7.38	7.49	7.52

See footnote(s) at end of table.

--continued

Sorghum Grain Prices Received by Month – States and United States: Marketing Years 2012-2013 and 2013-2014 (continued)

State	2012-2013						
	February	March	April	May	June	July	August
	(dollars per cwt)	(dollars per cwt)	(dollars per cwt)	(dollars per cwt)	(dollars per cwt)	(dollars per cwt)	(dollars per cwt)
Arkansas	(D)	(D)	(D)	(D)	(D)	(S)	(D)
Illinois	12.30	12.40	12.90	(D)	11.90	(D)	(D)
Kansas	12.10	12.20	11.20	11.30	11.80	10.60	9.88
Louisiana	(D)	(D)	(D)	(D)	(D)	(D)	8.85
Missouri	12.80	12.70	11.90	(D)	(D)	12.50	11.90
Nebraska	12.20	12.50	(D)	12.00	12.40	11.50	10.20
Oklahoma	11.70	12.00	11.20	11.10	11.40	10.80	8.81
Texas	12.20	11.80	10.70	11.50	(D)	9.48	8.68
United States	12.10	12.20	11.60	11.40	11.10	9.63	8.82
State	2013-2014						
	February	March	April	May	June	July	August
	(dollars per cwt)	(dollars per cwt)	(dollars per cwt)	(dollars per cwt)	(dollars per cwt)	(dollars per cwt)	(dollars per cwt)
Arkansas	(D)	(D)	(D)	(D)	(D)	(S)	7.22
Illinois	(D)	8.23	9.22	9.00	(S)	(S)	(D)
Kansas	7.61	8.01	8.19	8.18	7.59	6.36	5.71
Louisiana	7.56	(D)	(D)	(D)	(S)	(D)	7.92
Missouri	7.96	8.40	8.93	9.00	(D)	7.30	7.16
Nebraska	7.50	7.82	8.14	8.15	7.51	6.71	6.11
Oklahoma	7.58	8.23	8.43	8.04	7.13	6.39	5.95
Texas	7.74	8.96	9.65	8.21	7.51	7.53	7.13
United States	7.65	8.24	8.55	8.22	7.53	7.40	7.13

(D) Withheld to avoid disclosing data for individual operations.

(S) Insufficient number of reports to establish an estimate.

¹ Second year.

Soybean Market Year Average Prices Received – States and United States: Marketing Years 2011 through 2013

State	2011	2012	2013
	(dollars per bushel)	(dollars per bushel)	(dollars per bushel)
Alabama	12.00	14.60	12.90
Arkansas	12.30	14.30	13.10
Delaware	12.20	14.40	12.40
Florida	11.00	14.00	11.80
Georgia	12.10	14.60	13.30
Illinois	12.80	14.60	13.20
Indiana	12.70	14.70	13.20
Iowa	12.60	14.40	13.10
Kansas	12.10	14.30	12.80
Kentucky	12.40	14.50	13.10
Louisiana	12.00	14.70	13.40
Maryland	12.10	14.20	12.40
Michigan	12.10	14.00	12.90
Minnesota	12.40	14.30	12.90
Mississippi	12.00	14.50	13.20
Missouri	12.50	14.50	13.10
Nebraska	12.00	14.10	12.70
New Jersey	12.10	13.90	12.40
New York	12.30	13.60	12.80
North Carolina	12.10	14.00	13.10
North Dakota	11.90	14.00	12.40
Ohio	13.00	14.60	13.00
Oklahoma	11.90	14.40	12.90
Pennsylvania	12.50	14.20	13.00
South Carolina	12.00	14.50	13.30
South Dakota	12.20	14.20	12.50
Tennessee	12.20	14.60	13.00
Texas	12.00	14.60	12.60
Virginia	12.10	14.00	13.00
West Virginia	12.40	14.30	12.90
Wisconsin	12.40	14.00	12.80
United States	12.50	14.40	13.00

Soybean Prices Received by Month – States and United States: Marketing Years 2012-2013 and 2013-2014

State	2012-2013						
	August (dollars per bushel)	September (dollars per bushel)	October (dollars per bushel)	November (dollars per bushel)	December (dollars per bushel)	January ¹ (dollars per bushel)	February (dollars per bushel)
Arkansas	14.70	14.10	14.30	14.50	14.60	14.50	14.90
Illinois	16.70	15.20	14.40	14.70	14.30	14.30	14.70
Indiana	16.40	14.80	14.50	14.60	14.50	14.60	14.80
Iowa	16.80	14.40	14.10	14.30	14.30	14.10	14.60
Kansas	16.60	14.40	14.30	14.10	14.10	14.00	14.50
Kentucky	16.40	14.80	14.30	14.40	14.50	14.50	14.60
Louisiana	13.90	15.00	14.80	14.50	14.50	15.40	14.70
Michigan	15.90	13.60	14.00	13.80	14.10	13.50	13.60
Minnesota	16.60	14.20	14.10	14.10	14.10	14.20	14.40
Mississippi	(D)	14.30	13.90	14.40	14.80	14.70	15.90
Missouri	16.90	15.30	14.40	14.30	14.30	14.30	14.80
Nebraska	16.60	13.70	14.00	14.00	14.20	13.90	14.40
North Carolina	17.00	16.20	14.30	13.80	13.70	14.00	14.20
North Dakota	15.40	14.20	13.90	13.90	14.10	13.80	14.10
Ohio	16.50	14.80	14.30	14.30	14.50	14.60	14.80
South Dakota	16.00	14.20	13.80	14.20	14.20	13.90	14.40
Tennessee	15.00	14.30	14.50	14.50	14.90	14.50	15.10
Wisconsin	16.60	13.50	13.90	14.10	14.00	13.90	14.40
United States	16.20	14.30	14.20	14.30	14.30	14.30	14.60

State	2013-2014						
	August (dollars per bushel)	September (dollars per bushel)	October (dollars per bushel)	November (dollars per bushel)	December (dollars per bushel)	January ¹ (dollars per bushel)	February (dollars per bushel)
Arkansas	(D)	13.30	13.00	13.00	13.20	13.30	13.50
Illinois	14.20	13.50	12.80	12.80	13.20	13.10	13.40
Indiana	14.90	13.40	12.60	12.70	13.10	13.20	13.40
Iowa	14.20	13.90	12.50	12.70	13.00	12.80	13.10
Kansas	13.90	13.10	12.40	12.50	12.80	12.60	13.20
Kentucky	13.60	13.30	12.60	13.00	13.20	13.20	13.50
Louisiana	(D)	13.40	13.20	13.20	(D)	(D)	13.80
Michigan	14.40	13.00	12.40	12.50	13.00	12.80	13.30
Minnesota	14.30	13.30	12.50	12.60	12.70	12.60	12.90
Mississippi	12.70	13.20	13.10	13.00	13.20	13.00	13.60
Missouri	13.70	13.50	12.60	12.80	13.10	13.10	13.50
Nebraska	13.50	13.00	12.40	12.50	12.80	12.70	13.00
North Carolina	14.20	13.20	12.80	12.90	12.90	12.90	13.40
North Dakota	13.10	12.60	12.30	12.20	12.60	12.40	12.50
Ohio	14.60	13.00	12.30	12.70	13.10	13.10	13.40
South Dakota	13.80	12.70	12.20	12.20	12.70	12.50	12.70
Tennessee	13.20	13.00	12.70	12.80	13.20	13.10	13.50
Wisconsin	14.40	12.90	12.20	12.70	13.10	12.80	13.20
United States	14.10	13.30	12.50	12.70	13.00	12.90	13.20

See footnote(s) at end of table.

--continued

Soybean Prices Received by Month – States and United States: Marketing Years 2012-2013 and 2013-2014 (continued)

State	2012-2013					
	March	April	May	June	July	August
	(dollars per bushel)	(dollars per bushel)	(dollars per bushel)	(dollars per bushel)	(dollars per bushel)	(dollars per bushel)
Arkansas	14.10	14.20	15.00	15.20	14.80	(D)
Illinois	14.70	14.60	15.10	15.50	15.50	14.20
Indiana	15.00	14.70	15.10	15.60	15.80	14.90
Iowa	14.60	14.40	14.90	15.20	15.40	14.20
Kansas	14.40	14.00	14.60	14.90	15.00	13.90
Kentucky	15.00	14.60	15.10	15.50	(D)	13.60
Louisiana	14.00	14.40	15.10	15.90	(D)	(D)
Michigan	14.20	13.80	14.50	15.00	15.00	14.40
Minnesota	14.40	14.20	14.70	14.80	15.00	14.30
Mississippi	14.00	14.50	(D)	15.60	14.10	12.70
Missouri	14.80	14.40	14.80	15.30	15.50	13.70
Nebraska	14.40	14.10	14.70	15.00	15.10	13.50
North Carolina	14.20	14.40	15.00	15.00	14.70	14.20
North Dakota	13.90	13.50	14.00	14.40	14.30	13.10
Ohio	14.80	14.50	14.90	15.30	15.70	14.60
South Dakota	14.30	14.00	14.60	14.70	14.90	13.80
Tennessee	14.90	14.60	15.00	15.50	(D)	13.20
Wisconsin	14.40	14.10	14.60	14.90	15.10	14.40
United States	14.60	14.40	14.90	15.10	15.30	14.10
State	2013-2014					
	March	April	May	June	July	August
	(dollars per bushel)	(dollars per bushel)	(dollars per bushel)	(dollars per bushel)	(dollars per bushel)	(dollars per bushel)
Arkansas	14.00	14.60	14.30	15.00	13.10	12.40
Illinois	13.80	14.20	14.30	14.60	13.30	12.50
Indiana	13.90	14.60	14.80	14.70	13.70	12.90
Iowa	13.70	14.30	14.70	14.40	13.00	12.40
Kansas	13.50	14.40	14.50	14.40	13.00	13.10
Kentucky	13.80	14.40	14.80	14.60	13.30	12.70
Louisiana	13.70	14.80	13.00	(D)	13.40	11.90
Michigan	13.80	14.50	14.90	14.40	13.00	12.40
Minnesota	13.30	14.40	14.00	14.20	13.00	12.60
Mississippi	14.00	15.50	14.60	(D)	(D)	11.90
Missouri	14.00	14.60	14.80	14.50	13.00	12.50
Nebraska	13.70	14.20	14.50	14.20	13.00	12.00
North Carolina	14.10	14.70	15.00	14.50	13.30	13.10
North Dakota	12.70	13.10	13.20	12.70	11.70	10.70
Ohio	14.10	14.50	15.00	14.80	13.30	13.10
South Dakota	13.10	13.70	14.00	13.90	12.70	11.80
Tennessee	13.90	14.50	14.40	14.50	12.80	11.90
Wisconsin	13.40	14.00	14.70	14.40	13.40	12.50
United States	13.70	14.30	14.40	14.30	13.10	12.40

(D) Withheld to avoid disclosing data for individual operations.

¹ Second year.

Soybean Farm Marketing Percent by Month – States and United States: Marketing Years 2012-2013 and 2013-2014

[Monthly farm marketings, based on a sample survey, as a percent of total used for calculating marketing year average prices. Blank cells indicate month is outside State's designated marketing year]

State and Marketing Year	Aug	Sep	Oct	Nov	Dec	Jan	Feb	Mar	Apr	May	Jun	Jul	Aug
	(%)	(%)	(%)	(%)	(%)	(%)	(%)	(%)	(%)	(%)	(%)	(%)	(%)
Arkansas													
2012-2013		16	36	17	13	8	3	1	1	1	-	1	3
2013-2014		9	36	30	12	8	2	1	-	-	-	1	1
Illinois													
2012-2013		4	20	9	10	23	9	4	5	7	3	4	2
2013-2014		3	21	10	9	27	10	7	5	3	2	2	1
Indiana													
2012-2013		6	31	8	7	15	7	5	5	6	3	4	3
2013-2014		8	23	10	9	19	10	6	4	2	3	3	3
Iowa													
2012-2013		11	20	9	5	12	7	8	6	9	5	5	3
2013-2014		5	27	10	8	12	11	7	6	3	4	4	3
Kansas													
2012-2013		4	28	11	10	17	7	5	5	5	3	3	2
2013-2014		4	31	20	11	13	10	4	3	1	1	1	1
Kentucky													
2012-2013		4	16	13	9	36	6	5	3	4	2	1	1
2013-2014		1	14	23	17	29	7	4	1	1	1	1	1
Louisiana													
2012-2013	14	29	22	8	14	9	2	1	1	-	-	-	-
2013-2014	3	27	44	8	10	5	2	-	-	-	1	-	-
Michigan													
2012-2013		7	40	11	5	11	6	3	3	5	4	3	2
2013-2014		3	32	20	8	12	8	4	4	3	3	1	2
Minnesota													
2012-2013		24	14	4	7	13	6	5	5	6	6	8	2
2013-2014		5	27	11	12	12	9	8	4	3	4	3	2
Mississippi													
2012-2013	3	24	17	7	33	7	5	1	1	1	1	-	-
2013-2014	1	15	22	12	40	6	2	1	-	-	-	1	-
Missouri													
2012-2013		3	23	15	8	15	7	6	6	7	5	3	2
2013-2014		2	19	25	14	15	8	6	4	2	2	2	1
Nebraska													
2012-2013		14	29	5	12	14	6	5	3	5	3	3	1
2013-2014		5	34	11	10	20	9	4	2	1	1	2	1
North Carolina													
2012-2013		1	7	27	19	21	6	6	3	3	2	2	3
2013-2014		1	11	39	13	18	7	4	3	1	1	1	1
North Dakota													
2012-2013		23	14	6	15	16	7	4	3	3	3	4	2
2013-2014		3	22	18	15	16	9	5	3	3	2	3	1
Ohio													
2012-2013		5	24	8	9	23	8	5	5	5	3	3	2
2013-2014		12	32	11	6	12	9	6	5	2	1	2	2
South Dakota													
2012-2013		23	14	4	11	12	9	4	4	5	4	7	3
2013-2014		5	32	11	9	17	10	5	3	2	2	2	2
Tennessee													
2012-2013		8	27	23	11	16	6	2	2	2	1	1	1
2013-2014		3	26	30	10	21	3	2	1	1	1	1	1
Wisconsin													
2012-2013		14	37	7	4	12	6	5	3	5	3	3	1
2013-2014		2	27	30	10	12	8	3	2	2	2	1	1
United States													
2012-2013		11.7	22.3	8.7	9.3	15.9	7.1	5.0	4.3	5.9	3.6	3.9	2.3
2013-2014		5.7	26.8	14.2	11.0	16.3	8.5	5.3	3.7	2.2	2.2	2.2	1.9

- Represents zero.

Reliability of Prices Received Estimates

Definition: Prices received represent sales from producers to first buyers. They include all grades and qualities. The average commodity price from the survey multiplied by the total quantity marketed theoretically should give the total cash receipts for the commodity.

Survey procedures: Primary sales data used to determine grain prices were obtained from probability samples of about 1900 mills and elevators. These procedures ensure that virtually all grain moving into commercial channels has a chance of being included in the survey. Generally, States surveyed account for 90 percent or more of total United States production. Livestock prices are obtained from packers, stockyards, auctions, dealers, and market check data from AMS-USDA, private marketing organizations, and state commodity groups and agencies. Inter-farm sales of grain and livestock are not included since they represent very small percentages of the total sales. Grain marketed for seed is also excluded. Fruit and vegetable prices are obtained from sample surveys and market check data from AMS-USDA, private marketing organizations, state agencies, and universities.

Summary and estimation procedures: Survey quantities sold are expanded by strata to state levels and used to weight average strata prices to a state average. State prices are then weighted to a United States price based on expanded sales. Recommendations are prepared by the Regional Field Offices and reviewed by the Agricultural Statistics Board in Washington, D.C. State recommendations are reviewed for reasonableness with survey data, other States, and recent historic estimates.

Revisions: For most items, the current month's preliminary price represents a 3-5 day period around the 15th of the month. Previous month's prices represent actual dollars received for quantities sold during the entire month. Revisions are published in monthly issues of *Agricultural Prices*.

Reliability: United States price estimates based on probability surveys generally have a sampling error of less than one percent for the major commodities such as corn, wheat, soybeans, cotton, and rice. Current methods of summarization for non-probability commodities are not designed directly to calculate sampling errors. However, analytical measures approximate the United States relative sampling errors at around five percent. Any non-sampling errors are attributed to such things as the inability to obtain correct information, differences in interpreting questions or definitions, mistakes in coding or processing the data, etc. Efforts are made at each step in the survey process to minimize these non-sampling errors.

After the Council on Food, Agricultural and Resource Economics (C-FARE) 2009 program review which included changes in farm production practices, plans were implemented to make necessary program improvements in the agricultural price program. The index group structure for prices received was modified to maintain a more universal structure and consistency with the required 1910-1914 series. Modifications implemented January 2014 include the following:

- Update the current 1990-1992 base reference period to 2011,
- Link the 1910-1914 series to the updated base reference period, 2011,
- Create index groups used universally by researchers, data users, and policymakers,
- Re-classify agricultural commodities into the index groups,
- Expand the commodity coverage for vegetable, melon, non-citrus, and tree nuts,
- Update monthly market weights, and
- Adjust (normalization) current five year moving average cash receipts and farm input cost weights.

Prices Paid by Farmers

The September Index of Prices Paid for Commodities and Services, Interest, Taxes, and Farm Wage Rates (PPITW) at 111 (2011=100), unchanged from August 2014 but up 3.7 percent from September 2013.

Production index: The September index, at 113, was unchanged from last month but increased 4.6 percent from last year. Lower prices in September for complete feeds, feeder pigs, hay & forages, and feed grains offset higher prices for feeder cattle, potash & phosphate, LP gas, and herbicides.

Feed: The September index, at 107, decreased 2.7 percent from August and decreased 10 percent from last September. Since August, lower prices were reported for complete feeds, hay & forages, feed grains, supplements, and concentrates.

Livestock and poultry: The September index, at 162, increased 1.3 percent from last month and increased 46 percent from last year. Since August, higher prices for feeder cattle more than offset lower prices for feeder pigs. The September feeder cattle price, at \$234.00 per cwt, is up \$7.00 per cwt from the August price. September feeder pigs averaged \$199.00 per cwt, down \$31.00 per cwt from August.

Fertilizer: The September index, at 95, is unchanged from August but 5.6 percent above September a year ago. Since August, higher prices for potash & phosphate offset lower prices for nitrogen and mixed fertilizer.

Chemicals: The September index, at 110, was unchanged from August but increased 0.9 percent from last September. Compared with last month, higher prices were reported for herbicides, insecticides, and fungicides/other.

Fuels: The September index, at 99, is unchanged from a month earlier but 2.0 percent below September 2013. Compared with last month, prices are higher for LP gas but lower for diesel and gasoline.

Machinery: The September index, at 111, was unchanged from August but is 2.8 percent above last September. Compared with last month, prices are slightly higher for self-propelled machinery.

Consumer price index: The August 2014 Consumer Price Index, as issued by the Bureau of Labor Statistics, for all urban consumers (CPI-U) decreased 0.2 percent before seasonal adjustment to a level of 237.852 (1982-1984=100). The July index is 238.250. For the 12 month period ending in August, the overall index increased 1.7 percent.

Prices Paid Indexes and Related Parity Ratios – United States: September 2014 with Comparisons

[Revised historical price indexes for months not shown are available at www.nass.usda.gov]

Indexes and ratios	1910-1914 Base			2011 Base		
	September 2013	August 2014	September 2014	September 2013	August 2014	September 2014
	(percent)	(percent)	(percent)	(percent)	(percent)	(percent)
Prices paid by farmers for commodities, services, interest, taxes, and wage rates (PPITW)	2884	3013	3002	107	111	111
Production	2242	2360	2349	108	113	113
Feed	1312	1216	1174	119	110	107
Livestock and poultry	2188	3150	3203	111	160	162
Seeds	3643	3752	3752	111	114	114
Fertilizer	1085	1147	1139	90	95	95
Chemicals	976	984	988	109	110	110
Fuels	2829	2767	2763	101	99	99
Supplies and repairs	1225	1249	1250	104	106	106
Autos and trucks	3178	3204	3205	103	104	104
Machinery	6606	6804	6805	108	111	111
Building materials	2437	2495	2503	105	107	108
Services and rent	2239	2302	2300	(NA)	(NA)	(NA)
Services	(NA)	(NA)	(NA)	106	110	109
Rent	(NA)	(NA)	(NA)	104	107	107
Interest ¹	3572	3684	3684	98	101	101
Taxes ²	6137	6233	6233	103	105	105
Wage rates	7474	7679	7679	104	107	107
Production, interest, taxes, and wage rates (PITW)	3016	3166	3153	107	112	112
Family living-CPI ³	2224	2259	2256	104	106	106
Ratio (received/paid)	(NA)	(NA)	(NA)	96	98	95
Parity ratio ⁴	37	37	37	(NA)	(NA)	(NA)
Parity ratio adjusted ⁵	38	38	38	(NA)	(NA)	(NA)
PPITW adjusted for productivity ⁶	1404	1422	1419	(NA)	(NA)	(NA)
Crop sector (PPITW)	(NA)	(NA)	(NA)	104	107	107
Livestock sector (PPITW)	(NA)	(NA)	(NA)	109	116	115
Farm sector (production)	(NA)	(NA)	(NA)	115	125	124
Non-farm sector (production)	(NA)	(NA)	(NA)	103	106	106

(NA) Not available.

¹ Interest per acre on farm real estate debt and interest rate on farm non-real estate debt.

² Farm real estate taxes payable per acre.

³ Bureau of Labor Statistics, Consumer Price Index for all urban consumers (CPI-U), for the previous month converted by the USDA.

⁴ Ratio of index of prices received to PPITW (1910-1914=100).

⁵ Based on estimated cash receipts, from marketings and government payments, the preliminary adjustment factor is 1.028 for 2014 and the revised factor is 1.028 for 2013.

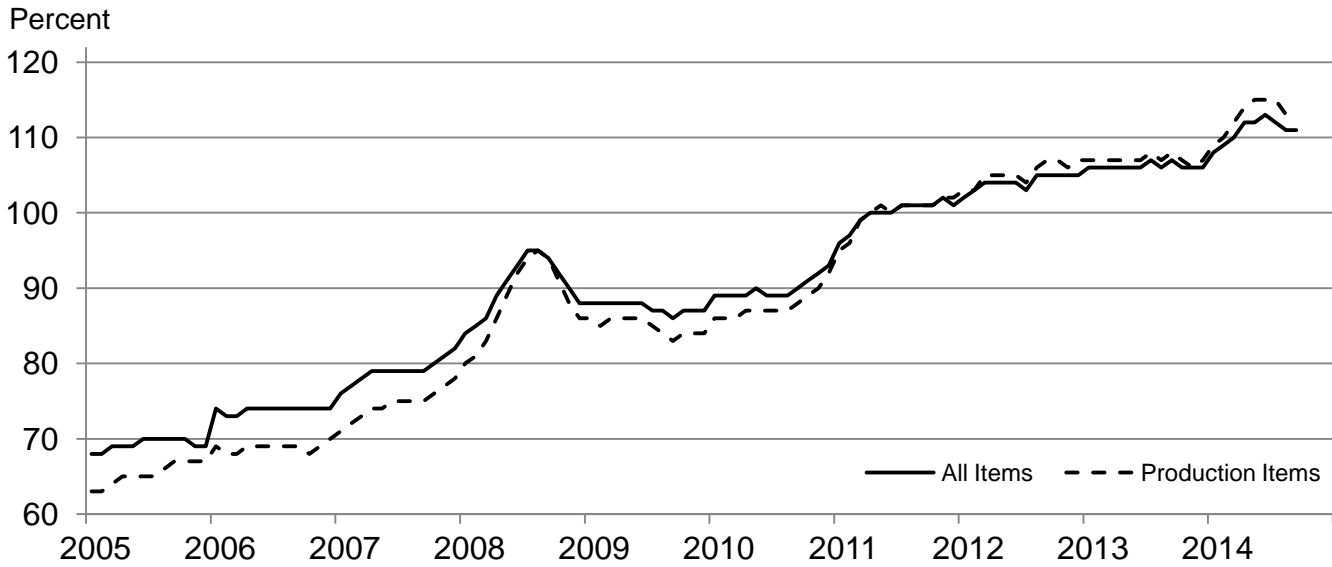
⁶ PPITW is adjusted based on productivity trend for the prior 15 years.

Prices Paid Indexes and Annual Weights for Input Components and Sub-components – United States: September 2014 with Comparisons

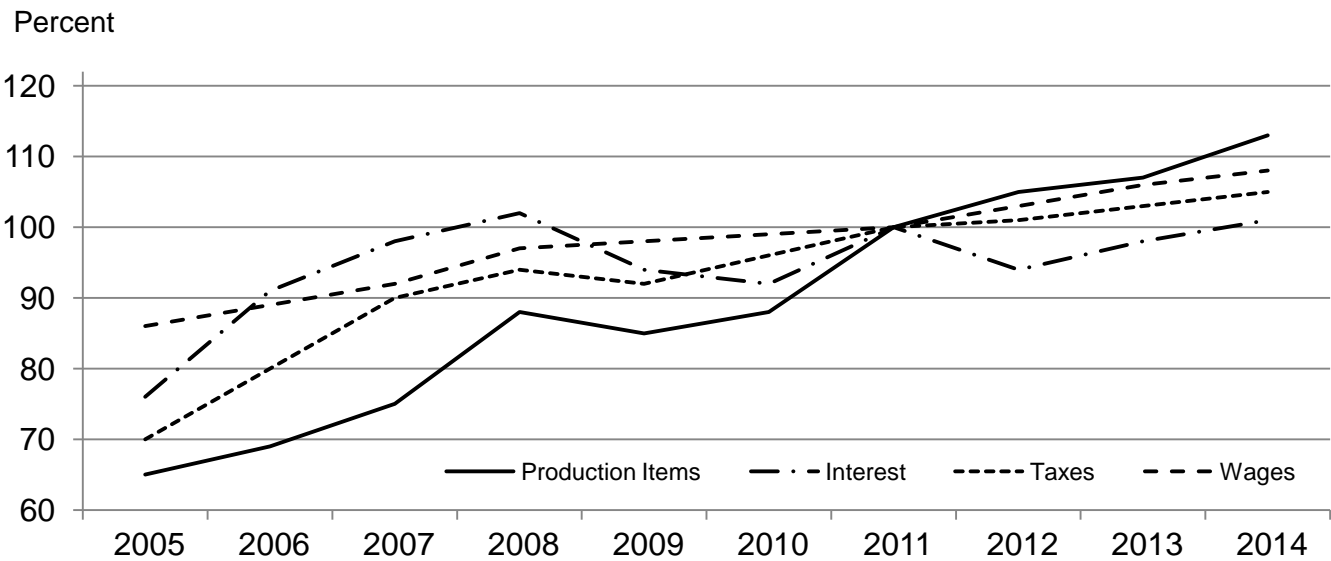
[Revised historical price indexes for months not shown are available at www.nass.usda.gov. Relative weights are a five year moving average]

	Relative weights		Indexes (2011=100)		
	2013	2014	September 2013	August 2014	September 2014
	(percent)	(percent)	(percent)	(percent)	(percent)
Production items	73.6	74.1	108	113	113
Feed	14.6	15.5	119	110	107
Feed grains	2.1	2.2	89	64	59
Complete feeds	7.2	7.6	123	119	114
Hay and forages	1.8	1.9	111	116	111
Concentrates	2.3	2.5	142	123	123
Supplements	1.2	1.3	114	107	106
Livestock and poultry	8.5	8.5	111	160	162
Feeder cattle	6.7	6.6	114	165	171
Feeder pigs	0.7	0.7	103	164	142
Milk cow replacements	0.7	0.7	96	139	139
Poultry	0.5	0.5	105	105	105
Seeds	4.8	4.9	111	114	114
Field crops	4.3	4.4	110	113	113
Grasses and legumes	0.4	0.5	120	123	123
Fertilizer	6.3	6.2	90	95	95
Mixed fertilizer	2.8	2.7	85	86	86
Nitrogen	2.6	2.6	95	102	99
Potash and phosphate	0.9	0.9	92	105	109
Chemicals	3.0	3.1	109	110	110
Herbicides	1.9	1.9	108	110	110
Insecticides	0.7	0.7	112	113	114
Fungicides and other	0.4	0.4	105	103	104
Fuels	4.5	4.1	101	99	99
Diesel	2.8	2.6	97	95	94
Gasoline	0.9	0.9	107	115	114
LP gas	0.8	0.7	108	94	97
Supplies and repairs	4.3	4.3	104	106	106
Supplies	1.4	1.4	104	106	106
Repairs	2.9	2.8	104	106	106
Autos and trucks	1.1	1.1	103	104	104
Autos	0.1	0.1	101	101	101
Trucks	1.0	1.0	104	105	105
Machinery	4.5	4.9	108	111	111
Tractors	1.0	1.1	106	108	108
Self-propelled	1.8	2.0	109	113	113
Other machinery	1.7	1.9	108	112	112
Building materials	3.8	3.7	105	107	108
Services	11.2	10.8	106	110	109
Custom rates	1.2	1.1	106	109	109
Other services	10.0	9.7	106	110	109
Rent	6.9	6.9	104	107	107
Cash	3.7	3.7	103	106	106
Share	3.2	3.2	105	108	108
Interest	2.9	2.6	98	101	101
Taxes	2.9	2.9	103	105	105
Wage rates	6.4	6.4	104	107	107
Family living-CPI	14.2	14.0	104	106	106

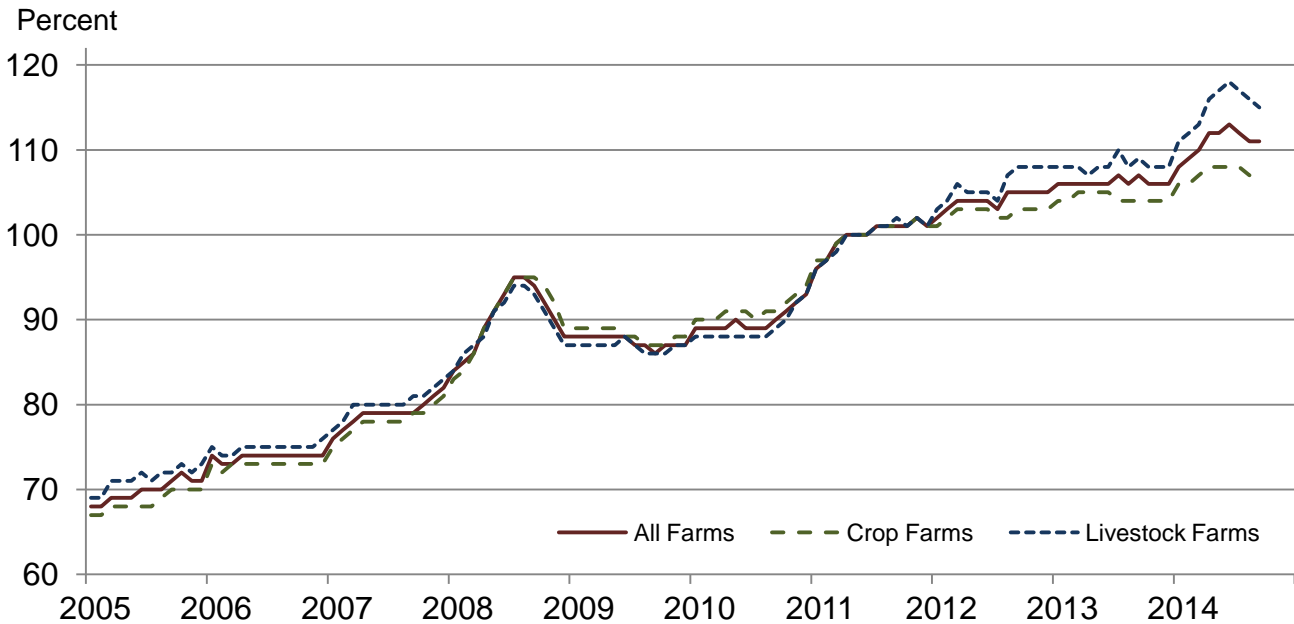
**Paid Indexes by Month,
All Items and Production Items –
United States: 2011=100**



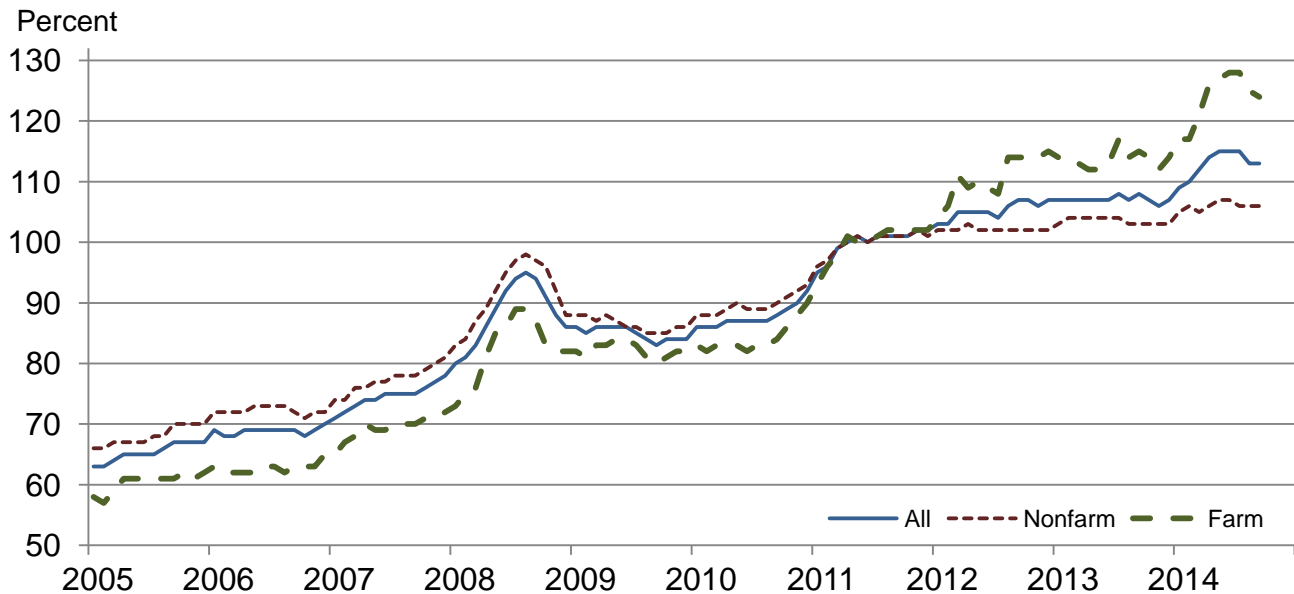
**Paid Indexes, Annual Averages,
Production Items, Interest, Taxes, and Wages –
United States: 2011=100**



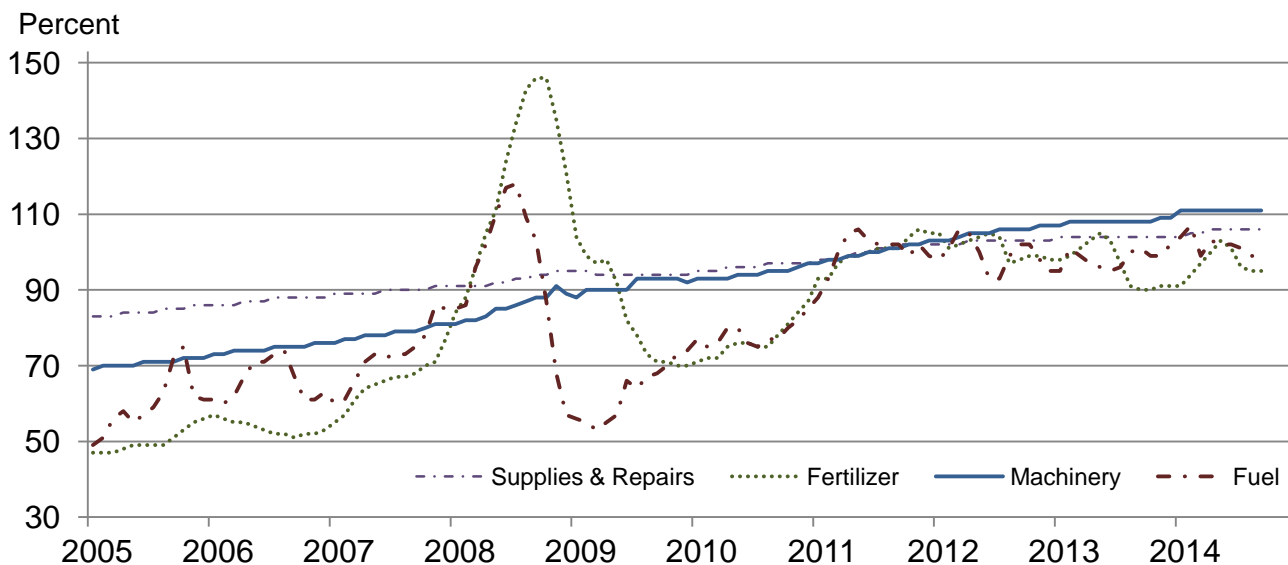
Paid Indexes by Farm Type and Month, All Items – United States: 2011=100



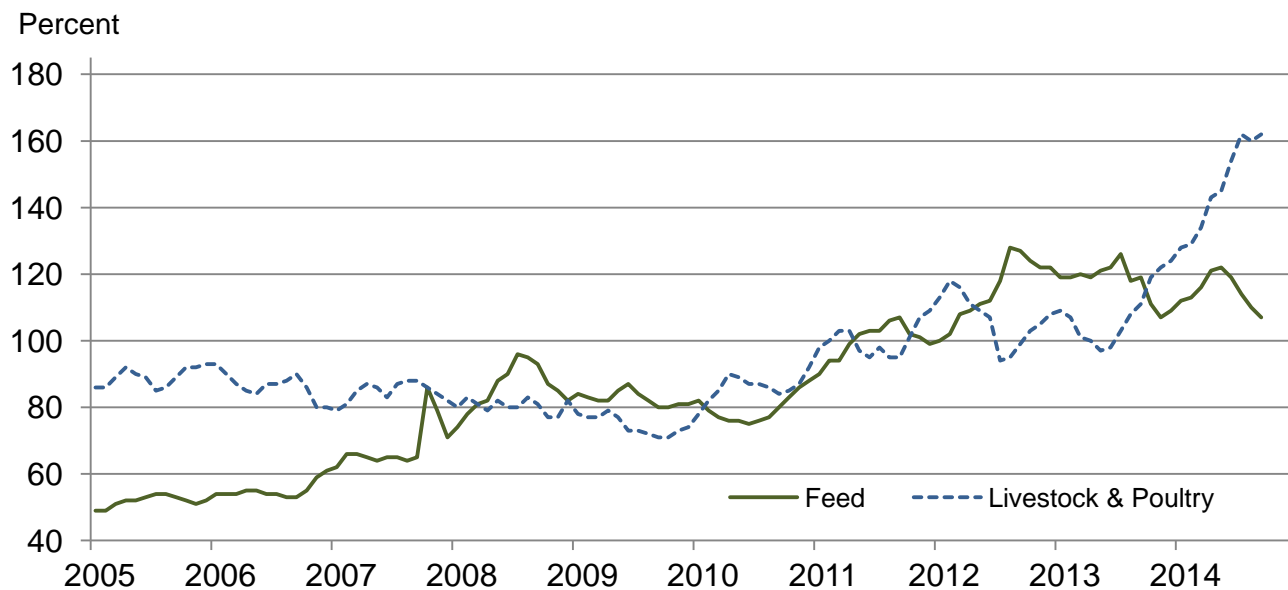
Paid Indexes by Origin and Month, All Production Items – United States: 2011=100



Paid Indexes by Non-Farm Sector and Month, Supplies & Repairs, Fertilizer, Machinery, and Fuel – United States: 2011=100



Paid Indexes by Month, Feed and Livestock & Poultry – United States: 2011=100



Feed Price Ratios – United States: September 2014 with Comparisons

Feed price ratio ¹	September 2013	August 2014	Preliminary September 2014
Broiler-feed: pounds of broiler grower feed equal in value to 1 pound of broiler, live weight ²	3.7	4.9	5.8
Market egg feed: pounds of laying feed equal in value to 1 dozen eggs ³	6.4	8.6	9.0
Hog-corn: bushels of corn equal in value to 100 pounds of hog, live weight	13.1	22.9	21.7
Milk-feed: pounds of 16% mixed dairy feed equal in value to 1 pound of whole milk ⁴	1.88	2.61	2.90
Steer and heifer-corn: bushels of corn equal in value to 100 pounds of steer & heifers, live weight	23.0	43.8	46.4
Turkey-feed: pounds of turkey grower equal in value to 1 pound of turkey, live weight ⁵	5.0	6.8	7.5

¹ Effective January 1995, prices of commercial prepared feeds are based on current United States prices received for corn, soybeans, alfalfa hay, and all wheat.

² The price of commercial prepared broiler feed is based on current United States prices received for corn and soybeans. The modeled feed uses 58 percent corn and 42 percent soybeans.

³ The price of commercial prepared layer feed is based on current United States prices received for corn and soybeans. The modeled feed uses 75 percent corn and 25 percent soybeans.

⁴ The price of commercial prepared dairy feed is based on current United States prices received for corn, soybeans, and alfalfa hay. The modeled feed uses 51 percent corn, 41 percent alfalfa hay, and 8 percent soybeans.

⁵ The price of commercial prepared turkey feed is based on current United States prices received for corn, soybeans, and wheat. The modeled feed uses 51 percent corn, 28 percent soybeans, and 21 percent wheat.

Prices Received Used to Calculate Feed Price Ratios – United States: September 2014 with Comparisons

[Price data source for livestock and poultry commodities is United States Department of Agriculture's Agricultural Marketing Service]

Item	September 2013	August 2014	Preliminary September 2014
	(dollars)	(dollars)	(dollars)
Broilers, livepound	0.550	0.610	0.660
Eggs, marketdozen	0.823	0.861	0.825
Hogs, allcwt	70.70	83.20	73.40
Milk, allcwt	20.10	24.10	25.00
Steers and heiferscwt	124.00	159.00	157.00
Turkeys, livepound	0.679	0.756	0.773
Cornbushel	5.40	3.63	3.38
Hay, alfalfaton	194.00	209.00	197.00
Soybeansbushel	13.30	12.40	11.20
Wheat, allbushel	6.80	5.98	5.72

Prices Paid for Feeder Livestock – United States: September 2014 with Comparisons

[Price data source is United States Department of Agriculture's Agricultural Marketing Service]

Item	September 2013	August 2014	Preliminary September 2014
	(dollars)	(dollars)	(dollars)
Feeder cattle and calvescwt	156.00	227.00	234.00
Feeder pigscwt	144.00	230.00	199.00

Reliability of Prices Paid Estimates

Definition: Prices paid by farmers represent the average costs of inputs purchased by farmers and ranchers to produce agricultural commodities. Conceptually, the average price when multiplied by quantity purchased should equal total producer expenditures for the item.

Survey procedures: The prices paid data are obtained from establishments that sell goods and services to farmers and ranchers. Annually, about 8,500 firms are randomly selected from lists by type of item sold with an average response rate in the range of 75-80 percent. Firms are asked to report the price for the specified item "most commonly bought by farmers" or that was the "volume seller". Approximately 135 items are surveyed each March to represent all production input items purchased. The survey reference period for most items is the five business days centered at the 15th of the month. Separate prices paid surveys are conducted for agricultural chemicals, fuels, feed, fertilizer, machinery, and seed.

Summary and estimation procedures: The annual March Prices Paid Survey is summarized as a non-probability survey. Average prices reported are aggregated to the region and United States level using weights available from expenditure data and other administrative sources. Price recommendations are prepared by the Regional Field Offices and Headquarters for review by the Agricultural Statistics Board in Washington, D.C. Also, the change in price level for individual items surveyed are combined to the regional and United States levels, and are published as prices paid indexes referenced to a specific base period. Prices paid indexes for new autos and trucks, building materials, farm supplies, motor supplies, and marketing containers are updated based on price changes measured in selected Bureau of Labor Statistics (BLS) indexes.

Revisions: Any revisions are published in the monthly and in annual issues of Agricultural Prices. The basis for revision must be supported by additional data that directly affect the level of the estimate. More revisions are likely for March when separate prices paid surveys are conducted, in lieu of BLS indexes, by the USDA to measure price change.

Reliability: Current methods of summarization for the March data are not designed directly to calculate sampling errors. However, analytical measures approximate the United States relative sampling errors for major items around 10 percent. Any non-sampling errors are attributed to such things as the inability to obtain correct information, differences in interpreting questions or definitions, mistakes in coding or processing the data, etc. Efforts are made at each step in the survey process to minimize these non-sampling errors.

Program change: Effective January 2014, the National Agricultural Statistics Service modified the five-year moving weights and updated the base reference period.

As of January 2014, the 1990-1992 base reference period is updated to 2011. Five-year moving average weights are adjusted (normalized) to minimize the effects of price changes. The 1910-1914=100 price indexes, required by statute for computing parity prices, were linked forward based on the changes in the new 2011=100 indexes. The new indexes were constructed by multiplying the ratios of the current prices to the base period prices by the moving average weights.

Information Contacts

General

Troy Joshua, Chief, Environmental, Economics and Demographics Branch (202) 720-6146

Crop Prices Received

Lance Honig, Chief, Crops Branch (202) 720-2127

Anthony Prillaman, Head, Field Crops Section (202) 720-2127

Anthony Prillaman – Peanuts, Rice..... (202) 720-2127

Brent Chittenden – Oats, Rye, Wheat (202) 720-8068

Angie Considine – Cotton, Cotton Ginnings, Sorghum (202) 720-5944

Tony Dahlman – Crop Weather, Barley (202) 720-7621

Chris Hawthorn – Corn, Flaxseed, Proso Millet (202) 720-9526

James Johanson – County Estimates, Hay (202) 690-8533

Travis Thorson – Soybeans, Sunflower, Other Oilseeds..... (202) 720-7369

Jorge Garcia-Pratts, Head, Fruits, Vegetables and Special Crops Section..... (202) 720-2127

Vincent Davis – Fresh and Processing Vegetables, Onions, Strawberries..... (202) 720-2157

Fred Granja – Apples, Apricots, Cherries, Plums, Prunes, Tobacco (202) 720-9085

Lakeya Jones – Citrus, Coffee, Grapes, Sugar Crops, Tropical Fruits..... (202) 720-5412

Greg Lemmons – Berries, Cranberries, Potatoes, Sweet Potatoes (202) 720-4285

Dave Losh – Hops (360) 709-2400

Dan Norris – Austrian Winter Peas, Dry Edible Peas, Lentils, Mint, Mushrooms, Peaches, Pears,

Wrinkled Seed Peas, Dry Beans (202) 720-3250

Daphne Schaubert – Floriculture, Maple Syrup, Nursery, Tree Nuts (202) 720-4215

Livestock Prices Received

Dan Kerestes, Chief, Livestock Branch (202) 720-3570

Scott Hollis, Head, Livestock Section..... (202) 720-3570

Travis Averill – Cattle..... (202) 720-3040

Doug Bounds – Hogs (202) 720-3106

Mike Miller – Milk, Milk Cows (202) 720-3278

Alissa Cowell-Mytar – Sheep, Lambs, and Goats..... (202) 720-4751

Bruce Boess, Head, Poultry and Specialty Commodities Section..... (202) 720-3570

Heidi Gleich – Broilers (202) 720-0585

Michael Klamm – Turkeys..... (202) 690-3237

Kim Linonis – Eggs..... (202) 690-8632

Josh O’Rear – Honey (202) 690-3676

Indexes, Prices Paid, and Parity Prices

Troy Joshua, Chief, Environmental, Economics and
Demographics Branch..... (202) 720-6146

Tony Dorn, Head, Economics Section (202) 690-3223

Daryl Brinkman – Prices Received Indexes, Parity Prices..... (202) 720-8844

Chris Dickerson – Prices Received Indexes, Parity Prices..... (202) 690-1348

Joe Hagedorn – Cash Rents, Grazing Fees..... (202) 690-3231

Judy McDermott – Prices Paid Indexes, Prices Paid for Feed, Fertilizer, Chemicals, Seeds, Fuels,
Farm Supplies and Repairs, Farm Machinery, Feeder Livestock, Poultry Chicks, Feed Price Ratios..... (202) 690-3229

Access to NASS Reports

For your convenience, you may access NASS reports and products the following ways:

- All reports are available electronically, at no cost, on the NASS web site: <http://www.nass.usda.gov>
- Both national and state specific reports are available via a free e-mail subscription. To set-up this free subscription, visit <http://www.nass.usda.gov> and in the “Follow NASS” box under “Receive reports by Email,” click on “National” or “State” to select the reports you would like to receive.

For more information on NASS surveys and reports, call the NASS Agricultural Statistics Hotline at (800) 727-9540, 7:30 a.m. to 4:00 p.m. ET, or e-mail: nass@nass.usda.gov.

The U.S. Department of Agriculture (USDA) prohibits discrimination against its customers, employees, and applicants for employment on the basis of race, color, national origin, age, disability, sex, gender identity, religion, reprisal, and where applicable, political beliefs, marital status, familial or parental status, sexual orientation, or all or part of an individual's income is derived from any public assistance program, or protected genetic information in employment or in any program or activity conducted or funded by the Department. (Not all prohibited bases will apply to all programs and/or employment activities.)

If you wish to file a Civil Rights program complaint of discrimination, complete the [USDA Program Discrimination Complaint Form](#) (PDF), found online at http://www.ascr.usda.gov/complaint_filing_cust.html, or at any USDA office, or call (866) 632-9992 to request the form. You may also write a letter containing all of the information requested in the form. Send your completed complaint form or letter to us by mail at U.S. Department of Agriculture, Director, Office of Adjudication, 1400 Independence Avenue, S.W., Washington, D.C. 20250-9410, by fax (202) 690-7442 or email at program.intake@usda.gov.

Price Program Quick Stats Links

Economics and Prices

http://www.nass.usda.gov/Statistics_by_Subject/Economics_and_Prices/index.asp

January 2014 Price Program Changes

http://www.nass.usda.gov/Surveys/Guide_to_NASS_Surveys/Prices/updates.pdf