



# Cattle on Feed

ISSN: 1948-9080

---

Released February 24, 2012, by the National Agricultural Statistics Service (NASS), Agricultural Statistics Board, United States Department of Agriculture (USDA).

## United States Cattle on Feed Up 2 Percent

**Cattle and calves on feed** for slaughter market in the United States for feedlots with capacity of 1,000 or more head totaled 11.8 million head on February 1, 2012. The inventory was 2 percent above February 1, 2011.

**Placements** in feedlots during January totaled 1.85 million, 2 percent below 2011. Net placements were 1.77 million head. During January, placements of cattle and calves weighing less than 600 pounds were 445,000, 600-699 pounds were 430,000, 700-799 pounds were 525,000, and 800 pounds and greater were 447,000.

**Marketings** of fed cattle during January totaled 1.82 million, 2 percent above 2011.

**Other disappearance** totaled 81,000 during January, 42 percent above 2011.

## 2011 Cattle on Feed and Annual Size Group Estimates

**Cattle and calves on feed** for slaughter market in the United States for feedlots with capacity of 1,000 or more head represented 84.0 percent of all cattle and calves on feed in the United States on January 1, 2012, up from 82.2 on January 1, 2011.

**Marketings** of fed cattle for feedlots with capacity of 1,000 or more head during 2011 represented 87.7 percent of all cattle marketed from feedlots in the United States, up from 84.6 percent during 2010.

### *Special Note*

This report contains the 2011 monthly cattle on feed estimates for feedlots with capacity of 1,000 or more head. Also included are the United States number of feedlots, inventory, and annual marketings by size group for 2010 and 2011. Data for total United States capacity of 1,000 or more head feedlots are also published in this issue.

## Contents

Number of Cattle on Feed, Placements, Marketings, and Other Disappearance on 1,000+ Capacity Feedlots – United States: February 1, 2011 and 2012 .....	3
Number of Cattle on Feed, Placements, Marketings, and Other Disappearance on 1,000+ Capacity Feedlots – United States: January 1, 2011 and 2012 .....	3
Number on Feed by Class on 1,000+ Capacity Feedlots – United States: January 1, 2011 and 2012 .....	3
Number of Cattle on Feed on 1,000+ Capacity Feedlots by Month – States and United States: 2011 and 2012 .....	4
Cattle on Feed Inventory on 1,000+ Capacity Feedlots – United States .....	4
Number of Cattle Placed on Feed on 1,000+ Capacity Feedlots by Month – States and United States: 2011 and 2012 .....	5
Number of Cattle Placed on Feed by Weight Group on 1,000+ Capacity Feedlots by Month – States and United States: 2010 and 2012 .....	5
Number of Cattle Marketed on 1,000+ Capacity Feedlots by Month – States and United States: 2011 and 2012 .....	6
Other Disappearance on 1,000+ Capacity Feedlots by Month – States and United States: 2011 and 2012 .....	6
Number of Cattle on Feed on 1,000+ Capacity Feedlots by Month – States and United States: 2011 .....	7
Number of Cattle Placed on Feed on 1,000+ Capacity Feedlots by Month – States and United States: 2011 .....	8
Number of Cattle Placed on Feed by Weight Group on 1,000+ Capacity Feedlots by Month – States and United States: 2011 .....	9
Cattle on Feed: Number of Cattle Marketed on 1,000+ Capacity Feedlots by Month – States and United States: 2011 .....	13
Other Disappearance on 1,000+ Capacity Feedlots by Month – States and United States: 2011 .....	14
Number on Feed by Class on 1,000+ Capacity Feedlots by Quarter – States and United States: 2011 .....	15
Number of Feedlots, Inventory, and Marketings by Size of Feedlot – United States: 2010 and 2011 .....	16
Total Feedlot Capacity of 1000+ Capacity Feedlots – United States: January 1, 2011 and 2012 .....	16
Terms and Definitions of Cattle on Feed Estimates .....	17
Reliability Monthly Cattle on Feed Estimates .....	17
Information Contacts .....	18

**Number of Cattle on Feed, Placements, Marketings, and Other Disappearance on 1,000+ Capacity Feedlots – United States: February 1, 2011 and 2012**

Item	Number		Percent of previous year
	2011	2012	
	(1,000 head)	(1,000 head)	(percent)
On feed January 1 .....	11,513	11,861	103
Placed on feed during January .....	1,889	1,847	98
Fed cattle marketed during January .....	1,774	1,816	102
Other disappearance during January .....	57	81	142
On feed February 1 .....	11,571	11,811	102

**Number of Cattle on Feed, Placements, Marketings, and Other Disappearance on 1,000+ Capacity Feedlots – United States: January 1, 2011 and 2012**

Item	Number		Percent of previous year
	2011	2012	
	(1,000 head)	(1,000 head)	(percent)
On feed December 1 .....	11,620	12,055	104
Placed on feed during December .....	1,789	1,673	94
Fed cattle marketed during December .....	1,830	1,776	97
Other disappearance during December .....	66	91	138
On feed January 1 .....	11,513	11,861	103

**Number on Feed by Class on 1,000+ Capacity Feedlots – United States: January 1, 2011 and 2012**

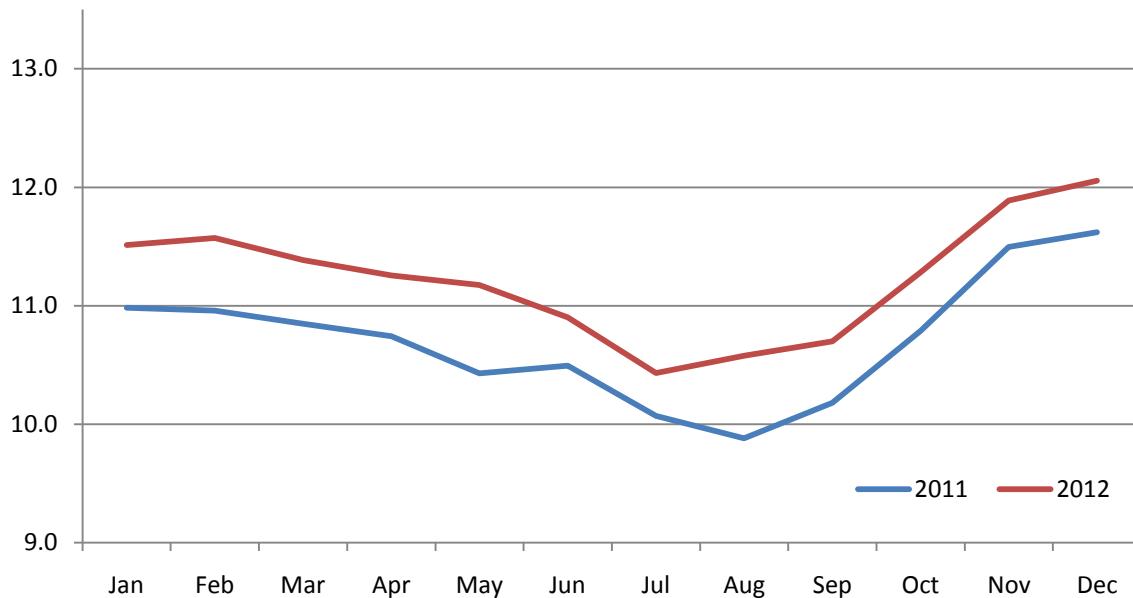
Item	Number		Percent of previous year
	2011	2012	
	(1,000 head)	(1,000 head)	(percent)
Class on feed January 1			
Steers and steer calves .....	7,178	7,281	101
Heifers and heifer calves .....	4,259	4,496	106
Cows and bulls .....	76	84	111

**Number of Cattle on Feed on 1,000+ Capacity Feedlots by Month – States and United States: 2011 and 2012**

State	February 1, 2011	January 1, 2012	February 1, 2012		
			Number	Percent of previous year	Percent of previous month
	(1,000 head)	(1,000 head)	(1,000 head)	(percent)	(percent)
Arizona .....	266	279	276	104	99
California .....	470	510	505	107	99
Colorado .....	1,070	1,150	1,140	107	99
Idaho .....	230	230	235	102	102
Iowa .....	660	620	650	98	105
Kansas .....	2,270	2,250	2,230	98	99
Nebraska .....	2,460	2,550	2,570	104	101
Oklahoma .....	375	375	355	95	95
South Dakota .....	270	260	260	96	100
Texas .....	2,870	2,940	2,900	101	99
Washington .....	207	232	227	110	98
Other States .....	423	465	463	109	100
United States .....	11,571	11,861	11,811	102	100

**Cattle on Feed Inventory on 1,000+ Capacity Feedlots – United States**

Million Head



**Number of Cattle Placed on Feed on 1,000+ Capacity Feedlots by Month – States and United States: 2011 and 2012**

State	During January 2011	During December 2011	During January 2012		
			Number	Percent of previous year	Percent of previous month
	(1,000 head)	(1,000 head)	(1,000 head)	(percent)	(percent)
Arizona .....	36	26	28	78	108
California .....	54	61	55	102	90
Colorado .....	185	160	190	103	119
Idaho .....	31	36	47	152	131
Iowa .....	93	77	103	111	134
Kansas .....	435	350	410	94	117
Nebraska .....	430	380	430	100	113
Oklahoma .....	66	45	50	76	111
South Dakota .....	51	37	45	88	122
Texas .....	430	400	400	93	100
Washington .....	31	44	35	113	80
Other States .....	47	57	54	115	95
United States .....	1,889	1,673	1,847	98	110

**Number of Cattle Placed on Feed by Weight Group on 1,000+ Capacity Feedlots by Month – States and United States: 2010 and 2012**

State	During January									
	Under 600 lbs		600-699 lbs		700-799 lbs		800+ lbs		Total	
	2011	2012	2011	2012	2011	2012	2011	2012	2011	2012
	(1,000 head)	(1,000 head)	(1,000 head)	(1,000 head)	(1,000 head)	(1,000 head)	(1,000 head)	(1,000 head)	(1,000 head)	(1,000 head)
Colorado .....	25	30	50	50	65	60	45	50	185	190
Kansas .....	55	70	120	100	165	155	95	85	435	410
Nebraska .....	70	60	105	110	130	120	125	140	430	430
Texas .....	160	150	115	85	100	105	55	60	430	400
Other States .....	150	135	85	85	84	85	90	112	409	417
United States .....	460	445	475	430	544	525	410	447	1,889	1,847

State	During December									
	Under 600 lbs		600-699 lbs		700-799 lbs		800+ lbs		Total	
	2010	2011	2010	2011	2010	2011	2010	2011	2010	2011
	(1,000 head)	(1,000 head)	(1,000 head)	(1,000 head)	(1,000 head)	(1,000 head)	(1,000 head)	(1,000 head)	(1,000 head)	(1,000 head)
Colorado .....	30	50	50	35	40	30	40	45	160	160
Kansas .....	75	75	115	100	130	105	90	70	410	350
Nebraska .....	55	60	110	90	105	100	110	130	380	380
Texas .....	180	225	120	75	80	55	40	45	420	400
Other States .....	135	140	100	85	84	70	100	88	419	383
United States .....	475	550	495	385	439	360	380	378	1,789	1,673

**Number of Cattle Marketed on 1,000+ Capacity Feedlots by Month – States and United States: 2011 and 2012**

State	During January 2011	During December 2011	During January 2012		
			Number	Percent of previous year	Percent of previous month
	(1,000 head)	(1,000 head)	(1,000 head)	(percent)	(percent)
Arizona .....	27	36	30	111	83
California .....	51	52	57	112	110
Colorado .....	190	160	190	100	119
Idaho .....	40	40	41	103	103
Iowa .....	69	63	70	101	111
Kansas .....	435	445	415	95	93
Nebraska .....	385	380	395	103	104
Oklahoma .....	64	52	68	106	131
South Dakota .....	40	37	44	110	119
Texas .....	390	420	415	106	99
Washington .....	30	45	39	130	87
Other States .....	53	46	52	98	113
United States .....	1,774	1,776	1,816	102	102

**Other Disappearance on 1,000+ Capacity Feedlots by Month – States and United States: 2011 and 2012**

State	During January 2011	During December 2011	During January 2012		
			Number	Percent of previous year	Percent of previous month
	(1,000 head)	(1,000 head)	(1,000 head)	(percent)	(percent)
Arizona .....	1	1	1	100	100
California .....	3	4	3	100	75
Colorado .....	5	10	10	200	100
Idaho .....	1	1	1	100	100
Iowa .....	4	4	3	75	75
Kansas .....	10	15	15	150	100
Nebraska .....	15	10	15	100	150
Oklahoma .....	2	3	2	100	67
South Dakota .....	1	5	1	100	20
Texas .....	10	30	25	250	83
Washington .....	2	3	1	50	33
Other States .....	3	5	4	133	80
United States .....	57	91	81	142	89

**Number of Cattle on Feed on 1,000+ Capacity Feedlots by Month – States and United States: 2011**

State	January 1	February 1	March 1	April 1	May 1	June 1
	(1,000 head)	(1,000 head)	(1,000 head)	(1,000 head)	(1,000 head)	(1,000 head)
Arizona .....	258	266	269	276	282	290
California .....	470	470	460	450	450	460
Colorado .....	1,080	1,070	1,070	1,090	1,100	1,080
Idaho .....	240	230	220	220	230	230
Iowa .....	640	660	650	650	640	610
Kansas .....	2,280	2,270	2,220	2,190	2,170	2,110
Nebraska .....	2,430	2,460	2,430	2,380	2,370	2,190
Oklahoma .....	375	375	360	355	355	355
South Dakota .....	260	270	265	265	255	235
Texas .....	2,840	2,870	2,830	2,770	2,730	2,760
Washington .....	208	207	205	207	200	193
Other States .....	432	423	407	404	393	389
United States .....	11,513	11,571	11,386	11,257	11,175	10,902
	July 1	August 1	September 1	October 1	November 1	December 1
	(1,000 head)	(1,000 head)	(1,000 head)	(1,000 head)	(1,000 head)	(1,000 head)
Arizona .....	287	287	283	280	292	290
California .....	470	480	475	490	490	505
Colorado .....	1,000	970	990	1,070	1,140	1,160
Idaho .....	215	195	195	220	225	235
Iowa .....	590	550	530	550	570	610
Kansas .....	2,030	2,180	2,210	2,320	2,400	2,360
Nebraska .....	2,020	1,980	2,010	2,210	2,470	2,560
Oklahoma .....	350	360	365	370	390	385
South Dakota .....	210	195	190	205	240	265
Texas .....	2,690	2,830	2,890	2,940	3,000	2,990
Washington .....	192	190	193	208	226	236
Other States .....	379	362	369	419	446	459
United States .....	10,433	10,579	10,700	11,282	11,889	12,055

**Number of Cattle Placed on Feed on 1,000+ Capacity Feedlots by Month – States and United States: 2011**

State	During					
	December <sup>1</sup> (1,000 head)	January (1,000 head)	February (1,000 head)	March (1,000 head)	April (1,000 head)	May (1,000 head)
Arizona .....	36	36	29	33	25	28
California .....	61	54	43	48	57	71
Colorado .....	160	185	215	215	165	140
Idaho .....	42	31	31	35	34	36
Iowa .....	93	93	71	81	69	47
Kansas .....	410	435	365	415	380	375
Nebraska .....	380	430	350	390	370	340
Oklahoma .....	55	66	60	75	76	66
South Dakota .....	45	51	45	46	31	33
Texas .....	420	430	380	490	500	560
Washington .....	36	31	31	33	28	39
Other States .....	51	47	47	53	50	75
United States .....	1,789	1,889	1,667	1,914	1,785	1,810
	During					
	June (1,000 head)	July (1,000 head)	August (1,000 head)	September (1,000 head)	October (1,000 head)	November (1,000 head)
Arizona .....	25	24	19	19	32	27
California .....	70	62	56	70	54	66
Colorado .....	105	170	230	275	230	175
Idaho .....	34	24	43	67	55	46
Iowa .....	64	55	77	115	137	143
Kansas .....	390	580	520	500	440	375
Nebraska .....	310	390	445	560	665	480
Oklahoma .....	62	86	75	88	86	60
South Dakota .....	31	22	45	51	75	70
Texas .....	500	630	620	560	560	470
Washington .....	41	42	48	54	59	54
Other States .....	63	50	68	110	99	71
United States .....	1,695	2,135	2,246	2,469	2,492	2,037

<sup>1</sup> December prior year.



**Number of Cattle Placed on Feed by Weight Group on 1,000+ Capacity Feedlots by Month – States and United States: 2011**

State	During December prior year				
	Under 600 lbs (1,000 head)	600-699 lbs (1,000 head)	700-799 lbs (1,000 head)	800+ lbs (1,000 head)	Total (1,000 head)
Colorado .....	30	50	40	40	160
Kansas .....	75	115	130	90	410
Nebraska .....	55	110	105	110	380
Texas .....	180	120	80	40	420
Other States .....	135	100	84	100	419
United States .....	475	495	439	380	1,789
	During January				
	Under 600 lbs (1,000 head)	600-699 lbs (1,000 head)	700-799 lbs (1,000 head)	800+ lbs (1,000 head)	Total (1,000 head)
Colorado .....	25	50	65	45	185
Kansas .....	55	120	165	95	435
Nebraska .....	70	105	130	125	430
Texas .....	160	115	100	55	430
Other States .....	150	85	84	90	409
United States .....	460	475	544	410	1,889
	During February				
	Under 600 lbs (1,000 head)	600-699 lbs (1,000 head)	700-799 lbs (1,000 head)	800+ lbs (1,000 head)	Total (1,000 head)
Colorado .....	30	45	65	75	215
Kansas .....	55	80	150	80	365
Nebraska .....	60	85	100	105	350
Texas .....	160	85	85	50	380
Other States .....	95	70	92	100	357
United States .....	400	365	492	410	1,667

--continued

**Number of Cattle Placed on Feed by Weight Group on 1,000+ Capacity Feedlots by Month – States and United States: 2011 (continued)**

State	During March				
	Under 600 lbs	600-699 lbs	700-799 lbs	800+ lbs	Total
	(1,000 head)	(1,000 head)	(1,000 head)	(1,000 head)	(1,000 head)
Colorado .....	40	35	70	70	215
Kansas .....	55	70	145	145	415
Nebraska .....	60	70	120	140	390
Texas .....	135	110	150	95	490
Other States .....	90	75	104	135	404
United States .....	380	360	589	585	1,914
	During April				
	Under 600 lbs	600-699 lbs	700-799 lbs	800+ lbs	Total
	(1,000 head)	(1,000 head)	(1,000 head)	(1,000 head)	(1,000 head)
Colorado .....	35	30	45	55	165
Kansas .....	60	60	130	130	380
Nebraska .....	60	60	100	150	370
Texas .....	190	95	120	95	500
Other States .....	100	65	90	115	370
United States .....	445	310	485	545	1,785
	During May				
	Under 600 lbs	600-699 lbs	700-799 lbs	800+ lbs	Total
	(1,000 head)	(1,000 head)	(1,000 head)	(1,000 head)	(1,000 head)
Colorado .....	30	25	35	50	140
Kansas .....	65	70	110	130	375
Nebraska .....	50	55	80	155	340
Texas .....	170	150	165	75	560
Other States .....	100	55	90	150	395
United States .....	415	355	480	560	1,810

--continued

**Number of Cattle Placed on Feed by Weight Group on 1,000+ Capacity Feedlots by Month – States and United States: 2011 (continued)**

State	During June				
	Under 600 lbs (1,000 head)	600-699 lbs (1,000 head)	700-799 lbs (1,000 head)	800+ lbs (1,000 head)	Total (1,000 head)
Colorado .....	20	25	30	30	105
Kansas .....	75	95	120	100	390
Nebraska .....	50	60	70	130	310
Texas .....	210	130	120	40	500
Other States .....	105	70	80	135	390
United States .....	460	380	420	435	1,695
	During July				
	Under 600 lbs (1,000 head)	600-699 lbs (1,000 head)	700-799 lbs (1,000 head)	800+ lbs (1,000 head)	Total (1,000 head)
Colorado .....	45	25	40	60	170
Kansas .....	95	115	190	180	580
Nebraska .....	60	70	100	160	390
Texas .....	300	140	95	95	630
Other States .....	120	50	70	125	365
United States .....	620	400	495	620	2,135
	During August				
	Under 600 lbs (1,000 head)	600-699 lbs (1,000 head)	700-799 lbs (1,000 head)	800+ lbs (1,000 head)	Total (1,000 head)
Colorado .....	45	30	45	110	230
Kansas .....	105	105	165	145	520
Nebraska .....	90	65	100	190	445
Texas .....	365	115	85	55	620
Other States .....	110	50	81	190	431
United States .....	715	365	476	690	2,246

--continued

**Number of Cattle Placed on Feed by Weight Group on 1,000+ Capacity Feedlots by Month – States and United States: 2011 (continued)**

State	During September				
	Under 600 lbs	600-699 lbs	700-799 lbs	800+ lbs	Total
	(1,000 head)	(1,000 head)	(1,000 head)	(1,000 head)	(1,000 head)
Colorado .....	40	25	60	150	275
Kansas .....	120	110	140	130	500
Nebraska .....	100	80	110	270	560
Texas .....	280	125	85	70	560
Other States .....	145	75	109	245	574
United States .....	685	415	504	865	2,469
	During October				
	Under 600 lbs	600-699 lbs	700-799 lbs	800+ lbs	Total
	(1,000 head)	(1,000 head)	(1,000 head)	(1,000 head)	(1,000 head)
Colorado .....	60	50	50	70	230
Kansas .....	115	120	115	90	440
Nebraska .....	185	180	110	190	665
Texas .....	250	125	115	70	560
Other States .....	230	115	97	155	597
United States .....	840	590	487	575	2,492
	During November				
	Under 600 lbs	600-699 lbs	700-799 lbs	800+ lbs	Total
	(1,000 head)	(1,000 head)	(1,000 head)	(1,000 head)	(1,000 head)
Colorado .....	55	40	30	50	175
Kansas .....	85	100	120	70	375
Nebraska .....	130	135	85	130	480
Texas .....	270	100	60	40	470
Other States .....	210	125	82	120	537
United States .....	750	500	377	410	2,037

**Cattle on Feed: Number of Cattle Marketed on 1,000+ Capacity Feedlots by Month – States and United States: 2011**

State	During					
	December <sup>1</sup> (1,000 head)	January (1,000 head)	February (1,000 head)	March (1,000 head)	April (1,000 head)	May (1,000 head)
Arizona .....	26	27	25	25	18	19
California .....	57	51	50	55	55	59
Colorado .....	165	190	210	190	150	150
Idaho .....	35	40	40	34	23	35
Iowa .....	80	69	79	78	76	73
Kansas .....	480	435	405	435	385	420
Nebraska .....	400	385	365	430	370	495
Oklahoma .....	58	64	73	78	74	65
South Dakota .....	39	40	48	44	39	50
Texas .....	400	390	405	540	530	520
Washington .....	39	30	30	28	33	44
Other States .....	51	53	61	53	54	72
United States .....	1,830	1,774	1,791	1,990	1,807	2,002
	During					
	June (1,000 head)	July (1,000 head)	August (1,000 head)	September (1,000 head)	October (1,000 head)	November (1,000 head)
Arizona .....	27	23	22	21	19	28
California .....	58	48	56	49	49	46
Colorado .....	175	195	205	185	155	145
Idaho .....	47	41	42	41	48	35
Iowa .....	80	93	95	92	115	100
Kansas .....	460	420	475	375	340	395
Nebraska .....	465	415	400	350	390	375
Oklahoma .....	65	74	67	79	63	61
South Dakota .....	46	35	48	35	39	41
Texas .....	560	470	540	490	465	450
Washington .....	39	41	44	38	40	43
Other States .....	70	63	59	58	64	55
United States .....	2,092	1,918	2,053	1,813	1,787	1,774

<sup>1</sup> December prior year.

**Other Disappearance on 1,000+ Capacity Feedlots by Month – States and United States: 2011**

State	During					
	December <sup>1</sup> (1,000 head)	January (1,000 head)	February (1,000 head)	March (1,000 head)	April (1,000 head)	May (1,000 head)
Arizona .....	1	1	1	1	1	1
California .....	4	3	3	3	2	2
Colorado .....	5	5	5	5	5	10
Idaho .....	2	1	1	1	1	1
Iowa .....	3	4	2	3	3	4
Kansas .....	10	10	10	10	15	15
Nebraska .....	10	15	15	10	10	25
Oklahoma .....	2	2	2	2	2	1
South Dakota .....	1	1	2	2	2	3
Texas .....	20	10	15	10	10	10
Washington .....	3	2	3	3	2	2
Other States .....	5	3	2	3	7	7
United States .....	66	57	61	53	60	81
	During					
	June (1,000 head)	July (1,000 head)	August (1,000 head)	September (1,000 head)	October (1,000 head)	November (1,000 head)
Arizona .....	1	1	1	1	1	1
California .....	2	4	5	6	5	5
Colorado .....	10	5	5	10	5	10
Idaho .....	2	3	1	1	2	1
Iowa .....	4	2	2	3	2	3
Kansas .....	10	10	15	15	20	20
Nebraska .....	15	15	15	10	15	15
Oklahoma .....	2	2	3	4	3	4
South Dakota .....	10	2	2	1	1	4
Texas .....	10	20	20	20	35	30
Washington .....	3	3	1	1	1	1
Other States .....	3	4	2	2	8	3
United States .....	72	71	72	74	98	97

<sup>1</sup> December prior year.

**Number on Feed by Class on 1,000+ Capacity Feedlots by Quarter – States and United States: 2011**

State	Steers & steer calves				Heifers & heifer calves			
	January 1 (1,000 head)	April 1 (1,000 head)	July 1 (1,000 head)	October 1 (1,000 head)	January 1 (1,000 head)	April 1 (1,000 head)	July 1 (1,000 head)	October 1 (1,000 head)
Arizona .....	255	268	283	277	3	8	4	3
California .....	405	390	410	425	65	59	60	63
Colorado .....	710	740	690	730	365	345	305	335
Idaho .....	116	120	110	136	108	94	104	82
Iowa .....	440	460	410	380	199	190	180	169
Kansas .....	1,220	1,220	1,070	1,220	1,055	965	955	1,090
Nebraska .....	1,520	1,480	1,190	1,290	895	890	820	905
Oklahoma .....	210	210	210	205	165	145	140	165
South Dakota .....	129	135	107	114	107	114	86	81
Texas .....	1,750	1,680	1,630	1,750	1,089	1,090	1,059	1,189
Washington .....	130	135	120	123	71	68	71	83
Other States .....	293	281	272	285	137	122	106	133
United States .....	7,178	7,119	6,502	6,935	4,259	4,090	3,890	4,298
	Cows and bulls							
	January 1	April 1	July 1	October 1				
	(1,000 head)	(1,000 head)	(1,000 head)	(1,000 head)				
Arizona .....	0	0	0	0	0	0	0	0
California .....	0	0	1	0	0	0	0	2
Colorado .....	5	5	5	5	5	5	5	5
Idaho .....	16	6	6	1	1	1	1	2
Iowa .....	1	1	0	0	0	0	0	1
Kansas .....	5	5	5	5	5	5	5	10
Nebraska .....	15	15	10	10	10	10	10	15
Oklahoma .....	0	0	0	0	0	0	0	0
South Dakota .....	24	24	16	16	17	17	17	10
Texas .....	1	1	0	0	1	1	1	1
Washington .....	7	7	4	4	1	1	1	2
Other States .....	2	2	1	1	1	1	1	1
United States .....	76	76	48	48	41	41	41	49

**Number of Feedlots, Inventory, and Marketings by Size of Feedlot – United States: 2010 and 2011**

Feedlot capacity	2010			2011		
	Lots	Inventory <sup>1</sup>	Cattle marketed	Lots	Inventory <sup>1</sup>	Cattle marketed
	(number)	(1,000 head)	(1,000 head)	(number)	(1,000 head)	(1,000 head)
Less than 1,000 head .....	75,000	2,498.9	4,032	75,000	2,260.4	3,170
1,000 head or more .....	2,140	11,513	22,078	2,120	11,861	22,577
1,000 - 1,999 .....	790	453	778	770	416	727
2,000 - 3,999 .....	560	800	1,400	560	770	1,360
4,000 - 7,999 .....	335	1,030	1,760	345	1,070	1,870
8,000 - 15,999 .....	180	1,250	2,470	170	1,220	2,320
16,000 - 23,999 .....	85	1,130	2,040	86	1,130	2,160
24,000 - 31,999 .....	55	1,050	2,050	52	970	1,880
32,000 - 49,999 .....	71	2,050	4,110	71	2,125	4,100
50,000 and Over .....	64	3,750	7,470	66	4,160	8,160
All feedlots .....	77,140	14,011.9	26,110	77,120	14,121.4	25,747

<sup>1</sup> Inventory estimates as of January 1 of the following year.

**Total Feedlot Capacity of 1000+ Capacity Feedlots – United States: January 1, 2011 and 2012**

Item	Feedlot capacity in number of head	
	2011	2012
	(1,000 head)	(1,000 head)
United States .....	17,000	17,000



## Terms and Definitions of Cattle on Feed Estimates

**Number of feedlots** is the number of lots operating at the end of the year with inventory of cattle on feed.

**Cattle on feed** are animals being fed a ration of grain, silage, hay and/or protein supplement for slaughter market that are expected to produce a carcass that will grade select or better. It excludes cattle being "backgrounded only" for later sale as feeders or later placement in another feedlot.

**Placements** are cattle put into a feedlot, fed a ration which will produce a carcass that will grade select or better, and are intended for the slaughter market.

**Marketings** are cattle shipped out of feedlots to a slaughter market.

**Other disappearance** includes death loss, movement from feedlots to pasture, and shipments to other feedlots for further feeding.

## Reliability of Cattle on Feed Estimates

**Survey Procedures:** During January and July all known feedlots in the United States with capacity of 1,000 or more head are surveyed to provide data for cattle on feed estimates. During the other months, all known feedlots from 16 States are surveyed. The 16 States account for 98 percent of the cattle on feed in feedlots with capacity of 1,000 or more head. Individual State estimates are published monthly for 11 of the 16 States. Data collected from the remaining 5 States are used to establish the "Other States" estimates. These 5 States include Illinois, Minnesota, New Mexico, Oregon, and Wyoming. The "Other States" category represents all cattle on feed with a capacity of 1,000 or more head for the rest of the United States.

**Estimating Procedures:** These cattle on feed estimates were prepared by the Agricultural Statistics Board after reviewing recommendations and analysis submitted by each State office. Regional and State survey data were reviewed for reasonableness with each other and with estimates from the previous month when establishing the current estimates.

**Revision Policy:** Revisions to previous estimates are made to improve month to month relationships. Estimates for the previous month are subject to revision in all States each month when current estimates are made. In February, all monthly estimates for the previous year, and the number of feedlots and annual marketings from two years ago are reviewed and subject to revisions. The reviews are primarily based on slaughter data, state check-off or brand data, and any other data that may have been received after the original estimate was made. Estimates will also be reviewed after data from the Census of Agriculture are available. No revisions will be made after that date and estimates become final.

**Reliability:** Since all 1,000+ capacity cattle on feed operators in every State are not included in the monthly survey, survey estimates are subject to sampling variability. Survey results are also subject to non-sampling errors such as omissions, duplications, and mistakes in reporting, recording, and processing the data. The effects of these errors cannot be measured directly. They are minimized through rigid quality controls in the data collection process and through a careful review of all reported data for consistency and reasonableness.

To assist users in evaluating the reliability of estimates in this report, the "Root Mean Square Error" is shown for selected items in the table on the following page. The "Root Mean Square Error" is a statistical measure based on past performance and is computed using the differences between first and latest estimates. The "Root Mean Square Error" for cattle on feed inventory estimates over the past 24 months is 0.2 percent. This means that chances are 2 out of 3 that the final estimate will not be above or below the current estimate of 11.8 million head by more than 0.2 percent. Chances are 9 out of 10 that the difference will not exceed 0.3 percent.

The table on this page shows a 24 month record of the range of differences between first and latest estimates for selected items. Using estimates of number on feed as an example, changes between the first estimate and the latest estimate during the past 24 months have averaged 17,000 head, ranging from 0 to 47,000 head. During this period the initial estimate has been above the latest estimate 16 times and has been below the latest estimate 7 times. This does not imply that the initial estimate is likely to understate or overstate final inventory.

### Reliability of Monthly Cattle on Feed Estimates

[Based on data for the past 24 months]

Item	Root mean square error	90 percent confidence level	Difference between first and latest estimate				
			Average	Smallest	Largest	Months	
						Below latest	Above latest
	(percent)	(percent)	(1,000)	(1,000)	(1,000)	(number)	(number)
Number on feed .....	0.2	0.3	17	0	47	7	16
Placements .....	0.3	0.6	4	0	18	10	10
Marketings .....	0.3	0.5	3	0	20	9	7

### Information Contacts

Listed below are the commodity specialists in the Livestock Branch of the National Agricultural Statistics Service to contact for additional information. E-mail inquiries may be sent to [nass@nass.usda.gov](mailto:nass@nass.usda.gov)

Dan Kerestes, Chief, Livestock Branch .....	(202) 720-3570
Scott Hollis, Head, Livestock Section .....	(202) 690-2424
Travis Averill – Cattle, Cattle on Feed .....	(202) 720-3040
Sherry Bertramsen – Livestock Slaughter .....	(515) 284-4340
Doug Bounds – Hogs and Pigs, Goats .....	(202) 720-3106
Mike Miller – Milk Production and Milk Cows .....	(202) 720-3278
Everett Olbert – Dairy Products Prices .....	(202) 720-4751
Lorie Warren – Dairy Products, Sheep .....	(202) 690-3236

## Access to NASS Reports

For your convenience, you may access NASS reports and products the following ways:

- All reports are available electronically, at no cost, on the NASS web site: <http://www.nass.usda.gov>
- Both national and state specific reports are available via a free e-mail subscription. To set-up this free subscription, visit <http://www.nass.usda.gov> and in the “Follow NASS” box under “Receive reports by Email,” click on “National” or “State” to select the reports you would like to receive.
- Printed reports may be purchased from the National Technical Information Service (NTIS) by calling toll-free (800) 999-6779, or (703) 605-6220 if calling from outside the United States or Canada. Accepted methods of payment are Visa, MasterCard, check, or money order.

For more information on NASS surveys and reports, call the NASS Agricultural Statistics Hotline at (800) 727-9540, 7:30 a.m. to 4:00 p.m. ET, or e-mail: [nass@nass.usda.gov](mailto:nass@nass.usda.gov).

The United States Department of Agriculture (USDA) prohibits discrimination in all its programs and activities on the basis of race, color, national origin, age, disability, and where applicable, sex, marital status, familial status, parental status, religion, sexual orientation, political beliefs, genetic information, reprisal, or because all or a part of an individual's income is derived from any public assistance program. (Not all prohibited bases apply to all programs.) Persons with disabilities who require alternative means for communication of program information (Braille, large print, audiotape, etc.) should contact USDA's TARGET Center at (202) 720-2600 (voice and TDD).

To file a complaint of discrimination, write to USDA, Assistant Secretary for Civil Rights, Office of the Assistant Secretary for Civil Rights, 1400 Independence Avenue, S.W., Stop 9410, Washington, DC 20250-9410, or call toll-free at (866) 632-9992 (English) or (800) 877-8339 (TDD) or (866) 377-8642 (English Federal-relay) or (800) 845-6136 (Spanish Federal-relay). USDA is an equal opportunity provider and employer.