



Cattle on Feed

ISSN: 1948-9080

Released June 20, 2014, by the National Agricultural Statistics Service (NASS), Agricultural Statistics Board, United States Department of Agriculture (USDA).

United States Cattle on Feed Down 2 Percent

Cattle and calves on feed for slaughter market in the United States for feedlots with capacity of 1,000 or more head totaled 10.6 million head on June 1, 2014. The inventory was 2 percent below June 1, 2013.

Placements in feedlots during May totaled 1.91 million, 7 percent below 2013. Net placements were 1.81 million head. During May, placements of cattle and calves weighing less than 600 pounds were 435,000, 600-699 pounds were 290,000, 700-799 pounds were 477,000, and 800 pounds and greater were 710,000.

Marketings of fed cattle during May totaled 1.87 million, 4 percent below 2013. May marketings are the lowest for the month since the series began in 1996.

Other disappearance totaled 101,000 during May, 1 percent above 2013.

Number of Cattle on Feed, Placements, Marketings, and Other Disappearance on 1,000+ Capacity Feedlots – United States: June 1, 2013 and 2014

Item	Number		Percent of previous year
	2013	2014	
	(1,000 head)	(1,000 head)	(percent)
On feed May 1	10,760	10,648	99
Placed on feed during May	2,055	1,912	93
Fed cattle marketed during May	1,948	1,865	96
Other disappearance during May	100	101	101
On feed June 1	10,767	10,594	98

Number of Cattle on Feed, Placements, Marketings, and Other Disappearance on 1,000+ Capacity Feedlots – United States: May 1, 2013 and 2014

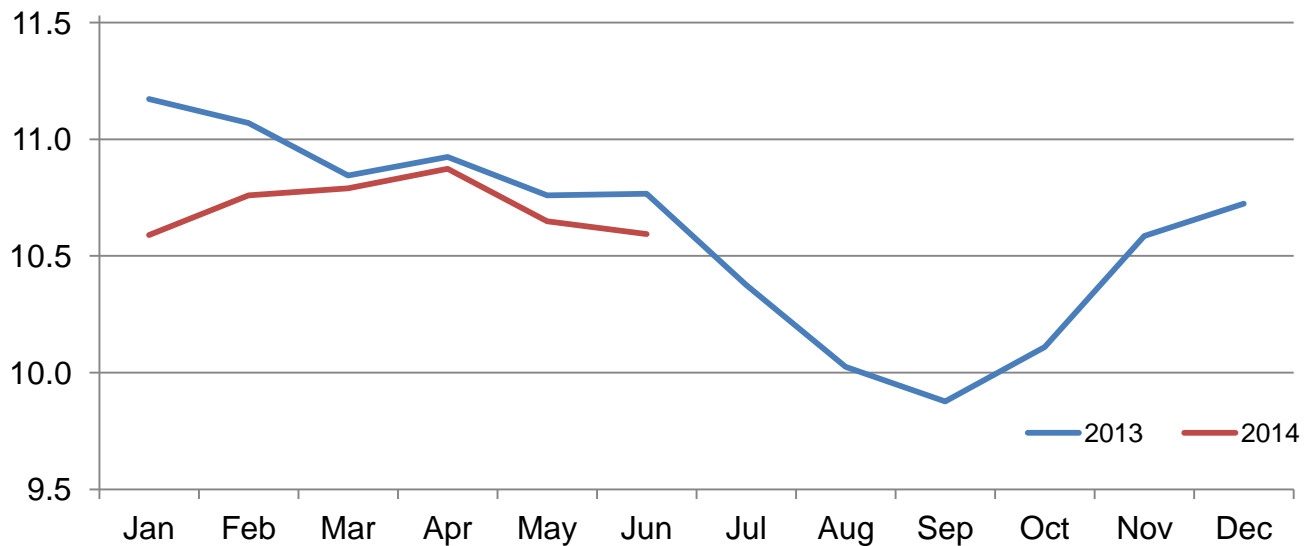
Item	Number		Percent of previous year
	2013	2014	
	(1,000 head)	(1,000 head)	(percent)
On feed April 1	10,924	10,873	100
Placed on feed during April	1,720	1,636	95
Fed cattle marketed during April	1,815	1,778	98
Other disappearance during April	69	83	120
On feed May 1	10,760	10,648	99

Number of Cattle on Feed on 1,000+ Capacity Feedlots by Month – States and United States: 2013 and 2014

State	June 1, 2013	May 1, 2014	June 1, 2014		
			Number	Percent of previous year	Percent of previous month
	(1,000 head)	(1,000 head)	(1,000 head)	(percent)	(percent)
Arizona	272	277	275	101	99
California	510	450	435	85	97
Colorado	960	960	930	97	97
Idaho	205	215	205	100	95
Iowa	610	660	640	105	97
Kansas	2,070	2,010	2,020	98	100
Minnesota	131	138	123	94	89
Nebraska	2,340	2,490	2,410	103	97
Oklahoma	310	255	265	85	104
South Dakota	215	235	225	105	96
Texas	2,630	2,430	2,550	97	105
Washington	214	208	201	94	97
Other States	300	320	315	105	98
United States	10,767	10,648	10,594	98	99

Cattle on Feed Inventory on 1,000+ Capacity Feedlots – United States

Million head

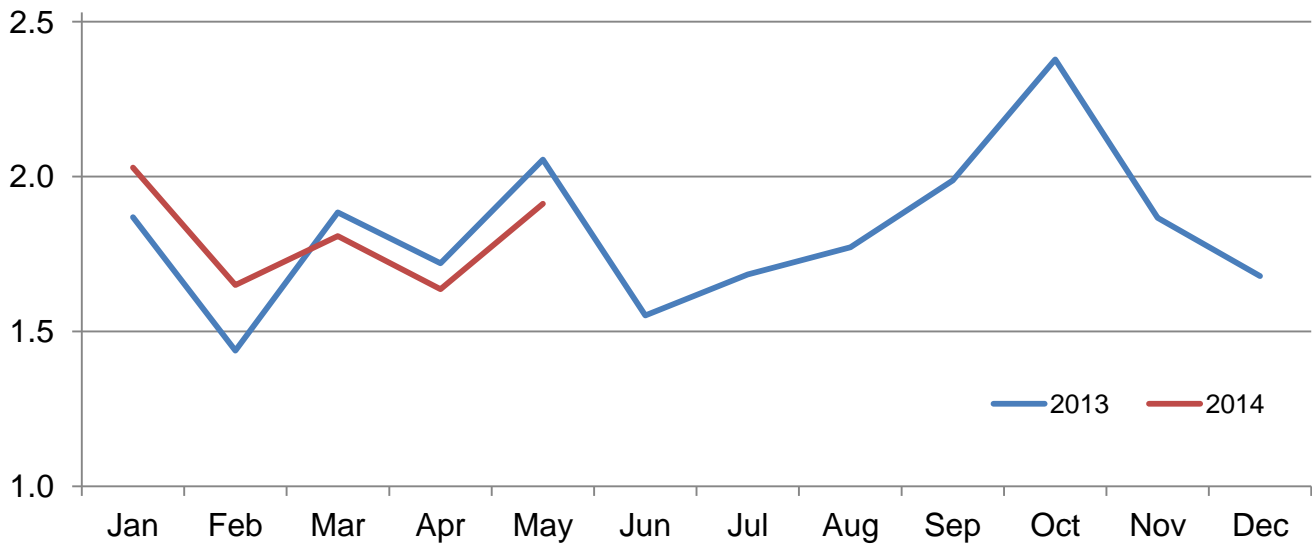


Number of Cattle Placed on Feed on 1,000+ Capacity Feedlots by Month – States and United States: 2013 and 2014

State	During May 2013 (1,000 head)	During April 2014 (1,000 head)	During May 2014		
			Number (1,000 head)	Percent of previous year (percent)	Percent of previous month (percent)
Arizona	25	26	24	96	92
California	72	57	50	69	88
Colorado	170	130	140	82	108
Idaho	41	32	23	56	72
Iowa	65	69	54	83	78
Kansas	430	325	435	101	134
Minnesota	17	16	8	47	50
Nebraska	470	420	425	90	101
Oklahoma	78	43	67	86	156
South Dakota	39	28	34	87	121
Texas	570	420	580	102	138
Washington	40	35	40	100	114
Other States	38	35	32	84	91
United States	2,055	1,636	1,912	93	117

Number of Cattle Placed on 1,000+ Capacity Feedlots – United States

Million head



Number of Cattle Placed on Feed by Weight Group on 1,000+ Capacity Feedlots by Month – States and United States: 2013 and 2014

State	During May									
	Under 600 lbs		600-699 lbs		700-799 lbs		800+ lbs		Total	
	2013	2014	2013	2014	2013	2014	2013	2014	2013	2014
	(1,000 head)	(1,000 head)	(1,000 head)	(1,000 head)	(1,000 head)	(1,000 head)	(1,000 head)	(1,000 head)	(1,000 head)	(1,000 head)
Colorado	30	35	20	20	50	35	70	50	170	140
Kansas	55	80	70	75	130	120	175	160	430	435
Nebraska	55	55	60	55	130	95	225	220	470	425
Texas	160	180	105	100	155	160	150	140	570	580
Other States	95	85	55	40	90	67	175	140	415	332
United States	395	435	310	290	555	477	795	710	2,055	1,912

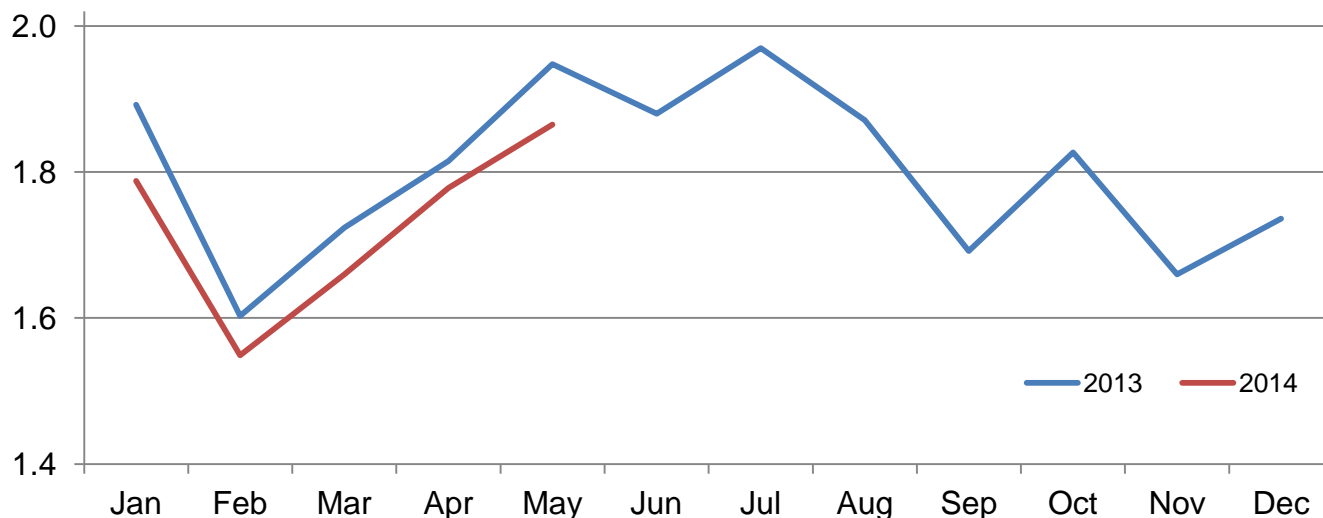
State	During April									
	Under 600 lbs		600-699 lbs		700-799 lbs		800+ lbs		Total	
	2013	2014	2013	2014	2013	2014	2013	2014	2013	2014
	(1,000 head)	(1,000 head)	(1,000 head)	(1,000 head)	(1,000 head)	(1,000 head)	(1,000 head)	(1,000 head)	(1,000 head)	(1,000 head)
Colorado	20	25	35	25	40	35	45	45	140	130
Kansas	55	60	50	50	90	90	140	125	335	325
Nebraska	70	65	70	65	105	95	195	195	440	420
Texas	140	140	65	70	115	110	115	100	435	420
Other States	85	95	50	45	90	66	145	135	370	341
United States	370	385	270	255	440	396	640	600	1,720	1,636

Number of Cattle Marketed on 1,000+ Capacity Feedlots by Month – States and United States: 2013 and 2014

State	During May 2013	During April 2014	During May 2014		
			Number	Percent of previous year	Percent of previous month
			(1,000 head)	(percent)	(percent)
Arizona	27	25	25	93	100
California	54	67	60	111	90
Colorado	150	130	145	97	112
Idaho	45	26	32	71	123
Iowa	72	76	70	97	92
Kansas	410	385	400	98	104
Minnesota	15	13	22	147	169
Nebraska	510	415	485	95	117
Oklahoma	61	62	55	90	89
South Dakota	45	30	41	91	137
Texas	465	480	450	97	94
Washington	45	36	45	100	125
Other States	49	33	35	71	106
United States	1,948	1,778	1,865	96	105

Number of Cattle Marketed on 1,000+ Capacity Feedlots – United States

Million head



Other Disappearance on 1,000+ Capacity Feedlots by Month – States and United States: 2013 and 2014

State	During May 2013 (1,000 head)	During April 2014 (1,000 head)	During May 2014		
			Number (1,000 head)	Percent of previous year (percent)	Percent of previous month (percent)
Arizona	1	1	1	100	100
California	3	15	5	167	33
Colorado	20	10	25	125	250
Idaho	1	1	1	100	100
Iowa	3	3	4	133	133
Kansas	20	20	25	125	125
Minnesota	1	1	1	100	100
Nebraska	20	15	20	100	133
Oklahoma	2	1	2	100	200
South Dakota	4	3	3	75	100
Texas	15	10	10	67	100
Washington	1	1	2	200	200
Other States	9	2	2	22	100
United States	100	83	101	101	122

Terms and Definitions of Cattle on Feed Estimates

Cattle on feed are animals being fed a ration of grain, silage, hay and/or protein supplement for slaughter market that are expected to produce a carcass that will grade select or better. It excludes cattle being "backgrounded only" for later sale as feeders or later placement in another feedlot.

Placements are cattle put into a feedlot, fed a ration which will produce a carcass that will grade select or better, and are intended for the slaughter market.

Marketings are cattle shipped out of feedlots to a slaughter market.

Other disappearance includes death loss, movement from feedlots to pasture, and shipments to other feedlots for further feeding.

Reliability of Cattle on Feed Estimates

Survey Procedures: During January and July all known feedlots in the United States with capacity of 1,000 or more head are surveyed to provide data for cattle on feed estimates. During the other months, all known feedlots from 16 States are surveyed. The 16 States account for approximately 98 percent of the cattle on feed in feedlots with capacity of 1,000 or more head. Individual State estimates are published monthly for 11 of the 16 States. Data collected from the remaining 5 States are used to establish the "Other States" estimates. These 5 States include Illinois, Minnesota, New Mexico, Oregon, and Wyoming. The "Other States" category represents all cattle on feed with a capacity of 1,000 or more head for the rest of the United States.

Estimating Procedures: These cattle on feed estimates were prepared by the Agricultural Statistics Board after reviewing recommendations and analysis submitted by each State office. Regional and State survey data were reviewed for reasonableness with each other and with estimates from the previous month when establishing the current estimates.

Revision Policy: Revisions to previous estimates are made to improve month to month relationships. Estimates for the previous month are subject to revision in all States each month when current estimates are made. In February, all monthly estimates for the previous year, and the number of feedlots and annual marketings from two years ago are reviewed and subject to revisions. The reviews are primarily based on slaughter data, state check-off or brand data, and any other data that may have been received after the original estimate was made. Estimates will also be reviewed after data from the Census of Agriculture are available. No revisions will be made after that date and estimates become final.

Reliability: Since all 1,000+ capacity cattle on feed operators in every State are not included in the monthly survey, survey estimates are subject to sampling variability. Survey results are also subject to non-sampling errors such as omissions, duplications, and mistakes in reporting, recording, and processing the data. The effects of these errors cannot be measured directly. They are minimized through rigid quality controls in the data collection process and through a careful review of all reported data for consistency and reasonableness.

To assist users in evaluating the reliability of estimates in this report, the "**Root Mean Square Error**" is shown for selected items in the table on the following page. The "Root Mean Square Error" is a statistical measure based on past performance and is computed using the differences between first and latest estimates. The "Root Mean Square Error" for cattle on feed inventory estimates over the past 24 months is 0.1 percent. This means that chances are 2 out of 3 that the final estimate will not be above or below the current estimate of 10.6 million head by more than 0.1 percent. Chances are 9 out of 10 that the difference will not exceed 0.2 percent.

The table on the following page shows a 24 month record of the range of differences between first and latest estimates for selected items. Using estimates of number on feed as an example, changes between the first estimate and the latest estimate during the past 24 months have averaged 9,000 head, ranging from 0 to 34,000 head. During this period the initial estimate has been above the latest estimate 9 times and has been below the latest estimate 7 times. This does not imply that the initial estimate is likely to understate or overstate final inventory.

Reliability of Monthly Cattle on Feed Estimates

[Based on data for the past 24 months]

Item	Root mean square error	90 percent confidence level	Difference between first and latest estimate				
			Average	Smallest	Largest	Months	
						Below latest	Above latest
	(percent)	(percent)	(1,000)	(1,000)	(1,000)	(number)	(number)
Number on feed	0.1	0.2	9	0	34	7	9
Placements	1.6	2.8	16	0	88	4	13
Marketings	1.3	2.3	14	0	67	1	12

Information Contacts

Listed below are the commodity specialists in the Livestock Branch of the National Agricultural Statistics Service to contact for additional information. E-mail inquiries may be sent to nass@nass.usda.gov

Dan Kerestes, Chief, Livestock Branch	(202) 720-3570
Scott Hollis, Head, Livestock Section	(202) 690-2424
Travis Averill – Cattle, Cattle on Feed	(202) 720-3040
Doug Bounds – Hogs and Pigs	(202) 720-3106
Alissa Cowell-Mytar – Sheep and Goats.....	(202) 720-4751
Donnie Fike – Dairy Products	(202) 690-3236
Tiffany Hora – Livestock Slaughter	(515) 284-4340
Mike Miller – Milk Production and Milk Cows	(202) 720-3278

Access to NASS Reports

For your convenience, you may access NASS reports and products the following ways:

- All reports are available electronically, at no cost, on the NASS web site: <http://www.nass.usda.gov>
- Both national and state specific reports are available via a free e-mail subscription. To set-up this free subscription, visit <http://www.nass.usda.gov> and in the “Follow NASS” box under “Receive reports by Email,” click on “National” or “State” to select the reports you would like to receive.

For more information on NASS surveys and reports, call the NASS Agricultural Statistics Hotline at (800) 727-9540, 7:30 a.m. to 4:00 p.m. ET, or e-mail: nass@nass.usda.gov.

The U.S. Department of Agriculture (USDA) prohibits discrimination against its customers, employees, and applicants for employment on the bases of race, color, national origin, age, disability, sex, gender identity, religion, reprisal, and where applicable, political beliefs, marital status, familial or parental status, sexual orientation, or all or part of an individual's income is derived from any public assistance program, or protected genetic information in employment or in any program or activity conducted or funded by the Department. (Not all prohibited bases will apply to all programs and/or employment activities.)

If you wish to file a Civil Rights program complaint of discrimination, complete the [USDA Program Discrimination Complaint Form](#) (PDF), found online at http://www.ascr.usda.gov/complaint_filing_cust.html, or at any USDA office, or call (866) 632-9992 to request the form. You may also write a letter containing all of the information requested in the form. Send your completed complaint form or letter to us by mail at U.S. Department of Agriculture, Director, Office of Adjudication, 1400 Independence Avenue, S.W., Washington, D.C. 20250-9410, by fax (202) 690-7442 or email at program.intake@usda.gov.