



Cattle on Feed

ISSN: 1948-9080

Released June 22, 2012, by the National Agricultural Statistics Service (NASS), Agricultural Statistics Board, United States Department of Agriculture (USDA).

United States Cattle on Feed Up 2 Percent

Cattle and calves on feed for slaughter market in the United States for feedlots with capacity of 1,000 or more head totaled 11.1 million head on June 1, 2012. The inventory was 2 percent above June 1, 2011.

Placements in feedlots during May totaled 2.09 million, 15 percent above 2011. Net placements were 1.99 million head. During May, placements of cattle and calves weighing less than 600 pounds were 520,000, 600-699 pounds were 365,000, 700-799 pounds were 530,000, and 800 pounds and greater were 672,000.

Marketings of fed cattle during May totaled 2.02 million, 1 percent above 2011.

Other disappearance totaled 100,000 during May, 23 percent above 2011.

Number of Cattle on Feed, Placements, Marketings, and Other Disappearance on 1,000+ Capacity Feedlots – United States: June 1, 2011 and 2012

Item	Number		Percent of previous year
	2011	2012	
	(1,000 head)	(1,000 head)	(percent)
On feed May 1	11,175	11,110	99
Placed on feed during May	1,810	2,087	115
Fed cattle marketed during May	2,002	2,015	101
Other disappearance during May	81	100	123
On feed June 1	10,902	11,082	102

Number of Cattle on Feed, Placements, Marketings, and Other Disappearance on 1,000+ Capacity Feedlots – United States: May 1, 2011 and 2012

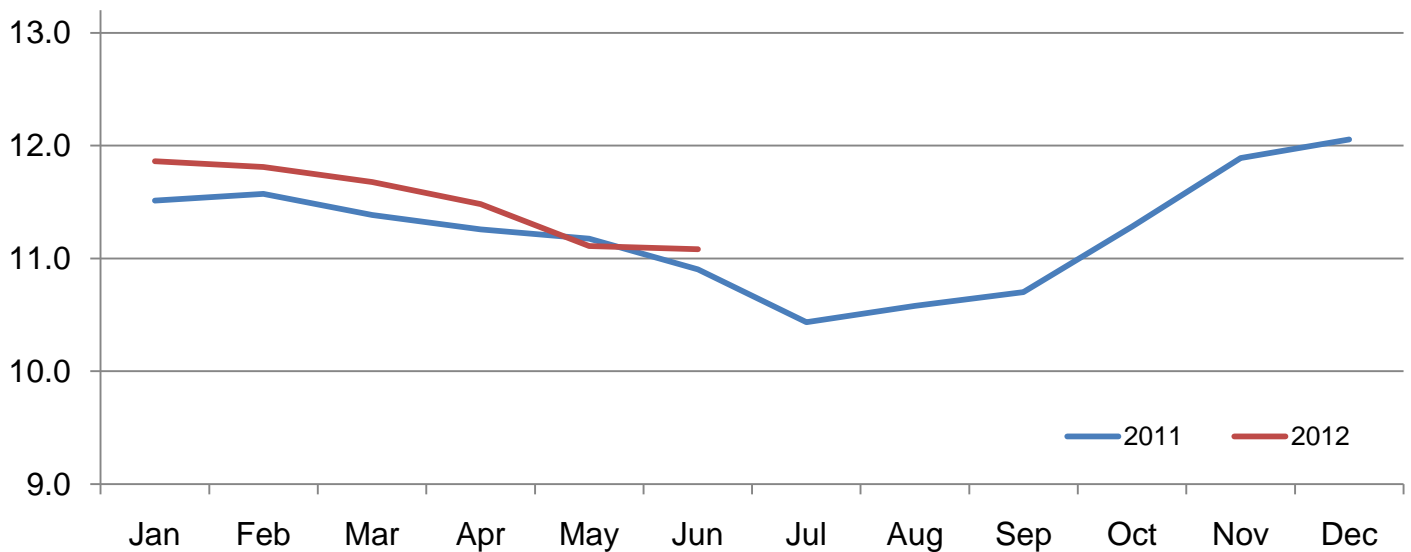
Item	Number		Percent of previous year
	2011	2012	
	(1,000 head)	(1,000 head)	(percent)
On feed April 1	11,257	11,482	102
Placed on feed during April	1,785	1,521	85
Fed cattle marketed during April	1,807	1,815	100
Other disappearance during April	60	78	130
On feed May 1	11,175	11,110	99

Number of Cattle on Feed on 1,000+ Capacity Feedlots by Month – States and United States: 2011 and 2012

State	June 1, 2011	May 1, 2012	June 1, 2012		
			Number	Percent of previous year	Percent of previous month
	(1,000 head)	(1,000 head)	(1,000 head)	(percent)	(percent)
Arizona	290	276	282	97	102
California	460	475	490	107	103
Colorado	1,080	1,030	1,020	94	99
Idaho	230	215	210	91	98
Iowa	610	650	640	105	98
Kansas	2,110	2,080	2,090	99	100
Nebraska	2,190	2,460	2,360	108	96
Oklahoma	355	295	320	90	108
South Dakota	235	245	235	100	96
Texas	2,760	2,710	2,770	100	102
Washington	193	224	220	114	98
Other States	389	450	445	114	99
United States	10,902	11,110	11,082	102	100

Cattle on Feed Inventory on 1,000+ Capacity Feedlots – United States

Million head

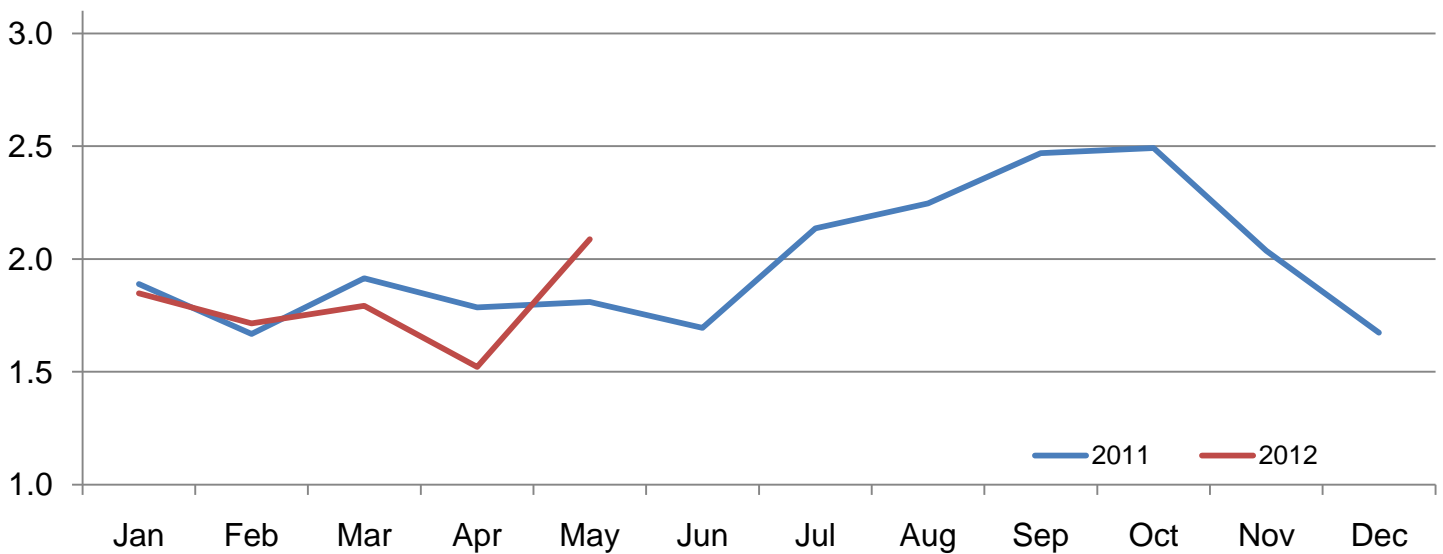


Number of Cattle Placed on Feed on 1,000+ Capacity Feedlots by Month – States and United States: 2011 and 2012

State	During May 2011 (1,000 head)	During April 2012 (1,000 head)	During May 2012		
			Number (1,000 head)	Percent of previous year (percent)	Percent of previous month (percent)
Arizona	28	26	36	129	138
California	71	45	70	99	156
Colorado	140	120	180	129	150
Idaho	36	28	29	81	104
Iowa	47	55	59	126	107
Kansas	375	300	445	119	148
Nebraska	340	370	460	135	124
Oklahoma	66	47	81	123	172
South Dakota	33	32	38	115	119
Texas	560	410	580	104	141
Washington	39	28	43	110	154
Other States	75	60	66	88	110
United States	1,810	1,521	2,087	115	137

Number of Cattle Placed on 1,000+ Capacity Feedlots – United States

Million head



Number of Cattle Placed on Feed by Weight Group on 1,000+ Capacity Feedlots by Month – States and United States: 2011 and 2012

State	During May									
	Under 600 lbs		600-699 lbs		700-799 lbs		800+ lbs		Total	
	2011	2012	2011	2012	2011	2012	2011	2012	2011	2012
	(1,000 head)	(1,000 head)	(1,000 head)	(1,000 head)	(1,000 head)	(1,000 head)	(1,000 head)	(1,000 head)	(1,000 head)	(1,000 head)
Colorado	30	35	25	30	35	45	50	70	140	180
Kansas	65	90	70	90	110	130	130	135	375	445
Nebraska	50	70	55	60	80	130	155	200	340	460
Texas	170	220	150	125	165	140	75	95	560	580
Other States	100	105	55	60	90	85	150	172	395	422
United States	415	520	355	365	480	530	560	672	1,810	2,087

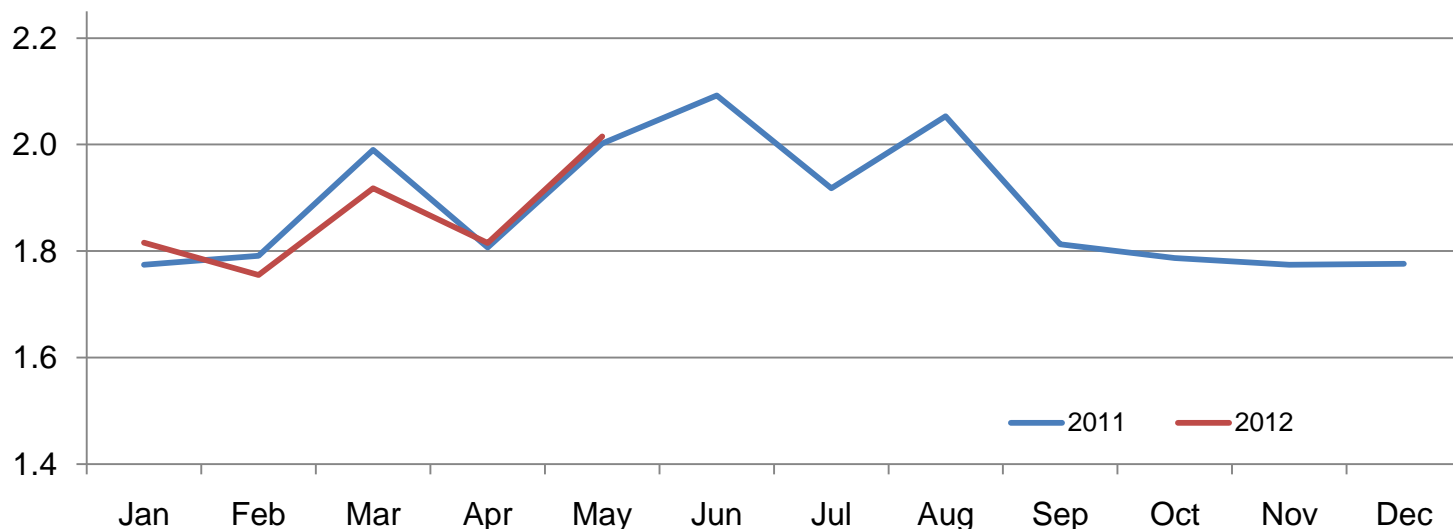
State	During April									
	Under 600 lbs		600-699 lbs		700-799 lbs		800+ lbs		Total	
	2011	2012	2011	2012	2011	2012	2011	2012	2011	2012
	(1,000 head)	(1,000 head)	(1,000 head)	(1,000 head)	(1,000 head)	(1,000 head)	(1,000 head)	(1,000 head)	(1,000 head)	(1,000 head)
Colorado	35	25	30	20	45	30	55	45	165	120
Kansas	60	60	60	55	130	85	130	100	380	300
Nebraska	60	50	60	50	100	90	150	180	370	370
Texas	190	130	95	80	120	105	95	95	500	410
Other States	100	90	65	45	90	70	115	116	370	321
United States	445	355	310	250	485	380	545	536	1,785	1,521

Number of Cattle Marketed on 1,000+ Capacity Feedlots by Month – States and United States: 2011 and 2012

State	During May 2011	During April 2012	During May 2012		
			Number	Percent of previous year	Percent of previous month
			(1,000 head)	(percent)	(percent)
	(1,000 head)	(1,000 head)	(1,000 head)	(percent)	(percent)
Arizona	19	27	29	153	107
California	59	58	53	90	91
Colorado	150	150	170	113	113
Idaho	35	36	32	91	89
Iowa	73	72	64	88	89
Kansas	420	380	415	99	109
Nebraska	495	420	540	109	129
Oklahoma	65	70	54	83	77
South Dakota	50	40	43	86	108
Texas	520	465	500	96	108
Washington	44	34	46	105	135
Other States	72	63	69	96	110
United States	2,002	1,815	2,015	101	111

Number of Cattle Marketed on 1,000+ Capacity Feedlots – United States

Million head



Other Disappearance on 1,000+ Capacity Feedlots by Month – States and United States: 2011 and 2012

State	During May 2011 (1,000 head)	During April 2012 (1,000 head)	During May 2012		
			Number (1,000 head)	Percent of previous year (percent)	Percent of previous month (percent)
Arizona	1	1	1	100	100
California	2	2	2	100	100
Colorado	10	10	20	200	200
Idaho	1	2	2	200	100
Iowa	4	3	5	125	167
Kansas	15	10	20	133	200
Nebraska	25	20	20	80	100
Oklahoma	1	2	2	200	100
South Dakota	3	2	5	167	250
Texas	10	15	20	200	133
Washington	2	3	1	50	33
Other States	7	8	2	29	25
United States	81	78	100	123	128

Terms and Definitions of Cattle on Feed Estimates

Cattle on feed are animals being fed a ration of grain, silage, hay and/or protein supplement for slaughter market that are expected to produce a carcass that will grade select or better. It excludes cattle being "backgrounded only" for later sale as feeders or later placement in another feedlot.

Placements are cattle put into a feedlot, fed a ration which will produce a carcass that will grade select or better, and are intended for the slaughter market.

Marketings are cattle shipped out of feedlots to a slaughter market.

Other disappearance includes death loss, movement from feedlots to pasture, and shipments to other feedlots for further feeding.

Reliability of Cattle on Feed Estimates

Survey Procedures: During January and July all known feedlots in the United States with capacity of 1,000 or more head are surveyed to provide data for cattle on feed estimates. During the other months, all known feedlots from 16 States are surveyed. The 16 States account for approximately 98 percent of the cattle on feed in feedlots with capacity of 1,000 or more head. Individual State estimates are published monthly for 11 of the 16 States. Data collected from the remaining 5 States are used to establish the "Other States" estimates. These 5 States include Illinois, Minnesota, New Mexico, Oregon, and Wyoming. The "Other States" category represents all cattle on feed with a capacity of 1,000 or more head for the rest of the United States.

Estimating Procedures: These cattle on feed estimates were prepared by the Agricultural Statistics Board after reviewing recommendations and analysis submitted by each State office. Regional and State survey data were reviewed for reasonableness with each other and with estimates from the previous month when establishing the current estimates.

Revision Policy: Revisions to previous estimates are made to improve month to month relationships. Estimates for the previous month are subject to revision in all States each month when current estimates are made. In February, all monthly estimates for the previous year, and the number of feedlots and annual marketings from two years ago are reviewed and subject to revisions. The reviews are primarily based on slaughter data, state check-off or brand data, and any other data that may have been received after the original estimate was made. Estimates will also be reviewed after data from the Census of Agriculture are available. No revisions will be made after that date and estimates become final.

Reliability: Since all 1,000+ capacity cattle on feed operators in every State are not included in the monthly survey, survey estimates are subject to sampling variability. Survey results are also subject to non-sampling errors such as omissions, duplications, and mistakes in reporting, recording, and processing the data. The effects of these errors cannot be measured directly. They are minimized through rigid quality controls in the data collection process and through a careful review of all reported data for consistency and reasonableness.

To assist users in evaluating the reliability of estimates in this report, the "**Root Mean Square Error**" is shown for selected items in the table on the following page. The "Root Mean Square Error" is a statistical measure based on past performance and is computed using the differences between first and latest estimates. The "Root Mean Square Error" for cattle on feed inventory estimates over the past 24 months is 0.2 percent. This means that chances are 2 out of 3 that the final estimate will not be above or below the current estimate of 11.1 million head by more than 0.1 percent. Chances are 9 out of 10 that the difference will not exceed 0.3 percent.

The table on the following page shows a 24 month record of the range of differences between first and latest estimates for selected items. Using estimates of number on feed as an example, changes between the first estimate and the latest estimate during the past 24 months have averaged 13,000 head, ranging from 0 to 47,000 head. During this period the initial estimate has been above the latest estimate 12 times and has been below the latest estimate 7 times. This does not imply that the initial estimate is likely to understate or overstate final inventory.

Reliability of Monthly Cattle on Feed Estimates

[[Based on data for the past 24 months]]

Item	Root mean square error	90 percent confidence level	Difference between first and latest estimate				
			Average	Smallest	Largest	Months	
						Below latest	Above latest
	(percent)	(percent)	(1,000)	(1,000)	(1,000)	(number)	(number)
Number on feed	0.2	0.3	13	0	47	7	12
Placements	0.3	0.5	4	0	18	8	8
Marketings	0.3	0.5	3	0	20	6	6

Information Contacts

Listed below are the commodity specialists in the Livestock Branch of the National Agricultural Statistics Service to contact for additional information. E-mail inquiries may be sent to nass@nass.usda.gov

Dan Kerestes, Chief, Livestock Branch	(202) 720-3570
Scott Hollis, Head, Livestock Section	(202) 690-2424
Travis Averill – Cattle, Cattle on Feed	(202) 720-3040
Sherry Bertramsen – Livestock Slaughter	(515) 284-4340
Doug Bounds – Hogs and Pigs	(202) 720-3106
Jim Collom – Dairy Products	(202) 690-3236
Mike Miller – Milk Production and Milk Cows	(202) 720-3278
Vacant – Sheep and Goats	(202) 720-4751

Access to NASS Reports

For your convenience, you may access NASS reports and products the following ways:

- All reports are available electronically, at no cost, on the NASS web site: <http://www.nass.usda.gov>
- Both national and state specific reports are available via a free e-mail subscription. To set-up this free subscription, visit <http://www.nass.usda.gov> and in the “Follow NASS” box under “Receive reports by Email,” click on “National” or “State” to select the reports you would like to receive.
- Printed reports may be purchased from the National Technical Information Service (NTIS) by calling toll-free (800) 999-6779, or (703) 605-6220 if calling from outside the United States or Canada. Accepted methods of payment are Visa, MasterCard, check, or money order.

For more information on NASS surveys and reports, call the NASS Agricultural Statistics Hotline at (800) 727-9540, 7:30 a.m. to 4:00 p.m. ET, or e-mail: nass@nass.usda.gov.

The United States Department of Agriculture (USDA) prohibits discrimination in all its programs and activities on the basis of race, color, national origin, age, disability, and where applicable, sex, marital status, familial status, parental status, religion, sexual orientation, political beliefs, genetic information, reprisal, or because all or a part of an individual's income is derived from any public assistance program. (Not all prohibited bases apply to all programs.) Persons with disabilities who require alternative means for communication of program information (Braille, large print, audiotape, etc.) should contact USDA's TARGET Center at (202) 720-2600 (voice and TDD).

To file a complaint of discrimination, write to USDA, Assistant Secretary for Civil Rights, Office of the Assistant Secretary for Civil Rights, 1400 Independence Avenue, S.W., Stop 9410, Washington, DC 20250-9410, or call toll-free at (866) 632-9992 (English) or (800) 877-8339 (TDD) or (866) 377-8642 (English Federal-relay) or (800) 845-6136 (Spanish Federal-relay). USDA is an equal opportunity provider and employer.