



Cattle on Feed

ISSN: 1948-9080

Released September 19, 2014, by the National Agricultural Statistics Service (NASS), Agricultural Statistics Board, United States Department of Agriculture (USDA).

United States Cattle on Feed Down 1 Percent

Cattle and calves on feed for slaughter market in the United States for feedlots with capacity of 1,000 or more head totaled 9.8 million head on September 1, 2014. The inventory was 1 percent below September 1, 2013.

Placements in feedlots during August totaled 1.72 million, 3 percent below 2013. Net placements were 1.65 million head. During August, placements of cattle and calves weighing less than 600 pounds were 410,000, 600-699 pounds were 280,000, 700-799 pounds were 395,000, and 800 pounds and greater were 635,000. For the month of August placements are the lowest since the series began in 1996.

Marketings of fed cattle during August totaled 1.69 million, 10 percent below 2013. August marketings are the lowest since the series began in 1996.

Other disappearance totaled 66,000 during August, 32 percent above 2013.

Number of Cattle on Feed, Placements, Marketings, and Other Disappearance on 1,000+ Capacity Feedlots – United States: September 1, 2013 and 2014

Item	Number		Percent of previous year
	2013	2014	
	(1,000 head)	(1,000 head)	(percent)
On feed August 1	10,025	9,837	98
Placed on feed during August	1,772	1,720	97
Fed cattle marketed during August	1,871	1,692	90
Other disappearance during August	50	66	132
On feed September 1	9,876	9,799	99

Number of Cattle on Feed, Placements, Marketings, and Other Disappearance on 1,000+ Capacity Feedlots – United States: August 1, 2013 and 2014

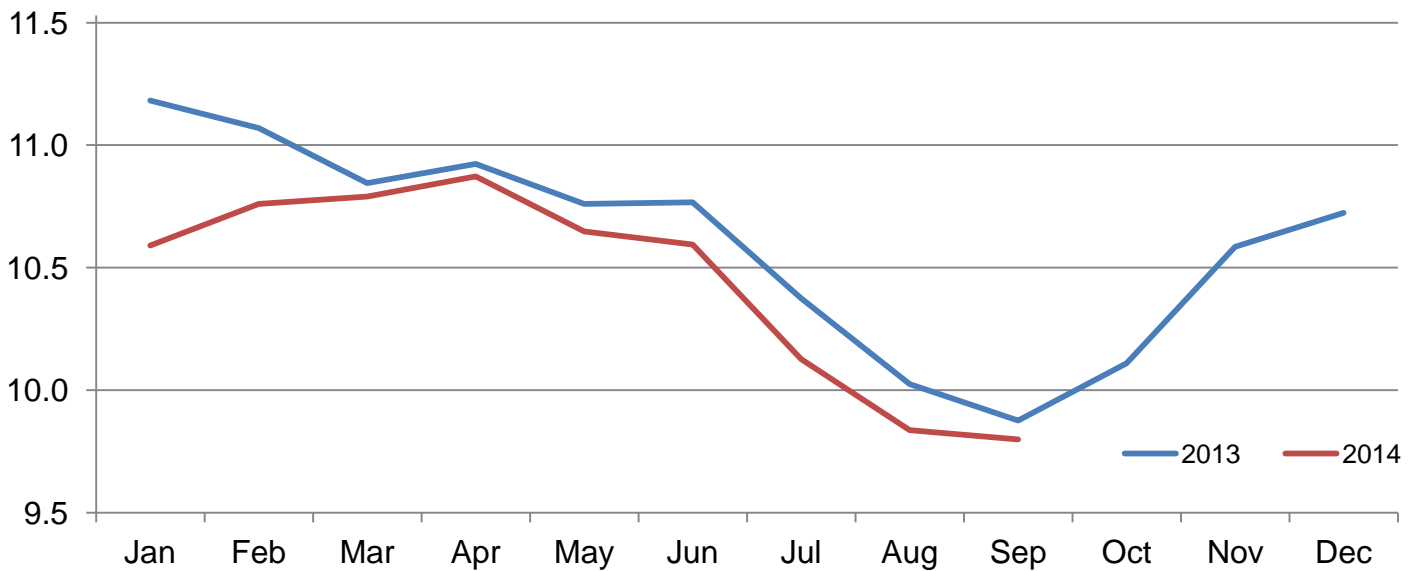
Item	Number		Percent of previous year
	2013	2014	
	(1,000 head)	(1,000 head)	(percent)
On feed July 1	10,375	10,127	98
Placed on feed during July	1,684	1,560	93
Fed cattle marketed during July	1,970	1,787	91
Other disappearance during July	64	63	98
On feed August 1	10,025	9,837	98

Number of Cattle on Feed on 1,000+ Capacity Feedlots by Month – States and United States: 2013 and 2014

State	September 1, 2013	August 1, 2014	September 1, 2014		
			Number	Percent of previous year	Percent of previous month
	(1,000 head)	(1,000 head)	(1,000 head)	(percent)	(percent)
Arizona	266	262	257	97	98
California	505	420	415	82	99
Colorado	830	810	800	96	99
Idaho	190	185	180	95	97
Iowa	550	600	580	105	97
Kansas	1,980	1,900	1,950	98	103
Minnesota	101	116	113	112	97
Nebraska	2,090	2,160	2,130	102	99
Oklahoma	280	240	245	88	102
South Dakota	170	190	185	109	97
Texas	2,430	2,470	2,450	101	99
Washington	184	189	199	108	105
Other States	300	295	295	98	100
United States	9,876	9,837	9,799	99	100

Cattle on Feed Inventory on 1,000+ Capacity Feedlots – United States

Million head

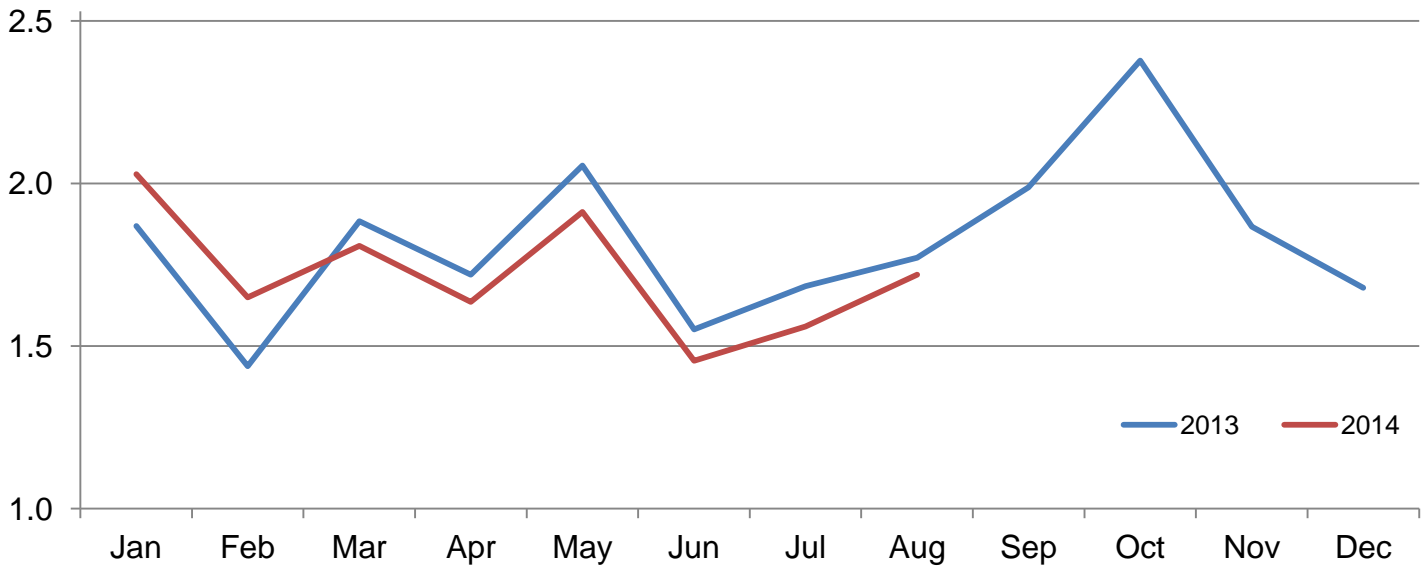


Number of Cattle Placed on Feed on 1,000+ Capacity Feedlots by Month – States and United States: 2013 and 2014

State	During August 2013 (1,000 head)	During July 2014 (1,000 head)	During August 2014		
			Number (1,000 head)	Percent of previous year (percent)	Percent of previous month (percent)
Arizona	23	23	21	91	91
California	55	39	40	73	103
Colorado	145	90	145	100	161
Idaho	52	37	33	63	89
Iowa	66	56	63	95	113
Kansas	380	400	410	108	103
Minnesota	13	10	15	115	150
Nebraska	440	375	425	97	113
Oklahoma	47	32	50	106	156
South Dakota	28	20	30	107	150
Texas	440	410	410	93	100
Washington	43	37	44	102	119
Other States	40	31	34	85	110
United States	1,772	1,560	1,720	97	110

Number of Cattle Placed on 1,000+ Capacity Feedlots – United States

Million head



Number of Cattle Placed on Feed by Weight Group on 1,000+ Capacity Feedlots by Month – States and United States: 2013 and 2014

State	During August									
	Under 600 lbs		600-699 lbs		700-799 lbs		800+ lbs		Total	
	2013	2014	2013	2014	2013	2014	2013	2014	2013	2014
	(1,000 head)	(1,000 head)	(1,000 head)	(1,000 head)	(1,000 head)	(1,000 head)	(1,000 head)	(1,000 head)	(1,000 head)	(1,000 head)
Colorado	25	30	20	15	45	35	55	65	145	145
Kansas	65	75	80	80	115	110	120	145	380	410
Nebraska	55	55	65	50	100	95	220	225	440	425
Texas	175	170	115	95	95	85	55	60	440	410
Other States	85	80	47	40	70	70	165	140	367	330
United States	405	410	327	280	425	395	615	635	1,772	1,720

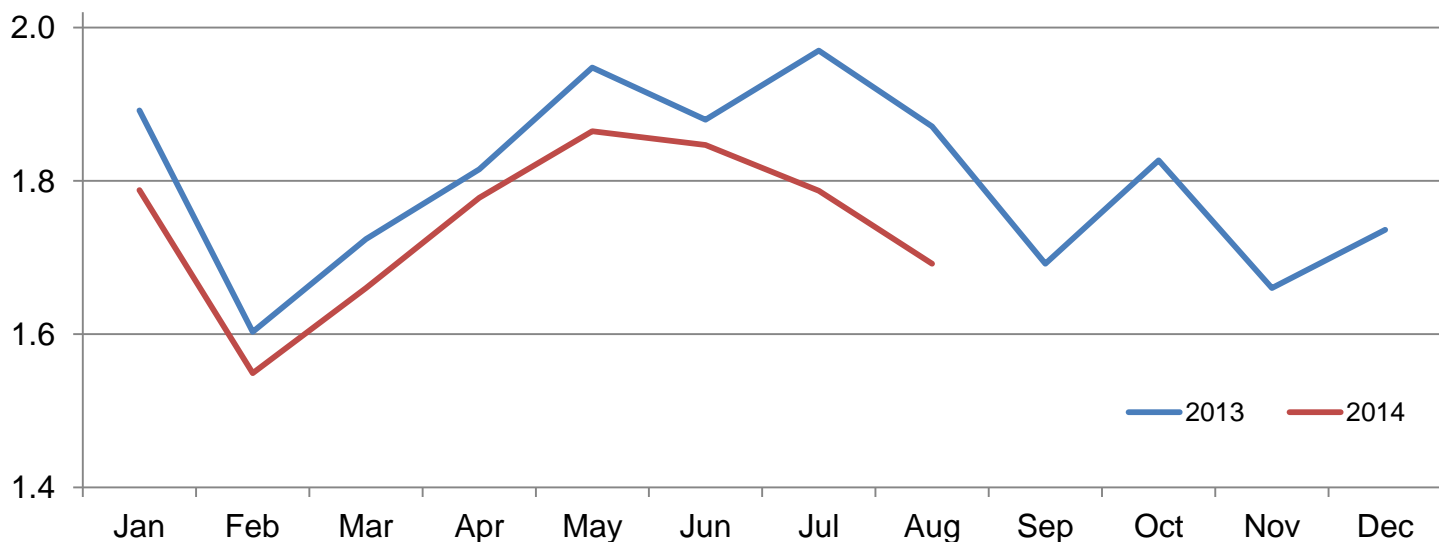
State	During July									
	Under 600 lbs		600-699 lbs		700-799 lbs		800+ lbs		Total	
	2013	2014	2013	2014	2013	2014	2013	2014	2013	2014
	(1,000 head)	(1,000 head)	(1,000 head)	(1,000 head)	(1,000 head)	(1,000 head)	(1,000 head)	(1,000 head)	(1,000 head)	(1,000 head)
Colorado	30	25	20	15	30	20	40	30	120	90
Kansas	60	80	75	70	140	110	150	140	425	400
Nebraska	45	55	55	50	90	85	180	185	370	375
Texas	165	185	75	85	125	85	85	55	450	410
Other States	90	80	45	40	60	55	124	110	319	285
United States	390	425	270	260	445	355	579	520	1,684	1,560

Number of Cattle Marketed on 1,000+ Capacity Feedlots by Month – States and United States: 2013 and 2014

State	During August 2013	During July 2014	During August 2014		
			Number	Percent of previous year	Percent of previous month
			(1,000 head)	(percent)	(percent)
Arizona	18	26	25	139	96
California	60	47	40	67	85
Colorado	180	145	150	83	103
Idaho	46	41	37	80	90
Iowa	73	74	80	110	108
Kansas	390	390	345	88	88
Minnesota	20	15	17	85	113
Nebraska	420	465	440	105	95
Oklahoma	51	46	44	86	96
South Dakota	37	39	34	92	87
Texas	490	415	415	85	100
Washington	47	40	33	70	83
Other States	39	44	32	82	73
United States	1,871	1,787	1,692	90	95

Number of Cattle Marketed on 1,000+ Capacity Feedlots – United States

Million head



Other Disappearance on 1,000+ Capacity Feedlots by Month – States and United States: 2013 and 2014

State	During August 2013 (1,000 head)	During July 2014 (1,000 head)	During August 2014		
			Number (1,000 head)	Percent of previous year (percent)	Percent of previous month (percent)
Arizona	1	7	1	100	14
California	5	7	5	100	71
Colorado	5	5	5	100	100
Idaho	1	1	1	100	100
Iowa	3	2	3	100	150
Kansas	10	10	15	150	150
Minnesota	1	1	1	100	100
Nebraska	10	10	15	150	150
Oklahoma	1	1	1	100	100
South Dakota	1	1	1	100	100
Texas	10	15	15	150	100
Washington	1	1	1	100	100
Other States	1	2	2	200	100
United States	50	63	66	132	105

Terms and Definitions of Cattle on Feed Estimates

Cattle on feed are animals being fed a ration of grain, silage, hay and/or protein supplement for slaughter market that are expected to produce a carcass that will grade select or better. It excludes cattle being "backgrounded only" for later sale as feeders or later placement in another feedlot.

Placements are cattle put into a feedlot, fed a ration which will produce a carcass that will grade select or better, and are intended for the slaughter market.

Marketings are cattle shipped out of feedlots to a slaughter market.

Other disappearance includes death loss, movement from feedlots to pasture, and shipments to other feedlots for further feeding.

Reliability of Cattle on Feed Estimates

Survey Procedures: During January and July all known feedlots in the United States with capacity of 1,000 or more head are surveyed to provide data for cattle on feed estimates. During the other months, all known feedlots from 16 States are surveyed. The 16 States account for approximately 98 percent of the cattle on feed in feedlots with capacity of 1,000 or more head. Individual State estimates are published monthly for 12 of the 16 States. Data collected from the remaining 4 States are used to establish the "Other States" estimates. These 4 States include Illinois, New Mexico, Oregon, and Wyoming. The "Other States" category represents all cattle on feed with a capacity of 1,000 or more head for the rest of the United States.

Estimating Procedures: These cattle on feed estimates were prepared by the Agricultural Statistics Board after reviewing recommendations and analysis submitted by each State office. Regional and State survey data were reviewed for reasonableness with each other and with estimates from the previous month when establishing the current estimates.

Revision Policy: Revisions to previous estimates are made to improve month to month relationships. Estimates for the previous month are subject to revision in all States each month when current estimates are made. In February, all monthly estimates for the previous year, and the number of feedlots and annual marketings from two years ago are reviewed and subject to revisions. The reviews are primarily based on slaughter data, state check-off or brand data, and any other data that may have been received after the original estimate was made. Estimates will also be reviewed after data from the Census of Agriculture are available. No revisions will be made after that date and estimates become final.

Reliability: Since all 1,000+ capacity cattle on feed operators in every State are not included in the monthly survey, survey estimates are subject to sampling variability. Survey results are also subject to non-sampling errors such as omissions, duplications, and mistakes in reporting, recording, and processing the data. The effects of these errors cannot be measured directly. They are minimized through rigid quality controls in the data collection process and through a careful review of all reported data for consistency and reasonableness.

To assist users in evaluating the reliability of estimates in this report, the "**Root Mean Square Error**" is shown for selected items in the table on the following page. The "Root Mean Square Error" is a statistical measure based on past performance and is computed using the differences between first and latest estimates. The "Root Mean Square Error" for cattle on feed inventory estimates over the past 24 months is 0.1 percent. This means that chances are 2 out of 3 that the final estimate will not be above or below the current estimate of 9.8 million head by more than 0.1 percent. Chances are 9 out of 10 that the difference will not exceed 0.2 percent.

The table on the following page shows a 24 month record of the range of differences between first and latest estimates for selected items. Using estimates of number on feed as an example, changes between the first estimate and the latest estimate during the past 24 months have averaged 9,000 head, ranging from 0 to 34,000 head. During this period the initial estimate has been above the latest estimate 8 times and has been below the latest estimate 9 times. This does not imply that the initial estimate is likely to understate or overstate final inventory.

Reliability of Monthly Cattle on Feed Estimates

[Based on data for the past 24 months]

Item	Root mean square error	90 percent confidence level	Difference between first and latest estimate				
			Average	Smallest	Largest	Months	
						Below latest	Above latest
	(percent)	(percent)	(1,000)	(1,000)	(1,000)	(number)	(number)
Number on feed	0.1	0.2	9	0	34	9	8
Placements	1.7	2.9	18	0	88	4	14
Marketings	1.5	2.5	17	0	67	0	13

Information Contacts

Listed below are the commodity specialists in the Livestock Branch of the National Agricultural Statistics Service to contact for additional information. E-mail inquiries may be sent to nass@nass.usda.gov.

Dan Kerestes, Chief, Livestock Branch	(202) 720-3570
Scott Hollis, Head, Livestock Section	(202) 690-2424
Travis Averill – Cattle, Cattle on Feed	(202) 720-3040
Doug Bounds – Hogs and Pigs	(202) 720-3106
Donnie Fike – Dairy Products	(202) 690-3236
Tiffany Hora – Livestock Slaughter	(515) 284-4340
Mike Miller – Milk Production and Milk Cows	(202) 720-3278
Evan Schulz – Sheep and Goats	(202) 720-6147

Access to NASS Reports

For your convenience, you may access NASS reports and products the following ways:

- All reports are available electronically, at no cost, on the NASS web site: <http://www.nass.usda.gov>
- Both national and state specific reports are available via a free e-mail subscription. To set-up this free subscription, visit <http://www.nass.usda.gov> and in the “Follow NASS” box under “Receive reports by Email,” click on “National” or “State” to select the reports you would like to receive.

For more information on NASS surveys and reports, call the NASS Agricultural Statistics Hotline at (800) 727-9540, 7:30 a.m. to 4:00 p.m. ET, or e-mail: nass@nass.usda.gov.

The U.S. Department of Agriculture (USDA) prohibits discrimination against its customers, employees, and applicants for employment on the basis of race, color, national origin, age, disability, sex, gender identity, religion, reprisal, and where applicable, political beliefs, marital status, familial or parental status, sexual orientation, or all or part of an individual's income is derived from any public assistance program, or protected genetic information in employment or in any program or activity conducted or funded by the Department. (Not all prohibited bases will apply to all programs and/or employment activities.)

If you wish to file a Civil Rights program complaint of discrimination, complete the [USDA Program Discrimination Complaint Form](#) (PDF), found online at http://www.ascr.usda.gov/complaint_filing_cust.html, or at any USDA office, or call (866) 632-9992 to request the form. You may also write a letter containing all of the information requested in the form. Send your completed complaint form or letter to us by mail at U.S. Department of Agriculture, Director, Office of Adjudication, 1400 Independence Avenue, S.W., Washington, D.C. 20250-9410, by fax (202) 690-7442 or email at program.intake@usda.gov.

USDA Data Users' Meeting
Monday, October 20, 2014

Crowne Plaza Chicago-Metro
Chicago, Illinois 60661
312-829-5000

The USDA's National Agricultural Statistics Service will be organizing an open forum for data users. The purpose will be to provide updates on pending changes in the various statistical and information programs and seek comments and input from data users. Other USDA agencies to be represented will include the Agricultural Marketing Service, the Economic Research Service, the Foreign Agricultural Service, and the World Agricultural Outlook Board. The Foreign Trade Division from the Census Bureau will also be included in the meeting.

For registration details or additional information for the Data Users' Meeting, see the NASS homepage at <http://www.nass.usda.gov/meeting/> or contact Rose Armstrong (NASS) at (202) 720-3896 or at rose.armstrong@nass.usda.gov.

This Data Users' Meeting precedes the Industry Outlook Conference that will be held at the same location on Tuesday, October 21, 2014. The outlook meeting brings together analysts from various commodity sectors to discuss the outlook situation. For registration details or additional information for the Industry Outlook Conference, see the conference webpage on the LMIC website: <http://www.lmic.info/IOC/>. Or call the Livestock Marketing Information Center (LMIC) at (303) 236-0460.