



---

Released October 19, 2012, by the National Agricultural Statistics Service (NASS), Agricultural Statistics Board, United States Department of Agriculture (USDA).

## United States Cattle on Feed Down 3 Percent

**Cattle and calves on feed** for slaughter market in the United States for feedlots with capacity of 1,000 or more head totaled 11.0 million head on October 1, 2012. The inventory was 3 percent below October 1, 2011. The inventory included 6.96 million steers and steer calves, up slightly from the previous year. This group accounted for 63 percent of the total inventory. Heifers and heifer calves accounted for 3.97 million head, down 8 percent from 2011.

**Placements** in feedlots during September totaled 2.00 million, 19 percent below 2011. This is the lowest cattle placements for the month of September since the series began in 1996. Net placements were 1.94 million head. During September, placements of cattle and calves weighing less than 600 pounds were 515,000, 600-699 pounds were 355,000, 700-799 pounds were 444,000, and 800 pounds and greater were 690,000.

**Marketings** of fed cattle during September totaled 1.60 million, 12 percent below 2011. This is the second lowest cattle marketings for the month of September since the series began in 1996.

**Other disappearance** totaled 64,000 during September, 14 percent below 2011.

**Number of Cattle on Feed, Placements, Marketings, and Other Disappearance on 1,000+ Capacity Feedlots – United States: October 1, 2011 and 2012**

Item	Number		Percent of previous year
	2011	2012	
	(1,000 head)	(1,000 head)	(percent)
On feed September 1 .....	10,700	10,647	100
Placed on feed during September .....	2,469	2,004	81
Fed cattle marketed during September .....	1,813	1,598	88
Other disappearance during September .....	74	64	86
On feed October 1 .....	11,282	10,989	97

**Number of Cattle on Feed, Placements, Marketings, and Other Disappearance on 1,000+ Capacity Feedlots – United States: September 1, 2011 and 2012**

Item	Number		Percent of previous year
	2011	2012	
	(1,000 head)	(1,000 head)	(percent)
On feed August 1 .....	10,579	10,656	101
Placed on feed during August .....	2,246	2,007	89
Fed cattle marketed during August .....	2,053	1,955	95
Other disappearance during August .....	72	61	85
On feed September 1 .....	10,700	10,647	100

**Number on Feed by Class on 1,000+ Capacity Feedlots – United States: October 1, 2011 and 2012**

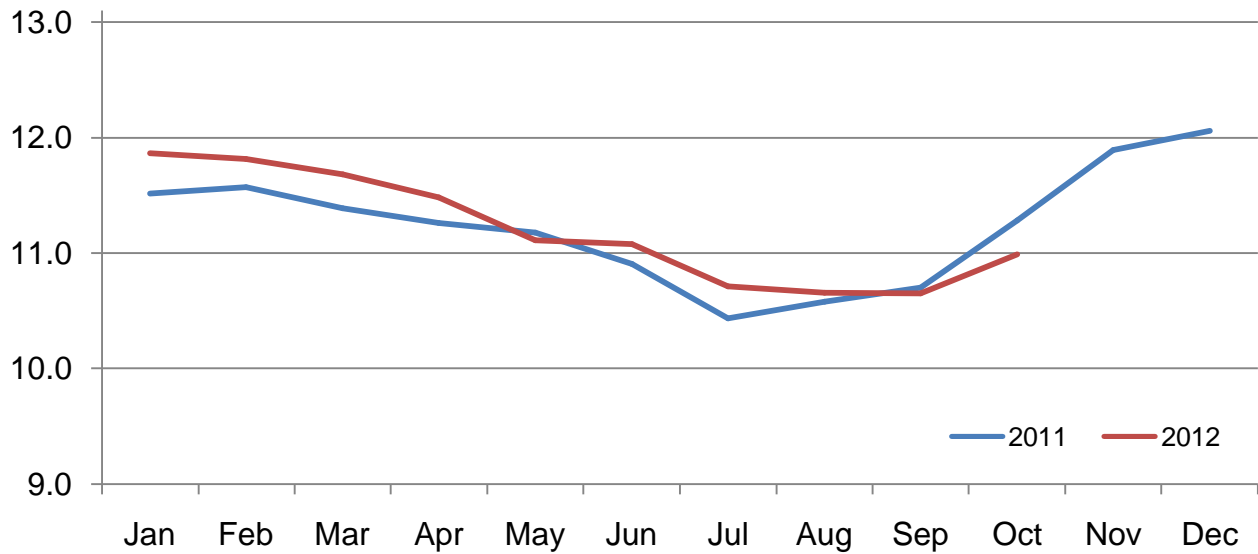
Item	Number		Percent of previous year
	2011	2012	
	(1,000 Head)	(1,000 Head)	(percent)
Class on Feed October 1			
Steers and Steer Calves .....	6,935	6,960	100
Heifers and Heifer Calves .....	4,298	3,967	92
Cows and Bulls .....	49	62	127

**Number of Cattle on Feed on 1,000+ Capacity Feedlots by Month – States and United States: 2011 and 2012**

State	October 1, 2011	September 1, 2012	October 1, 2012		
			Number	Percent of previous year	Percent of previous month
	(1,000 head)	(1,000 head)	(1,000 head)	(percent)	(percent)
Arizona .....	280	271	272	97	100
California .....	490	480	475	97	99
Colorado .....	1,070	930	1,000	93	108
Idaho .....	220	205	230	105	112
Iowa .....	550	590	590	107	100
Kansas .....	2,320	2,180	2,230	96	102
Nebraska .....	2,210	2,240	2,330	105	104
Oklahoma .....	370	325	335	91	103
South Dakota .....	205	185	195	95	105
Texas .....	2,940	2,620	2,680	91	102
Washington .....	208	208	213	102	102
Other States .....	419	413	439	105	106
United States .....	11,282	10,647	10,989	97	103

**Cattle on Feed Inventory on 1,000+ Capacity Feedlots – United States**

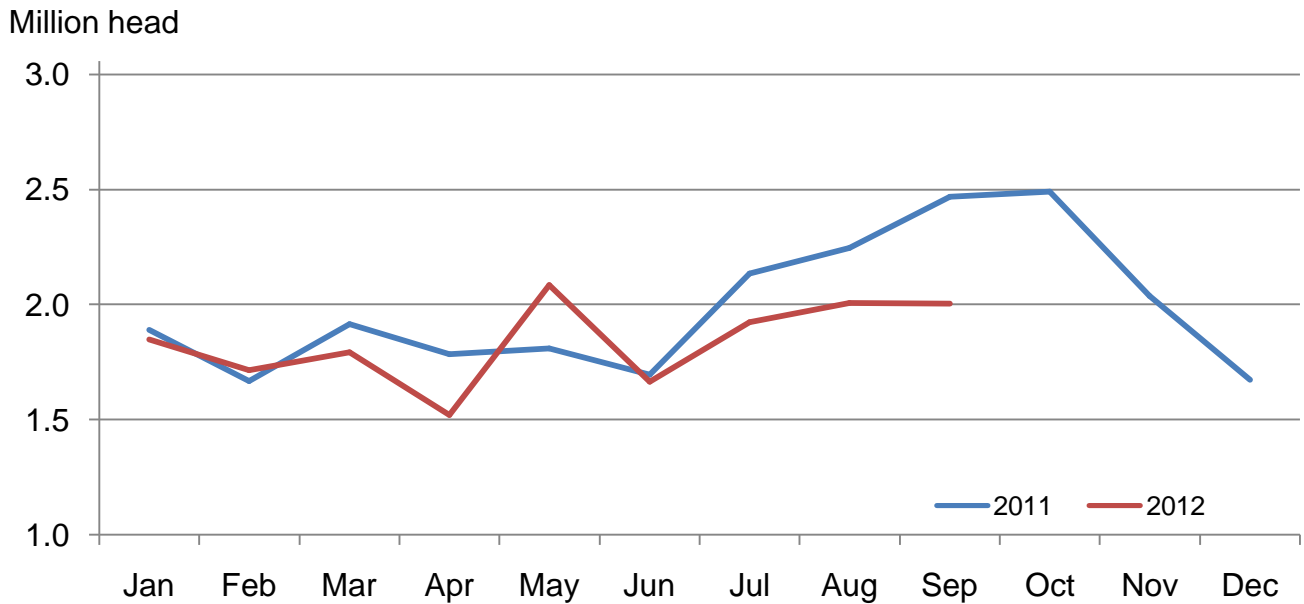
Million head



**Number of Cattle Placed on Feed on 1,000+ Capacity Feedlots by Month – States and United States: 2011 and 2012**

State	During September 2011 (1,000 head)	During August 2012 (1,000 head)	During September 2012		
			Number (1,000 head)	Percent of previous year (percent)	Percent of previous month (percent)
Arizona .....	19	18	20	105	111
California .....	70	63	50	71	79
Colorado .....	275	190	225	82	118
Idaho .....	67	53	61	91	115
Iowa .....	115	76	89	77	117
Kansas .....	500	435	375	75	86
Nebraska .....	560	470	470	84	100
Oklahoma .....	88	67	57	65	85
South Dakota .....	51	34	50	98	147
Texas .....	560	495	480	86	97
Washington .....	54	47	46	85	98
Other States .....	110	59	81	74	137
United States .....	2,469	2,007	2,004	81	100

**Number of Cattle Placed on 1000+ Capacity Feedlots – United States**



**Number of Cattle Placed on Feed by Weight Group on 1,000+ Capacity Feedlots by Month – States and United States: 2011 and 2012**

State	During September									
	Under 600 lbs		600-699 lbs		700-799 lbs		800+ lbs		Total	
	2011	2012	2011	2012	2011	2012	2011	2012	2011	2012
	(1,000 head)	(1,000 head)	(1,000 head)	(1,000 head)	(1,000 head)	(1,000 head)	(1,000 head)	(1,000 head)	(1,000 head)	(1,000 head)
Colorado .....	40	40	25	20	60	55	150	110	275	225
Kansas .....	120	80	110	85	140	105	130	105	500	375
Nebraska .....	100	90	80	60	110	100	270	220	560	470
Texas .....	280	185	125	130	85	100	70	65	560	480
Other States .....	145	120	75	60	109	84	245	190	574	454
United States .....	685	515	415	355	504	444	865	690	2,469	2,004

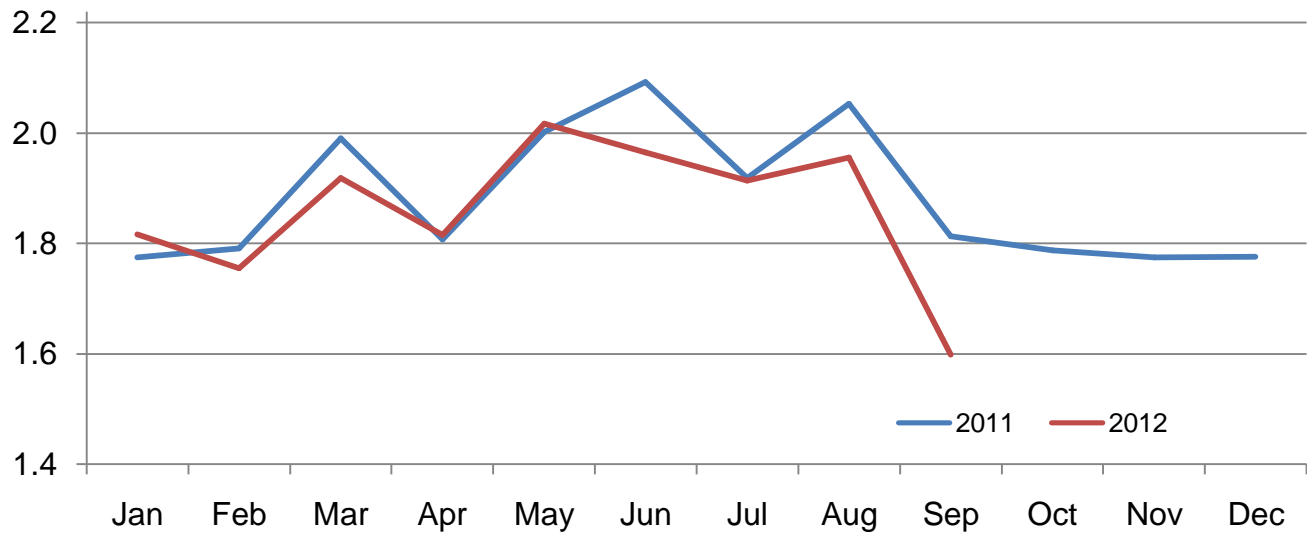
State	During August									
	Under 600 lbs		600-699 lbs		700-799 lbs		800+ lbs		Total	
	2011	2012	2011	2012	2011	2012	2011	2012	2011	2012
	(1,000 head)	(1,000 head)	(1,000 head)	(1,000 head)	(1,000 head)	(1,000 head)	(1,000 head)	(1,000 head)	(1,000 head)	(1,000 head)
Colorado .....	45	30	30	25	45	50	110	85	230	190
Kansas .....	105	80	105	105	165	120	145	130	520	435
Nebraska .....	90	70	65	75	100	120	190	205	445	470
Texas .....	365	200	115	120	85	110	55	65	620	495
Other States .....	110	102	50	60	81	75	190	180	431	417
United States .....	715	482	365	385	476	475	690	665	2,246	2,007

**Number of Cattle Marketed on 1,000+ Capacity Feedlots by Month – States and United States: 2011 and 2012**

State	During September 2011	During August 2012	During September 2012		
			Number	Percent of previous year	Percent of previous month
			(1,000 head)	(percent)	(percent)
Arizona .....	21	20	18	86	90
California .....	49	55	52	106	95
Colorado .....	185	195	150	81	77
Idaho .....	41	37	35	85	95
Iowa .....	92	84	87	95	104
Kansas .....	375	405	310	83	77
Nebraska .....	350	445	370	106	83
Oklahoma .....	79	60	45	57	75
South Dakota .....	35	38	39	111	103
Texas .....	490	510	400	82	78
Washington .....	38	48	40	105	83
Other States .....	58	58	52	90	90
United States .....	1,813	1,955	1,598	88	82

## Number of Cattle Marketed on 1,000+ Capacity Feedlots – United States

Million head



### Other Disappearance on 1,000+ Capacity Feedlots by Month – States and United States: 2011 and 2012

State	During September 2011 (1,000 head)	During August 2012 (1,000 head)	During September 2012		
			Number (1,000 head)	Percent of previous year (percent)	Percent of previous month (percent)
Arizona .....	1	1	1	100	100
California .....	6	3	3	50	100
Colorado .....	10	5	5	50	100
Idaho .....	1	1	1	100	100
Iowa .....	3	2	2	67	100
Kansas .....	15	10	15	100	150
Nebraska .....	10	15	10	100	67
Oklahoma .....	4	2	2	50	100
South Dakota .....	1	1	1	100	100
Texas .....	20	15	20	100	133
Washington .....	1	1	1	100	100
Other States .....	2	5	3	150	60
United States .....	74	61	64	86	105

**Number on Feed by Class on 1,000+ Capacity Feedlots by Quarter – States and United States: 2011 and 2012**

State	Steers and steer calves			Heifers and heifer calves			Cows and bulls		
	Oct 1, 2011	Jul 1, 2012	Oct 1, 2012	Oct 1, 2011	Jul 1, 2012	Oct 1, 2012	Oct 1, 2011	Jul 1, 2012	Oct 1, 2012
	(1,000 Head)	(1,000 Head)	(1,000 Head)	(1,000 Head)	(1,000 Head)	(1,000 Head)	(1,000 Head)	(1,000 Head)	(1,000 Head)
Arizona .....	277	265	268	3	14	4	0	0	0
California .....	425	415	410	63	64	65	2	1	0
Colorado .....	730	645	670	335	320	325	5	5	5
Idaho .....	136	127	137	82	69	89	2	4	4
Iowa .....	380	445	415	169	175	175	1	0	0
Kansas .....	1,220	1,070	1,200	1,090	975	1,025	10	5	5
Nebraska .....	1,290	1,360	1,400	905	890	900	15	20	30
Oklahoma .....	205	200	225	165	120	110	0	0	0
South Dakota .....	114	121	108	81	71	75	10	18	12
Texas .....	1,750	1,630	1,690	1,189	1,039	989	1	1	1
Washington .....	123	133	137	83	76	74	2	1	2
Other States .....	285	325	300	133	105	136	1	1	3
United States .....	6,935	6,736	6,960	4,298	3,918	3,967	49	56	62

## Terms and Definitions of Cattle on Feed Estimates

**Cattle on feed** are animals being fed a ration of grain, silage, hay and/or protein supplement for slaughter market that are expected to produce a carcass that will grade select or better. It excludes cattle being "backgrounded only" for later sale as feeders or later placement in another feedlot.

**Placements** are cattle put into a feedlot, fed a ration which will produce a carcass that will grade select or better, and are intended for the slaughter market.

**Marketings** are cattle shipped out of feedlots to a slaughter market.

**Other disappearance** includes death loss, movement from feedlots to pasture, and shipments to other feedlots for further feeding.

## Reliability of Cattle on Feed Estimates

**Survey Procedures:** During January and July all known feedlots in the United States with capacity of 1,000 or more head are surveyed to provide data for cattle on feed estimates. During the other months, all known feedlots from 16 States are surveyed. The 16 States account for approximately 98 percent of the cattle on feed in feedlots with capacity of 1,000 or more head. Individual State estimates are published monthly for 11 of the 16 States. Data collected from the remaining 5 States are used to establish the "Other States" estimates. These 5 States include Illinois, Minnesota, New Mexico, Oregon, and Wyoming. The "Other States" category represents all cattle on feed with a capacity of 1,000 or more head for the rest of the United States.

**Estimating Procedures:** These cattle on feed estimates were prepared by the Agricultural Statistics Board after reviewing recommendations and analysis submitted by each State office. Regional and State survey data were reviewed for reasonableness with each other and with estimates from the previous month when establishing the current estimates.

**Revision Policy:** Revisions to previous estimates are made to improve month to month relationships. Estimates for the previous month are subject to revision in all States each month when current estimates are made. In February, all monthly estimates for the previous year, and the number of feedlots and annual marketings from two years ago are reviewed and subject to revisions. The reviews are primarily based on slaughter data, state check-off or brand data, and any other data that may have been received after the original estimate was made. Estimates will also be reviewed after data from the Census of Agriculture are available. No revisions will be made after that date and estimates become final.

**Reliability:** Since all 1,000+ capacity cattle on feed operators in every State are not included in the monthly survey, survey estimates are subject to sampling variability. Survey results are also subject to non-sampling errors such as omissions, duplications, and mistakes in reporting, recording, and processing the data. The effects of these errors cannot be measured directly. They are minimized through rigid quality controls in the data collection process and through a careful review of all reported data for consistency and reasonableness.

To assist users in evaluating the reliability of estimates in this report, the "**Root Mean Square Error**" is shown for selected items in the table on the following page. The "Root Mean Square Error" is a statistical measure based on past performance and is computed using the differences between first and latest estimates. The "Root Mean Square Error" for cattle on feed inventory estimates over the past 24 months is 0.2 percent. This means that chances are 2 out of 3 that the final estimate will not be above or below the current estimate of 11.0 million head by more than 0.1 percent. Chances are 9 out of 10 that the difference will not exceed 0.3 percent.

The table on the following page shows a 24 month record of the range of differences between first and latest estimates for selected items. Using estimates of number on feed as an example, changes between the first estimate and the latest estimate during the past 24 months have averaged 13,000 head, ranging from 0 to 47,000 head. During this period the initial estimate has been above the latest estimate 13 times and has been below the latest estimate 4 times. This does not imply that the initial estimate is likely to understate or overstate final inventory.



## Reliability of Monthly Cattle on Feed Estimates

[[Based on data for the past 24 months]]

Item	Root mean square error	90 percent confidence level	Difference between first and latest estimate				
			Average	Smallest	Largest	Months	
						Below latest	Above latest
	(percent)	(percent)	(1,000)	(1,000)	(1,000)	(number)	(number)
Number on feed .....	0.2	0.3	13	0	47	4	13
Placements .....	0.3	0.5	3	0	18	6	9
Marketings .....	0.3	0.5	3	0	20	7	5

## Information Contacts

Listed below are the commodity specialists in the Livestock Branch of the National Agricultural Statistics Service to contact for additional information. E-mail inquiries may be sent to [nass@nass.usda.gov](mailto:nass@nass.usda.gov)

Dan Kerestes, Chief, Livestock Branch .....	(202) 720-3570
Scott Hollis, Head, Livestock Section .....	(202) 690-2424
Travis Averill – Cattle, Cattle on Feed .....	(202) 720-3040
Sherry Bertramsen – Livestock Slaughter .....	(515) 284-4340
Doug Bounds – Hogs and Pigs .....	(202) 720-3106
Donnie Fike – Dairy Products .....	(202) 690-3236
Mike Miller – Milk Production and Milk Cows .....	(202) 720-3278
Alissa Cowell-Mytar – Sheep and Goats .....	(202) 720-4751

## Access to NASS Reports

For your convenience, you may access NASS reports and products the following ways:

- All reports are available electronically, at no cost, on the NASS web site: <http://www.nass.usda.gov>
- Both national and state specific reports are available via a free e-mail subscription. To set-up this free subscription, visit <http://www.nass.usda.gov> and in the “Follow NASS” box under “Receive reports by Email,” click on “National” or “State” to select the reports you would like to receive.

For more information on NASS surveys and reports, call the NASS Agricultural Statistics Hotline at (800) 727-9540, 7:30 a.m. to 4:00 p.m. ET, or e-mail: [nass@nass.usda.gov](mailto:nass@nass.usda.gov).

The United States Department of Agriculture (USDA) prohibits discrimination in all its programs and activities on the basis of race, color, national origin, age, disability, and where applicable, sex, marital status, familial status, parental status, religion, sexual orientation, political beliefs, genetic information, reprisal, or because all or a part of an individual's income is derived from any public assistance program. (Not all prohibited bases apply to all programs.) Persons with disabilities who require alternative means for communication of program information (Braille, large print, audiotape, etc.) should contact USDA's TARGET Center at (202) 720-2600 (voice and TDD).

To file a complaint of discrimination, write to USDA, Assistant Secretary for Civil Rights, Office of the Assistant Secretary for Civil Rights, 1400 Independence Avenue, S.W., Stop 9410, Washington, DC 20250-9410, or call toll-free at (866) 632-9992 (English) or (800) 877-8339 (TDD) or (866) 377-8642 (English Federal-relay) or (800) 845-6136 (Spanish Federal-relay). USDA is an equal opportunity provider and employer.