



Cattle on Feed

ISSN: 1948-9080

Released July 20, 2012, by the National Agricultural Statistics Service (NASS), Agricultural Statistics Board, United States Department of Agriculture (USDA).

United States Cattle on Feed Up 3 Percent

Cattle and calves on feed for slaughter market in the United States for feedlots with capacity of 1,000 or more head totaled 10.7 million head on July 1, 2012. The inventory was 3 percent above July 1, 2011. The inventory included 6.74 million steers and steer calves, up 4 percent from the previous year. This group accounted for 63 percent of the total inventory. Heifers and heifer calves accounted for 3.92 million head, up 1 percent from 2011.

Placements in feedlots during June totaled 1.66 million, 2 percent below 2011. Net placements were 1.60 million head. During June, placements of cattle and calves weighing less than 600 pounds were 460,000, 600-699 pounds were 320,000, 700-799 pounds were 390,000, and 800 pounds and greater were 494,000.

Marketings of fed cattle during June totaled 1.97 million, 6 percent below 2011. This is the lowest fed cattle marketings for the month of June since the series began in 1996.

Other disappearance totaled 66,000 during June, 8 percent below 2011.

United States All Cattle on Feed Up 1 Percent

Cattle on feed July 1, 2012, from all feedlots in the United States, totaled 12.3 million, up 1 percent from the 12.2 million on July 1, 2011. Cattle on feed in feedlots with 1,000 or more head accounted for 87 percent of the total cattle on feed on July 1, 2012, up from 86 percent last year.

Number of Cattle on Feed, Placements, Marketings, and Other Disappearance on 1,000+ Capacity Feedlots – United States: July 1, 2011 and 2012

Item	Number		Percent of previous year
	2011	2012	
	(1,000 head)	(1,000 head)	(percent)
On feed June 1	10,902	11,077	102
Placed on feed during June	1,695	1,664	98
Fed cattle marketed during June	2,092	1,965	94
Other disappearance during June	72	66	92
On feed July 1	10,433	10,710	103

Number of Cattle on Feed, Placements, Marketings, and Other Disappearance on 1,000+ Capacity Feedlots – United States: June 1, 2011 and 2012

Item	Number		Percent of previous year
	2011	2012	
	(1,000 head)	(1,000 head)	(percent)
On feed May 1	11,175	11,110	99
Placed on feed during May	1,810	2,084	115
Fed cattle marketed during May	2,002	2,017	101
Other disappearance during May	81	100	123
On feed June 1	10,902	11,077	102

Number on Feed by Class on 1,000+ Capacity Feedlots – United States: July 1, 2011 and 2012

Item	Number		Percent of previous year
	2011	2012	
	(1,000 Head)	(1,000 Head)	(percent)
Class on Feed July 1			
Steers and Steer Calves	6,502	6,736	104
Heifers and Heifer Calves	3,890	3,918	101
Cows and Bulls	41	56	137

Total Number on Feed – United States: July 1, 2011 and 2012

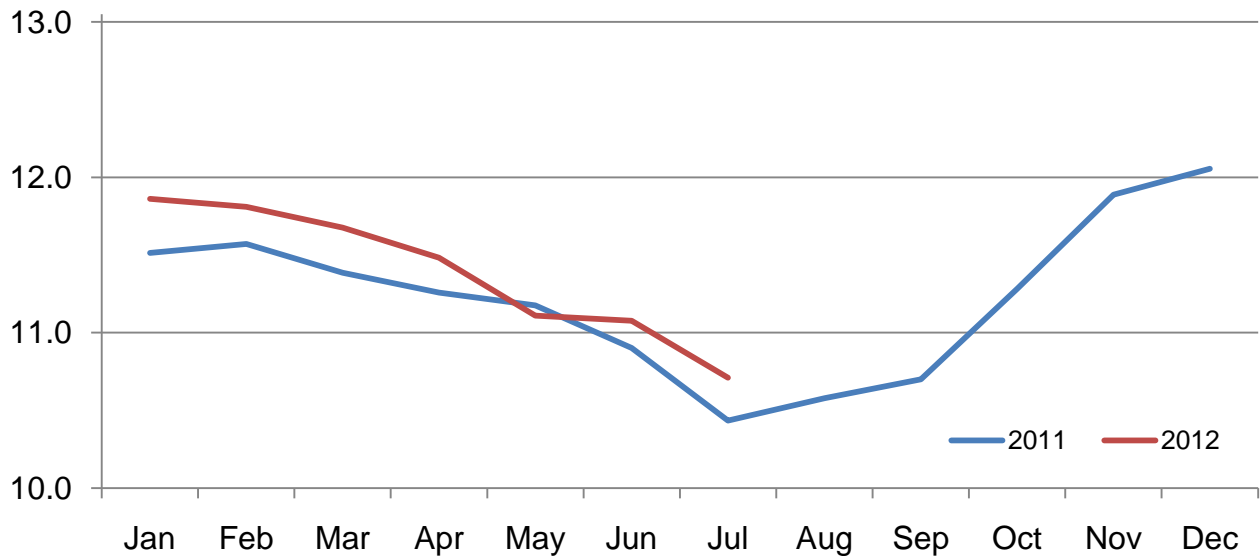
State	Number		Percent of previous year
	2011	2012	
	(1,000 Head)	(1,000 Head)	(percent)
United States	12,200	12,300	101

Number of Cattle on Feed on 1,000+ Capacity Feedlots by Month – States and United States: 2011 and 2012

State	July 1, 2011	June 1, 2012	July 1, 2012		
			Number	Percent of previous year	Percent of previous month
	(1,000 head)	(1,000 head)	(1,000 head)	(percent)	(percent)
Arizona	287	282	279	97	99
California	470	490	480	102	98
Colorado	1,000	1,020	970	97	95
Idaho	215	210	200	93	95
Iowa	590	640	620	105	97
Kansas	2,030	2,090	2,050	101	98
Nebraska	2,020	2,360	2,270	112	96
Oklahoma	350	320	320	91	100
South Dakota	210	230	210	100	91
Texas	2,690	2,770	2,670	99	96
Washington	192	220	210	109	95
Other States	379	445	431	114	97
United States	10,433	11,077	10,710	103	97

Cattle on Feed Inventory on 1,000+ Capacity Feedlots – United States

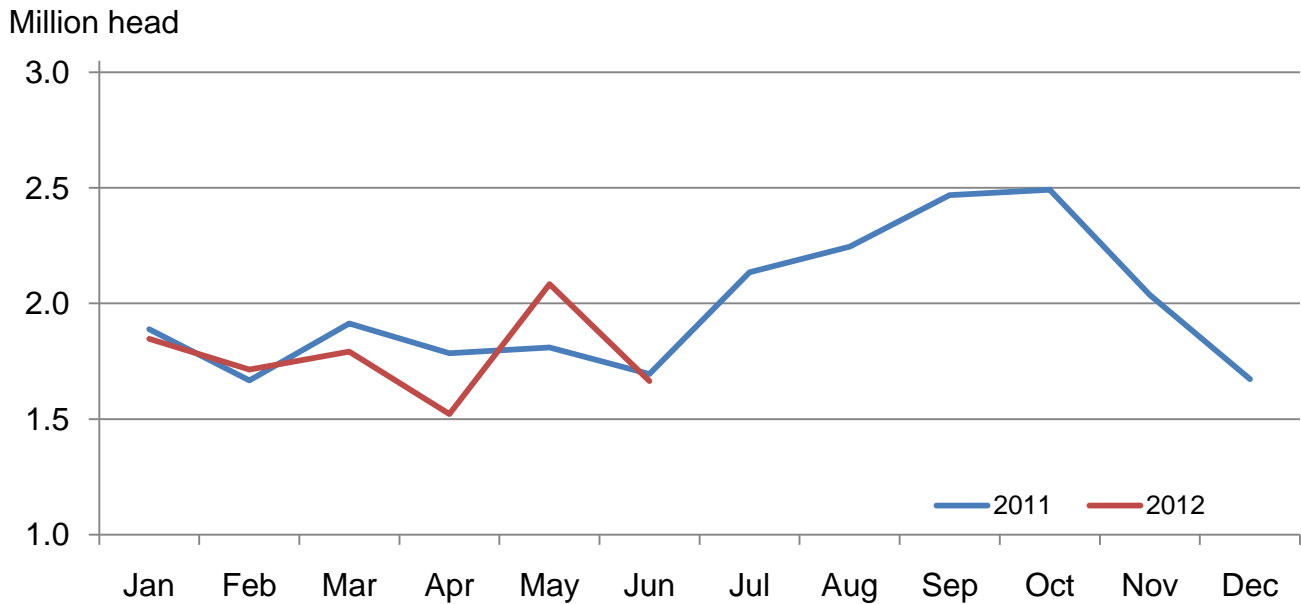
Million head



Number of Cattle Placed on Feed on 1,000+ Capacity Feedlots by Month – States and United States: 2011 and 2012

State	During June 2011	During May 2012	During June 2012		
			Number	Percent of previous year	Percent of previous month
	(1,000 head)	(1,000 head)	(1,000 head)	(percent)	(percent)
Arizona	25	36	28	112	78
California	70	70	49	70	70
Colorado	105	180	125	119	69
Idaho	34	29	34	100	117
Iowa	64	59	61	95	103
Kansas	390	445	390	100	88
Nebraska	310	460	385	124	84
Oklahoma	62	81	53	85	65
South Dakota	31	35	28	90	80
Texas	500	580	420	84	72
Washington	41	43	36	88	84
Other States	63	66	55	87	83
United States	1,695	2,084	1,664	98	80

Number of Cattle Placed on 1,000+ Capacity Feedlots – United States



Number of Cattle Placed on Feed by Weight Group on 1,000+ Capacity Feedlots by Month – States and United States: 2011 and 2012

State	During June									
	Under 600 lbs		600-699 lbs		700-799 lbs		800+ lbs		Total	
	2011	2012	2011	2012	2011	2012	2011	2012	2011	2012
	(1,000 head)	(1,000 head)	(1,000 head)	(1,000 head)	(1,000 head)	(1,000 head)	(1,000 head)	(1,000 head)	(1,000 head)	(1,000 head)
Colorado	20	25	25	20	30	40	30	40	105	125
Kansas	75	95	95	80	120	110	100	105	390	390
Nebraska	50	70	60	70	70	90	130	155	310	385
Texas	210	180	130	100	120	75	40	65	500	420
Other States	105	90	70	50	80	75	135	129	390	344
United States	460	460	380	320	420	390	435	494	1,695	1,664

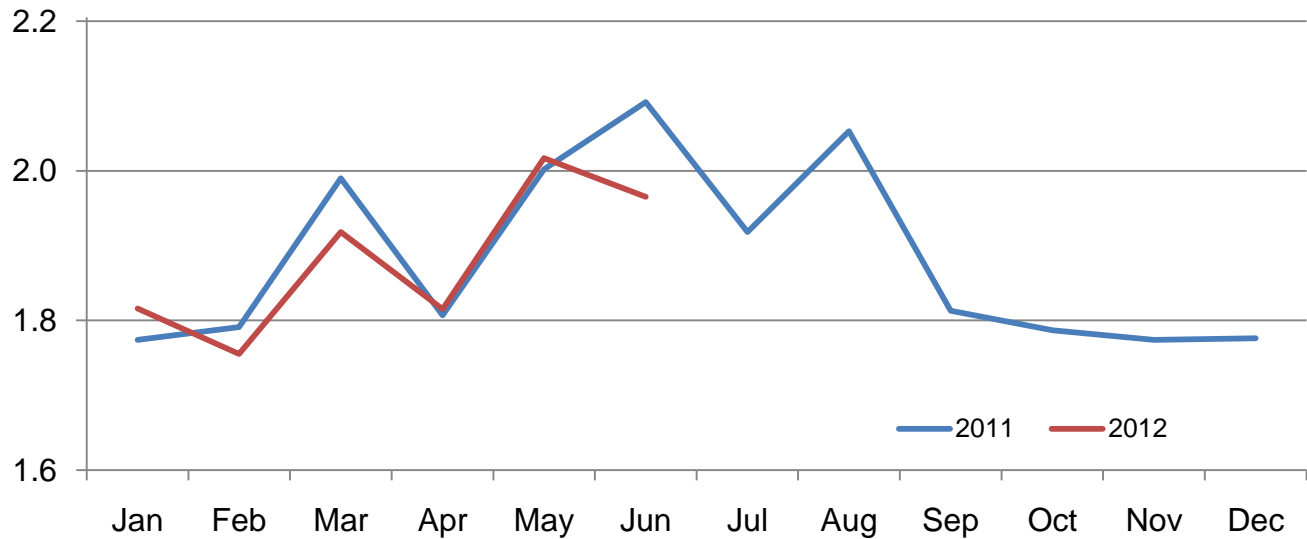
State	During May									
	Under 600 lbs		600-699 lbs		700-799 lbs		800+ lbs		Total	
	2011	2012	2011	2012	2011	2012	2011	2012	2011	2012
	(1,000 head)	(1,000 head)	(1,000 head)	(1,000 head)	(1,000 head)	(1,000 head)	(1,000 head)	(1,000 head)	(1,000 head)	(1,000 head)
Colorado	30	35	25	30	35	45	50	70	140	180
Kansas	65	90	70	90	110	130	130	135	375	445
Nebraska	50	70	55	60	80	130	155	200	340	460
Texas	170	220	150	125	165	140	75	95	560	580
Other States	100	105	55	60	90	85	150	169	395	419
United States	415	520	355	365	480	530	560	669	1,810	2,084

Number of Cattle Marketed on 1,000+ Capacity Feedlots by Month – States and United States: 2011 and 2012

State	During June 2011	During May 2012	During June 2012		
			Number	Percent of previous year	Percent of previous month
	(1,000 head)	(1,000 head)	(1,000 head)	(percent)	(percent)
Arizona	27	29	30	111	103
California	58	53	56	97	106
Colorado	175	170	170	97	100
Idaho	47	32	43	91	134
Iowa	80	64	77	96	120
Kansas	460	415	415	90	100
Nebraska	465	540	465	100	86
Oklahoma	65	54	51	78	94
South Dakota	46	45	47	102	104
Texas	560	500	500	89	100
Washington	39	46	45	115	98
Other States	70	69	66	94	96
United States	2,092	2,017	1,965	94	97

Number of Cattle Marketed on 1,000+ Capacity Feedlots – United States

Million head



Other Disappearance on 1,000+ Capacity Feedlots by Month – States and United States: 2011 and 2012

State	During June 2011 (1,000 head)	During May 2012 (1,000 head)	During June 2012		
			Number (1,000 head)	Percent of previous year (percent)	Percent of previous month (percent)
Arizona	1	1	1	100	100
California	2	2	3	150	150
Colorado	10	20	5	50	25
Idaho	2	2	1	50	50
Iowa	4	5	4	100	80
Kansas	10	20	15	150	75
Nebraska	15	20	10	67	50
Oklahoma	2	2	2	100	100
South Dakota	10	5	1	10	20
Texas	10	20	20	200	100
Washington	3	1	1	33	100
Other States	3	2	3	100	150
United States	72	100	66	92	66

Number on Feed by Class on 1,000+ Capacity Feedlots by Quarter – States and United States: 2011 and 2012

State	Steers and steer calves			Heifers and heifer calves			Cows and bulls		
	Jul 1, 2011	Apr 1, 2012	Jul 1, 2012	Jul 1, 2011	Apr 1, 2012	Jul 1, 2012	Jul 1, 2011	Apr 1, 2012	Jul 1, 2012
	(1,000 Head)	(1,000 Head)	(1,000 Head)	(1,000 Head)	(1,000 Head)	(1,000 Head)	(1,000 Head)	(1,000 Head)	(1,000 Head)
Arizona	283	274	265	4	4	14	0	0	0
California	410	425	415	60	65	64	0	0	1
Colorado	690	730	645	305	335	320	5	5	5
Idaho	110	131	127	104	92	69	1	2	4
Iowa	410	480	445	180	189	175	0	1	0
Kansas	1,070	1,180	1,070	955	985	975	5	5	5
Nebraska	1,190	1,530	1,360	820	980	890	10	20	20
Oklahoma	210	200	200	140	120	120	0	0	0
South Dakota	107	138	121	86	100	71	17	17	18
Texas	1,630	1,610	1,630	1,059	1,169	1,039	1	1	1
Washington	120	143	133	71	88	76	1	2	1
Other States	272	333	325	106	127	105	1	1	1
United States	6,502	7,174	6,736	3,890	4,254	3,918	41	54	56

Terms and Definitions of Cattle on Feed Estimates

Cattle on feed are animals being fed a ration of grain, silage, hay and/or protein supplement for slaughter market that are expected to produce a carcass that will grade select or better. It excludes cattle being "backgrounded only" for later sale as feeders or later placement in another feedlot.

Placements are cattle put into a feedlot, fed a ration which will produce a carcass that will grade select or better, and are intended for the slaughter market.

Marketings are cattle shipped out of feedlots to a slaughter market.

Other disappearance includes death loss, movement from feedlots to pasture, and shipments to other feedlots for further feeding.

Reliability of Cattle on Feed Estimates

Survey Procedures: During January and July all known feedlots in the United States with capacity of 1,000 or more head are surveyed to provide data for cattle on feed estimates. During the other months, all known feedlots from 16 States are surveyed. The 16 States account for approximately 98 percent of the cattle on feed in feedlots with capacity of 1,000 or more head. Individual State estimates are published monthly for 11 of the 16 States. Data collected from the remaining 5 States are used to establish the "Other States" estimates. These 5 States include Illinois, Minnesota, New Mexico, Oregon, and Wyoming. The "Other States" category represents all cattle on feed with a capacity of 1,000 or more head for the rest of the United States.

Estimating Procedures: These cattle on feed estimates were prepared by the Agricultural Statistics Board after reviewing recommendations and analysis submitted by each State office. Regional and State survey data were reviewed for reasonableness with each other and with estimates from the previous month when establishing the current estimates.

Revision Policy: Revisions to previous estimates are made to improve month to month relationships. Estimates for the previous month are subject to revision in all States each month when current estimates are made. In February, all monthly estimates for the previous year, and the number of feedlots and annual marketings from two years ago are reviewed and subject to revisions. The reviews are primarily based on slaughter data, state check-off or brand data, and any other data that may have been received after the original estimate was made. Estimates will also be reviewed after data from the Census of Agriculture are available. No revisions will be made after that date and estimates become final.

Reliability: Since all 1,000+ capacity cattle on feed operators in every State are not included in the monthly survey, survey estimates are subject to sampling variability. Survey results are also subject to non-sampling errors such as omissions, duplications, and mistakes in reporting, recording, and processing the data. The effects of these errors cannot be measured directly. They are minimized through rigid quality controls in the data collection process and through a careful review of all reported data for consistency and reasonableness.

To assist users in evaluating the reliability of estimates in this report, the "**Root Mean Square Error**" is shown for selected items in the table on the following page. The "Root Mean Square Error" is a statistical measure based on past performance and is computed using the differences between first and latest estimates. The "Root Mean Square Error" for cattle on feed inventory estimates over the past 24 months is 0.2 percent. This means that chances are 2 out of 3 that the final estimate will not be above or below the current estimate of 10.7 million head by more than 0.1 percent. Chances are 9 out of 10 that the difference will not exceed 0.3 percent.

The table on the following page shows a 24 month record of the range of differences between first and latest estimates for selected items. Using estimates of number on feed as an example, changes between the first estimate and the latest estimate during the past 24 months have averaged 13,000 head, ranging from 0 to 47,000 head. During this period the initial estimate has been above the latest estimate 13 times and has been below the latest estimate 6 times. This does not imply that the initial estimate is likely to understate or overstate final inventory.

Reliability of Monthly Cattle on Feed Estimates

[[Based on data for the past 24 months]]

Item	Root mean square error	90 percent confidence level	Difference between first and latest estimate				
			Average	Smallest	Largest	Months	
						Below latest	Above latest
	(percent)	(percent)	(1,000)	(1,000)	(1,000)	(number)	(number)
Number on feed	0.2	0.3	13	0	47	6	13
Placements	0.3	0.5	3	0	18	7	9
Marketings	0.3	0.5	3	0	20	7	5

Information Contacts

Listed below are the commodity specialists in the Livestock Branch of the National Agricultural Statistics Service to contact for additional information. E-mail inquiries may be sent to nass@nass.usda.gov

Dan Kerestes, Chief, Livestock Branch	(202) 720-3570
Scott Hollis, Head, Livestock Section	(202) 690-2424
Travis Averill – Cattle, Cattle on Feed	(202) 720-3040
Sherry Bertramsen – Livestock Slaughter	(515) 284-4340
Doug Bounds – Hogs and Pigs	(202) 720-3106
Donnie Fike – Dairy Products	(202) 690-3236
Mike Miller – Milk Production and Milk Cows	(202) 720-3278
Vacant – Sheep and Goats	(202) 720-4751

Access to NASS Reports

For your convenience, you may access NASS reports and products the following ways:

- All reports are available electronically, at no cost, on the NASS web site: <http://www.nass.usda.gov>
- Both national and state specific reports are available via a free e-mail subscription. To set-up this free subscription, visit <http://www.nass.usda.gov> and in the “Follow NASS” box under “Receive reports by Email,” click on “National” or “State” to select the reports you would like to receive.
- Printed reports may be purchased from the National Technical Information Service (NTIS) by calling toll-free (800) 999-6779, or (703) 605-6220 if calling from outside the United States or Canada. Accepted methods of payment are Visa, MasterCard, check, or money order.

For more information on NASS surveys and reports, call the NASS Agricultural Statistics Hotline at (800) 727-9540, 7:30 a.m. to 4:00 p.m. ET, or e-mail: nass@nass.usda.gov.

The United States Department of Agriculture (USDA) prohibits discrimination in all its programs and activities on the basis of race, color, national origin, age, disability, and where applicable, sex, marital status, familial status, parental status, religion, sexual orientation, political beliefs, genetic information, reprisal, or because all or a part of an individual's income is derived from any public assistance program. (Not all prohibited bases apply to all programs.) Persons with disabilities who require alternative means for communication of program information (Braille, large print, audiotape, etc.) should contact USDA's TARGET Center at (202) 720-2600 (voice and TDD).

To file a complaint of discrimination, write to USDA, Assistant Secretary for Civil Rights, Office of the Assistant Secretary for Civil Rights, 1400 Independence Avenue, S.W., Stop 9410, Washington, DC 20250-9410, or call toll-free at (866) 632-9992 (English) or (800) 877-8339 (TDD) or (866) 377-8642 (English Federal-relay) or (800) 845-6136 (Spanish Federal-relay). USDA is an equal opportunity provider and employer.