



# Cattle on Feed

ISSN: 1948-9080

---

Released October 31, 2013, by the National Agricultural Statistics Service (NASS), Agricultural Statistics Board, United States Department of Agriculture (USDA).

## United States Cattle on Feed Down 8 Percent

**Cattle and calves on feed** for slaughter market in the United States for feedlots with capacity of 1,000 or more head totaled 10.1 million head on October 1, 2013. The inventory was 8 percent below October 1, 2012. The inventory included 6.44 million steers and steer calves, down 7 percent from the previous year. This group accounted for 64 percent of the total inventory. Heifers and heifer calves accounted for 3.66 million head, down 8 percent from 2012.

**Placements** in feedlots during September totaled 2.03 million, 1 percent above 2012. Net placements were 1.96 million head. During September, placements of cattle and calves weighing less than 600 pounds were 475,000, 600-699 pounds were 335,000, 700-799 pounds were 480,000, and 800 pounds and greater were 735,000.

**Marketings** of fed cattle during September totaled 1.70 million, 6 percent above 2012.

**Other disappearance** totaled 62,000 during September, 3 percent below 2012.

**Number of Cattle on Feed, Placements, Marketings, and Other Disappearance on 1,000+ Capacity Feedlots – United States: October 1, 2012 and 2013**

Item	Number		Percent of previous year
	2012	2013	
	(1,000 head)	(1,000 head)	(percent)
On feed September 1 .....	10,647	9,876	93
Placed on feed during September .....	2,004	2,025	101
Fed cattle marketed during September .....	1,598	1,695	106
Other disappearance during September .....	64	62	97
On feed October 1 .....	10,989	10,144	92

**Number of Cattle on Feed, Placements, Marketings, and Other Disappearance on 1,000+ Capacity Feedlots – United States: September 1, 2012 and 2013**

Item	Number		Percent of previous year
	2012	2013	
	(1,000 head)	(1,000 head)	(percent)
On feed August 1 .....	10,656	10,026	94
Placed on feed during August .....	2,007	1,788	89
Fed cattle marketed during August .....	1,955	1,883	96
Other disappearance during August .....	61	55	90
On feed September 1 .....	10,647	9,876	93

**Number on Feed by Class on 1,000+ Capacity Feedlots – United States: October 1, 2012 and 2013**

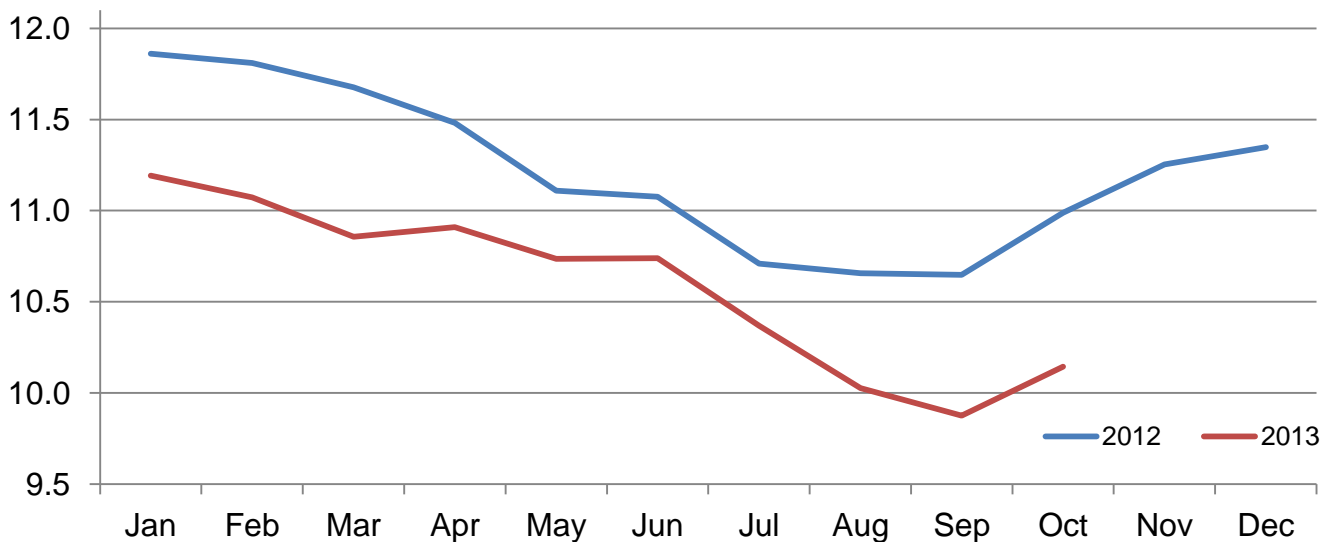
Item	Number		Percent of previous year
	2012	2013	
	(1,000 Head)	(1,000 Head)	(percent)
Class on Feed October 1			
Steers and Steer Calves .....	6,960	6,442	93
Heifers and Heifer Calves .....	3,967	3,662	92
Cows and Bulls .....	62	40	65

**Number of Cattle on Feed on 1,000+ Capacity Feedlots by Month – States and United States: 2012 and 2013**

State	October 1, 2012	September 1, 2013	October 1, 2013		
			Number	Percent of previous year	Percent of previous month
	(1,000 head)	(1,000 head)	(1,000 head)	(percent)	(percent)
Arizona .....	272	266	268	99	101
California .....	475	505	500	105	99
Colorado .....	1,000	830	870	87	105
Idaho .....	230	190	210	91	111
Iowa .....	590	550	560	95	102
Kansas .....	2,230	1,980	2,000	90	101
Nebraska .....	2,330	2,090	2,210	95	106
Oklahoma .....	335	280	285	85	102
South Dakota .....	195	170	180	92	106
Texas .....	2,680	2,430	2,460	92	101
Washington .....	213	184	184	86	100
Other States .....	439	401	417	95	104
United States .....	10,989	9,876	10,144	92	103

**Cattle on Feed Inventory on 1,000+ Capacity Feedlots – United States**

Million head

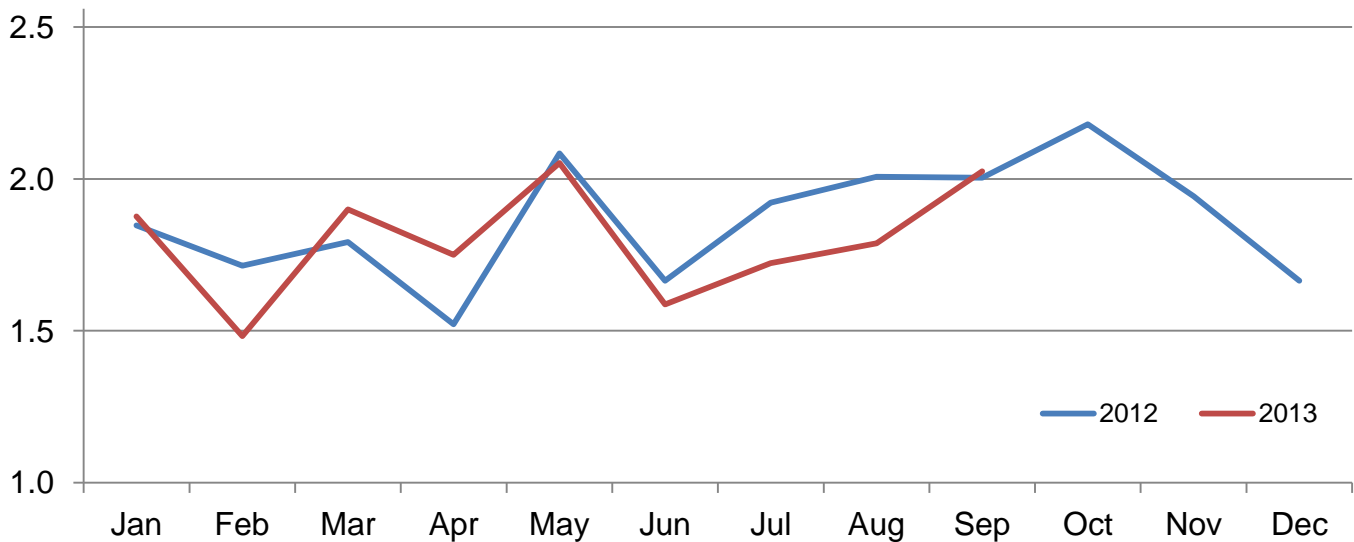


**Number of Cattle Placed on Feed on 1,000+ Capacity Feedlots by Month – States and United States: 2012 and 2013**

State	During September 2012	During August 2013	During September 2013		
			Number	Percent of previous year	Percent of previous month
	(1,000 head)	(1,000 head)	(1,000 head)	(percent)	(percent)
Arizona .....	20	23	23	115	100
California .....	50	55	50	100	91
Colorado .....	225	145	190	84	131
Idaho .....	61	52	62	102	119
Iowa .....	89	66	101	113	153
Kansas .....	375	385	390	104	101
Nebraska .....	470	440	520	111	118
Oklahoma .....	57	47	67	118	143
South Dakota .....	50	29	43	86	148
Texas .....	480	450	480	100	107
Washington .....	46	43	37	80	86
Other States .....	81	53	62	77	117
United States .....	2,004	1,788	2,025	101	113

**Number of Cattle Placed on 1000+ Capacity Feedlots – United States**

Million head



**Number of Cattle Placed on Feed by Weight Group on 1,000+ Capacity Feedlots by Month – States and United States: 2012 and 2013**

State	During September									
	Under 600 lbs		600-699 lbs		700-799 lbs		800+ lbs		Total	
	2012	2013	2012	2013	2012	2013	2012	2013	2012	2013
	(1,000 head)	(1,000 head)	(1,000 head)	(1,000 head)	(1,000 head)	(1,000 head)	(1,000 head)	(1,000 head)	(1,000 head)	(1,000 head)
Colorado .....	40	35	20	20	55	50	110	85	225	190
Kansas .....	80	70	85	85	105	120	105	115	375	390
Nebraska .....	90	75	60	70	100	105	220	270	470	520
Texas .....	185	185	130	110	100	115	65	70	480	480
Other States .....	120	110	60	50	84	90	190	195	454	445
United States .....	515	475	355	335	444	480	690	735	2,004	2,025

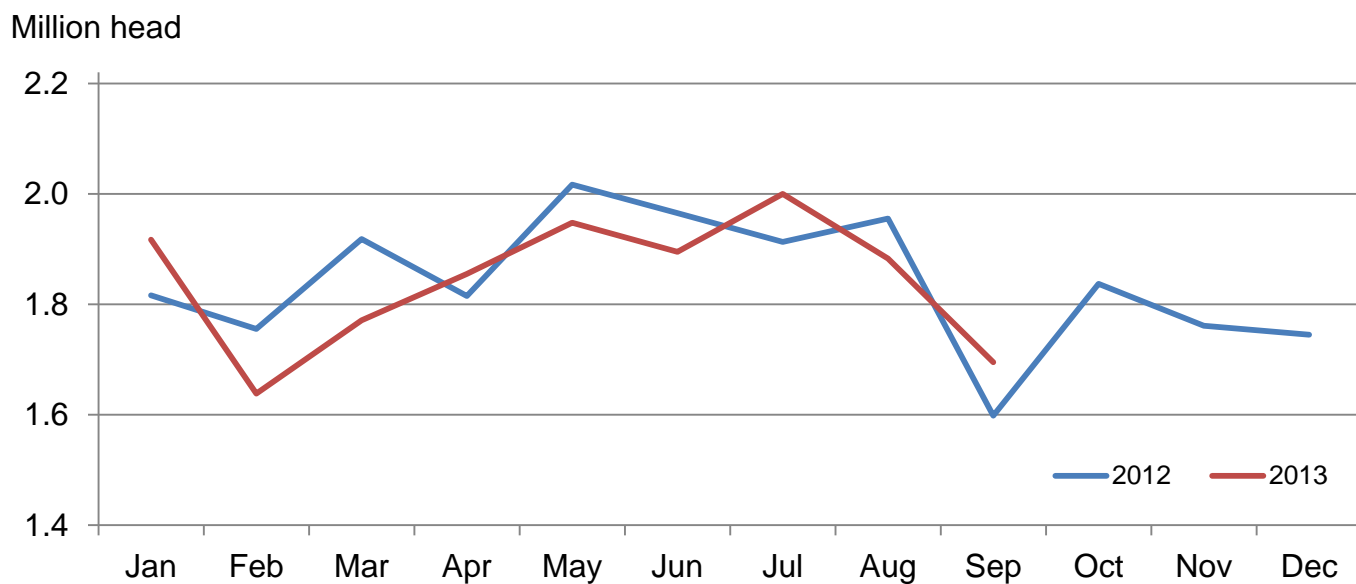
  

State	During August									
	Under 600 lbs		600-699 lbs		700-799 lbs		800+ lbs		Total	
	2012	2013	2012	2013	2012	2013	2012	2013	2012	2013
	(1,000 head)	(1,000 head)	(1,000 head)	(1,000 head)	(1,000 head)	(1,000 head)	(1,000 head)	(1,000 head)	(1,000 head)	(1,000 head)
Colorado .....	30	25	25	20	50	45	85	55	190	145
Kansas .....	80	65	105	85	120	115	130	120	435	385
Nebraska .....	70	55	75	65	120	100	205	220	470	440
Texas .....	200	175	120	120	110	100	65	55	495	450
Other States .....	102	85	60	48	75	70	180	165	417	368
United States .....	482	405	385	338	475	430	665	615	2,007	1,788

**Number of Cattle Marketed on 1,000+ Capacity Feedlots by Month – States and United States: 2012 and 2013**

State	During September 2012	During August 2013	During September 2013		
			Number	Percent of previous year	Percent of previous month
			(1,000 head)	(percent)	(percent)
Arizona .....	18	18	20	111	111
California .....	52	60	53	102	88
Colorado .....	150	180	145	97	81
Idaho .....	35	46	41	117	89
Iowa .....	87	73	89	102	122
Kansas .....	310	395	355	115	90
Nebraska .....	370	420	390	105	93
Oklahoma .....	45	51	60	133	118
South Dakota .....	39	38	32	82	84
Texas .....	400	495	430	108	87
Washington .....	40	47	36	90	77
Other States .....	52	60	44	85	73
United States .....	1,598	1,883	1,695	106	90

## Number of Cattle Marketed on 1,000+ Capacity Feedlots – United States



### Other Disappearance on 1,000+ Capacity Feedlots by Month – States and United States: 2012 and 2013

State	During September 2012 (1,000 head)	During August 2013 (1,000 head)	During September 2013		
			Number (1,000 head)	Percent of previous year (percent)	Percent of previous month (percent)
Arizona .....	1	1	1	100	100
California .....	3	5	2	67	40
Colorado .....	5	5	5	100	100
Idaho .....	1	1	1	100	100
Iowa .....	2	3	2	100	67
Kansas .....	15	10	15	100	150
Nebraska .....	10	10	10	100	100
Oklahoma .....	2	1	2	100	200
South Dakota .....	1	1	1	100	100
Texas .....	20	15	20	100	133
Washington .....	1	1	1	100	100
Other States .....	3	2	2	67	100
United States .....	64	55	62	97	113

**Number on Feed by Class on 1,000+ Capacity Feedlots by Quarter – States and United States: 2012 and 2013**

State	Steers and steer calves			Heifers and heifer calves			Cows and bulls		
	Oct 1, 2012	Jul 1, 2013	Oct 1, 2013	Oct 1, 2012	Jul 1, 2013	Oct 1, 2013	Oct 1, 2012	Jul 1, 2013	Oct 1, 2013
	(1,000 Head)	(1,000 Head)	(1,000 Head)	(1,000 Head)	(1,000 Head)	(1,000 Head)	(1,000 Head)	(1,000 Head)	(1,000 Head)
Arizona .....	268	262	261	4	5	7	0	0	0
California .....	410	445	455	65	68	44	0	2	1
Colorado .....	670	590	560	325	325	305	5	5	5
Idaho .....	137	102	115	89	92	90	4	1	5
Iowa .....	415	430	355	175	150	205	0	0	0
Kansas .....	1,200	1,070	1,060	1,025	930	935	5	10	5
Nebraska .....	1,400	1,355	1,390	900	810	810	30	15	10
Oklahoma .....	225	200	190	110	105	95	0	0	0
South Dakota .....	108	105	104	75	71	67	12	24	9
Texas .....	1,690	1,560	1,540	989	999	919	1	1	1
Washington .....	137	104	109	74	96	72	2	3	3
Other States .....	300	304	303	136	128	113	3	1	1
United States .....	6,960	6,527	6,442	3,967	3,779	3,662	62	62	40

## Terms and Definitions of Cattle on Feed Estimates

**Cattle on feed** are animals being fed a ration of grain, silage, hay and/or protein supplement for slaughter market that are expected to produce a carcass that will grade select or better. It excludes cattle being "backgrounded only" for later sale as feeders or later placement in another feedlot.

**Placements** are cattle put into a feedlot, fed a ration which will produce a carcass that will grade select or better, and are intended for the slaughter market.

**Marketings** are cattle shipped out of feedlots to a slaughter market.

**Other disappearance** includes death loss, movement from feedlots to pasture, and shipments to other feedlots for further feeding.

## Reliability of Cattle on Feed Estimates

**Survey Procedures:** During January and July all known feedlots in the United States with capacity of 1,000 or more head are surveyed to provide data for cattle on feed estimates. During the other months, all known feedlots from 16 States are surveyed. The 16 States account for approximately 98 percent of the cattle on feed in feedlots with capacity of 1,000 or more head. Individual State estimates are published monthly for 11 of the 16 States. Data collected from the remaining 5 States are used to establish the "Other States" estimates. These 5 States include Illinois, Minnesota, New Mexico, Oregon, and Wyoming. The "Other States" category represents all cattle on feed with a capacity of 1,000 or more head for the rest of the United States.

**Estimating Procedures:** These cattle on feed estimates were prepared by the Agricultural Statistics Board after reviewing recommendations and analysis submitted by each State office. Regional and State survey data were reviewed for reasonableness with each other and with estimates from the previous month when establishing the current estimates.

**Revision Policy:** Revisions to previous estimates are made to improve month to month relationships. Estimates for the previous month are subject to revision in all States each month when current estimates are made. In February, all monthly estimates for the previous year, and the number of feedlots and annual marketings from two years ago are reviewed and subject to revisions. The reviews are primarily based on slaughter data, state check-off or brand data, and any other data that may have been received after the original estimate was made. Estimates will also be reviewed after data from the Census of Agriculture are available. No revisions will be made after that date and estimates become final.

**Reliability:** Since all 1,000+ capacity cattle on feed operators in every State are not included in the monthly survey, survey estimates are subject to sampling variability. Survey results are also subject to non-sampling errors such as omissions, duplications, and mistakes in reporting, recording, and processing the data. The effects of these errors cannot be measured directly. They are minimized through rigid quality controls in the data collection process and through a careful review of all reported data for consistency and reasonableness.

To assist users in evaluating the reliability of estimates in this report, the "**Root Mean Square Error**" is shown for selected items in the table on the following page. The "Root Mean Square Error" is a statistical measure based on past performance and is computed using the differences between first and latest estimates. The "Root Mean Square Error" for cattle on feed inventory estimates over the past 24 months is 0.1 percent. This means that chances are 2 out of 3 that the final estimate will not be above or below the current estimate of 10.1 million head by more than 0.1 percent. Chances are 9 out of 10 that the difference will not exceed 0.2 percent.

The table on the following page shows a 24 month record of the range of differences between first and latest estimates for selected items. Using estimates of number on feed as an example, changes between the first estimate and the latest estimate during the past 24 months have averaged 5,000 head, ranging from 0 to 35,000 head. During this period the initial estimate has been above the latest estimate 4 times and has been below the latest estimate 3 times. This does not imply that the initial estimate is likely to understate or overstate final inventory.



## Reliability of Monthly Cattle on Feed Estimates

[Based on data for the past 24 months]

Item	Root mean square error	90 percent confidence level	Difference between first and latest estimate				
			Average	Smallest	Largest	Months	
						Below latest	Above latest
	(percent)	(percent)	(1,000)	(1,000)	(1,000)	(number)	(number)
Number on feed .....	0.1	0.2	5	0	35	3	4
Placements .....	0.3	0.4	2	0	20	4	3
Marketings .....	0.2	0.4	1	0	20	3	2

## Information Contacts

Listed below are the commodity specialists in the Livestock Branch of the National Agricultural Statistics Service to contact for additional information. E-mail inquiries may be sent to [nass@nass.usda.gov](mailto:nass@nass.usda.gov)

Dan Kerestes, Chief, Livestock Branch .....	(202) 720-3570
Scott Hollis, Head, Livestock Section .....	(202) 690-2424
Travis Averill – Cattle, Cattle on Feed .....	(202) 720-3040
Doug Bounds – Hogs and Pigs .....	(202) 720-3106
Alissa Cowell-Mytar – Sheep and Goats .....	(202) 720-4751
Donnie Fike – Dairy Products .....	(202) 690-3236
Tiffany Hora – Livestock Slaughter .....	(515) 284-4340
Mike Miller – Milk Production and Milk Cows .....	(202) 720-3278

## Access to NASS Reports

For your convenience, you may access NASS reports and products the following ways:

- All reports are available electronically, at no cost, on the NASS web site: <http://www.nass.usda.gov>
- Both national and state specific reports are available via a free e-mail subscription. To set-up this free subscription, visit <http://www.nass.usda.gov> and in the “Follow NASS” box under “Receive reports by Email,” click on “National” or “State” to select the reports you would like to receive.

For more information on NASS surveys and reports, call the NASS Agricultural Statistics Hotline at (800) 727-9540, 7:30 a.m. to 4:00 p.m. ET, or e-mail: [nass@nass.usda.gov](mailto:nass@nass.usda.gov).

The U.S. Department of Agriculture (USDA) prohibits discrimination against its customers, employees, and applicants for employment on the bases of race, color, national origin, age, disability, sex, gender identity, religion, reprisal, and where applicable, political beliefs, marital status, familial or parental status, sexual orientation, or all or part of an individual's income is derived from any public assistance program, or protected genetic information in employment or in any program or activity conducted or funded by the Department. (Not all prohibited bases will apply to all programs and/or employment activities.)

If you wish to file a Civil Rights program complaint of discrimination, complete the [USDA Program Discrimination Complaint Form](#) (PDF), found online at [http://www.ascr.usda.gov/complaint\\_filing\\_cust.html](http://www.ascr.usda.gov/complaint_filing_cust.html), or at any USDA office, or call (866) 632-9992 to request the form. You may also write a letter containing all of the information requested in the form. Send your completed complaint form or letter to us by mail at U.S. Department of Agriculture, Director, Office of Adjudication, 1400 Independence Avenue, S.W., Washington, D.C. 20250-9410, by fax (202) 690-7442 or email at [program.intake@usda.gov](mailto:program.intake@usda.gov).