



18 July 2013

## United Kingdom Slaughter Statistics – June 2013

### Contents

Section 1	Monthly numbers of livestock slaughtered	page 2
Section 2	Average dressed carcase weights	page 2
Section 3	Monthly volumes of meat production	page 3
Section 4	Average weekly numbers of livestock slaughtered	page 3 to page 4
Section 5	Monthly numbers of livestock slaughtered by country	page 5
Section 6	Methodology, notes and revisions policy	page 6

### Key points

This release shows the latest monthly information on the slaughtering of cattle, sheep and pigs. It also includes dressed carcase weight and meat production information. The key results for **June 2013** are given below:

- **Cattle:** UK prime cattle slaughterings were 5.4 per cent higher than in June 2012 at 151 thousand head. Beef and veal production was 65 thousand tonnes, 1.0 per cent higher than in June 2012.
- **Sheep:** UK clean sheep slaughterings were 7.3 per cent higher than in June 2012 at 840 thousand head. Mutton and lamb production was 20 thousand tonnes, 7.1 per cent higher than in June 2012.
- **Pigs:** UK clean pig slaughterings were 0.6 per cent higher than in June 2012 at 743 thousand head. Pigmeat production was 61 thousand tonnes, 1.0 per cent higher than in June 2012.

This notice will be updated at 09:30 on 22 August 2013.

---

**Enquiries on this publication to:** Sarah Thompson, Department for Environment, Food and Rural Affairs, Room 301, Foss House, Kings Pool, 1 - 2 Peasholme Green, York YO1 7PX.  
Tel: ++ 44 (0)1904 455097, email:sarah.thompson@defra.gsi.gov.uk

**A National Statistics publication.** National Statistics are produced to high professional standards. They undergo regular quality assurance reviews to ensure that they meet customer needs. They are produced free from any political interference. For general enquiries about National Statistics, contact the National Statistics Public Enquiry Service: tel. 0845 601 3034 email [info@statistics.gov.uk](mailto:info@statistics.gov.uk). You can also find National Statistics on the internet at <http://www.statistics.gov.uk/>.

## Section 1: Monthly numbers of livestock slaughtered

Table 1 shows monthly estimates of the number of cattle, sheep and pigs slaughtered for meat for human consumption in the United Kingdom. The survey is run according to statistical, rather than calendar months, the number of weeks in the statistical month is specified below.

**Table 1: United Kingdom monthly numbers of livestock slaughtered** thousand head

	<b>April 2013</b> 5 weeks	<b>May 2013</b> 4 weeks	<b>June 2013</b> 4 weeks
Steers	94	73	69
Heifers	71	55	54
Young Bulls	27	24	28
Cows and Adult Bulls	55	42	42
Calves	8	5	4
Other Sheep and Lambs	980	729	840
Ewes and Rams	177	143	148
Clean Pigs	945	733	743
Sows and Boars	25	19	20

## Section 2: Average dressed carcass weights

Table 2 shows the monthly average dressed carcass weight of livestock slaughtered for meat for human consumption in the United Kingdom.

**Table 2: United Kingdom average dressed carcass weights** kilogramme

	<b>April 2013</b>	<b>May 2013</b>	<b>June 2013</b>
Steers	366.4	362.5	361.2
Heifers	316.2	315.5	315.8
Young Bulls	337.7	338.2	342.3
Cows and Adult Bulls	305.5	306.7	310.8
Calves	46.1	53.8	56.6
Other Sheep and Lambs	19.3	19.1	19.1
Ewes and Rams	25.4	26.7	26.9
Clean Pigs	79.0	78.3	78.2
Sows and Boars	143.0	143.6	145.7

### Section 3: Monthly volumes of meat production

Table 3 shows the monthly volumes of meat produced in the United Kingdom. Data is shown according to statistical, rather than calendar months, number of weeks in statistical month as specified.

**Table 3: United Kingdom monthly volumes of meat production** thousand tonnes

	<b>April 2013</b> 4 weeks	<b>May 2013</b> 4 weeks	<b>June 2013</b> 4 weeks
Beef	83	65	65
Mutton and Lamb	23	18	20
Pigmeat	78	60	61

### Section 4: Average weekly numbers of livestock slaughtered

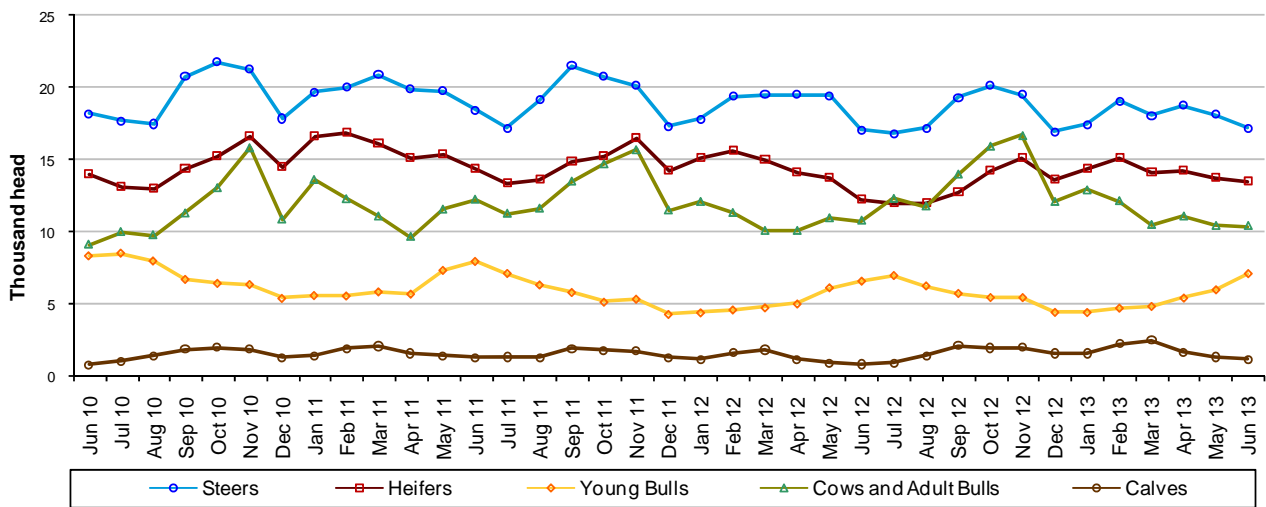
Table 4 shows the average weekly slaughter figures for the last thirteen months. The monthly slaughter figures in section one are affected by the number of weeks in the statistical month. To get a clearer measure of trends weekly averages are calculated by dividing the number of livestock slaughtered each month by the number of weeks in the statistical month.

Longer term trends can be seen in Figures 4:1, 4:2 and 4:3, following this table.

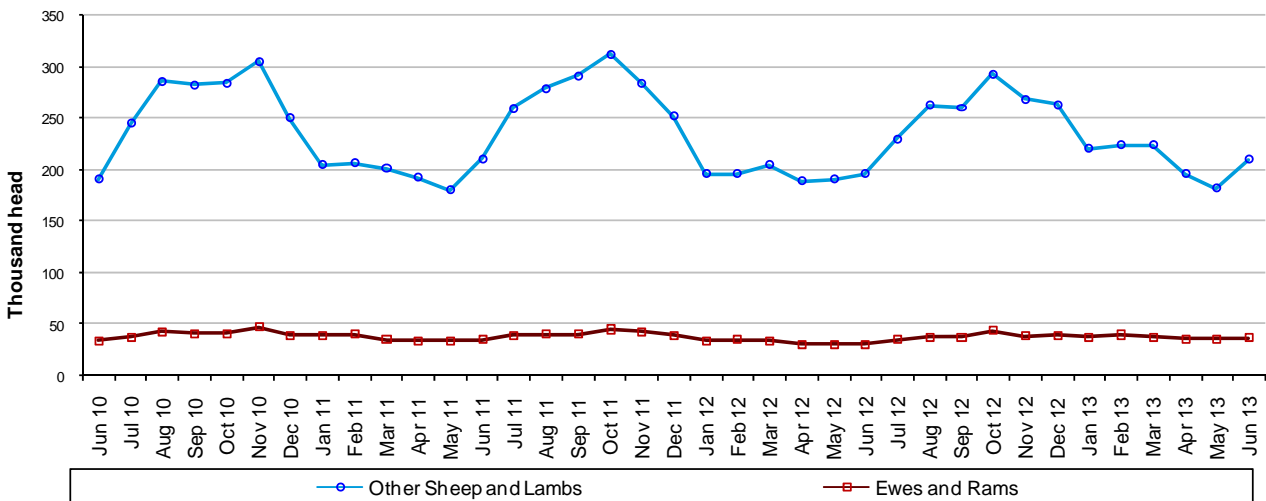
**Table 4: United Kingdom average weekly numbers of livestock slaughtered** thousand head

	2012					2013							
	Jun	Jul	Aug	Sep	Oct	Nov	Dec	Jan	Feb	Mar	Apr	May	Jun
Steers	17	17	17	19	20	20	17	17	19	18	19	18	17
Heifers	12	12	12	13	14	15	14	14	15	14	14	14	13
Young Bulls	7	7	6	6	5	5	4	4	5	5	5	6	7
Cows and Adult Bulls	11	12	12	14	16	17	12	13	12	10	11	10	10
Calves	1	1	1	2	2	2	2	2	2	2	2	1	1
Other Sheep and Lambs	196	230	262	260	293	268	263	220	224	224	196	182	210
Ewes and Rams	31	35	38	37	44	38	39	38	40	37	35	36	37
Clean Pigs	185	192	195	197	201	208	192	189	197	192	189	183	186
Sows and Boars	5	5	5	6	5	5	4	5	5	5	5	5	5

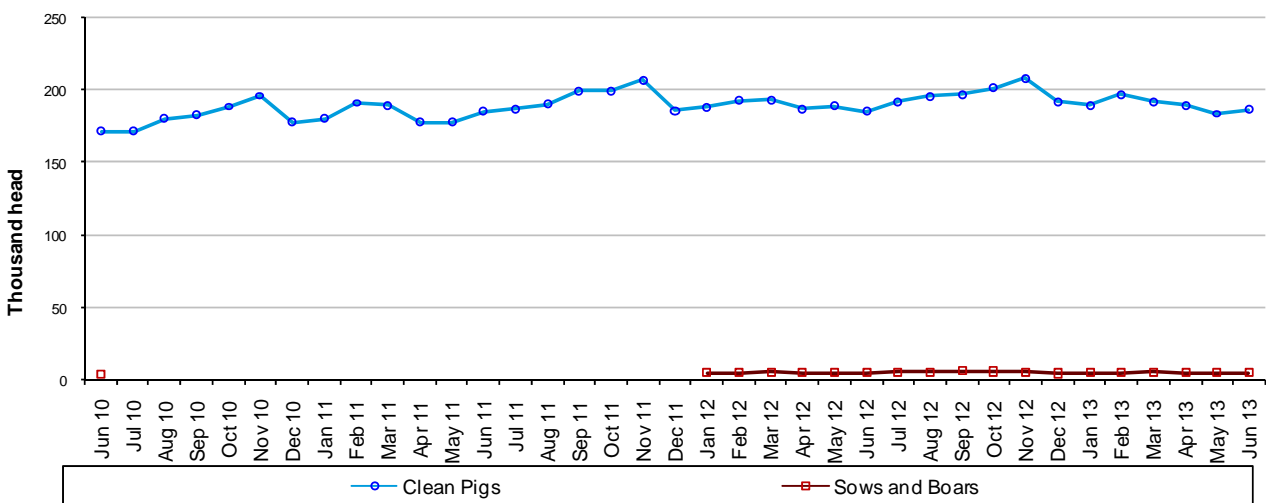
**Figure 4:1 United Kingdom average weekly numbers of cattle slaughtered**



**Figure 4:2 United Kingdom average weekly numbers of sheep slaughtered**



**Figure 4:3 United Kingdom average weekly numbers of pigs slaughtered**



Data for Jul 10 – Dec 11 is confidential

## Section 5: Monthly numbers of livestock slaughtered by country

Table 5 shows monthly estimates of the number of cattle, sheep and pigs slaughtered for meat in England and Wales, Scotland, Great Britain and Northern Ireland. Data are shown in statistical months, rather than calendar months. The totals for the countries may not add up to the Great Britain totals or the United Kingdom totals in section one, due to rounding.

**Table 5: United Kingdom monthly numbers of livestock slaughtered by country**

	April 2013	May 2013	June 2013
	5 weeks	4 weeks	4 weeks
thousand head			
<b>England &amp; Wales</b>			
Steers	57	44	43
Heifers	42	33	33
Young Bulls	17	15	18
Cows and Adult Bulls	41	30	31
Calves	8	5	4
Other Sheep and Lambs	843	662	743
Ewes and Rams	171	139	143
Clean Pigs	764	598	602
Sows and Boars	24	19	20
<b>Scotland</b>			
Steers	22	17	16
Heifers	16	12	12
Young Bulls	3	3	4
Cows and Adult Bulls	5	5	4
Calves	0	0	0
Other Sheep and Lambs	116	46	65
Ewes and Rams	2	2	2
Clean Pigs	30	22	22
Sows and Boars	0	0	0
<b>Great Britain</b>			
Steers	79	61	59
Heifers	58	45	45
Young Bulls	20	18	22
Cows and Adult Bulls	47	34	35
Calves	8	5	4
Other Sheep and Lambs	959	708	808
Ewes and Rams	173	140	145
Clean Pigs	794	621	624
Sows and Boars	25	19	20
<b>Northern Ireland</b>			
Steers	15	12	10
Heifers	13	10	9
Young Bulls	7	5	6
Cows and Adult Bulls	8	8	7
Calves	1	0	0
Other Sheep and Lambs	21	21	32
Ewes and Rams	4	3	3
Clean Pigs	152	112	119
Sows and Boars	0	0	0

## Section 6: Methodology, notes and revisions policy

1. The information in this notice is used by the UK government and the EU as evidence for assessing market conditions and evaluating agricultural policy. The slaughter statistics are also required by the EU under Regulation (EC) No 1165/2008. Other users include the food and farming industry, academia and the general public. Contact details are available on the front page of this notice, for you to send feedback or ask questions about the information provided.
2. Defra runs a monthly survey of registered England and Wales slaughterhouses. It is a statutory survey of 106 respondents that collects information on livestock slaughter numbers and weight of meat produced. All major slaughterhouses participate in the survey and the response rate is typically 100%. These data are supplemented by administrative data for smaller slaughterhouses. Similar surveys are run by RERAD in Scotland and by DARD in Northern Ireland. The England and Wales slaughter survey accounts for around 90% of the E&W slaughterhouse throughput for each livestock type.
3. Information on the weight of meat produced from a sample of animals weighed at slaughterhouses is obtained from survey respondents, around 55 slaughterhouse respondents. From the information provided average dressed carcass weights for each animal type are primarily calculated by adding up the total weight of the meat produced and dividing by the number of animals weighed. Cold dressed carcass weights are recorded.
4. The volume of meat production is estimated from the number of all livestock slaughtered and average dressed carcass weight information collected. This total 'Home killed' production includes livestock imported into the United Kingdom for slaughter.
5. The data are subject to a variety of validation checks which identify inconsistencies in the data. All data are cleaned prior to publication in discussion with the survey respondents.

### Revisions policy

6. Figures in this notice are provisional and subject to revision. We will provide information about any revisions we make to previously published information in this statistics notice and the associated datasets. Revisions could occur for various reasons, including:
  - a. if we have not received survey data from respondents we make an estimate based on their previous returns. These estimates will be replaced with actual survey data when it is received.
  - b. survey respondents occasionally supply amended figures for previous periods.
  - c. if we have not received administrative data for the smaller slaughterhouses we make an estimate based on previous data received. These estimates will be replaced with actual data when it is received.
7. **This month minor revisions have been made to the data from April 2013 onwards for the reasons given above.**