



19 September 2013

United Kingdom Slaughter Statistics – August 2013

Contents

Section 1	Monthly numbers of livestock slaughtered	page 2
Section 2	Average dressed carcase weights	page 2
Section 3	Monthly volumes of meat production	page 3
Section 4	Average weekly numbers of livestock slaughtered	page 3 to page 4
Section 5	Monthly numbers of livestock slaughtered by country	page 5
Section 6	Methodology, notes and revisions policy	page 6

Key points

This release shows the latest monthly information on the slaughtering of cattle, sheep and pigs. It also includes dressed carcase weight and meat production information. The key results for **August 2013** are given below:

- **Cattle:** UK prime cattle slaughterings were 7.1 per cent lower than in August 2012 at 132 thousand head. Beef and veal production was 58 thousand tonnes, 9.0 per cent lower than in August 2012.
- **Sheep:** UK clean sheep slaughterings were marginally higher than in August 2012 at 1050 thousand head. Mutton and lamb production was 24 thousand tonnes, 2.7 per cent higher than in August 2012.
- **Pigs:** UK clean pig slaughterings were 1.3 per cent lower than in August 2012 at 771 thousand head. Pigmeat production was 63 thousand tonnes, 0.8 per cent lower than in August 2012.

This notice will be updated at 09:30 on 17 October 2013. Additional time series which now include weekly slaughter averages and production data can be found at <https://www.gov.uk/government/publications/cattle-sheep-and-pig-slaughter>

Enquiries on this publication to: Sarah Thompson, Department for Environment, Food and Rural Affairs, Room 301, Foss House, Kings Pool, 1 - 2 Peasholme Green, York YO1 7PX.
Tel: ++ 44 (0)1904 455097, email:sarah.thompson@defra.gsi.gov.uk

A National Statistics publication. National Statistics are produced to high professional standards. They undergo regular quality assurance reviews to ensure that they meet customer needs. They are produced free from any political interference. For general enquiries about National Statistics, contact the National Statistics Public Enquiry Service: tel. 0845 601 3034 email info@statistics.gov.uk. You can also find National Statistics on the internet at <http://www.statistics.gov.uk/>.

Section 1: Monthly numbers of livestock slaughtered

Table 1 shows monthly estimates of the number of cattle, sheep and pigs slaughtered for meat for human consumption in the United Kingdom. The survey is run according to statistical, rather than calendar months, the number of weeks in the statistical month is specified below.

Table 1: United Kingdom monthly numbers of livestock slaughtered thousand head

	June 2013 4 weeks	July 2013 5 weeks	August 2013 4 weeks
Steers	69	78	58
Heifers	54	62	48
Young Bulls	28	35	26
Cows and Adult Bulls	41	54	43
Calves	4	7	7
Other Sheep and Lambs	837	1195	1050
Ewes and Rams	148	196	171
Clean Pigs	744	965	771
Sows and Boars	20	23	19

Section 2: Average dressed carcass weights

Table 2 shows the monthly average dressed carcass weight of livestock slaughtered for meat for human consumption in the United Kingdom.

Table 2: United Kingdom average dressed carcass weights kilogramme

	June 2013	July 2013	August 2013
Steers	360.6	359.2	356.9
Heifers	315.3	314.0	313.2
Young Bulls	344.0	343.1	342.8
Cows and Adult Bulls	311.1	307.5	305.1
Calves	56.3	48.1	44.5
Other Sheep and Lambs	19.2	18.7	18.7
Ewes and Rams	27.0	25.3	26.5
Clean Pigs	78.2	78.3	78.6
Sows and Boars	145.7	152.8	150.2

Section 3: Monthly volumes of meat production

Table 3 shows the monthly volumes of meat produced in the United Kingdom. Data is shown according to statistical, rather than calendar months, number of weeks in statistical month as specified.

Table 3: United Kingdom monthly volumes of meat production thousand tonnes

	June 2013 4 weeks	July 2013 5 weeks	August 2013 4 weeks
Beef	65	76	58
Mutton and Lamb	20	27	24
Pigmeat	61	79	63

Section 4: Average weekly numbers of livestock slaughtered

Table 4 shows the average weekly slaughter figures for the last thirteen months. The monthly slaughter figures in section one are affected by the number of weeks in the statistical month. To get a clearer measure of trends weekly averages are calculated by dividing the number of livestock slaughtered each month by the number of weeks in the statistical month.

Longer term trends can be seen in Figures 4:1, 4:2 and 4:3, following this table.

Table 4: United Kingdom average weekly numbers of livestock slaughtered

thousand head

	2012			2013									
	Aug	Sep	Oct	Nov	Dec	Jan	Feb	Mar	Apr	May	Jun	Jul	Aug
Steers	17	19	20	20	17	17	19	18	19	18	17	16	15
Heifers	12	13	14	15	14	14	15	14	14	14	13	12	12
Young Bulls	6	6	5	5	4	4	5	5	5	6	7	7	6
Cows and Adult Bulls	12	14	16	17	12	13	12	10	11	10	10	11	11
Calves	1	2	2	2	2	2	2	2	2	1	1	1	2
Other Sheep and Lambs	262	260	293	268	263	220	224	224	196	182	209	239	263
Ewes and Rams	38	37	44	38	39	38	40	37	35	36	37	39	43
Clean Pigs	195	197	201	208	192	189	197	192	189	183	186	193	193
Sows and Boars	5	6	5	5	4	5	5	5	5	5	5	5	5

Figure 4:1 United Kingdom average weekly numbers of cattle slaughtered

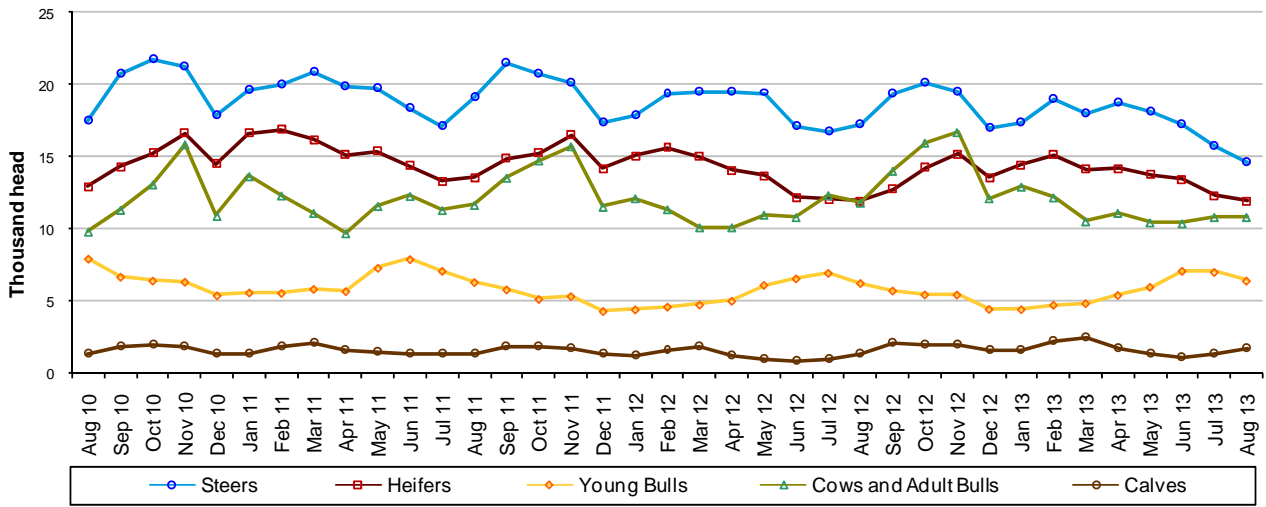


Figure 4:2 United Kingdom average weekly numbers of sheep slaughtered

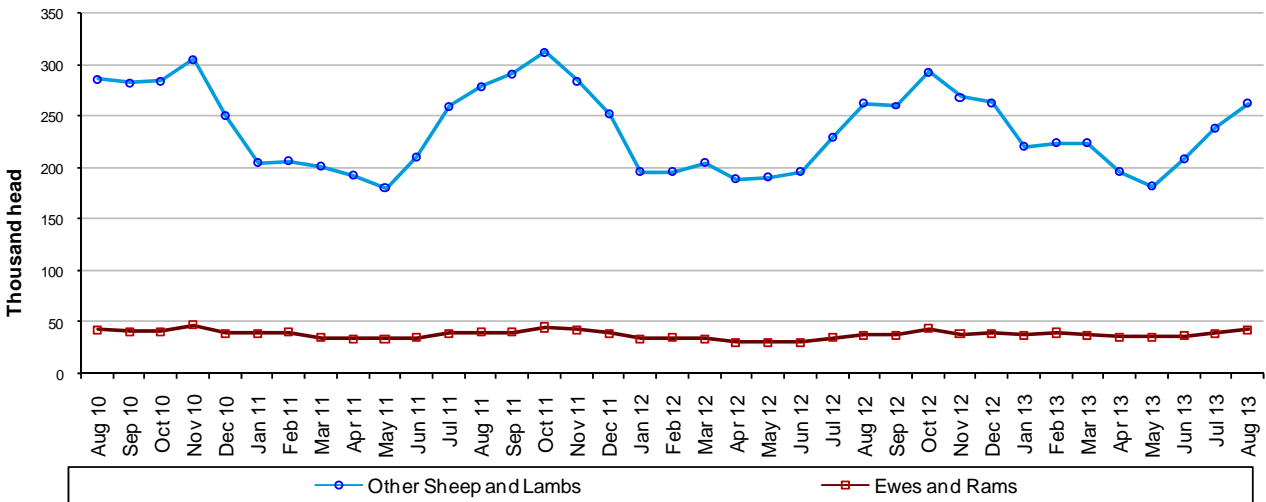
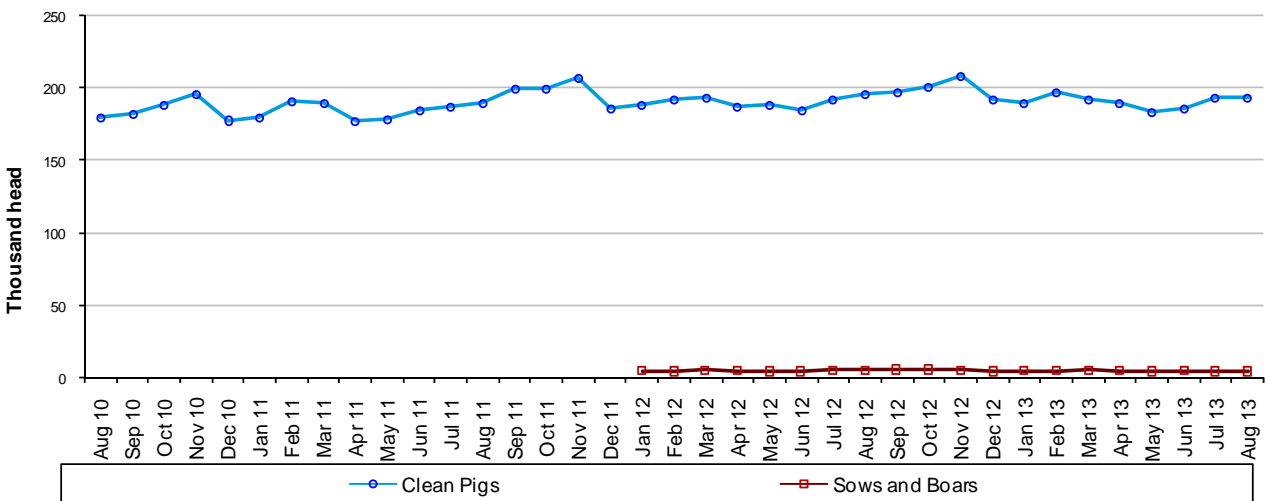


Figure 4:3 United Kingdom average weekly numbers of pigs slaughtered



Data for Jul 10 – Dec 11 is confidential

Section 5: Monthly numbers of livestock slaughtered by country

Table 5 shows monthly estimates of the number of cattle, sheep and pigs slaughtered for meat in England and Wales, Scotland, Great Britain and Northern Ireland. Data are shown in statistical months, rather than calendar months. The totals for the countries may not add up to the Great Britain totals or the United Kingdom totals in section one, due to rounding.

Table 5: United Kingdom monthly numbers of livestock slaughtered by country

	thousand head		
	June 2013	July 2013	August 2013
	4 weeks	5 weeks	4 weeks
England & Wales			
Steers	43	49	35
Heifers	33	38	29
Young Bulls	18	22	16
Cows and Adult Bulls	31	39	30
Calves	4	6	6
Other Sheep and Lambs	742	1038	906
Ewes and Rams	142	189	165
Clean Pigs	603	787	624
Sows and Boars	20	23	19
Scotland			
Steers	16	18	14
Heifers	12	14	11
Young Bulls	4	6	4
Cows and Adult Bulls	4	6	5
Calves	0	0	0
Other Sheep and Lambs	63	112	104
Ewes and Rams	2	3	2
Clean Pigs	22	27	19
Sows and Boars	0	0	0
Great Britain			
Steers	59	67	49
Heifers	45	52	40
Young Bulls	23	28	19
Cows and Adult Bulls	35	45	35
Calves	4	6	6
Other Sheep and Lambs	805	1150	1010
Ewes and Rams	144	192	168
Clean Pigs	625	814	643
Sows and Boars	20	23	19
Northern Ireland			
Steers	10	11	9
Heifers	9	10	8
Young Bulls	6	7	6
Cows and Adult Bulls	7	9	8
Calves	0	1	1
Other Sheep and Lambs	32	45	40
Ewes and Rams	3	4	3
Clean Pigs	119	150	128
Sows and Boars	0	0	0

Section 6: Methodology, notes and revisions policy

1. The information in this notice is used by the UK government and the EU as evidence for assessing market conditions and evaluating agricultural policy. The slaughter statistics are also required by the EU under Regulation (EC) No 1165/2008. Other users include the food and farming industry, academia and the general public. Contact details are available on the front page of this notice, for you to send feedback or ask questions about the information provided.
2. Defra runs a monthly survey of registered England and Wales slaughterhouses. It is a statutory survey (approximately 105) that collects information on livestock slaughter numbers and weight of meat produced. All major slaughterhouses participate in the survey and the response rate is typically 100%. These data are supplemented by administrative data for smaller slaughterhouses. Similar surveys are run by RERAD in Scotland and by DARD in Northern Ireland. The England and Wales slaughter survey accounts for around 90% of the E&W slaughterhouse throughput for each livestock type.
3. Information on the weight of meat produced from a sample of animals weighed at slaughterhouses is obtained from survey respondents, around 55 slaughterhouse respondents. From the information provided average dressed carcass weights for each animal type are primarily calculated by adding up the total weight of the meat produced and dividing by the number of animals weighed. Cold dressed carcass weights are recorded.
4. The volume of meat production is estimated from the number of all livestock slaughtered and average dressed carcass weight information collected. This total 'Home killed' production includes livestock imported into the United Kingdom for slaughter.
5. The data are subject to a variety of validation checks which identify inconsistencies in the data. All data are cleaned prior to publication in discussion with the survey respondents.

Revisions policy

6. Figures in this notice are provisional and subject to revision. We will provide information about any revisions we make to previously published information in this statistics notice and the associated datasets. Revisions could occur for various reasons, including:
 - a. if we have not received survey data from respondents we make an estimate based on their previous returns. These estimates will be replaced with actual survey data when it is received.
 - b. survey respondents occasionally supply amended figures for previous periods.
 - c. if we have not received administrative data for the smaller slaughterhouses we make an estimate based on previous data received. These estimates will be replaced with actual data when it is received.
7. **This month minor revisions have been made to the data from June 2013 onwards for the reasons given above.**