



21 November 2013

## United Kingdom Slaughter Statistics – October 2013

### Contents

Section 1	Monthly numbers of livestock slaughtered	page 2
Section 2	Average dressed carcass weights	page 2
Section 3	Monthly volumes of meat production	page 3
Section 4	Average weekly numbers of livestock slaughtered	page 3 to page 4
Section 5	Monthly numbers of livestock slaughtered by country	page 5
Section 6	Methodology, notes and revisions policy	page 6

### Key points

This release shows the latest monthly information on the slaughtering of cattle, sheep and pigs. It also includes dressed carcass weight and meat production information. The key results for **October 2013** are given below:

- **Cattle:** UK prime cattle (steers, heifers and young bulls) slaughterings were 1.5 per cent lower than in October 2012 at 196 thousand head. Beef and veal production was 87 thousand tonnes, 5.6 per cent lower than in October 2012.
- **Sheep:** UK clean sheep slaughterings were 1.0 per cent higher than in October 2012 at 1486 thousand head. Mutton and lamb production was 34 thousand tonnes, 3.9 per cent higher than in October 2012.
- **Pigs:** UK clean pig slaughterings were 0.6 per cent higher than in October 2012 at 1011 thousand head. Pigmeat production was 85 thousand tonnes, 1.9 per cent higher than in October 2012.

This notice will be updated at 09:30 on 19 December 2013. Additional time series which now include weekly slaughter averages and production data can be found at <https://www.gov.uk/government/publications/cattle-sheep-and-pig-slaughter>

---

**Enquiries on this publication to:** Sarah Thompson, Department for Environment, Food and Rural Affairs, Room 301, Foss House, Kings Pool, 1 - 2 Peasholme Green, York YO1 7PX.  
Tel: ++ 44 (0)1904 455097, email:sarah.thompson@defra.gsi.gov.uk

**A National Statistics publication.** National Statistics are produced to high professional standards. They undergo regular quality assurance reviews to ensure that they meet customer needs. They are produced free from any political interference. For general enquiries about National Statistics, contact the National Statistics Public Enquiry Service: tel. 0845 601 3034 email [info@statistics.gov.uk](mailto:info@statistics.gov.uk). You can also find National Statistics on the internet at <http://www.statistics.gov.uk/>.

## Section 1: Monthly numbers of livestock slaughtered

Table 1 shows monthly estimates of the number of cattle, sheep and pigs slaughtered for meat for human consumption in the United Kingdom. The survey is run according to statistical, rather than calendar months, the number of weeks in the statistical month is specified below.

**Table 1: United Kingdom monthly numbers of livestock slaughtered** thousand head

	<b>August 2013</b> 4 weeks	<b>September 2013</b> 4 weeks	<b>October 2013</b> 5 weeks
Steers	58	72	96
Heifers	48	54	73
Young Bulls	26	24	27
Cows and Adult Bulls	42	50	68
Calves	7	9	11
Other Sheep and Lambs	1059	1107	1486
Ewes and Rams	170	166	235
Clean Pigs	770	793	1011
Sows and Boars	19	20	24

## Section 2: Average dressed carcass weights

Table 2 shows the monthly average dressed carcass weight of livestock slaughtered for meat for human consumption in the United Kingdom.

**Table 2: United Kingdom average dressed carcass weights** kilogramme

	<b>August 2013</b>	<b>September 2013</b>	<b>October 2013</b>
Steers	354.6	356.0	355.1
Heifers	312.8	313.2	314.5
Young Bulls	341.7	341.1	336.7
Cows and Adult Bulls	305.0	306.3	304.7
Calves	44.7	41.8	46.1
Other Sheep and Lambs	18.7	18.8	19.0
Ewes and Rams	26.5	25.7	25.3
Clean Pigs	78.6	79.6	80.3
Sows and Boars	150.2	142.9	153.2

### Section 3: Monthly volumes of meat production

Table 3 shows the monthly volumes of meat produced in the United Kingdom. Data is shown according to statistical, rather than calendar months, number of weeks in statistical month as specified.

**Table 3: United Kingdom monthly volumes of meat production** thousand tonnes

	August 2013 4 weeks	September 2013 4 weeks	October 2013 5 weeks
Beef	58	67	87
Mutton and Lamb	24	25	34
Pigmeat	63	66	85

### Section 4: Average weekly numbers of livestock slaughtered

Table 4 shows the average weekly slaughter figures for the last thirteen months. The monthly slaughter figures in section one are affected by the number of weeks in the statistical month. To get a clearer measure of trends weekly averages are calculated by dividing the number of livestock slaughtered each month by the number of weeks in the statistical month.

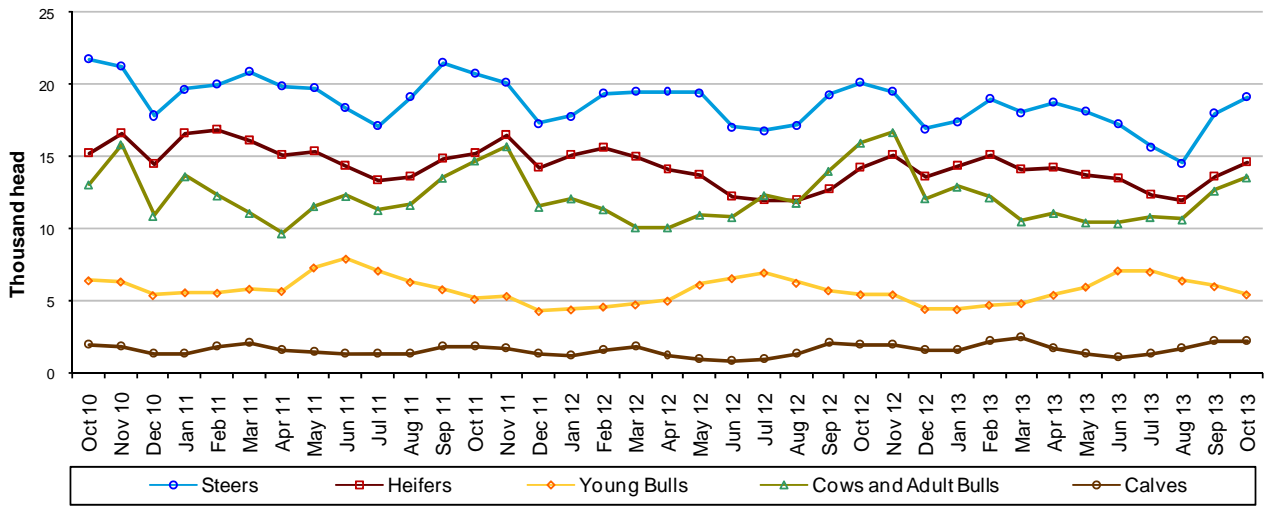
Longer term trends can be seen in Figures 4:1, 4:2 and 4:3, following this table.

**Table 4: United Kingdom average weekly numbers of livestock slaughtered**

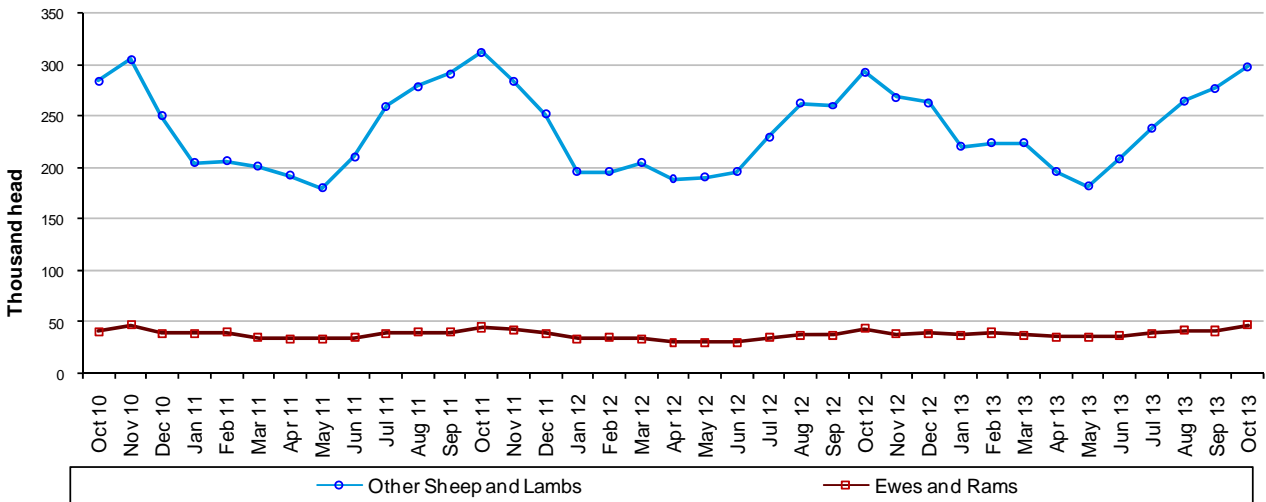
thousand head

	2012		2013										
	Oct	Nov	Dec	Jan	Feb	Mar	Apr	May	Jun	Jul	Aug	Sep	Oct
Steers	20	20	17	17	19	18	19	18	17	16	15	18	19
Heifers	14	15	14	14	15	14	14	14	13	12	12	14	15
Young Bulls	5	5	4	4	5	5	5	6	7	7	6	6	5
Cows and Adult Bulls	16	17	12	13	12	10	11	10	10	11	11	13	14
Calves	2	2	2	2	2	2	2	1	1	1	2	2	2
Other Sheep and Lambs	293	268	263	220	224	224	196	182	209	239	265	277	297
Ewes and Rams	44	38	39	38	40	37	35	36	37	39	43	42	47
Clean Pigs	201	208	192	189	197	192	189	183	186	193	192	198	202
Sows and Boars	5	5	4	5	5	5	5	5	5	5	5	5	5

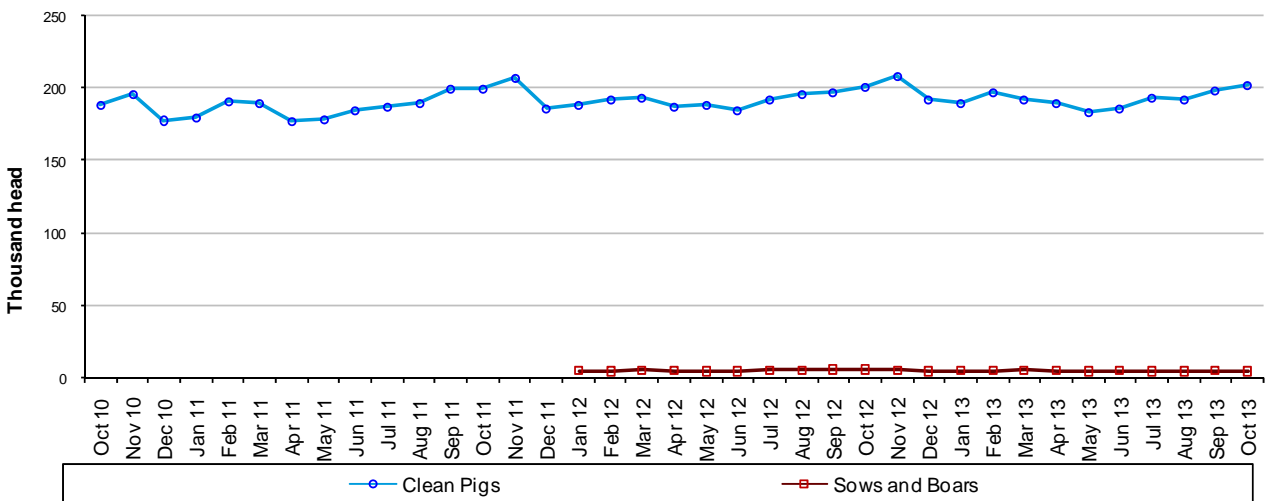
**Figure 4:1 United Kingdom average weekly numbers of cattle slaughtered**



**Figure 4:2 United Kingdom average weekly numbers of sheep slaughtered**



**Figure 4:3 United Kingdom average weekly numbers of pigs slaughtered**



Data for Oct 10 – Dec 11 is confidential

## Section 5: Monthly numbers of livestock slaughtered by country

Table 5 shows monthly estimates of the number of cattle, sheep and pigs slaughtered for meat in England and Wales, Scotland, Great Britain and Northern Ireland. Data are shown in statistical months, rather than calendar months. The totals for the countries may not add up to the Great Britain totals or the United Kingdom totals in section one, due to rounding.

**Table 5: United Kingdom monthly numbers of livestock slaughtered by country**

	August 2013	September 2013	October 2013
	4 weeks	4 weeks	5 weeks
<b>England &amp; Wales</b>			
Steers	35	45	58
Heifers	29	34	44
Young Bulls	15	16	18
Cows and Adult Bulls	30	38	49
Calves	6	8	10
Other Sheep and Lambs	907	942	1275
Ewes and Rams	165	160	227
Clean Pigs	623	644	827
Sows and Boars	19	20	24
<b>Scotland</b>			
Steers	14	15	20
Heifers	11	12	17
Young Bulls	4	3	3
Cows and Adult Bulls	5	6	7
Calves	0	0	0
Other Sheep and Lambs	111	120	154
Ewes and Rams	3	3	4
Clean Pigs	19	23	28
Sows and Boars	0	0	0
<b>Great Britain</b>			
Steers	49	61	78
Heifers	40	46	61
Young Bulls	19	19	21
Cows and Adult Bulls	35	43	56
Calves	6	8	10
Other Sheep and Lambs	1018	1062	1429
Ewes and Rams	167	163	231
Clean Pigs	642	668	854
Sows and Boars	19	20	24
<b>Northern Ireland</b>			
Steers	9	11	17
Heifers	8	8	12
Young Bulls	6	5	6
Cows and Adult Bulls	8	7	12
Calves	1	1	1
Other Sheep and Lambs	40	46	57
Ewes and Rams	3	3	4
Clean Pigs	128	125	157
Sows and Boars	0	0	0

## Section 6: Methodology, notes and revisions policy

1. The information in this notice is used by the UK government and the EU as evidence for assessing market conditions and evaluating agricultural policy. The slaughter statistics are also required by the EU under Regulation (EC) No 1165/2008. Other users include the food and farming industry, academia and the general public. Contact details are available on the front page of this notice, for you to send feedback or ask questions about the information provided.
2. Defra runs a monthly survey of registered England and Wales slaughterhouses. It is a statutory survey (approximately 105) that collects information on livestock slaughter numbers and weight of meat produced. All major slaughterhouses participate in the survey and the response rate is typically 100%. These data are supplemented by administrative data for smaller slaughterhouses. Similar surveys are run by RERAD in Scotland and by DARD in Northern Ireland. The England and Wales slaughter survey accounts for around 90% of the E&W slaughterhouse throughput for each livestock type.
3. Information on the weight of meat produced from a sample of animals weighed at slaughterhouses is obtained from survey respondents, around 55 slaughterhouse respondents. From the information provided average dressed carcass weights for each animal type are primarily calculated by adding up the total weight of the meat produced and dividing by the number of animals weighed. Cold dressed carcass weights are recorded.
4. The volume of meat production is estimated from the number of all livestock slaughtered and average dressed carcass weight information collected. This total 'Home killed' production includes livestock imported into the United Kingdom for slaughter.
5. The data are subject to a variety of validation checks which identify inconsistencies in the data. All data are cleaned prior to publication in discussion with the survey respondents.

### Revisions policy

6. Figures in this notice are provisional and subject to revision. We will provide information about any revisions we make to previously published information in this statistics notice and the associated datasets. Revisions could occur for various reasons, including:
  - a. if we have not received survey data from respondents we make an estimate based on their previous returns. These estimates will be replaced with actual survey data when it is received.
  - b. survey respondents occasionally supply amended figures for previous periods.
  - c. if we have not received administrative data for the smaller slaughterhouses we make an estimate based on previous data received. These estimates will be replaced with actual data when it is received.
7. **This month minor revisions have been made to the data from August 2013 onwards for the reasons given above.**