



UK SLAUGHTER STATISTICS

The latest National Statistics produced by Defra on UK slaughterings of cattle, sheep and pigs were released on 21 March 2013 according to the arrangements approved by the UK Statistics Authority.

This monthly notice will be updated at 09:30 on 18 April 2013.

Contents

Section 1	UK slaughter numbers	page 2
Section 2	UK average dressed carcase weights	page 2
Section 3	UK home-killed meat production	page 3
Section 4	UK average weekly slaughter estimates	page 3 to 4
Section 5	UK slaughterings by country	page 5
Section 6	Methodology, notes and revisions policy	page 6

Key points

This release shows the latest monthly information on the slaughtering of cattle, sheep and pigs. It also includes dressed carcase weight and meat production information. The key results for **February 2013** are given below:

- **Cattle:** UK prime cattle slaughterings were 2.1 per cent lower than in February 2012 at 155 thousand head. Beef and veal production was 68 thousand tonnes, 2.5 per cent lower than in February 2012.
- **Sheep:** UK clean sheep slaughterings were 14 per cent higher than in February 2012 at 896 thousand head. Mutton and lamb production was 21 thousand tonnes, 10.4 per cent higher than in February 2012.
- **Pigs:** UK clean pig slaughterings were 1.9 per cent higher than in February 2012 at 783 thousand head. Pigmeat production was 65 thousand tonnes, 2.7 per cent higher than in February 2012.

This notice and additional tables providing longer term trends of slaughterings, meat production and supplies are available to download at: <http://www.defra.gov.uk/statistics/foodfarm/food/slaughter/>

Enquiries to: Sarah Thompson, Department for Environment, Food and Rural Affairs, Room 301, Foss House, Kings Pool, 1 - 2 Peasholme Green, York YO1 7PX. Tel: ++ 44 (0)1904 455097, email:sarah.thompson@defra.gsi.gov.uk

A National Statistics publication. National Statistics are produced to high professional standards. They undergo regular quality assurance reviews to ensure that they meet customer needs. They are produced free from any political interference. For general enquiries about National Statistics, contact the National Statistics Public Enquiry Service: tel. 0845 601 3034 email info@statistics.gov.uk. You can also find National Statistics on the internet at www.statistics.gov.uk.

Section 1: UK monthly slaughter estimates

This table shows monthly estimates of the number of cattle, sheep and pigs slaughtered for meat for human consumption in the United Kingdom. The survey is run according to statistical, rather than calendar months, the number of weeks in the statistical month is specified below.

Table 1: UK monthly slaughter estimates Thousand Head

United Kingdom	December 2012 4 weeks	January 2013 5 weeks	February 2013 4 weeks
Steers	68	87	76
Heifers	54	72	60
Young Bulls	18	22	19
Cows and Adult Bulls	48	64	49
Calves	6	8	9
Other Sheep and Lambs	1053	1102	896
Ewes and Rams	157	189	157
Clean Pigs	766	946	783
Sows and Boars	17	25	20

* Data are confidential

Section 2: UK average dressed carcass weights

This table shows the monthly average dressed carcass weight of livestock slaughtered for meat for human consumption in the United Kingdom.

Table 2: UK average dressed carcass weights Kilogramme

United Kingdom	December 2012	January 2013	February 2013
Steers	362.1	363.4	363.6
Heifers	316.6	318.8	317.2
Young Bulls	344.4	340.4	331.7
Cows and Adult Bulls	305.4	307.9	309.0
Calves	49.2	47.8	37.5
Other Sheep and Lambs	18.2	19.0	19.1
Ewes and Rams	25.6	25.9	25.8
Clean Pigs	77.7	79.8	79.8
Sows and Boars	155.2	145.2	145.8

Section 3: UK monthly home-killed production of meat

This table shows the monthly volumes of meat produced in the United Kingdom. Data is shown according to statistical, rather than calendar months, number of weeks in statistical month as specified.

Table 3: UK monthly home-killed production of meat

Thousand Tonnes

United Kingdom	December 2012 4 weeks	January 2013 5 weeks	February 2013 4 weeks
Beef	63	82	68
Mutton and Lamb	23	26	21
Pigmeat	62	79	65

Section 4: UK average weekly slaughterings

This following table shows the average weekly slaughter figures for the last thirteen months. The monthly slaughter figures in section one are affected by the number of weeks in the statistical month. To get a clearer measure of trends weekly averages are calculated by dividing the number of livestock slaughtered each month by the number of weeks in the statistical month.

Longer term trends can be seen in the charts following this table.

Table 4: UK average weekly slaughterings

Thousand Head

United Kingdom	2012												2013	
	Feb	Mar	Apr	May	Jun	Jul	Aug	Sep	Oct	Nov	Dec	Jan	Feb	
Steers	19	20	20	19	17	17	17	19	20	20	17	17	19	
Heifers	16	15	14	14	12	12	12	13	14	15	14	14	15	
Young Bulls	5	5	5	6	7	7	6	6	5	5	4	4	5	
Cows and Adult Bulls	11	10	10	11	11	12	12	14	16	17	12	13	12	
Calves	2	2	1	1	1	1	1	2	2	2	2	2	2	
Other Sheep and Lambs	196	204	189	191	196	230	262	260	293	268	263	220	224	
Ewes and Rams	35	33	31	31	31	35	38	37	44	38	39	38	39	
Clean Pigs	192	193	187	189	185	192	195	197	201	208	192	189	196	
Sows and Boars	5	5	5	5	5	5	5	6	5	5	4	5	5	

Chart 4:1 United Kingdom average weekly slaughtering – Cattle

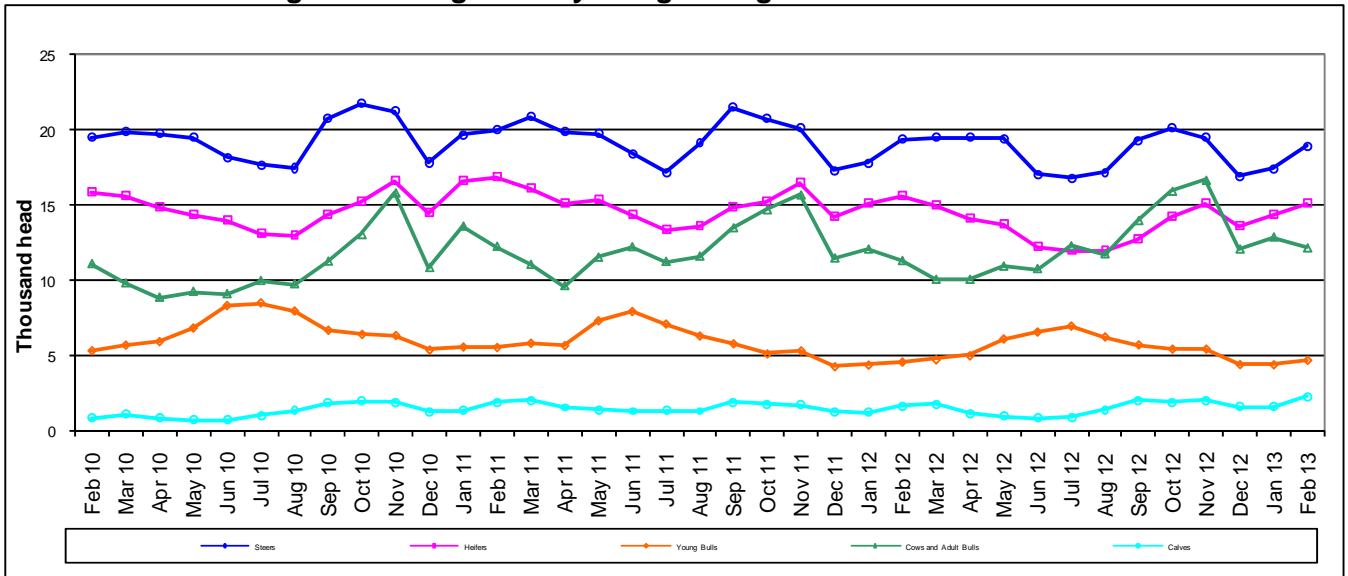


Chart 4:2 United Kingdom average weekly slaughtering – Sheep

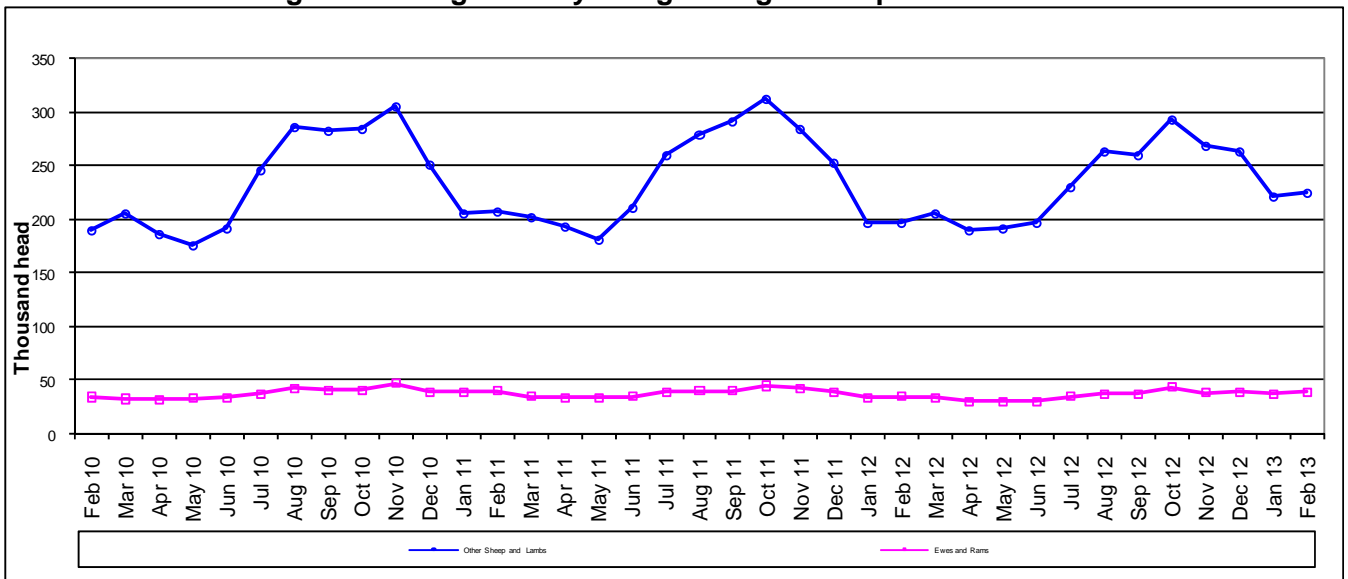
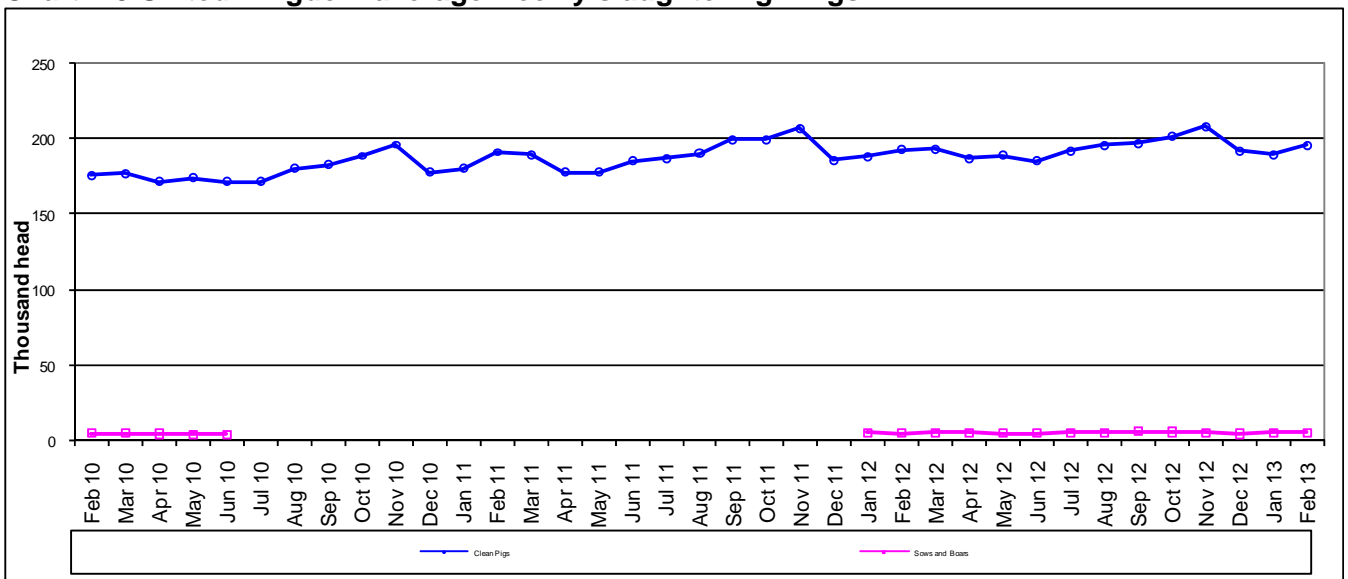


Chart 4:3 United Kingdom average weekly slaughtering - Pigs



Section 5: UK slaughterings by country

This table shows monthly estimates of the number of cattle, sheep and pigs slaughtered for meat in England and Wales, Scotland, Great Britain and Northern Ireland. Data are shown in statistical months, rather than calendar months. The totals for the countries may not add up to the Great Britain totals or the United Kingdom totals in section one, due to rounding.

Table 5: UK slaughterings by country

Thousand Head

	December 2012 4 weeks	January 2013 5 weeks	February 2013 4 weeks
England & Wales			
Steers	40	52	46
Heifers	30	41	35
Young Bulls	12	15	12
Cows and Adult Bulls	35	48	36
Calves	6	7	8
Other Sheep and Lambs	917	937	767
Ewes and Rams	152	182	153
Clean Pigs	628	762	631
Sows and Boars	17	25	20
Scotland			
Steers	15	20	18
Heifers	14	18	15
Young Bulls	2	2	1
Cows and Adult Bulls	5	6	5
Calves	0	0	0
Other Sheep and Lambs	104	134	110
Ewes and Rams	2	2	2
Clean Pigs	23	29	25
Sows and Boars	0	0	0
Great Britain			
Steers	56	72	64
Heifers	44	59	50
Young Bulls	14	17	14
Cows and Adult Bulls	40	54	41
Calves	6	7	9
Other Sheep and Lambs	1021	1071	878
Ewes and Rams	154	185	154
Clean Pigs	652	792	657
Sows and Boars	17	25	20
Northern Ireland			
Steers	12	15	12
Heifers	10	13	10
Young Bulls	4	5	5
Cows and Adult Bulls	9	10	7
Calves	0	1	0
Other Sheep and Lambs	32	31	18
Ewes and Rams	3	4	3
Clean Pigs	115	155	127
Sows and Boars	0	0	0

Section 6: Methodology, Notes and Revisions Policy

1. The information in this notice is used by the UK government and the EU as evidence for assessing market conditions and evaluating agricultural policy. The slaughter statistics are also required by the EU under Regulation (EC) No 1165/2008. Other users include the food and farming industry, academia and the general public. Contact details are available on the front page of this notice, for you to send feedback or ask questions about the information provided.
2. Defra runs a monthly survey of registered England and Wales slaughterhouses. It is a statutory survey of 106 respondents that collects information on livestock slaughter numbers and weight of meat produced. All major slaughterhouses participate in the survey and the response rate is typically 100%. These data are supplemented by administrative data for smaller slaughterhouses. Similar surveys are run by RERAD in Scotland and by DARD in Northern Ireland. The England and Wales slaughter survey accounts for around 90% of the E&W slaughterhouse throughput for each livestock type.
3. Information on the weight of meat produced from a sample of animals weighed at slaughterhouses is obtained from survey respondents, around 55 slaughterhouse respondents. From the information provided average dressed carcass weights for each animal type are primarily calculated by adding up the total weight of the meat produced and dividing by the number of animals weighed. Cold dressed carcass weights are recorded.
4. The volume of meat production is estimated from the number of all livestock slaughtered and average dressed carcass weight information collected. Home killed production includes livestock imported into the United Kingdom for slaughter.
5. The data are subject to a variety of validation checks which identify inconsistencies in the data. All data are cleaned prior to publication in discussion with the survey respondents.

Revisions Policy

6. Figures in this notice are provisional and subject to revision. We will provide information about any revisions we make to previously published information in this statistics notice and the associated datasets. Revisions could occur for various reasons, including:
 - a. if we have not received survey data from respondents we make an estimate based on their previous returns. These estimates will be replaced with actual survey data when it is received.
 - b. survey respondents occasionally supply amended figures for previous periods.
 - c. if we have not received administrative data for the smaller slaughterhouses we make an estimate based on previous data received. These estimates will be replaced with actual data when it is received.
7. **This month revisions have been made to the data from January 2013 onwards.**