



# Catfish Feed Deliveries

ISSN: 1944-9267

Released February 21, 2012, by the National Agricultural Statistics Service (NASS), Agricultural Statistics Board, United States Department of Agriculture (USDA).

## January 2012 Catfish Feed Deliveries Up 420 Percent from Last Year

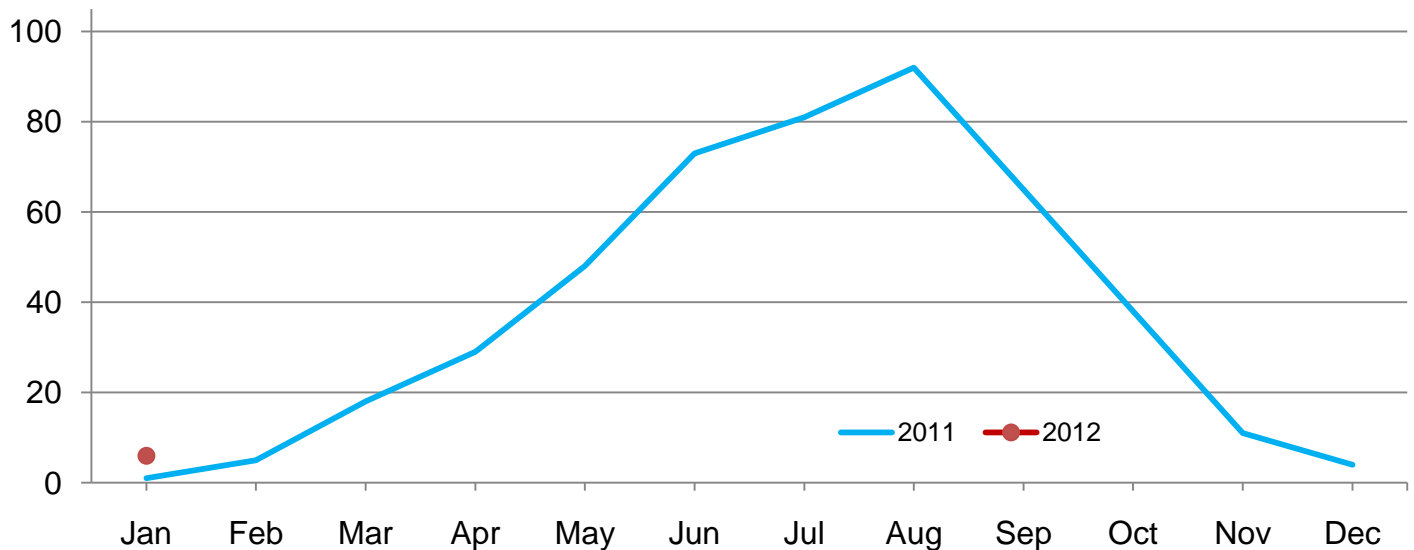
Total catfish feed delivered in the United States during January 2012 was 5,834 tons, up 420 percent from January 2011, and up 47 percent from the previous month. Foodsize catfish feed delivered totaled 5,658 tons, up 441 percent from the corresponding month a year ago. Feed delivered for fingerlings and broodfish totaled 176 tons, up 132 percent from the corresponding month a year ago.

January feed delivered to Alabama catfish growers for foodsize fish totaled 2,718 tons, up significantly from last year. Alabama accounted for 48 percent of the total foodsize catfish feed delivered to United States farmers.

The other major States with catfish feed deliveries for foodsize fish in January and their comparison to the previous year were Arkansas with 269 tons, up 417 percent; Louisiana with 8 tons, down 56 percent; and Mississippi with 1706 tons, up 716 percent.

## Foodsize Catfish Feed Delivered – United States

Thousand tons



## Foodsize Catfish Feed Delivered – United States: 2011-2012

[Blank data cells indicate estimation period has not yet begun]

Month	By month		2012 as percent of 2011	Cumulative		2012 as percent of 2011
	2011	2012		2011	2012	
	(tons)	(tons)	(percent)	(tons)	(tons)	(percent)
January .....	1,045	5,658	541	1,045	5,658	541
February .....	4,631			5,676		
March .....	17,797			23,473		
April .....	29,131			52,604		
May .....	47,896			100,500		
June .....	73,483			173,983		
July .....	80,905			254,888		
August .....	92,282			347,170		
September .....	65,023			412,193		
October .....	37,703			449,896		
November .....	11,407			461,303		
December .....	3,930			465,233		

## Fingerlings and Broodfish Catfish Feed Delivered – United States: 2011-2012

[Blank data cells indicate estimation period has not yet begun. To avoid disclosure of individual operations, State sums may not equal the total]

Month	By month		2012 as percent of 2011	Cumulative		2012 as percent of 2011
	2011	2012		2011	2012	
	(tons)	(tons)	(percent)	(tons)	(tons)	(percent)
January .....	76	176	232	76	176	232
February .....	328			404		
March .....	568			972		
April .....	1,177			2,149		
May .....	2,172			4,321		
June .....	4,038			8,359		
July .....	5,831			14,190		
August .....	8,210			22,400		
September .....	3,734			26,134		
October .....	2,311			28,445		
November .....	1,176			29,621		
December .....	30			29,651		

## Foodsize Catfish Delivered – Alabama: 2011-2012

[Blank data cells indicate estimation period has not yet begun]

Month	By month		2012 as percent of 2011	Cumulative		2012 as percent of 2011
	2011	2012		2011	2012	
	(tons)	(tons)	(percent)	(tons)	(tons)	(percent)
January .....	212	2,718	1,282	212	2,718	1,282
February .....	1,647			1,859		
March .....	7,597			9,456		
April .....	10,192			19,648		
May .....	18,168			37,816		
June .....	27,706			65,522		
July .....	27,527			93,049		
August .....	32,038			125,087		
September .....	21,310			146,397		
October .....	12,706			159,103		
November .....	4,924			164,027		
December .....	1,841			165,868		

## Foodsize Catfish Feed Delivered – Arkansas: 2011-2012

[Blank data cells indicate estimation period has not yet begun]

Month	By month		2012 as percent of 2011	Cumulative		2012 as percent of 2011
	2011	2012		2011	2012	
	(tons)	(tons)	(percent)	(tons)	(tons)	(percent)
January .....	52	269	517	52	269	517
February .....	462			514		
March .....	1,431			1,945		
April .....	2,548			4,493		
May .....	3,924			8,417		
June .....	5,970			14,387		
July .....	6,792			21,179		
August .....	7,042			28,221		
September .....	5,766			33,987		
October .....	3,097			37,084		
November .....	603			37,687		
December .....	129			37,816		

## Fingerlings and Broodfish Catfish Feed Delivered – Arkansas: 2011-2012

[Blank data cells indicate estimation period has not yet begun]

Month	By month		2012 as percent of 2011	Cumulative		2012 as percent of 2011
	2011	2012		2011	2012	
	(tons)	(tons)	(percent)	(tons)	(tons)	(percent)
January .....	10	4	40	10	4	40
February .....	96			106		
March .....	133			239		
April .....	131			370		
May .....	403			773		
June .....	658			1,431		
July .....	676			2,107		
August .....	1,361			3,468		
September .....	912			4,380		
October .....	605			4,985		
November .....	125			5,110		
December .....	-			5,110		

- Represents zero.

### Foodsize Catfish Feed Delivered – Louisiana: 2011-2012

[Blank data cells indicate estimation period has not yet begun]

Month	By month		2012 as percent of 2011	Cumulative		2012 as percent of 2011
	2011	2012		2011	2012	
	(tons)	(tons)	(percent)	(tons)	(tons)	(percent)
January .....	18	8	44	18	8	44
February .....	83			101		
March .....	298			399		
April .....	348			747		
May .....	493			1,240		
June .....	537			1,777		
July .....	339			2,116		
August .....	503			2,619		
September .....	272			2,891		
October .....	154			3,045		
November .....	48			3,093		
December .....	30			3,123		

### Foodsize Catfish Feed Delivered – Mississippi: 2011-2012

[Blank data cells indicate estimation period has not yet begun]

Month	By month		2012 as percent of 2011	Cumulative		2012 as percent of 2011
	2011	2012		2011	2012	
	(tons)	(tons)	(percent)	(tons)	(tons)	(percent)
January .....	209	1,706	816	209	1,706	816
February .....	1,456			1,665		
March .....	5,746			7,411		
April .....	12,757			20,168		
May .....	21,465			41,633		
June .....	33,344			74,977		
July .....	40,684			115,661		
August .....	46,342			162,003		
September .....	32,582			194,585		
October .....	16,991			211,576		
November .....	3,155			214,731		
December .....	758			215,489		

### Fingerlings and Broodfish Catfish Feed Delivered – Mississippi: 2011-2012

[Blank data cells indicate estimation period has not yet begun]

Month	By month		2012 as percent of 2011	Cumulative		2012 as percent of 2011
	2011	2012		2011	2012	
	(tons)	(tons)	(percent)	(tons)	(tons)	(percent)
January .....	47	149	317	47	149	317
February .....	204			251		
March .....	365			616		
April .....	1,000			1,616		
May .....	1,657			3,273		
June .....	3,277			6,550		
July .....	5,036			11,586		
August .....	6,642			18,228		
September .....	2,526			20,754		
October .....	1,590			22,344		
November .....	1,029			23,373		
December .....	13			23,386		

## Foodsize Catfish Feed Delivered – Other States East of the Mississippi River: 2011-2012

[Blank data cells indicate estimation period has not yet begun]

Month	By month		2012 as percent of 2011	Cumulative		2012 as percent of 2011
	2011	2012		2011	2012	
	(tons)	(tons)	(percent)	(tons)	(tons)	(percent)
January .....	88	89	101	88	89	101
February .....	304			392		
March .....	1,362			1,754		
April .....	1,505			3,259		
May .....	1,338			4,597		
June .....	1,914			6,511		
July .....	1,914			8,425		
August .....	2,113			10,538		
September .....	1,667			12,205		
October .....	1,932			14,137		
November .....	728			14,865		
December .....	181			15,046		

## Foodsize Catfish Feed Delivered – Other States West of the Mississippi River: 2011-2012

[Blank data cells indicate estimation period has not yet begun]

Month	By month		2012 as percent of 2011	Cumulative		2012 as percent of 2011
	2011	2012		2011	2012	
	(tons)	(tons)	(percent)	(tons)	(tons)	(percent)
January .....	466	868	186	466	868	186
February .....	679			1,145		
March .....	1,363			2,508		
April .....	1,781			4,289		
May .....	2,508			6,797		
June .....	4,012			10,809		
July .....	3,649			14,458		
August .....	4,244			18,702		
September .....	3,426			22,128		
October .....	2,823			24,951		
November .....	1,949			26,900		
December .....	991			27,891		

## Fingerlings and Broodfish Catfish Feed Delivered – Other States West of the Mississippi River: 2011-2012

[Blank data cells indicate estimation period has not yet begun]

Month	By month		2012 as percent of 2011	Cumulative		2012 as percent of 2011
	2011	2012		2011	2012	
	(tons)	(tons)	(percent)	(tons)	(tons)	(percent)
January .....	-	16	(X)	-	16	(X)
February .....	-			-		
March .....	18			18		
April .....	6			24		
May .....	5			29		
June .....	18			47		
July .....	4			51		
August .....	95			146		
September .....	97			243		
October .....	14			257		
November .....	4			261		
December .....	2			263		

- Represents zero.

(X) Not applicable.

## Statistical Methodology

**Survey Procedures:** All participating catfish feed mills are feed mills that produce and deliver catfish feed to bonafide catfish producers. Survey data for catfish feed are collected from feed mills by the USDA-NASS Mississippi Field Office, which is responsible for ensuring survey coverage is as complete as possible. Mills are contacted by mail, telephone, fax, or internet. Diligent effort is made to ensure that all operations are accounted for in the estimate.

**Estimation Procedures:** The *Catfish Feed Deliveries* report refers strictly to catfish feed **delivered** to bonafide catfish producers and excludes catfish feed delivered to producers of other species. The totals include both bagged and bulk feed. Prior to summarization, questionnaires are compared to previous reports for comparability. Estimates are made for feed mills whose reports are not available in time to be included in the release. Those mills are identified by an asterisk on page 10 of this release. Estimates are based on the mill's previous reports and current conditions. Published totals are a straight summation of the individual reports and estimated data.

If a mill uses a fiscal accounting system, proration is used to convert reported data to a calendar month basis.

Two unusual features of this report are worthy of note: (1) cooperating feed mills are listed by name, and (2) it is impossible for the public to infer the amount of catfish feed **produced** in each State. Since many mills **deliver** feed to more than one State and to growers of other species, any inferences about overall production per State or per mill are not valid.

**Revision Policy:** Revisions may be necessary in the following month's publication pending a review of late reports received from mills. Revisions to previous estimates are made to improve month-to-month relationships. Estimates for the previous month are subject to revision in all States and regions monthly totals. In February, all monthly estimates for the previous year are reviewed and subject to revisions. The review is primarily based on data that may have been received after the original estimates were published.

**Reliability:** Estimates are based on data from cooperating catfish feed mills, and therefore have no sampling variability. However, estimates may be subject to errors such as omissions, duplication, mistakes in reporting, recording, and processing of data. These errors are minimized through strict quality controls in the edit and summarization process and a careful review of all reported data for consistency and reasonableness.

### Data were compiled in cooperation with the following feed mills:

Alabama Feed Mill LLC  
Carolina Fish Feeds  
Delta Western  
Fishbelt Feeds Inc.  
Flint River Mills Inc.

Land O Lakes  
Rangen Inc.  
SouthFresh Feeds  
Star Milling Co.  
Topwater Feed Mill

## Terms and Definitions Used for Catfish Feed Deliveries Estimates

**Broodfish** - Fish kept for egg production, including males. Broodfish produce the fertilized eggs that go to hatcheries. The most desirable size is 3 to 10 pounds or 4 to 6 years of age.

**Catfish Feed** - For the purposes of this report catfish feed is defined as feed *delivered* to bonafide catfish producers. Thus, it is not the absolute total amount of feed produced or even sold by a mill. (Some catfish feed is sold to producers of other species of fish.) The definition includes medicated feed. Catfish feed is designed to float on the surface of the water. Catfish are fed this way from the moment they hatch. Therefore, they learn to go to the surface for feed. The result is a clean nutritious diet for American farm raised catfish.

**Catfish Feed for Foodsize Fish** - Feed containing pellets larger than 1/8 of an inch.

**Catfish Feed for Fingerlings/Broodfish** - Feed containing pellets 1/8 of an inch or smaller.

**Fingerlings** – Fish weighing 2 to 60 pounds per 1,000 fish or 2 to 6 inches in length.

**Foodsize Fish** - Fish being grown commercially for human consumption. Optimum sizes at harvest depend on the market but are generally no lower than 3/4 pound but near one pound.

## Information Contacts

Listed below are the commodity specialists in the Livestock Branch of the National Agricultural Statistics Service to contact for additional information. E-mail inquiries may be sent to [nass@nass.usda.gov](mailto:nass@nass.usda.gov)

Dan Kerestes, Chief, Livestock Branch .....	(202) 720-3570
Bruce Boess, Head, Poultry and Specialty Commodities Section .....	(202) 720-4447
Cody Brokmeyer – Honey, Poultry Slaughter, Turkey Hatchery, Turkeys Raised .....	(202) 690-3237
Charles Butler – Catfish Feed Deliveries .....	(601) 965-4575
David Colwell – Cold Storage .....	(202) 720-8784
Kim Linonis – Layers, Eggs .....	(202) 690-8632
Miste Salmon – Broiler Hatchery, Chicken Hatchery, Catfish Processing, Catfish Production, Trout Production, Census of Aquaculture, Egg Products, Mink .....	(202) 720-3244

## Access to NASS Reports

For your convenience, you may access NASS reports and products the following ways:

- All reports are available electronically, at no cost, on the NASS web site: <http://www.nass.usda.gov>
- Both national and state specific reports are available via a free e-mail subscription. To set-up this free subscription, visit <http://www.nass.usda.gov> and in the “Receive NASS Updates” box under “Receive reports by Email,” click on “National” or “State” to select the reports you would like to receive.
- Printed reports may be purchased from the National Technical Information Service (NTIS) by calling toll-free (800) 999-6779, or (703) 605-6220 if calling from outside the United States or Canada. Accepted methods of payment are Visa, MasterCard, check, or money order.

For more information on NASS surveys and reports, call the NASS Agricultural Statistics Hotline at (800) 727-9540, 7:30 a.m. to 4:00 p.m. ET, or e-mail: [nass@nass.usda.gov](mailto:nass@nass.usda.gov).

The United States Department of Agriculture (USDA) prohibits discrimination in all its programs and activities on the basis of race, color, national origin, age, disability, and where applicable, sex, marital status, familial status, parental status, religion, sexual orientation, political beliefs, genetic information, reprisal, or because all or a part of an individual's income is derived from any public assistance program. (Not all prohibited bases apply to all programs.) Persons with disabilities who require alternative means for communication of program information (Braille, large print, audiotape, etc.) should contact USDA's TARGET Center at (202) 720-2600 (voice and TDD).

To file a complaint of discrimination, write to USDA, Assistant Secretary for Civil Rights, Office of the Assistant Secretary for Civil Rights, 1400 Independence Avenue, S.W., Stop 9410, Washington, DC 20250-9410, or call toll-free at (866) 632-9992 (English) or (800) 877-8339 (TDD) or (866) 377-8642 (English Federal-relay) or (800) 845-6136 (Spanish Federal-relay). USDA is an equal opportunity provider and employer.