

## UK SLAUGHTER STATISTICS

The latest National Statistics produced by Defra on UK slaughterings of cattle, sheep and pigs were released on 21 June 2012 according to the arrangements approved by the UK Statistics Authority.

This monthly notice will be updated at 09:30 on 19 July 2012.

### Contents

Section 1	UK slaughter numbers	page 2
Section 2	UK average dressed carcass weights	page 2
Section 3	UK home-killed meat production	page 3
Section 4	UK average weekly slaughter estimates	page 3 to 4
Section 5	UK slaughterings by country	page 5
Section 6	Methodology, notes and revisions policy	page 6

### Key points

This release shows the latest monthly information on the slaughtering of cattle, sheep and pigs. It also includes dressed carcass weight and meat production information. The key results for **May 2012** are given below:

- **Cattle:** UK prime cattle slaughterings were 8 per cent lower than in May 2011 at 156 thousand head. Beef and veal production was 69 thousand tonnes, 6 per cent lower than in May 2011.
- **Sheep:** UK clean sheep slaughterings were 5 per cent higher than in May 2011 at 757 thousand head. Mutton and lamb production was 18 thousand tonnes, 6 per cent higher than in May 2011.
- **Pigs:** UK clean pig slaughterings were 6 per cent higher than in May 2011 at 753 thousand head. Pigmeat production was 62 thousand tonnes, 6 per cent higher than in May 2011.

This notice and additional tables providing longer term trends of slaughterings, meat production and supplies are available to download at: <http://www.defra.gov.uk/statistics/foodfarm/food/slaughter/>

---

**Enquiries to:** Sarah Thompson, Department for Environment, Food and Rural Affairs, Room 301, Foss House, Kings Pool, 1 - 2 Peasholme Green, York YO1 7PX. Tel: ++ 44 (0)1904 455097, email:sarah.thompson@defra.gsi.gov.uk

**A National Statistics publication.** National Statistics are produced to high professional standards. They undergo regular quality assurance reviews to ensure that they meet customer needs. They are produced free from any political interference. For general enquiries about National Statistics, contact the National Statistics Public Enquiry Service: tel. 0845 601 3034 email [info@statistics.gov.uk](mailto:info@statistics.gov.uk). You can also find National Statistics on the internet at [www.statistics.gov.uk](http://www.statistics.gov.uk).

---

## Section 1: UK monthly slaughter estimates

This table shows monthly estimates of the number of cattle, sheep and pigs slaughtered for meat for human consumption in the United Kingdom. The survey is run according to statistical, rather than calendar months, the number of weeks in the statistical month is specified below.

**Table 1: UK monthly slaughter estimates** Thousand Head

United Kingdom	March 2012 4 weeks	April 2012 5 weeks	May 2012 4 weeks
Steers	78	98	78
Heifers	60	70	54
Young Bulls	19	25	24
Cows and Adult Bulls	40	50	44
Calves	7	6	4
Other Sheep and Lambs	818	944	757
Ewes and Rams	134	155	123
Clean Pigs	771	934	753
Sows and Boars	21	24	19

## Section 2: UK average dressed carcass weights

This table shows the monthly average dressed carcass weight of livestock slaughtered for meat for human consumption in the United Kingdom.

**Table 2: UK average dressed carcass weights** Kilogramme

United Kingdom	March 2012	April 2012	May 2012
Steers	371.3	372.2	371.0
Heifers	324.2	323.9	323.7
Young Bulls	346.4	348.8	349.1
Cows and Adult Bulls	321.5	319.6	321.6
Calves	45.6	50.4	48.4
Other Sheep and Lambs	20.1	19.8	19.8
Ewes and Rams	26.4	27.7	27.5
Clean Pigs	78.8	77.8	77.9
Sows and Boars	148.8	151.6	151.3

### Section 3: UK monthly home-killed production of meat

This table shows the monthly volumes of meat produced in the United Kingdom. Data is shown according to statistical, rather than calendar months, number of weeks in statistical month as specified.

**Table 3: UK monthly home-killed production of meat**

Thousand Tonnes

United Kingdom	March 2012 4 weeks	April 2012 5 weeks	May 2012 4 weeks
Beef	68	84	69
Mutton and Lamb	20	23	18
Pigmeat	64	76	62

### Section 4: UK average weekly slaughterings

This following table shows the average weekly slaughter figures for the last thirteen months. The monthly slaughter figures in section one are affected by the number of weeks in the statistical month. To get a clearer measure of trends weekly averages are calculated by dividing the number of livestock slaughtered each month by the number of weeks in the statistical month.

Longer term trends can be seen in the charts following this table.

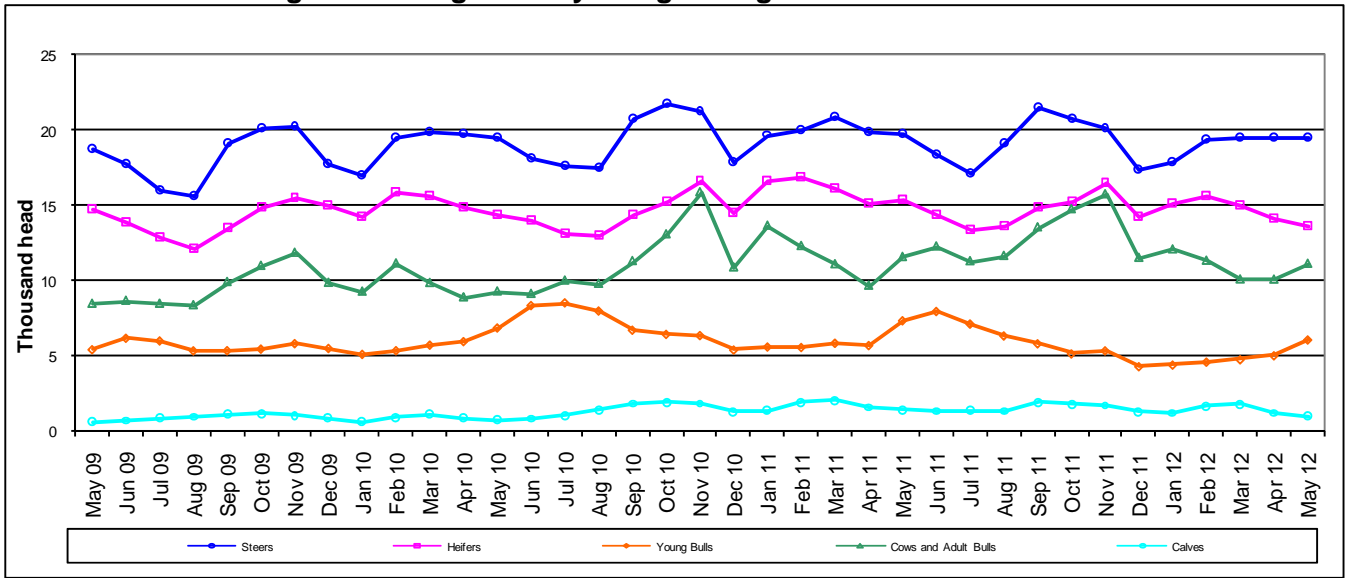
**Table 4: UK average weekly slaughterings**

Thousand Head

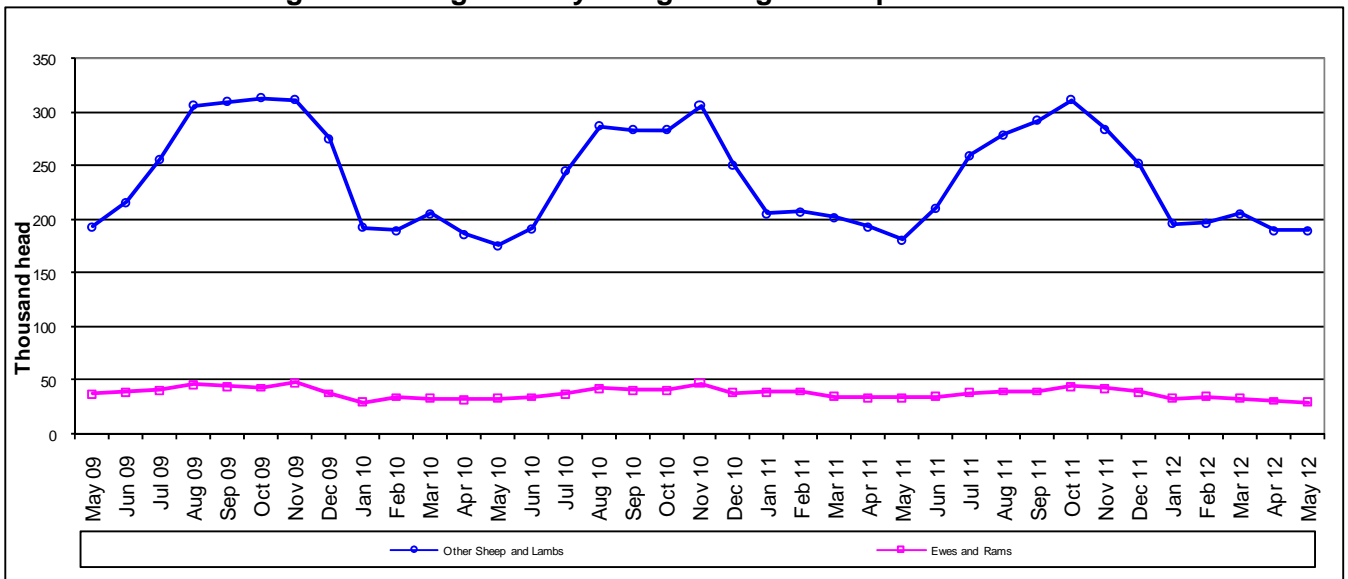
United Kingdom	2011					2012							
	May	Jun	Jul	Aug	Sep	Oct	Nov	Dec	Jan	Feb	Mar	Apr	May
Steers	20	18	17	19	22	21	20	17	18	19	20	20	20
Heifers	15	14	13	14	15	15	16	14	15	16	15	14	14
Young Bulls	7	8	7	6	6	5	5	4	4	5	5	5	6
Cows and Adult Bulls	12	12	11	12	13	15	16	11	12	11	10	10	11
Calves	1	1	1	1	2	2	2	1	1	2	2	1	1
Other Sheep and Lambs	180	211	260	279	291	312	284	252	195	196	204	189	189
Ewes and Rams	34	35	39	40	40	45	43	39	34	35	33	31	31
Clean Pigs	178	185	187	190	199	199	207	186	188	192	193	187	188
Sows and Boars	*	*	*	*	*	*	*	*	5	5	5	5	5

\* Data are confidential

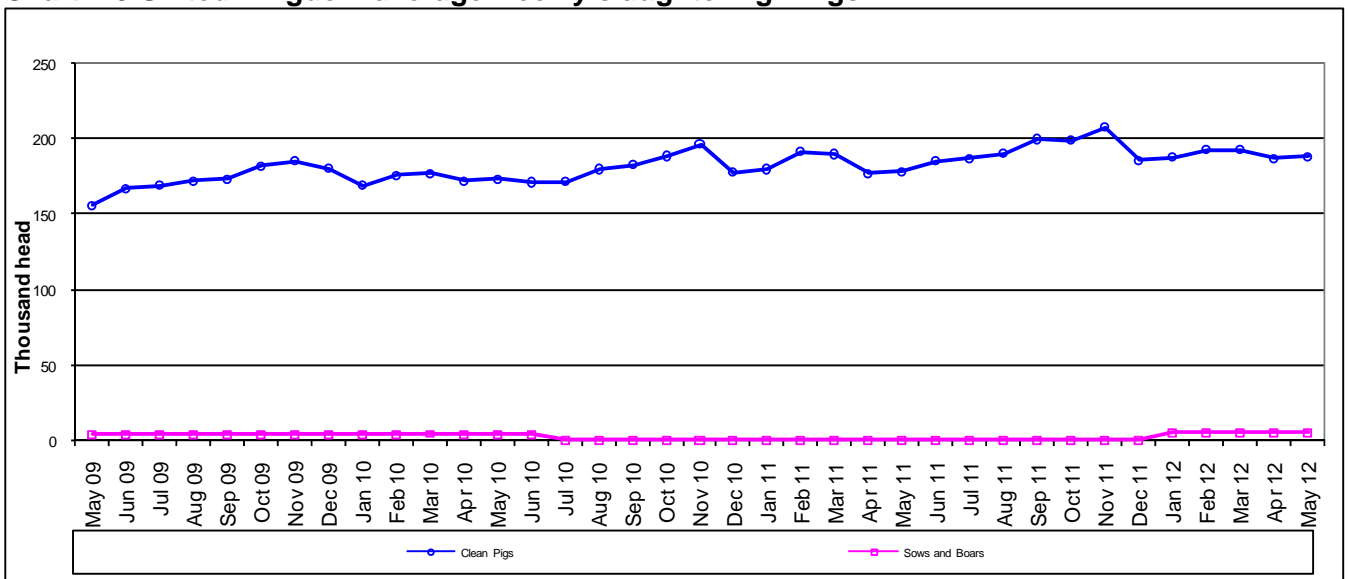
**Chart 4:1 United Kingdom average weekly slaughtering – Cattle**



**Chart 4:2 United Kingdom average weekly slaughtering – Sheep**



**Chart 4:3 United Kingdom average weekly slaughtering - Pigs**



## Section 5: UK slaughterings by country

This table shows monthly estimates of the number of cattle, sheep and pigs slaughtered for meat in England and Wales, Scotland, Great Britain and Northern Ireland. Data are shown in statistical months, rather than calendar months. The totals for the countries may not add up to the Great Britain totals or the United Kingdom totals in section one, due to rounding.

**Table 5: UK slaughterings by country**

Thousand Head

	March 2012 4 weeks	April 2012 5 weeks	May 2012 4 weeks
<b>England &amp; Wales</b>			
Steers	49	60	47
Heifers	37	43	34
Young Bulls	13	17	17
Cows and Adult Bulls	31	38	32
Calves	7	5	3
Other Sheep and Lambs	694	803	677
Ewes and Rams	130	149	119
Clean Pigs	598	724	581
Sows and Boars	21	24	19
<b>Scotland</b>			
Steers	18	22	19
Heifers	14	16	12
Young Bulls	2	3	3
Cows and Adult Bulls	4	5	5
Calves	0	0	0
Other Sheep and Lambs	108	122	56
Ewes and Rams	2	2	1
Clean Pigs	49	58	48
Sows and Boars	0	0	0
<b>Great Britain</b>			
Steers	67	82	66
Heifers	51	59	46
Young Bulls	15	20	19
Cows and Adult Bulls	35	43	37
Calves	7	5	4
Other Sheep and Lambs	802	925	733
Ewes and Rams	131	151	120
Clean Pigs	646	781	630
Sows and Boars	21	24	19
<b>Northern Ireland</b>			
Steers	11	15	12
Heifers	9	11	9
Young Bulls	4	5	5
Cows and Adult Bulls	6	7	7
Calves	0	0	0
Other Sheep and Lambs	15	20	23
Ewes and Rams	2	3	3
Clean Pigs	124	153	123
Sows and Boars	0	0	0

## Section 6: Methodology, Notes and Revisions Policy

1. The information in this notice is used by the UK government and the EU as evidence for assessing market conditions and evaluating agricultural policy. The slaughter statistics are also required by the EU under Regulation (EC) No 1165/2008. Other users include the food and farming industry, academia and the general public. Contact details are available on the front page of this notice, for you to send feedback or ask questions about the information provided.
2. Defra runs a monthly survey of registered England and Wales slaughterhouses. It is a statutory survey of 109 respondents that collects information on livestock slaughter numbers and weight of meat produced. All major slaughterhouses participate in the survey and the response rate is typically 100%. These data are supplemented by administrative data for smaller slaughterhouses. Similar surveys are run by RERAD in Scotland and by DARD in Northern Ireland. The England and Wales slaughter survey accounts for around 90% of the E&W slaughterhouse throughput for each livestock type.
3. Information on the weight of meat produced from a sample of animals weighed at slaughterhouses is obtained from survey respondents, around 55 slaughterhouse respondents. From the information provided average dressed carcass weights for each animal type are primarily calculated by adding up the total weight of the meat produced and dividing by the number of animals weighed. Cold dressed carcass weights are recorded.
4. The volume of meat production is estimated from the number of all livestock slaughtered and average dressed carcass weight information collected. Home killed production includes livestock imported into the United Kingdom for slaughter.
5. The data are subject to a variety of validation checks which identify inconsistencies in the data. All data are cleaned prior to publication in discussion with the survey respondents.

### Revisions Policy

6. Figures in this notice are provisional and subject to revision. We will provide information about any revisions we make to previously published information in this statistics notice and the associated datasets. Revisions could occur for various reasons, including:
  - a. if we have not received survey data from respondents we make an estimate based on their previous returns. These estimates will be replaced with actual survey data when it is received.
  - b. survey respondents occasionally supply amended figures for previous periods.
  - c. if we have not received administrative data for the smaller slaughterhouses we make an estimate based on previous data received. These estimates will be replaced with actual data when it is received.
7. **This month revisions have been made to the data from April 2012 onwards.**