



POULTRY AND POULTRY MEAT STATISTICS

The latest National Statistics produced by Defra on the activity of UK hatcheries and poultry slaughterhouses and other related poultry statistics were released on 24 January 2013 according to the arrangements approved by the UK Statistics Authority.

This notice will be updated at 09:30 on 28 February 2013.

Contents:

- Section 1: UK Hatcheries Data – Chick Placings and Eggs Set
- Section 2: UK Poultry Slaughter, Average Weights and Poultry Meat Production
- Section 3: Methodology, notes and revisions policy

Key points

This release shows the latest monthly information on poultry outputs, including hatchery, slaughtering, production and trade statistics. The key results for **December 2012** are given below:

- UK broiler chick placings were 3.1 per cent higher than December 2011 at 72 million birds and for the year 2.4 per cent higher than 2011 at 918 million birds. UK turkey placings were 8.9 per cent higher than December 2011 at 1.0 million birds and for the year 6.0 per cent higher at 18 million birds.
- UK broiler slaughterings were 2.7 per cent higher than December 2011 at 66 million birds, with the total for 2012 rising by 2.1 per cent to 873 million birds. UK turkey slaughterings were 0.2 per cent higher than December 2011 at 2.1 million birds, with the total for 2012 rising by 9.6 per cent to 19 million birds.
- UK poultry meat production was 125 thousand tonnes, 1.1 per cent higher than December 2011, with 2012 increasing by 3.2 per cent to 1.6 million tonnes compared to 2011.

This notice and additional tables are available to download at:
<http://www.defra.gov.uk/statistics/foodfarm/food/poultry/>

Enquiries to: Sarah Thompson, Department for Environment, Food and Rural Affairs, Room 301, Foss House, Kings Pool, 1 - 2 Peasholme Green, York YO1 7PX. Tel: ++ 44 (0)1904 455097, email:sarah.thompson@defra.gsi.gov.uk

A National Statistics publication. National Statistics are produced to high professional standards. They undergo regular quality assurance reviews to ensure that they meet customer needs. They are produced free from any political interference. For general enquiries about National Statistics, contact the National Statistics Public Enquiry Service: tel. 0845 601 3034 email info@statistics.gov.uk. You can also find National Statistics on the internet at www.statistics.gov.uk.

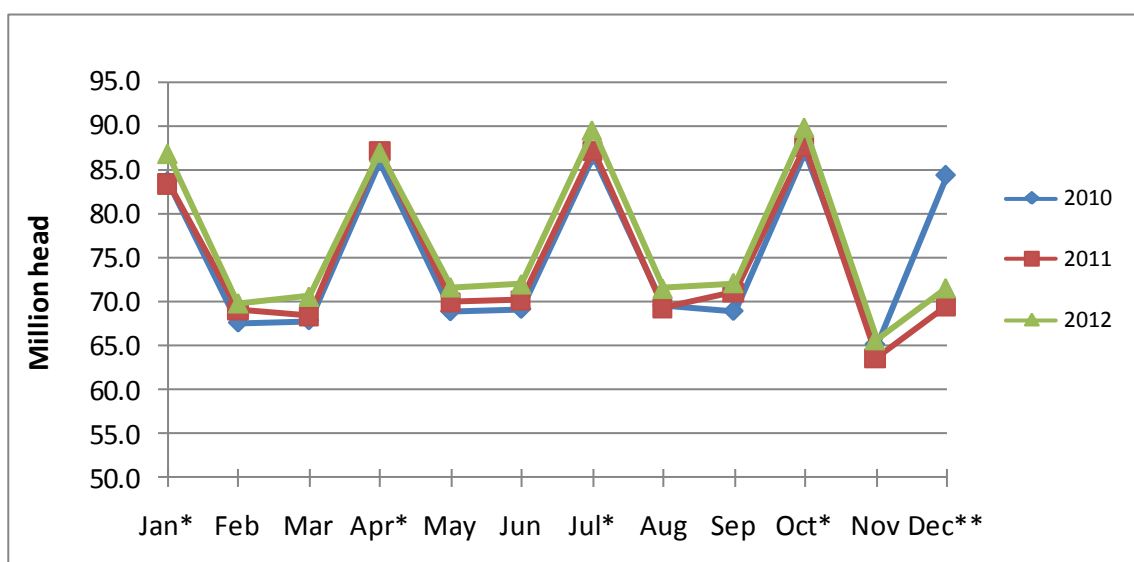
Section 1: United Kingdom Hatcheries Data – Placings And Eggs Set

The tables below show the number of chicks placed and eggs set by United Kingdom hatcheries. The number of birds placed each month shown below give an indication of future poultry meat and egg production. The number of eggs set each month indicates how many birds will be available for placing in future months. The surveys are run according to statistical, rather than calendar, months with January, April, July and October being five week periods and other months being four week periods. Please note 2010 is a 53 week statistical year, therefore December 2010 is a 5 week month (see charts). The effect of this is clearly seen in the charts. The twelve month moving totals can be used to get a clearer idea of trends.

Table 1.1: Commercial Broiler Chicks Placed in the UK from UK Hatcheries

Statistical Months	millions					
	% change			12 Month Moving Totals		
	2011	2012	11/12	2011	2012	11/12
January *	83.5	86.8	4%	903.9	899.7	0%
February	69.1	69.9	1%	905.5	900.6	-1%
March	68.4	70.7	3%	906.1	902.8	0%
April *	87.2	86.9	0%	907.4	902.5	-1%
May	69.9	71.7	3%	908.4	904.4	0%
June	70.2	72.1	3%	909.5	906.2	0%
July *	87.1	89.4	3%	910.2	908.5	0%
August	69.3	71.5	3%	909.9	910.8	0%
September	71.1	72.2	2%	912.1	911.9	0%
October *	87.6	89.8	2%	912.8	914.0	0%
November	63.6	65.8	3%	911.3	916.2	1%
December	69.4	71.6	3%	896.4	918.4	2%
Total	896.4	918.4				

Chart 1.1: Commercial Broiler Chicks Placed in the UK from UK Hatcheries



* 5 week months

** 5 week month (2010 only)

Table 1.2: Female Broiler Parent Chicks Placed in the UK from UK Hatcheries (a,b,c)

millions

Statistical Months	% change			12 Month Moving Totals		
	2011	2012	11/12	2011	2012	11/12
January *	0.6	0.7	20%	6.3	6.7	7%
February	0.5	0.6	4%	6.3	6.7	7%
March	0.4	0.4	0%	6.3	6.7	7%
April *	0.6	0.6	0%	6.3	6.7	7%
May	0.5	0.7	36%	6.4	6.9	8%
June	0.6	0.6	8%	6.3	7.0	10%
July *	0.6	0.6	3%	6.4	7.0	10%
August	0.5	0.6	24%	6.3	7.1	13%
September	0.5	0.5	-5%	6.4	7.1	10%
October *	0.7	0.7	2%	6.5	7.1	9%
November	0.6	0.5	-19%	6.6	7.0	6%
December	0.5	0.5	-6%	6.6	6.9	5%
Total	6.6	6.9				

(a) Excludes 'by-product' chicks which are included in Table 1.1

(b) Excludes grandparent chicks

(c) Includes imported female parent chicks

Table 1.3: Turkey Poults Placed in the UK from UK Hatcheries (a)

millions

Statistical Months	% change			12 Month Moving Totals		
	2011	2012	11/12	2011	2012	11/12
January *	1.3	1.3	4%	15.9	16.9	7%
February	1.0	1.2	14%	16.0	17.1	7%
March	1.0	1.1	2%	16.2	17.1	6%
April *	1.3	1.4	9%	16.4	17.2	5%
May	1.2	1.3	2%	16.6	17.2	4%
June	1.4	1.5	5%	16.7	17.3	4%
July *	2.3	2.5	10%	17.0	17.5	3%
August	2.3	2.2	-4%	17.2	17.4	1%
September	2.0	2.3	16%	17.2	17.8	3%
October *	1.2	1.3	6%	17.1	17.8	4%
November	0.8	0.8	-2%	17.1	17.8	4%
December	0.9	1.0	9%	16.9	17.9	6%
Total	16.9	17.9				

(a) Includes female breeder poults, but male breeder poults are excluded

* 5 week months

Chart 1.3: Turkey Poults Placed in the UK from UK Hatcheries

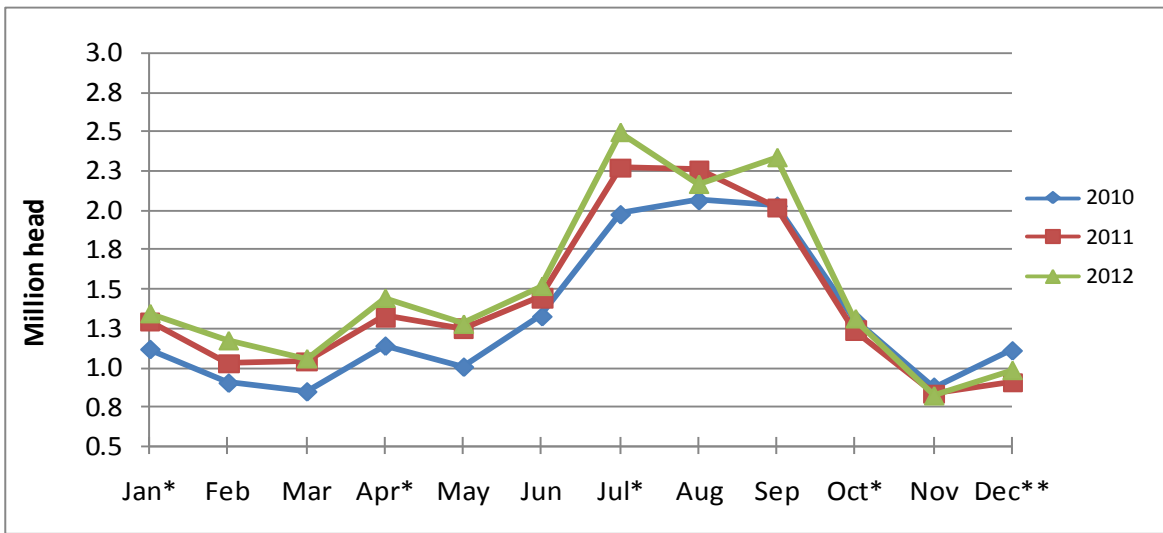
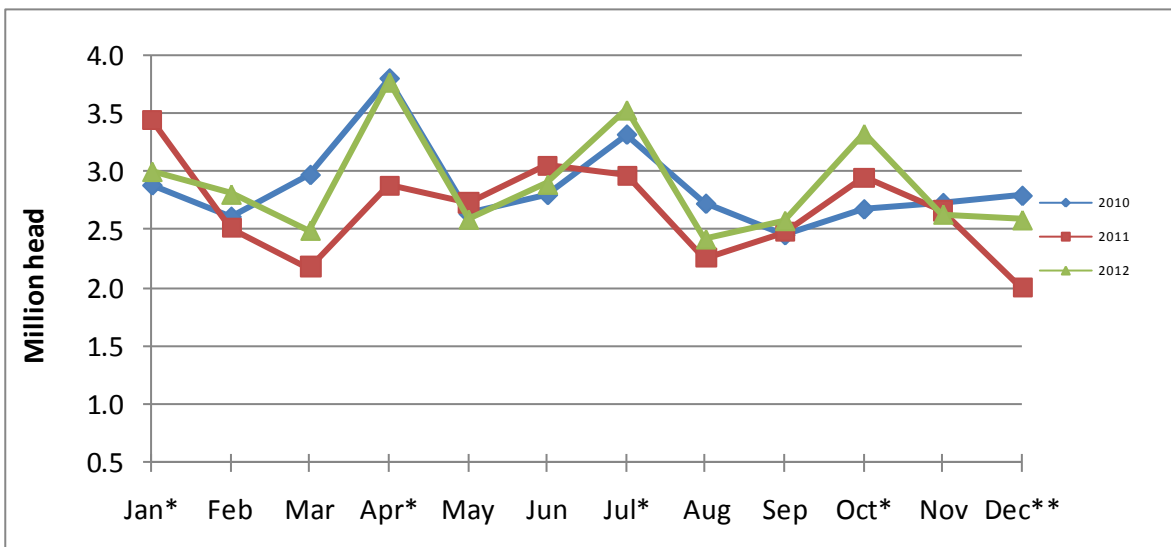


Table 1.4: Commercial Layer Chicks Placed in the UK from UK Hatcheries

Statistical Months	millions					
				12 Month Moving Totals		
	2011	2012	% change 11/12	2011	2012	% change 11/12
January *	3.5	3.0	-13%	35.1	31.7	-9%
February	2.5	2.8	12%	35.0	32.0	-8%
March	2.2	2.5	15%	34.2	32.4	-5%
April *	2.9	3.8	31%	33.2	33.3	0%
May	2.7	2.6	-5%	33.3	33.1	-1%
June	3.1	2.9	-5%	33.6	33.0	-2%
July *	3.0	3.5	19%	33.2	33.5	1%
August	2.3	2.4	7%	32.8	33.7	3%
September	2.5	2.6	4%	32.8	33.8	3%
October *	3.0	3.3	13%	33.0	34.2	3%
November	2.7	2.6	-1%	33.0	34.1	4%
December	2.0	2.6	29%	32.2	34.7	8%
Total	32.2	34.7				

Chart 1.4: Layer Chicks Placed in the UK from UK Hatcheries



* 5 week months

**5 week month (2010 only)

Table 1.5: Broiler Eggs Set by UK Hatcheries (a)

millions

Statistical Months	Commercial Broiler Eggs Set			Broiler Breeder Eggs Set		Total Broiler Eggs Set		UK 12 Month Moving Totals	
	2011	2012	% change	2011	2012	2011	2012	2011	2012
			11/12						
January *	103.7	103.9	0%	5.9	6.0	109.6	109.8	1167.0	1139.7
February	83.6	83.5	0%	4.9	4.6	88.5	88.1	1167.5	1139.2
March	84.6	84.2	0%	4.6	4.6	89.2	88.8	1168.1	1138.9
April *	105.6	105.4	0%	5.7	6.0	111.4	111.4	1170.0	1138.9
May	85.1	86.7	2%	4.7	4.8	89.8	91.5	1170.4	1140.6
June	83.6	86.5	4%	5.1	4.9	88.6	91.4	1170.6	1143.3
July *	103.0	106.8	4%	5.9	5.5	108.9	112.4	1168.0	1146.8
August	84.1	86.5	3%	4.1	4.4	88.2	90.9	1167.4	1149.5
September	84.2	87.9	4%	4.8	4.9	89.0	92.8	1167.3	1153.3
October *	96.2	99.8	4%	5.7	5.7	102.0	105.5	1161.9	1156.9
November	81.7	86.2	6%	4.8	4.5	86.5	90.8	1160.8	1161.1
December	83.0	84.7	2%	4.8	4.1	87.8	88.9	1139.5	1162.2
Total	1,078.3	1,102.2		61.1	60.0	1139.5	1162.2		

(a) Includes eggs set to produce chicks for placing outside the UK

Table 1.6: Turkey Eggs Set by UK Hatcheries (a)

millions

Statistical Months				12 Month Moving Totals		
	2011	2012	% change	2011	2012	% change
			11/12			11/12
January *	1.7	1.8	9%	23.5	24.2	3%
February	1.3	1.4	8%	23.5	24.3	4%
March	1.4	1.6	11%	23.4	24.5	4%
April *	2.1	2.2	5%	23.6	24.6	4%
May	2.4	2.5	3%	23.7	24.7	4%
June	2.7	2.8	0%	24.1	24.7	2%
July *	3.5	3.5	0%	24.2	24.7	2%
August	2.5	2.9	16%	23.8	25.1	5%
September	1.6	1.6	4%	23.9	25.1	5%
October *	1.8	1.8	0%	24.1	25.2	4%
November	1.5	1.5	0%	24.3	25.1	4%
December	1.5	1.6	6%	24.1	25.2	5%
Total	24.1	25.2				

(a) Includes only eggs set for commercial stock including those for placing outside the UK

* 5 week months

Table 1.7: Layer Eggs Set by UK Hatcheries (a)

millions

Statistical Months	% change			12 Month Moving Totals		
	2011	2012	11/12	2011	2012	11/12
January *	9.6	9.4	-2%	98.1	91.5	-7%
February	5.6	6.2	11%	95.9	92.2	-4%
March	7.1	8.7	22%	95.0	93.7	-1%
April *	8.6	9.5	10%	93.9	94.6	1%
May	9.2	8.4	-9%	95.5	93.8	-2%
June	7.5	8.2	9%	94.5	94.5	0%
July *	7.7	9.2	20%	93.3	96.0	3%
August	6.4	8.1	26%	93.3	97.7	5%
September	7.7	8.3	9%	94.6	98.3	4%
October *	9.6	9.0	-6%	94.2	97.8	4%
November	6.9	8.2	19%	94.2	99.1	5%
December	5.8	5.9	1%	91.7	99.1	8%
Total	91.7	99.1				

(a) Includes only eggs set for commercial stock including those for placing outside the UK

* 5 week months

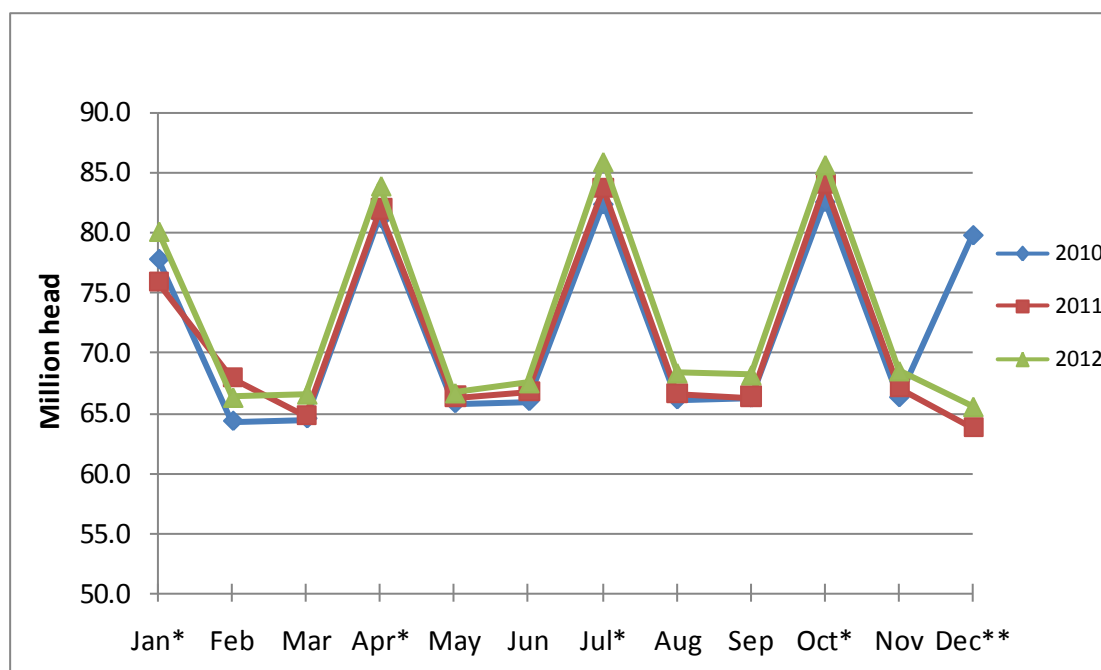
Section 2: UK Poultry Slaughterings - Numbers Slaughtered, Average Weights and Poultry Meat Production

The tables below show the estimated number of poultry slaughtered, average live weights of poultry and poultry meat production in the United Kingdom.

Table 2.1: UK Slaughter of Broiler Chickens

Statistical Months	Million head					
	% change			12 Month Moving Totals		
	2011	2012	11/12	2011	2012	11/12
January *	75.8	80.1	6%	860.6	859.1	0%
February	67.9	66.3	-2%	864.2	857.5	-1%
March	64.8	66.5	3%	864.5	859.3	-1%
April *	81.9	83.9	2%	865.2	861.3	0%
May	66.3	66.7	0%	865.8	861.6	0%
June	66.7	67.5	1%	866.6	862.4	0%
July *	83.6	85.9	3%	867.9	864.7	0%
August	66.6	68.3	3%	868.5	866.4	0%
September	66.3	68.1	3%	868.6	868.2	0%
October *	84.0	85.7	2%	870.0	869.9	0%
November	67.1	68.5	2%	870.8	871.3	0%
December	63.8	65.5	3%	854.9	873.0	2%
Total	854.9	873.0				

Chart 2.1: UK Slaughter of Broiler Chickens



* 5 week months

**5 week month (2010 only)

Table 2.2: UK Slaughter of Boiling Fowl (a)

Million head

Statistical Months	% change			12 Month Moving Totals		
	2011	2012	11/12	2011	2012	11/12
January *	3.6	4.2	17%	41.3	44.6	8%
February	3.7	3.6	-1%	42.1	44.6	6%
March	3.4	3.5	5%	42.3	44.7	6%
April *	4.0	4.6	14%	42.7	45.3	6%
May	2.4	2.8	16%	42.7	45.7	7%
June	3.3	3.6	11%	42.6	46.0	8%
July *	4.4	4.2	-5%	43.2	45.8	6%
August	3.9	3.5	-12%	43.7	45.3	4%
September	4.0	3.7	-9%	44.4	45.0	1%
October *	4.3	4.5	3%	44.5	45.1	1%
November	3.4	3.6	5%	44.3	45.3	2%
December	3.6	3.8	7%	44.0	45.5	4%
Total	44.0	45.5				

(a) Includes Spent commercial layer hens, spent layer breeders and spent broiler breeder hens

Table 2.3: UK Slaughter of Turkeys

Million head

Statistical Months	% change			12 Month Moving Totals		
	2011	2012	2011/2012	2011	2012	11/12
January *	1.6	2.0	25%	15.5	17.3	11%
February	1.3	1.3	7%	15.6	17.4	11%
March	0.9	1.0	3%	15.6	17.4	11%
April *	1.3	1.2	-2%	15.8	17.4	10%
May	1.0	1.1	6%	16.0	17.5	9%
June	1.0	1.1	10%	16.1	17.6	9%
July *	1.3	1.4	12%	16.3	17.7	9%
August	1.0	1.3	27%	16.4	18.0	9%
September	1.3	1.5	18%	16.6	18.2	10%
October *	2.2	2.4	8%	16.9	18.4	9%
November	1.9	2.0	6%	17.1	18.5	8%
December	2.1	2.1	0%	16.9	18.5	10%
Total	16.9	18.5				

* 5 week months

Table 2.4: Average Liveweights per Bird at Point of Slaughter in England & Wales (a)

Statistical Months	kilograms					
	Broilers		Boiling Fowls		Turkeys	
	2011	2012	2011	2012	2011	2012
January *	2.25	2.20	2.04	2.01	12.07	15.58
February	2.18	2.18	2.06	2.10	11.58	14.32
March	2.18	2.22	2.10	2.21	12.09	12.59
April *	2.16	2.21	2.03	2.21	12.68	12.41
May	2.16	2.20	2.06	2.13	13.30	12.45
June	2.14	2.15	2.17	2.05	13.19	12.97
July *	2.16	2.18	2.10	2.04	12.89	12.64
August	2.16	2.17	2.05	2.20	12.90	13.08
September	2.19	2.20	2.08	2.15	14.06	13.08
October *	2.19	2.19	2.12	2.10	14.99	14.55
November	2.19	2.18	1.97	2.06	9.81	10.57
December	2.22	2.20	2.02	2.09	9.29	9.19

(a) more detailed information is available from the accompanying dataset which can be downloaded at: <http://www.defra.gov.uk/statistics/foodfarm/food/poultry/>

Table 2.5: UK Poultrymeat Production (a,b)

Period		thousand tonnes carcass weight						
		Broilers	Boiling Fowl	Turkeys	Ducks	Total	% change since last year	UK 12 Month Moving Totals
2011	December (c)	99.4	4.1	17.0	2.7	123.3	-16%	1,557.5
	Total	1,297.3	56.1	171.1	33.0	1,557.5	-1%	
2012	January *	121.1	5.5	26.6	3.0	156.2	11%	1,572.5
	February	99.8	4.9	16.0	2.5	123.3	0%	1,572.5
	March	101.7	4.9	9.8	2.5	119.0	3%	1,576.2
	April *	129.0	6.3	12.9	3.2	151.4	4%	1,582.6
	May	101.1	3.7	11.5	2.4	118.8	2%	1,584.5
	June	100.9	4.7	12.3	2.4	120.3	2%	1,586.6
	July *	129.4	5.2	15.0	2.9	152.6	3%	1,591.6
	August	101.8	4.6	14.1	2.4	122.9	4%	1,596.0
	September	103.0	4.8	16.0	2.3	126.2	2%	1,598.9
	October *	129.3	5.2	29.6	3.0	167.1	2%	1,602.6
	November	103.0	4.1	15.9	2.6	125.6	3%	1,606.6
	December	100.1	4.5	17.3	2.7	124.6	1%	1,607.9
	Total	1,320.4	58.6	197.0	32.0	1,607.9	3%	

(a) Converted to whole bird equivalent carcass weight net of offal

(b) Excludes other poultry types, e.g. geese

(c) Please note, when comparing data that December 2010 was a five week month (2010 was a 53 week statistical year)

* 5 week months

Methodology Notes and Revisions policy:

1. The information in this notice is used by the UK government and the EU as evidence for assessing market conditions and evaluating agricultural policy. The hatchery statistics are also required by the EU under Regulation (EC) No 617/2008 and 1234/2007. Other users include the food and farming industry, academia and the general public. Contact details are available on the front page of this notice, for you to send feedback or ask questions about the information provided
2. Defra runs a monthly survey of registered England and Wales hatcheries. It is a statutory survey of 42 respondents that collects information on the number of eggs set and the chicks placed by hatcheries. The response rate is typically 100%. Similar surveys are run by the Rural & Environment Research and Analysis Directorate (RERAD) for Scotland and the Department of Agriculture and Rural Development (DARD) for Northern Ireland.
3. Poultry slaughterings and poultry meat production statistics are estimated from the number of chicks placed by hatcheries and day old chick imports using industry advice on life-spans and mortality. Average liveweights for each type of poultry are obtained from Defra's monthly survey of England and Wales poultry slaughterhouses. This is a sample survey of large poultry slaughterhouses, around 26 respondents. Similar surveys are run in Scotland and Northern Ireland. Meat production is calculated from the estimated number of birds slaughtered and the average liveweights. The liveweight is converted to carcass weight using industry advice on conversions factors.
4. Survey data are subject to a variety of validation checks which identify inconsistencies in the data. All data are cleaned prior to publication in discussion with the survey respondents.
5. The percentage changes shown are calculated using unrounded figures. Any percentage changes calculated using the published (rounded) figures may differ slightly from the changes shown. The UK 12 month moving totals represent the sum of the 12 months up to and including the date indicated and can be seen as a trend measure that is not affected by seasonality.

Revisions

6. Figures in this notice are provisional and subject to revision. We will provide information about any revisions we make to previously published information in this statistics notice and the associated datasets. Revisions could occur for various reasons, including:
 - a. if we have not received survey data from respondents we make an estimate based on their previous returns. These estimates are replaced with actual survey data when it is received.
 - b. survey respondents occasionally supply amended figures for previous periods.
 - c. we may also revise the methodology used to raise the survey data to give UK totals.

This month minor revisions have been made to the hatchery data from September 2012, slaughter from October 2012 and production data from December 2011.