



UK SLAUGHTER STATISTICS

The latest National Statistics produced by Defra on UK slaughterings of cattle, sheep and pigs were released on 17 January 2013 according to the arrangements approved by the UK Statistics Authority.

This monthly notice will be updated at 09:30 on 21 February 2013.

Contents

Section 1	UK slaughter numbers	page 2
Section 2	UK average dressed carcase weights	page 2
Section 3	UK home-killed meat production	page 3
Section 4	UK average weekly slaughter estimates	page 3 to 4
Section 5	UK slaughterings by country	page 5
Section 6	Methodology, notes and revisions policy	page 6

Key points

This release shows the latest monthly information on the slaughtering of cattle, sheep and pigs. It also includes dressed carcase weight and meat production information. The key results for **December 2012** are given below:

- **Cattle:** UK prime cattle slaughterings were 2.3 per cent lower than in December 2011 at 140 thousand head. Beef and veal production was 63 thousand tonnes, 1.6 per cent lower than in December 2011.
- **Sheep:** UK clean sheep slaughterings were 5.1 per cent higher than in December 2011 at 1058 thousand head. Mutton and lamb production was 23 thousand tonnes, 2.2 per cent higher than in December 2011.
- **Pigs:** UK clean pig slaughterings were 3.6 per cent higher than in December 2011 at 769 thousand head. Pigmeat production was 62 thousand tonnes, 3.0 per cent higher than in December 2011.

This notice and additional tables providing longer term trends of slaughterings, meat production and supplies are available to download at: <http://www.defra.gov.uk/statistics/foodfarm/food/slaughter/>

Enquiries to: Sarah Thompson, Department for Environment, Food and Rural Affairs, Room 301, Foss House, Kings Pool, 1 - 2 Peasholme Green, York YO1 7PX. Tel: ++ 44 (0)1904 455097, email:sarah.thompson@defra.gsi.gov.uk

A National Statistics publication. National Statistics are produced to high professional standards. They undergo regular quality assurance reviews to ensure that they meet customer needs. They are produced free from any political interference. For general enquiries about National Statistics, contact the National Statistics Public Enquiry Service: tel. 0845 601 3034 email info@statistics.gov.uk. You can also find National Statistics on the internet at www.statistics.gov.uk.

Section 1: UK monthly slaughter estimates

This table shows monthly estimates of the number of cattle, sheep and pigs slaughtered for meat for human consumption in the United Kingdom. The survey is run according to statistical, rather than calendar months, the number of weeks in the statistical month is specified below.

Table 1: UK monthly slaughter estimates Thousand Head

United Kingdom	October 2012 5 weeks	November 2012 4 weeks	December 2012 4 weeks
Steers	100	78	68
Heifers	71	60	54
Young Bulls	27	22	18
Cows and Adult Bulls	78	65	49
Calves	10	8	6
Other Sheep and Lambs	1467	1084	1058
Ewes and Rams	217	157	157
Clean Pigs	1005	830	769
Sows and Boars	27	21	17

Section 2: UK average dressed carcass weights

This table shows the monthly average dressed carcass weight of livestock slaughtered for meat for human consumption in the United Kingdom.

Table 2: UK average dressed carcass weights Kilogramme

United Kingdom	October 2012	November 2012	December 2012
Steers	360.6	358.7	361.3
Heifers	313.8	312.7	315.1
Young Bulls	345.4	342.3	344.4
Cows and Adult Bulls	300.9	301.8	305.1
Calves	46.8	43.9	49.3
Other Sheep and Lambs	18.5	18.7	18.2
Ewes and Rams	26.6	24.6	25.6
Clean Pigs	78.8	78.6	77.7
Sows and Boars	149.2	149.1	155.1

Section 3: UK monthly home-killed production of meat

This table shows the monthly volumes of meat produced in the United Kingdom. Data is shown according to statistical, rather than calendar months, number of weeks in statistical month as specified.

Table 3: UK monthly home-killed production of meat

Thousand Tonnes

United Kingdom	October 2012 5 weeks	November 2012 4 weeks	December 2012 4 weeks
Beef	92	74	63
Mutton and Lamb	33	24	23
Pigmeat	83	68	62

Section 4: UK average weekly slaughterings

This following table shows the average weekly slaughter figures for the last thirteen months. The monthly slaughter figures in section one are affected by the number of weeks in the statistical month. To get a clearer measure of trends weekly averages are calculated by dividing the number of livestock slaughtered each month by the number of weeks in the statistical month.

Longer term trends can be seen in the charts following this table.

Table 4: UK average weekly slaughterings

Thousand Head

United Kingdom	2011 2012												
	Dec	Jan	Feb	Mar	Apr	May	Jun	Jul	Aug	Sep	Oct	Nov	Dec
Steers	17	18	19	20	20	19	17	17	17	19	20	19	17
Heifers	14	15	16	15	14	14	12	12	12	13	14	15	14
Young Bulls	4	4	5	5	5	6	7	7	6	6	5	5	4
Cows and Adult Bulls	11	12	11	10	10	11	11	12	12	14	16	16	12
Calves	1	1	2	2	1	1	1	1	1	2	2	2	2
Other Sheep and Lambs	252	195	196	204	189	191	196	230	262	260	293	271	265
Ewes and Rams	39	34	35	33	31	31	31	35	38	37	43	39	39
Clean Pigs	186	188	192	193	187	189	185	192	195	197	201	207	192
Sows and Boars	*	5	5	5	5	5	5	5	5	6	5	5	4

* Data are confidential

Chart 4:1 United Kingdom average weekly slaughtering – Cattle

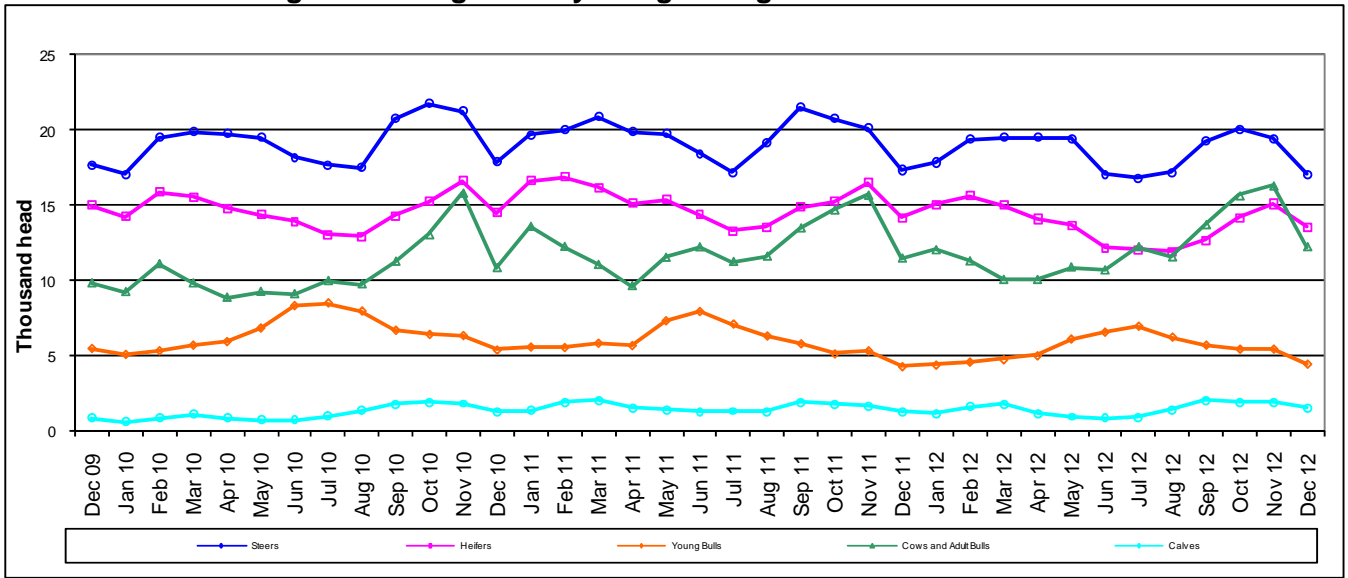


Chart 4:2 United Kingdom average weekly slaughtering – Sheep

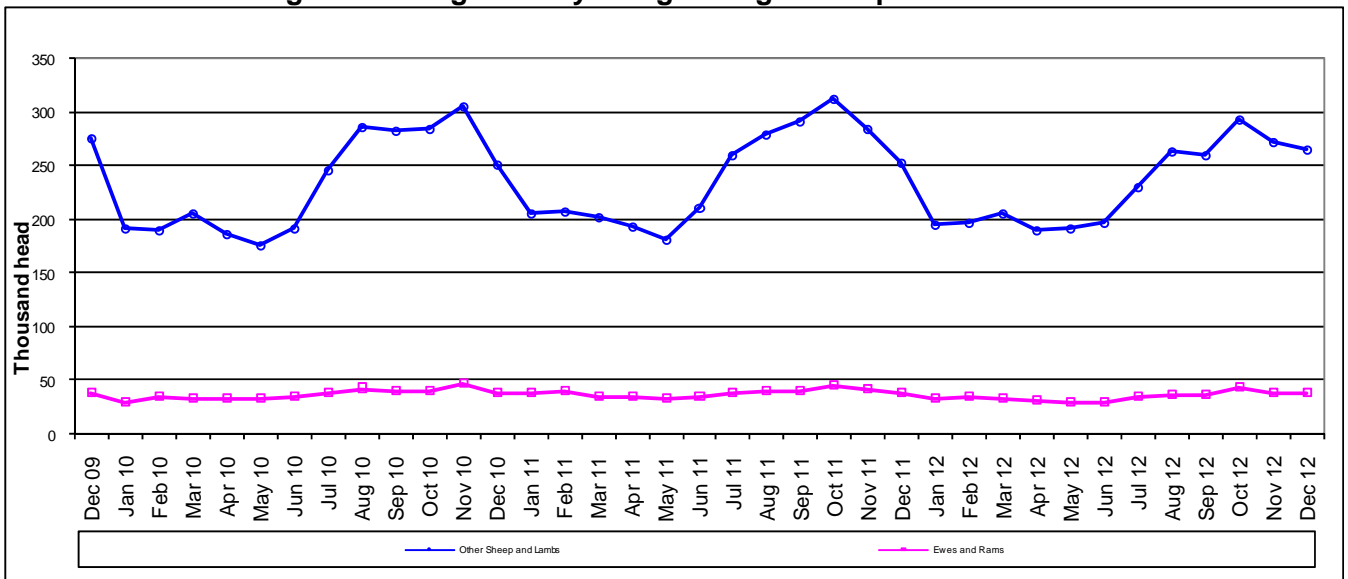
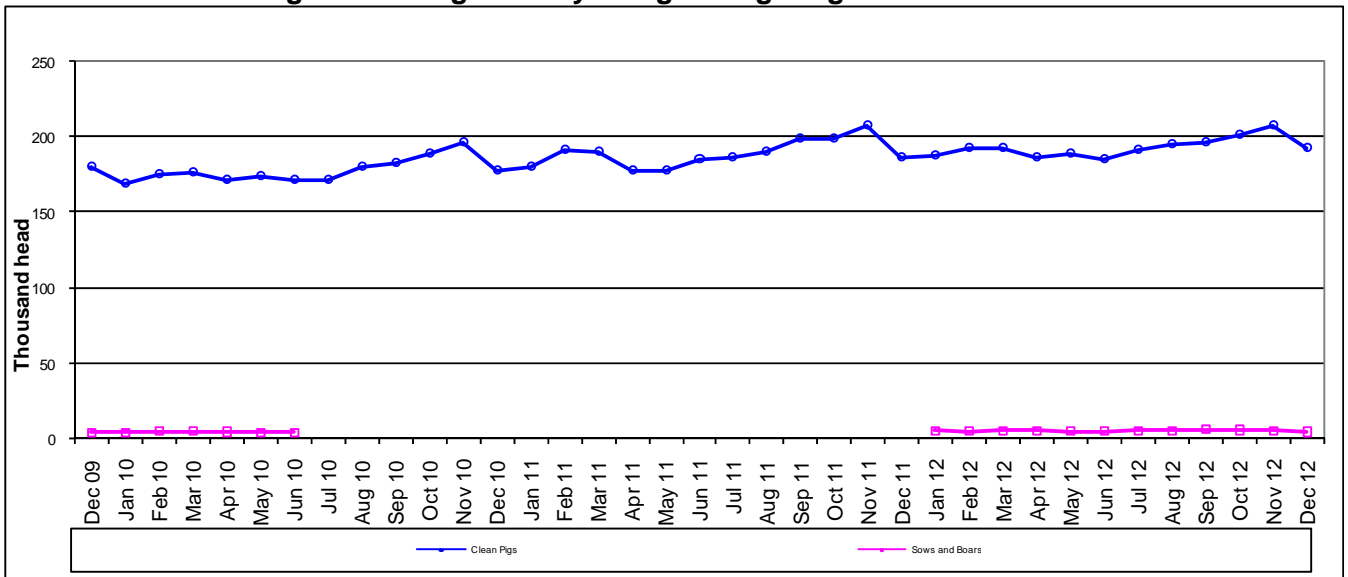


Chart 4:3 United Kingdom average weekly slaughtering - Pigs



Section 5: UK slaughterings by country

This table shows monthly estimates of the number of cattle, sheep and pigs slaughtered for meat in England and Wales, Scotland, Great Britain and Northern Ireland. Data are shown in statistical months, rather than calendar months. The totals for the countries may not add up to the Great Britain totals or the United Kingdom totals in section one, due to rounding.

Table 5: UK slaughterings by country

Thousand Head

	October 2012 5 weeks	November 2012 4 weeks	December 2012 4 weeks
England & Wales			
Steers	60	48	40
Heifers	43	36	31
Young Bulls	19	15	12
Cows and Adult Bulls	56	48	35
Calves	9	7	6
Other Sheep and Lambs	1271	924	927
Ewes and Rams	210	151	152
Clean Pigs	793	670	628
Sows and Boars	27	21	17
Scotland			
Steers	21	16	15
Heifers	17	14	13
Young Bulls	3	2	2
Cows and Adult Bulls	7	6	5
Calves	0	0	0
Other Sheep and Lambs	142	119	99
Ewes and Rams	3	2	2
Clean Pigs	50	27	27
Sows and Boars	0	0	0
Great Britain			
Steers	81	64	56
Heifers	60	50	44
Young Bulls	22	17	14
Cows and Adult Bulls	64	54	40
Calves	9	7	6
Other Sheep and Lambs	1414	1043	1027
Ewes and Rams	213	153	154
Clean Pigs	843	697	655
Sows and Boars	27	21	17
Northern Ireland			
Steers	19	13	12
Heifers	11	10	10
Young Bulls	5	4	4
Cows and Adult Bulls	14	11	9
Calves	1	1	0
Other Sheep and Lambs	53	41	32
Ewes and Rams	4	3	3
Clean Pigs	162	133	115
Sows and Boars	0	0	0

Section 6: Methodology, Notes and Revisions Policy

1. The information in this notice is used by the UK government and the EU as evidence for assessing market conditions and evaluating agricultural policy. The slaughter statistics are also required by the EU under Regulation (EC) No 1165/2008. Other users include the food and farming industry, academia and the general public. Contact details are available on the front page of this notice, for you to send feedback or ask questions about the information provided.
2. Defra runs a monthly survey of registered England and Wales slaughterhouses. It is a statutory survey of 109 respondents that collects information on livestock slaughter numbers and weight of meat produced. All major slaughterhouses participate in the survey and the response rate is typically 100%. These data are supplemented by administrative data for smaller slaughterhouses. Similar surveys are run by RERAD in Scotland and by DARD in Northern Ireland. The England and Wales slaughter survey accounts for around 90% of the E&W slaughterhouse throughput for each livestock type.
3. Information on the weight of meat produced from a sample of animals weighed at slaughterhouses is obtained from survey respondents, around 55 slaughterhouse respondents. From the information provided average dressed carcass weights for each animal type are primarily calculated by adding up the total weight of the meat produced and dividing by the number of animals weighed. Cold dressed carcass weights are recorded.
4. The volume of meat production is estimated from the number of all livestock slaughtered and average dressed carcass weight information collected. Home killed production includes livestock imported into the United Kingdom for slaughter.
5. The data are subject to a variety of validation checks which identify inconsistencies in the data. All data are cleaned prior to publication in discussion with the survey respondents.

Revisions Policy

6. Figures in this notice are provisional and subject to revision. We will provide information about any revisions we make to previously published information in this statistics notice and the associated datasets. Revisions could occur for various reasons, including:
 - a. if we have not received survey data from respondents we make an estimate based on their previous returns. These estimates will be replaced with actual survey data when it is received.
 - b. survey respondents occasionally supply amended figures for previous periods.
 - c. if we have not received administrative data for the smaller slaughterhouses we make an estimate based on previous data received. These estimates will be replaced with actual data when it is received.
7. **This month revisions have been made to the data from August 2012 onwards.**