



UK SLAUGHTER STATISTICS

The latest National Statistics produced by Defra on UK slaughterings of cattle, sheep and pigs were released on 20 June 2013 according to the arrangements approved by the UK Statistics Authority.

This monthly notice will be updated at 09:30 on 18 July 2013.

Contents

Section 1	UK slaughter numbers	page 2
Section 2	UK average dressed carcase weights	page 2
Section 3	UK home-killed meat production	page 3
Section 4	UK average weekly slaughter estimates	page 3 to 4
Section 5	UK slaughterings by country	page 5
Section 6	Methodology, notes and revisions policy	page 6

Key points

This release shows the latest monthly information on the slaughtering of cattle, sheep and pigs. It also includes dressed carcase weight and meat production information. The key results for **May 2013** are given below:

- **Cattle:** UK prime cattle slaughterings were 1.9 per cent lower than in May 2012 at 154 thousand head. Beef and veal production was 66 thousand tonnes, 4.8 per cent lower than in May 2012.
- **Sheep:** UK clean sheep slaughterings were 5.5 per cent lower than in May 2012 at 722 thousand head. Mutton and lamb production was 18 thousand tonnes, 4.5 per cent lower than in May 2012.
- **Pigs:** UK clean pig slaughterings were 2.0 per cent lower than in May 2012 at 740 thousand head. Pigmeat production was 61 thousand tonnes, 1.6 per cent lower than in May 2012.

This notice and additional tables providing longer term trends of slaughterings, meat production and supplies are available to download at: <https://www.gov.uk/government/publications/cattle-sheep-and-pig-slaughter>

Enquiries to: Sarah Thompson, Department for Environment, Food and Rural Affairs, Room 301, Foss House, Kings Pool, 1 - 2 Peasholme Green, York YO1 7PX. Tel: ++ 44 (0)1904 455097, email:sarah.thompson@defra.gsi.gov.uk

A National Statistics publication. National Statistics are produced to high professional standards. They undergo regular quality assurance reviews to ensure that they meet customer needs. They are produced free from any political interference. For general enquiries about National Statistics, contact the National Statistics Public Enquiry Service: tel. 0845 601 3034 email info@statistics.gov.uk. You can also find National Statistics on the internet at www.statistics.gov.uk.

Section 1: UK monthly slaughter estimates

This table shows monthly estimates of the number of cattle, sheep and pigs slaughtered for meat for human consumption in the United Kingdom. The survey is run according to statistical, rather than calendar months, the number of weeks in the statistical month is specified below.

Table 1: UK monthly slaughter estimates Thousand Head

United Kingdom	March 2013 4 weeks	April 2013 5 weeks	May 2013 4 weeks
Steers	72	94	74
Heifers	56	71	55
Young Bulls	19	27	24
Cows and Adult Bulls	42	55	42
Calves	10	8	5
Other Sheep and Lambs	896	1001	722
Ewes and Rams	150	177	144
Clean Pigs	767	945	740
Sows and Boars	21	25	19

Section 2: UK average dressed carcass weights

This table shows the monthly average dressed carcass weight of livestock slaughtered for meat for human consumption in the United Kingdom.

Table 2: UK average dressed carcass weights Kilogramme

United Kingdom	March 2013	April 2013	May 2013
Steers	366.6	366.4	363.1
Heifers	317.4	316.2	315.5
Young Bulls	332.2	337.7	337.3
Cows and Adult Bulls	306.1	305.5	306.6
Calves	34.1	46.1	53.6
Other Sheep and Lambs	19.1	19.3	19.2
Ewes and Rams	25.6	25.4	26.7
Clean Pigs	79.2	79.0	78.4
Sows and Boars	140.2	143.0	143.7

Section 3: UK monthly home-killed production of meat

This table shows the monthly volumes of meat produced in the United Kingdom. Data is shown according to statistical, rather than calendar months, number of weeks in statistical month as specified.

Table 3: UK monthly home-killed production of meat

Thousand Tonnes

United Kingdom	March 2013 4 weeks	April 2013 5 weeks	May 2013 4 weeks
Beef	64	83	66
Mutton and Lamb	21	24	18
Pigmeat	64	78	61

Section 4: UK average weekly slaughterings

This following table shows the average weekly slaughter figures for the last thirteen months. The monthly slaughter figures in section one are affected by the number of weeks in the statistical month. To get a clearer measure of trends weekly averages are calculated by dividing the number of livestock slaughtered each month by the number of weeks in the statistical month.

Longer term trends can be seen in the charts following this table.

Table 4: UK average weekly slaughterings

Thousand Head

United Kingdom	2012							2013					
	May	Jun	Jul	Aug	Sep	Oct	Nov	Dec	Jan	Feb	Mar	Apr	May
Steers	19	17	17	17	19	20	20	17	17	19	18	19	19
Heifers	14	12	12	12	13	14	15	14	14	15	14	14	14
Young Bulls	6	7	7	6	6	5	5	4	4	5	5	5	6
Cows and Adult Bulls	11	11	12	12	14	16	17	12	13	12	10	11	11
Calves	1	1	1	1	2	2	2	2	2	2	2	2	1
Other Sheep and Lambs	191	196	230	262	260	293	268	263	220	224	224	200	181
Ewes and Rams	31	31	35	38	37	44	38	39	38	40	37	35	36
Clean Pigs	189	185	192	195	197	201	208	192	189	197	192	189	185
Sows and Boars	5	5	5	5	6	5	5	4	5	5	5	5	5

Chart 4:1 United Kingdom average weekly slaughtering – Cattle

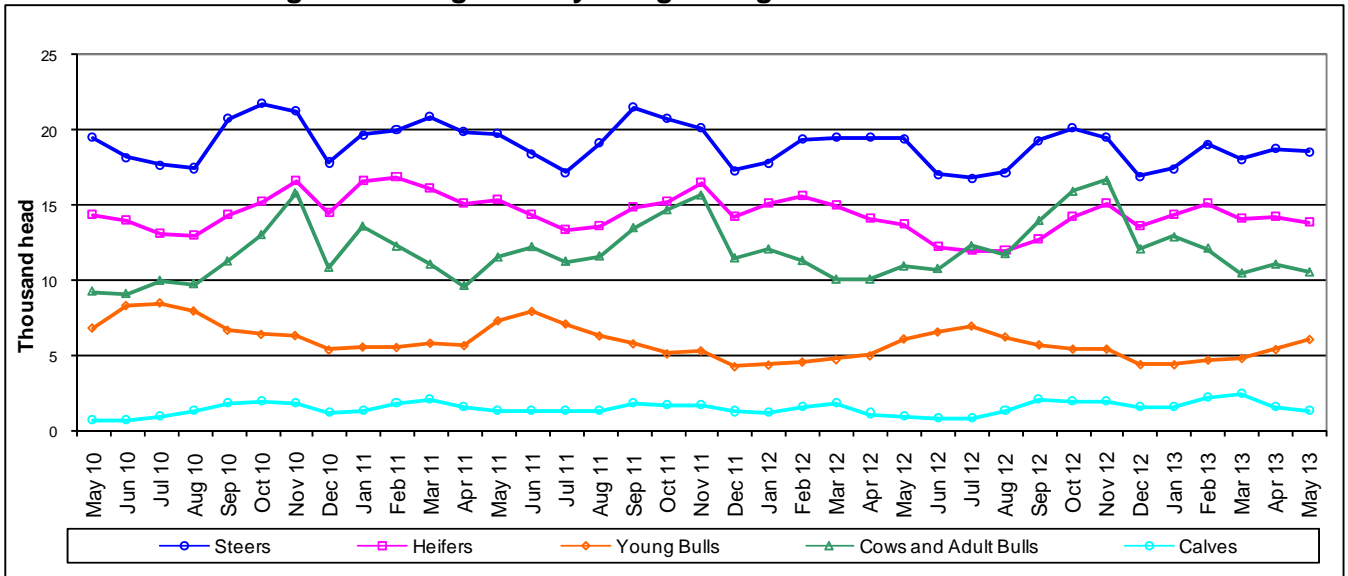


Chart 4:2 United Kingdom average weekly slaughtering – Sheep

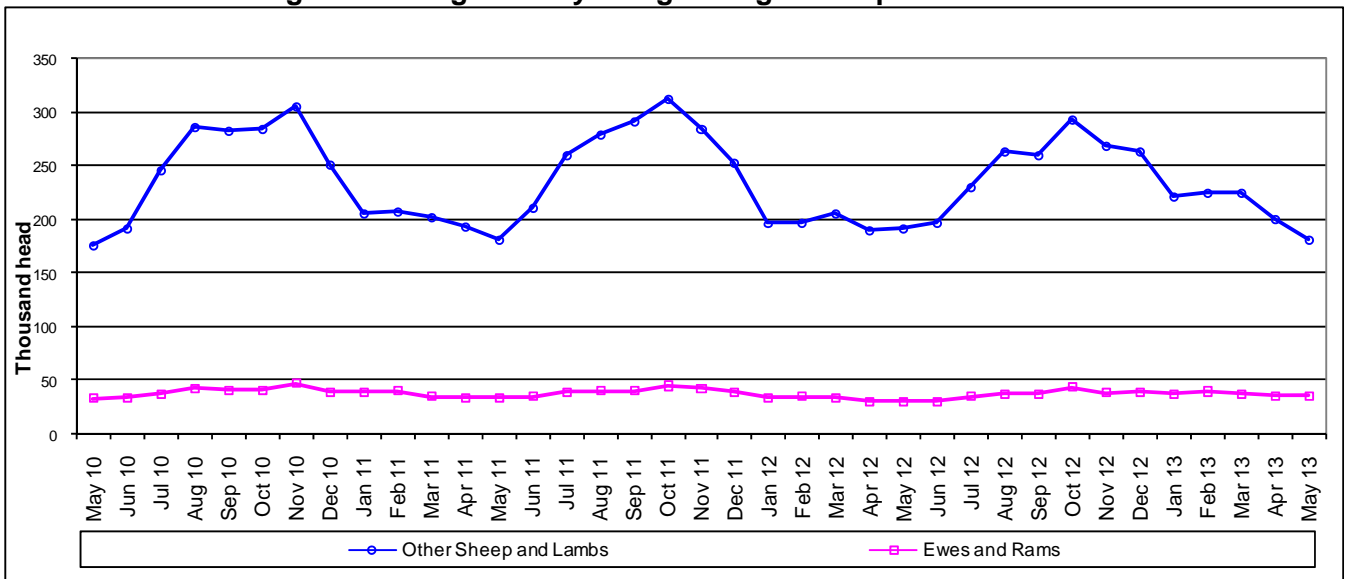
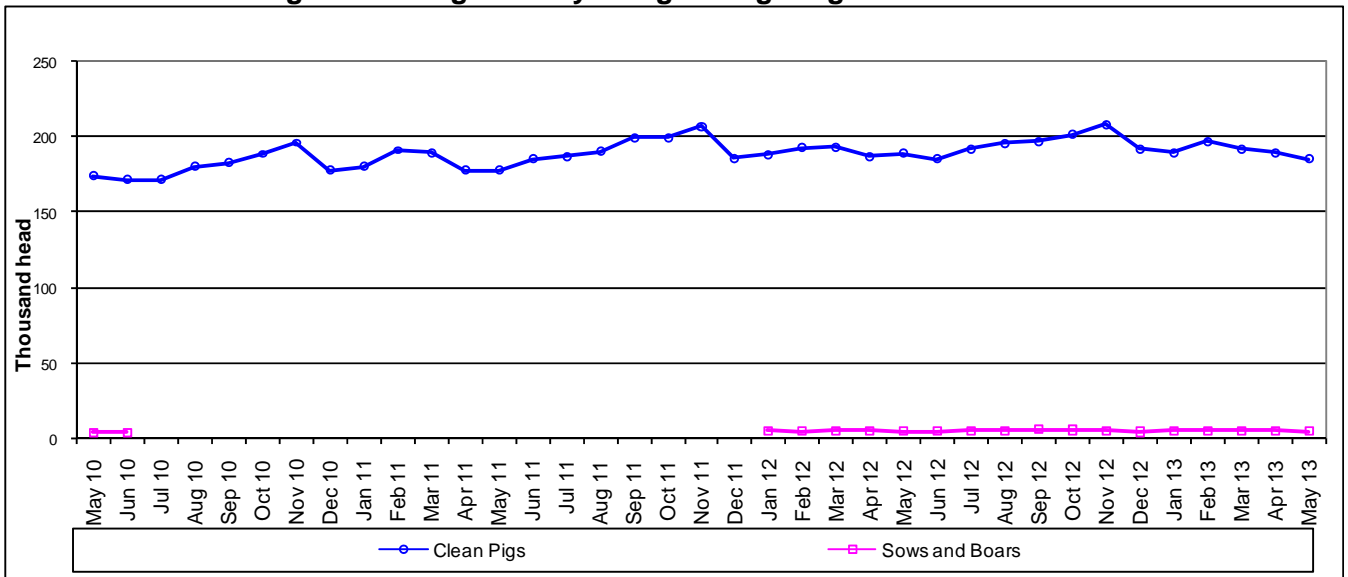


Chart 4:3 United Kingdom average weekly slaughtering - Pigs



Section 5: UK slaughterings by country

This table shows monthly estimates of the number of cattle, sheep and pigs slaughtered for meat in England and Wales, Scotland, Great Britain and Northern Ireland. Data are shown in statistical months, rather than calendar months. The totals for the countries may not add up to the Great Britain totals or the United Kingdom totals in section one, due to rounding.

Table 5: UK slaughterings by country

Thousand Head

	March 2013 4 weeks	April 2013 5 weeks	May 2013 4 weeks
England & Wales			
Steers	45	57	44
Heifers	33	42	33
Young Bulls	13	17	16
Cows and Adult Bulls	31	41	30
Calves	9	8	5
Other Sheep and Lambs	761	843	659
Ewes and Rams	146	171	140
Clean Pigs	622	764	598
Sows and Boars	20	24	19
Scotland			
Steers	17	22	19
Heifers	14	16	13
Young Bulls	2	3	3
Cows and Adult Bulls	4	5	4
Calves	0	0	0
Other Sheep and Lambs	121	137	42
Ewes and Rams	2	2	1
Clean Pigs	25	30	30
Sows and Boars	0	0	0
Great Britain			
Steers	62	79	63
Heifers	47	58	45
Young Bulls	15	20	19
Cows and Adult Bulls	36	47	35
Calves	9	8	5
Other Sheep and Lambs	881	980	701
Ewes and Rams	147	173	141
Clean Pigs	648	794	627
Sows and Boars	21	25	19
Northern Ireland			
Steers	10	15	12
Heifers	9	13	10
Young Bulls	5	7	5
Cows and Adult Bulls	6	8	8
Calves	0	1	0
Other Sheep and Lambs	14	21	21
Ewes and Rams	3	4	3
Clean Pigs	120	152	112
Sows and Boars	0	0	0

Section 6: Methodology, Notes and Revisions Policy

1. The information in this notice is used by the UK government and the EU as evidence for assessing market conditions and evaluating agricultural policy. The slaughter statistics are also required by the EU under Regulation (EC) No 1165/2008. Other users include the food and farming industry, academia and the general public. Contact details are available on the front page of this notice, for you to send feedback or ask questions about the information provided.
2. Defra runs a monthly survey of registered England and Wales slaughterhouses. It is a statutory survey of 106 respondents that collects information on livestock slaughter numbers and weight of meat produced. All major slaughterhouses participate in the survey and the response rate is typically 100%. These data are supplemented by administrative data for smaller slaughterhouses. Similar surveys are run by RERAD in Scotland and by DARD in Northern Ireland. The England and Wales slaughter survey accounts for around 90% of the E&W slaughterhouse throughput for each livestock type.
3. Information on the weight of meat produced from a sample of animals weighed at slaughterhouses is obtained from survey respondents, around 55 slaughterhouse respondents. From the information provided average dressed carcass weights for each animal type are primarily calculated by adding up the total weight of the meat produced and dividing by the number of animals weighed. Cold dressed carcass weights are recorded.
4. The volume of meat production is estimated from the number of all livestock slaughtered and average dressed carcass weight information collected. Home killed production includes livestock imported into the United Kingdom for slaughter.
5. The data are subject to a variety of validation checks which identify inconsistencies in the data. All data are cleaned prior to publication in discussion with the survey respondents.

Revisions Policy

6. Figures in this notice are provisional and subject to revision. We will provide information about any revisions we make to previously published information in this statistics notice and the associated datasets. Revisions could occur for various reasons, including:
 - a. if we have not received survey data from respondents we make an estimate based on their previous returns. These estimates will be replaced with actual survey data when it is received.
 - b. survey respondents occasionally supply amended figures for previous periods.
 - c. if we have not received administrative data for the smaller slaughterhouses we make an estimate based on previous data received. These estimates will be replaced with actual data when it is received.
7. **This month revisions have been made to the data from April 2013 onwards.**