

## UK SLAUGHTER STATISTICS

The latest National Statistics produced by Defra on UK slaughterings of cattle, sheep and pigs were released on 19 April 2012 according to the arrangements approved by the UK Statistics Authority.

This monthly notice will be updated at 09:30 on 24 May 2012.

### Contents

Section 1	UK slaughter numbers	page 2
Section 2	UK average dressed carcass weights	page 2
Section 3	UK home-killed meat production	page 3
Section 4	UK average weekly slaughter estimates	page 3 to 4
Section 5	UK slaughterings by country	page 5
Section 6	Methodology, notes and revisions policy	page 6

### Key points

This release shows the latest monthly information on the slaughtering of cattle, sheep and pigs. It also includes dressed carcass weight and meat production information. The key results for **March 2012** are given below:

- **Cattle:** UK prime cattle slaughterings were 8 per cent lower than in March 2011 at 157 thousand head. Beef and veal production was 68 thousand tonnes, 8 per cent lower than in March 2011.
- **Sheep:** UK clean sheep slaughterings were 2 per cent higher than in March 2011 at 820 thousand head. Mutton and lamb production was 20 thousand tonnes, 3 per cent higher than in March 2011.
- **Pigs:** UK clean pig slaughterings were 2 per cent higher than in March 2011 at 771 thousand head. Pigmear production was 64 thousand tonnes, 2 per cent higher than in March 2011.

This notice and additional tables providing longer term trends of slaughterings, meat production and supplies are available to download at: <http://www.defra.gov.uk/statistics/foodfarm/food/slaughter/>

---

**Enquiries to:** Sarah Thompson, Department for Environment, Food and Rural Affairs, Room 309, Foss House, Kings Pool, 1 - 2 Peasholme Green, York YO1 7PX. Tel: ++ 44 (0)1904 455097, email:sarah.thompson@defra.gsi.gov.uk

**A National Statistics publication.** National Statistics are produced to high professional standards. They undergo regular quality assurance reviews to ensure that they meet customer needs. They are produced free from any political interference. For general enquiries about National Statistics, contact the National Statistics Public Enquiry Service: tel. 0845 601 3034 email [info@statistics.gov.uk](mailto:info@statistics.gov.uk). You can also find National Statistics on the internet at [www.statistics.gov.uk](http://www.statistics.gov.uk).

---

## Section 1: UK monthly slaughter estimates

This table shows monthly estimates of the number of cattle, sheep and pigs slaughtered for meat for human consumption in the United Kingdom. The survey is run according to statistical, rather than calendar months, the number of weeks in the statistical month is specified below.

**Table 1: UK monthly slaughter estimates**

Thousand Head

<b>United Kingdom</b>	<b>January 2012</b> 5 weeks	<b>February 2012</b> 4 weeks	<b>March 2012</b> 4 weeks
Steers	89	78	78
Heifers	75	62	60
Young Bulls	22	18	19
Cows and Adult Bulls	60	45	40
Calves	6	6	7
Other Sheep and Lambs	977	786	820
Ewes and Rams	170	139	133
Clean Pigs	939	768	771
Sows and Boars	26	19	21

\* Data are confidential

## Section 2: UK average dressed carcass weights

This table shows the monthly average dressed carcass weight of livestock slaughtered for meat for human consumption in the United Kingdom.

**Table 2: UK average dressed carcass weights**

Kilogramme

<b>United Kingdom</b>	<b>January 2012</b>	<b>February 2012</b>	<b>March 2012</b>
Steers	368.4	370.2	370.4
Heifers	325.0	324.5	324.8
Young Bulls	348.4	348.5	346.7
Cows and Adult Bulls	318.6	319.4	321.3
Calves	49.5	46.0	47.9
Other Sheep and Lambs	19.6	19.8	20.1
Ewes and Rams	25.5	25.8	26.4
Clean Pigs	79.1	79.3	79.0
Sows and Boars	148.7	149.5	148.8

### Section 3: UK monthly home-killed production of meat

This table shows the monthly volumes of meat produced in the United Kingdom. Data is shown according to statistical, rather than calendar months, number of weeks in statistical month as specified.

**Table 3: UK monthly home-killed production of meat**

Thousand Tonnes

United Kingdom	January 2012 5 weeks	February 2012 4 weeks	March 2012 4 weeks
Beef	84	70	68
Mutton and Lamb	23	19	20
Pigmeat	78	64	64

### Section 4: UK average weekly slaughterings

This following table shows the average weekly slaughter figures for the last thirteen months. The monthly slaughter figures in section one are affected by the number of weeks in the statistical month. To get a clearer measure of trends weekly averages are calculated by dividing the number of livestock slaughtered each month by the number of weeks in the statistical month.

Longer term trends can be seen in the charts following this table.

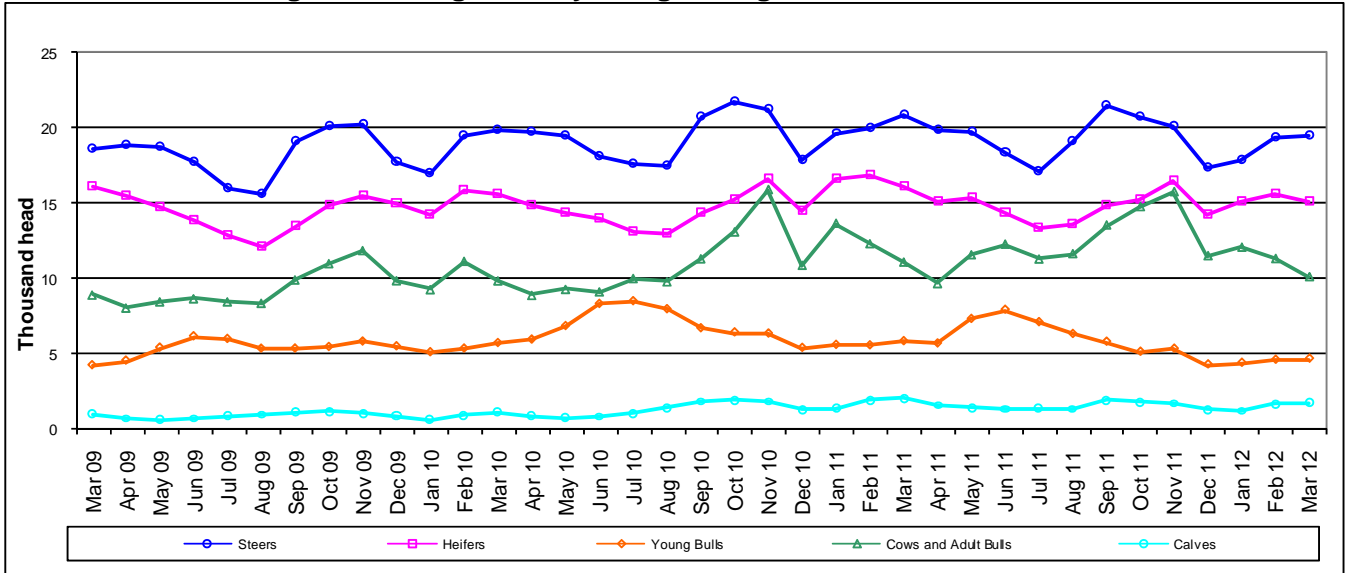
**Table 4: UK average weekly slaughterings**

Thousand Head

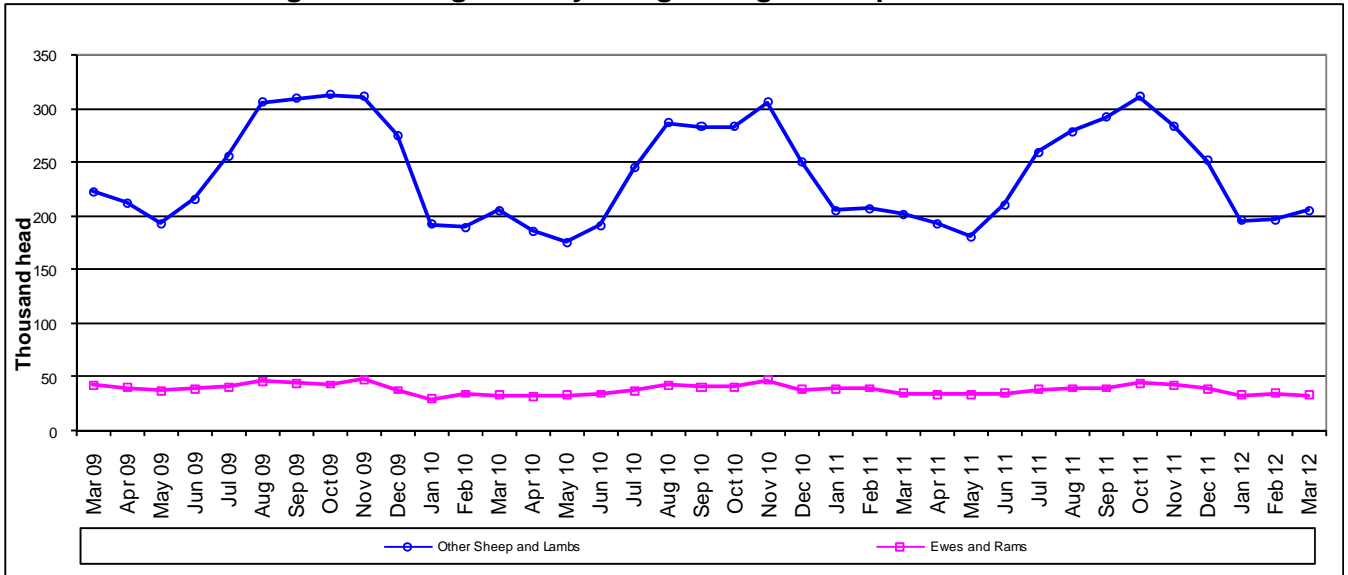
United Kingdom	2011					2012							
	Mar	Apr	May	Jun	Jul	Aug	Sep	Oct	Nov	Dec	Jan	Feb	Mar
Steers	21	20	20	18	17	19	22	21	20	17	18	19	20
Heifers	16	15	15	14	13	14	15	15	16	14	15	16	15
Young Bulls	6	6	7	8	7	6	6	5	5	4	4	5	5
Cows and Adult Bulls	11	10	12	12	11	12	13	15	16	11	12	11	10
Calves	2	2	1	1	1	1	2	2	2	1	1	2	2
Other Sheep and Lambs	201	192	180	211	260	279	291	312	284	252	195	196	205
Ewes and Rams	35	34	34	35	39	40	40	45	43	39	34	35	33
Clean Pigs	189	177	178	185	187	190	199	199	207	186	188	192	193
Sows and Boars	*	*	*	*	*	*	*	*	*	*	5	5	5

\* Data are confidential

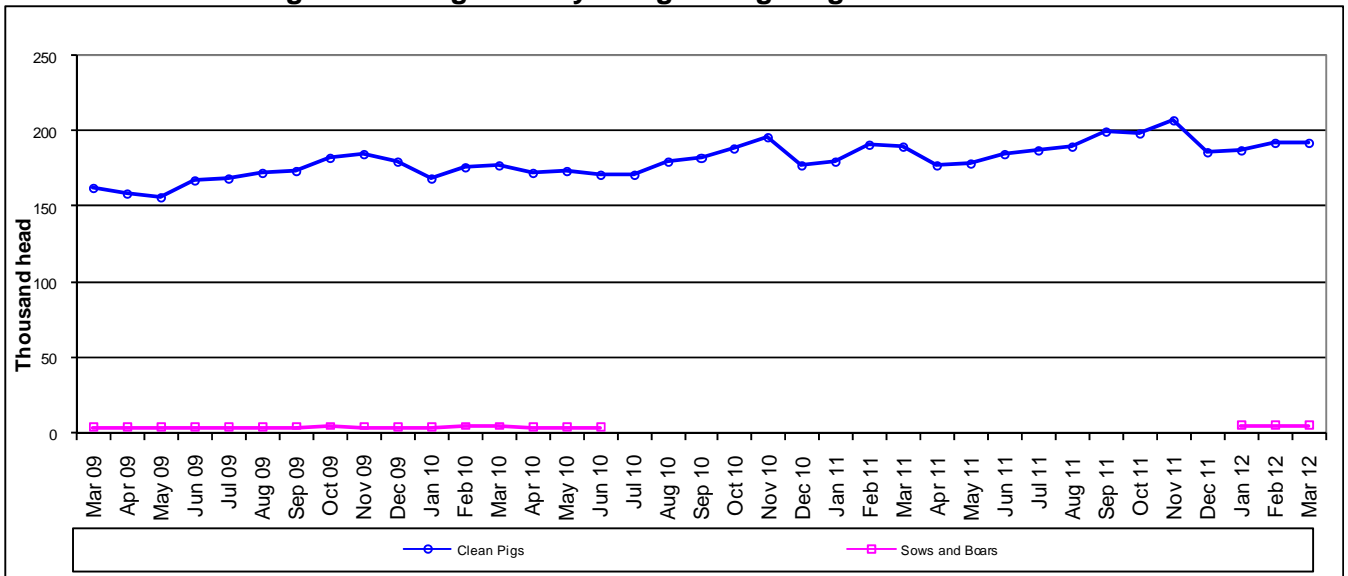
**Chart 4:1 United Kingdom average weekly slaughtering – Cattle**



**Chart 4:2 United Kingdom average weekly slaughtering – Sheep**



**Chart 4:3 United Kingdom average weekly slaughtering - Pigs**



## Section 5: UK slaughterings by country

This table shows monthly estimates of the number of cattle, sheep and pigs slaughtered for meat in England and Wales, Scotland, Great Britain and Northern Ireland. Data are shown in statistical months, rather than calendar months. The totals for the countries may not add up to the Great Britain totals or the United Kingdom totals in section one, due to rounding.

**Table 5: UK slaughterings by country** Thousand Head

	January 2012 5 weeks	February 2012 4 weeks	March 2012 4 weeks
<b>England &amp; Wales</b>			
Steers	55	48	49
Heifers	45	37	37
Young Bulls	15	12	13
Cows and Adult Bulls	46	34	31
Calves	5	6	6
Other Sheep and Lambs	825	658	696
Ewes and Rams	165	135	129
Clean Pigs	720	592	597
Sows and Boars	25	19	21
<b>Scotland</b>			
Steers	20	18	18
Heifers	18	15	14
Young Bulls	2	2	2
Cows and Adult Bulls	6	4	4
Calves	0	0	0
Other Sheep and Lambs	129	110	108
Ewes and Rams	2	2	2
Clean Pigs	64	52	49
Sows and Boars	0	0	0
<b>Great Britain</b>			
Steers	75	66	67
Heifers	63	52	51
Young Bulls	17	14	14
Cows and Adult Bulls	51	38	35
Calves	5	6	6
Other Sheep and Lambs	953	768	804
Ewes and Rams	167	137	131
Clean Pigs	784	644	646
Sows and Boars	26	19	21
<b>Northern Ireland</b>			
Steers	15	12	11
Heifers	12	10	9
Young Bulls	5	4	4
Cows and Adult Bulls	9	7	6
Calves	0	0	0
Other Sheep and Lambs	23	18	15
Ewes and Rams	3	3	2
Clean Pigs	155	124	124
Sows and Boars	0	0	0

\* Data are confidential

## Section 6: Methodology, Notes and Revisions Policy

1. The information in this notice is used by the UK government and the EU as evidence for assessing market conditions and evaluating agricultural policy. The slaughter statistics are also required by the EU under Regulation (EC) No 1165/2008. Other users include the food and farming industry, academia and the general public. Contact details are available on the front page of this notice, for you to send feedback or ask questions about the information provided.
2. Defra runs a monthly survey of registered England and Wales slaughterhouses. It is a statutory survey of 109 respondents that collects information on livestock slaughter numbers and weight of meat produced. All major slaughterhouses participate in the survey and the response rate is typically 100%. These data are supplemented by administrative data for smaller slaughterhouses. Similar surveys are run by RERAD in Scotland and by DARD in Northern Ireland. The England and Wales slaughter survey accounts for around 90% of the E&W slaughterhouse throughput for each livestock type.
3. Information on the weight of meat produced from a sample of animals weighed at slaughterhouses is obtained from survey respondents, around 55 slaughterhouse respondents. From the information provided average dressed carcass weights for each animal type are primarily calculated by adding up the total weight of the meat produced and dividing by the number of animals weighed. Cold dressed carcass weights are recorded.
4. The volume of meat production is estimated from the number of all livestock slaughtered and average dressed carcass weight information collected. Home killed production includes livestock imported into the United Kingdom for slaughter.
5. The data are subject to a variety of validation checks which identify inconsistencies in the data. All data are cleaned prior to publication in discussion with the survey respondents.

### Revisions Policy

6. Figures in this notice are provisional and subject to revision. We will provide information about any revisions we make to previously published information in this statistics notice and the associated datasets. Revisions could occur for various reasons, including:
  - a. if we have not received survey data from respondents we make an estimate based on their previous returns. These estimates will be replaced with actual survey data when it is received.
  - b. survey respondents occasionally supply amended figures for previous periods.
  - c. if we have not received administrative data for the smaller slaughterhouses we make an estimate based on previous data received. These estimates will be replaced with actual data when it is received.
7. **This month revisions have been made to the data from February 2012 onwards.**