



UK SLAUGHTER STATISTICS

The latest National Statistics produced by Defra on UK slaughterings of cattle, sheep and pigs were released on 21 February 2013 according to the arrangements approved by the UK Statistics Authority.

This monthly notice will be updated at 09:30 on 21 March 2013.

Contents

Section 1	UK slaughter numbers	page 2
Section 2	UK average dressed carcase weights	page 2
Section 3	UK home-killed meat production	page 3
Section 4	UK average weekly slaughter estimates	page 3 to 4
Section 5	UK slaughterings by country	page 5
Section 6	Methodology, notes and revisions policy	page 6

Key points

This release shows the latest monthly information on the slaughtering of cattle, sheep and pigs. It also includes dressed carcase weight and meat production information. The key results for **January 2013** are given below:

- **Cattle:** UK prime cattle slaughterings were 3.1 per cent lower than in January 2012 at 181 thousand head. Beef and veal production was 82 thousand tonnes, 3.3 per cent lower than in January 2012.
- **Sheep:** UK clean sheep slaughterings were 13 per cent higher than in January 2012 at 1104 thousand head. Mutton and lamb production was 26 thousand tonnes, 10.1 per cent higher than in January 2012.
- **Pigs:** UK clean pig slaughterings were 1.5 per cent higher than in January 2012 at 954 thousand head. Pigmeat production was 80 thousand tonnes, 2.1 per cent higher than in January 2012.

This notice and additional tables providing longer term trends of slaughterings, meat production and supplies are available to download at: <http://www.defra.gov.uk/statistics/foodfarm/food/slaughter/>

Enquiries to: Sarah Thompson, Department for Environment, Food and Rural Affairs, Room 301, Foss House, Kings Pool, 1 - 2 Peasholme Green, York YO1 7PX. Tel: ++ 44 (0)1904 455097, email:sarah.thompson@defra.gsi.gov.uk

A National Statistics publication. National Statistics are produced to high professional standards. They undergo regular quality assurance reviews to ensure that they meet customer needs. They are produced free from any political interference. For general enquiries about National Statistics, contact the National Statistics Public Enquiry Service: tel. 0845 601 3034 email info@statistics.gov.uk. You can also find National Statistics on the internet at www.statistics.gov.uk.

Section 1: UK monthly slaughter estimates

This table shows monthly estimates of the number of cattle, sheep and pigs slaughtered for meat for human consumption in the United Kingdom. The survey is run according to statistical, rather than calendar months, the number of weeks in the statistical month is specified below.

Table 1: UK monthly slaughter estimates Thousand Head

United Kingdom	November 2012 4 weeks	December 2012 4 weeks	January 2013 5 weeks
Steers	78	68	87
Heifers	61	54	71
Young Bulls	22	18	22
Cows and Adult Bulls	67	48	63
Calves	8	6	8
Other Sheep and Lambs	1071	1053	1104
Ewes and Rams	153	157	189
Clean Pigs	831	766	954
Sows and Boars	21	17	25

Section 2: UK average dressed carcass weights

This table shows the monthly average dressed carcass weight of livestock slaughtered for meat for human consumption in the United Kingdom.

Table 2: UK average dressed carcass weights Kilogramme

United Kingdom	November 2012	December 2012	January 2013
Steers	358.7	362.1	363.4
Heifers	312.7	316.6	318.8
Young Bulls	342.3	344.4	340.4
Cows and Adult Bulls	301.7	305.4	308.1
Calves	43.7	49.2	47.3
Other Sheep and Lambs	18.7	18.2	19.0
Ewes and Rams	24.6	25.6	25.9
Clean Pigs	78.6	77.7	79.8
Sows and Boars	149.1	155.2	145.2

Section 3: UK monthly home-killed production of meat

This table shows the monthly volumes of meat produced in the United Kingdom. Data is shown according to statistical, rather than calendar months, number of weeks in statistical month as specified.

Table 3: UK monthly home-killed production of meat

Thousand Tonnes

United Kingdom	November 2012	December 2012	January 2013
	4 weeks	4 weeks	5 weeks
Beef	75	63	82
Mutton and Lamb	24	23	26
Pigmeat	69	62	80

Section 4: UK average weekly slaughterings

This following table shows the average weekly slaughter figures for the last thirteen months. The monthly slaughter figures in section one are affected by the number of weeks in the statistical month. To get a clearer measure of trends weekly averages are calculated by dividing the number of livestock slaughtered each month by the number of weeks in the statistical month.

Longer term trends can be seen in the charts following this table.

Table 4: UK average weekly slaughterings

Thousand Head

United Kingdom	2012												2013
	Jan	Feb	Mar	Apr	May	Jun	Jul	Aug	Sep	Oct	Nov	Dec	Jan
Steers	18	19	20	20	19	17	17	17	19	20	20	17	17
Heifers	15	16	15	14	14	12	12	12	13	14	15	14	14
Young Bulls	4	5	5	5	6	7	7	6	6	5	5	4	4
Cows and Adult Bulls	12	11	10	10	11	11	12	12	14	16	17	12	13
Calves	1	2	2	1	1	1	1	1	2	2	2	2	2
Other Sheep and Lambs	195	196	204	189	191	196	230	262	260	293	268	263	221
Ewes and Rams	34	35	33	31	31	31	35	38	37	44	38	39	38
Clean Pigs	188	192	193	187	189	185	192	195	197	201	208	192	191
Sows and Boars	5	5	5	5	5	5	5	5	6	5	5	4	5

Chart 4:1 United Kingdom average weekly slaughtering – Cattle

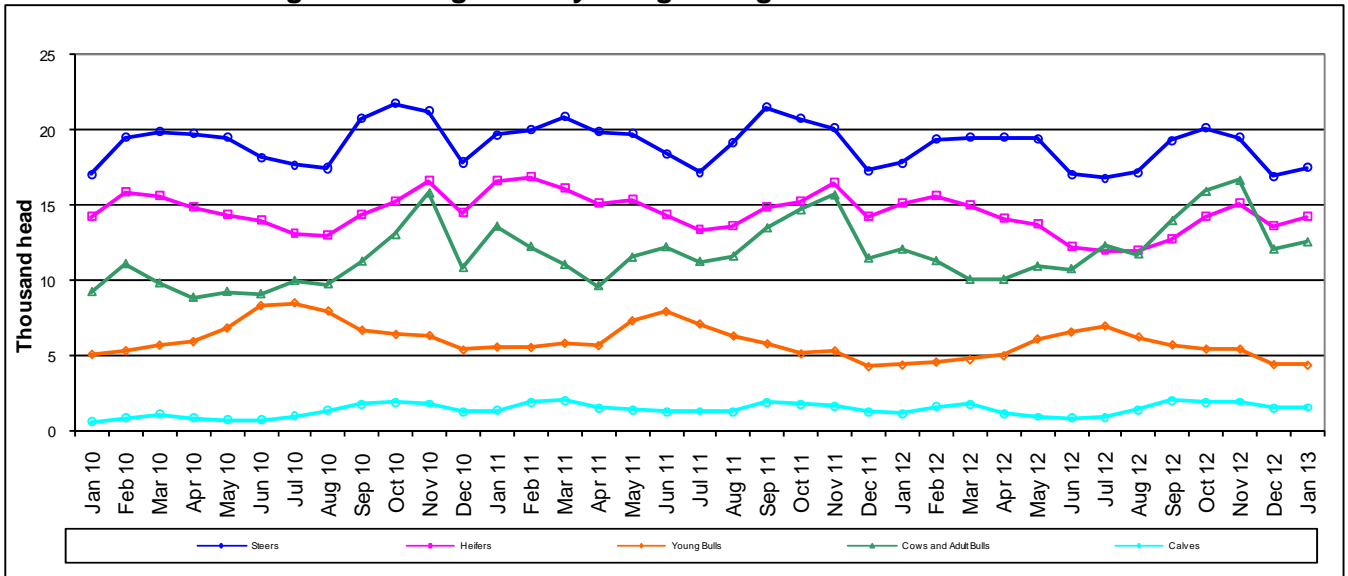


Chart 4:2 United Kingdom average weekly slaughtering – Sheep

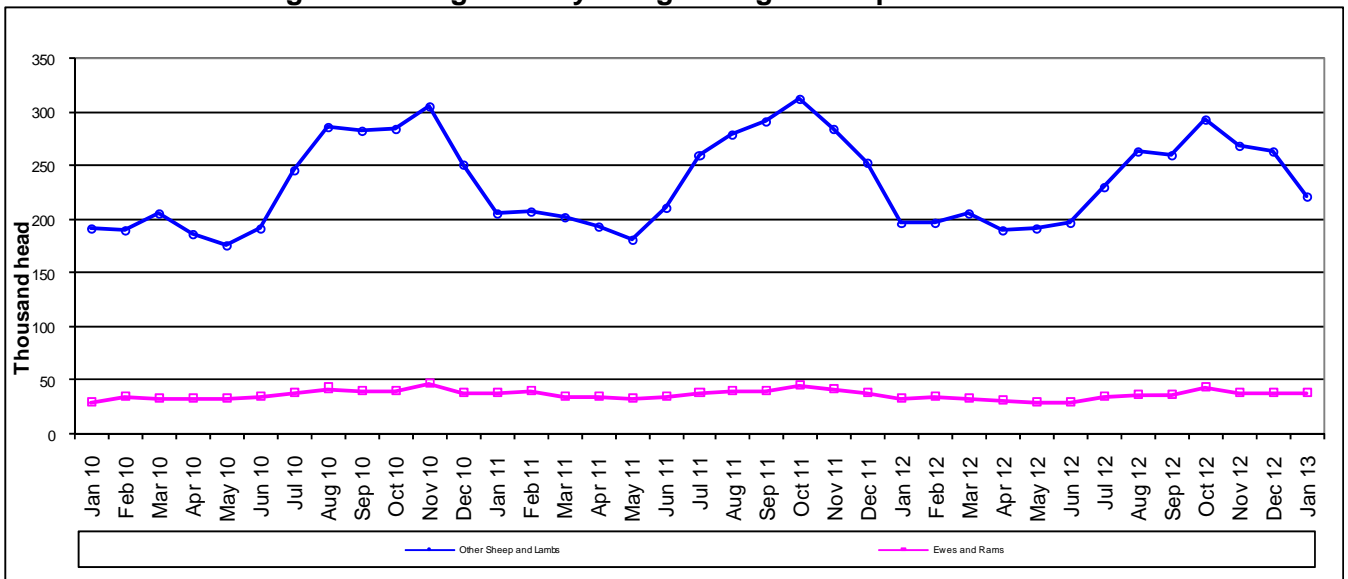
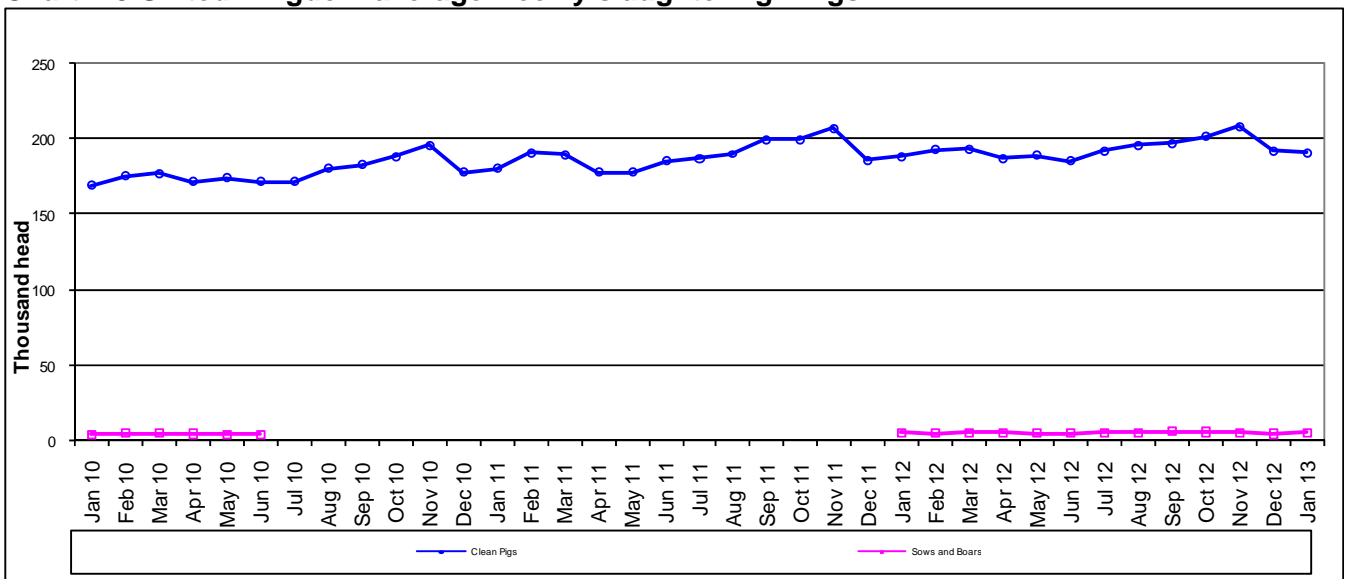


Chart 4:3 United Kingdom average weekly slaughtering - Pigs



Section 5: UK slaughterings by country

This table shows monthly estimates of the number of cattle, sheep and pigs slaughtered for meat in England and Wales, Scotland, Great Britain and Northern Ireland. Data are shown in statistical months, rather than calendar months. The totals for the countries may not add up to the Great Britain totals or the United Kingdom totals in section one, due to rounding.

Table 5: UK slaughterings by country

Thousand Head

	November 2012 4 weeks	December 2012 4 weeks	January 2013 5 weeks
England & Wales			
Steers	48	40	53
Heifers	36	30	40
Young Bulls	15	12	15
Cows and Adult Bulls	49	35	46
Calves	7	6	7
Other Sheep and Lambs	912	917	938
Ewes and Rams	147	152	183
Clean Pigs	672	628	770
Sows and Boars	21	17	25
Scotland			
Steers	16	15	20
Heifers	14	14	18
Young Bulls	2	2	2
Cows and Adult Bulls	6	5	6
Calves	0	0	0
Other Sheep and Lambs	119	104	134
Ewes and Rams	2	2	2
Clean Pigs	27	23	29
Sows and Boars	0	0	0
Great Britain			
Steers	65	56	73
Heifers	50	44	58
Young Bulls	17	14	17
Cows and Adult Bulls	55	40	52
Calves	7	6	7
Other Sheep and Lambs	1031	1021	1073
Ewes and Rams	150	154	185
Clean Pigs	699	652	799
Sows and Boars	21	17	25
Northern Ireland			
Steers	13	12	15
Heifers	10	10	13
Young Bulls	4	4	5
Cows and Adult Bulls	11	9	10
Calves	1	0	1
Other Sheep and Lambs	41	32	31
Ewes and Rams	3	3	4
Clean Pigs	133	115	155
Sows and Boars	0	0	0

Section 6: Methodology, Notes and Revisions Policy

1. The information in this notice is used by the UK government and the EU as evidence for assessing market conditions and evaluating agricultural policy. The slaughter statistics are also required by the EU under Regulation (EC) No 1165/2008. Other users include the food and farming industry, academia and the general public. Contact details are available on the front page of this notice, for you to send feedback or ask questions about the information provided.
2. Defra runs a monthly survey of registered England and Wales slaughterhouses. It is a statutory survey of 106 respondents that collects information on livestock slaughter numbers and weight of meat produced. All major slaughterhouses participate in the survey and the response rate is typically 100%. These data are supplemented by administrative data for smaller slaughterhouses. Similar surveys are run by RERAD in Scotland and by DARD in Northern Ireland. The England and Wales slaughter survey accounts for around 90% of the E&W slaughterhouse throughput for each livestock type.
3. Information on the weight of meat produced from a sample of animals weighed at slaughterhouses is obtained from survey respondents, around 55 slaughterhouse respondents. From the information provided average dressed carcass weights for each animal type are primarily calculated by adding up the total weight of the meat produced and dividing by the number of animals weighed. Cold dressed carcass weights are recorded.
4. The volume of meat production is estimated from the number of all livestock slaughtered and average dressed carcass weight information collected. Home killed production includes livestock imported into the United Kingdom for slaughter.
5. The data are subject to a variety of validation checks which identify inconsistencies in the data. All data are cleaned prior to publication in discussion with the survey respondents.

Revisions Policy

6. Figures in this notice are provisional and subject to revision. We will provide information about any revisions we make to previously published information in this statistics notice and the associated datasets. Revisions could occur for various reasons, including:
 - a. if we have not received survey data from respondents we make an estimate based on their previous returns. These estimates will be replaced with actual survey data when it is received.
 - b. survey respondents occasionally supply amended figures for previous periods.
 - c. if we have not received administrative data for the smaller slaughterhouses we make an estimate based on previous data received. These estimates will be replaced with actual data when it is received.
7. **This month revisions have been made to the data from January 2012 onwards.**