



UK SLAUGHTER STATISTICS

The latest National Statistics produced by Defra on UK slaughterings of cattle, sheep and pigs were released on 22 November 2012 according to the arrangements approved by the UK Statistics Authority.

This monthly notice will be updated at 09:30 on 20 December 2012.

Contents

Section 1	UK slaughter numbers	page 2
Section 2	UK average dressed carcase weights	page 2
Section 3	UK home-killed meat production	page 3
Section 4	UK average weekly slaughter estimates	page 3 to 4
Section 5	UK slaughterings by country	page 5
Section 6	Methodology, notes and revisions policy	page 6

Key points

This release shows the latest monthly information on the slaughtering of cattle, sheep and pigs. It also includes dressed carcase weight and meat production information. The key results for **October 2012** are given below:

- **Cattle:** UK prime cattle slaughterings were 3.5 per cent lower than in October 2011 at 198 thousand head. Beef and veal production was 92 thousand tonnes, 1.7 per cent lower than in October 2011.
- **Sheep:** UK clean sheep slaughterings were 7 per cent lower than in October 2011 at 1447 thousand head. Mutton and lamb production was 33 thousand tonnes, 7 per cent lower than in October 2011.
- **Pigs:** UK clean pig slaughterings were 1.0 per cent higher than in October 2011 at 1004 thousand head. Pigmeat production was 81 thousand tonnes, 0.8 per cent lower than in October 2011.

This notice and additional tables providing longer term trends of slaughterings, meat production and supplies are available to download at: <http://www.defra.gov.uk/statistics/foodfarm/food/slaughter/>

Enquiries to: Sarah Thompson, Department for Environment, Food and Rural Affairs, Room 301, Foss House, Kings Pool, 1 - 2 Peasholme Green, York YO1 7PX. Tel: ++ 44 (0)1904 455097, email:sarah.thompson@defra.gsi.gov.uk

A National Statistics publication. National Statistics are produced to high professional standards. They undergo regular quality assurance reviews to ensure that they meet customer needs. They are produced free from any political interference. For general enquiries about National Statistics, contact the National Statistics Public Enquiry Service: tel. 0845 601 3034 email info@statistics.gov.uk. You can also find National Statistics on the internet at www.statistics.gov.uk.

Section 1: UK monthly slaughter estimates

This table shows monthly estimates of the number of cattle, sheep and pigs slaughtered for meat for human consumption in the United Kingdom. The survey is run according to statistical, rather than calendar months, the number of weeks in the statistical month is specified below.

Table 1: UK monthly slaughter estimates Thousand Head

United Kingdom	August 2012 4 weeks	September 2012 4 weeks	October 2012 5 weeks
Steers	69	77	100
Heifers	48	51	71
Young Bulls	25	23	27
Cows and Adult Bulls	46	55	78
Calves	6	8	10
Other Sheep and Lambs	1053	1040	1447
Ewes and Rams	150	149	221
Clean Pigs	781	786	1004
Sows and Boars	21	24	27

Section 2: UK average dressed carcass weights

This table shows the monthly average dressed carcass weight of livestock slaughtered for meat for human consumption in the United Kingdom.

Table 2: UK average dressed carcass weights Kilogramme

United Kingdom	August 2012	September 2012	October 2012
Steers	365.7	363.4	361.4
Heifers	318.1	316.8	314.7
Young Bulls	350.4	345.5	345.4
Cows and Adult Bulls	304.5	301.8	300.4
Calves	47.3	50.0	46.2
Other Sheep and Lambs	18.7	18.7	18.5
Ewes and Rams	26.3	26.3	26.6
Clean Pigs	77.7	77.8	76.6
Sows and Boars	150.0	145.8	149.2

Section 3: UK monthly home-killed production of meat

This table shows the monthly volumes of meat produced in the United Kingdom. Data is shown according to statistical, rather than calendar months, number of weeks in statistical month as specified.

Table 3: UK monthly home-killed production of meat

Thousand Tonnes

United Kingdom	August 2012	September 2012	October 2012
	4 weeks	4 weeks	5 weeks
Beef	63	69	92
Mutton and Lamb	24	23	33
Pigmeat	64	65	81

Section 4: UK average weekly slaughterings

This following table shows the average weekly slaughter figures for the last thirteen months. The monthly slaughter figures in section one are affected by the number of weeks in the statistical month. To get a clearer measure of trends weekly averages are calculated by dividing the number of livestock slaughtered each month by the number of weeks in the statistical month.

Longer term trends can be seen in the charts following this table.

Table 4: UK average weekly slaughterings

Thousand Head

United Kingdom	2011			2012										
	Oct	Nov	Dec	Jan	Feb	Mar	Apr	May	Jun	Jul	Aug	Sep	Oct	
Steers	21	20	17	18	19	20	20	19	17	17	17	19	20	
Heifers	15	16	14	15	16	15	14	14	12	12	12	13	14	
Young Bulls	5	5	4	4	5	5	5	6	7	7	6	6	5	
Cows and Adult Bulls	15	16	11	12	11	10	10	11	11	12	12	14	16	
Calves	2	2	1	1	2	2	1	1	1	1	1	2	2	
Other Sheep and Lambs	312	284	252	195	196	204	189	191	196	230	263	260	289	
Ewes and Rams	45	43	39	34	35	33	31	31	31	35	38	37	44	
Clean Pigs	199	207	186	188	192	193	187	189	185	192	195	197	201	
Sows and Boars	*	*	*	5	5	5	5	5	5	5	5	5	6	5

* Data are confidential

Chart 4:1 United Kingdom average weekly slaughtering – Cattle

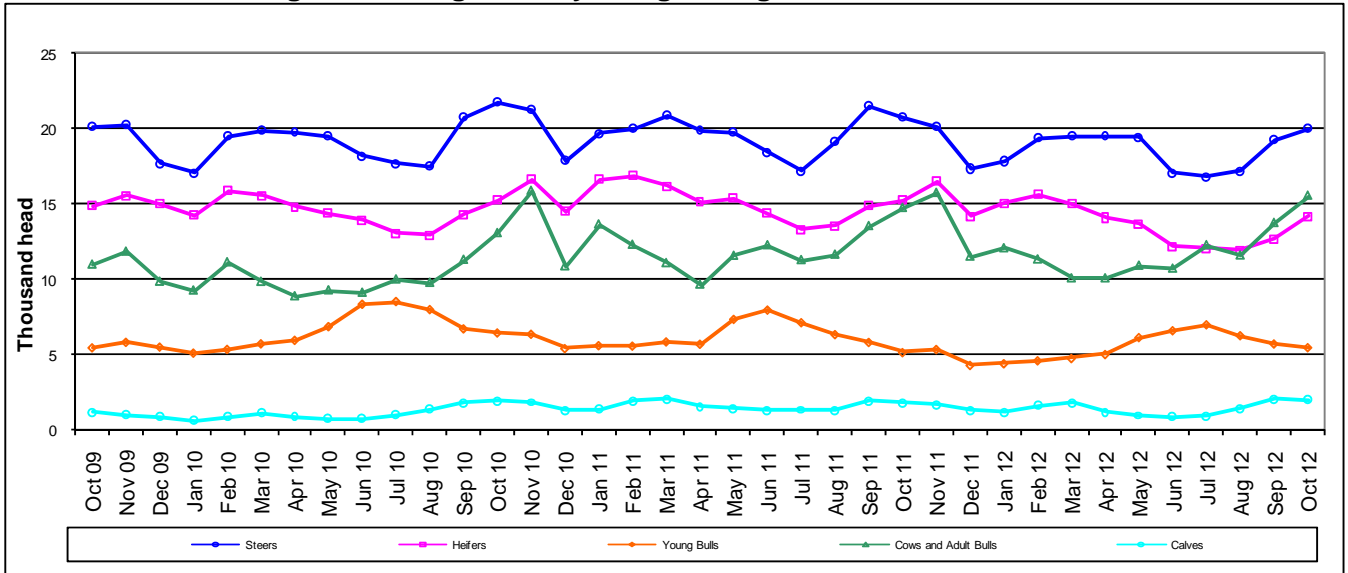


Chart 4:2 United Kingdom average weekly slaughtering – Sheep

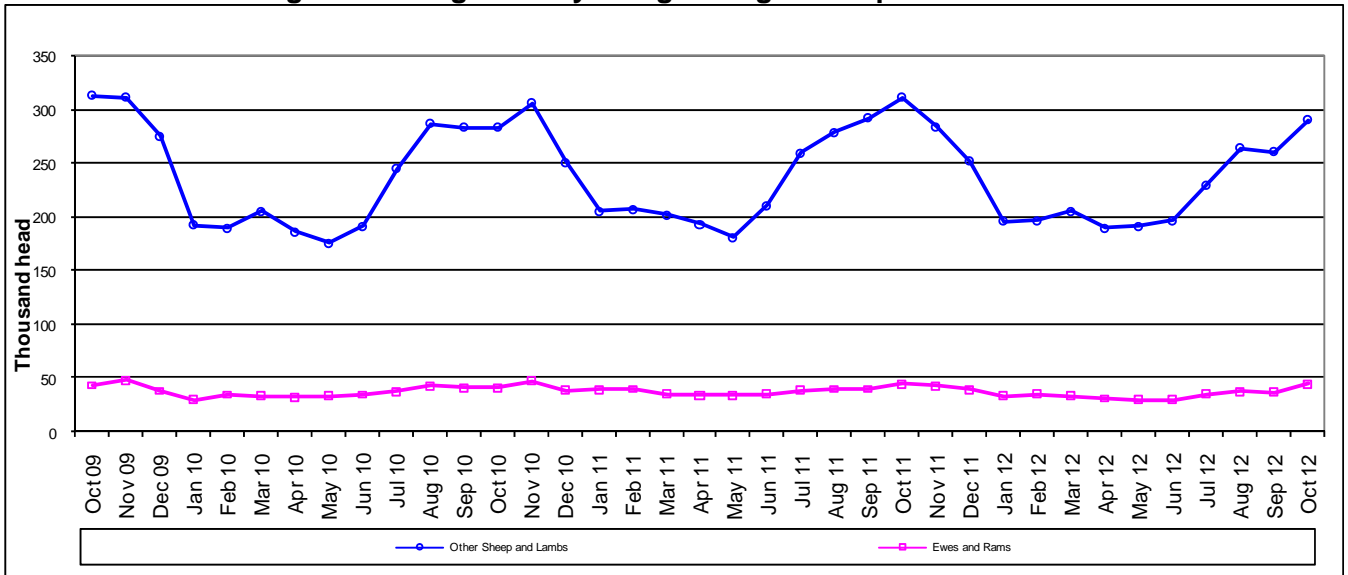
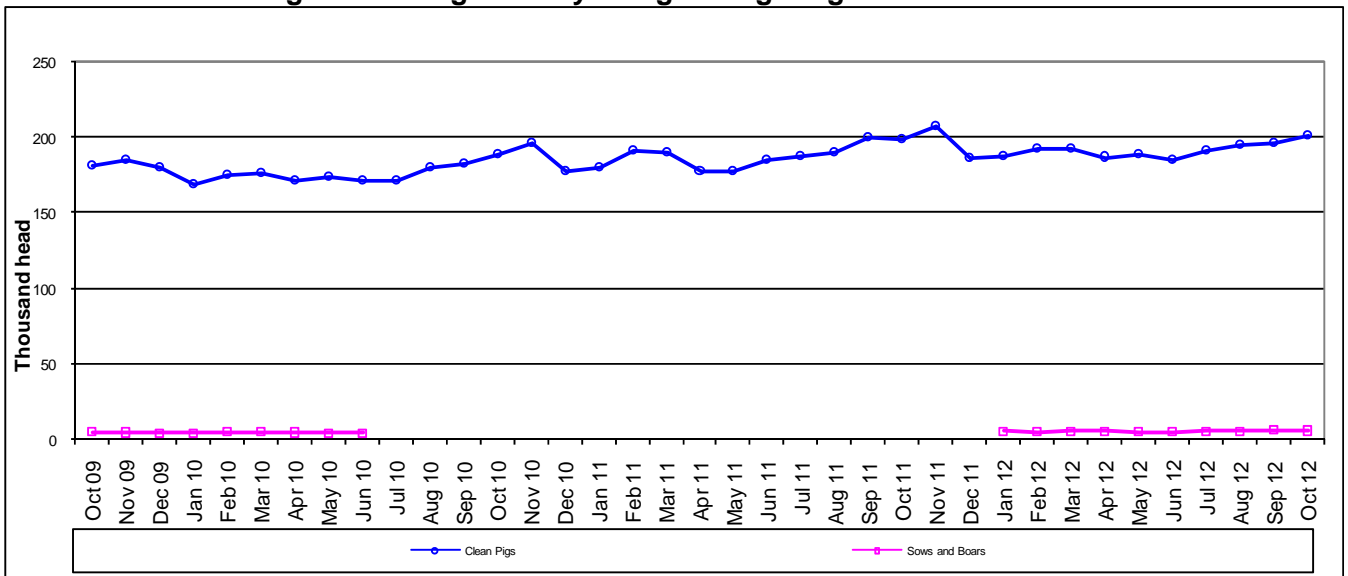


Chart 4:3 United Kingdom average weekly slaughtering - Pigs



Section 5: UK slaughterings by country

This table shows monthly estimates of the number of cattle, sheep and pigs slaughtered for meat in England and Wales, Scotland, Great Britain and Northern Ireland. Data are shown in statistical months, rather than calendar months. The totals for the countries may not add up to the Great Britain totals or the United Kingdom totals in section one, due to rounding.

Table 5: UK slaughterings by country

Thousand Head

	August 2012 4 weeks	September 2012 4 weeks	October 2012 5 weeks
England & Wales			
Steers	41	44	60
Heifers	29	31	43
Young Bulls	17	16	19
Cows and Adult Bulls	33	39	56
Calves	5	8	9
Other Sheep and Lambs	892	873	1253
Ewes and Rams	145	143	214
Clean Pigs	600	610	793
Sows and Boars	21	24	27
Scotland			
Steers	14	17	21
Heifers	10	11	17
Young Bulls	3	3	3
Cows and Adult Bulls	5	6	7
Calves	0	0	0
Other Sheep and Lambs	116	123	141
Ewes and Rams	2	2	3
Clean Pigs	52	49	50
Sows and Boars	0	0	0
Great Britain			
Steers	56	61	81
Heifers	39	42	60
Young Bulls	20	18	22
Cows and Adult Bulls	38	45	63
Calves	5	8	9
Other Sheep and Lambs	1008	996	1394
Ewes and Rams	147	145	217
Clean Pigs	652	659	842
Sows and Boars	21	24	27
Northern Ireland			
Steers	13	15	20
Heifers	8	9	11
Young Bulls	5	4	5
Cows and Adult Bulls	8	10	14
Calves	0	0	1
Other Sheep and Lambs	45	44	53
Ewes and Rams	3	4	4
Clean Pigs	129	128	162
Sows and Boars	0	0	0

Section 6: Methodology, Notes and Revisions Policy

1. The information in this notice is used by the UK government and the EU as evidence for assessing market conditions and evaluating agricultural policy. The slaughter statistics are also required by the EU under Regulation (EC) No 1165/2008. Other users include the food and farming industry, academia and the general public. Contact details are available on the front page of this notice, for you to send feedback or ask questions about the information provided.
2. Defra runs a monthly survey of registered England and Wales slaughterhouses. It is a statutory survey of 109 respondents that collects information on livestock slaughter numbers and weight of meat produced. All major slaughterhouses participate in the survey and the response rate is typically 100%. These data are supplemented by administrative data for smaller slaughterhouses. Similar surveys are run by RERAD in Scotland and by DARD in Northern Ireland. The England and Wales slaughter survey accounts for around 90% of the E&W slaughterhouse throughput for each livestock type.
3. Information on the weight of meat produced from a sample of animals weighed at slaughterhouses is obtained from survey respondents, around 55 slaughterhouse respondents. From the information provided average dressed carcass weights for each animal type are primarily calculated by adding up the total weight of the meat produced and dividing by the number of animals weighed. Cold dressed carcass weights are recorded.
4. The volume of meat production is estimated from the number of all livestock slaughtered and average dressed carcass weight information collected. Home killed production includes livestock imported into the United Kingdom for slaughter.
5. The data are subject to a variety of validation checks which identify inconsistencies in the data. All data are cleaned prior to publication in discussion with the survey respondents.

Revisions Policy

6. Figures in this notice are provisional and subject to revision. We will provide information about any revisions we make to previously published information in this statistics notice and the associated datasets. Revisions could occur for various reasons, including:
 - a. if we have not received survey data from respondents we make an estimate based on their previous returns. These estimates will be replaced with actual survey data when it is received.
 - b. survey respondents occasionally supply amended figures for previous periods.
 - c. if we have not received administrative data for the smaller slaughterhouses we make an estimate based on previous data received. These estimates will be replaced with actual data when it is received.
7. **This month revisions have been made to the data from April 2012 onwards.**