



UK SLAUGHTER STATISTICS

The latest National Statistics produced by Defra on UK slaughterings of cattle, sheep and pigs were released on 20 December 2012 according to the arrangements approved by the UK Statistics Authority.

This monthly notice will be updated at 09:30 on 17 January 2013.

Contents

Section 1	UK slaughter numbers	page 2
Section 2	UK average dressed carcase weights	page 2
Section 3	UK home-killed meat production	page 3
Section 4	UK average weekly slaughter estimates	page 3 to 4
Section 5	UK slaughterings by country	page 5
Section 6	Methodology, notes and revisions policy	page 6

Key points

This release shows the latest monthly information on the slaughtering of cattle, sheep and pigs. It also includes dressed carcase weight and meat production information. The key results for **November 2012** are given below:

- **Cattle:** UK prime cattle slaughterings were 4.8 per cent lower than in November 2011 at 160 thousand head. Beef and veal production was 74 thousand tonnes, 3.6 per cent lower than in November 2011.
- **Sheep:** UK clean sheep slaughterings were 4.6 per cent lower than in November 2011 at 1084 thousand head. Mutton and lamb production was 24 thousand tonnes, 7.6 per cent lower than in November 2011.
- **Pigs:** UK clean pig slaughterings were 0.1 per cent higher than in November 2011 at 830 thousand head. Pigmeat production was 68 thousand tonnes, 0.2 per cent higher than in November 2011.

This notice and additional tables providing longer term trends of slaughterings, meat production and supplies are available to download at: <http://www.defra.gov.uk/statistics/foodfarm/food/slaughter/>

Enquiries to: Sarah Thompson, Department for Environment, Food and Rural Affairs, Room 301, Foss House, Kings Pool, 1 - 2 Peasholme Green, York YO1 7PX. Tel: ++ 44 (0)1904 455097, email:sarah.thompson@defra.gsi.gov.uk

A National Statistics publication. National Statistics are produced to high professional standards. They undergo regular quality assurance reviews to ensure that they meet customer needs. They are produced free from any political interference. For general enquiries about National Statistics, contact the National Statistics Public Enquiry Service: tel. 0845 601 3034 email info@statistics.gov.uk. You can also find National Statistics on the internet at www.statistics.gov.uk.

Section 1: UK monthly slaughter estimates

This table shows monthly estimates of the number of cattle, sheep and pigs slaughtered for meat for human consumption in the United Kingdom. The survey is run according to statistical, rather than calendar months, the number of weeks in the statistical month is specified below.

Table 1: UK monthly slaughter estimates

Thousand Head

United Kingdom	September 2012 4 weeks	October 2012 5 weeks	November 2012 4 weeks
Steers	77	100	78
Heifers	51	71	60
Young Bulls	23	27	22
Cows and Adult Bulls	55	78	65
Calves	8	10	8
Other Sheep and Lambs	1040	1466	1084
Ewes and Rams	149	217	150
Clean Pigs	786	1005	830
Sows and Boars	24	27	21

Section 2: UK average dressed carcass weights

This table shows the monthly average dressed carcass weight of livestock slaughtered for meat for human consumption in the United Kingdom.

Table 2: UK average dressed carcass weights

Kilogramme

United Kingdom	September 2012	October 2012	November 2012
Steers	363.4	361.4	359.7
Heifers	316.8	314.7	313.6
Young Bulls	345.5	345.4	342.3
Cows and Adult Bulls	301.8	300.5	301.5
Calves	50.0	46.8	43.9
Other Sheep and Lambs	18.7	18.5	18.7
Ewes and Rams	26.3	26.6	25.0
Clean Pigs	77.8	78.8	78.6
Sows and Boars	145.8	149.2	149.3

Section 3: UK monthly home-killed production of meat

This table shows the monthly volumes of meat produced in the United Kingdom. Data is shown according to statistical, rather than calendar months, number of weeks in statistical month as specified.

Table 3: UK monthly home-killed production of meat

Thousand Tonnes

United Kingdom	September 2012	October 2012	November 2012
	4 weeks	5 weeks	4 weeks
Beef	69	92	74
Mutton and Lamb	23	33	24
Pigmeat	65	83	68

Section 4: UK average weekly slaughterings

This following table shows the average weekly slaughter figures for the last thirteen months. The monthly slaughter figures in section one are affected by the number of weeks in the statistical month. To get a clearer measure of trends weekly averages are calculated by dividing the number of livestock slaughtered each month by the number of weeks in the statistical month.

Longer term trends can be seen in the charts following this table.

Table 4: UK average weekly slaughterings

Thousand Head

United Kingdom	2011		2012										
	Nov	Dec	Jan	Feb	Mar	Apr	May	Jun	Jul	Aug	Sep	Oct	Nov
Steers	20	17	18	19	20	20	19	17	17	17	19	20	19
Heifers	16	14	15	16	15	14	14	12	12	12	13	14	15
Young Bulls	5	4	4	5	5	5	6	7	7	6	6	5	5
Cows and Adult Bulls	16	11	12	11	10	10	11	11	12	12	14	16	16
Calves	2	1	1	2	2	1	1	1	1	1	2	2	2
Other Sheep and Lambs	284	252	195	196	204	189	191	196	230	263	260	293	271
Ewes and Rams	43	39	34	35	33	31	31	31	35	38	37	43	38
Clean Pigs	207	186	188	192	193	187	189	185	192	195	197	201	207
Sows and Boars	*	*	5	5	5	5	5	5	5	5	6	5	5

* Data are confidential

Chart 4:1 United Kingdom average weekly slaughtering – Cattle

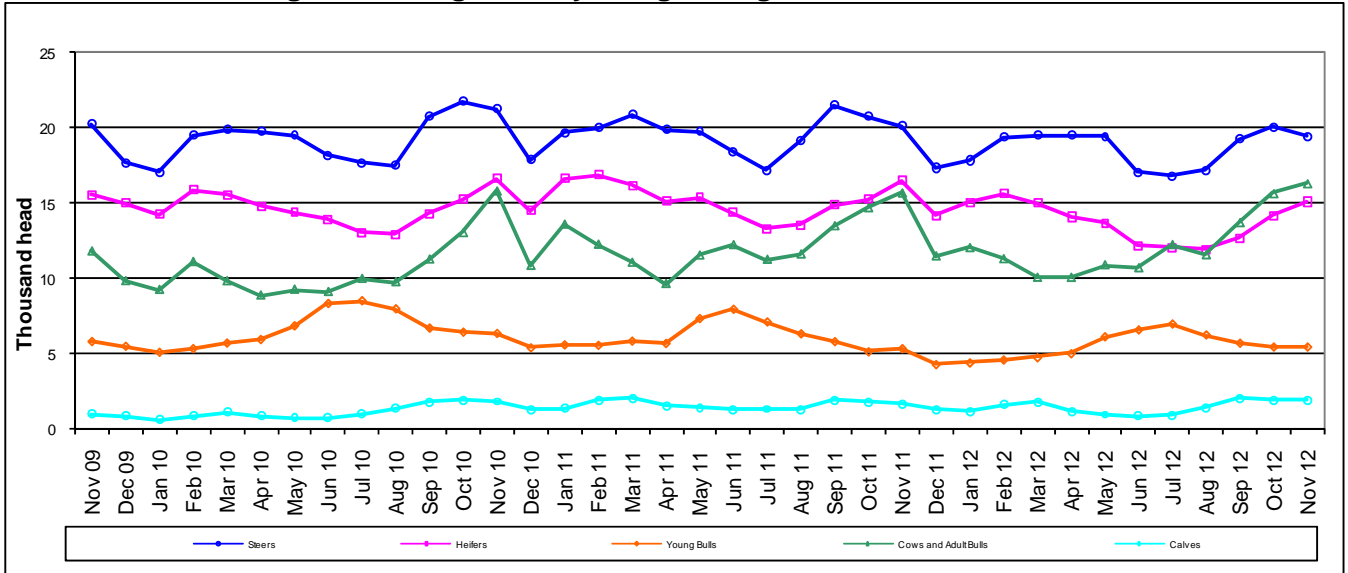


Chart 4:2 United Kingdom average weekly slaughtering – Sheep

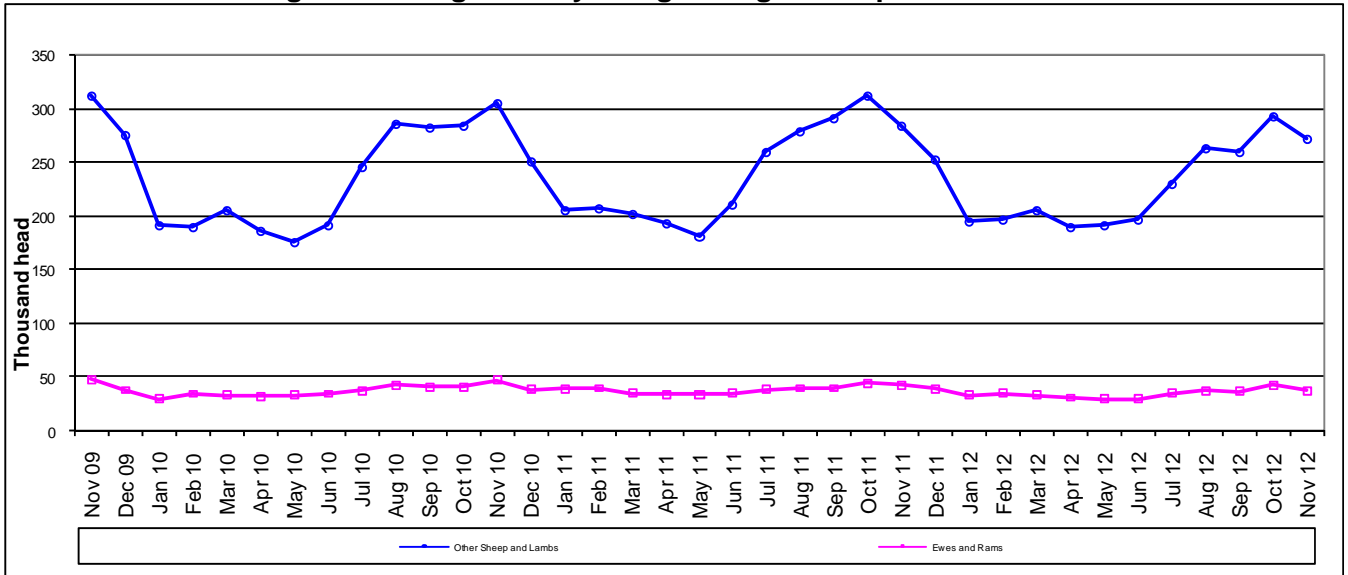
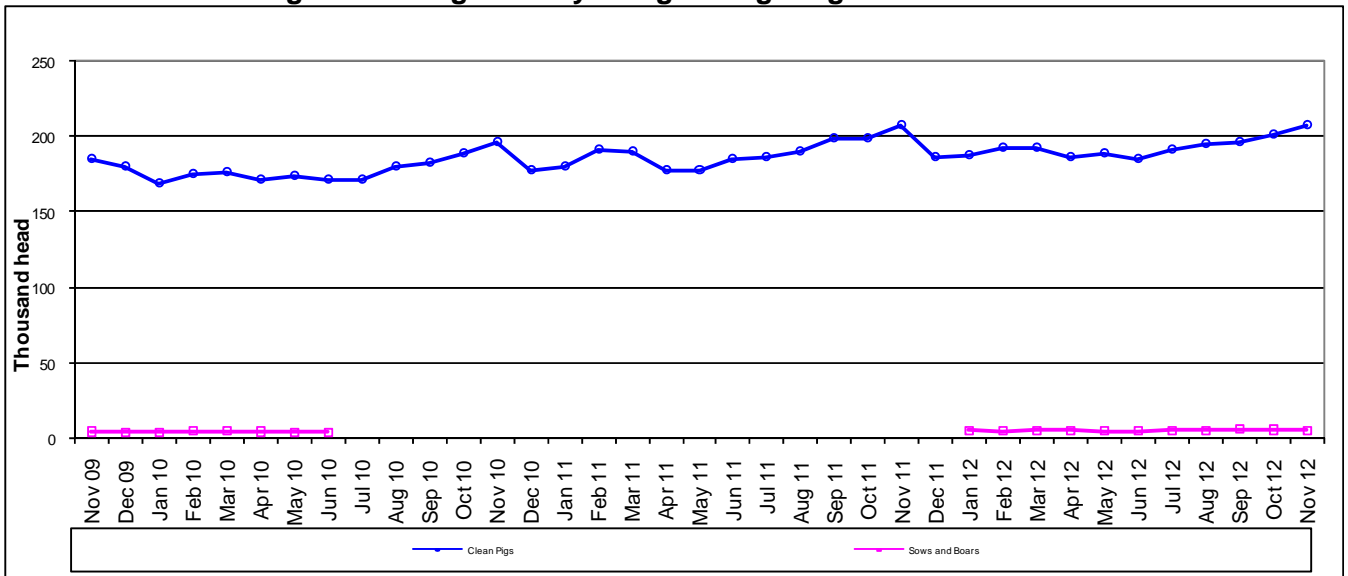


Chart 4:3 United Kingdom average weekly slaughtering - Pigs



Section 5: UK slaughterings by country

This table shows monthly estimates of the number of cattle, sheep and pigs slaughtered for meat in England and Wales, Scotland, Great Britain and Northern Ireland. Data are shown in statistical months, rather than calendar months. The totals for the countries may not add up to the Great Britain totals or the United Kingdom totals in section one, due to rounding.

Table 5: UK slaughterings by country

Thousand Head

	September 2012 4 weeks	October 2012 5 weeks	November 2012 4 weeks
England & Wales			
Steers	44	60	48
Heifers	31	43	36
Young Bulls	16	19	15
Cows and Adult Bulls	39	56	48
Calves	8	9	7
Other Sheep and Lambs	873	1271	924
Ewes and Rams	143	210	145
Clean Pigs	610	793	670
Sows and Boars	24	27	21
Scotland			
Steers	17	21	16
Heifers	11	17	14
Young Bulls	3	3	2
Cows and Adult Bulls	6	7	6
Calves	0	0	0
Other Sheep and Lambs	123	142	119
Ewes and Rams	2	3	2
Clean Pigs	49	50	27
Sows and Boars	0	0	0
Great Britain			
Steers	61	81	64
Heifers	42	60	50
Young Bulls	18	22	17
Cows and Adult Bulls	45	64	54
Calves	8	9	7
Other Sheep and Lambs	996	1413	1043
Ewes and Rams	145	213	147
Clean Pigs	659	843	697
Sows and Boars	24	27	21
Northern Ireland			
Steers	15	19	13
Heifers	9	11	10
Young Bulls	4	5	4
Cows and Adult Bulls	10	14	11
Calves	0	1	1
Other Sheep and Lambs	44	53	41
Ewes and Rams	4	4	3
Clean Pigs	128	162	133
Sows and Boars	0	0	0

Section 6: Methodology, Notes and Revisions Policy

1. The information in this notice is used by the UK government and the EU as evidence for assessing market conditions and evaluating agricultural policy. The slaughter statistics are also required by the EU under Regulation (EC) No 1165/2008. Other users include the food and farming industry, academia and the general public. Contact details are available on the front page of this notice, for you to send feedback or ask questions about the information provided.
2. Defra runs a monthly survey of registered England and Wales slaughterhouses. It is a statutory survey of 109 respondents that collects information on livestock slaughter numbers and weight of meat produced. All major slaughterhouses participate in the survey and the response rate is typically 100%. These data are supplemented by administrative data for smaller slaughterhouses. Similar surveys are run by RERAD in Scotland and by DARD in Northern Ireland. The England and Wales slaughter survey accounts for around 90% of the E&W slaughterhouse throughput for each livestock type.
3. Information on the weight of meat produced from a sample of animals weighed at slaughterhouses is obtained from survey respondents, around 55 slaughterhouse respondents. From the information provided average dressed carcass weights for each animal type are primarily calculated by adding up the total weight of the meat produced and dividing by the number of animals weighed. Cold dressed carcass weights are recorded.
4. The volume of meat production is estimated from the number of all livestock slaughtered and average dressed carcass weight information collected. Home killed production includes livestock imported into the United Kingdom for slaughter.
5. The data are subject to a variety of validation checks which identify inconsistencies in the data. All data are cleaned prior to publication in discussion with the survey respondents.

Revisions Policy

6. Figures in this notice are provisional and subject to revision. We will provide information about any revisions we make to previously published information in this statistics notice and the associated datasets. Revisions could occur for various reasons, including:
 - a. if we have not received survey data from respondents we make an estimate based on their previous returns. These estimates will be replaced with actual survey data when it is received.
 - b. survey respondents occasionally supply amended figures for previous periods.
 - c. if we have not received administrative data for the smaller slaughterhouses we make an estimate based on previous data received. These estimates will be replaced with actual data when it is received.
7. **This month revisions have been made to the data from October 2012 onwards.**